

# **VEVOR<sup>®</sup>**

## **TOUGH TOOLS, HALF PRICE**

Technical Support and E-Warranty Certificate [www.vevor.com/support](http://www.vevor.com/support)

# **FLAGPOLE USER MANUAL**

We continue to be committed to provide you tools with competitive price.

"Save Half", "Half Price" or any other similar expressions used by us only represents an estimate of savings you might benefit from buying certain tools with us compared to the major top brands and does not necessarily mean to cover all categories of tools offered by us. You are kindly reminded to verify carefully when you are placing an order with us if you are actually saving half in comparison with the top major brands.



# VEVOR®

TOUGH TOOLS, HALF PRICE

## FLAGPOLE

MODEL:

FLB-3.4-2 FLB-4.5-1 FLB-4.5-2 FLB-4.5-2C FLB-4.5-3

FLB-4.5-3B FLB-4.5-4 FLB-4.5-4B FLB-4.5-1B FLB-4.5-1C





## NEED HELP? CONTACT US!

Have product questions? Need technical support? Please feel free to contact us:

**Technical Support and E-Warranty Certificate**  
**[www.vevor.com/support](http://www.vevor.com/support)**

This is the original instruction, please read all manual instructions carefully before operating. VEVOR reserves a clear interpretation of our user manual. The appearance of the product shall be subject to the product you received. Please forgive us that we won't inform you again if there are any technology or software updates on our product.

## SAFETY INSTRUCTIONS

### **WARNING:**

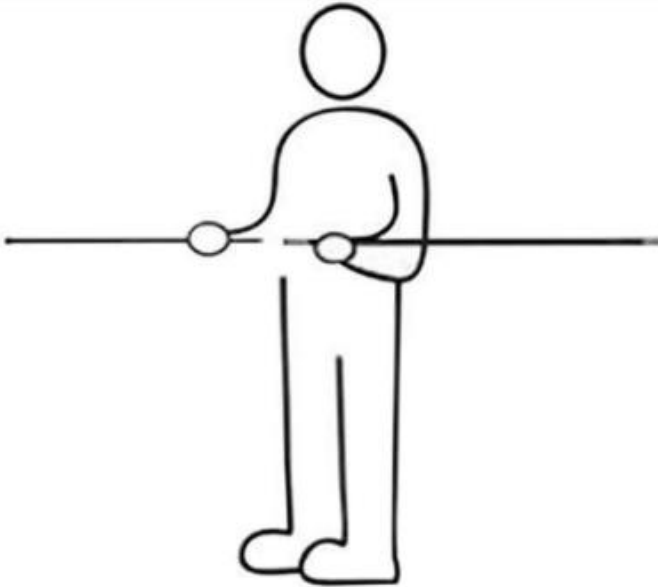
Read this instructions carefully before using this product. Failure to do so can result in serious injury.

- ◆ Warning. Only use feather flags in areas clear of power lines, structures, trees, cars, buildings, people, hazardous weather, etc.
- ◆ Ensure feather flag is only used in clear open areas to avoid damaging or creating hazardous situations.
- ◆ Warning. Do not use if winds exceed 18 mph.
- ◆ Install at least 16 feet away from road.
- ◆ Do not use feather flag if showing any sign, of damage.
- ◆ Check for damage before each use.
- ◆ Do not use aftermarket parts.
- ◆ Do not modify in any way.
- ◆ Do not use in dangerous environments.
- ◆ Use personal protective equipment such as protective eyewear and gloves when setting up. Only set up feather flag set using secured system. Examples include ground spike, anchored stand, company provided base unit, etc...
- ◆ Store feather flag indoors when not in use.

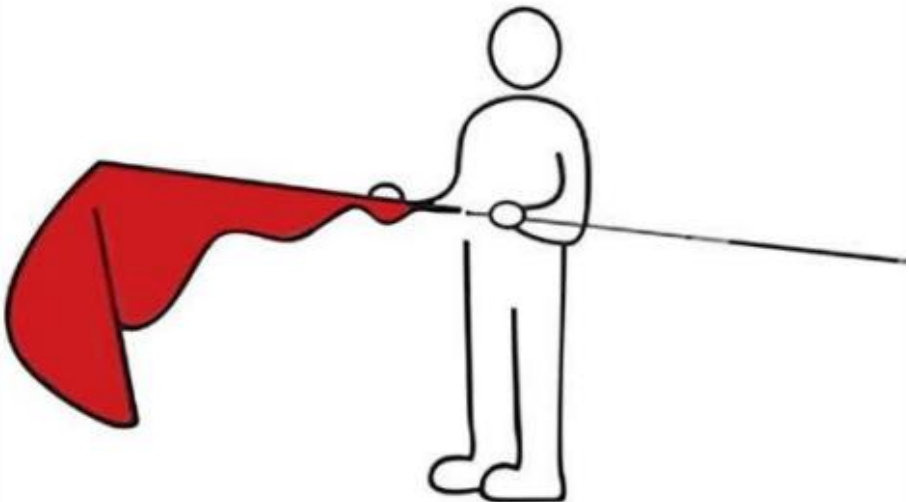
## **SAVE THESE INSTRUCTIONS**

## ASSEMBLY STEP

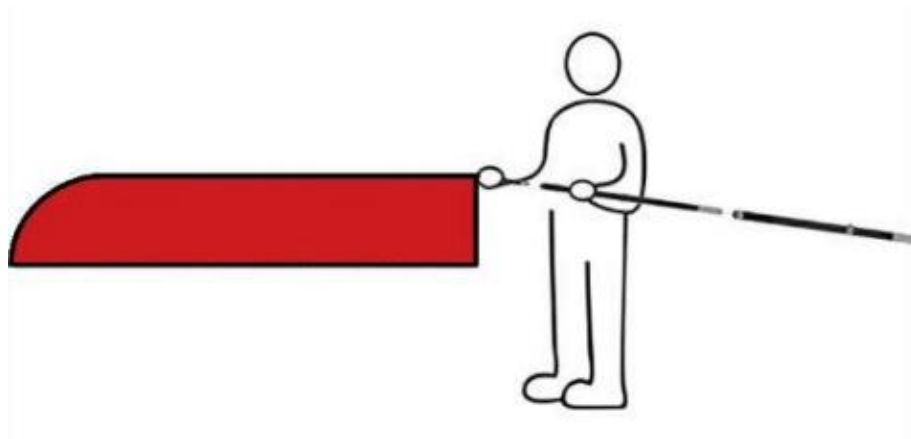
Step1: Connect the pole parts



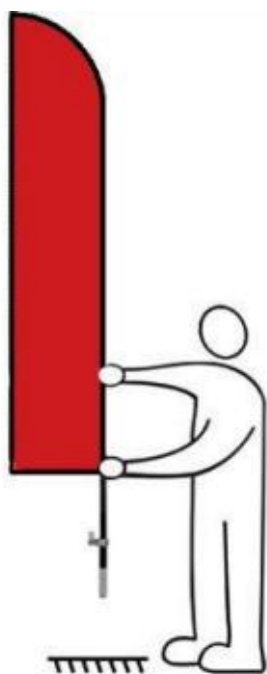
Step2: Wear the flag



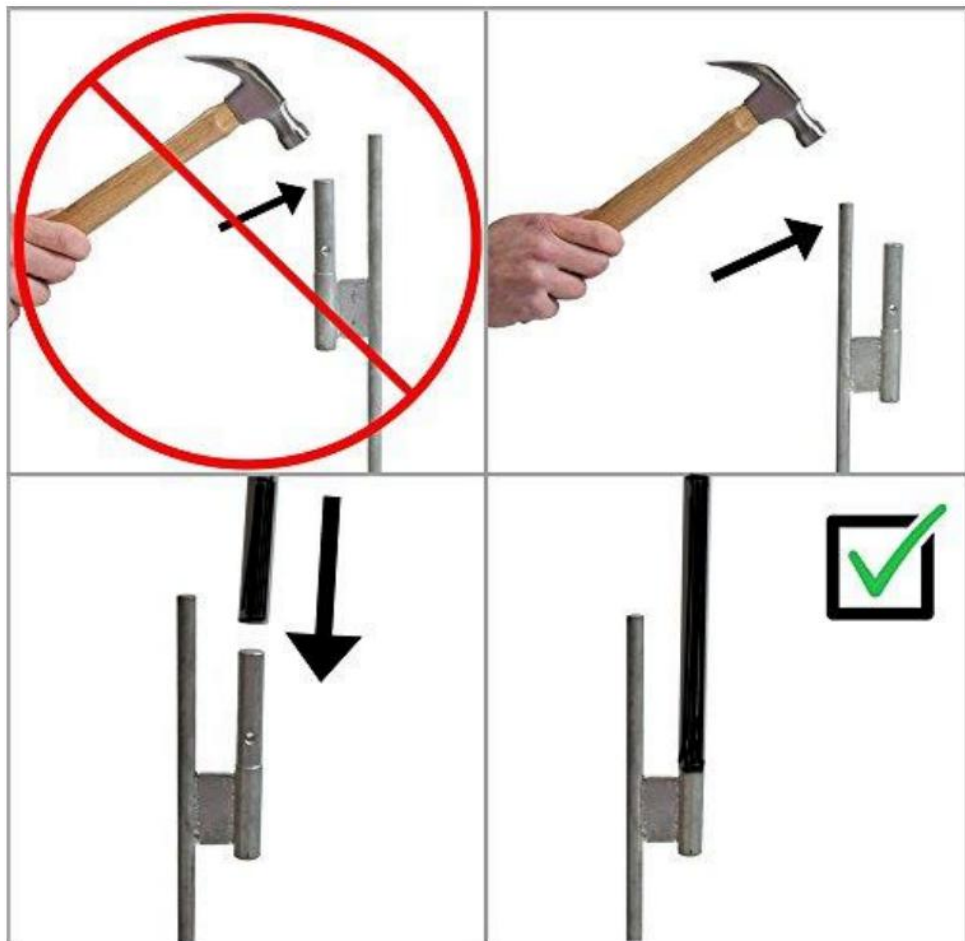
Step3: Connect the rest parts



Step4: Insert into the ground



Note: Ground spike assemble



## PRODUCT PARAMETER

Model	configuration	Qty	overall length(ft)
FLB-3.4-2	Flagpoles	2 sets	12
FLB-4.5-1	Flagpoles	1 set	13.5
FLB-4.5-2	Flagpoles	2 sets	13.5
FLB-4.5-2C	Flagpoles+Flag(OPEN)	2 sets	13.5
FLB-4.5-3	Flagpoles	3 sets	13.5
FLB-4.5-3B	Flagpoles+Flags(OPEN+Welcome+Look)	3 sets	15
FLB-4.5-4	Flagpoles	4 sets	14
FLB-4.5-4B	Flagpoles+Flags (BRAKE SERVICE+AC SERVICE+CAR WASH+REPAIR)	4 sets	15
FLB-4.5-1B	Flagpoles+Flag(OPEN)	1 set	13
FLB-4.5-1C	Flagpoles+Flag(BURGER)	1 set	15

Manufacturer: Shanghaimuxinmuyeyouxiangongsi

Address: Shuangchenglu 803nong11hao1602A-1609shi, baoshanqu, shanghai  
200000 CN.

Imported to AUS: SIHAO PTY LTD. 1 ROKEVA STREETEASTWOOD NSW 2122  
Australia

Imported to USA: Sanven Technology Ltd. Suite 250, 9166 Anaheim Place,  
Rancho Cucamonga, CA 91730

<b>EC</b>	<b>REP</b>
-----------	------------

E-CrossStu GmbH  
Mainzer Landstr.69, 60329 Frankfurt am Main.

<b>UK</b>	<b>REP</b>
-----------	------------

YH CONSULTING LIMITED.  
C/O YH Consulting Limited Office 147, Centurion  
House, London Road, Staines-upon-Thames, Surrey,  
TW18 4AX



**VEVOR**<sup>®</sup>

**TOUGH TOOLS, HALF PRICE**

**Technical Support and E-Warranty Certificate**

**[www.vevor.com/support](http://www.vevor.com/support)**

# **VEVOR<sup>®</sup>**

**TOUGH TOOLS, HALF PRICE**

Technisch Support und E-Garantie-Zertifikat [www.vevor.com/support](http://www.vevor.com/support)

## **FAHNENSTANGE**

### **Benutzerhandbuch**

We continue to be committed to provide you tools with competitive price.

"Save Half", "Half Price" or any other similar expressions used by us only represents an estimate of savings you might benefit from buying certain tools with us compared to the major top brands and does not necessarily mean to cover all categories of tools offered by us. You are kindly reminded to verify carefully when you are placing an order with us if you are actually saving half in comparison with the top major brands.



# VEVOR®

TOUGH TOOLS, HALF PRICE

## FLAGPOLE

MODELL:

FLB-3.4-2 FLB-4.5-1 FLB-4.5-2 FLB-4.5-2C FLB-4.5-3

FLB-4.5-3B FLB-4.5-4 FLB-4.5-4B FLB-4.5-1B FLB-4.5-1C





## NEED HELP? CONTACT US!

Have product questions? Need technical support? Please feel free to contact us:

**Technical Support and E-Warranty Certificate**  
**[www.vevor.com/support](http://www.vevor.com/support)**

This is the original instruction, please read all manual instructions carefully before operating. VEVOR reserves a clear interpretation of our user manual. The appearance of the product shall be subject to the product you received. Please forgive us that we won't inform you again if there are any technology or software updates on our product.

## SAFETY INSTRUCTIONS

### WARNUNG:

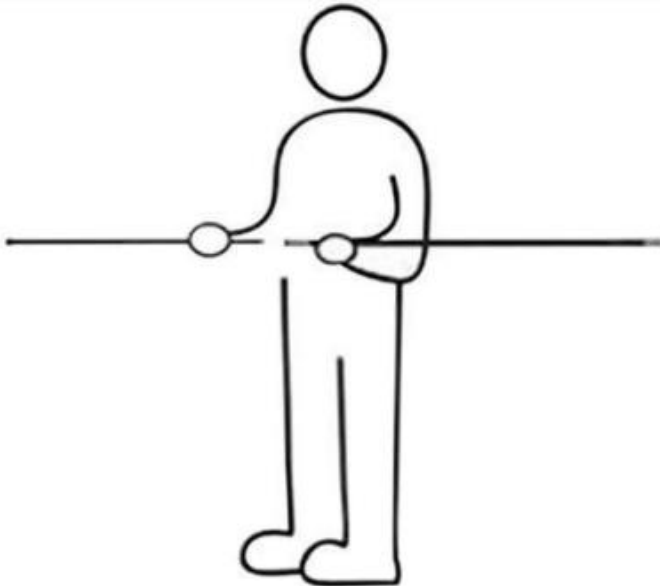
Lesen Sie diese Anweisungen vor der Verwendung dieses Produkts sorgfältig durch. Andernfalls kann es zu schweren Verletzungen kommen.

- ◆ Achtung. Verwenden Sie Federfahnen nur in Bereichen, in denen sich keine Stromleitungen, Bauwerke, Bäume, Autos, Gebäude, Menschen, gefährliches Wetter usw. befinden.
- ◆ Stellen Sie sicher, dass die Federflagge nur in freien, offenen Bereichen verwendet wird, um Schäden oder Gefahrensituationen zu vermeiden.
- ◆ Warnung. Nicht verwenden, wenn der Wind schneller als 29 km/h ist.
- ◆ Installieren Sie es mindestens 16 Fuß von der Straße entfernt.
- ◆ Benutzen Sie keine Federfahne, wenn Sie Anzeichen einer Beschädigung aufweisen.
- ◆ Vorher auf Schäden prüfen jede Verwendung.
- ◆ Verwenden Sie keine Aftermarket-Teile.
- ◆ In keiner Weise verändern.
- ◆ Nicht in gefährlichen Umgebungen verwenden.
- ◆ Benutzen Sie persönliche Schutzausrüstung wie z schützend Beim Aufbau Schutzbrille und Handschuhe tragen. Fahnenst nur mit gesichertem System aufstellen. Beispiele Dazu gehören Erdspieß, verankerter Ständer und vom Unternehmen bereitgestellter Sockel Einheit usw...
- ◆ Bewahren Sie die Federflagge im Innenbereich auf, wenn Sie sie nicht verwenden.

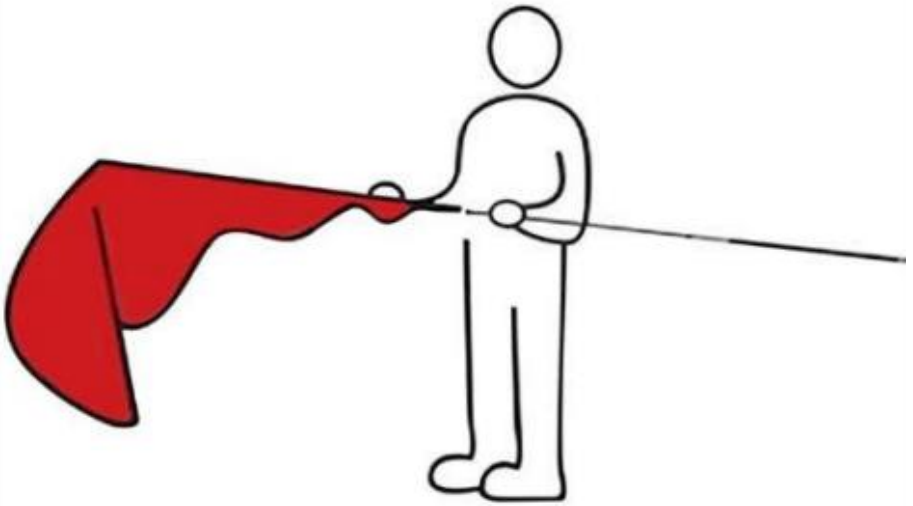
## ANLEITUNG AUFBEWAHREN

## ASSEMBLY STEP

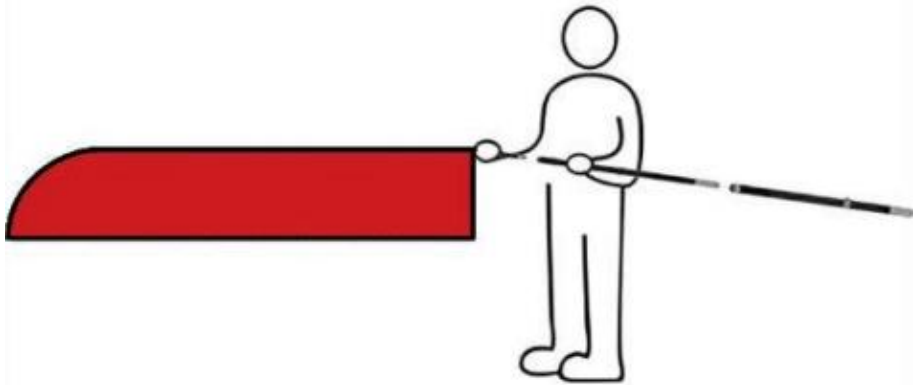
Schritt 1: Verbinden Sie die Stangenteile



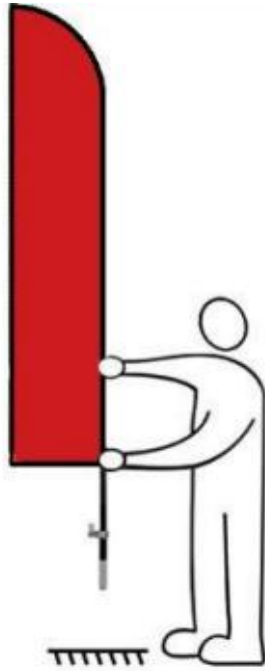
Schritt 2: Tragen Sie die Flagge



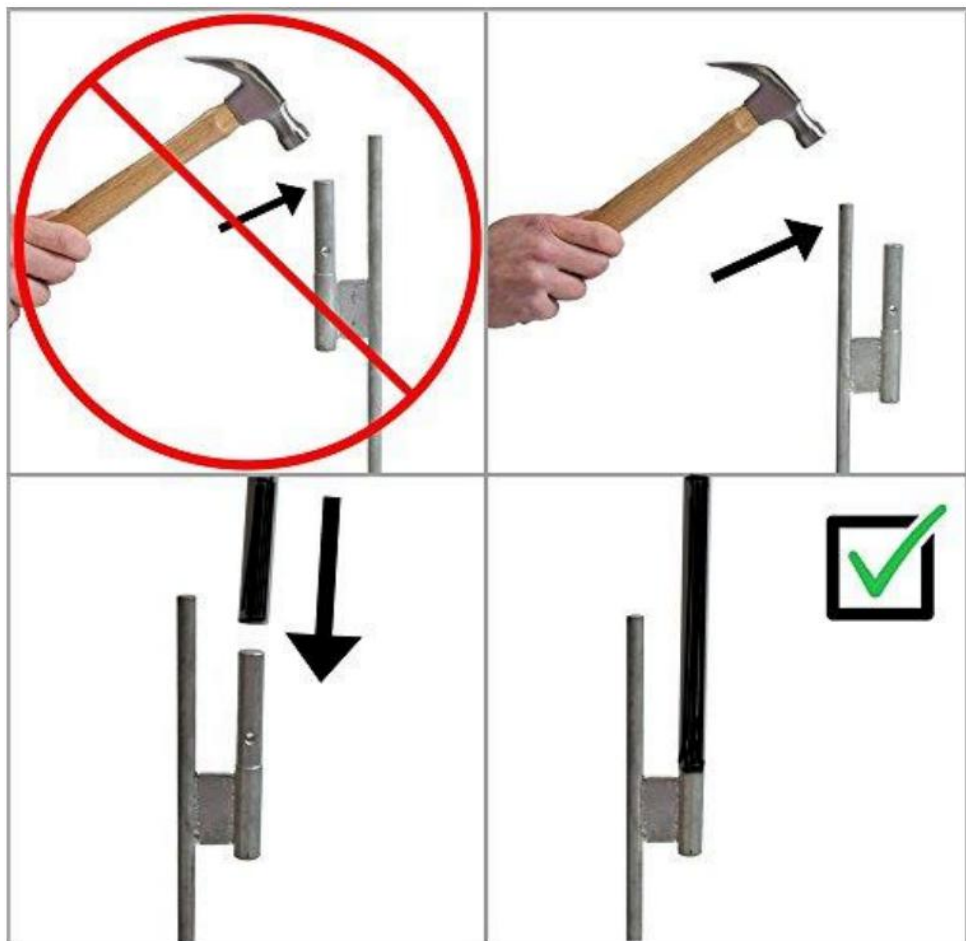
Schritt 3: Verbinden Sie die restlichen Teile



Schritt 4: In den Boden stecken



Hinweis: Erdspeiß montieren



## PRODUCT PARAMETER

Modell	Aufbau	Menge	Gesamtlänge (ft)
FLB-3.4-2	F -Lagpole	2 Sätze	12
FLB-4.5-1	Fahnenstange s	1 Satz	13.5
FLB- 4.5-2	F -Lagpole	2 Sätze	13.5
FLB- 4.5-2C	Flaggenmasten + Flagge ( OFFEN )	2 Sätze	13.5
FLB-4.5-3	F -Lagpole	3 Sätze	13.5
FLB-4.5-3 B	Fahnenmasten + Flaggen ( ÖFFNEN (Willkommen+Schwenk) )	3 Sätze	15
FLB-4.5-4	F -Lagpole	4 Sätze	14
FLB-4.5-4 B	Fahnenmasten + Flaggen ( BREMSE SERVICE + AC-SERVICE + AUTOWÄSCHE + REPARATUR )	4 Sätze	15
FLB-4.5-1B	Flaggenmasten + Flagge ( OFFEN )	1 Satz	13
FLB-4.5-1 C	Flaggenmasten + Flagge ( BURGE R )	1 Satz	15

Hersteller: Shanghaimuxinmuyeyouxiangongsi

Adresse: Shuangchenglu 803nong11hao1602A-1609shi, Baoshanqu, Shanghai  
200000 CN.

Nach AUS importiert: SIHAO PTY LTD. 1 ROKEVA STREETEASTWOOD NSW  
2122 Australien

Importiert in die USA: Sanven Technology Ltd. Suite 250, 9166 Anaheim Place,  
Rancho Cucamonga, CA 91730

<b>EC</b>	<b>REP</b>
-----------	------------

E-CrossStu GmbH  
Mainzer Landstr.69, 60329 Frankfurt am Main.

<b>UK</b>	<b>REP</b>
-----------	------------

YH CONSULTING LIMITED.  
C/O YH Consulting Limited Office 147, Centurion  
House, London Road, Staines-upon-Thames, Surrey,  
TW18 4AX



**VEVOR**<sup>®</sup>

**TOUGH TOOLS, HALF PRICE**

**Technisch Support und E-Garantie-Zertifikat**

**[www.vevor.com/support](http://www.vevor.com/support)**

# **VEVOR<sup>®</sup>**

## **TOUGH TOOLS, HALF PRICE**

Techniczny Certyfikat wsparcia i e-gwarancji [www.vevor.com/support](http://www.vevor.com/support)

# **MASZT FLAGOWY**

## **INSTRUKCJA obsługi**

We continue to be committed to provide you tools with competitive price.

"Save Half", "Half Price" or any other similar expressions used by us only represents an estimate of savings you might benefit from buying certain tools with us compared to the major top brands and does not necessarily mean to cover all categories of tools offered by us. You are kindly reminded to verify carefully when you are placing an order with us if you are actually saving half in comparison with the top major brands.



# VEVOR<sup>®</sup>

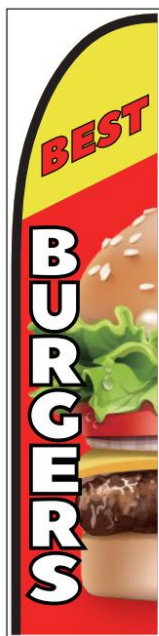
TOUGH TOOLS, HALF PRICE

## FLAGPOLE

MODEL:

FLB-3.4-2 FLB-4.5-1 FLB-4.5-2 FLB-4.5-2C FLB-4.5-3

FLB-4.5-3B FLB-4.5-4 FLB-4.5-4B FLB-4.5-1B FLB-4.5-1C





## NEED HELP? CONTACT US!

Have product questions? Need technical support? Please feel free to contact us:

**Technical Support and E-Warranty Certificate**  
**[www.vevor.com/support](http://www.vevor.com/support)**

This is the original instruction, please read all manual instructions carefully before operating. VEVOR reserves a clear interpretation of our user manual. The appearance of the product shall be subject to the product you received. Please forgive us that we won't inform you again if there are any technology or software updates on our product.

## SAFETY INSTRUCTIONS

### **OSTRZEŻENIE:**

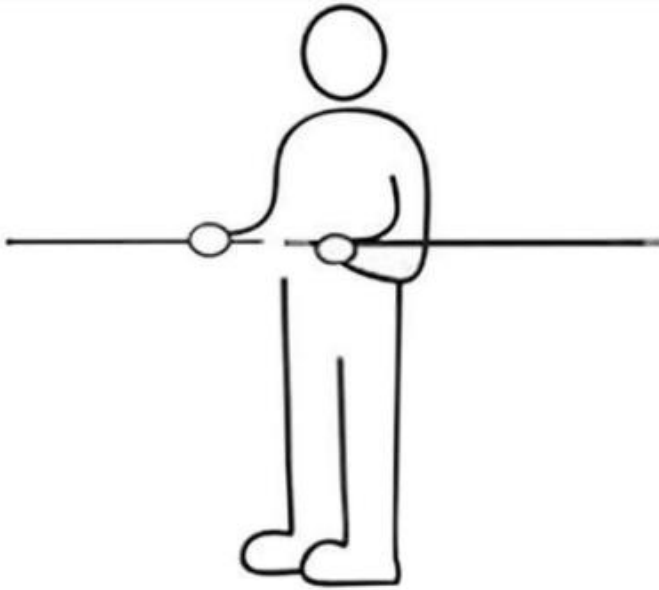
Przeczytaj uważnie niniejszą instrukcję przed użyciem tego produktu. Niezastosowanie się do tego może spowodować poważne obrażenia.

- ◆ Ostrzeżenie. Używaj flag z piórami wyłącznie w obszarach wolnych od linii energetycznych, konstrukcji, drzew, samochodów, budynków, ludzi, niebezpiecznych warunków pogodowych itp.
- ◆ Upewnij się, że flaga z piórami jest używana wyłącznie w czystych, otwartych przestrzeniach, aby uniknąć uszkodzeń lub tworzenia niebezpiecznych sytuacji.
- ◆ Ostrzeżenie. Nie używaj, jeśli prędkość wiatru przekracza 30 km/h.
- ◆ Zainstaluj co najmniej 16 stóp od drogi.
- ◆ Nie używaj flagi z piór, jeśli wykazujesz jakiegokolwiek oznaki uszkodzenia maga.
- ◆ Sprawdź wcześniej, czy nie ma uszkodzeń każde użycie.
- ◆ Nie używaj części zamiennych.
- ◆ Nie modyfikuj w żaden sposób.
- ◆ Nie używać w niebezpiecznych środowiskach.
- ◆ Stosuj środki ochrony indywidualnej, np ochronny podczas ustawiania nosić okulary i rękawice. Zestaw flag z piórami ustawiaj wyłącznie przy użyciu zabezpieczonego systemu. Przykłady obejmują kolec uziemiający, stojak zakotwiczony, podstawę dostarczoną przez firmę jednostka itp...
- ◆ Jeśli flaga z piórami nie jest używana, przechowuj ją w pomieszczeniu.

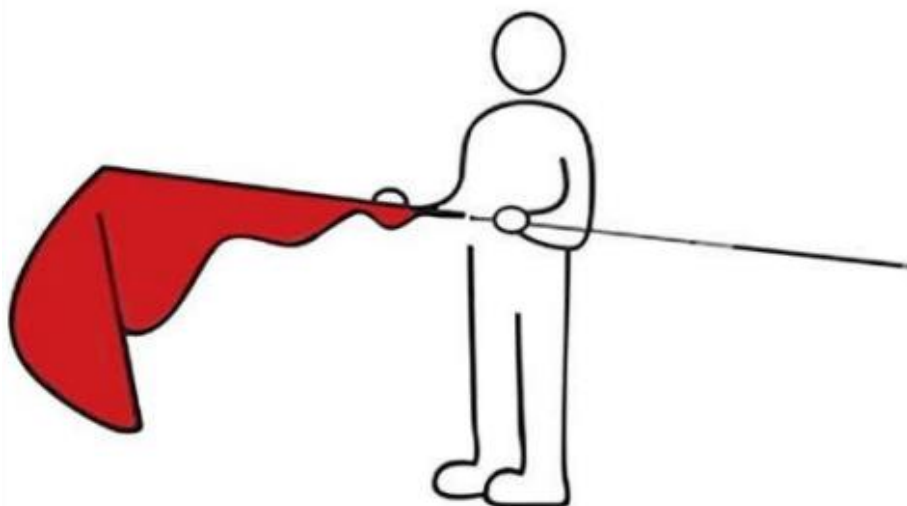
## ZACHOWAJ TE INSTRUKCJE

## ASSEMBLY STEP

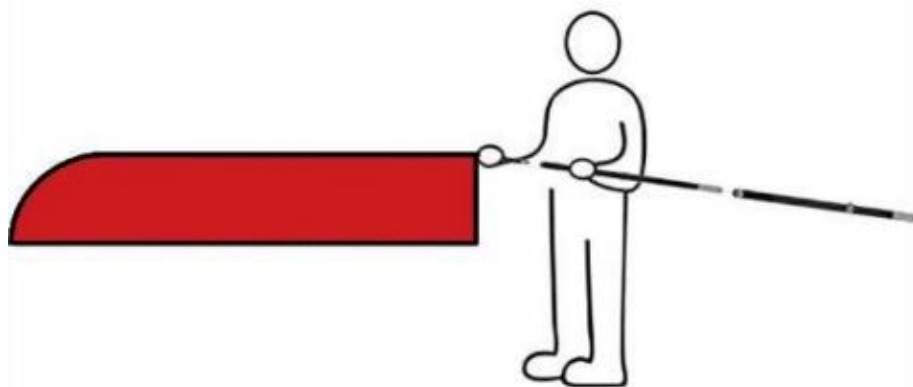
Krok 1: Połącz części biegunowe



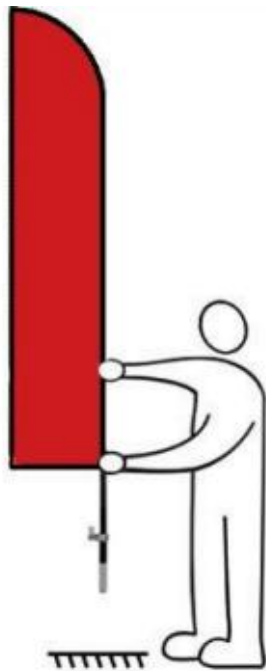
Krok 2: Noś flagę



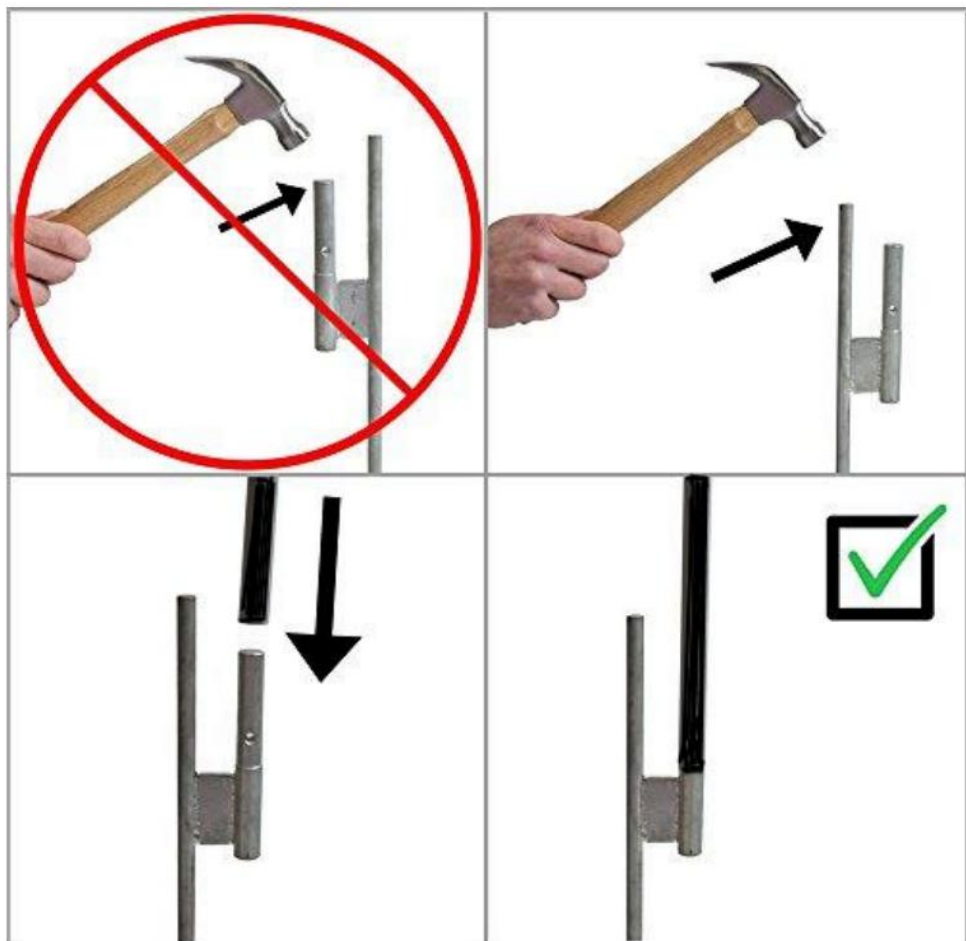
Krok 3: Połącz pozostałe części



Krok 4: Włóż do ziemi



Uwaga: Montaż kolca uziemiającego



## PRODUCT PARAMETER

Model	konfiguracja	Ilość	długość całkowita (ft)
FLB-3.4-2	Maszty flagowe	2 zestawy	12
FLB-4.5-1	Maszt flagowy s	1 zestaw	13,5
FLB- 4,5-2	Maszty flagowe	2 zestawy	13,5
FLB- 4,5-2C	Maszty flagowe + flaga ( OTWARTE )	2 zestawy	13,5
FLB-4,5-3	Maszty flagowe	3 zestawy	13,5
FLB-4.5-3 B	Maszty flagowe + flagi ( OTWARTE+Witamy+Spójrz )	3 zestawy	15
FLB-4,5-4	Maszty flagowe	4 zestawy	14
FLB-4,5-4 B	Maszty flagowe + Flagi ( HAMULEC SERWIS + SERWIS KLIMATYZACJI + MYJNIA + NAPRAWA )	4 zestawy	15
FLB-4.5-1B	Maszty flagowe + flaga ( OTWARTE )	1 zestaw	13
FLB-4,5-1 C	Maszty flagowe + flaga ( BURGE R)	1 zestaw	15

Producent: Shanghaimuxinmuyeyouxiangongsi

Adres: Shuangchenglu 803nong11hao1602A-1609shi, baoshanqu, szanghaj  
200000 CN.

Import do Australii: SIHAO PTY LTD. 1 ROKEVA STREEEASTWOOD NSW  
2122 Australia

Import do USA: Sanven Technology Ltd. Suite 250, 9166 Anaheim Place, Rancho  
Cucamonga, CA 91730



E-CrossStu GmbH  
Mainzer Landstr.69, 60329 Frankfurt am Main.



YH CONSULTING LIMITED.  
C/O YH Consulting Limited Office 147, Centurion  
House, London Road, Staines-upon-Thames, Surrey,  
TW18 4AX



**VEVOR**<sup>®</sup>

**TOUGH TOOLS, HALF PRICE**

**Techniczny Certyfikat wsparcia i e-gwarancji**

**[www.vevor.com/support](http://www.vevor.com/support)**

# **VEVOR<sup>®</sup>**

## **TOUGH TOOLS, HALF PRICE**

Tecnico Supporto e certificato di garanzia elettronica [www.vevor.com/support](http://www.vevor.com/support)

# **PENNONE**

## **MANUALE D' uso**

We continue to be committed to provide you tools with competitive price.

"Save Half", "Half Price" or any other similar expressions used by us only represents an estimate of savings you might benefit from buying certain tools with us compared to the major top brands and does not necessarily mean to cover all categories of tools offered by us. You are kindly reminded to verify carefully when you are placing an order with us if you are actually saving half in comparison with the top major brands.



# VEVOR<sup>®</sup>

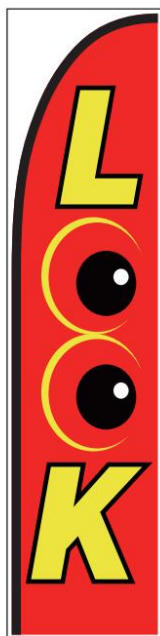
TOUGH TOOLS, HALF PRICE

## FLAGPOLE

MODELLO:

FLB-3.4-2 FLB-4.5-1 FLB-4.5-2 FLB-4.5-2C FLB-4.5-3

FLB-4.5-3B FLB-4.5-4 FLB-4.5-4B FLB-4.5-1B FLB-4.5-1C





## NEED HELP? CONTACT US!

Have product questions? Need technical support? Please feel free to contact us:

**Technical Support and E-Warranty Certificate**  
**[www.vevor.com/support](http://www.vevor.com/support)**

This is the original instruction, please read all manual instructions carefully before operating. VEVOR reserves a clear interpretation of our user manual. The appearance of the product shall be subject to the product you received. Please forgive us that we won't inform you again if there are any technology or software updates on our product.

## SAFETY INSTRUCTIONS

### AVVERTIMENTO:

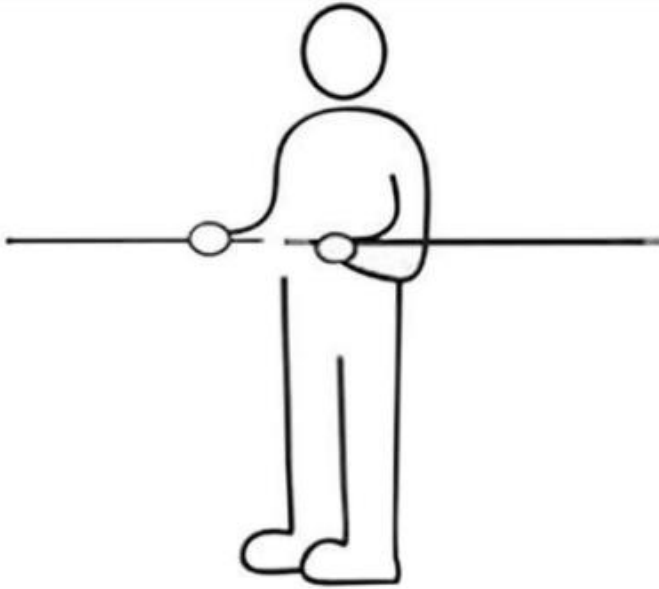
Leggere attentamente queste istruzioni prima di utilizzare questo prodotto. In caso contrario si potrebbero causare lesioni gravi.

- ◆ Avvertimento. Utilizzare le bandiere solo in aree libere da linee elettriche, strutture, alberi, automobili, edifici, persone, condizioni atmosferiche pericolose, ecc.
- ◆ Assicurarsi che la bandiera venga utilizzata solo in aree aperte e libere per evitare danni o creare situazioni pericolose.
- ◆ Avvertenza. Non utilizzare se il vento supera i 18 mph.
- ◆ Installare ad almeno 16 piedi di distanza dalla strada.
- ◆ Non utilizzare la bandiera in piuma se presenta segni di danneggiamento .
- ◆ Verificare prima eventuali danni ogni utilizzo.
- ◆ Non utilizzare parti aftermarket.
- ◆ Non modificare in alcun modo.
- ◆ Non utilizzare in ambienti pericolosi.
- ◆ Utilizzare dispositivi di protezione individuale come protettivo occhiali e guanti durante l'installazione. Installare il set con bandiera solo utilizzando un sistema protetto. Esempi includere picchetto, supporto ancorato, base fornita dall'azienda unità, ecc...
- ◆ Conservare la bandiera in piuma all'interno quando non in uso.

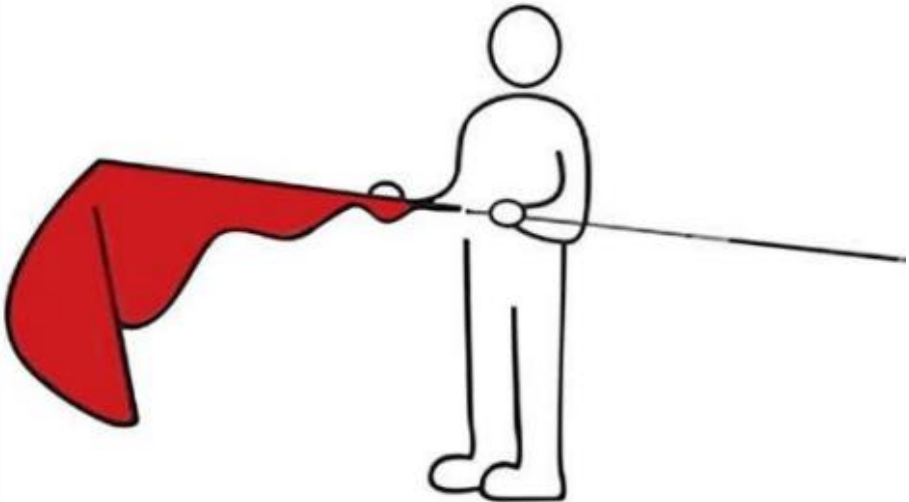
## CONSERVARE QUESTE ISTRUZIONI

## ASSEMBLY STEP

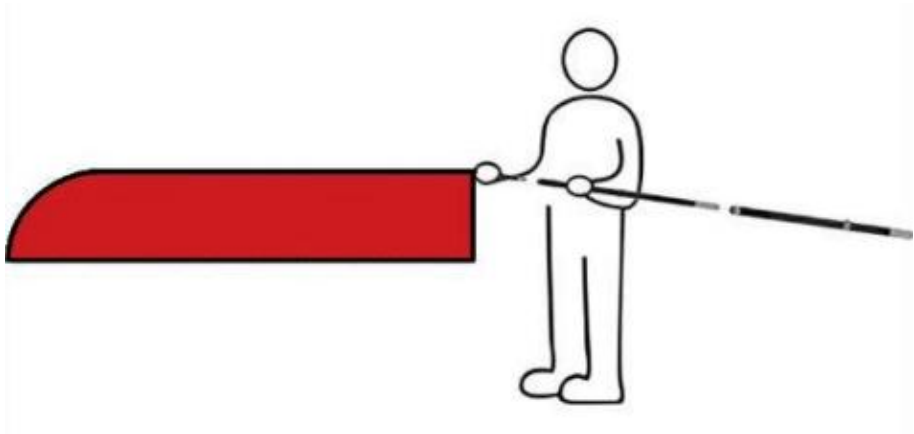
Passaggio 1: collegare le parti polari



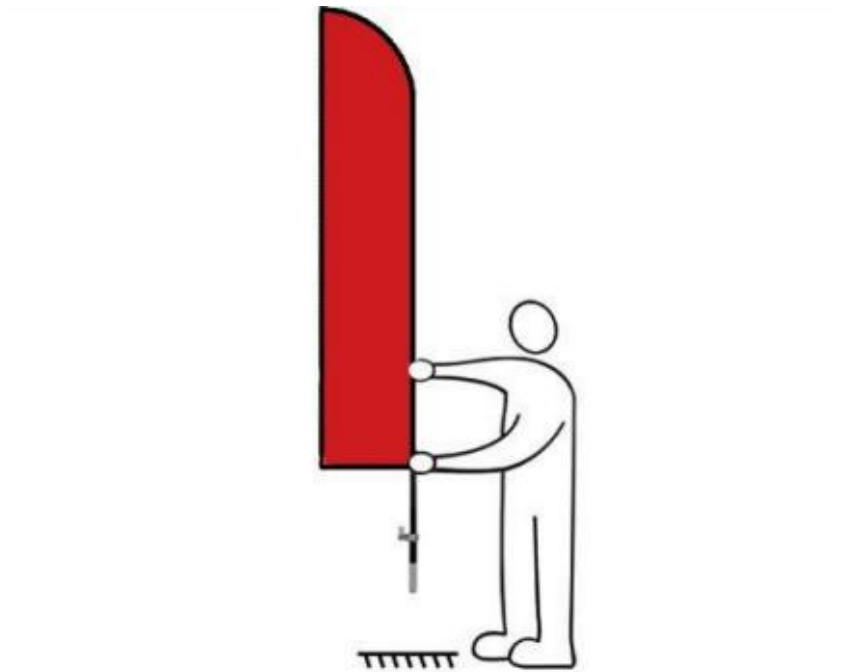
Passaggio 2: indossare la bandiera



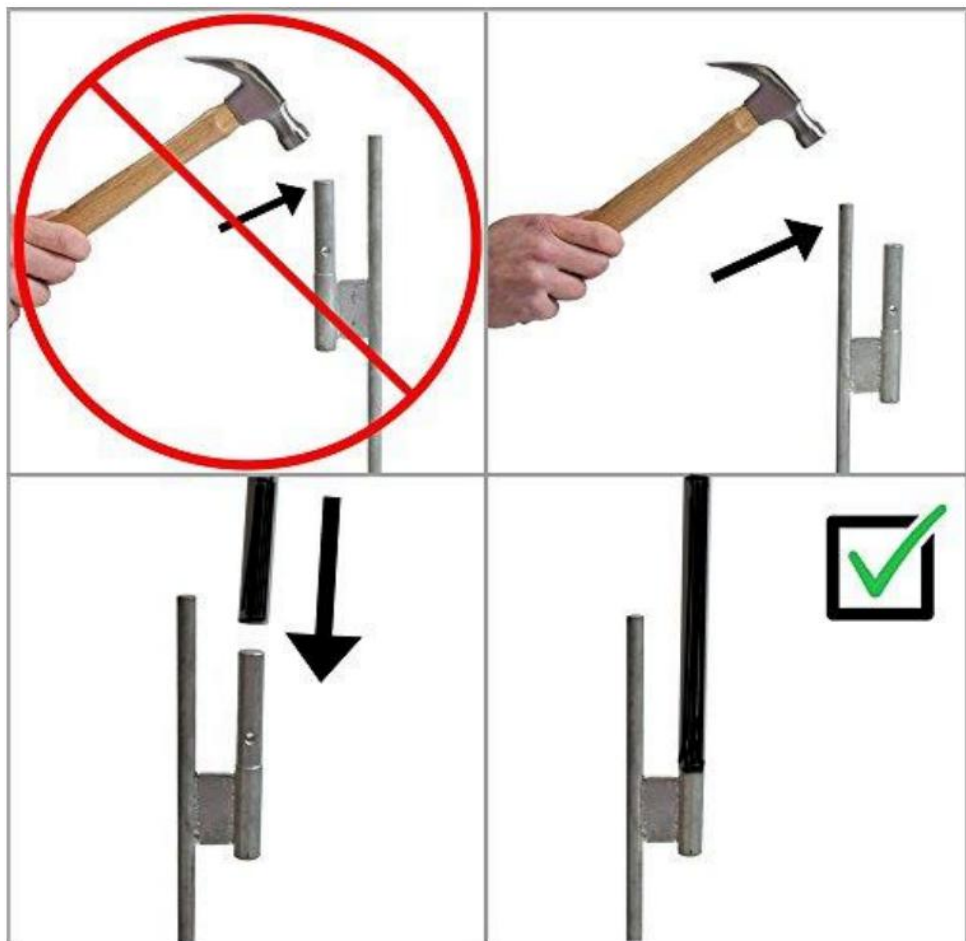
Passaggio 3: collegare le parti rimanenti



Passaggio 4: inserire nel terreno



Nota: montare il picchetto di terra



## PRODUCT PARAMETER

Modello	configurazione	Qtà	lunghezza totale (ft)
FLB-3.4-2	delle bandiere	2 set	12
FLB-4.5-1	Pennone s	1 set	13.5
FLB- 4.5-2	delle bandiere	2 set	13.5
FLB- 4.5-2C	Pennoni + Bandiera ( APERTA )	2 set	13.5
FLB-4.5-3	delle bandiere	3 set	13.5
FLB-4.5-3 B	Pennoni + Bandiere ( APERTO +Benvenuto+Guarda )	3 set	15
FLB-4.5-4	delle bandiere	4 set	14
FLB-4.5-4 B	Pennoni + Bandiere ( FRENO SERVIZIO + SERVIZIO AC + LAVAGGIO AUTO + RIPARAZIONE )	4 set	15
FLB-4.5-1B	Pennoni + Bandiera ( APERTA )	1 set	13
FLB-4.5-1 C	Pennoni portabandiera + Bandiera ( BURGE R)	1 set	15

Produttore: Shanghaimuxinmuyeyouxiangongsi

Indirizzo: Shuangchenglu 803nong11hao1602A-1609shi, baoshanqu, shanghai  
200000 CN.

Importato in Australia: SIHAO PTY LTD. 1 ROKEVA STREETEASTWOOD NSW  
2122 Australia

Importato negli Stati Uniti: Sanven Technology Ltd. Suite 250, 9166 Anaheim  
Place, Rancho Cucamonga, CA 91730



E-CrossStu GmbH  
Mainzer Landstr.69, 60329 Frankfurt am Main.



YH CONSULTING LIMITED.  
C/O YH Consulting Limited Office 147, Centurion  
House, London Road, Staines-upon-Thames, Surrey,  
TW18 4AX



**VEVOR**<sup>®</sup>

**TOUGH TOOLS, HALF PRICE**

**Tecnico Supporto e certificato di garanzia elettronica**

**[www.vevor.com/support](http://www.vevor.com/support)**

# **VEVOR<sup>®</sup>**

**TOUGH TOOLS, HALF PRICE**

Técnico Soporte y certificado de garantía electrónica [www.vevor.com/support](http://www.vevor.com/support)

## **ASTA DE BANDERA de USUARIO**

We continue to be committed to provide you tools with competitive price.

"Save Half", "Half Price" or any other similar expressions used by us only represents an estimate of savings you might benefit from buying certain tools with us compared to the major top brands and does not necessarily mean to cover all categories of tools offered by us. You are kindly reminded to verify carefully when you are placing an order with us if you are actually saving half in comparison with the top major brands.



# VEVOR®

TOUGH TOOLS, HALF PRICE

## FLAGPOLE

MODELO:

FLB-3.4-2 FLB-4.5-1 FLB-4.5-2 FLB-4.5-2C FLB-4.5-3

FLB-4.5-3B FLB-4.5-4 FLB-4.5-4B FLB-4.5-1B FLB-4.5-1C





## NEED HELP? CONTACT US!

Have product questions? Need technical support? Please feel free to contact us:

**Technical Support and E-Warranty Certificate**  
**[www.vevor.com/support](http://www.vevor.com/support)**

This is the original instruction, please read all manual instructions carefully before operating. VEVOR reserves a clear interpretation of our user manual. The appearance of the product shall be subject to the product you received. Please forgive us that we won't inform you again if there are any technology or software updates on our product.

## SAFETY INSTRUCTIONS

### ADVERTENCIA:

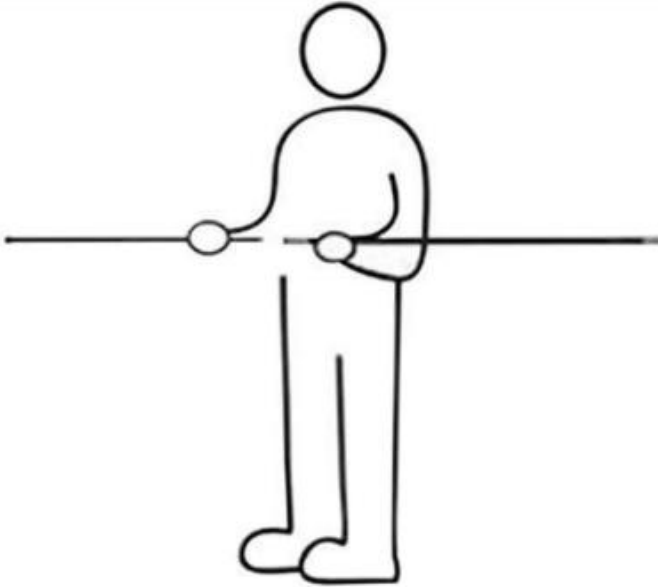
atentamente estas instrucciones antes de utilizar este producto. De lo contrario, se pueden producir lesiones graves.

- ◆ Advertencia. Utilice banderas de plumas únicamente en áreas libres de líneas eléctricas, estructuras, árboles, automóviles, edificios, personas, condiciones climáticas peligrosas, etc.
- ◆ Asegúrese de que la bandera de plumas solo se use en áreas abiertas y despejadas para evitar daños o crear situaciones peligrosas.
- ◆ Advertencia. No lo utilice si los vientos superan las 18 mph.
- ◆ Instale al menos a 16 pies de distancia de la carretera.
- ◆ No utilice banderas de plumas si muestra algún signo de daño .
- ◆ Compruebe si hay daños antes cada uso.
- ◆ No utilice piezas de repuesto.
- ◆ No modificar de ninguna manera.
- ◆ No lo utilice en entornos peligrosos.
- ◆ Utilice equipo de protección personal como protector Gafas y guantes al instalar. Instale únicamente el juego de banderas de plumas utilizando un sistema seguro. Ejemplos Incluye estaca, soporte anclado y base proporcionada por la empresa. unidad, etc...
- ◆ Guarde la bandera de plumas en el interior cuando no esté en uso.

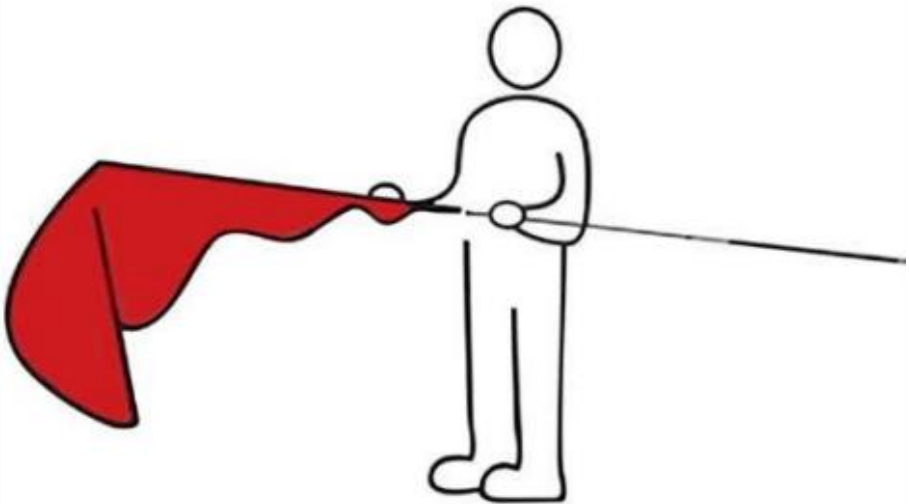
## GUARDA ESTAS INSTRUCCIONES

## ASSEMBLY STEP

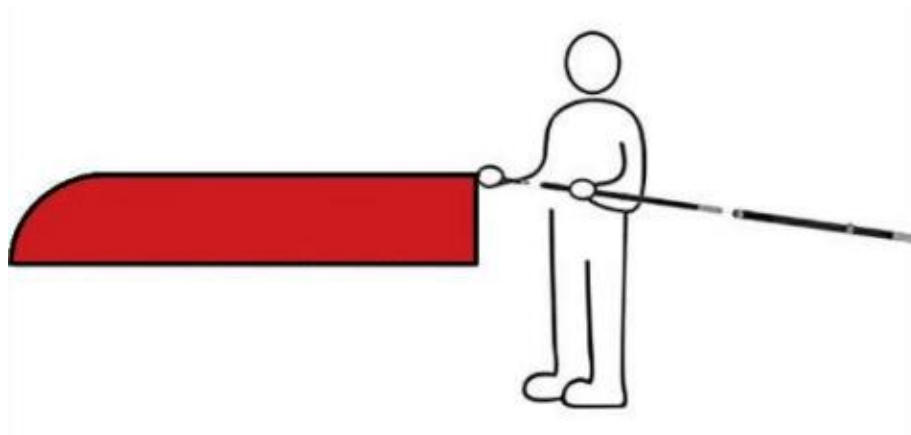
Paso 1: conecte las piezas del poste



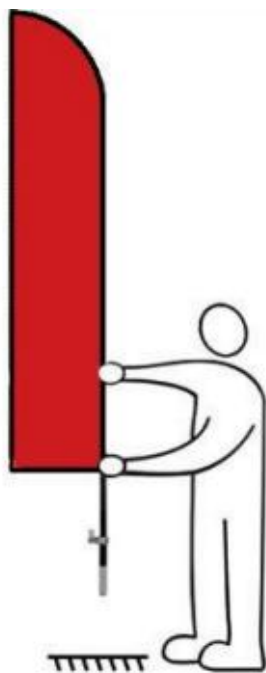
Paso 2: usa la bandera



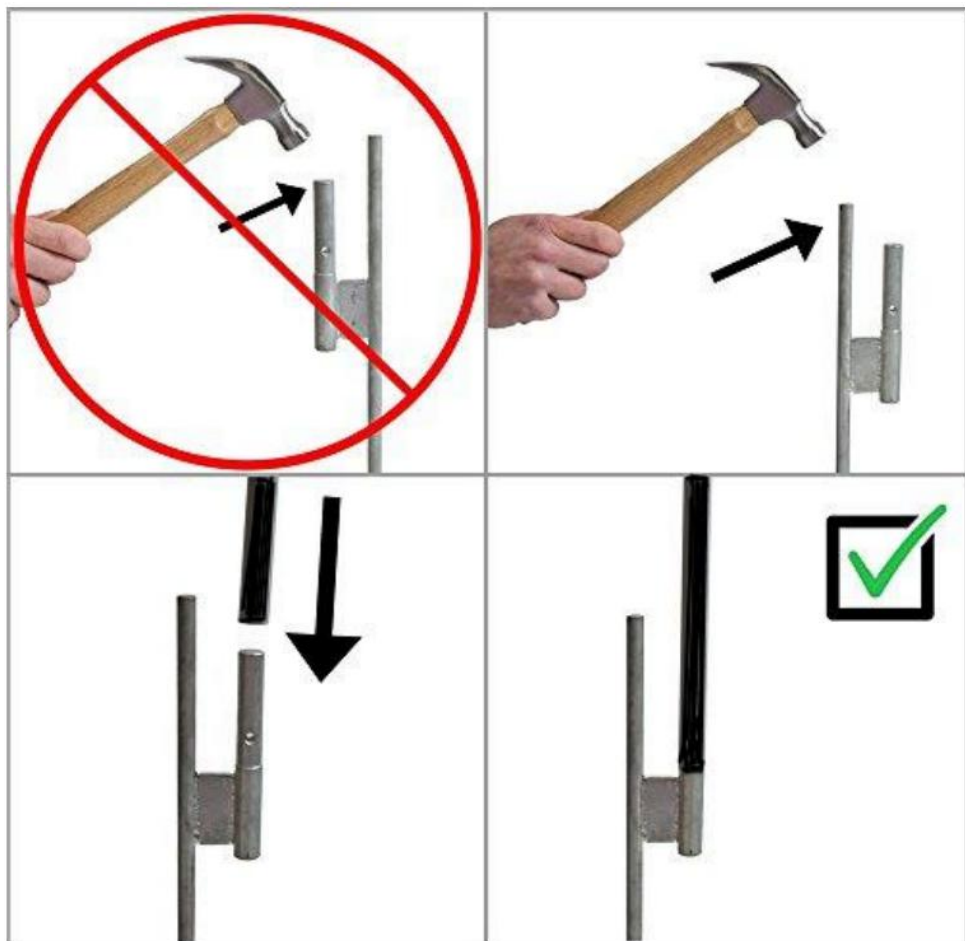
Paso 3: conecte el resto de piezas



Paso 4: Insertar en el suelo.



Nota: montaje de estaca



## PRODUCT PARAMETER

Modelo	configuración	Cantidad	longitud total (pies)
FLB-3.4-2	para banderas	2 juegos	12
FLB-4.5-1	Asta de bandera	1 juego	13.5
FLB- 4.5-2	para banderas	2 juegos	13.5
FLB- 4.5-2C	Mástiles de bandera + Bandera ( ABIERTO )	2 juegos	13.5
FLB-4.5-3	para banderas	3 juegos	13.5
FLB- 4.5-3B	Astas de banderas + Banderas ( ABIERTO+Bienvenido+Mirar )	3 juegos	15
FLB-4.5-4	para banderas	4 juegos	14
FLB- 4.5-4B	Mástiles para banderas + Banderas ( FRENO SERVICIO + SERVICIO DE AC + LAVADO DE AUTOS + REPARACIÓN )	4 juegos	15
FLB-4.5-1B	Mástiles de bandera + Bandera ( ABIERTO )	1 juego	13
FLB- 4.5-1C	Mástiles de bandera + Bandera ( BURGE R)	1 juego	15

Fabricante: Shanghaimuxinmuyeyouxiangongsi

Dirección: Shuangchenglu 803nong11hao1602A-1609shi, baoshanqu, shanghai 200000 CN.

Importado a AUS: SIHAO PTY LTD. 1 ROKEVA STREET ASTWOOD NSW 2122 Australia

Importado a EE. UU.: Sanven Technology Ltd. Suite 250, 9166 Anaheim Place, Rancho Cucamonga, CA 91730



E-CrossStu GmbH  
Mainzer Landstr.69, 60329 Frankfurt am Main.



YH CONSULTING LIMITED.  
C/O YH Consulting Limited Office 147, Centurion House, London Road, Staines-upon-Thames, Surrey, TW18 4AX



**VEVOR**<sup>®</sup>

**TOUGH TOOLS, HALF PRICE**

**Técnico Certificado de soporte y garantía electrónica**

**[www.vevor.com/support](http://www.vevor.com/support)**

# **VEVOR®**

**TOUGH TOOLS, HALF PRICE**

Teknisk Support och e-garanticertifikat [www.vevor.com/support](http://www.vevor.com/support)

## **FLAGGSTÅNG**

### **Användarmanual**

We continue to be committed to provide you tools with competitive price.

"Save Half", "Half Price" or any other similar expressions used by us only represents an estimate of savings you might benefit from buying certain tools with us compared to the major top brands and does not necessarily mean to cover all categories of tools offered by us. You are kindly reminded to verify carefully when you are placing an order with us if you are actually saving half in comparison with the top major brands.



# VEVOR®

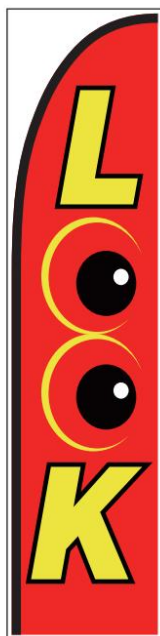
TOUGH TOOLS, HALF PRICE

## FLAGPOLE

MODELL:

FLB-3.4-2 FLB-4.5-1 FLB-4.5-2 FLB-4.5-2C FLB-4.5-3

FLB-4.5-3B FLB-4.5-4 FLB-4.5-4B FLB-4.5-1B FLB-4.5-1C





## NEED HELP? CONTACT US!

Have product questions? Need technical support? Please feel free to contact us:

**Technical Support and E-Warranty Certificate**  
**[www.vevor.com/support](http://www.vevor.com/support)**

This is the original instruction, please read all manual instructions carefully before operating. VEVOR reserves a clear interpretation of our user manual. The appearance of the product shall be subject to the product you received. Please forgive us that we won't inform you again if there are any technology or software updates on our product.

## SAFETY INSTRUCTIONS

### **VARNING:**

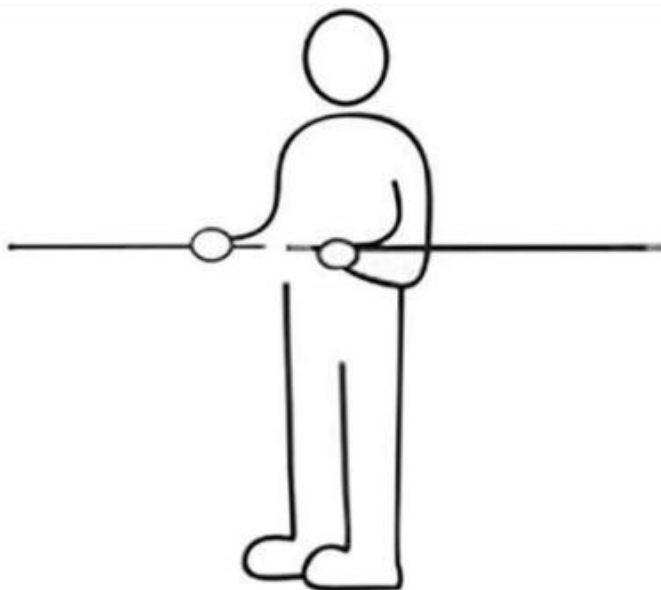
Läs dessa instruktioner noggrant innan du använder denna produkt. Underlåtenhet att göra det kan resultera i allvarliga skador.

- ◆ Varning. Använd endast fjäderflaggor i områden fria från kraftledningar, strukturer, träd, bilar, byggnader, människor, farligt väder, etc.
- ◆ Se till att fjäderflaggan endast används i tydliga öppna områden för att undvika att skada eller skapa farliga situationer.
- ◆ Varning. Använd inte om vinden överstiger 18 mph.
- ◆ Installera minst 16 fot från vägen.
- ◆ Använd inte fjäderflagga om du visar tecken på skada.
- ◆ Kontrollera före skador varje användning.
- ◆ Använd inte eftermarknadsdelar.
- ◆ Ändra inte på något sätt.
- ◆ Använd inte i farliga miljöer.
- ◆ Använd personlig skyddsutrustning som t.ex skyddande glasögon och handskar vid montering. Sätt bara upp fjäderflaggset med hjälp av ett säkrat system. Exempel inkluderar markspets, förankrat stativ, företaget tillhandahållen bas enhet osv...
- ◆ Förvara fjäderflaggan inomhus när den inte används.

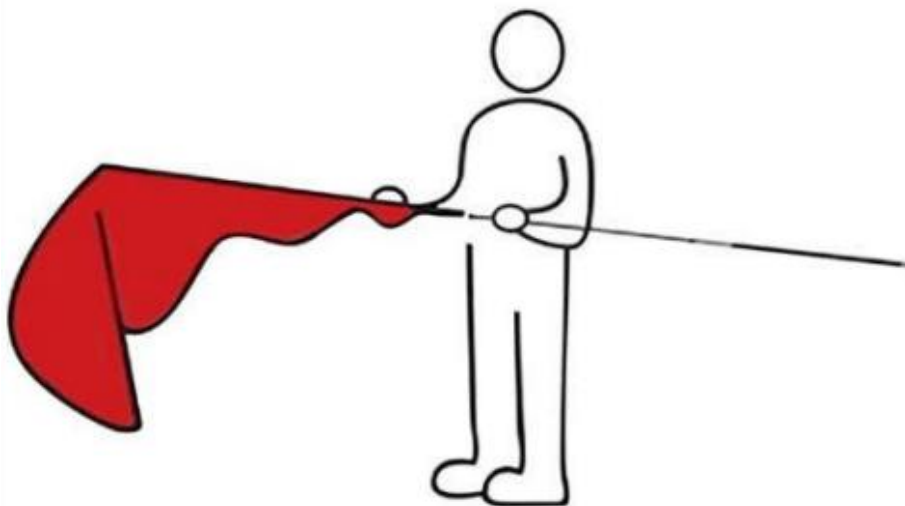
## **SPARA DESSA INSTRUKTIONER**

## ASSEMBLY STEP

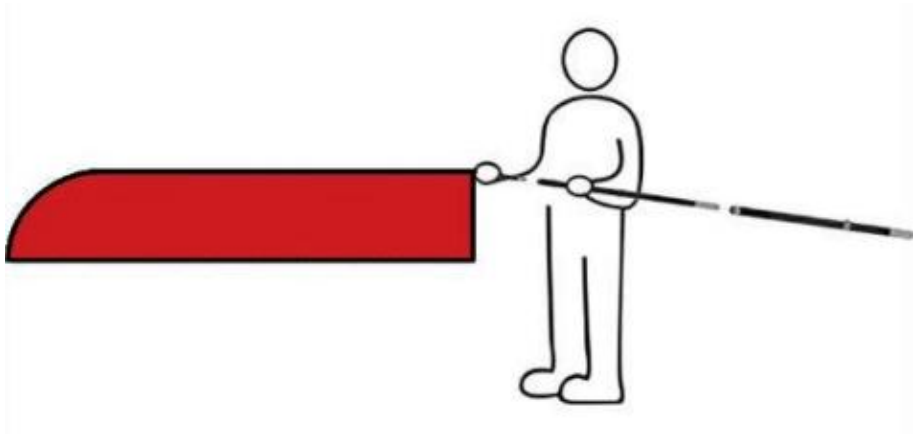
Steg 1: Anslut podelarna



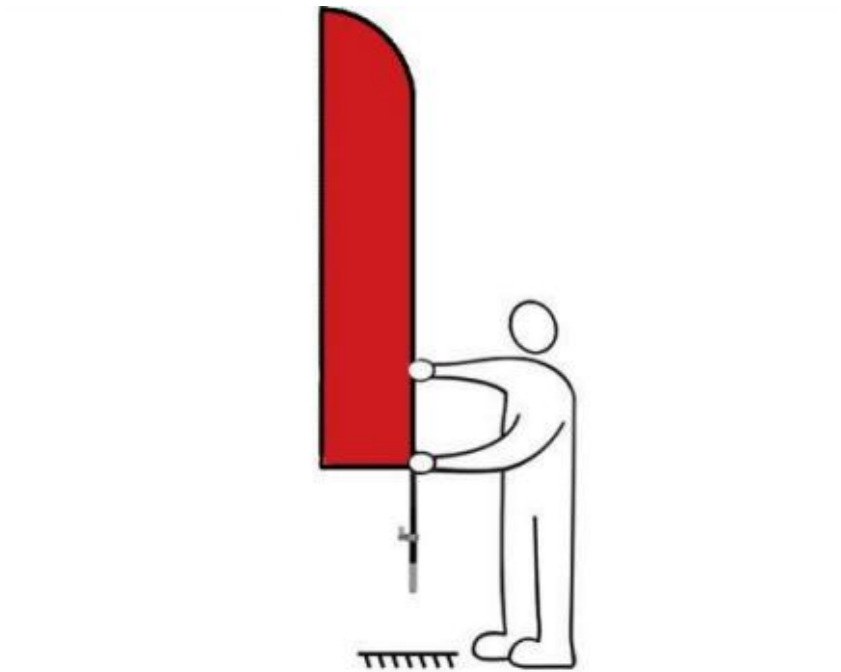
Steg 2: Bär flaggan



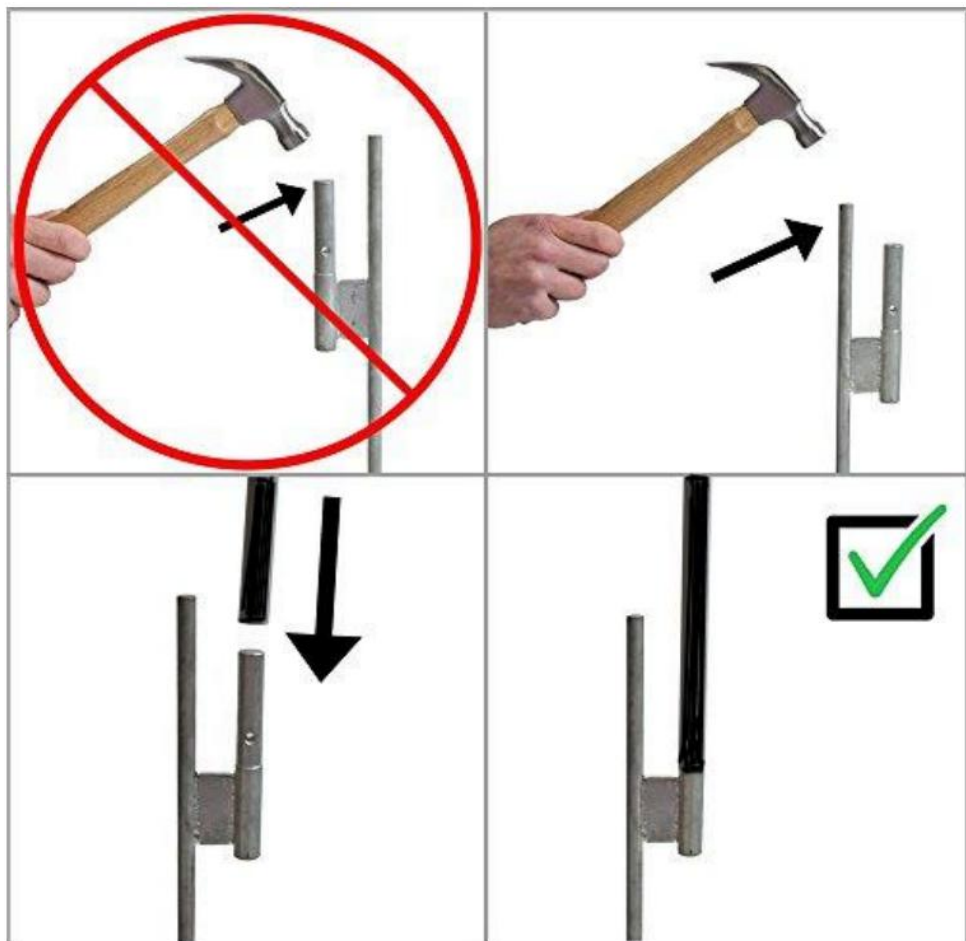
Steg 3: Anslut resten



Steg 4: Sätt in i marken



Obs: Markspetsmontering



## PRODUCT PARAMETER

Modell	konfiguration	Antal	total längd (ft)
FLB-3.4-2	F lagstänger	2 uppsättningar	12
FLB-4.5-1	F lagstängs	1 set	13.5
FLB-4.5- 2	F lagstänger	2 uppsättningar	13.5
FLB- 4,5-2C	F lagstänger + Flagga( ÖPPEN )	2 uppsättningar	13.5
FLB-4,5-3	F lagstänger	3 set	13.5
FLB-4.5-3 B	F lagstänger + flaggor ( ÖPPEN+Välkommen+Titta )	3 set	15
FLB-4.5-4	F lagstänger	4 set	14
FLB-4.5-4 B	F lagstänger + Flaggor ( BROMS SERVICE + AC SERVICE + BILTVÄTT + REPARATION )	4 set	15
FLB-4.5-1B	F lagstänger + Flagga( ÖPPEN )	1 set	13
FLB-4,5-1 C	F lagstänger + Flagga( BURGER )	1 set	15

Tillverkare: Shanghaimuxinmuyeyouxiangongsi

Adress: Shuangchenglu 803nong11hao1602A-1609shi, baoshanqu, shanghai 200000 CN.

Importerad till AUS: SIHAO PTY LTD. 1 ROKEVA STREETEASTWOOD NSW 2122 Australien

Importerad till USA: Sanven Technology Ltd. Suite 250, 9166 Anaheim Place, Rancho Cucamonga, CA 91730



E-CrossStu GmbH

Mainzer Landstr.69, 60329 Frankfurt am Main.



YH CONSULTING LIMITED.

C/O YH Consulting Limited Office 147, Centurion House, London Road, Staines-upon-Thames, Surrey, TW18 4AX



**VEVOR**<sup>®</sup>

**TOUGH TOOLS, HALF PRICE**

**Teknisk Support och e-garanticertifikat**

**[www.vevor.com/support](http://www.vevor.com/support)**

# **VEVOR<sup>®</sup>**

**TOUGH TOOLS, HALF PRICE**

Technisch Ondersteuning en e-garantiecertificaat [www.vevor.com/support](http://www.vevor.com/support)

## **VLAGGENMAST**

### **Handleiding**

We continue to be committed to provide you tools with competitive price.

"Save Half", "Half Price" or any other similar expressions used by us only represents an estimate of savings you might benefit from buying certain tools with us compared to the major top brands and does not necessarily mean to cover all categories of tools offered by us. You are kindly reminded to verify carefully when you are placing an order with us if you are actually saving half in comparison with the top major brands.



# VEVOR®

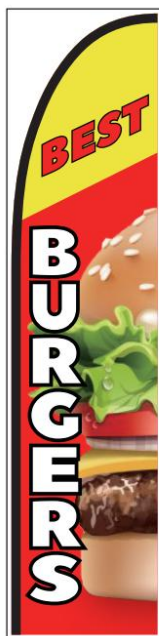
TOUGH TOOLS, HALF PRICE

## FLAGPOLE

MODEL:

FLB-3.4-2 FLB-4.5-1 FLB-4.5-2 FLB-4.5-2C FLB-4.5-3

FLB-4.5-3B FLB-4.5-4 FLB-4.5-4B FLB-4.5-1B FLB-4.5-1C





## NEED HELP? CONTACT US!

Have product questions? Need technical support? Please feel free to contact us:

**Technical Support and E-Warranty Certificate**  
**[www.vevor.com/support](http://www.vevor.com/support)**

This is the original instruction, please read all manual instructions carefully before operating. VEVOR reserves a clear interpretation of our user manual. The appearance of the product shall be subject to the product you received. Please forgive us that we won't inform you again if there are any technology or software updates on our product.

## SAFETY INSTRUCTIONS

### WAARSCHUWING:

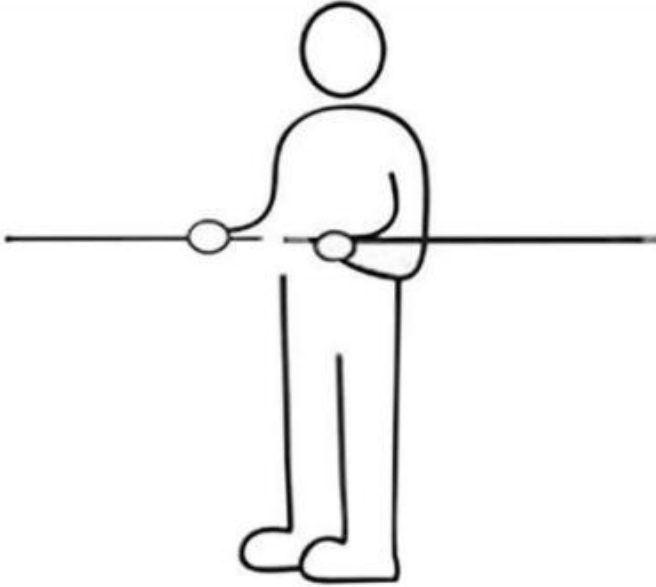
Lees deze instructies zorgvuldig door voordat u dit product gebruikt. Als u dit niet doet, kan dit leiden tot ernstig letsel.

- ◆ Waarschuwing. Gebruik verenvlaggen alleen in gebieden die vrij zijn van elektriciteitskabels, constructies, bomen, auto's, gebouwen, mensen, gevaarlijke weersomstandigheden, enz.
- ◆ Zorg ervoor dat de verenvlag alleen wordt gebruikt in open ruimtes om schade of het creëren van gevaarlijke situaties te voorkomen.
- ◆ Waarschuwing. Niet gebruiken bij windsnelheden van meer dan 30 km/u.
- ◆ Installeer op minstens 16 meter afstand van de weg.
- ◆ Gebruik geen verenvlag als u tekenen van schade vertoont.
- ◆ Controleer vooraf op schade elk gebruik.
- ◆ Gebruik geen aftermarket-onderdelen.
- ◆ Wijzig op geen enkele manier.
- ◆ Niet gebruiken in gevaarlijke omgevingen.
- ◆ Gebruik persoonlijke beschermingsmiddelen zoals beschermend Bril en handschoenen bij het opzetten. Verenvlaggenset alleen opzetten met beveiligd systeem. Voorbeelden inclusief grondpen, verankerde standaard, door het bedrijf geleverde basis eenheid enz...
- ◆ Bewaar de verenvlag binnenshuis wanneer deze niet in gebruik is.

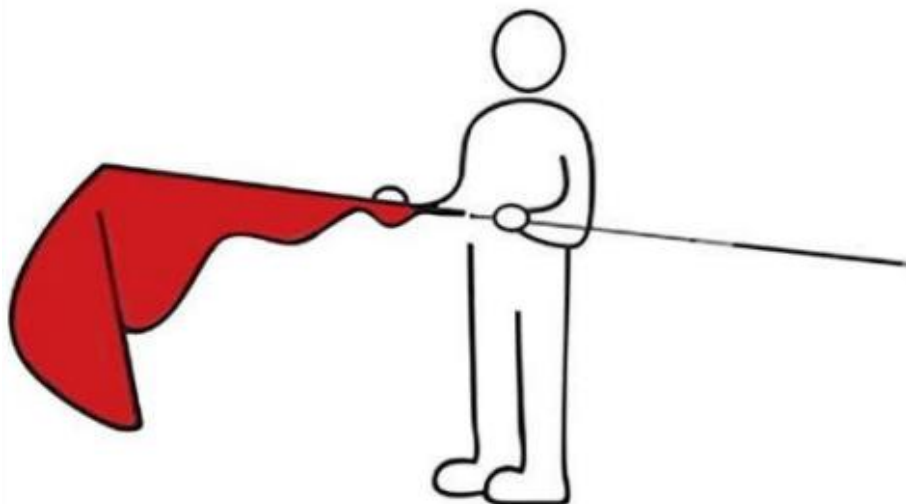
## BEWAAR DEZE INSTRUCTIES

## ASSEMBLY STEP

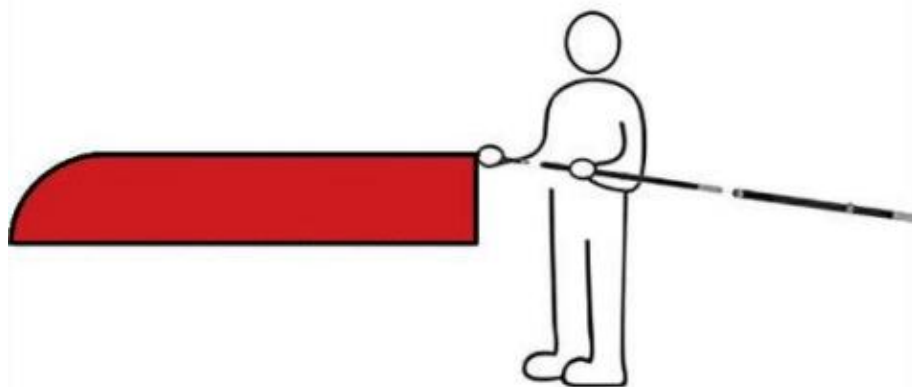
Stap 1: Sluit de pooldelen aan



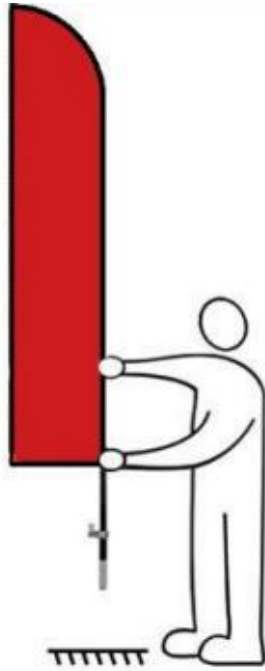
Stap 2: Draag de vlag



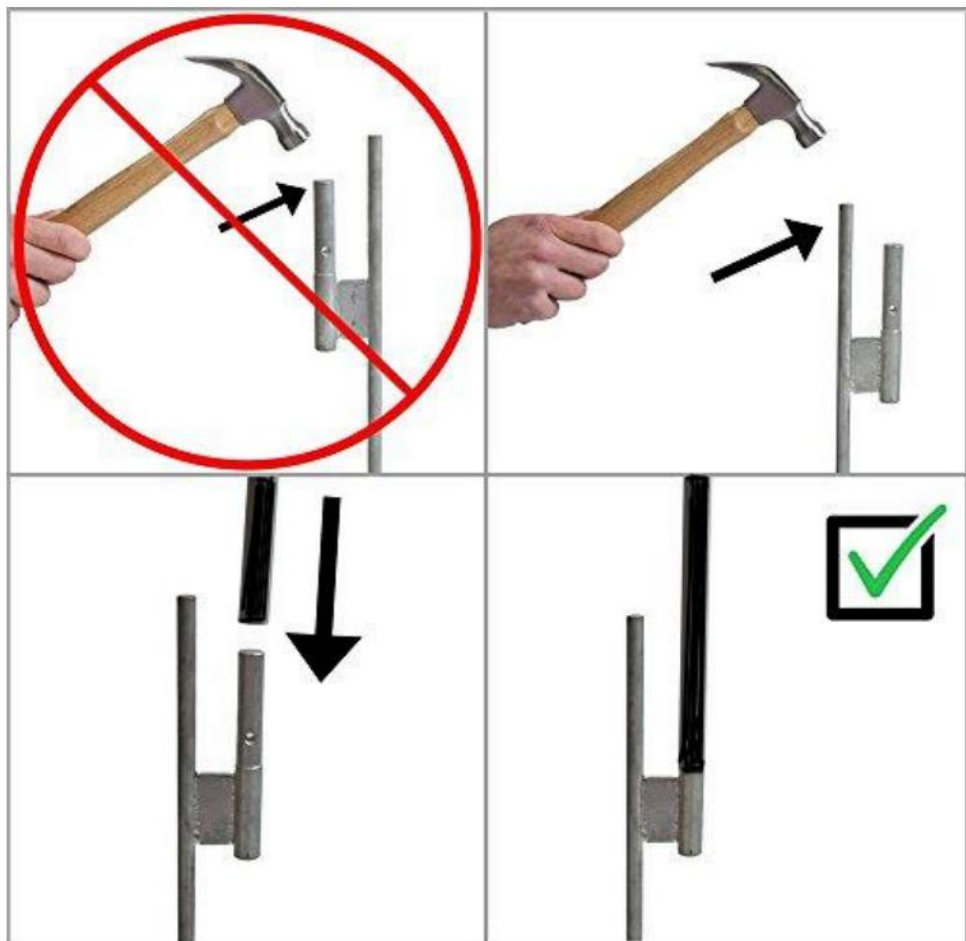
Stap 3: Sluit de overige onderdelen aan



Stap 4: Steek het in de grond



Opmerking: montage van de grondpin



## PRODUCT PARAMETER

Model	configuratie	Aantal	totale lengte (ft)
FLB-3.4-2	F lagpolen	2 sets	12
FLB-4.5-1	F lagpole s	1 set	13.5
FLB- 4,5-2	F lagpolen	2 sets	13.5
FLB- 4.5-2C	F lagmasten + Vlag( OPEN )	2 sets	13.5
FLB-4.5-3	F lagpolen	3 sets	13.5
FLB-4.5-3 B	F lagpolen + Vlaggen( OPEN+Welkom+Kijk )	3 sets	15
FLB-4.5-4	F lagpolen	4 sets	14
FLB-4.5-4 B	F lagpolen + Vlaggen ( REM SERVICE + AC SERVICE + CARWASH + REPARATIE )	4 sets	15
FLB-4.5-1B	F lagpolen + Vlag( OPEN )	1 set	13
FLB-4,5-1 C	F lagmasten + Vlag( BURGE R)	1 set	15

Fabrikant: Shanghaimuxinmuyeyouxiangongsi

Adres: Shuangchenglu 803nong11hao1602A-1609shi, baoshanqu, shanghai  
200000 CN.

Geïmporteerd naar AUS: SIHAO PTY LTD. 1 ROKEVA STREETEASTWOOD  
NSW 2122 Australië

Geïmporteerd naar de VS: Sanven Technology Ltd. Suite 250, 9166 Anaheim  
Place, Rancho Cucamonga, CA 91730



E-CrossStu GmbH  
Mainzer Landstr.69, 60329 Frankfurt am Main.



YH CONSULTING LIMITED.  
C/O YH Consulting Limited Office 147, Centurion  
House, London Road, Staines-upon-Thames, Surrey,  
TW18 4AX



**VEVOR**<sup>®</sup>

**TOUGH TOOLS, HALF PRICE**

**Technisch Ondersteuning en e-garantiecertificaat**

**[www.vevor.com/support](http://www.vevor.com/support)**

# **VEVOR<sup>®</sup>**

**TOUGH TOOLS, HALF PRICE**

Technique Assistance et certificat de garantie électronique

[www.vevor.com/support](http://www.vevor.com/support)

## **MÂT DE DRAPEAU**

### **MANUEL DE l' Utilisateur**

We continue to be committed to provide you tools with competitive price.

"Save Half", "Half Price" or any other similar expressions used by us only represents an estimate of savings you might benefit from buying certain tools with us compared to the major top brands and does not necessarily mean to cover all categories of tools offered by us. You are kindly reminded to verify carefully when you are placing an order with us if you are actually saving half in comparison with the top major brands.



# VEVOR®

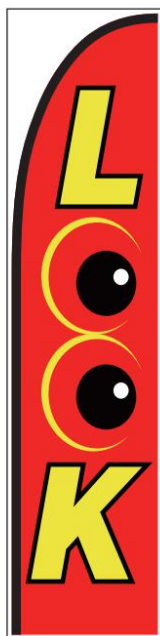
TOUGH TOOLS, HALF PRICE

## FLAGPOLE

MODÈLE:

FLB-3.4-2 FLB-4.5-1 FLB-4.5-2 FLB-4.5-2C FLB-4.5-3

FLB-4.5-3B FLB-4.5-4 FLB-4.5-4B FLB-4.5-1B FLB-4.5-1C





## NEED HELP? CONTACT US!

Have product questions? Need technical support? Please feel free to contact us:

**Technical Support and E-Warranty Certificate**  
**[www.vevor.com/support](http://www.vevor.com/support)**

This is the original instruction, please read all manual instructions carefully before operating. VEVOR reserves a clear interpretation of our user manual. The appearance of the product shall be subject to the product you received. Please forgive us that we won't inform you again if there are any technology or software updates on our product.

## SAFETY INSTRUCTIONS

### AVERTISSEMENT:

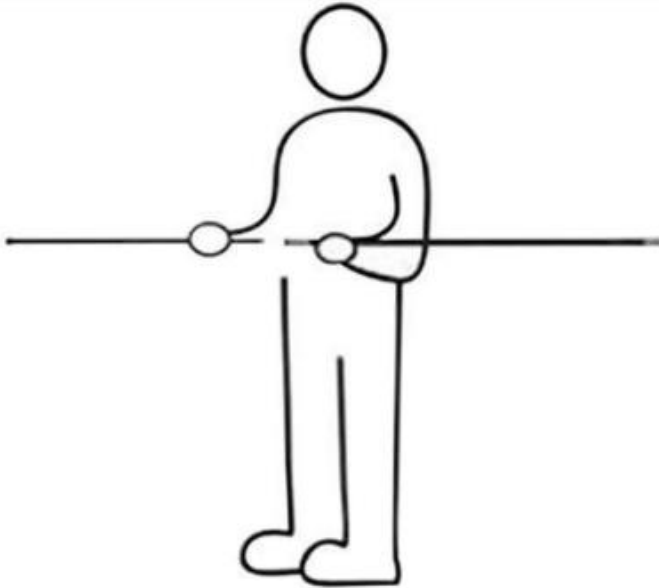
attentivement ces instructions avant d'utiliser ce produit. Ne pas le faire peut entraîner des blessures graves.

- ◆ Avertissement. N'utilisez les drapeaux à plumes que dans les zones exemptes de lignes électriques, de structures, d'arbres, de voitures, de bâtiments, de personnes, de conditions météorologiques dangereuses, etc.
- ◆ Assurez-vous que le drapeau à plumes n'est utilisé que dans des zones dégagées pour éviter d'endommager ou de créer des situations dangereuses.
- ◆ Attention. Ne pas utiliser si les vents dépassent 18 mph.
- ◆ Installez à au moins 16 pieds de la route.
- ◆ N'utilisez pas de drapeau à plumes s'il présente des signes de dommages.
- ◆ Vérifiez les dommages avant chaque utilisation.
- ◆ N'utilisez pas de pièces de rechange.
- ◆ Ne modifiez en aucune façon.
- ◆ Ne pas utiliser dans des environnements dangereux.
- ◆ Utilisez des équipements de protection individuelle tels que protecteur lunettes et gants lors de l'installation. Installez uniquement le jeu de drapeaux à plumes à l'aide d'un système sécurisé. Exemples inclure un piquet de terre, un support ancré, une base fournie par l'entreprise unité etc...
- ◆ Rangez le drapeau à plumes à l'intérieur lorsqu'il n'est pas utilisé.

## CONSERVEZ CES INSTRUCTIONS

## ASSEMBLY STEP

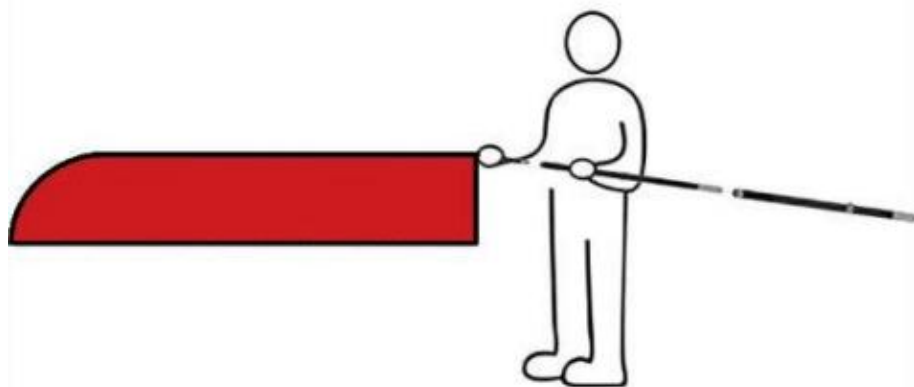
Étape 1 : connectez les pièces du poteau



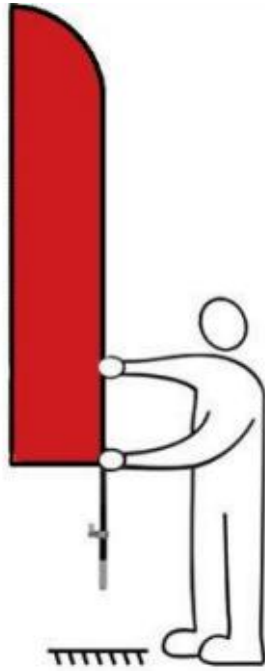
Étape 2 : Portez le drapeau



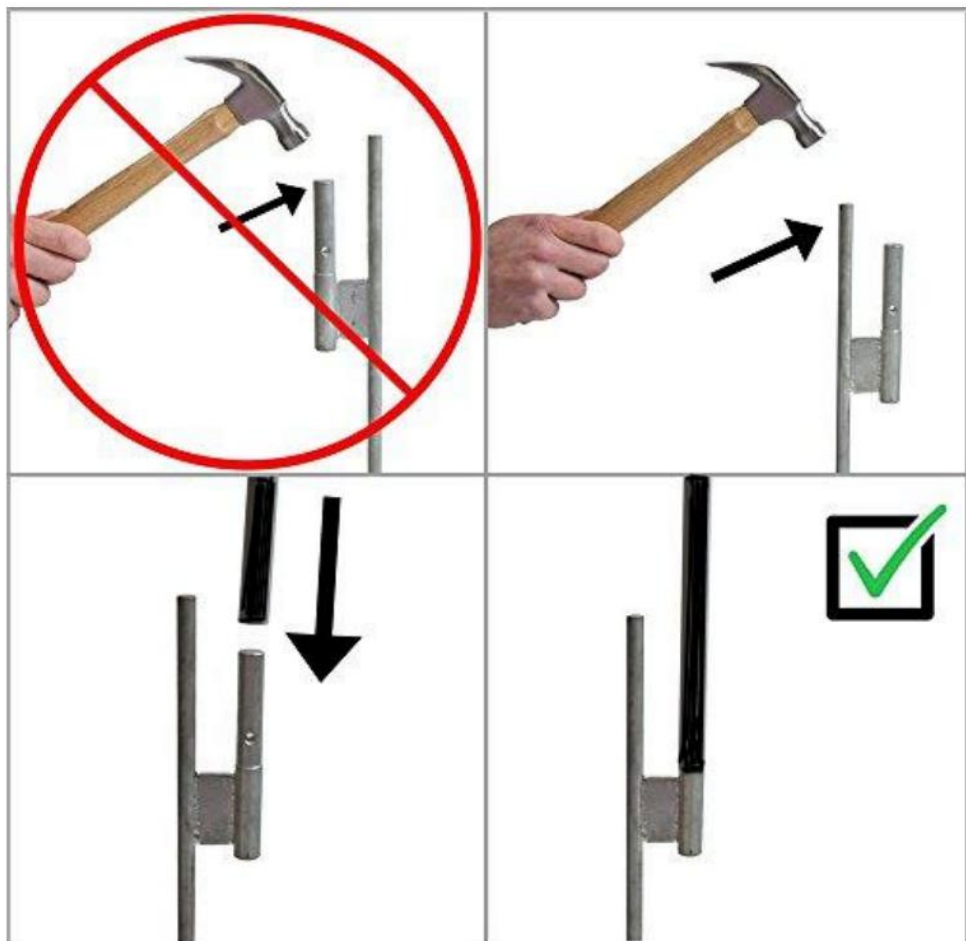
Étape 3 : connectez les autres pièces



Étape 4 : insérer dans le sol



Remarque : assemblage du piquet de terre



## PRODUCT PARAMETER

Modèle	configuration	Qté	longueur totale (pieds)
FLB-3.4-2	de drapeau	2 ensembl	12
FLB-4.5-1	Mâts de drapeau	1 jeu	13.5
FLB- 4.5-2	de drapeau	2 ensembl	13.5
FLB- 4.5-2C	Mâts de drapeau + drapeau ( OUVERT )	2 ensembl	13.5
FLB-4.5-3	de drapeau	3 ensembl	13.5
FLB- 4.5-3B	Mâts de drapeau + drapeaux ( OUVERT+Bienvenue+Regardez	3 ensembl	15
FLB-4.5-4	de drapeau	4 ensembl	14
FLB- 4.5-4B	Mâts + drapeaux ( FREIN SERVICE + SERVICE AC + LAVAGE DE VOITURE + RÉPARATION )	4 ensembl es	15
FLB-4.5-1B	Mâts de drapeau + drapeau ( OUVERT )	1 jeu	13
FLB- 4.5-1C	Mâts de drapeau + drapeau ( BURGE R)	1 jeu	15

Fabricant : Shanghaimuxinmuyeyouxiangongsi

Adresse : Shuangchenglu 803nong11hao1602A-1609shi, baoshanqu, shanghai  
200000 CN.

Importé en Australie : SIHAO PTY LTD. 1 ROKEVA STREETASTWOOD NSW  
2122 Australie

Importé aux États-Unis : Sanven Technology Ltd. Suite 250, 9166 Anaheim Place,  
Rancho Cucamonga, CA 91730

<b>EC</b>	<b>REP</b>
-----------	------------

E-CrossStu GmbH  
Mainzer Landstr.69, 60329 Frankfurt am Main.

<b>UK</b>	<b>REP</b>
-----------	------------

YH CONSULTING LIMITED.  
C/O YH Consulting Limited Office 147, Centurion  
House, London Road, Staines-upon-Thames, Surrey,  
TW18 4AX



**VEVOR**®

**TOUGH TOOLS, HALF PRICE**

**Technique Assistance et certificat de garantie électronique**

**[www.vevor.com/support](http://www.vevor.com/support)**