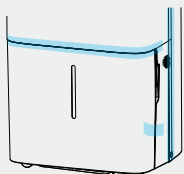


# QUICK START GUIDE

## Must Read

1



Remove the **seal tape** on the water tank before use.

2



Compressor may delay **3 minutes** at startup. It's normal for unit protection.

3

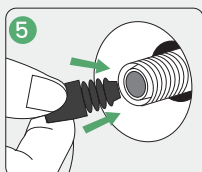
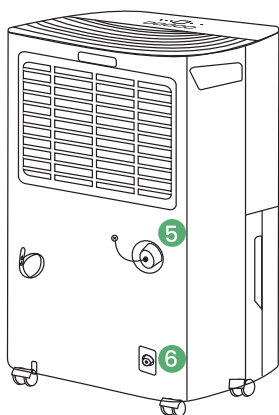


Keep all windows and doors **tightly closed** for optimal performance.

4

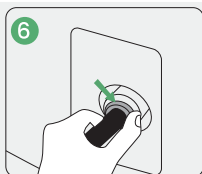


Recommended to run continuously for the **first 24 hours** of use.



Gravity Drain Port

Remember to seal the drain ports with the included caps when no drain hose is connected to prevent leakage.



Pump Drain Port  
(Applicable to CHWA150PA ONLY)

**To Disconnect the Pump Hose:**  
Do NOT pull the hose directly. Instead, press the gray release tab on the port connector, then simultaneously pull the hose out.

## Tips

- No worries if the dehumidifier is transported upside down—just place it upright and wait 24–48 hours before plugging it in.
- The flammable symbol is required by safety regulations. The dehumidifier is safe to operate under normal conditions—simply keep it away from open flames or sparks.
- When first powered on, the refrigerant needs 20–30 minutes to circulate. Water collection may be slow initially. Please allow the unit time to operate normally.



We may not be superheroes for life—but we can be your HERO for this dehumidifier. Just reach out anytime.

✉ support@waykar.com 📞 (213)-895-4871



# How to Use

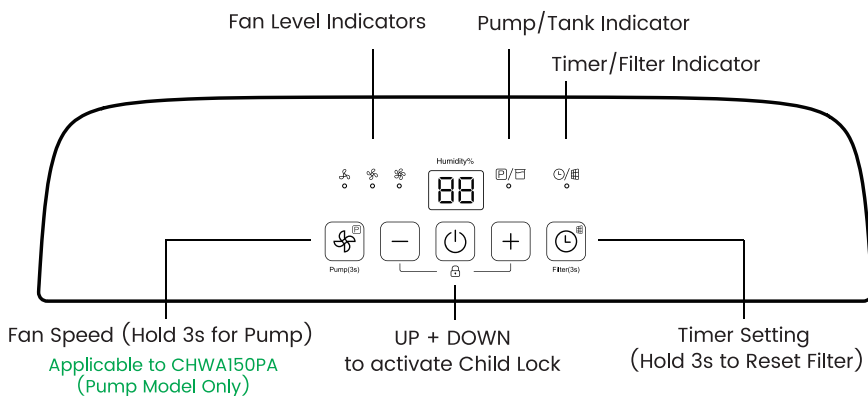
## Check List Before Plugging it In

- Has the unit been kept upright for 24 hours?
- Is there at least 18" of clearance around the unit?
- Is the water tank properly seated?
- Is the room temperature between 41°F–95°F?
- Is the drain hose securely attached? If not using a hose, is the drain cap plugged in?

If everything checks out, plug in the dehumidifier and press [⏻] to turn it on.

## Buttons & Symbols

Humidity Setting Range: Adjustable between 30% and 80% RH



Continuous Mode



Child Lock On



Full Tank Alarm  
(along with flicking tank indicator)



When the pump is activated, it will automatically drain the water out when the tank is full.  
Applicable to CHWA150PA (Pump Model Only)

## COMMON TROUBLESHOOTING

**Q: Why is the dehumidifier still running when the target humidity has been reached?**

**A:** The compressor will pause when the room humidity drops below your target humidity by more than 5% RH, accounting for the  $\pm 5\%$  RH deviation of the humidity sensor.

**Q: Can I connect a garden hose directly to the drain port?**

**A:** Yes. The drain port features a standard 1-1/16" garden hose thread (GHT), so a garden hose can be connected directly.

**Q: Why isn't the pump working and no water is coming out of the hose?  
(CHWA150PA model ONLY)**

**A:** When the pump is activated, water is first collected in the tank. The pump automatically starts draining water only when the tank is full, so it does not drain continuously.