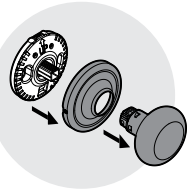
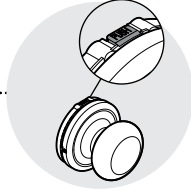
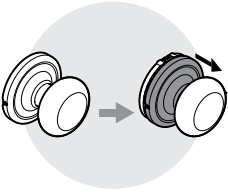




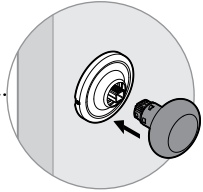
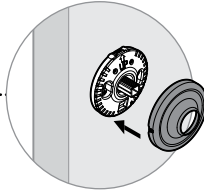
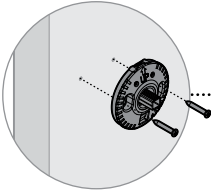
**Knob • Perilla • Bouton**

**1**

**Press release tab.**  
Presione el botón del  
lanzamiento.  
Appuyez sur le bouton  
de dégagement.

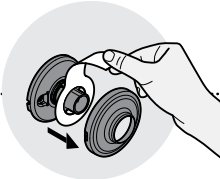
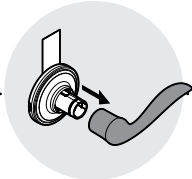
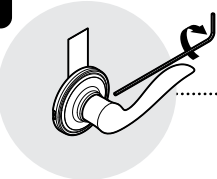


**2**



**Lever • Manja • Levier**

**1**

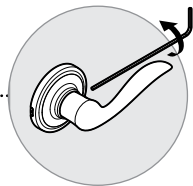
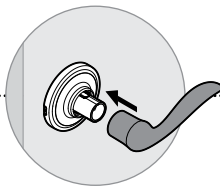
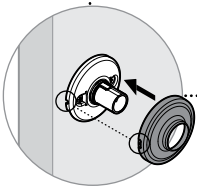
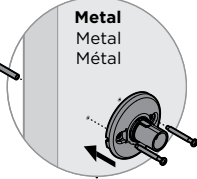
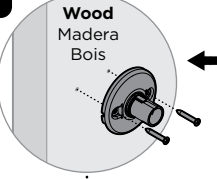


**2**

**Wood**  
Madera  
Bois

or  
ou

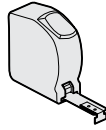
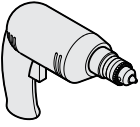
**Metal**  
Metal  
Métal



### Drilling Instructions (if required)

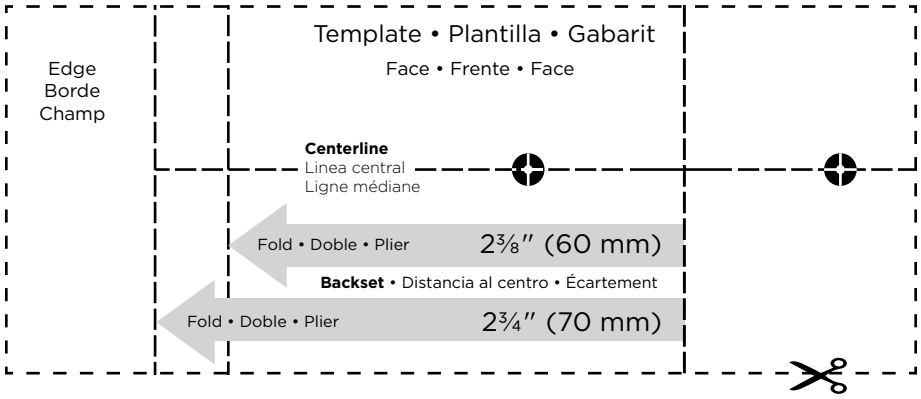
Instrucciones de Perforación (si es necesario)

Instructions de perçage (si nécessaire)

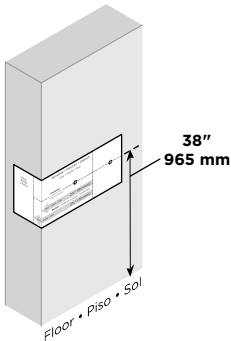


$\frac{1}{4}$ " (6 mm)

$\frac{3}{32}$ " (2 mm)



1

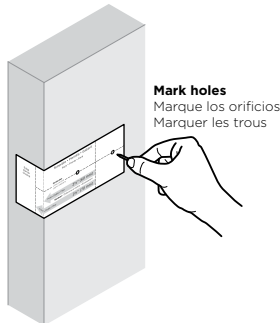


Fold template along fold line with desired backset. Place fold line along the edge of door with the centerline approximately 38" (965mm) from floor.

Doble la plantilla a lo largo del doblez con la distancia al centro deseada. Coloque el doblez a lo largo del borde de la puerta con la línea central a unas 38" (965mm) del suelo.

Plier le gabarit le long de la ligne de pliage avec écartement désirée. Placer la ligne de pliage le long du bord de la porte, avec l'axe à environ 38" (965 mm) du sol.

2



3

