

# Tuya Smart WiFi Camera

User Manual

## Download App to Add

Search for Tuya Smart in APP store or Google Play or Scan the QR Code below to download and install.

tuya<sup>®</sup>



IOS



Android

Scan QR Code to download

## Camera Power and Reset

Power on the camera, turn on the device, it will hear a power-on prompt sound, If the camera does not have a prompt sound for a long time, you can press and hold the camera Reset button until you hear the prompt "Restore factory settings, please do not power off" and release it to restore the camera to factory settings and then configure the network.

### Note:

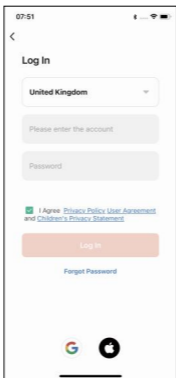
If you need local storage, please install the memory card firstly, and then power on the device (the memory card does not support hot swapping, please plug and unplug the memory card when the device is powered off). Cloud storage is recommended, which is safe and convenient.

# Register/Log

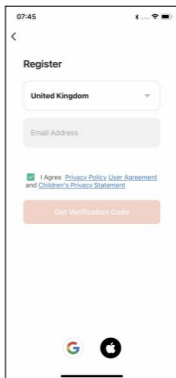
1. If you already have an account, please click "Log in" (you can also choose to log in using a third-party account).
2. If you don't have an account yet, you can register one. Click "Sign Up" read the privacy policy on the app, click "Agree" to enter the registration page, enter your email address to receive the verification code, and complete the registration.



Launch the Tuya Smart



Sign up account



Log in account

## Add Device

### Note:

This device currently only supports 2.4GHz Wi-Fi and does not support 5GHz Wi-Fi. The Wi-Fi password should not contain any special characters, such as !@#S%&\*().

Connect your phone to WiFi and turn on Bluetooth, keep your phone and device as close as possible when configuring.

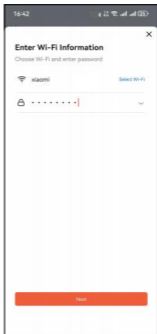


Connect to 2.4G WiFi  
and turn on Bluetooth

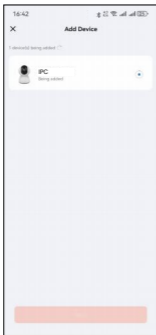
## Method 1: Bluetooth Quick Connection (Recommended)



Click on "ADD" in the pop-up window on the home page



Enter WiFi password



Awaiting Successful Device Provisioning



Setting a name for the device completes the addition

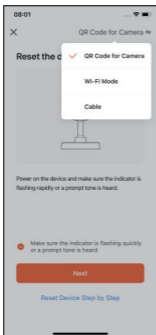
## Method 2: QR Code Connection



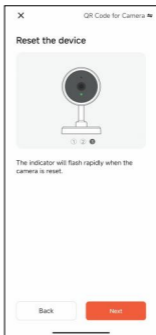
Tap "+" or "Add Device" to add device



Tap "Camera & Lock" - Smart Camera (Fi-Wi)



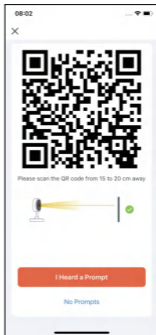
Default is QR Code mode and Tap next



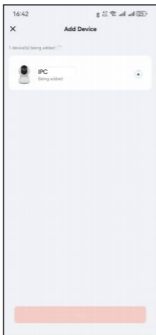
Power on and reset the device; the status LED will flash rapidly



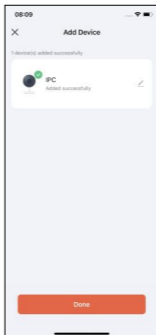
Enter WiFi password



Scan the QR code on your cell phone with the camera

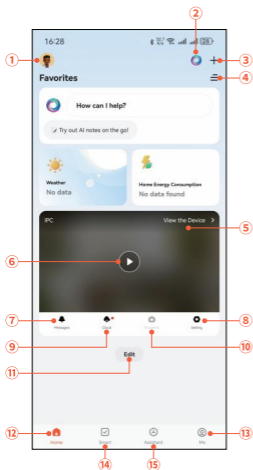


Awaiting Successful Device Provisioning



Setting a name for the device completes the addition

# APP Function



**Playback**  
Playback the recordings



**Gallery**  
Photo album



**Theme Color**  
Theme color (Light mode and dark mode)



**Private Mode**  
Private Mode (Camera display turn off on app)



**Device Volume**  
Device Volume Settings



**Motion Tracking**  
Enable Auto tracking to follow the movement



**Motion Detection**  
Motion detection alarm (Send alarm notification if any movement detected)



**Sound Detection**  
Sound Detection (Send alarm notification if any sound detected)



**Siren**  
Siren alarm (To make alarm sound to scare the suspicious person)



**Feature Editor**

Note: Functionality may differ across models. Specifications subject to actual product.

- 1.Family management
- 2.AI assistant
- 3.Add a new device
- 4.Room management
- 5.Enter the device live view page
- 6.Preview button for added devices
- 7.View device alarm messages
- 8.Configure the device
- 9.Cloud storage service (subscription required)
- 10.Capture the current live view
- 11.Editing function
- 12.Home device management
- 13.My account center
- 14.Smart (Different from home page ,this smart is to set only camera smart actions)
- 15.More service assistants
- 16.Device name
- 17.Live View Sound Switch
- 18.More device settings
- 19.Resolution switching
- 20.Live View Electronic Magnification
- 21.Monitoring live stream view
- 22.Press and hold the microphone to speak
- 23.Take a screenshot of the current live stream
- 24.Record a video of the current live stream view
- 25.Display the live stream view in full screen
- 26.Function menu collapse button
- 27.View all messages from the device detection
- 28.Function Menu
- 29.Control the PTZ rotation direction of the camera
- 30.Set preset points for area surveillance
- 31.Cloud storage service (subscription required)
- 32.Smart (Different from home page ,this smart is to set only camera smart actions)

## Google Assistant And Alexa

Please make sure your device have enable this function

### Precondition

- (1) Download and install the Google Home or Amazon Alexa APP according to the Smart speaker you have.
- (2) Register the account and pair your smart speaker with APP.

### Pairing Tuya Smart to Smart Speaker APP

Link with Google Home APP Support Google Nest Hub, Chromecast Display etc

- (1) Login on Google Home APP click the right corner of individual settings-Assistant Settings --choose Assistant --Home"Control--Search the Tuya Smart APP, the page will direct to the tuya smart login page please input your tuya smart app account and password and click Authorise" to link tuya smart app with your Google Home APP, Then you will be able to see the devices support Google Assistant in your home device list.
- (2)Control your devices through Google Home APP .For the smart camera you could say as below:  
"Ok Google ,show me the smart camera"  
"Ok Google ,show me the IPC"  
"Ok Google ,show me the security camera"  
And you could also give some familiar name to the device like front door , bedroom, haha etc.  
"Ok google show me front door /bedroom/haha"

Link with Amazon Alexa APP .Support Echo Spot , Echo Show 5/8/10 etc

(1) Login on Amazon Alexa APP and click menu on the left corner . Select skill menu to enter skill store-search Tuya smart --Click Enable button --it will direct to tuya smart login page please input your tuya smart app account and password --then speak to Echo "Alexa ,Discover the devices"--then you will able to see the devices in your tuya smart app account.

(2)Control your devices through Amazon Alexa APP .For the smart camera you could say as below:

"Alexa, show me the smart camera"

"Alexa,show me the IPC"

"Alexa, show me the security camera"

## FQA

### Q1: How do I reset my camera to factory settings ?

A1: Delete the camera from your app list directly or long press the reset button for 8s until you hear the voice "Reset ,camera reboot"

### Q2: I have select the 2.4G&5GHz WI-FI and input password correctly why does the camera still not connected to Wi-Fi?

A2: (1)Please make sure the network you used is the same one for your phone and the camera .

(2)Please make sure your Router enable DHCP you could login the router settings to check . If it's disabled the camera will not get ip and fail.

(3)Please press the reset button for 8s to restart the camera .

(4)Please make sure the Wifi signal intensity is over 80%.

### Q3: How do I change the camera from one router to another?

A3: First delete the camera from your app list or long press the reset button for 8s . Then configure the camera again.

### Q4:Why SD card can't be recognized?After a period the video and cyclevideos can not be recorded?

A4: Please check the camera settings and make sure you set up the camera to record on SD card. And currently support 4GB-128GB SD card do not exceed.

### Q5: Why i can't receive the alarm information when i see device online and has an motion detection event ?

A5: Please make sure you have enable the push notification from the Tuya Smart APP. And please enable alarm notification on app .

### Q6: How do i access the camera on WEB ?

A6:Open the page <https://ipc.ismartlife.me/login> and use your own Tuya app to scan the the QR code then you will see the camera on IE, This method can view video recordings in H.264 format. Similarly, open <https://protect.ismartlife.me/login> to view video recordings in H.265 format.



# Warning

## FCC Statement

This equipment has been tested and found to comply with the limits for a Class B digital device, pursuant to part 15 of the FCC rules. These limits are designed to provide reasonable protection against harmful interference in a residential installation. This equipment generates, uses and can radiate radio frequency energy and, if not installed and used in accordance with the instructions, may cause harmful interference to radio communications. However, there is no guarantee that interference will not occur in a particular installation. If this equipment does cause harmful interference to radio or television reception, which can be determined by turning the equipment off and on, the user is encouraged to try to correct the interference by one or more of the following measures:

- Reorient or relocate the receiving antenna.
  - Increase the separation between the equipment and receiver.
  - Connect the equipment into an outlet on a circuit different from that to which the receiver is connected.
  - Consult the dealer or an experienced radio/TV technician for help.
- To assure continued compliance, any changes or modifications not expressly approved by the party.

Responsible for compliance could void the user's authority to operate this equipment. (Example- use only shielded interface cables when connecting to computer or peripheral devices).

This equipment complies with Part 15 of the FCC Rules. Operation is subject to the following two conditions:

- (1) This device may not cause harmful interference, and
- (2) This device must accept any interference received, including interference that may cause undesired operation.

### FCC Radiation Exposure Statement:

The equipment complies with FCC Radiation exposure limits set forth for uncontrolled environment. This equipment should be installed and operated with minimum distance 20cm between the radiator and your body.