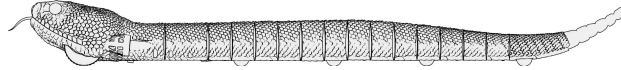


# 2.4G Remote-Controlled Amphibious Rattlesnake



## WARNING:

CHOKING HAZARD - Small parts.  
Not for children under 3 years.



It is recommended to use brand - new alkaline batteries for the remote control of this product to achieve the best operation effect.

Note: Randomly discarding this toy may have an impact on the environment. Please properly recycle it.

## Warning:

- ◆ The remote control cannot use 2 AA batteries with a voltage higher than 1.5V.
  - ◆ Only use the same or recommended batteries. Different types of batteries or a mix of new and old batteries are not allowed. Non-rechargeable batteries cannot be recharged.
  - ◆ Install the batteries according to the correct polarity, and the battery terminals must not be short-circuited.
  - ◆ When the battery power of the product and the remote control is low, the battery should be removed from the toy.
  - ◆ Only replace the batteries under adult supervision. Before replacing the batteries, make sure to dry the water thoroughly and confirm that there is no accumulated water and it is dry inside the battery compartment to avoid short-circuit.
  - ◆ Do not use this product in alkaline, acidic or polluted water.
  - ◆ Do not use this product in large or unknown - depth rivers, lakes, etc. in dangerous waters to avoid accidents. It is recommended to use it in adult - supervised waters.
- ## Maintenance and Usage Precautions:
- ◆ If the product is not used for a long time, the product and the remote - control batteries should be removed.
  - ◆ After playing with this product in water, take it out and dry it thoroughly. Do not immerse it in water for a long time, as it will cause the circuit to get wet and damage the product.
  - ◆ Before using it again, check whether the product and the remote - control power are sufficient to avoid failure to return due to insufficient power.
  - ◆ Do not use it in waters with aquatic plants, debris, or fast - flowing water, or in outdoor environments with thunderstorms, strong winds.
  - ◆ Use a clean and soft cloth to clean this product.
  - ◆ Avoid exposing this toy to sunlight and heat.
  - ◆ The operating temperature is 0 - 40°C.

The normal functions of this product may be interfered with or malfunction in a strong magnetic field or high-frequency signal environment. You can refer to the recommended reset settings in the instruction manual. If the problem still cannot be solved, please choose another playing location. Keep the instruction manual for future reference and use this product strictly in accordance with the instruction manual.

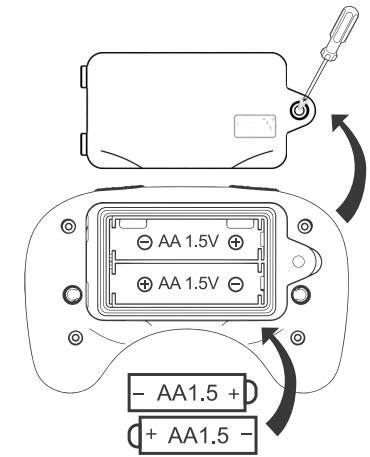
## Safety Precautions:

If the product fails to return due to factors such as insufficient power, the signal going beyond the range, or interference, do not wade into the water to retrieve it to avoid danger.

## Remote Control Battery Installation

1. Unscrew the screws on the battery cover counter-clockwise and open the battery compartment.
2. Install 2 AA batteries with a voltage of 1.5V correctly in the battery compartment according to the marked polarity (+ -).
3. If not used for a long time, please be sure to remove the batteries from the toy.

Power Supply Type: DC  
Rated Power: DC 3V 0.5W  
Battery Requirements: 2 AA batteries with a voltage of 1.5V (not included)  
Operating Temperature: 0 - 40°C



## Instructions for the Remote Control

### Power - on Frequency Matching with the Product and Power - off

- After successful frequency - matching connection, if there is no operation for 3 minutes, the remote control will automatically turn off.
- Gently press the on - off button to turn on the device. The button light will turn on, and the command light will flash as it automatically searches for the main body's signal. If the product signal is not received after 3 minutes, the device will automatically power off.
- Long - press the on - off button for 3 seconds to turn off the remote control. The button light will go out and the remote control will power off.

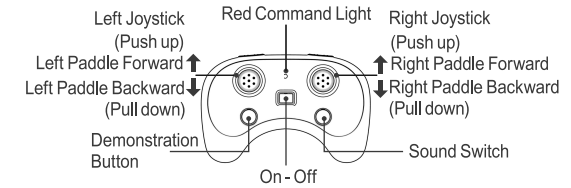
### Command Light

- When the remote control is turned on but not frequency - matched / cannot receive the main body's signal, the command light will keep flashing.
- When the signal is frequency - matched / connected successfully / with no operation, the command light will go out.
- When sending commands, the command light will flash.
- When the remote control is not turned on / the battery power is insufficient, the command light will go out.

Demonstration: Gently press the demonstration button, and the rattlesnake will automatically demonstrate movements such as moving forward, backward, and turning.

- Forward: Push both the left and right joysticks upwards simultaneously.  
Backward: Pull both the left and right joysticks downwards simultaneously.  
Left turn: Push the right joystick upwards to move forward right - handedly, and pull it downwards to move backward left - handedly.  
Right turn: Push the left joystick upwards to move forward left - handedly, and pull it downwards to move backward right - handedly.

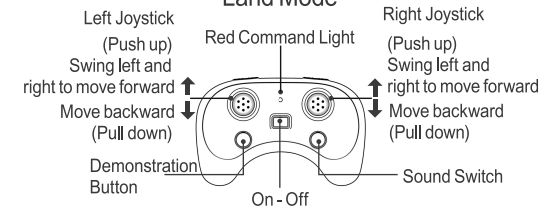
### Swimming Mode



When the two inductive contact points on the abdomen of the product come into contact with water, it will automatically switch to the swimming mode, and the indicator light will flash. When the product is turned on, it will automatically search for the signal of the remote control. When the product's indicator light stays on continuously and the command light of the remote control goes out, the frequency - matching connection is successful.

- Forward: Push both the left and right joysticks upwards simultaneously.  
Backward: Pull both the left and right joysticks downwards simultaneously.  
Left turn: Push the right joystick upwards to move forward left - handedly, and pull it downwards to move backward right - handedly.  
Right turn: Push the left joystick upwards to move forward right - handedly, and pull it downwards to move backward left - handedly.

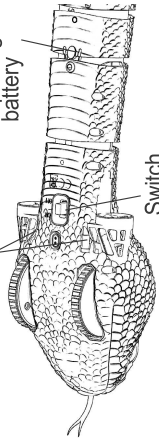
### Land Mode



- Forward: Push both the left and right joysticks upwards simultaneously.  
Backward: Pull both the left and right joysticks downwards simultaneously.  
Left turn: Push the right joystick upwards to move forward right - handedly, and pull it downwards to move backward left - handedly.  
Right turn: Push the left joystick upwards to move forward left - handedly, and pull it downwards to move backward right - handedly.

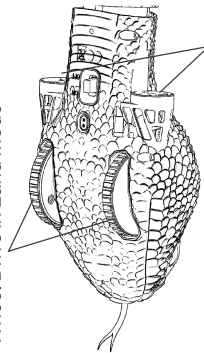
## Rattlesnake Assembly Details

Press the waist to remove when replacing the battery



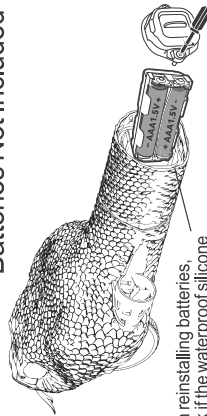
Switch

Wheel Drive in Land Mode



Propeller Drive in Swimming Mode

## Batteries Not Included

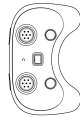


When reinstalling batteries, check if the waterproof silicone ring is flat, press it in place, and tighten the battery cover screws

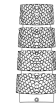


Non - rechargeable batteries  
 Four 1.5V AA (Not Included) Waterproof Sealed Batteries in the Waist of the Product  
 Power Supply Type: DC, Rated Power: DC 6V 0.5W  
 Charging Temperature: 0 - 40°C

## Packaging Information



Remote Control X1



Tail with 7-10 segments X1



Tail with 11-14 segments X1

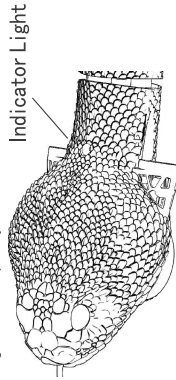


Spare Propeller Blades X1



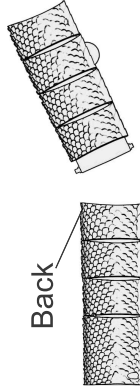
Tail X1

When frequency-matched and connected, the indicator light flashes on constantly. When not connected, the indicator light flashes slowly. When there is a low-battery alarm, the indicator light flashes quickly.



Indicator Light

Back



Abdomen

When installing, install the back part first, and then gently squeeze the abdomen part for docking.

## Problem - Solving

- When the frequency-matching connection fails, or the connection is successful but the product cannot play according to the commands, or the battery power of the product or the remote control is insufficient, please try replacing the battery of the product or the remote control.
- In the swimming mode, when the product has sluggish power or unbalanced power while fully charged, check whether there are foreign objects on the product's propeller blades or if the blades are damaged and falling off. Clean the foreign objects or replace the blades.
- When the product deviates from the expected flight path during fast straight-line movement, it may be due to factors such as the wind direction on the water surface, or the differential speed during the high-speed operation of the left and right motors, or the different resistances received by the left and right paddles. Please use the remote control joystick to make fine-tuned turns.
- When the product or the remote control cannot be turned on, turned off, or sends commands erratically, check whether the battery installation polarity is correct, or if the battery cover screws are not tightened tightly, leading to water ingress and short-circuit. Please install the batteries correctly according to the instructions or take out the batteries and let them dry.



www.ThinAirBrands.com

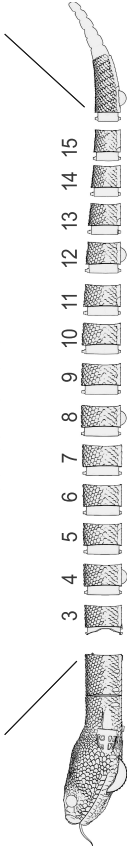
© 2026 Thin Air Brands, LLC.

Parker, Colorado 80134 USA

MADE IN CHINA

## Rattlesnake Assembly

When assembling the tail, first place the tail on the main body's cylinder until it reaches the bottom.



Then, slide the round nail below the tail along the slot below the main body into the round hole and fasten it. All tail joints are detachable.

Note: If other parts of the tail come off during play, fasten them in the above-mentioned way.

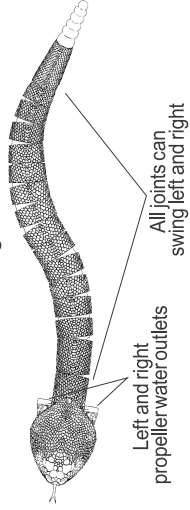
## Game Control

1. **Control Distance:** The product and the remote control are waterproof, with a 2.4GHz remote control. The effective remote-control distance is about 20-30 meters. In an environment where there is interference with signal transmission, the distance may vary. During the game, try to keep within the effective controllable distance range from the product.

2. **Game Environment:** Please choose a non-polluted, safe and reliable fresh-water area for the game. Stay away from waters with water plants or debris to avoid the propellers getting entangled in the water, which may cause the product to lose control and be unable to return.

3. **Low-Battery Indication:** When the built-in battery of the product is low, or if its power is obviously sluggish, please return as soon as possible and replace the battery in time.

Indicator Light



Left and right propeller water outlets

All joints can swing left and right

Friendly Reminder: When the product is fully charged but the water-sensing indicator light does not turn on when it encounters water, please shake or wipe the two contact points on its abdomen.

PRODUCT COLOR(S) MAY VARY FROM SHOWN ON PACKAGE. Please retain packaging for future reference as it contains important information. All materials for fastening or packing purposes are not part of the toy and should be discarded for children's safety.

FOR BEST PERFORMANCE:  
 Do not use rechargeable batteries. Do not mix battery types. Do not mix old and new batteries.

Do not mix alkaline, standard (carbon zinc) or rechargeable (nickel cadmium) batteries. Do not dispose of batteries in fire, they may leak or explode. Remove batteries from toy when not in use. Non-rechargeable batteries are not to be recharged. Batteries are to be inserted with the correct polarity. Exhausted batteries are to be removed from the toy. The supply terminals are not to be short-circuited. Only batteries of the same or equivalent type as recommended are to be used. Dispose of batteries properly; be environmentally aware; do not burn or bury old batteries. Rechargeable batteries are to be removed from the toy before being charged. Rechargeable batteries are only to be charged under adult supervision. The battery chargers are to be regularly examined for damage to the cord, plug, enclosure and other parts, and in the event of such damage, they must not be used until the damage has been repaired. Batteries are only to be charged by adults or by children at least 8 years of age. The rechargeable lithium-ion battery is not replaceable.

This device complies with Part 15 of the FCC Rules. Operation is subject to the following two conditions: (1) this device may not cause harmful interference and, (2) this device must accept any interference received, including interference that may cause undesired operation.

Note: This equipment has been tested and found to comply with the limits for a Class B digital device, pursuant to Part 15 of the FCC Rules. These limits are designed to provide reasonable protection against harmful interference in a residential installation. This equipment generates, uses and can radiate radio frequency energy and, if not installed and used in accordance with the instructions, may cause harmful interference to radio communications. However, there is no guarantee that interference will not occur in a particular installation. If this equipment does cause harmful interference to radio or television reception, which can be determined by turning the equipment off and on, the user is encouraged to try to correct the interference by one or more of the following measures:

- Reorient or relocate the receiving antenna.
  - Increase the separation between the equipment and receiver.
  - Connect the equipment into an outlet on a circuit different from that which the receiver is connected.
  - Consult the dealer or an experienced radio/TV technician for help.
- Caution: Changes or modifications not expressly approved by the party responsible for compliance could void the user's authority to operate the equipment.