

Start Here



Serenelifehome.com/register

serenelife™



SLSUPKD18PL - SLSUPKD18BL

Inflatable Stand-Up Paddle-Board

USER GUIDE

Important Warnings

- This board does NOT provide protection against drowning.
- Only use within recommended pressure levels.
- Designed for swimmers only—not a lifesaving device.
- Always supervise children in the water.

Prohibited Uses:

- Do not use in white water.
- Do not use in breaking waves.
- Do not use in offshore currents.
- Do not use in strong offshore winds.
- Not for children under 14 years old.

Usage Guidelines:

- Read instructions before use.
- Fully inflate all air chambers before use.
- One adult per board only.
- Safe distance from shore: Maximum 150 meters (492 ft).

California Prop 65 Warning

WARNING:

This product may expose you to chemicals, which is known to the state of California to cause cancer, birth defects and other reproductive harm. Do not ingest.

For more info go to: www.P65warnings.ca.gov

WARNING & SAFETY REMINDERS

Before Use:

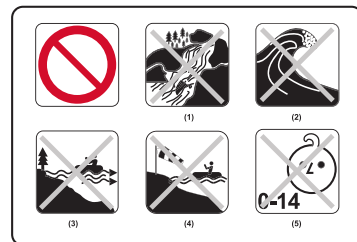
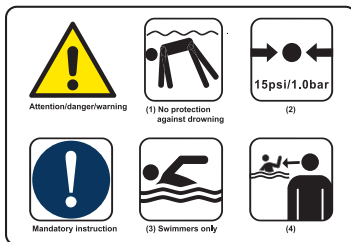
- Inspect your board and gear before heading into the water.
- Avoid paddling alone—use the buddy system.
- Carry a communication device while on the water.
- Check weather conditions and tides before riding.
- Avoid paddling when winds are blowing away from shore.

While On the Water:

- Be aware of tides and currents to estimate your travel time.
- Wear a wetsuit or dry suit when needed.
- Always wear a life jacket or flotation device.
- Take a first aid course and carry first aid equipment.

DO NOT:

- Use the board if you cannot swim.
- Go on the water if under the influence of alcohol or drugs.



Features:

- Stand-Up Paddleboard (SUP)
- Single-Person Inflatable Platform
- Water-ready with Everything Needed to Paddle
- Stable Design for Children and Teens
- Marine-Grade, Waterproof, Corrosion-Resistant Build
- Lightweight, Portable, and Convenient
- Hassle-Free Setup for Quick Water Fun
- Smooth Surface with Hi-tech Heat Welded Seam
- Easy to Inflate and Deflate
- Non-Slip EVA Deck Pad for Extra Grip
- Wide and Stable Shape for Better Balance
- Quick Fin Installation and Removal
- Ideal for Beginner to Intermediate Young Paddlers
- Suitable for Use in Lakes, Rivers, or Oceans

What's in the Box:

- SUP Paddle-Board
- Double-Action Hand Pump
- (3) Shaft Aluminum Paddle
- (1) Leash
- (2) Small Fixed Fins
- (1) Big Removable Fin
- Repair Kit
- Backpack

Technical Specifications:

- Construction Materials: Single-Layer Drop-Stitch + Single-Layer Side
- Recommended Age: 5+
- Air Pressure Inflation: 13 PSI (0.89 Bar)
- Max. Weight Capacity: 200 lbs.
- Item Weight: 11.45 lbs.
- Product Dimensions (L x W x H): 7'9" x 30" x 4" -in. (Inflated)

INTRODUCTION

THIS INSTRUCTION BOOKLET CONTAINS IMPORTANT SAFETY INFORMATION. PLEASE READ AND KEEP FOR FUTURE REFERENCE.

Inflatable stand-up paddle boards (ISUPs) are ideal for camping, boating, and those with limited storage or transport space. Made with high-quality materials and Drop-Stitch construction, they offer excellent stiffness, stability, and rigidity. This manual provides instructions for safe and proper use of the ISUP, including details on supplied equipment and operation guidelines. Users should read it carefully before use. To ensure safety, always adjust speed and direction according to sea conditions, and wear a suitable buoyancy aid. In some countries, wearing a certified life jacket is legally required.

ISUP Structure Terminology



Important Information

- Read the product instructions thoroughly before use. Store the manual for future reference.
- Inspect the product carefully after opening the package. If you discover any damage, contact the after-sales department immediately.



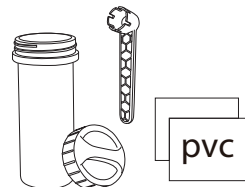
Paddle



Backpack



Hand Pump



Repair Kit



Fins

SET-UP PREPARATION

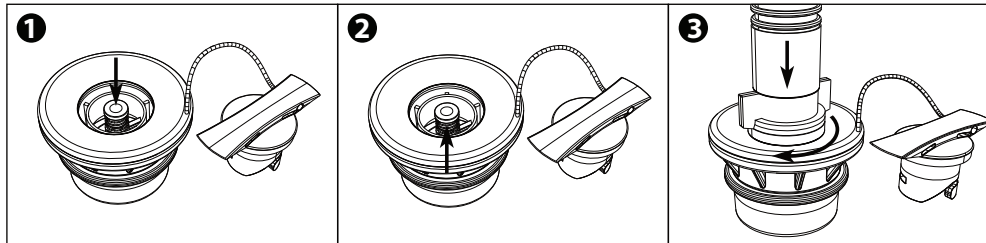
1. Unfold the Board

- Choose a smooth, clean surface to unfold the board.
- Roll out the board until it lays flat with the top side facing up.

2. Valve Operation

Follow the steps below for proper valve operation and correct inflation/deflation procedures:

- The inflation valve is located near the nose of the board.
- **For inflation:** Ensure the center valve pin is in the “UP” position. If the pin is in the “DOWN” position, press it once to return it to the “UP” position.
- **For deflation:** Press the valve pin to the “DOWN” position. You do not need to twist it.

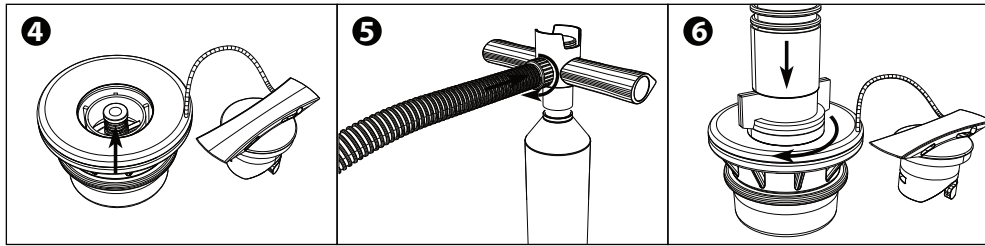


Important:

- Avoid sand or debris around the valve during deflation, as small particles may become airborne when air pressure is released.
- Always lock the valve cover over the valve stem during use to prevent accidental air release or entry of debris into the air chambers.

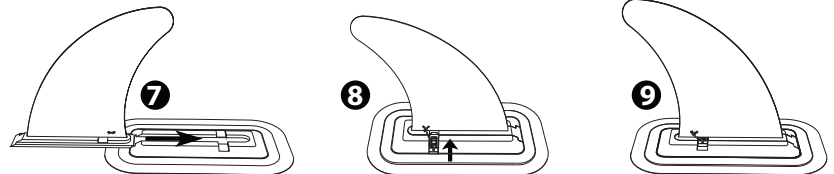
3. Board Inflation Steps

- a. Unscrew the valve cap and press down the valve pin to open the valve. Let air naturally flow into the board to save time.
Once some air has entered, press the valve pin again to return it to the "UP" position.
- b. Ensure the pump hose is connected to the "INFLATE" outlet.
- c. Connect the pump nozzle to the valve receptacle using a half-twist motion (clockwise).
- d. **Pump air into the board by sliding the pump piston up and down. Inflate until the required pressure is reached:**
 - **Minimum pressure: 8 psi**
 - **Recommended operating pressure: 15 psi**
- e. After inflation, tighten the valve cap securely. Only the valve cap ensures final airtightness.



4. Fin Installation

- The two side fins are pre-attached to the board.
- After inflation, slide the middle fin into its base and secure it by inserting the fixed pin.



5. Inflation Tips and Precautions

- **Do not use an air compressor.** Over-inflation caused by an air compressor can damage the board and is not covered under warranty.
- A slight pressure loss over 2–3 days is normal due to temperature changes. If needed, add air with the pump.
- Before long paddling trips, inflate the board for 24 hours beforehand to ensure it is airtight.
If you notice consistent air loss, refer to the “Board Repair” section for leak detection instructions.
- **Maximum pressure:** Do not exceed 15 psi. Proper pressure is achieved when the board feels firm under hand pressure.
- Avoid pumping the board to high pressure and leaving it in direct sunlight for extended periods.
In hot environments, slightly deflate the board, as heat will increase internal pressure.
- In colder water conditions, you may notice a slight pressure drop. Carry a pump with you to add air if necessary.

ALU Telescopic Kayak Paddle

Your paddle comes in three pieces. Follow these steps to assemble and adjust it:

1. Press and hold the button while sliding the paddle pieces together until they click into place.
2. Adjust the top section of the paddle to find the ideal height:
 - Start with the paddle approximately 6 inches taller than your height.
 - Adjust the top section up or down until the paddle length feels comfortable.
 - A longer paddle is better for smooth, easy paddling, while a shorter paddle is ideal for performance or competition.

Note: If the adjustable section feels loose after assembly, tighten the screw with a screwdriver to ensure a secure fit.



- **Adjustable Length:** 63" – 83" (160 – 210 cm)
- **Lightweight & Floating:** 2.1 lbs (960 g)
- **Shaft Material:** Alloy 6005-T6, with 1.14" (29 mm) and 1.06" (27 mm) diameter sections
- **Compact Design:** Disassembles into three 31" (79 cm) sections for easy storage and transport

LEAK DETECTION AND REPAIR

Air Leak Detection

If the board is losing air pressure (not due to temperature changes), check for leaks, starting with the valves. While a leaking valve is rare, if you find one, tighten it using the included wrench.

To locate a leak:

1. Mix soap and water in a spray bottle.
2. Spray the solution around the valve.
3. If you see bubbles forming, check the valve seating and base, ensuring the valve insert is tightly screwed.
4. If the issue persists, contact customer support.

If the valves are secure but the board is still losing air, there may be a small puncture. These can be repaired easily:

- Spray soap and water around the board until you see bubbles. Mark the leak location.
- If no bubbles appear, inflate the board to maximum pressure and listen carefully.
- Once you narrow down the leak, use the spray bottle again to confirm the exact spot.

Repair Kit Instructions

For Punctures Smaller Than 1/8"

1. Deflate the board and clean/dry the affected area.
2. Apply a small drop of glue over the puncture.
3. Allow it to dry for 12 hours before re-inflating.

For Larger Tears/Rips

1. Deflate the board completely and lay it flat. Allow it to dry.
2. Cut a patch at least 2 inches larger than the tear on all sides.
3. Clean the repair area with alcohol.
4. Apply three coats of adhesive to both the patch and the board, waiting 5 minutes between coats.
5. Place the patch carefully over the tear. The adhesive reacts quickly, so position it accurately.
6. Use a roller to ensure the patch is flat and even.
7. Wait 24 hours before re-inflating the board.

INSTRUCTIONS FOR CARE AND STORAGE

Follow these guidelines to maintain your board:

Before Storage:

- Rinse the board with fresh water and let it dry completely to prevent mildew.
- Use only mild soap and water for cleaning—avoid harsh chemicals.

Storage Options:

- You can store the board inflated or deflated.
- If deflated, store it in the protective bag provided.
- If storing outdoors, keep it off the ground and covered with a tarp to protect it from sun exposure.

What to Avoid:

- Hanging the board is not recommended.
- **Do not store the board in extreme temperatures:**
 - Above 150°F (66°C)
 - Below -10°F (-23°C)
- Do not roll the board too tightly when storing it deflated.

Fixing Bent Fins: Place them in boiling water and use a hairdryer to reshape them.

Register Product

Thank you for choosing SereneLife.

By registering your product, you ensure that you receive the full benefits of our exclusive warranty and personalized customer support. Complete the form to access expert support and to keep your SereneLife purchase in perfect condition.

Start Here



www.SereneLifeHome.com/pages/register

serenelife™



Questions or Comments

We are here to help!

Phone: 1.718.535.1800

[Serenelifehome.com/ContactUs](https://serenelifehome.com/ContactUs)