

**SENCOR®**

**Let's live!**



**Record Player**

**STT 312UR**

**USER'S MANUAL**

**EN**





# Contents

Safety instructions .....	2
1. Before first use.....	6
2. Description of the appliance.....	6
3. Before turning on .....	7
4. Connection .....	8
5. Operation .....	9
5.1. Automatic playback (A).....	9
5.2. Stopping during playback (B) .....	9
6. Maintenance .....	10
7. Technical specifications.....	10
8. Recording using "AUDACITY" software .....	11
8.1. Installation procedure.....	11
8.2. Software settings.....	12
8.3. Recording.....	13
8.4. Exporting recorded files.....	13

## Safety Instructions



**WARNING:** DO NOT EXPOSE THE APPLIANCE TO RAIN AND INCREASED HUMIDITY, YOU WILL THEREBY AVOID AN INCREASED RISK OF FIRE AND INJURY BY ELECTRICAL SHOCK.



**ATTENTION:** WHEN THE CASE OF THE APPLIANCE (OR ITS REAR PARTS) ARE REMOVED THERE IS A RISK OF A FIRE OR INJURY BY ELECTRICAL SHOCK. THERE ARE NO COMPONENTS INSIDE THE APPLIANCE THAT THE USER CAN REPAIR ON THEIR OWN. HAVE ALL REPAIRS PERFORMED BY QUALIFIED SERVICE TECHNICIANS.



The flash symbol inside an equilateral triangle informs the user that there are uninsulated conductors inside the appliance under "dangerous voltage", which may cause injury to persons by electrical shock.



The symbol of an exclamation mark inside an equilateral triangle informs the user about important instructions in the attached publication regarding the operation and maintenance of the appliance.



### ATTENTION

In order that you use the product properly, carefully read the user's manual and save it for future use. In the event that the appliance requires repairs or maintenance, please contact an authorised service centre.



### ATTENTION

In the event that it is necessary to remove the case, first pull the power cord plug out of the power socket.

### 1. Read the user's manual

After unpacking the product, carefully read the user's manual, follow the instructions describing the controls and other tasks.

### 2. Power source

This appliance can only be connected to a power source with corresponding parameters as included on the rating label. If you are not sure about the parameters of your electrical system, please consult your vendor or your local power distributor. For products powered by batteries or other power sources, necessary information is contained in the user's manual.

### 3. Ventilation

The vents and slots on the case of the appliance are used for ventilation. They protect the appliance against overheating and so ensure its proper operation. Do not block or cover these openings. Do not block the ventilation openings by placing the appliance on a bed, couch, carpet or similar surface. It is only possible to place the appliance into a bookcase, cupboard or another confined area if proper ventilation is provided for and the conditions set by the manufacturer are met.

### 4. High temperatures

Do not locate the device in the vicinity of heaters, stoves, fireplaces or other sources of heat (including amplifiers). An open flame must not be placed on the appliance, e.g. burning candle.

### 5. Water and humidity

Do not use this appliance near water – e.g. next to a bath, kitchen sink, in a damp cellar, near a pool, etc. Do not place any containers filled with water (e.g. vases) on to the appliance.

### 6. Cleaning

Pull the power plug out of the power socket before cleaning. Do not use liquid or aerosol cleaning agents. Clean the appliance with a damp cloth.

### 7. Protection of power cords

Locate cables in such a way that they are not walked on and that they are not damaged by objects standing above or next to them. Pay special attention to locations where cables exit power sockets, extension cables and the appliance.

### 8. Overloading

Do not overload power sockets, extension cords or integrated switching sockets to avoid increasing the danger of fire or injury by electrical shock.

### 9. Storm

Before a storm or a longer period of time when you will not be using the appliance, disconnect the plug from the power socket. This will prevent damage caused by a lightning strike into the electrical system or by overvoltage.

### 10. Entry of items or liquids

Do not attempt to insert any objects into the ventilation openings. In the event that contact occurs with any part that is under current, or a short circuit occurs, there is a danger of fire or injury by electrical shock. Prevent liquids from entering into the appliance.

### 11. Connections

Do not use connection methods not recommended by the manufacturer, otherwise health or property may be put in jeopardy.

## 12. Accessories

Do not place the appliance on unstable carts, stands, tripods, shelves or tables. In the event of a fall, a child or adult could be injured or the device could be damaged. Use only carts, stands, tripods and tables recommended by the manufacturer or supplied as an accessory with the appliance. When attaching the appliance, use only original accessories and follow the instructions of the manufacturer. When the appliance is located on a cart, move it carefully. In the event that you quickly stop, exert excessive force or move over an uneven surface the cart may tip over together with the appliance.

## 13. Load

Do not step on the appliance or place heavy objects on it. If such an object were to fall, it could cause injury or damage the appliance.

## 14. Connecting

When connecting the appliance to another device, turn off all connected devices and disconnect them from the mains power supply. Carefully read the user's manual of the connected device before connecting it and proceed according to the provided instructions.

## 15. Volume

Turn volume down to the minimum level before turning on the appliance. In the event that emitted sound is too loud, it could lead to damage to your hearing or the loudspeakers.

## 16. Sound distortion

Do not allow the appliance to playback distorted sound for too long. This could lead to the loudspeakers overheating and subsequently a fire.

## 17. Headphones

Use a reasonable volume level when using headphones. Long term listening at excessive volume levels may damage hearing.

## 18. Records

Do not use cracked, deformed or repaired records. They may break up and cause serious injury or damage to the appliance.

## 19. Damage requiring repairs

If one of the following situations occur, disconnect the appliance from the mains and have it repaired by qualified service technicians:

- a) the power cord or plug was damaged;
- b) an object fell into the appliance or liquid entered it;
- c) the appliance was subject to the effects of rain or water;

- d) when operated according to the user's manual it does not function normally. Only adjust the setting that are described in the user's manual. Any other adjustments may cause serious damage to the appliance. In such an event, it may require extensive repairs to put the appliance back into working order;
- e) the appliance fell or was damaged in any way;
- f) if significant changes in the operation of the appliance are occurring – in such an event it is necessary to seek help at a qualified service centre.

## **20. Repairs**

Do not attempt to repair the appliance yourself. If you open the case, you are exposing yourself to the danger of injury by electrical shock and a number of other hazards. Leave all repairs to qualified technicians.

## **21. Spare parts**

If it is necessary to replace any components, make sure that the service technician uses either original components directly or such components where all the parameters correspond to the original. When inappropriate components are used, there exists a danger of a fire or injury by electrical shock.

## **22. Safety inspection**

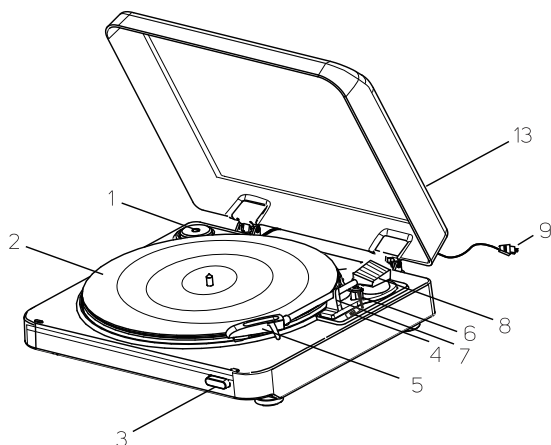
After completing any maintenance task, ask the technician to check that the appliance works properly.

## 1. Before first use

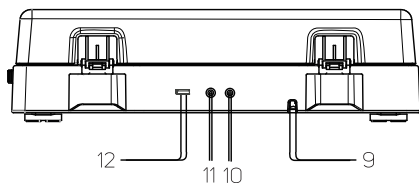
After unpacking the appliance ensure that the package includes the following:

The appliance  
User's manual  
USB cable  
RCA cable  
45 RPM adapter

## 2. Description of the device



1. 45 RPM adapter
2. Turntable disc
3. STOP button
4. Rotation speed switch (33/45/78 rpm)
5. Needle
6. Cue lever
7. Arm stand
8. Arm
9. Power cord
10. LINE OUT (L) jack
11. LINE OUT (R) jack
12. USB port
13. Protective cover

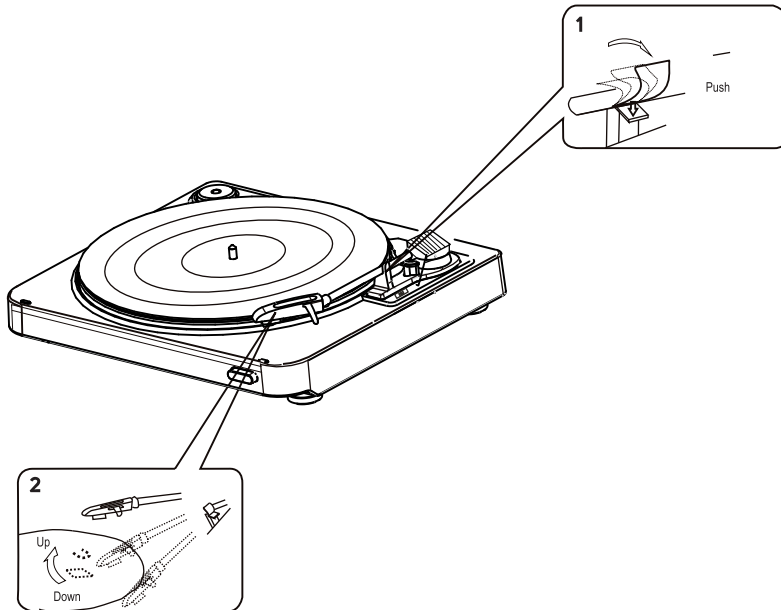


### 3. Before turning on

After unpacking, remove all packaging and advertising labels.

It is necessary to prepare the record player before first use. Proceed according to the following instructions:

- Release the clamp on the arm of the record player (see figure 1).
- Remove the needle cover (see figure 2).



## 4. Installation

Before first connecting the appliance, carefully read the user's manual.

**Note:**

Make sure that the appliance is turned off and disconnected from the mains power supply before performing the connection.

1. Insert the power plug (9) into a power socket.
2. Using an RCA cable, connect the record player (LINE OUT jacks (10/11)) with the input connector from the external device (e.g. amplifier or receiver).  
L (white) **===** L channel  
R (red) **===** R channel
3. For connecting to a PC, use the USB port (12).

## 5. Operation

### 5.1. Automatic playback (A)

It is possible to automatically playback LP records (30cm and 17cm); while SP records (17cm) cannot be played back.

1. Open the protective cover of the record player (13).
2. Place an LP record on to the turntable disc.
3. Select a rotation speed (45 / 33 / 78) using the rotation speed switch (4).
4. Lift the tone arm using the cue lever (6)
5. Lift and place the arm above the record.
6. Lower the tone arm using the cue lever (6) and the turntable will start to play automatically.
7. Set the volume on the amplifier.

After the record has finished playing, the arm will return to the home position.

### 5.2. Stopping during playback (B)

To stop playback, press the STOP (3) button.

#### Important information related to playing records

- Do not spin the tabletop disc or stop it or the record by hand. There is a risk of injury and damaging the appliance.
- Do not touch the arm of the record player while it is returning to the home position. There is a risk of damaging the appliance.
- Do not carry or otherwise handle the appliance while arm is not secured in the stand. Otherwise, you may damage the appliance.
- For playback, do not use flexible, scratched or otherwise deformed records. They could damage the turntable disc and the needle.

## 6. Maintenance

For cleaning use a clean and soft cloth, which you can dip lightly in water. Make sure that water does not enter into the appliance. For cleaning, do not use sponges with steel wool or steel wool itself as this could scratch the surface. For cleaning the exterior case, do not use thinners, petrol or solvents.

## 7. Technical specifications

System	belt drive
Motor	DC servomotor
Speed	33 – 1/3, 45 and 78 rpm
Fluctuation	0.15 % wrms
Arm	dynamically balanced type
Adjustable needle pressure range	3 g $\pm$ 0.1 g
Cartridge	MM (moving magnet)
Output voltage	2.5 mV
Power source	230 V ~ 50 Hz
Power input	3 W
Dimensions	370 x 345 x 100 mm
Weight	2.8 kg

## 8. Recording using "AUDACITY" software

The record player can be connected to a PC via the USB port and subsequently the played tracks can be recorded on the computer.

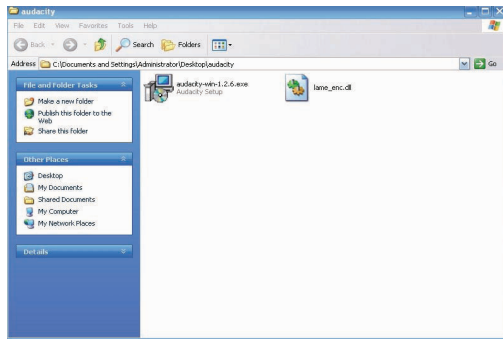
"Audacity" software is freely available, licensed under a GNU GPL (General Public Licence – Public licence). More information at: <http://audacity.sourceforge.net/download/>.

**Note:**

Make sure that you have installed the software before starting this function.

### 8.1. Installation procedure

Open the downloaded "AUDACITY" installation file.



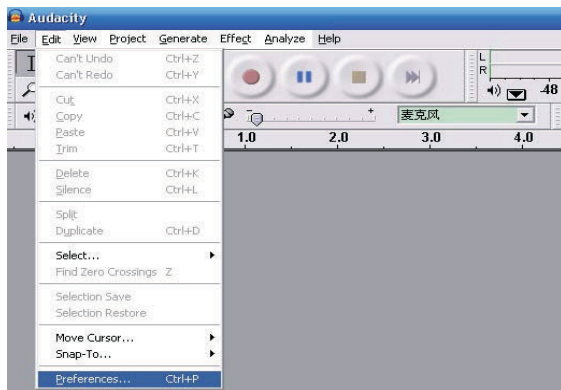
Select a language for the software installation.



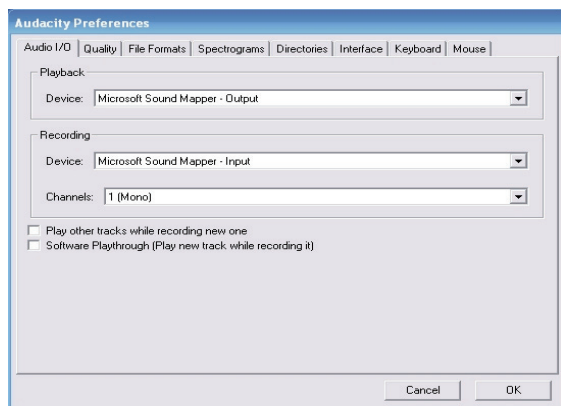
## 8.2. Software settings

It is necessary to setup the software after its installation.

Launch Audacity and then click on "Edit" (edit) and then on "Preferences" (preferences).



At the top left select the Audio I/O tab. In the row "Channel" select 2 (stereo).



### 8.3. Recording

Setup the record player for recording.



Click on the record button to start recording.



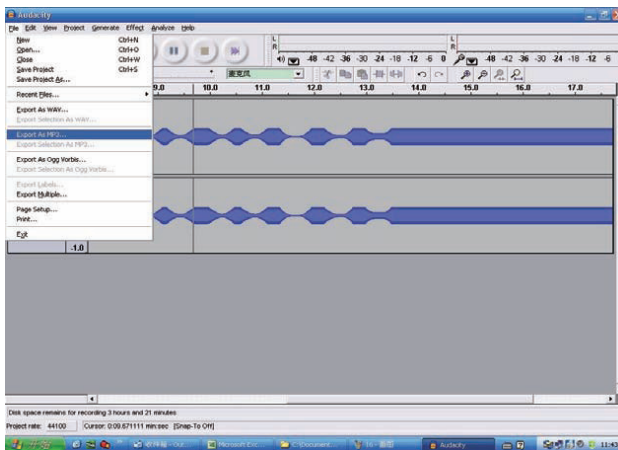
Click on the pause button to pause recording.  
Click again to continue recording.



Click to end the recording.

### 8.4. Exporting recorded files

Launch the "Audacity" program. Select a file and then select "Export as MP3" (export as MP3) or "Export as WAV" (export as WAV).



Then you will be able to save the recorded file on to your computer.

## INSTRUCTIONS AND INFORMATION REGARDING THE DISPOSAL OF USED PACKAGING MATERIALS

Dispose of packaging material at a public waste disposal site.



### DISPOSAL OF USED ELECTRICAL AND ELECTRONIC APPLIANCES

The meaning of the symbol on the product, its accessory or packaging indicates that this product shall not be treated as household waste. Please, dispose of this product at your applicable collection point for the recycling of electrical & electronic equipment waste. Alternatively in some states of the European Union or other European states you may return your products to your local retailer when buying an equivalent new product. The correct disposal of this product will help save valuable natural resources and help in preventing the potential negative impact on the environment and human health, which could be caused as a result of improper liquidation of waste. Please ask your local authorities or the nearest waste collection centre for further details. The improper disposal of this type of waste may fall subject to national regulations for fines.

#### For business entities in the European Union

If you wish to dispose of an electrical or electronic device, request the necessary information from your seller or supplier.

#### Disposal in other countries outside the European Union

If you wish to dispose of this product, request the necessary information about the correct disposal method from local government departments or from your seller.



This product meets all the basic EU regulation requirements that relate to it.

Changes to the text, design and technical specifications may occur without prior notice and we reserve the right to make these changes.

# SENCOR®

## EN Warranty conditions

**Warranty card is not a part of the device packaging.**

This product is warranted for the period of 24 months from the date of purchase to the end-user. Warranty is limited to the following conditions. Warranty is referred only to the customer goods using for common domestic use. The claim for service can be applied either at dealer's shop where the product was bought, or at below mentioned authorized service shops. The end-user is obligated to set up a claim immediately when the defects appeared but only till the end of warranty period. The end user is obligated to cooperate to certify the claiming defects. Only completed and clean (according to hygienic standards) product will be accepted. In case of eligible warranty claim the warranty period will be prolonged by the period from the date of claim application till the date of taking over the product by end-user, or the date the end-user is obligated to take it over. To obtain the service under this warranty, end-user is obligated to certify his claim with duly completed following documents: receipt, certificate of warranty, certificate of installation.

### **This warranty is void especially if apply as follows:**

- Defects which were put on sale.
- Wear-out or damage caused by common use.
- The product was damaged by unprofessional or wrong installation, used in contrary to the applicable instruction manual, used in contrary to legal enactment and common process of use or used for another purpose which has been designed for.
- The product was damaged by uncared-for or insufficient maintenance.
- The product was damaged by dirt, accident of force majeure (natural disaster, fire, and flood).
- Defects on functionality caused by low duality of signal, electromagnetic field interference etc.
- The product was mechanically damaged (e.g. broken button, fall).
- Damage caused by use of unsuitable media, fillings, expendable supplies (batteries) or by unsuitable working conditions (e.g. high temperatures, high humidity, quakes).
- Repair, modification or other failure action to the product by unauthorized person.
- End-user did not prove enough his right to claim (time and place of purchase).
- Data on presented documents differs from data on products.
- Cases when the claiming product cannot be indentified according to the presented documents (e.g. the serial number or the warranty seal has been damaged).

### **Authorized service centers**

Visit [www.sencor.eu](http://www.sencor.eu) for detailed information about authorized service centers.