

SENCOR®

Let's live!



**DIGITAL MUSIC SYSTEM
WITH CD AND BLUETOOTH**

OPERATING MANUAL

SSS 801

EN



Contents

1. Important safety instructions.....	2
2. Features	6
3. Description	7
3.1. Front panel.....	7
3.2. Rear panel.....	8
3.3. Remote controller	8
4. Use.....	11
4.1. Manual clock setting.....	11
4.2. CD input.....	11
4.3. LINE IN input.....	12
4.4. Bluetooth connection.....	12
4.5. Playback from USB	13
4.6. FM radio.....	14
5. Troubleshooting.....	16
6. Technical specifications	17

Declaration

We reserve the right to make corrections, modifications and translations of this manual without prior notice. For this reason, we recommend that you regularly visit our website to get the latest information.

1. Important safety instructions

General safety instructions

- Read these instructions. Follow this manual and the instructions inside.
- Heed all warnings.
- Follow all instructions.
- Use only the attachments and accessories specified by the manufacturer.
- **You must not put an open flame on the device, e.g. a burning candle.**
- Use the device in temperate climate.
- The manufacturer and vendor of the device are in not in any way liable for any direct or indirect damages caused by not following the instructions for installation, setup, operation, maintenance and cleaning of the device mentioned in this manual.
- Protect the device against impacts, falls, blows, shocks, vibration, moisture and dust.
- Before you agree to the use of the device by children, the children must be instructed in an age-appropriate manner about safe use of the device.

Installation, control

- Install the device according to the instructions in the manual.
- Leave free space around the device, it is necessary for proper air circulation. It helps to dissipate the heat generated by the operation of the device. By covering the air vents of the cabinet, you risk overheating and damage of the device. You must ensure that the air circulation will not be prevented by covering the air vents with e.g. newspaper, tablecloth, curtain, etc. Follow the installation instructions in the manual.
- Do not install the device in direct sunlight, or close to heat sources, like radiators, heat exchangers, stoves or other appliances (including amplifiers) producing heat. High temperatures shorten the life of the electronic components of the device significantly. Do not use and do not leave the device near an open fire.
- **The device must not be exposed to dripping or running water and you must not place upon it objects filled with liquid, e.g. vases.** Protect the device against becoming wet, sprayed on or poured on by any liquid, do not leave or install the device outdoors. Do not use the device outdoors. You risk electric shock or fire by not adhering to these instructions.
- Do not use the device close to water.
- Do not attempt to bypass the safety function of the polarized plug. If the plug cannot be plugged into your socket, refer to an electrician to replace your obsolete socket.
- Before plugging the device into the socket make sure the voltage in your socket corresponds with the voltage on the label of the device or power adapter.

- Make sure the power cord is not stepped on or compressed, especially near the plug and point leading from the device or adapter. The power plug (adapter) is used to disconnect the system and must be easy to access.
- Remember to always unplug the plug (adapter) from the socket before unplugging the power cord.
- Disconnect the power cord from the power outlet during thunderstorms, or when not in use for a longer period of time.
- Avoid carrying the device from a cool environment into a warm environment or vice versa, or operating the device in a moist environment. Air moisture may condense in some areas within the device case and may cause the device to become temporarily inoperable. In this case, leave the device in a warm and well-ventilated area and leave for 1–2 hours until the moisture evaporates. The device can be normally used again. Pay attention especially when using it in cold season.
- Under no circumstances are the manufacturer or vendor liable for any direct or indirect damage caused by the failure to observe the instructions for installation, configuration, operation, treatment and cleaning of this device included within this manual.

Repairs and maintenance

- To avoid risks of electric shock or fire, do not remove the device from the case – the case does not contain components that the user could repair or adjust without the necessary equipment and qualification. Refer to a professional service centre if your device requires service.
- In the event of any unusual occurrences during the use of the device, e.g. smelling the characteristic smell of burning insulation or even seeing a smoke, turn the device off immediately, disconnect the power supply and wait with continuing use of the device until you learn the result of its inspection by the service personnel.
- Leave all service to qualified service personnel. Service is necessary when the device is damaged in any way, for example in case of damage to the power cord, spilling liquid on the device, intrusion of foreign objects into the device, when the device is exposed to rain or moisture, if the device does not function in the usual manner or if it fell.
- Before cleaning, transferring and other maintenance disconnect the power plug (adapter) from the power outlet.
- Clean the device with a dry cloth only.
- Do not use gasoline, thinner or other solvents or abrasives, scouring pads, or sponges with scouring pads to clean the device.



WARNING

To prevent risk of fire or electric shock, do not expose the device to rain or moisture.

**WARNING**

The batteries must not be exposed to excessive heat, for example sunlight, fire, etc.

USB connector, notes on the use of the device:

USB memory devices require being connected directly into the device. To prevent a failing or interrupting data transfer, do not use USB extension cable.

Electrostatic discharge can cause the device to not function. In this case, the user must restart the device.

Before using a USB memory device, test that it communicates with the device and its read and write speed.

For maximum reading speed, we recommend to keep the disc space defragmented. Use file system FAT32, single partition, no protection. If the reading/writing of the memory device is not smooth, it can lead to undesirable effects, such as interruption of the image (blocky image) or failure of whole frames, audio malfunctions, and in extreme cases, stopping of the operation. Unexpected behaviour of the memory device or the presence of viruses or other malware, may cause stopping of functioning of the device and need to be restarted.

The USB connector is a standard type and cannot power a USB device with a high power consumption (e.g. hard drives). Use a device with its own power and power them with their own power supply.

The device was designed with respect to maximum compatibility with memory devices. Considering the variety of devices on the market, we cannot guarantee compatibility with every USB device available. Should problems persist, use another memory device.

WARNING: Do not open. There are no parts inside the device replaceable by the user. Leave repairs to a qualified technician.

WARNING: Never use a lubricant for any part of this device.

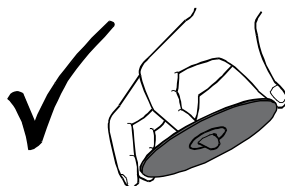
WARNING: Place the device on a level, firm and stable surface.

WARNING: Do not place this device on any other electrical device.

DECLARATION: Our company reserves the right to review the contents of this manual without prior notice.

Notes on discs**Handling discs**

- Do not touch the surface without label, which is the recording carrier. When moving the disc, hold the disc by the edges or by the edges and the central opening.

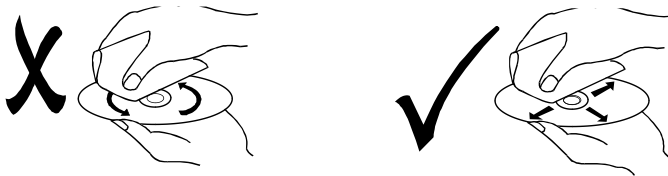


Do not stick labels on the discs – to label the disc use a special marker with soft felt tip made especially for this purpose, with which you can mark the label side of the disc.

- Return the disc in its cover after playback, where it is protected from scratching. Do not store the discs in direct sunlight or close to sources of heat, do not leave the discs in closed motor vehicles parked in direct sunlight. Risk of disc deformation.

Discs cleaning

- Fingerprints and dust affect the quality of the picture during playback of the disc. To remove them before playing clean the disc with a lint-free soft cloth. When cleaning a disc proceed from the center of the disc directly towards the edge (not in circular motion).



- Do not use anti-static sprays for vinyl records, benzene, alcohol or other solvents for cleaning the discs.

Notes:

1. Depending on the recording medium, recording method (PC program used for the making of the disc) and its finalization it is possible that some CD-R will not play on this player.
2. Do not attach any stickers or labels to either side of the disc (label side or recording side).
3. Do not use the player to play non-circular discs - when playing irregularly shaped discs you risk damage to the disc or to the player.

Warning

This player uses a laser system. To learn to use this device properly, please, read this manual and keep it for later reference.

The opening for discs is located on the side for safety reasons, to prevent exposure to laser radiation. Do not try to change or alter the opening for discs in any way. When inserting the disc into the player or during the replay, do not look into the opening for discs. Visible laser radiation could be emitted. Do not look at the laser beams.

WARNING:

THIS PLAYER IS A CLASS 1 LASER PRODUCT. USING CONTROLS, OR SETUP OR PROCEDURES NOT LISTED IN THIS MANUAL MAY RESULT IN EXPOSURE OF PEOPLE TO DANGEROUS RADIATION. SINCE THE LASER BEAM USED IN THIS DEVICE IS HARMFUL TO HUMAN EYESIGHT, DO NOT TRY DISASSEMBLE THE PLAYER. ALL SERVICE SHOULD BE DONE BY QUALIFIED PERSONEL.

2. Features

Thank you for buying our product. The music system is designed for home listening from many audio sources. Please, read the operating manual to use it properly. Keep the manual for future reference.

- Compatible with CD, MP3, CD-R/RW
- Remote controller with full range of functions
- Playing sound via Bluetooth connection
- Line input, headphones output
- FM tuner with 40 presets
- USB port

The content of the package besides the product itself:

User's manual



Power cable



Remote controller



FM antenna

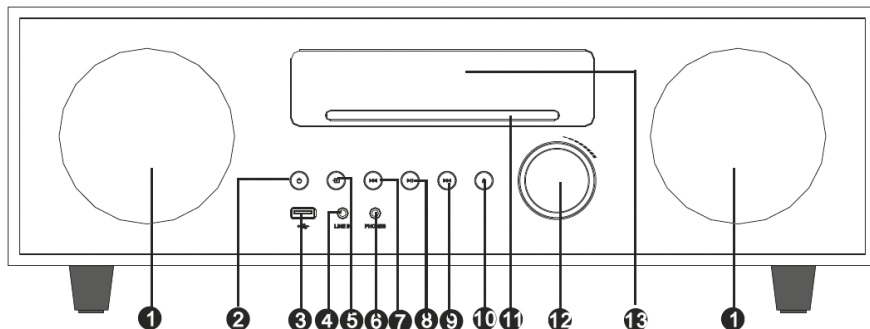


Battery



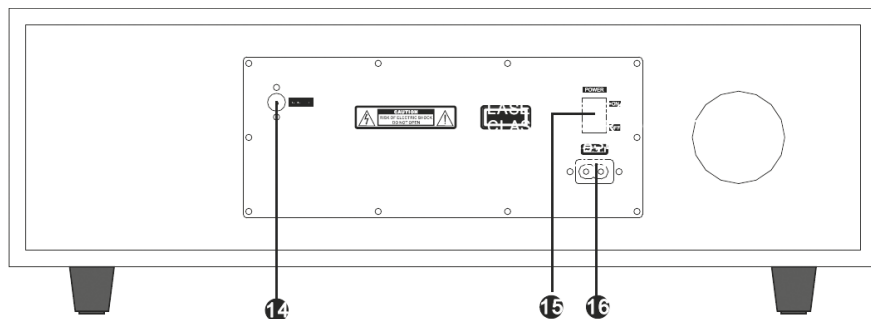
3. Description

3.1. Front panel



1. Speakers
2. Button **STANDBY** – turning the device on and turning it off into standby mode.
3. USB port
4. Stereo line input (mini-jack 3,5 mm)
5. Button **SOURCE** – selection of the audio source CD/USB/FM/Line in/BT.
6. PHONES – headphones output (mini-jack 3,5 mm), when connected, the speakers are turned off.
7. Button **Previous** (PREV) – for playback, for FM tuner lower number of a previously saved preset.
8. Button **Play/Pause** (Play/Pause) – for playing media, longer hold in Bluetooth disconnects the currently connected source.
9. Button **Next** (NEXT), for FM tuner higher number of a previously saved preset.
10. Button **Eject** (EJECT) – ejection of an inserted CD disc.
11. CD slot – slot to insert a CD disc. Insert the disc label side up, recording side down.
12. **VOLUME** (Volume setting button) – when turned it gradually changes the volume, left=down, right=up. This is so called infinite potentiometer, it has no zero position. The change of the volume status shows on the display e.g. "VOL 12". The range is 32 steps.
13. Status display, its brightness can be dimmed.

3.2. Rear panel

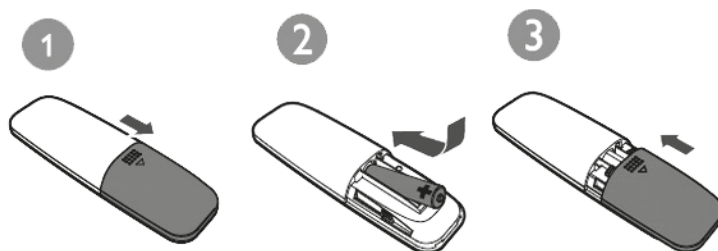


- 14. FM antenna input
- 15. Power button
- 16. Power cable jack

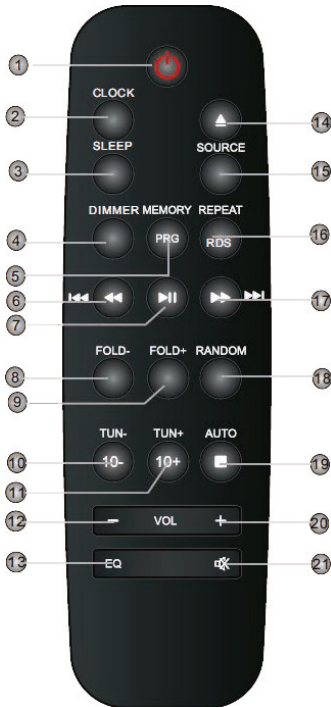
3.3. Remote controller

3.3.1. Inserting batteries

1. Open the battery cover.
2. Insert the battery in the right direction in the controller.
3. Close the battery cover.



3.3.2. Description of remote controller



1. **STANDBY** – turning the device on and turning off into standby mode.
2. **CLOCK** – showing time on the display instead of system status.
3. **SLEEP** (Sleep) – press repeatedly to set change into standby mode in 120/90/60/45/30/15 minutes or OFF – Sleep cancelled. If the sleep timer is set the display shows the lit symbol SL.
4. **DIMMER** – lowering the brightness of the display in 2 steps.
5. **PROG/MEMORY** – programmed CD playback or saving an FM station in a preset.

6. **FAST REWIND/PREVIOUS** – fast moving backwards (long press). Brief press – skip to previous track during media playback and to lower FM radio preset.
7. **PLAY/PAUSE** (Play/Pause) – for media playback, press and hold disconnects in Bluetooth the currently connected source.
8. **FOLD-** (Folder-) – jump to a lower file folder on CD-MP3/USB.
9. **FOLD+** (Folder+) – jump to higher file folder on CD-MP3/USB.
10. **10-/TUN-** – skip 10 tracks lower or tuning of FM radio, brief press a step lower, long press searching lower bandwidth.
11. **10+/TUN+** – skip 10 tracks higher or tuning of FM radio, brief press a step higher, long press searching higher bandwidth.
12. **VOLUME-** – lowering volume, the status is shown on the display, e.g. “VOL 12”. The range is 32 steps.
13. **EQ** – cyclic switching of preset equalizers Classic/Jazz/Pop/Rock/Flat.
Note: The equalizer affects only the speakers’ output, the headphone output does not change and you can use it as a line output for another amplifier.
14. **EJECT** (Eject) – eject inserted CD disc.
15. **SOURCE** (Source) – selection of audio source CD/USB/FM/Line/BT.
16. **RDS/REPEAT** (Repeat) – select repeat of one (REP ONE), all (REP ALL) or cancel repeat (REP OFF). When pressing repeatedly in the FM mode you switch the display of available RDS information about the given station.

17. **FAST FORWARD/NEXT** – fast move forward within the track (long press). Brief press – skip to the next track during the media playback and to higher preset of the FM radio.
18. **RANDOM** (Random) – playback of the available tracks in random order (RDM) or cancel (RDM OFF).
19. **STOP/AUTO** – stop playback. Long press in the FM mode will start scanning the entire FM band and save the available radio stations to presets 1-40.
20. **VOLUME+** – increasing volume, the change of status is shown on the display, e.g. "VOL 12". The range is 32 steps.
21. **MUTE** (Mute) – immediate muting of sound and resuming of sound when pressing again.

3.3.3. Remote controller use

To control the device using a remote controller, direct the controller towards the device and press the button for the desired function. The effective range of the remote control is about 5 meters with deviation +/- 30° off the perpendicular direction to the remote control sensor on the front of the device. Reduced capacity of the batteries reduces gradually the effective range of the remote control.

Prevent entry of strong light (e.g. sunlight or strong light from fluorescent or energy-saving sources) that may limit the efficiency and reliability of infrared remote controller.

- At the moment of application there must not be any obstacles between the controller and the device.
- During standard use the lifetime of batteries in the remote controller is about 1 year. When there is a significant reduction of the controller's range or when there are problems with controlling the device, replace the battery with a new one.
- If you do not use the controller for longer time, remove the battery – you will prevent damage to the controller by a possible leak.
- Batteries must not be exposed to excessive heat, like direct sunlight, fire, etc.
- Do not charge, heat, open or short the batteries.
- If there is an electrolyte leakage from the batteries, have the remote control serviced by an authorized technician.

4. Use

Place the device on a level and firm surface. To listen to the pure sound speakers should be directed directly into the listening area and for proper functioning of the woofer and the audio socket device leave at least 5 cm between the wall and the device and leave the space free. Loose and vibrating objects surrounding the device can react with the acoustic waves and distort the sound from the speakers.



LOCATION WARNING:

The bass speaker is located at the bottom side of the device. Do not cover it and do not touch it with hands. Make sure that there is no obstacle under the device! On the back wall is the output of the bass reflex, do not cover it or block it.

In following chapters we will describe the specific operation in different modes, which complements the general functions described in the remote controller. Except for setting the clock, which is performed in the standby mode, the other modes are operational, performed when the device is on.

4.1. Manual clock setting

If there is no FM radio station within range, which transmits time information in the RDS system, the clock can be set manually.

Press and hold in the standby mode (STANDBY) the CLOCK button on the remote controller. The display flashes clock setting. The first selection is 12 or 24 hours time display format, select by pressing the buttons PREV **6** / NEXT **17** and confirm by pressing CLOCK. The hours start flashing, using again the buttons PREV **6** / NEXT **17** set the hours and confirm by pressing CLOCK and similarly set the minutes. After the last press, the internal clock starts and the colon between the numbers flashes in the rhythm of seconds.

4.2. CD input

Press repeatedly SOURCE on the remote controller or on the front panel to select CD as source. Wait a moment, the device will verify the presence of a disc in the tray and when a disc is absent it will display report "NO DISC". Insert the CD disc halfway in the slot for CD on the bottom of the status display label side up, recorded side down. The device will pull the disc inside, will read the disc (READ) and display its content – the number of tracks and the total time of CD-DA (displayed CD symbol) and the number of folders and tracks in CD-MP3 (displayed MP3 symbol). The device starts playback

4.2.1. Programmed playback

When stopped (STOP), press the button PRG **5**, and the position PO1 starts flashing on the display. Select the track number, press buttons PREV **6** / NEXT **17** and save it by pressing PRG. The second position PO2 starts flashing, save the selected track there in the same way. Once you save your whole sequence (program) start program playback by

pressing PLAY. During playback the number of the track on the disc alternates with the position in your program. Stop playback by pressing STOP, on the display remains lit the program "PROG" and the number of positions, which it contains. When you press PLAY, the program will play again, if you press again STOP, the program will be erased, the same happens when you remove the disc.

Note:

If after inserting the CD disc the device refuses to read it or ejects it, try to clean dust and dirt off the disc. If the device again rejects the disc, do not try to insert it again, the disc is unsuitable for the device or unreadable. The device remembers the location where the playback was interrupted and when you insert the last played disc it will start from the location of the interruption. You cancel this memory of the last interruption by inserting another disc.

Note on CD:

- Use only standard audio CDs with a diameter of 12 cm, standard CD-DA or CD-MP3.
- Do not use scratched or dirty discs. Do not use discs of smaller diameter, non-circular disks, irregularly shaped discs! Do not use discs with damaged or broken edges or double sided discs!
- Do not attempt to play SA-CD discs!
- Make sure that disc is always clean and avoid scratching it! Store discs in designated cases.
- If the unit just draws the disc inside ("CLOSE"), do not touch the disc, do not push it or attempt to remove the disc!
- Do not attempt to insert another disc when one is already inside! Even if the inserted disc is unreadable and after displaying READ the report NO DISC appears. First, eject the inserted disc by pressing the button EJECT.

4.3. LINE IN input

You can plug in the LINE IN input using cable with mini-jack 3.5 mm an external stereo analogue signal source, such as MP3 player, cell phone, etc. Press SOURCE repeatedly until the display shows "LINE IN".

Tip for volume adjustment

First, adjust the volume on your signal source or device to a minimum, then gradually increase it to the desired level. This will avoid unpleasant surprises with a loud sound when the volume is improperly set. Keep the volume of all grades under the level that could cause a distortion.

4.4. Bluetooth connection

Press repeatedly the button SOURCE until the display shows flashing "BT". The flashing means that there is no audio source connected to Bluetooth.

Switch on Bluetooth on your phone (tablet) and select from the located devices SSS801 for pairing. Once the devices are mutually verified and connected, the Bluetooth connection is established, the "BT" on the display remains lit without flashing and the speaker emits gentle beep. If you do not intentionally cancel the pairing in your phone, then next time when you turn both devices on you do not have to perform the pairing again. If they are both in the Bluetooth mode they will automatically connect within moments. This is usually true if the last connected device in your phone was this device or you give it a priority. For differences in operation, see the instructions of your connected phone.

When you have an active Bluetooth connection with your phone, which is properly equipped, you can use for basic control of your phone the buttons PLAY / PAUSE, PREV, NEXT to pause and start playing and to skip to the next or previous track.

**NOTICE:**

Press and hold the button PLAY/PAUSE in the Bluetooth mode to disconnect the currently active Bluetooth connection when you e.g. want to connect another device.

Notes:

- The range of the Bluetooth connection is about 10 m and depends on ambient interference in the wireless range. Therefore keep the distance between your phone and device to a minimum.
- The volume of the source (your phone) in the Bluetooth system is usually independent on other settings. For satisfactory playback set it to maximum or near maximum and control the volume of the playback exclusively on the device.

4.5. Playback from USB

USB port is the most suitable for playing compressed music in MP3 or WMA format. The playback is the same like playing CD disc. When playing MP3 files, the display shows small MP3 symbol, for WMA files the symbol disappears. USB port is equipped with automatic input selection, when you insert the media the audio system selects the appropriate input. It then searches the connected memory and starts playing the first music file. If the memory does not contain any playable files, the display shows "NO SONG". Although the number of tracks is practically unlimited, orientation in larger collections can be difficult, so we recommend using smaller memory sizes, along with a smaller total amount of files and a clear division of the content into folders.

Note:

Keep the openings and contacts of the port clean. The playback reliability depends on the quality of connection. Use good quality and shortest cables for devices connected by USB cable; an appropriate type is usually included with the connected audio source (MP3 player, etc.). Do not use extension cables or a USB hub.

**NOTICE ABOUT USB POWER SUPPLY:**

The USB ports are designed to cover sufficiently the operating losses of the connected devices and are capable of powering the connected equipment to a standard level, i.e. 500 mA. If you want to connect a device with a higher consumption than 500 mA, use an external source for its power supply.

**NOTICE ABOUT COMPATIBILITY:**

Despite the best efforts for compatibility, the usability of all USB and memory devices on the market can not be guaranteed. In case of problems, reformat the memory in your computer to file system FAT / FAT32 and upload the files again. If problems persist, do not continue to use this device and replace it with another. Remember in particular that prolonged use degrades memory devices (e.g. fragmentation of content or wear), and are prone to error due to higher temperatures, respectively temperature and humidity fluctuations. Do not use memory storages, which use special locks, protection, or hidden areas or files, or can be attacked by viruses. Do not play files protected by systems for protecting copyright.

If there are irregularities in playback, discard the memory, if the device stops and can not be further operated (so-called freezing), turn it off, unplug it from the wall socket, remove the memory and then turn on the device normally.

4.6. FM radio

Press repeatedly SOURCE to select the FM mode. The display shows the tuned frequency. Press and hold the button AUTO **19** the device scans the FM bandwidth and saves the stations with sufficiently strong signal in up to 40 presets. When a station is found the screen briefly displays the number of the saved presets (some presets may be empty or produce a buzzing sound, it is an interference, e.g. from non-shielded computer that has the character of FM broadcasting). When the scan is finished you can browse among the presets using the buttons PREV and NEXT.

If you know the exact frequency of a particular broadcaster, you can tune on in steps by briefly pressing buttons TUN+ and TUN-, with long press you start a search in the given direction, which stops when receiving a station with sufficient signal.

You can save the currently played station under a particular preset number by pressing MEMORY **5**, and by selecting the preset number using the buttons PREV **6** / NEXT **17**. This allows you to assemble your favourite stations' list.

Note on the antenna:

It is better for good reception to connect a good quality external FM antenna in the rear antenna input instead of the wire antenna. Many stations will have better reception, without noise and with sufficient signal strength for stereo reception, indicated by the device with a small lit symbol ST on the display.

4.6.1. RDS system

RDS (Radio Data System) is a digital system for transmitting useful information of the broadcaster in analogue FM radio broadcasting. Not all stations broadcast RDS data or broadcast only partial information. Also, for data recognition without errors the signal must have sufficient strength. If the device detects receiving RDS data, the display shows the symbol RDS.

This device decodes some RDS information and reports it. These are:

- PS (Program Service Name) – name of the received station
- PTY (Program Type) – type of program of the station
- RT (Radio Text) – information about program, e.g. the name of the song, the performer, etc.
- CT (Clock Time) – shows time. Using it, the device automatically synchronizes its internal clock.

5. Troubleshooting

In case of problems review possible solutions below before you call service.

Problems	Cause and solution
Cannot turn on.	The power cord is not fully inserted in the outlets or is damaged or broken. Insert it correctly in the outlets or replace it with a new, undamaged one. Do not try to use a damaged power cable, it concerns your safety.
No audio from the selected source.	Playback is stopped or paused, the path of the sound is improperly set. First, check the cables and correct insertion of the connectors. Next, check that the source is playing and then make sure step by step that you have selected the correct audio input and each volume on the audio path is set to an appropriate non-zero level, e.g. in the mid-range.
Distorted sound.	High volume. Reduce the overall volume level, or at least one of the frequency band of the equalizer, which produces distortion.
Distorted sound.	Inappropriate levels on the sound path. Make sure that the volumes and levels are set properly (typically very large volume of the sound is in the next stage reduced to a minimum) and if the types of inputs and outputs are matched (e.g. a wrong thing is a connection of the line or headphone output into the microphone input).
The buttons do not work, the system does not respond.	Effect of static electricity or a critical error on a connected device. Disconnect the whole system from power, disconnect all connected devices and in a few minutes turn the audio system back on.
Unsatisfactory FM radio reception.	Weak or static signal of FM stations. Move the audio system to another place, change the position or the length of the antenna extension. Some reception areas though are not covered by sufficient signal or are very noisy (cellars, industrial parks, dense development, etc.). Connect a good quality external antenna.
Bluetooth connection cannot be established.	Incomplete connection initialization. Turn off the Bluetooth on the audio system and the connected system, turn it back on, cancel the pairing and locate it again and reset the pairing (or enter the code 0000).
Bluetooth is falling apart, BT controls do not work.	Long distance between receiver and transmitter or radio interference, different functions of the two BT devices. Reduce the distance between the BT devices to an absolute minimum, reduce ambient noise, pair the two devices again.

Problems	Cause and solution
Only half of the speakers work.	The sound signal is not present in both the stereo channels. Make sure that the audio signal is not in only one of the channels (as planned by the author) or the cable is not faulty or that any of the connectors is not incorrectly inserted.
Cannot play disc.	The disc is inserted upside down, is not a suitable type or is damaged, dirty, scratched, etc. Clean the disc, check its suitability and whether it contains music and pay attention to re-insertion. If the device will not play it again, discard such disc from playback.
The remote controller does not work or is unreliable.	The controller has a low battery, it is too far from the device, in the path of the infrared signal are obstructions or sensor on the unit is overwhelmed by strong light, e.g. from the sun or from fluorescent lamps or energy saving light bulbs. Check the battery in the remote controller or replace it with a new one, shorten the distance to the device, and shade the front panel of the device against undesirable light

6. Technical specifications

Power	AC ~ 100-240 V, 50/60 Hz
Power consumption	40 W
Maximum power output	2× 20 + 40 W
Frequency range	40 Hz – 20 kHz (6 dB)
FM bandwidth	87.5 – 108 MHz
CD frequency range	20 Hz – 20 kHz
CD signal/noise ratio	> 80 dB (1 kHz)
Operating temperature	-10 to 35 °C
Working humidity	5 to 90 %, non-condensing

The appearance of the device, features and specifications are subject to change without notice.

Manufacturer address: FAST ČR, a.s., Černokostecká 1621, 251 01 Říčany

The original version is in Czech.

The CE symbol shown on the unit, in the user's manual and on the package indicates the unit meets the basic requirements of guideline R&TTE, 1995/5/EC, Guideline for low voltage 73/23/EEC. The declaration of conformity can be found at www.sencor.cz.

INSTRUCTIONS AND INFORMATION REGARDING THE DISPOSAL OF USED PACKAGING MATERIALS

Dispose of packaging material at a public waste disposal site.



DISPOSAL OF USED ELECTRICAL AND ELECTRONIC APPLIANCES

The meaning of the symbol on the product, its accessory or packaging indicates that this product shall not be treated as household waste. Please, dispose of this product at your applicable collection point for the recycling of electrical & electronic equipment waste. Alternatively in some states of the European Union or other European states you may return your products to your local retailer when buying an equivalent new product.

The correct disposal of this product will help save valuable natural resources and help in preventing the potential negative impact on the environment and human health, which could be caused as a result of improper liquidation of waste. Please ask your local authorities or the nearest waste collection centre for further details. The improper disposal of this type of waste may fall subject to national regulations for fines.

For business entities in the European Union

If you wish to dispose of an electrical or electronic device, request the necessary information from your seller or supplier.

Disposal in other countries outside the European Union

If you wish to dispose of this product, request the necessary information about the correct disposal method from local government departments or from your seller.



This appliance complies with EU rules and regulations regarding electromagnetic and electrical safety.

Changes to the text, design and technical specifications may occur without prior notice and we reserve the right to make these changes.

SENCOR®

EN Warranty conditions

Warranty card is not a part of the device packaging.

This product is warranted for the period of 24 months from the date of purchase to the end-user. Warranty is limited to the following conditions. Warranty is referred only to the customer goods using for common domestic use. The claim for service can be applied either at dealer's shop where the product was bought, or at below mentioned authorized service shops. The end-user is obligated to set up a claim immediately when the defects appeared but only till the end of warranty period. The end user is obligated to cooperate to certify the claiming defects. Only completed and clean (according to hygienic standards) product will be accepted. In case of eligible warranty claim the warranty period will be prolonged by the period from the date of claim application till the date of taking over the product by end-user, or the date the end-user is obligated to take it over. To obtain the service under this warranty, end-user is obligated to certify his claim with duly completed following documents: receipt, certificate of warranty, certificate of installation.

This warranty is void especially if apply as follows:

- Defects which were put on sale.
- Wear-out or damage caused by common use.
- The product was damaged by unprofessional or wrong installation, used in contrary to the applicable instruction manual, used in contrary to legal enactment and common process of use or used for another purpose which has been designed for.
- The product was damaged by uncared-for or insufficient maintenance.
- The product was damaged by dirt, accident of force majeure (natural disaster, fire, and flood).
- Defects on functionality caused by low duality of signal, electromagnetic field interference etc.
- The product was mechanically damaged (e.g. broken button, fall).
- Damage caused by use of unsuitable media, fillings, expendable supplies (batteries) or by unsuitable working conditions (e.g. high temperatures, high humidity, quakes).
- Repair, modification or other failure action to the product by unauthorized person.
- End-user did not prove enough his right to claim (time and place of purchase).
- Data on presented documents differs from data on products.
- Cases when the claiming product cannot be indentified according to the presented documents (e.g. the serial number or the warranty seal has been damaged).

Authorized service centers

Visit www.sencor.eu for detailed information about authorized service centers.

