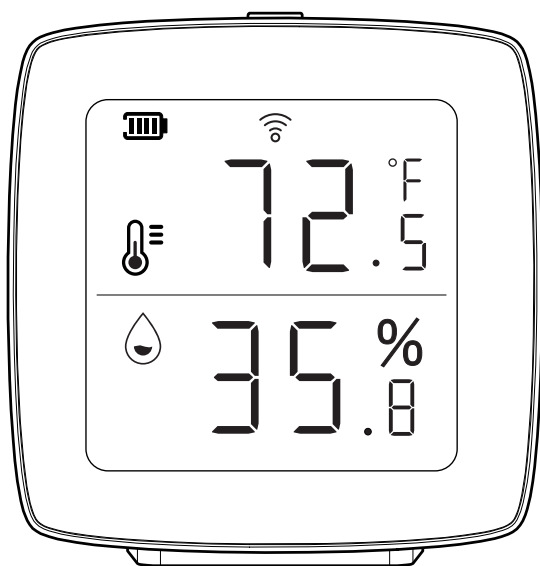




Thank you for your purchase. Questions, comments or feedback? We'd love to hear from you. Visit [feit.com/help](http://feit.com/help) for support.

## SMART TEMPERATURE & HUMIDITY SENSOR

### IMPORTANT SAFETY INSTRUCTIONS AND INSTALLATION GUIDE



Works with  
Feit Electric app



 **WiFi**  
Only supports  
2.4GHz Wi-Fi  
Networks

**READ BEFORE INSTALLATION.  
SAVE THESE INSTRUCTIONS.**

Questions, problems, missing parts?  
Before returning to store, visit [feit.com/help](http://feit.com/help) for further assistance.



REV003

We appreciate the trust and confidence you have placed in Feit Electric through the purchase of this product. We strive to continually create quality products designed to enhance your home. Visit us online to see our full line of products available for your home improvement needs. Thank you for choosing Feit Electric.

# Table of Contents

Table of Contents	2
Safety Information	2
FCC Statement	2
Limited Warranty	2
Pre-Installation	3
Description	3
Setup and Installation	4
App Setup	4
Connect Your Device	5
Troubleshooting Tips	5

## Safety Information

### IMPORTANT SAFEGUARDS:

ALWAYS FOLLOW BASIC SAFETY PRECAUTIONS WHEN USING ELECTRICAL PRODUCTS, ESPECIALLY WHEN CHILDREN ARE PRESENT.

#### Supplier's Declaration of Conformity:

47 CFR § 2.1077 Compliance Information

#### Responsible Party:

Feit Electric Company  
4901 Gregg Road,  
Pico Rivera, CA 90660, USA  
562-463-2852

#### Unique Identifier:

TEMP/WIFI



**CAUTION:** Please read all information carefully before installation.



**CAUTION:** Intended for indoor use.



**CAUTION:** This product is NOT a toy.

This device complies with part 15 of the FCC Rules. Operation is subject to the following two conditions: (1) This device may not cause harmful interference, and (2) this device must accept any interference received, including interference that may cause undesired operation. Note: This equipment has been tested and found to comply with the limits for a Class B digital device, pursuant to part 15 of the FCC Rules. These limits are designed to provide reasonable protection against harmful interference in a residential installation. This equipment generates, uses and can radiate radio frequency energy and, if not installed and used in accordance with the instructions, may cause harmful interference to radio communications. However, there is no guarantee that interference will not occur in a particular installation. If this equipment does cause harmful interference to radio or television reception, which can be determined by turning the equipment off and on, the user is encouraged to try to correct the interference by one or more of the following measures: Reorient or relocate the receiving antenna. Increase the separation between the equipment and receiver. Connect the equipment into an outlet on a circuit different from that to which the receiver is connected. Consult the dealer or an experienced radio/TV technician for help. Any changes or modifications not expressly approved by the manufacturer could void the user's authority to operate the equipment. CAN ICES-005 (B).

The device has been evaluated to meet general RF exposure requirement.

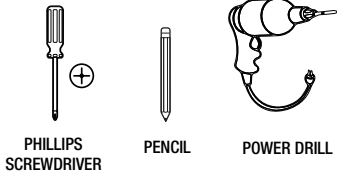
The device can be used in portable exposure condition without restriction.

The device can be used in mobile (min 7.87 in.) exposure condition without restriction.

## Limited Warranty

This product is warranted to be free from defects in workmanship and materials for up to 1 year from date of purchase. If the product fails within the warranty period, please visit [feit.com/help](http://feit.com/help) for instructions on replacement/refund or call 866.326.BULB. REPLACEMENT OR REFUND IS YOUR SOLE REMEDY. EXCEPT TO THE EXTENT PROHIBITED BY APPLICABLE LAW, ANY IMPLIED WARRANTIES ARE LIMITED IN DURATION TO THE DURATION OF THIS WARRANTY. LIABILITY FOR INCIDENTAL OR CONSEQUENTIAL DAMAGES IS HEREBY EXPRESSLY EXCLUDED. Some states and provinces do not allow the exclusion of incidental or consequential damages, so the above limitation or exclusion may not apply to you. This warranty gives you specific legal rights, and you may also have other rights which vary from state to state or province to province.

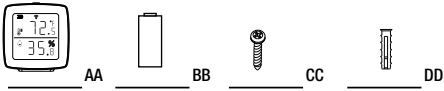
## TOOLS REQUIRED TO MOUNT SENSOR



## HARDWARE INCLUDED

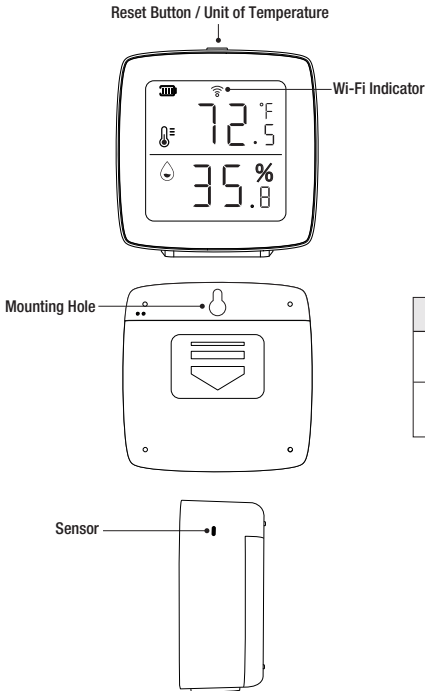


**NOTE:** Hardware not shown to actual size.



Part	Description	Quantity
AA	Temperature & Humidity Sensor	1
BB	1.5V AA Alkaline Batteries	3
CC	Mounting Screw	1
DD	Mounting Anchor	1

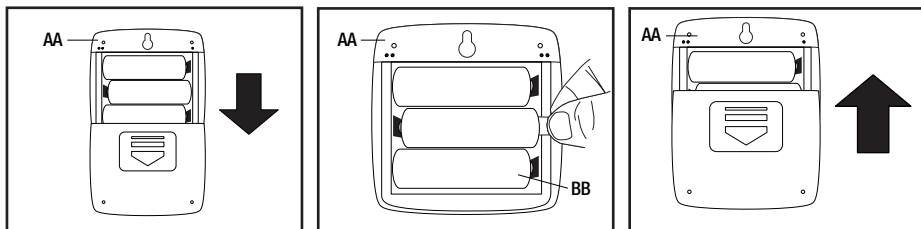
## Description



ITEM	DESCRIPTION
Wi-Fi Indicator	Blinking Wi-Fi: Pairing Mode
Reset Button	Press and hold the Reset Button for five seconds to enter pairing mode.

## 1 Setting Up Your Device

- Remove the Temperature & Humidity Sensor (AA) back cover.
- Insert three 1.5V AA Alkaline Batteries (BB) or remove the tag if batteries are inside the device.
- Close the back cover on the Temperature & Humidity Sensor (AA). Make sure the mounting hole is at the top.
- Follow instructions in the App Setup section to set up the device in the Feit Electric app.



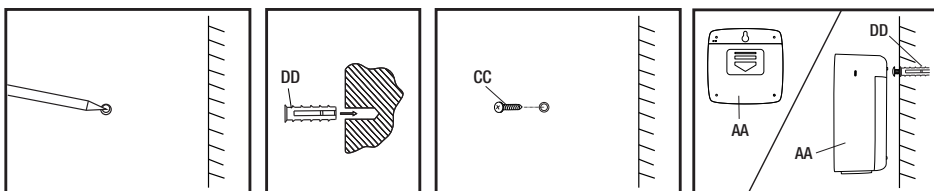
## 2 Installation Instruction

- Mark screw position on your wall.



**NOTE:** You can skip this next step if installing on wood or siding.

- Drill a hole at the marked point. Insert the Mounting Anchor (DD) into the hole.
- Fasten the Mounting Screw (CC) into the anchor. Leave about 1/4" of the screw threads exposed.
- Align the Temperature & Humidity Sensor (AA) mounting hole onto the screw. Adjust the screw if necessary to hold better.



## APP Setup

### Download and install the Feit Electric app

- Search for the Feit Electric app in the App Store or Google Play Store.
- Download and install the Feit Electric app on your smart device.

Be sure to connect to a 2.4GHz Wi-Fi network that covers your installation location.



Feit Electric App



## Need Help?

Thank you for your purchase. Questions, comments or feedback? We'd love to hear from you. Visit [feit.com/help](https://feit.com/help) for support or connect with us:



@FeitElectric



@FeitElectricInc



feitelectriclighting



## Open the Feit Electric app to complete the set up

- Tap Add Device or the + sign.



**NOTE:** The device must be rapidly blinking to connect. If not already blinking, press and hold the Reset Button for five seconds to enter pairing mode.



## Turn on Bluetooth

- The device name(s) will pop up on the Feit app. Tap on Go to add, then select the device to add.
- You will be prompted to enter your Wi-Fi network name and password.
- Only one device may be added at a time using Bluetooth set up. Repeat this step to add additional devices.
- Alternative set up options and help instructions are available in the Feit Electric app.



# Troubleshooting Tips

## If you are having difficulty connecting:

- Make sure the Wi-Fi network is a 2.4GHz network. Feit Electric smart device will not connect to a 5GHz network.
- Test your Wi-Fi network with other devices such as your phone to make sure it is operating properly.
- The Wi-Fi connection may not have good coverage during set up. Try moving the device closer to your Wi-Fi router.
- Your Wi-Fi network password is case sensitive, make sure you are entering it correctly.