

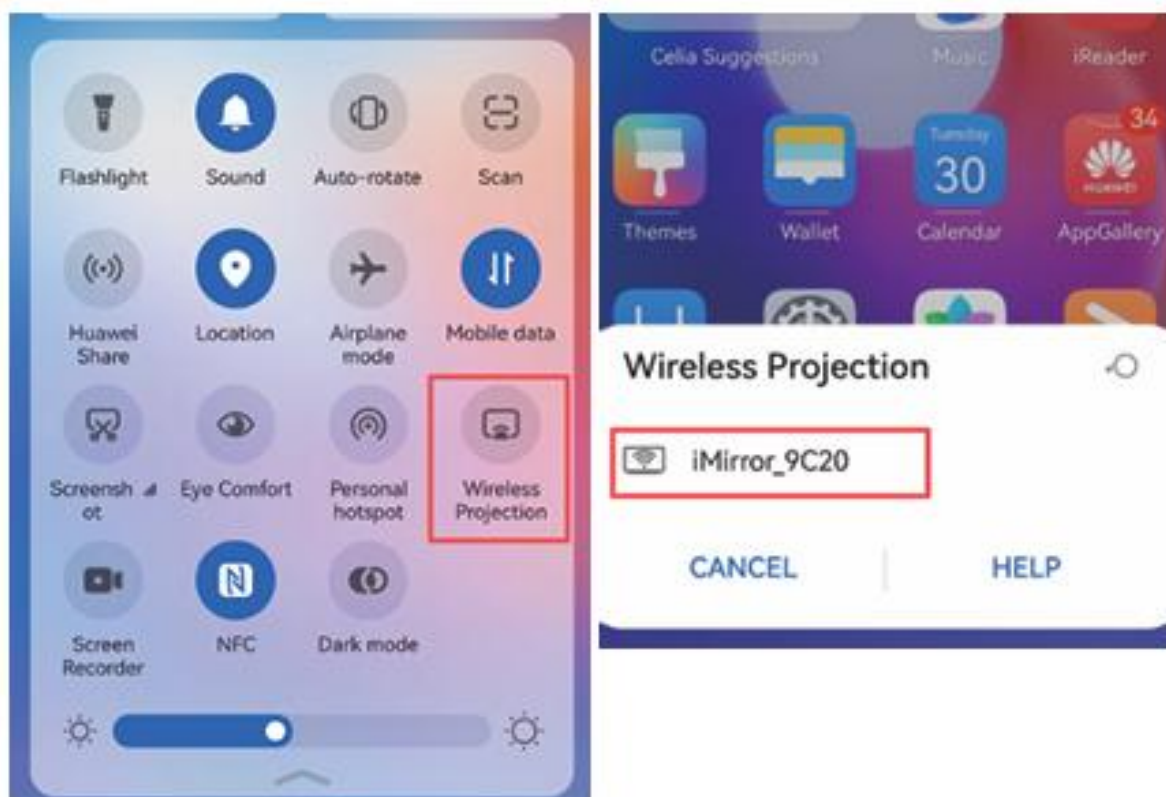
S03

User Manual

1 . Connecting the Mobile

1. Connection Steps for Android Phones

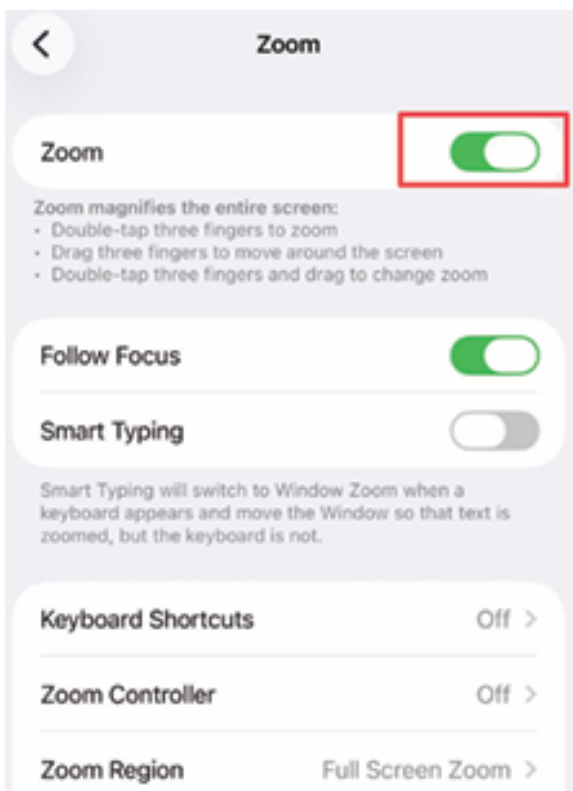
- Swipe down to open the phone's control panel, find and tap "Wireless Projection". Select the device named "iMirror_xxxx" from the list of available devices (if not found, directly search for "Projection" in the phone's settings).
- After successful projection, turn on the phone's Bluetooth and connect to the device with the same name "iMirror_xxxx". Once connected, the reverse control function can be realized.



2. Connection Steps for iPhone

- Swipe down to open the phone's control panel, tap "Screen Mirroring", select the "iMirror_xxxx" device, and enter the projection verification code "1234" to complete the projection.
- After projection, connect to the Bluetooth device with the same name "iMirror_xxxx". Then go to "Settings → Accessibility" on the phone and enable the "Zoom" function (the screen will zoom in when turned on; double-tap the screen with three fingers to restore normal display). At this point, the reverse control function can be realized.

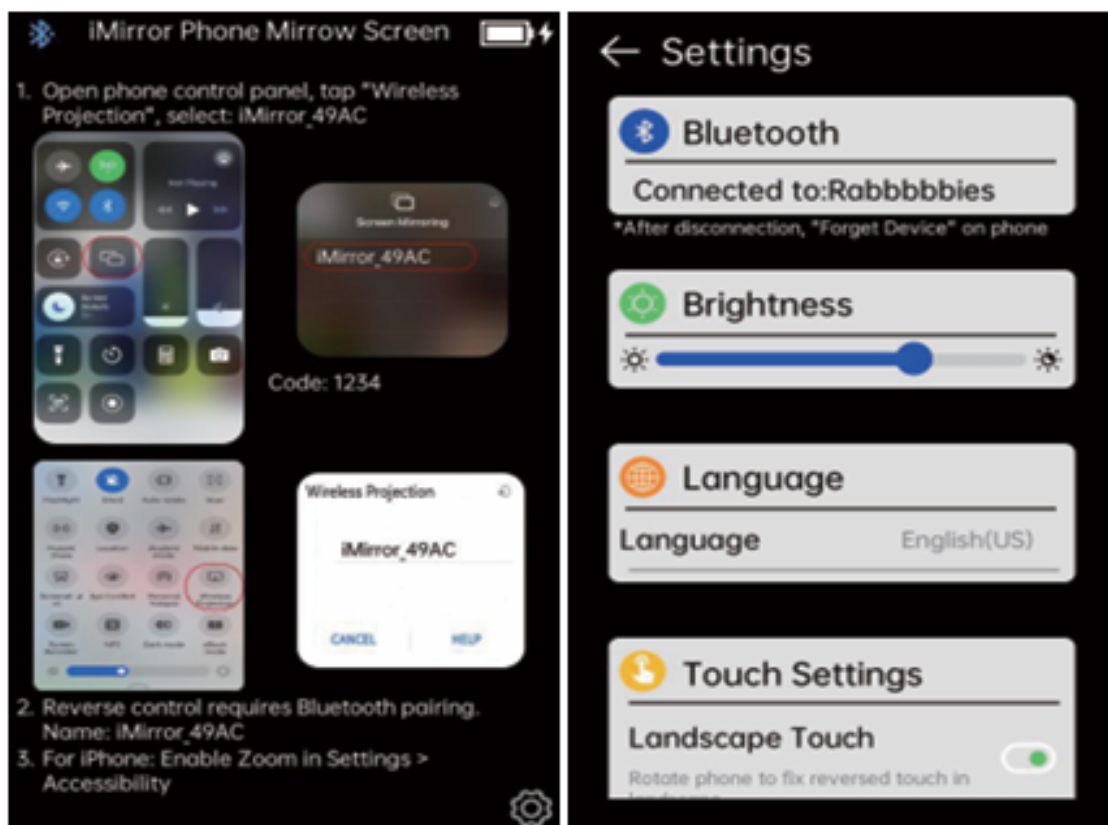


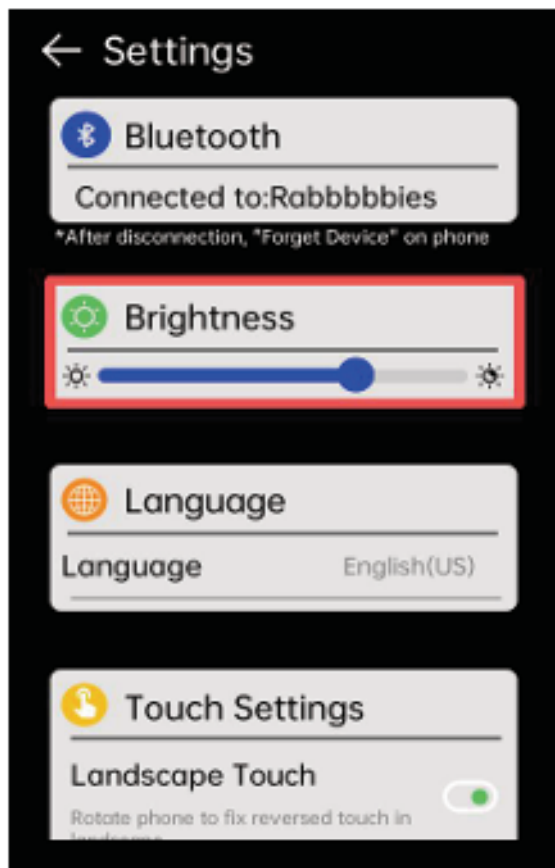


2 . Explanation of the Settings Interface

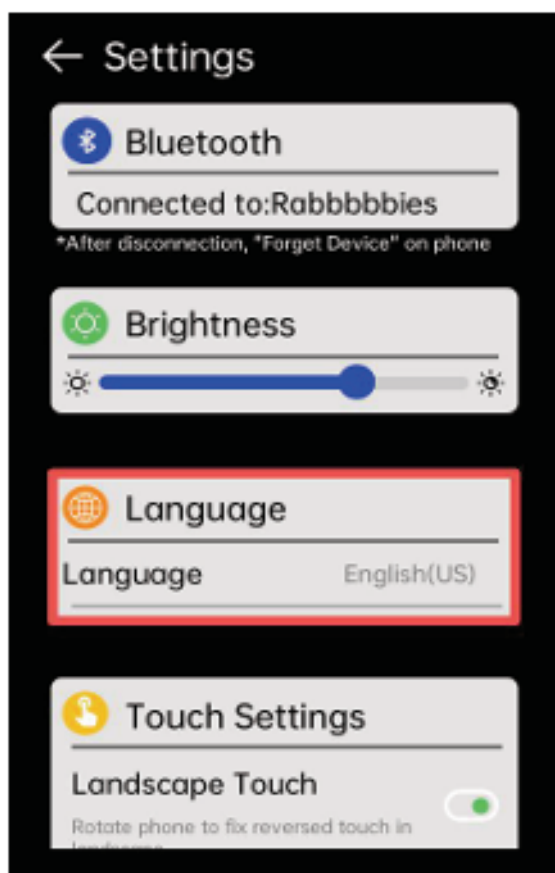
1. Bluetooth Icon

- After the Bluetooth is successfully connected, the Bluetooth icon in the upper left corner of the secondary screen will display a blue highlighted status, and the settings interface will prompt "Bluetooth Connected".
- To switch to another phone for connection, you need to first disconnect the Bluetooth on the currently connected phone and "Forget This Device" before another phone can reconnect.
- PS: If the Bluetooth device is not found, check if it has been connected to another phone.

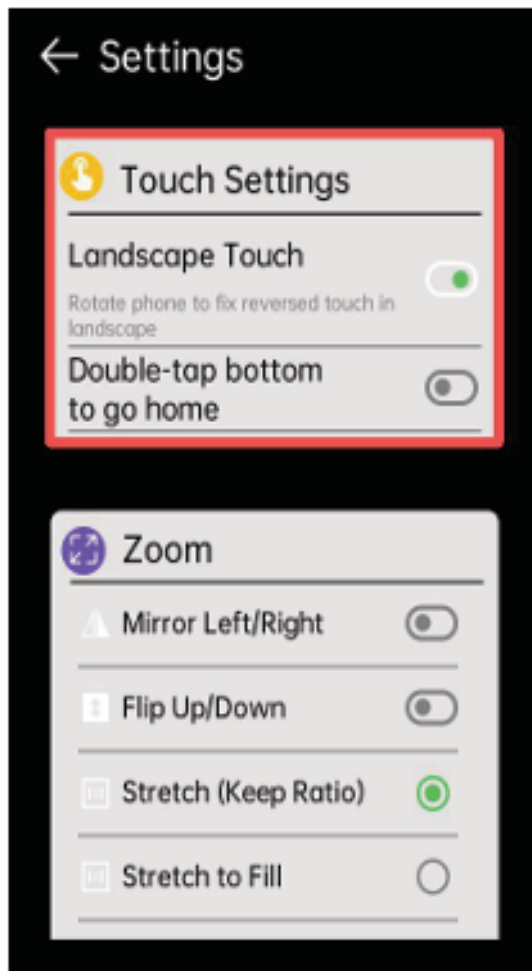




2. Brightness Setting Find the "Brightness" option and adjust the secondary screen brightness by sliding the progress bar.



3. Language Setting Currently, 10 languages are supported. You can directly select the desired language in the "Language" option (Simplified Chinese is displayed by default).



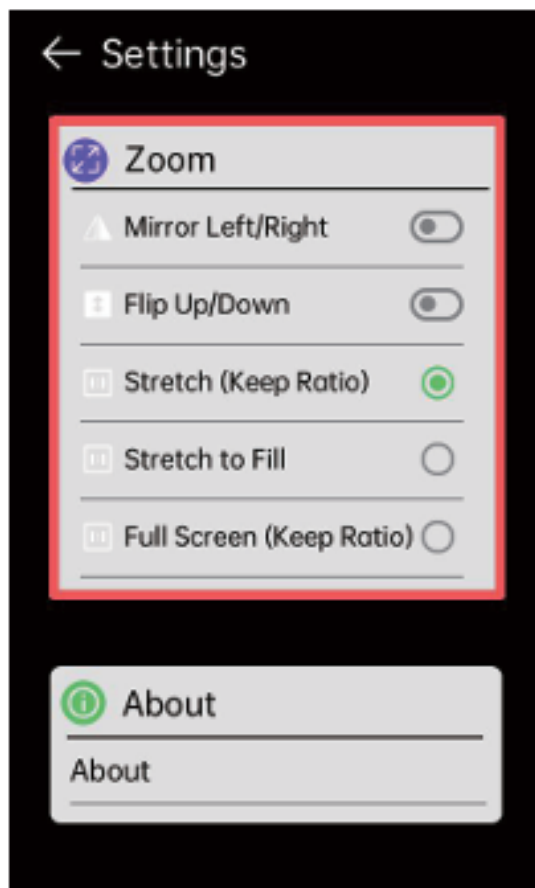
4. Landscape Touch

- First, turn on the "Landscape Touch" button in the secondary screen settings, and place the phone in landscape orientation at the same time.

- If the touch direction is reversed, rotate the phone to adjust the adaptation.

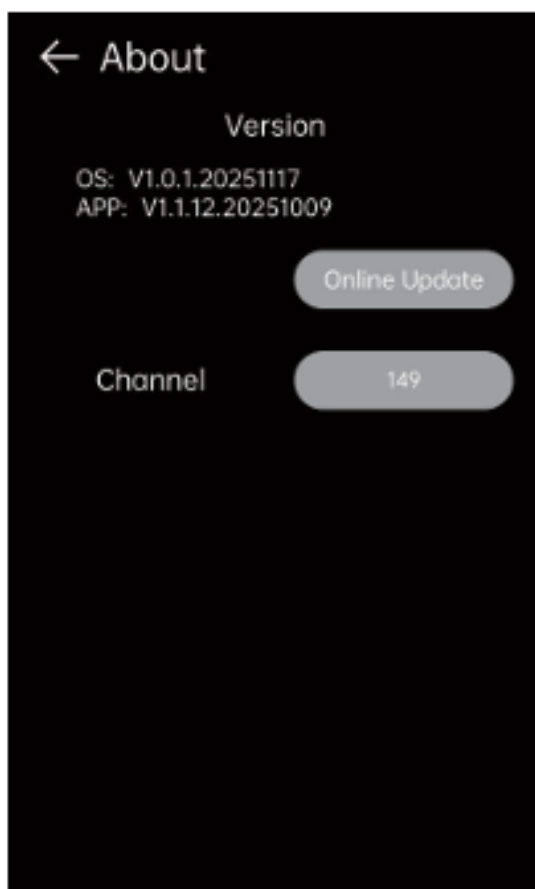
- After enabling the "Double-Tap Bottom to Return to go home" function, double-tap the bottom of the secondary screen in landscape mode to return to the phone's home screen.





5. Zoom Setting

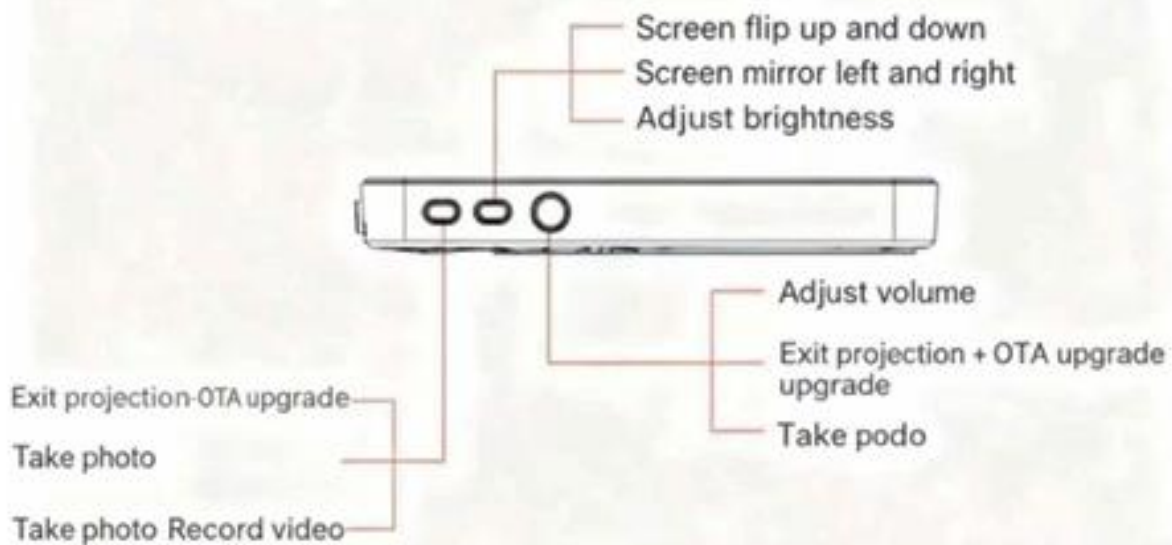
It is used to adjust the display effect of the projected screen, supporting modes such as "Mirror Left/Right", "Flip Up/Down", "Stretch (Keep Ratio)", "Stretch to Fill", and "Full Screen(Keep Ratio)". You can choose according to your needs.



6. About Interface

In this interface, you can view information such as the system version and application version number. You can also perform Online Update and select channels.

3 . Key Functions



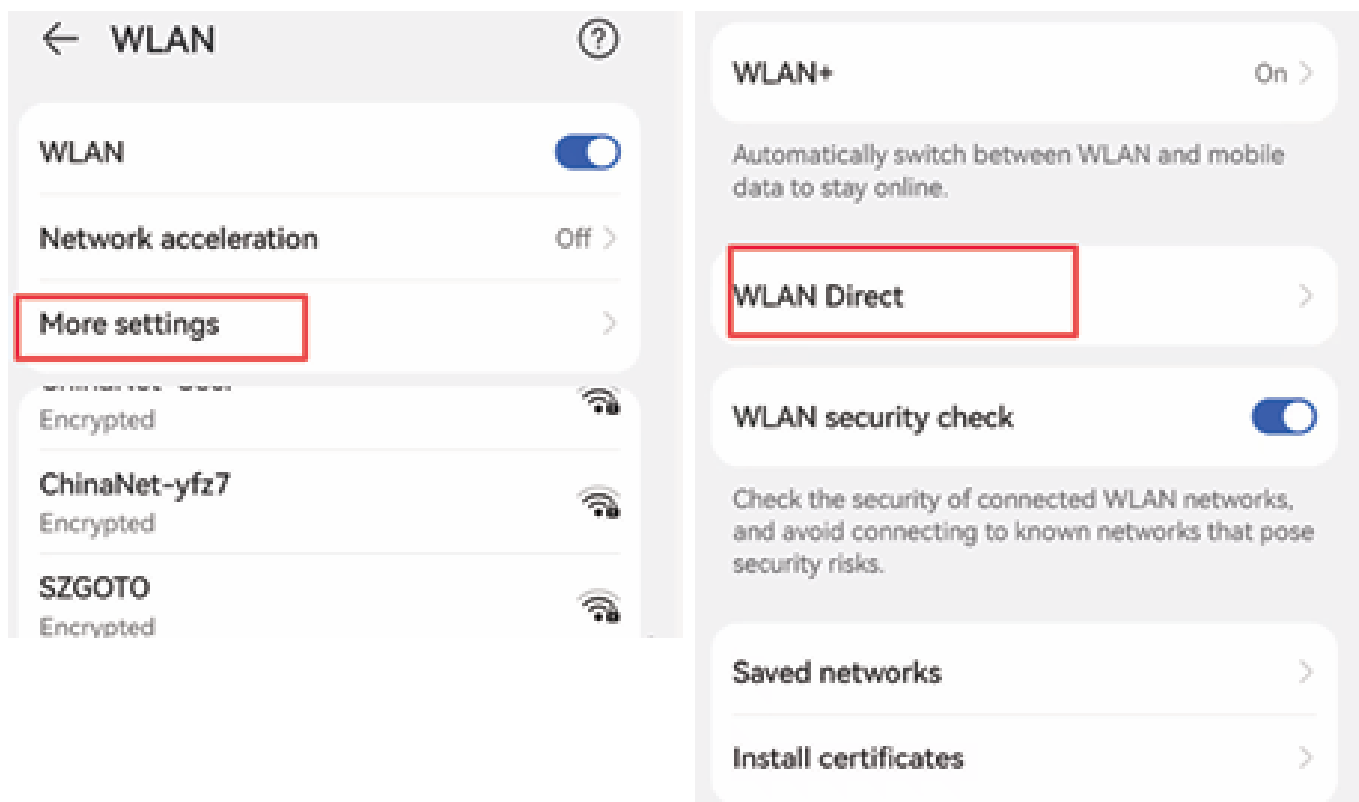
4 . OTA Upgrade

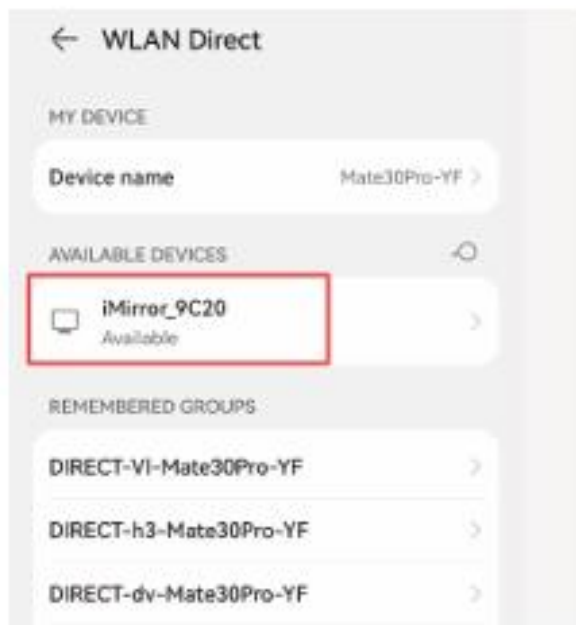


1. Long-press the brightness adjustment key until entering the OTA upgrade interface, as shown in the figure below:

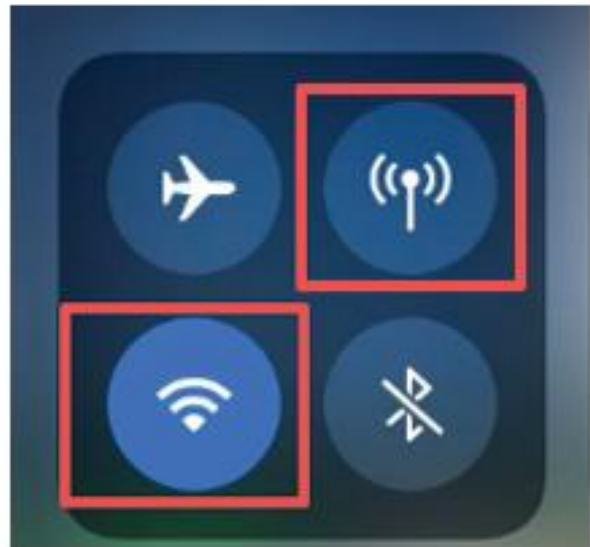
2. The connection methods for Android and iPhone are different, while other steps are the same.

Android : Open the phone's WiFi settings interface and connect to the device's iMirror_XXX via WiFi Direct. If the WiFi Direct option is not found, search for "WLAN Direct" in the settings interface.





iPhone: Connect the phone to the device's WiFi:iMirror_xxx, password: 12345678, and turn on cellular data at the same time.



3. Open a browser, scan the QR code on the device interface, or directly visit <http://192.168.1.101:1234>.



4. Enter the username: super and password: 123456.

5. Click "Check for Updates". During the upgrade process, ensure sufficient battery power and do not turn off the device.



6. Manual update is also available, provided that the upgrade file is saved in the phone in advance.



If you encounter problems during the use of the device, you can click "Feedback Issues" to submit the encountered problems to the server.



This device complies with part 15 of the FCC Rules. Operation is subject to the following two conditions: (1) This device may not cause harmful interference, and (2) this device must accept any interference received, including interference that may cause undesired operation.

Any Changes or modifications not expressly approved by the party responsible for compliance could void the user's authority to operate the equipment.

Note: This equipment has been tested and found to comply with the limits for a Class B digital device, pursuant to part 15 of the FCC Rules. These limits are designed to provide reasonable protection against harmful interference in a residential installation. This equipment generates uses and can radiate radio frequency energy and, if not installed and used in accordance with the instructions, may cause harmful interference to radio communications. However, there is no guarantee that interference will not occur in a particular installation. If this equipment does cause harmful interference to radio or television reception, which can be determined by turning the equipment off and on, the user is encouraged to try to correct the interference by one or more of the following measures:

- Reorient or relocate the receiving antenna.
- Increase the separation between the equipment and receiver.
- Connect the equipment into an outlet on a circuit different from that to which the receiver is connected.
- Consult the dealer or an experienced radio/TV technician for help.

FCC Radiation Exposure statement

The device has been evaluatec to meel general RF exposure requirement. The device can be used in portable exposure condition without restriction.