

Contact Information

Website: www.iLiveElectronics.com
Email Support: prodinfo@dpiinc.com
Email Parts: partsinfo@dpiinc.com
Phone Support: 1-888-999-4215

Warranty

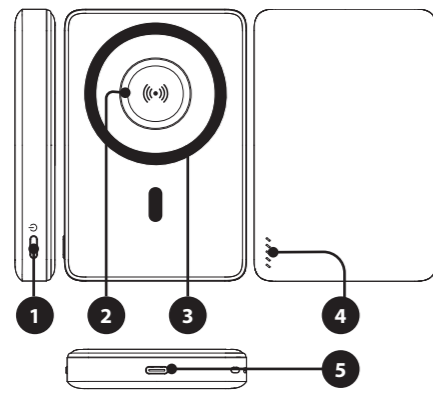
For Warranty Information and the most up-to-date version of this User's Guide, go to: www.iLiveElectronics.com.



Specifications are subject to change without notice.
 Copyright © 2026 Digital Products International (DPI, Inc.)
 All other trademarks appearing herein are the property of their respective owners.

ipcw10006-3501-manual-01 - 22Apr2026.indd 2-4

Overview



1. Power Button
2. Smartwatch Charging Pad
3. Smartphone Charging Pad
4. LED Battery Indicator
5. USB-C Port

ipcw10006-3501-manual-01 - 22Apr2026.indd 5-8

International Support

To download this User's Guide in English, Spanish, or French, or to get answers to frequently asked questions, visit the support section at:

www.iLiveElectronics.com

Para descargar este Manual del Usuario en Inglés, Español y Francés, o para obtener respuestas a preguntas frecuentes, visite la sección de apoyo en:

www.iLiveElectronics.com

Pour télécharger ce guide de l'utilisateur en Anglais, Espagnol ou Français, ou pour obtenir des réponses à des questions fréquemment posées, consultez la rubrique d'assistance sur:

www.iLiveElectronics.com

WARNINGS

- **WARNING:** To prevent fire or shock hazards, do not expose this unit to rain or moisture.
 - **WARNING :** Where the mains plug or appliance coupler is used as the disconnect device, such disconnect device shall remain readily operable.
 - Lithium batteries, like all rechargeable batteries, are recyclable and should be recycled or disposed of according to state and local guidelines. They should never be disposed of in normal household waste and they should never be incinerated, as they might explode. Contact your local government for disposal or recycling practices in your area.
 - Do not store in temperatures above 113°F or below 14°F.
- WARNING:** Risk of cancer and reproductive harm from exposure to DEHP.
 See www.P65Warnings.ca.gov

Tips for Use

- **Avoid Extreme Temperatures:** Do not leave the power bank in very hot or very cold environments.
- **Use Regularly:** Don't leave the power bank unused. Use it at least once every 2-3 months to maintain battery health.
- **Charge with a Compatible Charger:** Use a quality charger with the correct output (e.g., 5V/2A) to avoid damaging the internal circuits.
- **Store Partially Charged:** Charge the power bank to about 50-60% before putting it away.
- **Keep Dry:** Protect the power bank from exposure to moisture, rain, and liquids.
- **Prevent Physical Damage:** Avoid drops, strong impacts, or punctures.

ILIVE™
ELECTRONICS



10K WIRELESS POWER BANK WITH WATCH & USB-C CHARGING

User's Guide for Model IPCW10006B

4/22/2026 9:41:46 AM

5/12/2026 3:37:46 PM

Power On/Off

The power bank will power on automatically when connected to a device. Press the **Power Button** once to display the current battery level. Press the **Power Button** twice to turn off the power bank.

Charging Status

The number of lit up **LED indicator** lights shows the remaining power level of the bank. Please charge the power bank when the battery level drops to 25.

The fifth LED Indicator light will display a solid green light when the power bank is in wireless charging mode.

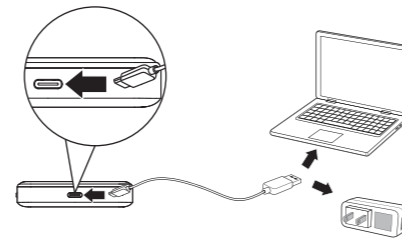
LED Indicator Lights	Meaning
/	25
//	50
///	75
////	100

Charging the Power Bank

To charge the power bank, plug the USB-C charging cable (included) into the **USB-C Input** on the power bank and a powered-on computer or UL certified USB power adaptor (not included) and standard power outlet.

Charging time is approximately 3-4 hours.

Note: The charging time above is based on using a fast charging adapter (not included) and the included fast charging cable. Using a standard charging adapter and/or standard charging cable will result in significantly longer charging times.



Charging your Devices

Connect your device to either the **Wireless Charging Pad** or **USB-C port**.

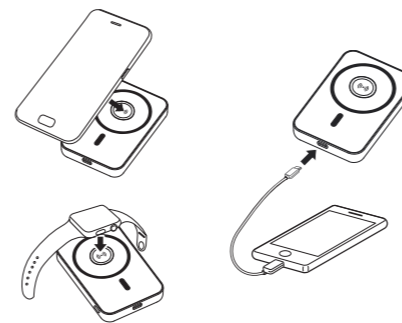
Wireless charging output: 5W/7.5W/10W/15W, 1.5W (watch charging)

Wired charging output: 5V/3A, 9V/2.22A, 12V/1.67A, SCP 10V/2.25A

The total battery capacity is 10000mAh.

The power bank generates heat while charging. Use only in a dry, well-ventilated area.

To maintain battery health, only charge the powerbank and your devices separately.



4/22/2026 9:41:47 AM

5/12/2026 3:37:46 PM

FCC WARNING

This device complies with part 15 of the FCC Rules. Operation is subject to the following two conditions: (1) This device may not cause harmful interference, and (2) this device must accept any interference received, including interference that may cause undesired operation. **Note:** This equipment has been tested and found to comply with the limits for a Class B digital device, pursuant to part 15 of the FCC Rules. These limits are designed to provide reasonable protection against harmful interference in a residential installation. This equipment generates, uses and can radiate radio frequency energy and, if not installed and used in accordance with the instructions, may cause harmful interference to radio communications. However, there is no guarantee that interference will not occur in a particular installation. If this equipment does cause harmful interference to radio or television reception, which can be determined by turning the equipment off and on, the user is encouraged to try to correct the interference by one or more of the following measures:

- Reorient or relocate the receiving antenna.
 - Increase the separation between the equipment and receiver.
 - Connect the equipment into an outlet on a circuit different from that to which the receiver is connected.
 - Consult the dealer or an experienced radio/TV technician for help.
- Note:** The Grantee is not responsible for any changes or modifications not expressly approved by the party responsible for compliance. Such modifications could void the user's authority to operate the equipment.
- The device has been evaluated to meet general RF exposure requirement. This equipment complies with FCC's RF radiation exposure limits set forth for an uncontrolled environment. This device and its antenna(s) must not be co-located or in conjunction with any other antenna or transmitter. The device can be used in portable exposure conditions without restriction.