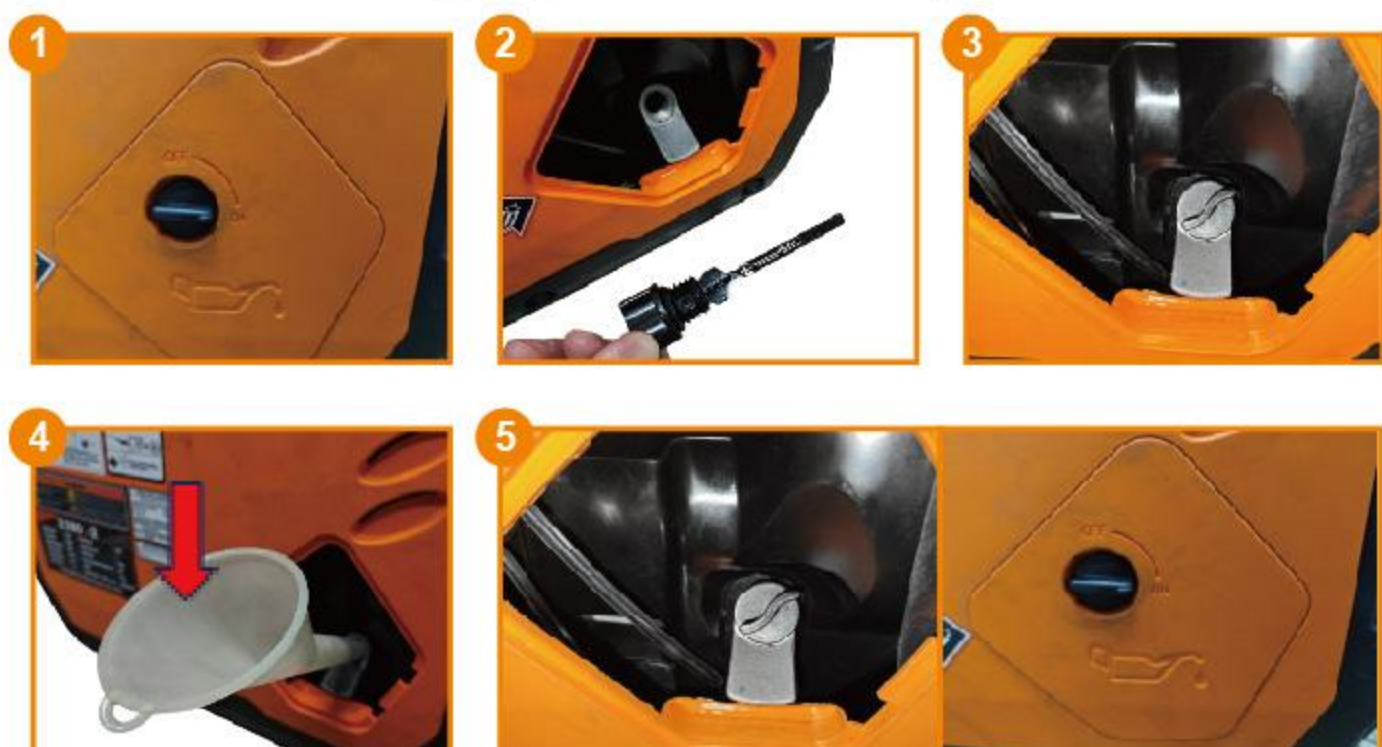


⚠ Put the generator outdoors in a ventilated and cool place to use, do not use the generator indoors!

Step 1: Fill with oil

- ① Place the generator on a horizontal place.
- ② Rotate the knob on the cover plate to the ON position and remove the cover plate.
- ③ Take off the oil gauge and check whether the amount of oil filling is accurate.
- ④ Fill 0.35L oil with funnel, recommended engine oil type: 10W-40.
- ⑤ Put back the oil gauge and cover the plate.



Step 2: Fill with gasoline

- ① Rotate the cap, and open it.
- ② Fill with 5L unleaded gasoline to the red indicator level.
- ③ Check the fuel level through the fuel gauge.
- ④ Cover the cap.



Step 3: Start the generator

- ① Turn the ventilation knob of the fuel tank cover to ON (If the cap is non-ventilation knob switch, this operation is not required).
- ② Rotate the switch on the cover plate to the "a" position.
- ③ Gently pull the starter until the cable is securely fastened, and then pull it strongly.

Note: After the machine running smoothly, rotate the switch control handle SLOWLY to "b" direction. When starting hot machine, rotate the switch to the "b" position firstly.



Note: When pulling the manual starter, grip the handle tightly to prevent the generator from falling.

Turn off the generator

- ① Cut off all connected electrical devices.
- ② Rotate the switch on the cover plate to "OFF".
- ③ Rotate the knob on fuel cap to "OFF" (If the cap is non-ventilation knob switch, this operation is not required).



CO Sensor Protection and Operation Instructions

Symptom: The generator is turned off, and the CO SENSOR on the panel flashes red.

Analysis: The CO concentration around the generator is too high, the

CO protection is triggered automatically, and the whole machine is turned off to avoid personal injury.

Troubleshooting:

1. Confirm whether the surrounding environment is ventilated.
2. Restart the generator in 30 seconds.



Replace the Oil Operating Instructions

- ① Rotate the knob on the cover plate to the ON position and remove the cover plate.
- ② Remove the oil dipstick and place a container for waste engine oil.
- ③ Tilt the generator at a 45 ° angle and slowly pour out the engine oil.



Note: Refill with fresh engine oil followed the STEP 1.