



FLEX-DESIGN SPRINKLER SET

Place your multi-adjustable sprinklers throughout your garden to get water right where you want it. Once the system is in place, use a programmable water timer to set a watering schedule and let your system do all the work. The system is completely modular and can grow with your needs.



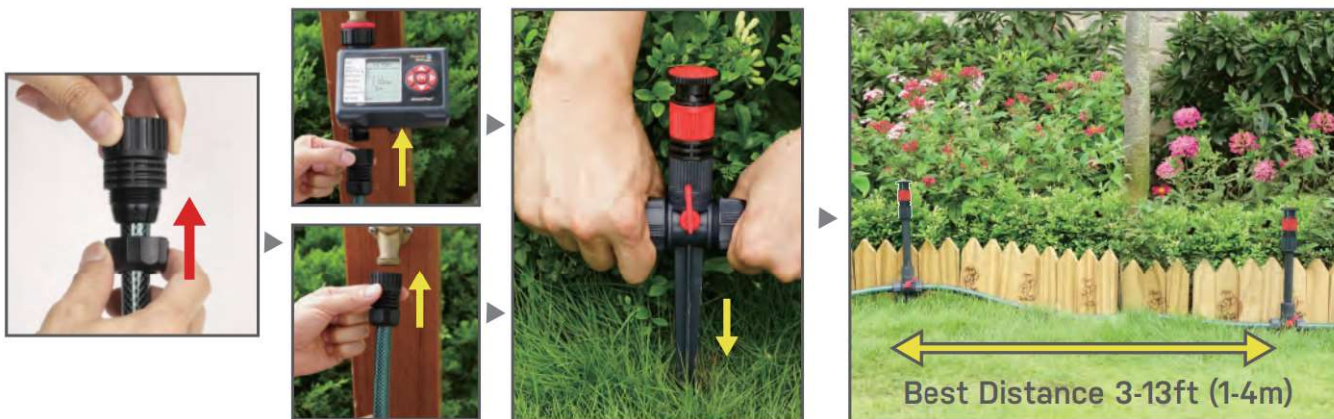
Get Started:

Attach the garden hose to the Hose Connector

Connect the hose to your faucet or water timer

Place the sprinklers in the area you want to water

Space sprinklers 3 - 13 ft. (1 - 4m) apart for best coverage. Each sprinkler waters up to 32 ft. diameter (10m)



Connect the Sprinklers:

Cut the hose to match the distance between sprinklers

Attach the hoses to the sprinkler by unscrewing the side hose connector

Insert the hose into the side hose connection then tighten the connector

Apply STOP End Cap at the end of circuit



Adjust the Spray:



Adjustable Spray Direction
360°





Adjustable Spray Width
1-360°





Flow Control to adjust the spray distance
waters up to **32ft.(10m)**



T-Connector Set Up:

If your faucet is in the middle of your watering area, use the T-Connector to split the water flow into two directions.



Add Height:

Add the 5" extensions where needed to water over taller plants. Stack multiple extensions together to further increase the watering height (up to 2 max).



Turn the Water On!



WARNING: This product can expose you to chemicals including styrene, which is known to the State of California to cause cancer. For more information go to www.P65Warnings.ca.gov.