

Pur  **Steam**
World's Best Steamers

PROFESSIONAL GARMENT STEAMER PS-910



User's Guide

Please read all instructions
before use.

IMPORTANT SAFETY INSTRUCTIONS



WARNING: The following basic safety precautions should always be followed when using an electrical appliance to reduce the risk of fire, electrical shock, or injury.

WARNING: To reduce the risk of electrical shock, this appliance uses a grounded plug. This plug will fit in a grounded wall outlet only one way. If the plug does not fit correctly in the outlet, contact a licensed electrician to install a proper outlet. Do NOT attempt to modify the plug.

WARNING: Please note that the PurSteam garment steamer has a safety shut off function for the heater, but not for the whole machine. If you neglect to turn off the garment steamer, the unit will shut off after the water has emptied. The light stays lit because the machine is still ON, but the safety shut off is still active. The thermostat will work according to the temperature: when there is enough water in the water tank, the water will flow into the boiler. When there is water in the boiler, the temperature of the thermostat will reach the correct point and the product will begin to work. When there is no water, the temperature of the thermostat will be reduced and the product will stop working. This means that the cycle is ongoing. When you fill water into the water tank and place it into the product, it'll begin working again without re-opening the product or pressing any switches.

READ ALL INSTRUCTIONS BEFORE USE

DANGER

Any appliance is electrically live even when switched off. To reduce the risk of electric shock:

1. Always unplug the power cord immediately after use.
2. Do not place or store the unit where it can fall or be pulled into a sink or tub.
3. Do not place the unit into water or any other liquids.
4. If the unit falls into water, immediately unplug the power cord. Do not reach into the water.

WARNING

To reduce the risk of burns, electrocution, fire, or injury to people:

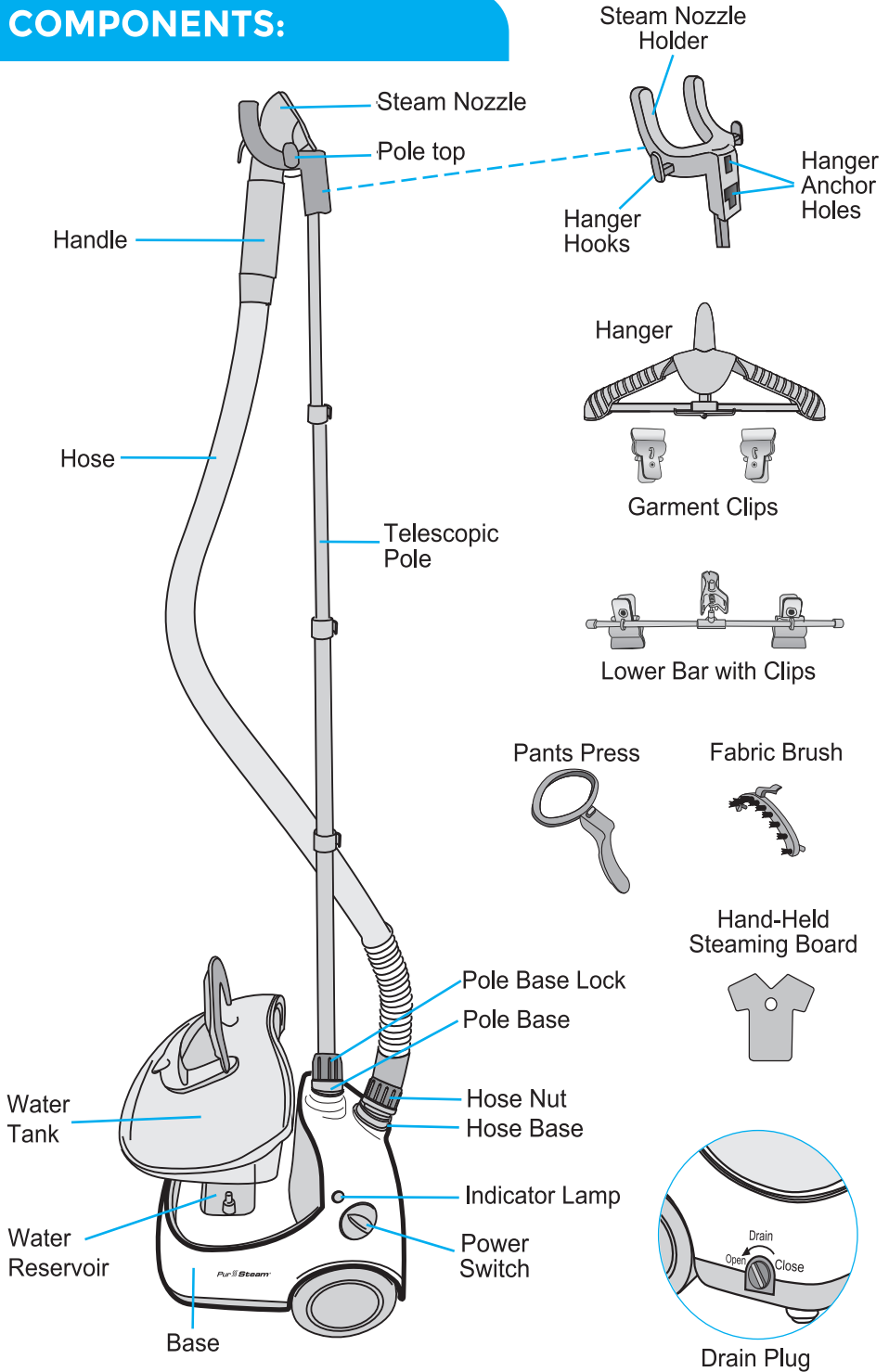
1. Use Professional Garment Steamer only for its intended purpose, as indicated in this manual.
2. If an extension cord is necessary, use a properly rated cord (15A, 14 gauge). Use care to position the extension cord where it is least likely to be damaged or tripped over during use.
3. Before plugging the power cord into an electrical outlet, be sure that all electrical information on the rating label corresponds to your power supply.
4. To reduce the likelihood of circuit overload, Do NOT operate another high wattage appliance on the same circuit as this unit.
5. Do not use power cord as a handle, let it hang over edges of counters, or be crimped, or closed in between doors.
6. Never yank the power cord to disconnect from outlet; instead, grasp plug and pull to disconnect.

7. Do not operate the unit with a damaged power cord or if the unit has been dropped or damaged. To avoid the risk of electrical shock, do not disassemble the unit; contact PurSteam Customer Support for examination and repair. Incorrect reassembly can cause a risk of electrical shock.
8. Do not allow the power cord to touch hot surfaces during use. Loosely bundle cord when storing.
9. Close supervision is required for any appliance being used near children and pets. Do not leave the unit unattended while plugged in.
10. This unit is not intended for use by people (including children) with reduced physical, reduced sensory or mental capabilities, or lack of experience and knowledge.
11. Do not use the unit where aerosol-based products are being used, or where oxygen is being administered.
12. Unit is only meant to be used with recommended Professional Garment Steamer (model PS-910) accessories. Using other types of attachments may cause damage to unit or personal injury.
13. If On/Off Switch does not illuminate when the unit is plugged in, and the Power Switch is set to the "ON" position, the unit is not operating normally. Immediately disconnect the cord from the power supply, then refer to the troubleshooting guide on Page 13 of this guide for assistance.
14. Do not attempt to use the unit without properly filling the Water Tank/Reservoir.
15. When filling the unit, only water should be used - other cleaning agents could damage the unit or cause injury. Distilled or demineralized water is highly recommended, in order to minimize potential build-up of mineral deposits.
16. To reduce the risk of contact with hot water emitting from the Steam Nozzle, test the appliance before each use by positioning it away from the body and turning it ON. Do not operate the unit if the Steam Nozzle is blocked.
17. Use caution when carrying unit upstairs or over obstacles, or when using the unit on or near an uneven surface.
18. Burns can occur from touching hot plastic parts, hot water, or steam. Do not touch the Steam Nozzle or attempt to connect any accessories while the unit is in use. Use caution when you turn the unit upside-down as there may be hot water inside.
19. When steaming any fabric for the first time, it is recommended that you consult the manufacturer's guidelines for the material being steamed. For items in question, test on an inconspicuous area before proceeding. Synthetic materials such as 100% nylon are sensitive to heat and may be damaged by exposure to hot steam. Steam is recommended for use only on natural fibers such as cotton, linen, wool, as well as nylon or polyester blends.
20. Always allow Professional Garment Steamer to cool (30 minutes for complete cooling) and empty Water Tank and Water Reservoir before storing.

SAVE THESE INSTRUCTIONS **FOR HOUSEHOLD USE ONLY**

Your satisfaction is guaranteed. If you are not completely satisfied with our Garment Steamer and the results it brings, we insist that you let us know. We'll help you make the Garment Steamer work for you, or we'll refund your money.

COMPONENTS:

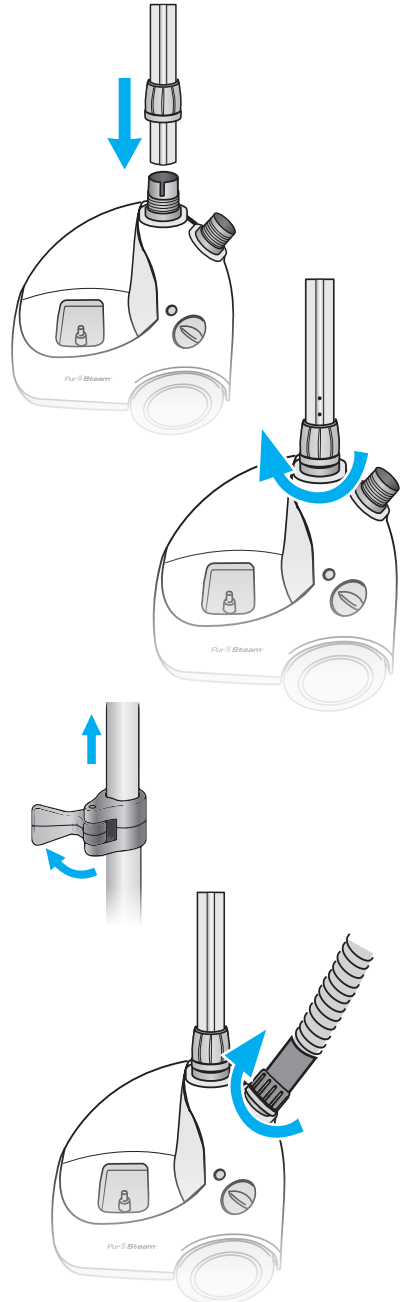


ASSEMBLY INSTRUCTIONS:

Place the base on the floor and remove the water tank.

Install the Telescopic pole

1. Unscrew the Pole Base lock from the Pole base and slide it up the pole.
2. Look inside the Pole base and locate two grooves on opposite sides. Locate matching grooves on both sides of the Telescopic pole.
3. Line the grooves from inside of the Pole base with the grooves on the Telescopic pole and push the Telescopic pole down into place.
4. Screw the Pole Base lock clockwise until tightened.
5. Fully extend the telescopic pole. To do so, loosen the clips on the pole by swinging their hinges outward, and then fully extend each section of the pole. To lock, close/tighten the clips. Perform this step with all three clips to extend the pole fully. Make sure the pole is securely locked in place.



Attach the Steam Hose

Align the Hose nut with the threaded Hose base and turn the Hose nut clockwise to tighten.

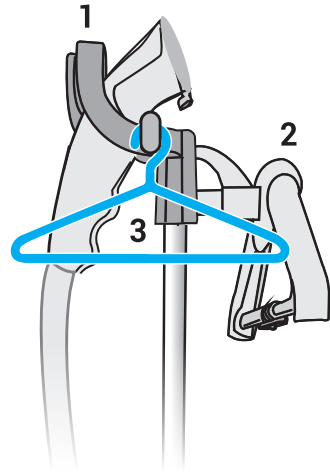
Ensure that threads on the hose line up correctly or leakage can occur.

Attach the Pole top

Attach the Pole top by sliding it down to the top of the Telescopic Pole.

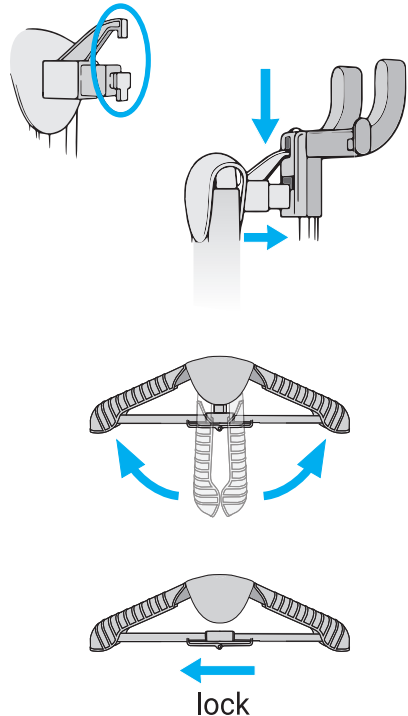
Functions of the pole top

1. **Steam Nozzle holder** provides a safe and convenient place to hang the Steam Nozzle when not in use.
2. **Hanger Anchor holes** serve as the connection point for attaching the included Hanger.
3. **Hanger hooks** on either side of the Pole top can hold your own rust-free hangers.

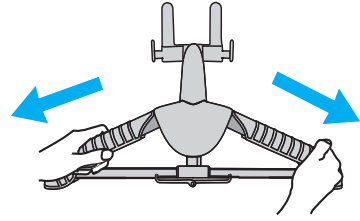


Attaching the included hanger

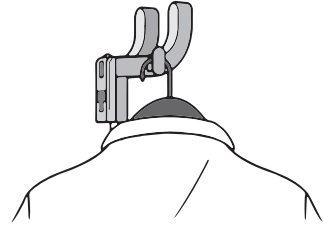
1. Locate brackets on the back of the included Hanger.
2. Align the Hanger with the Hanger Anchor Holes at approximately 45-degree angle. Insert the brackets into holes and then slide the Hanger down to lock it in place.
3. The Hanger is designed to support garments for easy, accessible steaming, and quickly collapses for convenient storage. To expand the Hanger, fold the two arms upward until the lower support arms line up straight. Slide the lock to secure arms in place. A garment may now be placed on the Hanger.



You can also expand the width of the arms of the Hanger, which allows you to adjust it to the clothing item you are steaming.



Note: You can also place the garment on a clean, rust-free clothes hanger. Place the hanger (with the garment) on one of the Clothes Hanger Hooks.



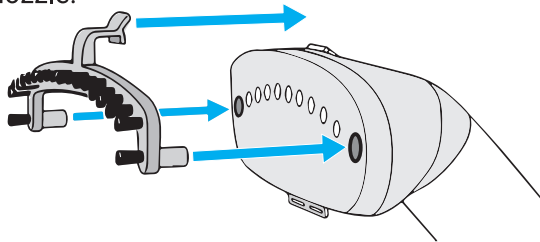
Attaching the Fabric Brush

The Fabric Brush is designed to brush away particles such as lint, hairs, and loose threads.

1. Make sure the unit is OFF and not emitting any steam before attaching the Fabric Brush.

CAUTION: Do not try to connect Fabric Brush while the unit is emitting steam, as this can cause burns and injury.

2. Press the Fabric Brush firmly onto Steam Nozzle. The two pegs will fit into the two larger holes on the face of the nozzle, while the latch fits over the top of the nozzle.



Remove the Fabric Brush once the unit is unplugged and completely cool by first releasing the latch from the top of the nozzle and then pulling off the rest of the brush.

Attaching the Pants Press

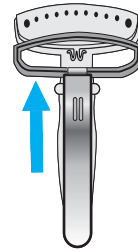
Pants Press attachment is designed to provide a more finished look, giving structure and creases to you dress shirts, collars, sleeves, plackets, hems, and pants.

1. Make sure the unit is OFF and not emitting any steam before attaching the Pants Press.

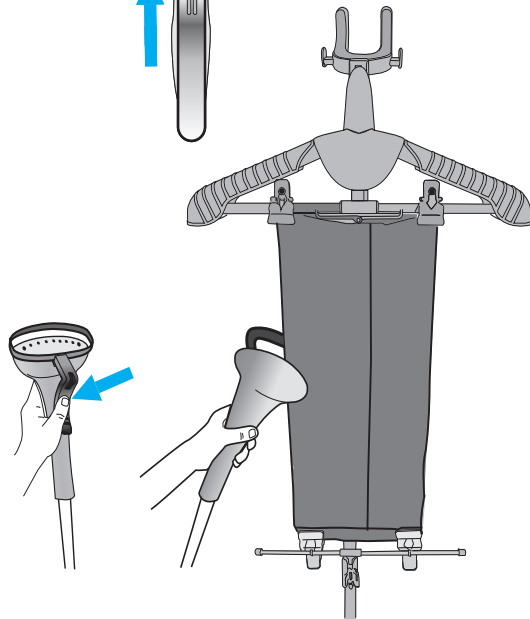


! CAUTION: Do not try to connect the Pants Press while the unit is emitting steam, as this can cause burns and injury.

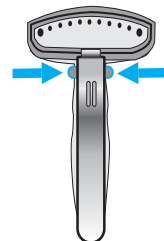
2. Connect the flute of the Pants Press to the pegs at the bottom of the Steam Nozzle. Push the Pants Press until it locks in place.



3. Push on the handle of the Pants Press to open it. Place the garment between the open Pants Press and the Steam Nozzle and then release the Pants Press handle. Move the Steam Nozzle in a downwards motion starting from the top to make pant creases easily or to remove stubborn wrinkles.

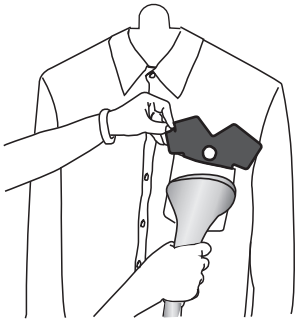


Remove the Pants Press by pressing the unlock buttons on each side and pulling the attachment off the Steam Nozzle.

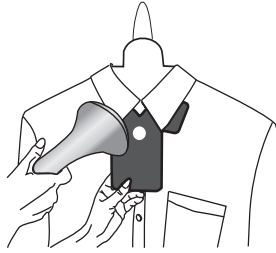


Using the Hand-Held Steaming Board

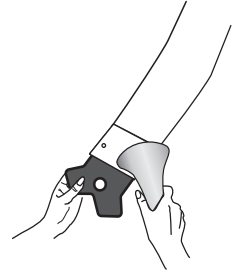
The "Y" shaped part is designed to help you steam pockets, sleeves, collars, or generally any corner of your garment.



For Pockets



For Collar

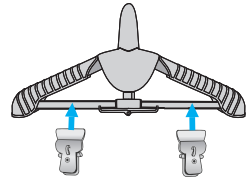


For Corners

Attaching and using the Clips

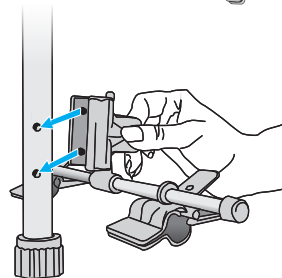
Garment Clips

Place the Garment Clips on the included Hanger.



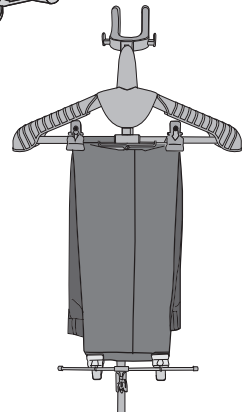
Lower bar with clips

Locate the pegs inside the middle clip, align them to the holes at the bottom of the Telescopic pole, and lock the part in place.



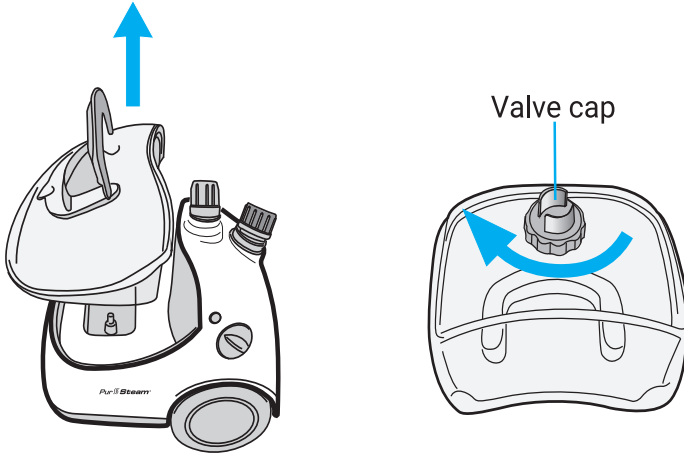
The Lower bar with clips and the Garment clips are designed to help hold fabrics such as children's clothing, pillowcases, or trousers in place.

To use, hang the garment from the Hanger Clips and secure with the clips on the Lower bar.



Filling the Water Tank

1. Unplug the Power Cord and turn the Power Switch to the "OFF" position.
2. Remove the Water Tank, turn it upside down, and unscrew the Valve Cap. Fill the Water Tank with cold water, and put back in place the Valve Cap. Do not use hot water.



Note: To prolong the lifetime of your steamer, we recommend using distilled or demineralized water.

3. Place the water tank back into the unit and make sure it is sitting correctly and securely in the Cavity / water reservoir.

Important: Do not let the steamer operate with an empty water tank or damage to the unit may occur.

Never use water that contains additives (starch, perfume, aromatic substances, softener, etc.) in the steamer. Additives such as these can affect the properties of the steam and lead to the formation of deposits.

USING YOUR STEAMER

1. Plug the unit into a proper outlet.
2. Turn on the Power Switch. Verify that the light on the switch is illuminated. Steam should start flowing from the Steam Nozzle in approximately 45 seconds.

Note: Expect gurgling sounds and possible water droplets with steam during the first minutes as the Hose heats up.

3. To steam a garment, place it on a clean, rust-free clothes hanger and place the hanger on the Hanger Hooks or use the included Hanger.
4. Grasp the Handle, and place the Steam Nozzle at the bottom of the garment. Steam will rise along the inside and outside of the fabric, removing wrinkles. Slowly slide the nozzle vertically, from the bottom to the top of the garment. Repeat this step until the fabric is wrinkle-free.
5. When you have finished with your steaming session, place the Power switch to the "OFF" position, and remove the plug from the outlet. Refer to the Cleaning and Storage section for proper cleaning and storage procedures.

! NOTE

- Do not allow kinks to form in the hose at any time as it will cause irregular steam flow, condensation and water droplets in the steam.

! CAUTION

- Always hang the Steam Nozzle on the Steam nozzle holder when not in use to prevent steam from causing bodily injury or damage to surfaces.
- The telescopic pole must be fully extended during steam operation to ensure the smooth lining of the hose and to provide a free flow of steam.
- Do not pull the hose with excessive force or damage will occur, causing steam leakage.
- Do not move the appliance by grasping the hose.
- Be careful when handling garments on the Hanger Hooks or the Hanger Anchor Holes. Pulling on the garment with too much force may cause the unit to tip.

TIPS FOR SUCCESSFUL STEAMING

- Test the garment on an unobtrusive area, such as an inner seam. We recommend checking the garment care label for manufacturer recommendations.
- For most effective results, hold the Steam Nozzle within ½ inches of fabrics, or press it directly against surfaces.
- Avoid contact between the Steam Nozzle and silk or velvet. Synthetic materials (such as 100% nylon or 100% polyester) are sensitive to heat and may be damaged by exposure to hot steam. Steam is recommended for use only on natural fibers such as cotton, linen, or wool, as well as nylon or polyester blends.
- Heavy fabrics may need to be steamed longer. To remove exceptionally stubborn wrinkles, steam both sides of the garment.
- Curtains and draperies can be steamed while still hanging.
- To sanitize fabrics, keep the Steam Nozzle in one place 1/2 inches from fabric for 5 seconds. Be careful not to get burnt from the hot steam.

CLEANING AND STORAGE

We recommend you follow this procedure after each use, but at least once per week:

1. Turn OFF the unit and unplug the power cord from the electrical outlet.
2. Allow the unit to cool (30 minutes for complete cooling).
3. Remove the Water Tank from the unit. Unscrew the Valve Cap and drain all remaining water from Water Tank.
4. Unscrew the Drain Plug and drain all remaining water from the Water Reservoir to prevent overfilling during your next use. Securely reattach the Drain Plug and place the empty Water Tank back onto the Base.
5. For storage convenience, you may wish to collapse the Telescopic Pole to its most compact height.
6. Hang the Steam Nozzle in an upright position on the Steam Nozzle Holder when not in use.
7. Loosely bundle the power cord and store the unit in a cool, dry location.

REMOVING MINERAL BUILD-UP

To maintain maximum performance, you must descale your steamer occasionally. This is a standard maintenance needed for steam appliances to remove build-up caused by high mineral content in many municipal water supplies. Mineral residue inside of the internal pipes and heater can cause intermittent steaming or, in some cases, no steaming at all. Depending on the water quality in different regions, we advise you to remove the mineral build-up after 7-15 days of use. The procedure below can be used to reduce mineral build-up. If you are able to use demineralized or distilled water, we recommend you follow this procedure once a month.

1. Turn OFF the unit and unplug the power cord from the electrical outlet.
2. Allow the unit to cool (30 minutes for complete cooling).
3. Remove the Water Tank from the unit. Unscrew the Valve Cap and drain all remaining water from Water Tank.
4. Unscrew the Drain Plug and drain all remaining water from the Water Reservoir. Securely reattach the Drain Plug.
5. Mix a solution of 50% vinegar and 50% water. In most cases, 2 cups of this solution will be sufficient.
6. Slowly pour the water-vinegar solution into the Hose Base.
7. Allow the solution to sit for 40 minutes.
8. Drain the solution out of the Water Reservoir by unscrewing the Drain plug and allowing the liquid to drain into a sink or a tub.
9. Drain the remaining solution out of the Hose Connector by tilting the unit over a sink or a tub allowing the liquid to drain out.
10. Pour clean water in the Hose Connector and drain. Repeat this step until the vinegar odor dissipates.
11. Reassemble the unit and operate normally.

TROUBLESHOOTING

PROBLEM	POSSIBLE CAUSE	SOLUTION
Unit fails to heat up. Indicator lamp DOES NOT illuminate when the unit is turned ON.	Unit is not plugged in.	Plug the power cord into an electrical outlet.
	Household circuit breaker/ ground fault interrupter has tripped or blown a fuse.	Reset circuit breaker/ground fault interrupter, or replace the fuse. For assistance, contact a licensed electrician.
	Unit is damaged or otherwise in need of repair.	Immediately cease usage and unplug. Contact Customer Service for assistance (see below for details).
Unit fails to heat up. Indicator lamp DOES illuminate when the unit is turned ON. <i>NOTE: Always allow sufficient time for the unit to heat up and begin producing steam.</i>	No water in unit.	Refer to Filling the Water Tank procedure on Page 9 to fill unit with water.
	Mineral build-up in unit.	Refer to the Cleaning and Storage section on Page 11 for details.
	Unit is damaged or otherwise in need of repair.	Immediately cease usage and unplug. Contact Customer Service for assistance (see below for details).
Excessive gurgling in Hose and Steam Nozzle/water drips from Steam Nozzle.	Condensation build-up inside of Steam Nozzle/ Hose.	Some gurgling is a natural effect of the steaming process. For excessive gurgling or dripping water, point the Steam Nozzle downward and shake thoroughly to remove excess water droplets.
	Mineral build-up in unit.	Refer to the Cleaning and Storage section on Page 11 for details.

PROBLEM	POSSIBLE CAUSE	SOLUTION
Steam output is weak or intermittent.	Water level in Water Reservoir is running low.	Refer to Filling the Water Tank procedure on Page 9 to fill unit with water.
	Mineral build-up in unit.	Refer to the Cleaning and Storage section on Page 11 for details.

PROFESSIONAL GARMENT STEAMER PS-910

PRODUCT SPECIFICATION:

Water Tank Capacity: 1.8L
 Steam Output Time: 45 seconds
 Input Voltage: 110-120V-60Hz
 Output Power: 1260-1500W





1-Year Limited Warranty

This product is warranted to be free from defects in material and workmanship under normal use and service for one year from the date of the original purchase with the receipt. The manufacturer's obligation shall be limited to repairing or replacing any part of the product that is defective. Such warranty shall not apply to damages resulting from accidents, abuse, or misuse.



Your purchase comes with a 100% satisfaction guarantee from PurSteam

If you are not happy with the product for any reason, please contact us at support@pursteam.us or (855) 530-6800 with your feedback or questions, and we will do our best to make things right for you!

Pur  Steam
World's Best Steamers

🏠 37 East 18th, Floor 7, New York,
NY 10003

☎ Telephone: (855) 530-6800

✉ E-mail: support@pursteam.us

🌐 Web: www.pursteam.us

Specifications subject
to change without notice