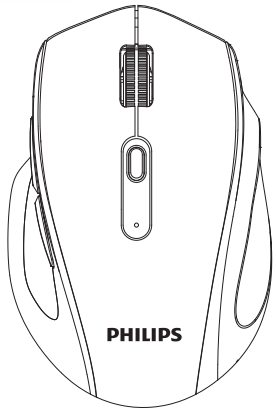


PHILIPS

Mouse

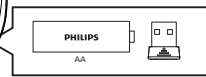
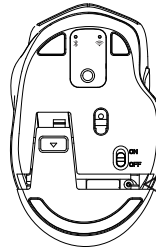
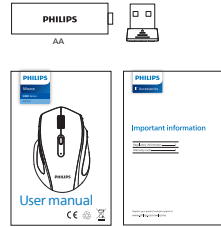
5000 Series

SPK7547

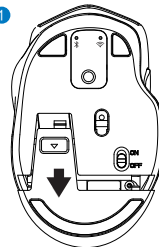


User manual

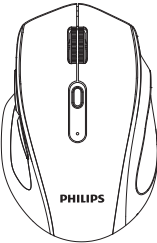
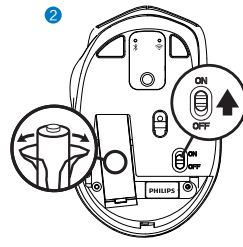
Register your product and get support at www.philips.com/welcome



1



2



1



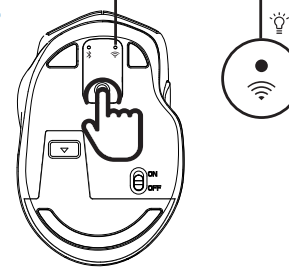
2



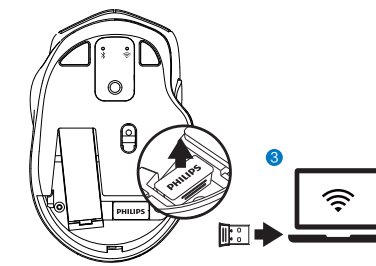
1

2.4GHz

1



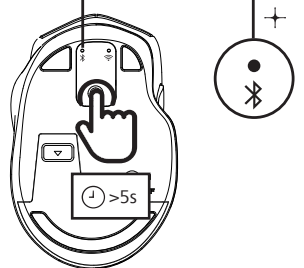
2



2

Bluetooth®

1



2



Bluetooth 3.0



Bluetooth 5.2



www.philips.com/support



FAQ



User Manual



Important Information



User manual | English

Technical specifications

Wireless technology: 2.4GHz / Bluetooth 3.0 / Bluetooth 5.2
Wireless effective distance: about 15m(2.4GHz) / 10m(Bluetooth)
Number of buttons: 7
Mouse buttons lifetimes: 3 million keystrokes
Resolution: 800/1600/2400/3200/4000 DPI
Power supply: 1*AA Philips battery
Inter face: USB wireless receiver
Product dimension: 108.3x71x40.1mm
Product weight: 72±5g
Operating temperature range: 0°C to 40°C
Operating humidity range: 10% - 85%.

System requirement

- 1.*USB port
2. Bluetooth
- 3.Microsoft Windows 7, Windows 8, Windows 10 or later;
Android 3.2 and above; Mac OS 10.5 and above;

คำแนะนำการใช้งาน | ภาษาไทย

รายละเอียดทางเทคนิค

การเชื่อมต่อ: 2.4GHz / บลูทูธ 3.0 / บลูทูธ 5.2
ระยะทางการเชื่อมต่อแบบไร้สาย: ประมาณ 15 ม.(2.4GHz) / 10 ม.(บลูทูธ)
จำนวนปุ่ม: 7
อายุการใช้งานปุ่มกด: 3 ล้านครั้ง
ความละเอียด: 800/1600/2400/3200/4000 DPI
แหล่งจ่ายไฟ: ถ่านไฟฉายชนิด AA*1
อินเตอร์เฟซ: ตัวรับสัญญาณไร้สาย USB
ขนาดผลิตภัณฑ์: 108.3x71x40.1mm
น้ำหนักผลิตภัณฑ์: 72±5 กรัม
ช่วงอุณหภูมิในการใช้งาน: 0°C ถึง 40°C
ช่วงความชื้นในการใช้งาน: 10% - 85%

ความต้องการของระบบ

- 1.พอร์ท USB*1
2. บลูทูธ
- 3.Microsoft Windows 7, Windows 8, Windows 10 หรือสูงกว่านั้น;
Android 3.2 และสูงกว่านั้น; Mac OS 10.5 และสูงกว่านั้น;

Manual del usuario | En español

Especificaciones técnicas

Conectividad: 2.4 GHz / Bluetooth 3.0 / Bluetooth 5.2
Distancia efectiva inalámbrica: 15 m (2.4 GHz) / 10 m (Bluetooth)
Número de botones: 7
Vida útil de los botones del ratón: 3 millones de pulsaciones
Resolución: 800/1600/2400/3200/4000 DPI
Fuente de alimentación: 1 batería AA Philips
Interfaz: Receptor inalámbrico USB
Dimensiones del producto: 108.3x71x40.1 mm
Peso del producto: 72±5 g
Rango de temperatura de funcionamiento: 0 °C a 40 °C
Rango de humedad de funcionamiento: 10 % - 85 %.

Requisitos del sistema

- 1.*USB port
2. Bluetooth
- 3.Microsoft Windows 7, Windows 8, Windows 10 o posterior;
Android 3.2 y posterior; Mac OS 10.5 y posterior;

Kullanma Kılavuzu | Türkçe

Teknik özellikler

Bağlantı özellikleri: 2.4GHz / Bluetooth 3.0 / Bluetooth 5.2
Etkili Kablosuz bağlantı mesafesi: 15m (2.4GHz) / 10m (Bluetooth)
Düğme sayısı: 7
Fare düğmelerinin kullanım ömrü: 3 milyon tuş vuruşu
Çözünürlük: 800/1600/2400/3200/4000 DPI
Güç beslemesi: 1*AA Philips pil
Arayüz: USB kablosuz alıcı
Ürün boyutları: 108.3x71x40.1mm
Ürün ağırlığı: 72±5g
Çalışma sıcaklığı aralığı: 0°C ila 40°C
Çalışma nem aralığı: %10 - %85.

Sistem gereklilikleri

- 1.*USB bağlantı noktası
2. Bluetooth
- 3.Microsoft Windows 7, Windows 8, Windows 10 veya üzeri;
Android 3.2 ve üzeri; Mac OS 10.5 ve üzeri;

دليل المستخدم | اللغة العربية

المواصفات الفنية

الاتصال: 2.4 جيجا هرتز / بلوتوث 3.0 / بلوتوث 5.2
المسافة الفعالة اللاسلكية: 15 م (2.4 جيجا هرتز) / 10 م (بلوتوث)
عدد الأزرار: 7
عمر استخدام أزرار الماوس: 3 ملايين غمسة مفتاح
الدقة: 800/1600/2400/3200/4000 نقطة لكل بوصة حثية
مصدر الطاقة: * 1 بطارية فيليبس AA
جهاز التوافق: يو آس بي لاسلكي
أبعاد المنتج: 108.3x71x40.1 ملم
وزن المنتج: 72 جرام
نطاق درجة حرارة التشغيل: من 0 درجة مئوية إلى 40 درجة مئوية
نطاق رطوبة التشغيل: 10% - 85%.

متطلبات النظام

- 1 * منفذ يو آس بي

Mac مايكروسوفت ويندوز 7، ويندوز 8، ويندوز 10 أو الأحدث، أندرويد 3.2 وما فوق، نظام التشغيل
وما فوق، Mac OS 10.5

2025 © Top Victory Investments Limited . All rights reserved.

Philips and the Philips Shield Emblem are registered trademarks of Koninklijke Philips N.V. and are used under license.

This product has been manufactured by and is sold under the responsibility of Top Victory Investments Limited , and Top Victory Investments Limited is the warrantor in relation to this product.

Specifications are subject to change without notice



The **Bluetooth** word mark and logos are registered trademarks owned by Bluetooth SIG, Inc. and any use of such marks by MMD Hong Kong Holding Limited is under license. Other trademarks and trade names are those of their respective owners.

Made in China

Register your product and get support at:
www.philips.com/welcome



FCC Warning Statement:

This equipment has been tested and found to comply with the limits for a Class B digital device, pursuant to part 15 of the FCC Rules. These limits are designed to provide reasonable protection against harmful interference in a residential installation. This equipment generates, uses and can radiate radio frequency energy and, if not installed and used in accordance with the instructions, may cause harmful interference to radio communications. However, there is no guarantee that interference will not occur in a particular installation. If this equipment does cause harmful interference to radio or television reception, which can be determined by turning the equipment off and on, the user is encouraged to try to correct the interference by one or more of the following measures:

- Reorient or relocate the receiving antenna.
- Increase the separation between the equipment and receiver.
- Connect the equipment into an outlet on a circuit different from that to which the receiver is connected.
- Consult the dealer or an experienced radio/TV technician for help.

Caution: Any changes or modifications to this device not explicitly approved by manufacturer could void your authority to operate this equipment.

This device complies with part 15 of the FCC Rules. Operation is subject to the following two conditions: (1) This device may not cause harmful interference, and (2) this device must accept any interference received, including interference that may cause undesired operation.

The device has been evaluated to meet general RF exposure requirement.