



Multi-Connction Foldable Backlit Bluetooth Keyboard

IC-BK05

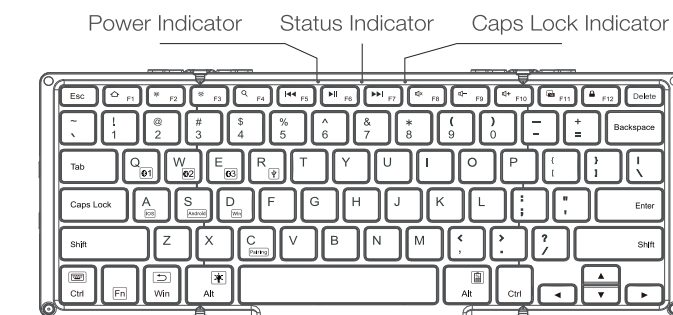
User Manual

Thank you very much for purchasing this keyboard, please read this user manual carefully before use.

Package Contents

- 1 x Wireless Keyboard
- 1 x Micro USB Cable
- 1 x Carry Bag
- 1 x Stand Holder
- 1 x User Manual

Indicator Lights Description



- Power Indicator:**
Unfold the keyboard to power on, and the indicator will be on for 3s. Stay in red while charging. Press fn+ right "Alt" key to check the power status. Each flash represents 25% battery.
- Status Indicator:**
Press fn + C keys to Bluetooth pairing mode.
- Caps Lock Indicator:**
Press the caps lock key to switch between uppercase and lowercase. Note: the indicator will not be on for Android devices.

-1-

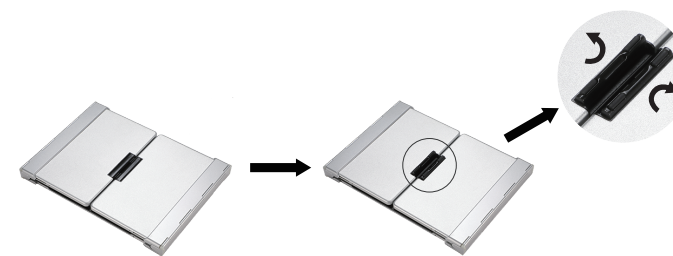
Specifications

Bluetooth Version	Bluetooth 5.1
Operating Range	Up to 10m
Modulation System	GFSK
Lithium Battery Capacity	750mAh
Working Time with Backlit	> 5h
Working Time without Backlit	300h
Stand-by Time	90 days
Charging Time	< 4h
Lithium Battery Life	3 years
Key Life	3 million clicks
Unfolding Dimensions	291 x 117 x 8.25 mm
Folding Dimensions	166 x 120 x 14.8 mm
Front Side Material	ABS
Back Side Material	Aluminium alloy

*Frequency band: 2402 MHz ~ 2480 MHz
*Maximum transmission power: 0 dBm

Balance Stand

Open the balance stand to keep the balance when typing.



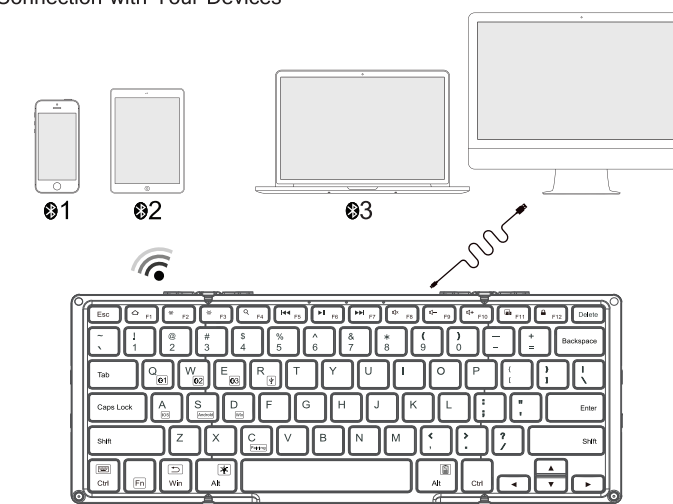
-2-

Backlit

Press "Fn + [L]" key to turn on/off backlit function
1st time press to turn on backlit
2nd time press to increase backlit brightness
3rd time press to turn off backlit.
Press "Fn + [L]+[R]" or "Fn + [L]+[R]" keys to change backlit colors.

Operation Instruction

Connection with Your Devices



-3-

Pairing Guide

a. USB Wired Connection

How to pair with USB wired devices connection?
Step 1. Unfold the keyboard to power it on; power indicator will be green for 3s, then off.
Step 2. Plug the provided Micro USB cable to connect your PC/laptop and IC-BK05 keyboard.
Step 3. Press "Fn" + "R" keys meantime to enter wired connection mode.
Step 4. The status indicator will be green after successfully paired.

b. Wireless Connection

How to pair with wireless devices?

Pairing with the 1st device

Step 1. Unfold the keyboard to power it on; power indicator will be green for 3s, then off.
Step 2. Press "Fn"+"Q" keys to enter channel 1.
Step 3. Press "Fn"+"C" keys meantime to enter pairing mode; status indicator will flash blue, starting to search the available bluetooth device.
Step 4. Find the Bluetooth name "iClever IC-BK05 Keyboard" and click to connect it.
Step 5. The status indicator will be off after successfully paired.

Pairing with the 2nd device

Step 1. Press "Fn"+"W" keys meantime to enter channel 2.
Step 2. Press "Fn"+"C" keys meantime to enter pairing mode; status indicator will flash blue, starting to search the available bluetooth device.
Step 3. Find the Bluetooth name "iClever IC-BK05 Keyboard" and click to connect it.
Step 4. The status indicator will be off after successfully paired.

Pairing with the 3rd device

Step 1. Press "Fn"+"E" keys meantime to enter channel 3.
Step 2. Press "Fn"+"C" keys meantime to enter pairing mode; status indicator will flash blue, starting to search the available bluetooth device.
Step 3. Find the Bluetooth name "iClever IC-BK05 Keyboard" and click to connect it.
Step 4. The status indicator will be off after successfully paired.

-4-

If fail to connect, please try as below:

Step 1. Delete the connection records with iClever keyboard.
For example, for iPad, click "Settings" > "Bluetooth" > under "MY DEVICE" to delete the iClever keyboard connection record.
Step 2. Turn off the Bluetooth and turn it on again to Refresh.
For example, for iPad, click "Settings" > "Bluetooth" > if the on-screen switch beside Bluetooth currently show as ON, tap it twice to refresh it.
Step 3. Connect it again.

Notes:

Auto re-connect function: when you turn on the keyboard, it will connect with the last-used device automatically.

c. How to switch among connected devices?

Press fn + Q/W/E/R key to switch among the connected devices.

d. How to re-pair bluetooth connected channel.

Step 1. Press fn + Q/W/E keys to choose the Bluetooth Channel.
Step 2. Press fn + C keys to Bluetooth pairing mode again.

System Requirement

- ▶ iOS 6.0 and above
 - ▶ Mac OS X 10.6 to Mac OS X 10.12 and above
 - ▶ Windows 8 /10, PC computer with a Bluetooth host
 - ▶ Android 6.0 and above with Bluetooth HID profile (Smartphones and Tablets)
- NOTE: This keyboard is not fully compatible with Samsung Smart TV, Bluetooth Adapter, Mac mini and Nokia phones.**

-5-

Keys and Function

The table below describes special key combinations for different operating systems. Press fn + A/S/D to choose right system.

Key icon	iOS [Press (F1-F12) keys directly]	Android [Press (F1-F12) keys directly]	Windows [Press (F1-F12) keys directly]	Windows 10 [Press Fn + (F1-F12) keys]
Esc	N/A	Back	Esc	N/A
F1	Home	Home	F1	Web browser
F2	Brightness down	Brightness down	F2	Brightness down
F3	Brightness up	Brightness up	F3	Brightness up
F4	Search for	Search for	F4	Search for
F5	Previous track	Previous track	F5	Previous track
F6	Play/pause	Play/pause	F6	Play/pause
F7	Next track	Next track	F7	Next track
F8	Mute	Mute	F8	Mute
F9	Volume -	Volume -	F9	Volume -
F10	Volume +	Volume +	F10	Volume +
F11	Screen shot	Screen shot	F11	Screen shot
F12	Lock screen	Lock screen/NA	F12	Lock screen
Keyboard Display	N/A	N/A	N/A	N/A
Win	N/A	Back	N/A	N/A

-6-

Important

As this is a multilingual keyboard, set the language of the device to your desired language before use.

- For iOS devices only:
Settings > General > Keyboard > Keyboards > Add new keyboard > Select desired language
- For Samsung Android devices only:
Settings > Controls > Language and input > Samsung Keyboard > Select input languages > Select desired language
- For Android devices only:
Settings > Language & input > Physical Keyboard > Set up keyboard layouts > Select desired language
- For Windows devices only:
Control Panel > Clock, Language and Region > Select desired language

Power Saving Mode

The keyboard will enter sleep mode after 30 minutes of inactivity. To activate it, press any key and wait for 3 seconds.

Note: The first 3 seconds after the keyboard wakes up, there may be a delay in typing.

How to Charge it

- ▶ Charge the device with the included USB cable. Connect one end of the charging cable to a USB charger, and the other end to the charging port of the keyboard (Output: DC 5V/200mA; **USB charger is not included.**)
- ▶ In the charging process, the charging indicator will glow red. Generally, it takes about 2 hours to get it fully charged.

-7-

FAQ

Q: Keyboard can not connect with my Bluetooth devices.

Possible solutions:

- Make sure the device you are ready to pair is Bluetooth-enabled.
- Restart the keyboard and your devices.
- Charge the keyboard for 30 minutes.
- On your device, delete the connection records with iClever keyboard.
- On your device, turn off the Bluetooth and turn it on again to refresh.
- Make sure that your iClever device and computer are within close proximity of each other.
- Try to connect it again as the "Pairing Instruction" introduce.

Q: Keys are laggy or or responding intermittently when typing.

Possible solutions:

- Make sure that your iClever device and computer are within close proximity of each other.
- Try moving away from metal and other sources of wireless signal. Try moving away from:
-- Any device that could emit wireless waves: Microwave, cordless phone, baby monitor, wireless speaker, garage door opener, WiFi router
-- Computer power supplies, Strong WiFi signals
- Charge the keyboard for 30 minutes. Low battery power can adversely affect connectivity and overall functionality.
- Do not run too many apps simultaneously.
- Make sure your operating system (OS) is up to date.
- Try on a different computer/smartphone/tablet.

Q: How to Fix Keyboard Typing Multiple Letters on Mac.

- On a Mac, choose the Apple menu > "System Preferences", click "Keyboard", and choose the Keyboard tab.
- Locate the "Key Repeat" slider setting and adjust it to the "Off" position.

Q: How to Fix Keyboard Typing Multiple Letters on Windows 10.

Turn on the Filter Keys:
Click win key→Settings→Ease of Access→Keyboard→ find "Use Filter Keys", turn it on.

-8-

Safety Instructions

- Keep the keyboard away from sharp objects that could damage it.
- Do not put heavy objects on the keyboard.
- To clean the keyboard, gently wipe it by using a moist cotton cloth.
- Please do not spill coffee, tea or other liquids on the keyboard.

FCC Statement

Changes or modifications not expressly approved by the party responsible for compliance could void the user's authority to operate the equipment. This equipment has been tested and found to comply with the limits for a Class B digital device, pursuant to Part 15 of the FCC Rules. These limits are designed to provide reasonable protection against harmful interference in a residential installation. This equipment generates, uses and can radiate radio frequency energy and, if not installed and used in accordance with the instructions, may cause harmful interference to radio communications. However, there is no guarantee that interference will not occur in a particular installation. If this equipment does cause harmful interference to radio or television reception, which can be determined by turning the equipment off and on, the user is encouraged to try to correct the interference by one or more of the following measures:
-- Reorient or relocate the receiving antenna.
-- Increase the separation between the equipment and receiver.
-- Connect the equipment into an outlet on a circuit different from that to which the receiver is connected.
-- Consult the dealer or an experienced radio/TV technician for help.

This device complies with Part 15 of the FCC Rules. Operation is subject to the following two conditions:
(1) this device may not cause harmful interference, and (2) this device must accept any interference received, including interference that may cause undesired operation.

Contact

Email: support@iclever.com

-9-

