

PYLE 5.25" Marine Component Speakers



PLMR52

User Manual

Features:

- Includes (2) 5.25" Component Speakers
- Marine Grade Weather Resistant Construction
- Full Range Stereo Sound Reproduction
- 2-Way Dual Cone Speakers
- Poly Carbon Cone, Cloth Surround
- Molded ABS Machined Basket and Grill
- For Marine, Automobile & Off-Road Vehicles
- Universal Standard OEM Replacement Size
- Includes Speaker Wire & Mounting Hardware

Visit Our Website



SCAN ME
PyleUSA.com

Technical Specs:

- MAX Power: 150 Watt
- RMS Power: 75 Watt
- 4 Ohm Impedance
- Sensitivity: 88dB
- 15 oz. Circuit Magnet
- Voice Coil: 1.0", Aluminum
- Tweeters: 0.5", Polymer Dome
- Frequency Response: 100Hz-20kHz
- Speaker Total Diameter: 5.79"
- Speaker Cut-Out Diameter: 4.49"
- Speaker Mounting Depth: 2.12"



California Prop 65 Warning

WARNING:

This product may expose you to chemicals, which is known to the state of California to cause cancer, birth defects and other reproductive harm. Do not ingest.

For more info go to: www.P65warnings.ca.gov



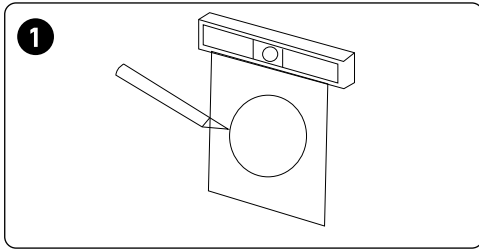
Questions? Comments?

We are here to help!

Phone: (1) 718-535-1800

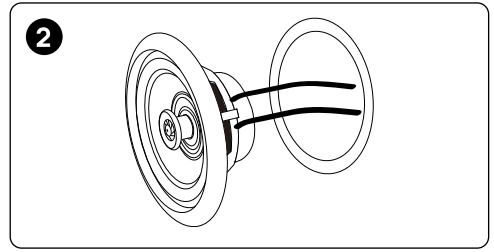
PyleUSA.com/ContactUs

Installation

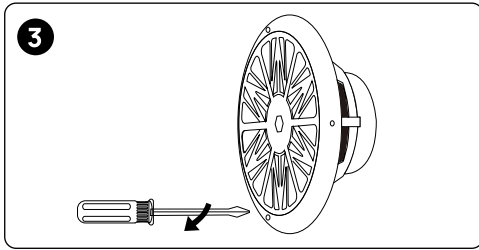


1. Cut the drywall.

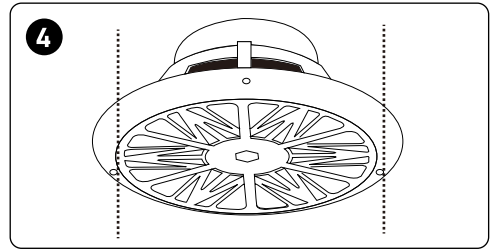
Note: Always allow at least one-half inch between a wall stud and the speaker cutout. Otherwise, the locking tabs will not be able to swivel into place.



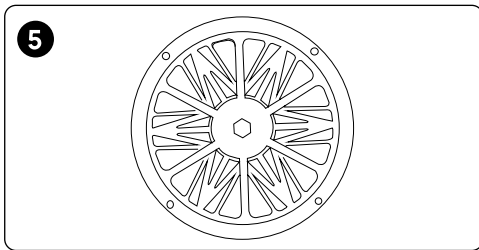
2. Connect the speaker wires to the speaker.



3. Screw down each of the four Phillips-head screws. The locking tabs will swivel into place and secure the unit to the rear surface of the drywall. Apply the adhesive strips to secure the grille.



4. Replace the metal grille.



Installation Complete

Register Product

Thank you for choosing PyleUSA. By registering your product, you ensure that you receive the full benefits of our exclusive warranty and personalized customer support. Complete the form to access expert support and to keep your PyleUSA purchase in perfect condition.

Start Here



Model Number:

PLMR52

[PyleUSA.com/pages/register](https://www.pyleusa.com/pages/register)

Get Into It!