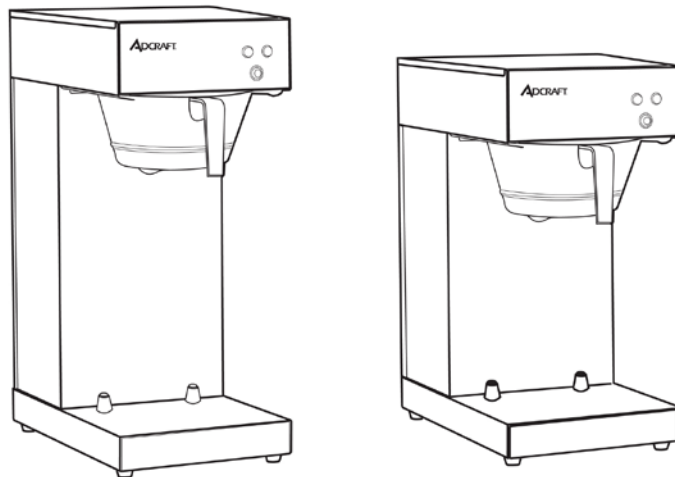


ADCRAFT®



UB-286, UB-289 Coffee Brewer

This manual contains important information regarding your *Admiral Craft* unit. Please read this manual thoroughly prior to equipment set-up, operation and maintenance. Failure to comply with regular maintenance guidelines outlined in this manual may void the warranty.

MUST READ!!!

Warnings:

- Do not touch any hot surfaces
- Do not plug or unplug unit with wet hands
- Do not immerse unit, cord or plug in liquid at any time
- Unplug cord from outlet when not in use and before cleaning
- Do not operate unattended
- Do not use this unit for anything other than intended use
- Never pour Hot Water, Coffee, or Coffee Powder into the Water Reservoir.
- Never pour more than 2.2 liter of water into the Water Reservoir
- Do not use outdoors
- Always use on a firm, dry and level surface at least 12" from walls or any other obstruction
- Do not use if unit has a damaged cord or plug, in the event the appliance malfunctions, or has been damaged in any manner
- Keep children and animals away from unit
- Any incorrect installation, alterations, adjustments and/or improper maintenance can lead to property loss and injury. All repairs should be done by authorized professionals only
- Ensure that the designated power supply is adequate for continual usage and the voltage is correct

Installation:

***Note** - Please check that your Brew Cone is assembled correctly, with the spring wedged firmly at the bottom of the Filter Basket.

1. Place the Machine on a firm and horizontal surface with plenty of room above to allow easy and safe filling of the water tank.
2. Plume UB series to water connection. A quality water filter is recommended.
Water line must have water pressure of between 20 and 90PSI.
3. Plug machine into power.
4. Place an empty pot at correct position under the Filter Basket.
5. Turn the power switch ON. Press the brew button and the "Filling" indicator will light up and off when reservoir is full. The "Heating" indicator will light up continued.
6. **HOT WATER** should start to flow into pot in approximately 90 seconds.
7. About 4~5 minutes later, the "Heating" Indicator will off indicating the brewing process has ended. Do not remove vessel or Brew Cone until water stops flowing.
8. You should repeat the above process twice to clean the internal parts of the machine before brewing coffee for first time.
9. During above operation, it is normal to hear some brewing and pumping sounds and to see some water vapor coming out of the machine.

***NOTE** - If operated incorrectly or water over flows, please **TURN-OFF** the power switch immediately to **STOP** the brewing procedure.



Operation

1. Remove the Filter Basket, and place a Filter Paper into the Filter Basket. Put appropriate amount of coffee in the Filter Paper (your coffee supplier should be able to provide you with information about correct yields).
2. Slide the Filter Basket into position.
3. Place the empty decanter (Pot or Airpot) at the correct position under Filter Basket.
4. Turn the power switch ON. Press the Brew button; the "Filling" & "Heating" indicator will light.
5. Coffee will start to flow into the pot in approximately 90 seconds.
6. When the "**Heating**" indicator light turns off, the brewing cycle has completed. Do not remove vessel or Filter Basket away until coffee stops flowing.
7. Brew cycle is completed.
8. Dispose of used grounds coffee and filter paper; rinse Filter Basket in clean water.

*Note -

- The tank must be full of water before connecting the brewer to electrical power.
- Water will always remain in the hoses and boiler of the unit. If the brewer should be moved or removed for service, be sure to pour out the remaining water. Failure to comply can cause serious burns.
- To avoid splashing or overflowing hot liquids, always place an empty airpot or server under the filter pan before starting the brew cycle. Failure to comply can cause serious burns

CLEANING – NOTE: To maintain cleanliness and increase service life, the brewer should be cleaned daily. Do not immerse the unit in water or any other liquid. If liquid enters the electrical compartment it may cause a short circuit or electrical shock.

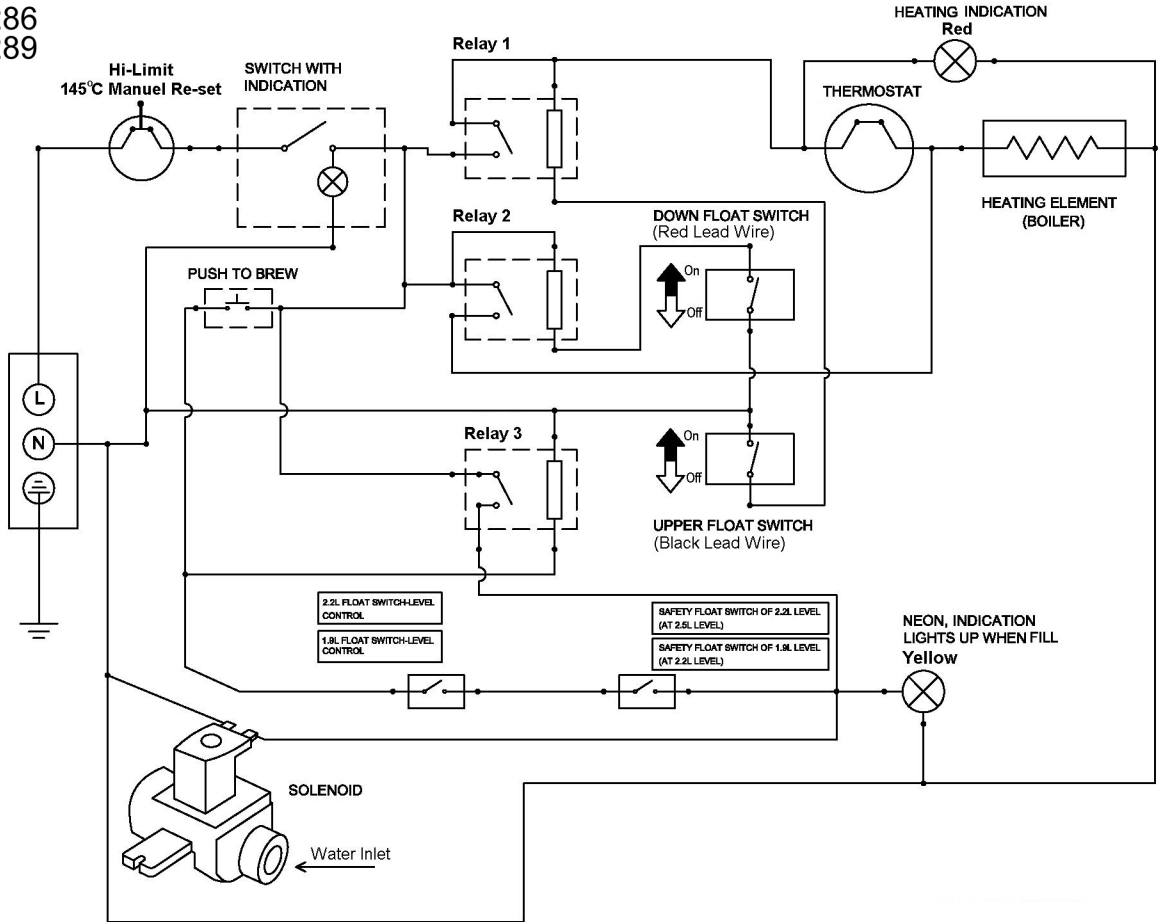
1. Allow unit to completely cool before cleaning.
2. Disconnect the cord from the outlet.
3. The Coffee Maker must not be cleaned by a water jet.
4. Wipe the outside of the unit with a damp cloth, then wipe dry.
5. To avoid damage, do not use abrasive cleaners or scouring pads.
6. If soap or chemical cleaners are used, be sure they are completely rinsed away with clear water immediately after cleaning. Chemical residue could damage or corrode the surfaces of the unit.

De-sediments

On areas in the water boiler, hard water will cause calcium and limestone to accumulate when the machine is used. To keep the Machine in the best operating condition and ensure each coffee brewing resulted in the best taste, we recommend that of the Machine has successively brewed at least 200 times or used for 6 months.

1. Add 300 ml fresh lemon juice or condensed lemon juice to 1 liter of water.
2. Place filter basket in proper position.
3. Place an empty pot at the correct position under the filter basket.
4. Pour the lemon juice solution into the Water Reservoir.
5. Turn the power switch ON and Push the "Brew Button" once.
6. Some of hot water will drop into the jug, until the solution of lemon juice push out the water remained inside of the Machine and there are some solutions of lemon juice start to drop into the jug, than turn the Switch OFF.
7. Wait for 5~6 minutes to enable the rest of solution to run through with sediments, then turn the Switch ON and Push the "Brew Button" once again for the unit to complete the brew cycle.
8. When solution of lemon juice is no longer dripping out, set switch OFF and flush the solution away.
9. Since some solution of lemon juice will remain in the Machine, we must run brewing cycles several times with water only until there is no more taste and smell of lemon juice in the hot water that flow out from the Machine.

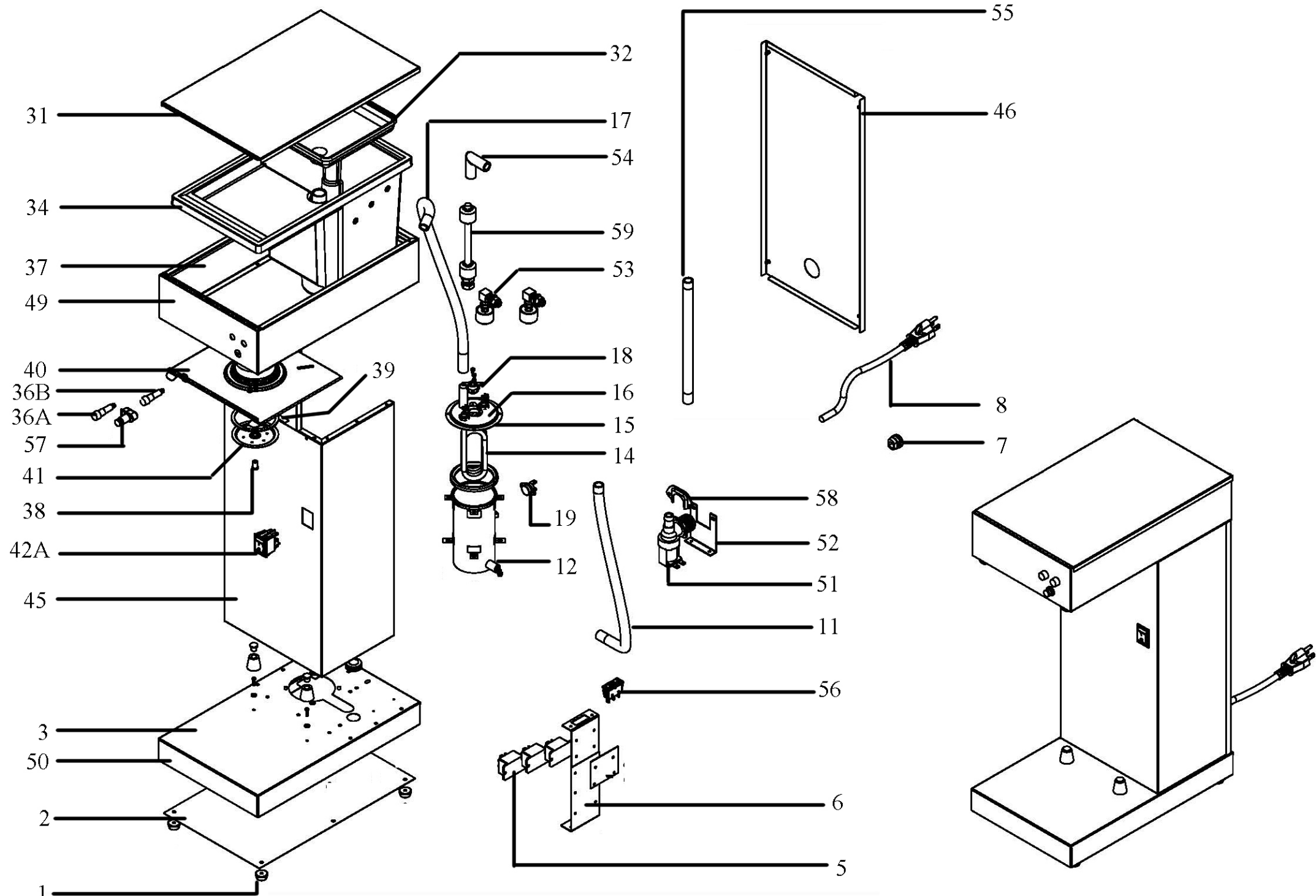
UB-286
UB-289



VER0812

Wiring Diagram

UB-286 & 289



Coffee Brewer - UB-286, UB-289

Reference Number	Description
1	Foot
2	Bottom Cover
3	Base Frame
5	Relay
6	Relay Holder
7	Wire Clip
8	Power Cord and Plug
11	Inflow Pipe
12	Boiler Tank
14	Main Heater
15	Boiler Gasket
16	Boiler Tank Lid
17	Outflow Pipe
18	Auto Thermostat
19	Manual Thermostat
31	Upper Cover
32	Waterproof Panel
34	Water Reservoir
35	Filling Indicator - Orange
36	Heating Indicator - Red
37	Upper Frame
38	Sprinkler Screw
39	Sprinkler Gasket
40	Sprinkler Holder
41	Sprinkler
42	Power Switch Single
45	Body Frame
46	Rear Cover
49	Upper Panel
50	Lower Panel
51	Solenoid Valve
52	Solenoid Fixer
53	Level Switch
54	Elbow in Tank
55	Inflow Pipe
56	Function Switch
57	Push Switch
58	Solenoid Valve Holder
59	Double Float Switch

VER811

ACE Equipment One Year Limited Warranty

Admiral Craft Equipment Corp. (ACE) warrants its equipment against defects in materials and workmanship, subject to the following conditions:

ACE Equipment is warranted for one year, effective from the date of purchase by the original owner. A copy of the original receipt or other proof of purchase is required to obtain warranty coverage. This warranty applies to the original owner only, and is not assignable.

Should any product fail to function in its intended manner under normal use within the limits defined in this warranty, at ACE's discretion, such product will be repaired, replaced with a refurbished unit, or replaced with a new unit by ACE, after defective unit has been inspected and defect has been confirmed. ACE does not assume any liability for extended delays in replacing any item beyond its control. This warranty does not apply to rubber and non-metallic synthetic parts that may need to be replaced due to normal usage, wear or lack of preventative maintenance.

This warranty covers products shipped into the 48 contiguous United States, Hawaii, and metropolitan areas of Alaska and Canada. Warranty coverage on products used outside the 48 contiguous United States, Hawaii and metropolitan areas of Alaska and Canada may vary. Contact ACE for details at 1-800-223-7750

The following conditions are not covered by warranty:

- Equipment failure relating to improper installation, improper utility connection or supply and problems due to improper ventilation.
- Equipment that has not properly been maintained, damage from improper cleaning, and water damage to controls.
- Equipment that has not been used in an appropriate manner, or has been subject to misuse, neglect, abuse, accident, alteration, negligence, damage during transit, delivery or installation, fire, flood, riot, or act of God.
- Equipment that has the model number or serial number removed or altered.
- Equipment on which the security seal has been broken.

If the equipment has been changed, altered, modified, or repaired without express written permission from ACE, then the manufacturer shall not be liable for any damages to any person or to any property, which may result from the use of this equipment thereafter.

This equipment is intended for commercial use only and this warranty is void if equipment is used in other than a commercial application.

For warranty and non-warranty related issues please call ACE at 1-800-223-7750 ext 3 to speak to technical support. When calling please have your model number, serial number and proof of purchase ready. To purchase replacement parts, receive online technical support or fill out a warranty claim visit www.admiralcraftequipment.com. It is not necessary to contact the place where you originally purchased your product from.

“THE FOREGOING WARRANTY IS IN LIEU OF ANY AND ALL WARRANTIES EXPRESSED OR IMPLIED INCLUDING ANY IMPLIED WARRANTY OF MERCHANTABILITY OR FITNESS FOR PARTICULAR PURPOSES AND CONSTITUTES THE ENTIRE LIABILITY OF ACE. IN NO EVENT DOES THE LIMITED WARRANTY EXTEND BEYOND THE TERMS STATED HEREIN.”