

# Omega

## INSTRUCTION MANUAL



**MODEL NO: KBSC-105**

**Handheld Steamer**

## IMPORTANT SAFEGUARDS

When using electrical appliances, basic safety precautions should always be followed including the following:

### READ ALL INSTRUCTIONS BEFORE USE.

1. Use appliance only for its intended use.
2. To reduce the risk of electric shock, do not immerse the appliance in water or other liquids.
3. Always turn the appliance to "Off" before plugging or unplugging the appliance from the electrical outlet. Never yank cord to disconnect from outlet, instead, grasp plug and pull to disconnect.
4. Do not allow cord to touch hot surfaces. Let appliance cool completely before putting away. Loop cord loosely around appliance when storing.
5. Always disconnect appliance from electrical outlet when filling with water or emptying, and when not in use.
6. Do not operate appliance with a damaged cord, or if the appliance has been dropped or damaged. To reduce the risk of electric shock, do not disassemble or attempt to repair the appliance, take it to a qualified service center for examination and repair. Incorrect reassembly or repair could cause a risk of fire, electric shock, or injury to persons when the appliance is used.
7. Close supervision is necessary for any appliance being used by or near children. Do not leave appliance unattended while connected.
8. Burns could occur from touching hot metal parts, hot water, or steam. Use care when you turn a steam appliance upside down – there may be hot water in the reservoir.
9. To reduce the risk of contact with hot water emitting from steam vents, check appliance before each use by holding it away from body and operating steam button.
10. To reduce the likelihood of circuit overload, do not operate another high wattage appliance on the same circuit.
11. Never steam clothes while someone is wearing.
12. If an extension cord is absolutely necessary, a 15 ampere rated cord should be used. Cords rated for less amperage may overheat. Care should be taken to arrange the cord so that the cord cannot be pulled or tripped over.
13. When filling the water tank, watch for water that can drip onto the floor and cause you to slip and fall.
14. Care should be taken to arrange the cord so that it cannot be pulled or tripped over. Always make sure you can move freely without getting tangled with the cord.
15. Appliance may cause personal injury or be damaged if dropped.
16. The use of attachments not recommended or sold by the appliance manufacturer may cause injuries or void your warranty.
17. To avoid personal injury and damage to the appliance, only add water to the water tank. NEVER add cleaning solutions, perfumes, oils or any other chemical additives.
18. To reduce the risk of electrical shock, this appliance has a polarized plug (one blade is wider than the other). This plug fits a polarized outlet only one way; if the plug does not fit fully into the outlet, reverse the plug. If it still does not fit, contact a qualified electrician. Do not attempt to defeat this safety feature.

**SAVE THESE INSTRUCTIONS**

## FUNCTION

### Auto Shut-Off

The steamer will automatically shift to auto shut-off mode after being left inactive for 15 minutes . the heating plate , boiler , and water pump will turn off until reactivated , to resume steaming , press the steam trigger or power button and wait for steamer to fully reheat .

### Steam cleaning around the home

Using steam to clean household items that can tolerate hot , damp steam without damage is non-toxic , and inexpensive . this natural cleaning method is beneficial to those sensitive to chemical cleaners or trying to reduce chemicals in the home . steam upholstery , draperies , linens and home textiles to clean and refresh.

## CLEANING AND MAINTENANCE

This product contains no user serviceable parts. Refer to qualified service personnel.

Cleaning and user maintenance shall not be made by children without supervision.

### CLEANING STEAMER EXTERIOR

1. Make sure steamer is off, unplugged and completely cool.
2. Wipe the plate and outer surface with soft, damp cloth. water and small amounts of gentle household soaps , such as dishwashing liquid , can be used on the exterior . never use heavy-duty cleaner , or abrasive scouring pads that may scratch or discolor the steamer .
3. After the steamer has been thoroughly dried, turn it back on and lightly steam over an old cloth. this will help remove any residue left in the steam holes.
4. When finished cleaning, turn the steamer off by pressing the power button until the blue power light turns off (about 2 seconds). unplug, empty tank , and allow time to cool before storing.
5. Unplug the appliance during filling and cleaning.

### CLEANING FRAMES AND ACCESSORIES

For all accessories , allow to fully dry before using again or storing. Accessories are not suitable for cleaning in a washing machine.

- Brush frame : Wipe with damp cloth to clean.
- Delicate frame : Wash with cold water and small amounts of gentle cleanser if needed , the fabric in the frame cannot be removed.
- Ironing pad : spot treat as needed with cold water and gentle cleanser.

### STORING THE STEAMER

1. Check that the steamer is unplugged and completely cool.

## USING THE HANDHELD STEAMER

1. Read the manufacturer's fabric label to make sure the fabrics are suitable for steaming.

• If you see "do not iron" or this icon , do not press the plate against the garment, instead attach the delicate fabric frame and make sure to test on an inconspicuous area prior to steaming the entire garment.

• If you see "do not steam" or this icon , do not steam the garment.

2. Refer to the "Attaching Frames" section for determining whether to use a frame, attach or remove frames while the steamer and frames are cool.

3. Plug the steamer into an outlet and then press the power button (F) the blue power button light will slowly blink, indicating that the steamer is heating.

4. After about 30 seconds the power light will stay on, indicating the steamer is preheated.

5. Prime the water pump by holding steam trigger until steam forms.

6. To generate steam, press down on the steam trigger with your index finger (G) as long as the trigger is held down, steam will emit from the steamer. when the trigger is released, the steam will stop.

Note: It is normal to feel or hear the water pump in the handle.

8. To iron using the plate with the ironing pad, start steaming and then lightly press the metal plate against the garment on the ironing pad. Drag the plate up and down the fabric, being careful to keep hands away from the steam and never leaving the plate in one section for too long similar to how an iron is used.

Note: If the steamer is left inactive, the auto shut-off feature will activate, indicated by the rapidly blinking Power button. to resume steaming after the auto shut-off is activated, either press the steam trigger or press the power button. allow the steamer to preheat if needed.

9. When finished steaming press and hold the power button until its blue light turns off and unplug from outlet

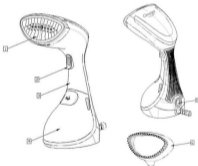
10. Stand steamer on its base and allow it to completely cool off before storing to avoid mineral buildup, empty the tank after each use.



## BEFORE FIRST USE

- **Unpack your Steamer**, remove and peel off any labels adhered to the unit.
- **Remove and save instruction manual.**
- **Wipe outside of the unit** with a damp cloth or sponge to remove any dust. Dry thoroughly.
- **Keep unit on a flat, leveled surface.**
- **When using your Steamer for the first time**, you may notice a small amount of smoke and a slight odor. This is normal when heating the appliance for the first time and there is no reason for concern.

## PARTS DIAGRAM



- |                      |                                     |
|----------------------|-------------------------------------|
| 1 Plate              | 4 Removable water tank              |
| 2 Steam trigger      | 5 Power switch with indicator light |
| 3 Comfortable handle | 6 Brush                             |

## FEARURES

- 120V/60Hz/1200W
- Steam rate up to 30g/min
- Vertical steam
- Water tank capacity: 270ml
- Detachable tank
- Steam trigger locker
- Preheat time: 35s
- For domestic use only

## OPERATION INSTRUCTIONS

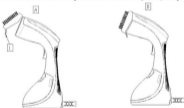
### BRUSH

1. While the frame and steamer are cool , gently attach the top of the frame over the top the steamer head and then click the bottom of the frame into place .(A )

Note :Picture (A) side down .Frame tab points down when in correct position .

2. Allow steamer to cool prior to removing frame . gently pull on the tab .(B )

Note :Be careful when removing frames as condensation may build up during use .



Frame

Usage

<p>Iron frame</p> 	<p><b>Garment Care Label:</b> For any garments that call for medium to high heat and allow for use of steam.  </p> <p><b>Tip:</b> Frame helps remove lint, hair, and animal fur.</p>
---	--

## FILLING THE WATER TANK

1. Place the steamer on its base on a stable surface .
2. Hold the handle to stabilize, press the buttons on 2 sides and pull out the removable water tank.(C)
3. Gently pull out the rubber water tank cover at the top of the tank. ( D )

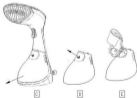
**TIP:** Using distilled , purified, or filtered water is highly recommended and will reduce mineral buildup . do not use oils , perfumes , or scented additives.

4. Using a clean measuring cup, pour water into opening until water reaches the "MAX" level mark on the top of the tank. ( E ) do not overfill . Close the rubber cover securely .

5. Dry off any excess water from the tank . Push water tank back into the steamer base click into place.

6. To refill at any time during use , turn steamer off by pressing the power button until the blue indicator light is off , unplug from outlet , and follow the above procedure.

**Tip :**After the steam preheat for 35 seconds, your steamer are ready to use by hold the trigger.



2. Gather the cord into even ovals and then gently cinch with the strip of hook and loop. ( ④ )

3. Always store steamer upright on its base to prevent water leakage.

Tip : emptying the tank after each use is recommended because standing water can leave a residue over time .



## TROUBLE SHOOTING

Problem	Possible Cause	Solution
The steamer does not produce any steam.	The steamer has not heated up sufficiently. You pressed the trigger and then released it. The water level in the water tank is too low. The steamer is not plugged in. Electrical outlet is not working. The steamer is not turned on.	Let the steamer heat up for about 40 seconds before using it. Press the steam trigger fully and keep it pressed or move it to the lock down position for continuous steam. Unplug the steamer, let it cool completely and refill the water tank. Make sure the steamer is plugged into an electrical outlet. Plug into another electrical outlet. Move the slide switch to Low or High setting.
The steamer makes a rattling noise and vibrates.	The water pump inside the unit detects the water level is low.	Unplug the unit, let it cool completely and refill water tank.
The steamer leaves water drops on the garment.	The accessory attachment being used may have condensation.	Let the appliance cool completely, remove attachment and wipe dry.
The steamer is making a buzzing noise while steaming.	The water pump is running.	This noise is normal.

Company: Hangzhou Jisheng Electronic Commerce Co.,Ltd

Email: jsheng\_ec@outlook.com