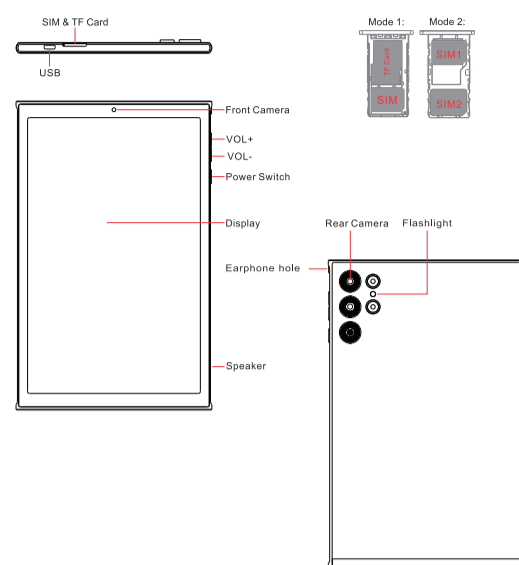


# Tablet S26ultra

## Buttons Description



01

## Getting started

Before Powering up the Tablet, ensure that it is fully charged.

### Power On/Off

Press and hold the power button for 2-3s to turn on your tablet. Select your language and set up your tablet following the start guide. Press and hold the power button for 2s, then release it. It will show Power Off and Restart on the screen. Tap Power Off to turn off the tablet. Press and hold the power button for 5s to do a forced shutdown when it's frozen.

### Battery

Rechargeable Li-Ion battery is installed in the tablet. We suggest you drain the battery completely once a month if you only use your tablet occasionally. DO NOT dispose of tablet in a fire.

### Sleep Mode

Simply press the power button once to switch the tablet to the Sleep Mode when the tablet is ON. Press again to wake it up.

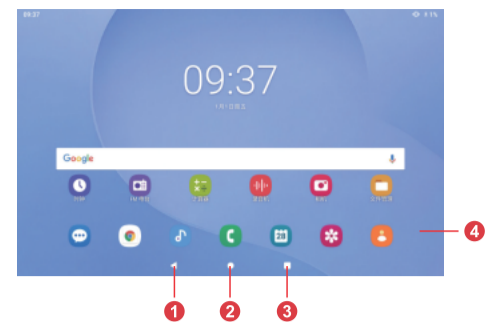
### Tip :

Go to Settings>Display>Sleep to set the time of entering the Sleep Mode.

02

## HOME SCREEN

Icons on the Bottom Menu



- 1 Back
- 2 Home
- 3 Recent Activities
- 4 Apps Collection

### Wallpapers, Widgets and Home Settings

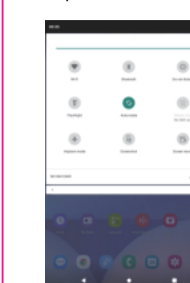
Tap and hold the empty section of a Home screen. WALLPAPERS, WIDGETS and HOME SETTINGS will be displayed. Tap WALLPAPERS icon to change the current wallpaper of the tablet from the default wallpapers or your photos. Tap WIDGETS, touch and hold any widget (e.g. Clock), then slide and add it to a Home screen. Remove it by sliding to X. Tap HOME SETTINGS to enable/disable Add icon to Home screen. This is applicable to the new Apps installed from Play Store.

03

## SETTING BASICS

### Quick Settings

Swipe down from the top of the screen to access Quick Settings



- Wi-Fi Tap to connect to a wireless network
  - Bluetooth 4.0. Enable/disable the Bluetooth devices or view paired devices
  - Do Not Disturb Block sounds or vibrations according to the different modes (Total silence, Alarms only and Priority only)
  - Portrait (Auto-rotate/ Landscape)
  - Airplane Mode. Turn on/off all the network connectivity
- Tap the icon to change the options in the Quick Settings.

### More Settings

Swipe from the top of the screen, then tap the icon to enter the detailed Setting interface. Or, tap the Settings icon on the Home screen to enter

### Network & Internet

- Connect to any working Wi-Fi
- Enable/disable the Airplane Mode
- Monitor the data usage

### Connected devices

- Turn on/off Bluetooth
- Pair with Bluetooth devices and check the paired devices
- Cast device and check the cast device
- Add and check printers

04

Swipe down from the top of the screen to access Quick Settings

### Apps & notifications

- Check the Apps recently opened
- Check all the Apps on the tablet
- Set the App permissions
- Uninstall the third-party Apps
- Adjust App notification settings
- Clear the cache of the Apps

### Battery

- Display the remaining battery power as a percentage
- Enable/disable the Battery Saver
- Adjust the time of entering the Sleep Mode

### Display

- Adjust the screen brightness
- Adjust the font size and display size
- Set a screen save
- Change the wallpaper
- Adjust the time of entering the Sleep Mode

### Sound

- Set volume levels for media, alarms, and notifications
- Set preferences of Do Not Disturb
- Set the tones for notifications and alarms
- Turn on/off the sound for screen lock, charging and touch

### Screenshot

- Set the delay time for screenshot
- Set the location folder of screenshots
- Switch on/off Show the screenshot button in the statusbar

### Tip :

Press the volume down button and the power button together to capture a screenshot. Or, switch on show the screenshot button in the statusbar, then tap the icon on the bottom menu to capture a screenshot.

05

## Storage

View and manage your storage space

### Security & Location

- Set screen lock pattern, e.g. password, PIN, Swipe, etc.
- Enable/disable all the notifications while the screen is locked
- Activar / desactivar los servicios de specific Apps
- Turn on/off the location services for specific Apps
- Set to show/hide the password when input a password

### Users & accounts

- Add and manage the user accounts on your tablet

### Accessibility

- For vision and hearing impaired users, manage settings for Screen readers, Subtitle, and more

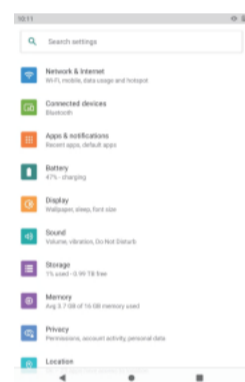
### Google

- Set the preferences for Google related services

### Sistema

- Set Language. Tap Languages > Languages > add, a language to add your language. After adding, hold and slide the to the top to change the language.
- Restore factory setting. Tap Languages > Languages > add, a language to add your setting.
- Set the date and time
- Turn on/off the Backup
- Check the detailed information about the table

06

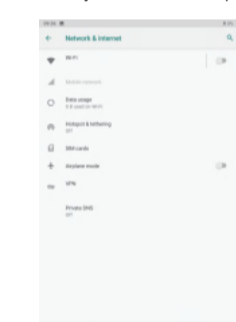


## NETWORK CONNECTION

Go to Wi-Fi settings in the Settings interface or directly enter Quick Settings.

### Wi-Fi Connection

1. Tap Network and Internet and turn on the Wi-Fi. All Wi-Fi connections available will be listed.
2. Select your Wi-Fi and input the correct password.



### Bluetooth Paring

Please turn on the Bluetooth on your tablet and your bluetooth device.

1. Tap Connected devices and turn on the Bluetooth;
2. Tap Bluetooth > pair new device to enter the scanning interface. Devices available will be displayed after a few seconds;
3. Tap the desired device to get a pairing code and click PAIR on both devices. An automatic connection will be applied to some devices.

07

## APP MANAGEMENT

### App Download and Installation

1. Tap and open Google Play on the Home screen;
2. Log into your Google Account, search and download the App you need.

### App Management

#### Move the App

Tap and hold the App, then slide it to a desired screen.

#### Remove the App from the Home screen

Tap and hold the App, then slide to X to remove it from your Home screen.

#### Uninstall the App

Tap and hold the App, then slide to the trash bin to uninstall the App.

#### Clear the Cache of the App

1. Go to Settings > Apps & notifications;
2. Select an App > Storage > CLEAR CACHE.

## INTERNET NAVIGATION

Please make sure the tablet is connected to a working Wi-Fi network before navigating the Internet. You may use the Chrome browser pre-installed or use another browser downloaded.

## MULTIMEDIA

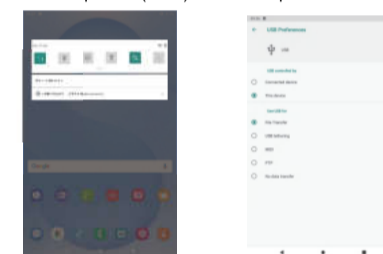
### Connecting to the Computer

1. Connect your tablet to the computer with USB cable and go to Quick Settings;
2. Tap Android > Systems. USB charging this device > Tap for more options > Use USB to;
3. Select Transfer files;
4. Go to your computer and find your tablet J5 to transfer files between your tablet and computer

08

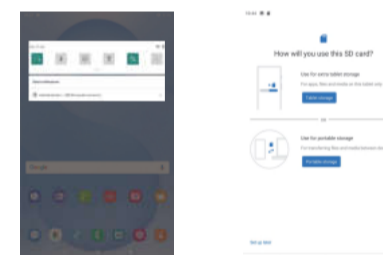
## Tip :

Select Charging this device to charge your tablet; Select Transfer photos (PTP) to transfer photos between the devices.



### Connecting to an External Device

1. Install a microSD card into the microSD card slot and go to Quick Settings;
2. Tap New SD card detected or Set Up prompt;
3. Set the microSD card as a portable storage by selecting Use as portable storage. Enter microSD Card storage to move files between the card and tablet.



09

## Connecting to an External Device

### Solution of Problems

- Q1. The tablet can't be open.**
- Restart your tablet after charging for 30 minutes.
  - Press the ON button to verify if the tablet is in suspension mode; Turn off the tablet and restart it.
  - Keep pressing the ON button for 5 seconds.
  - Press and reset the button with a pin to restart your tablet.
- Q2. The tablet doesn't charge.**
- Assure that the USB cable is plugged correctly in the charging hole.
  - Try another compatible USB cable and
- Q3. Error message occurs during the operation.**
- Uninstall the application with error message and later reinstall it.
  - Press the button of restore with a clip to restart the tablet.
- Q4. The tablet cannot be detected by the computer.**
- Make sure the tablet is powered on;
  - Try another USB cable;
  - Try another USB port on the computer;
  - Instead of Charge this device, choose Transfer files or Transfer photos (PTP) when connecting the tablet to the computer.
- Q5. The tablet cannot connect to the Wi-Fi.**
- Make sure the Wi-Fi in your tablet is ON;
  - Make sure you input the correct password when connecting the Wi-Fi;
  - Restart the router;
  - Make sure there is no filter setting or device connection limitation in the setting of the router;
  - Forget the current Wi-Fi, reset the router and connect the Wi-Fi again.

10

**FCC Statement**  
This device complies with Part 15 of the FCC rules. Operation is subject to the following two conditions: 1) This device may not cause harmful interference, and 2) this device must accept any interference received, including interference that may cause undesired operation.  
Note: This equipment has been tested and found to comply with the limits for a Class B digital device, pursuant to part 15 of the FCC Rules. These limits are designed to provide reasonable protection against harmful interference in a residential installation. This equipment generates uses and can radiate radio frequency energy and, if not installed and used in accordance with the instructions, may cause harmful interference to radio communications. However, there is no guarantee that interference will not occur in particular installation. If this equipment does cause harmful interference to radio or television reception, which can be determined by turning the equipment off and on, the user is encouraged to try to correct the interference by one or more of the following measures:  
-Reorient or relocate the receiving antenna.  
-Increase the separation between the equipment and receiver.  
-Connect the equipment into an outlet on a circuit different from that to which the receiver is connected.  
-Consult the dealer or an experienced radio/TV technician for help.  
Changes or modifications not expressly approved by the party responsible for compliance could void the user's authority to operate the equipment.

**ISED Statement:**  
This device contains licence-exempt transmitter(s)/receiver(s) that comply with Innovation, Science and Economic Development Canada's licence-exempt RSS(s). Operation is subject to the following two conditions:  
(1) This device may not cause interference, and  
(2) This device must accept any interference, including interference that may cause undesired operation of the device.  
Cet appareil contient des émetteurs/récepteurs sans licence conformes aux normes CNR d'Innovation, Sciences et Développement économique Canada. Son fonctionnement est assujéti aux deux conditions suivantes :  
(1) Cet appareil ne doit pas causer d'interférence ; et  
(2) Cet appareil doit tolérer toute interférence, y compris celles qui pourraient entraîner un fonctionnement indésirable.  
**RF Exposure Statement**  
SAR tests are conducted using standard operating positions according standards with the device transmitting at its highest certified power level in all tested frequency bands, although the SAR is determined at the highest certified power level, the actual SAR level of the device while operating can be well below the maximum value.  
This model product has been tested and meets the RF exposure guidelines SAR Limit 1.6W/kg with the test distance 0mm for body worn. The highest SAR<sub>avg</sub> value is 0.72 W/kg. The use of belt clips, holsters and similar accessories should not contain metallic components in its assembly. The use of accessories that do not satisfy these requirements may not comply with RF exposure requirements, and should be avoided.  
Les tests SAR sont effectués en utilisant des positions de fonctionnement standard conformément aux normes, l'appareil émettant à son niveau de puissance certifié le plus élevé dans toutes les bandes de fréquences testées. Bien que le SAR soit déterminé au niveau de puissance certifié le plus élevé, le niveau SAR réel de l'appareil en fonctionnement peut être bien inférieur à la valeur maximale.  
Ce produit modèle a été testé et répond aux directives d'exposition aux radiofréquences, limite SAR de 1,6 W/kg avec une distance de test de 0 mm pour un port sur le corps. La valeur SAR<sub>avg</sub> la plus élevée est de 0,72 W/kg. Les accessoires de ceinture, étuis et accessoires similaires ne doivent pas comporter de composants métalliques. L'utilisation d'accessoires non conformes à ces exigences peut entraîner une non-conformité aux exigences d'exposition aux RF et devrait être évitée.  
The device is restricted to indoor use only when operating in the 5150 to 5250MHz frequency range.  
L'appareil est limité à une utilisation à l'intérieur seulement lorsqu'il fonctionne dans la gamme de fréquences de 5150 à 5250 MHz.