

User Manual

Smart Fan Control Switch, Works with Alexa only, No hub required, Single Pole

Guide de l'utilisateur

Interrupteur intelligent à commande de ventilateur, fonctionne avec Alexa uniquement, aucun concentrateur requis, unipolaire

Manual del usuario

Interruptor inteligente de control de ventilador, funciona solo con Alexa, no requiere concentrador, un solo polo

BOCPY3ZJNH

Contents

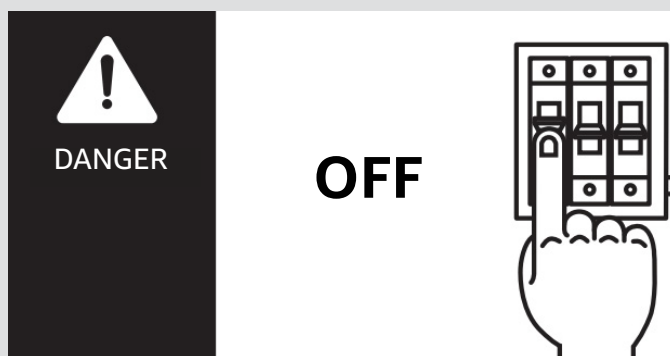
Safety Instructions	3
Package Contents.....	3
Compatibility.....	4
Parts Overview.....	4
Set Up the Smart Fan Control.....	5
Set Up the Smart Fan Control with Alexa.....	8
Alternative Setup Methods.....	9
Using the Smart Fan Control.....	9
Troubleshooting.....	11
I can't identify the NEUTRAL wires.....	11
I can't identify the LOAD and LINE wires.....	11
My smart fan control is not working after installation.....	11
My smart fan control won't connect to Alexa.	11
Specifications	12
Legal Notices	12
Feedback and Help.....	13

Safety Instructions

- ▶ Only replace the existing switch that independently adjusts the fan speed.
- ▶ Only AC powered fans can be controlled.
- ▶ Do not use to control fans that have integrated fan speed controls (such as fans that have a remote control or Bluetooth/Wi-Fi enabled), unless the integrated control is removed from the ceiling fan.
- ▶ The smart switch is designed for single-pole (one location) wiring (not compatible with 3-way/multi-way switch wiring).
- ▶ Do not use to control exhaust fans (such as bathroom or kitchen exhaust fans).
- ▶ This control is to be used with ceiling fans that are rated 120V AC, 60Hz, load 1.5A Max.
- ▶ NEUTRAL wire is required to install the smart switch. If your house was built or remodeled before mid-80s, you may not have a NEUTRAL wire. Please try another location or call a qualified electrician for help.
- ▶ Install your fan control where there is a strong Wi-Fi signal.
- ▶ Keep your mobile device close to the fan control until setup is complete.

Electrical Wiring

⚠ DANGER Risk of fire, electric shock, or death! Turn off the power at the circuit breaker or fuse and test that power is off before installation.



- ▶ Do not install the outlet near wet locations such as kitchens or baths.

⚠ NOTICE NEUTRAL WIRES ARE REQUIRED FOR INSTALLATION.

If missing, look for a bundle of white wires folded in the back of the outlet box. In the USA, most homes built after 1978 have NEUTRAL wires.

Package Contents

- ▶ Smart in-wall fan control
- ▶ Front wall plate
- ▶ Wire connectors (x4)
- ▶ Screws (x2)
- ▶ *Setup Guide*
- ▶ *Safety Manual*

Compatibility

This fan control is designed to work with:

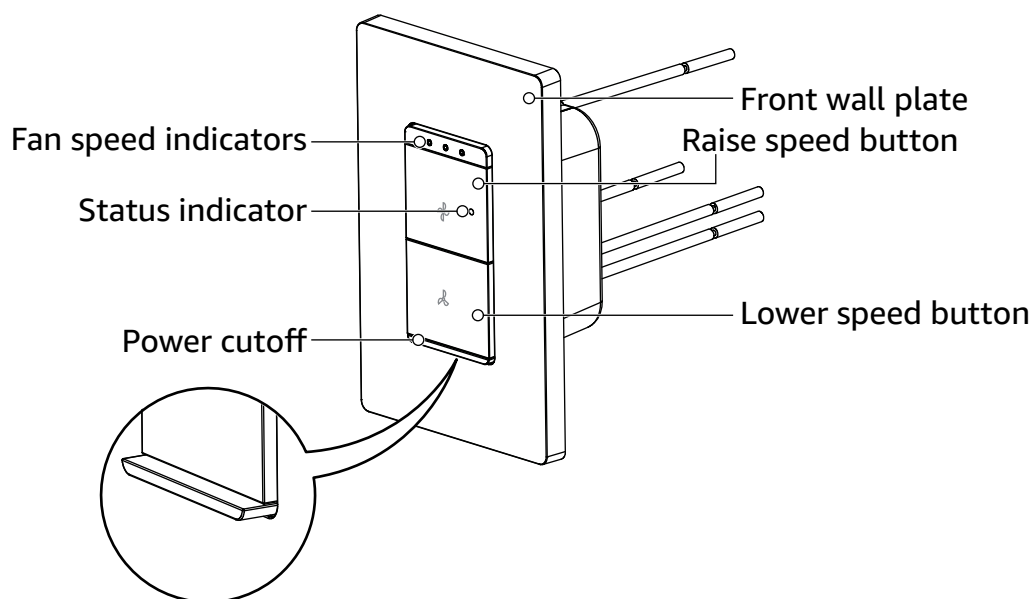
- ▶ Powered AC ceiling fans that are rated 120V AC, 60Hz, load 1.5A Max.
- ▶ Switch boxes that contain a NEUTRAL wire
- ▶ Single-pole (one location) wiring
- ▶ 2.4GHz Wi-Fi network
- ▶ An Android, iOS, or Fire OS device to set up with the Alexa app

This fan control is **not** for use with:

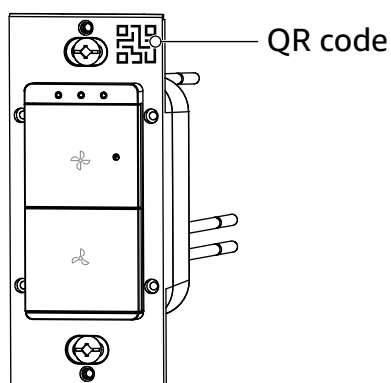
- ▶ Control exhaust fans, such as bathroom or kitchen exhaust fans.
- ▶ Control fans that have integrated fan speed controls, such as fans that have a remote control or Bluetooth/Wi-Fi enabled, unless the integrated control is removed from the ceiling fan
- ▶ 3-way/multi-way switch wiring
- ▶ DC powered fans

Parts Overview

Front (with front wall plate)



Inside (without front wall plate)



Tools Needed

- ▶ Electrical tester
- ▶ Flathead screwdriver
- ▶ Phillips-head screwdriver
- ▶ Wire stripper
- ▶ Pliers

Set Up the Smart Fan Control

Remove the Existing Switch

1. **WARNING: Turn off electricity to the switch at your circuit breaker or fuse, then use an electrical tester to make sure power is off.**
2. Unscrew and remove the existing wall plate.
3. Unscrew and pull out the existing switch receptacle.
4. Identify the wires in the switch box:
 - ▶ GROUND
 - ▶ LINE
 - ▶ NEUTRAL
 - ▶ LOAD

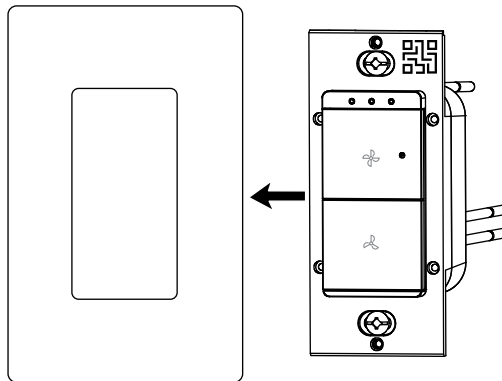
NOTICE

- ▶ To verify you have NEUTRAL wires, look for a bundle of white wires in the switch box.
- ▶ To identify the LOAD and LINE wires, turn on the power at the circuit breaker or fuse, then use a tester to identify which side is connected to LINE (electrical panel) vs. LOAD (fixture). Turn off the power again when you have finished identifying the wires.
- ▶ If any of the wires are missing, have different colors, or can't be identified, stop installation and contact a qualified electrician.

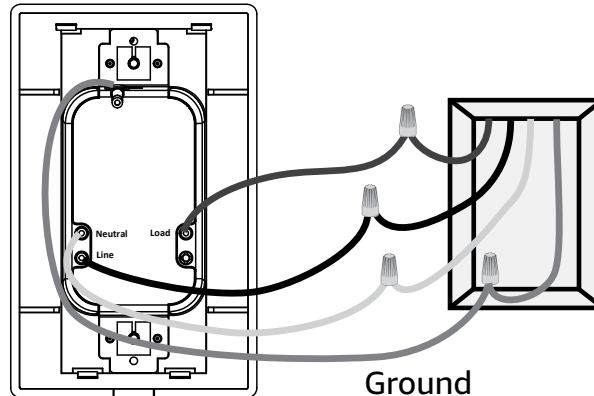
5. Disconnect the wires from the existing switch.
6. If needed, trim the exposed copper wire ends to 7/16" (11 mm).

Install the Smart Fan Control

1. **WARNING:** Turn off electricity to the switch at your circuit breaker or fuse, then use an electrical tester to make sure power is off.
2. Pry off the fan control's wall plate with a flathead screwdriver.



3. Verify that the switch box has these wires: GROUND, LINE, NEUTRAL, and LOAD.
4. Connect the GROUND wire from the wall box to the wire on the fan control using a wire connector.
5. Connect the LINE wire from the wall box to the **Line** (hot) wire on the fan control using a wire connector.
6. Connect the NEUTRAL wire from the wall box to the **Neutral** wire on the fan control using a wire connector.
7. Connect the LOAD wire from the wall box to the **Load** wire on the fan control using a wire connector.

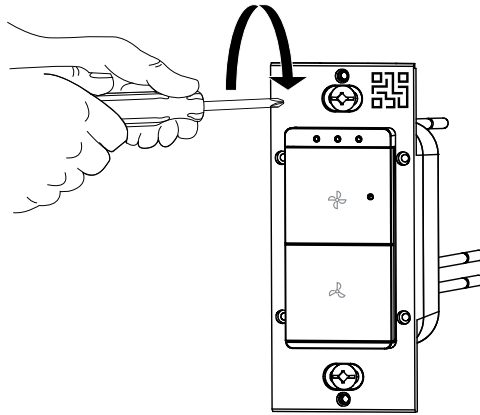


NOTICE Insert wires into the wire connector then twist clockwise. Make sure the connection is tight by gently pulling all the cables one by one. Make sure no bare wire is shown below the wire connector.

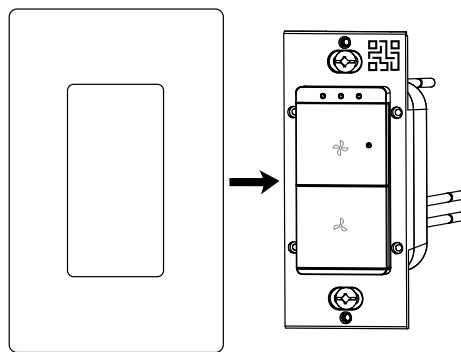
8. Hold the wire connectors and gently pull each wire to make sure connections are secure.

9. Push the wires into the switch box, then secure the fan control to the electrical box using the two screws.

NOTICE Do not overtighten the screws as it could restrict the operation of the switch.



10. Snap the front wall plate onto the fan control.



11. After the connections are completed, turn on the power at the circuit breaker or fuse. Test if the fan control works. The LED will blink green rapidly for 5 minutes to indicate the device is ready to set up.

Set Up the Smart Fan Control with Alexa

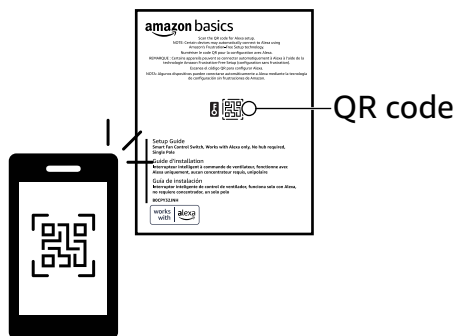
You can set up the Smart Fan Control with the QR code on your printed *Setup Guide* (recommended) or on the product. You can also set it up without a QR code.

Set up with the *Setup Guide* QR code (recommended)

NOTICE Certain devices may automatically connect to Alexa using Amazon's Frustration-Free Setup technology.

1. Download the latest version of the Alexa app from the app store, then log in.
2. Power on the Amazon Basics Fan Control.
3. In the Alexa app, tap **More** from the bottom menu, then tap **Add Device**.
4. Tap applicable device, then tap **Amazon Basics**.
5. Follow the steps in the Alexa app to complete setup. When prompted, scan the QR code on your printed *Setup Guide*. If you have more than one smart fan control and are scanning the QR code in your *Setup Guide*, match the DSN number on the smart fan control with the QR code.

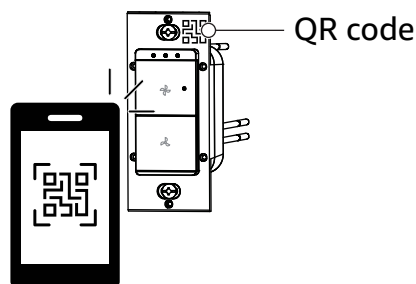
NOTICE Do not scan the barcode on the packaging. If the barcode scan fails, refer to "Alternative Setup Methods" on page 9, below.



Alternative Setup Methods

Option 1: Set up with the QR Code on the Product

1. Download the latest version of the Alexa app from the app store, and log in.
2. Power on the Amazon Basics Smart Fan Control Switch.
3. In the Alexa app, tap **More** from the bottom menu, then tap **Add Device**.
4. Tap applicable device, then tap **Amazon Basics**.
5. Follow the steps in the Alexa app to complete setup. When prompted, scan the QR code on the product.



NOTICE Do not scan the barcode on the packaging. If the barcode scan fails or you lose the Setup Guide, refer to “Option 2: Set Up without the Barcode,” below.

Option 2: Set Up without the Barcode



Use these instructions if the QR code setup does not work.

1. Power on the Amazon Basics Smart Fan Control Switch.
2. In the Alexa app, tap **More** from the bottom menu, then tap **Add Device**.
3. Tap applicable device, then tap **Amazon Basics**.
4. When prompted to scan the barcode, tap **DON'T HAVE A BARCODE?**
5. Tap **Next**, then follow the on-screen instructions to complete setup.

Using the Smart Fan Control

- ▶ Press the raise fan speed button to turn on the fan. The power indicator lights when the fan is on.
- ▶ Press the raise speed button or lower speed button to increase or decrease the fan's speed. The fan speed indicators show the fan speed. See “Understanding the Indicators” on page 10 for more information.

Removing the Smart Fan Control from the Alexa App

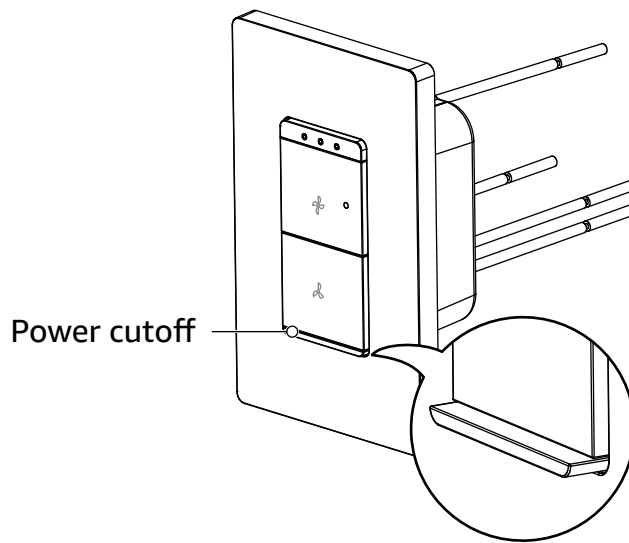
1. Open the Alexa app and tap **Devices** from the bottom menu.
2. Select the device you want to remove, then tap  settings.
3. Tap  trash. The smart fan control is removed from Alexa.

NOTICE After removing the smart fan control, you may need to factory reset it before reconnecting to a smart home hub.

Changing a Fan

When the fan control is turned off, a small amount of electricity still flows. The power cutoff disconnects power to safely change the fan. To change a fan:

1. Turn off the fan, then pull out the power cutoff by hand or by using a flathead screwdriver.



2. Change the fan.
3. Push the power cutoff back in.

Understanding the Indicators

Status Indicator

LED Status	Description
LED blinks red and green alternately	Fan control is factory reset
LED blinks green rapidly for 5 minutes	Fan control is ready for setup
LED lights red for 1 minute	Fan control is unregistered
LED lights green for 3 seconds	Fan control is connected
LED lights solid green and stays lit	Fan control is connected and fan is off
LED is off	Fan control connected and fan is on
LED blinks red quickly for 1 minute	Fan control is disconnected

Fan Speed Indicators

LED Status	Description
All LEDs are off	Fan is off
One LED lights up	Minimum speed
Two LEDs light up	Medium speed
Three LEDs light up	Maximum speed

Resetting to Factory Defaults

- ▶ Press and hold the raise speed button and lower speed button together for 10 seconds until the status indicator blinks red and green alternately, then release the buttons.

Troubleshooting

If the smart fan control is not functioning properly, try the following solutions.

Problem

I can't identify the NEUTRAL wires.

Solutions

- ▶ If you have tried to identify the wires and are still unsure, call a qualified electrician.
- ▶ Turn off the power to your switch, remove the face plate and the existing switch, then examine the wires. If you see a bundle of white wires, it is likely that those are NEUTRAL wires.
- ▶ If your house was built or remodeled before mid-80s, you may not have a NEUTRAL wire. Please try another location or call an electrician for help.

Problem

I can't identify the LOAD and LINE wires.

Solutions

- ▶ Turn off the power on your switch, remove the face plate and the existing switch, then turn the power back on. Without touching any part of your existing switch or wires, hover the electrical tester over the black wires. The electrical tester will flash and make a sound when hovering over the LINE wire. When the electrical tester doesn't glow at all, that is the LOAD wire.
- ▶ If you have tried to identify the wires and are still unsure, call a qualified electrician.

Problem

My smart fan control is not working after installation.

Solutions

- ▶ Make sure that the power is turned on.
- ▶ Verify that you have used a NEUTRAL wire for installation.
- ▶ Verify that all wire connections are correct (LOAD, NEUTRAL, LINE, GROUND). See "Install the Smart Fan Control" on page 6 for more information.
- ▶ Ensure that the power cutoff is pushed in.
- ▶ If you have additional questions, contact a qualified electrician.

Problem

My smart fan control won't connect to Alexa.

Solutions

- ▶ Make sure that your phone/tablet and the Alexa app are updated to the latest software version.
- ▶ Verify that your phone/tablet is within 32.81 ft. (10 m) of your fan control.
- ▶ Make sure that your phone/tablet and smart fan control are connected to the same 2.4GHz Wi-Fi network. The smart fan control is not compatible with 5GHz networks.
- ▶ If you have a dual Wi-Fi router and both network signals have the same name, rename one and try reconnecting to the 2.4GHz network.
- ▶ Make sure that you scan the QR code provided in your *Setup Guide* or on the smart fan control.
- ▶ Factory reset your fan control. See "Resetting to Factory Defaults" on page 10.

Specifications

Supply Voltage	120V AC, 60Hz
Max. Current	1.5A Max.
Electric Quantity Detection	Not supported
Standby Power	≤1W
Ambient Temperature	-22° to 104°F (-30° to 40°C)
Storage Temperature	-4° to 140°F (-20° to 60°C)
Operating Humidity	10% to 90% RH non-condensing
Wireless Protocol	Wi-Fi + Bluetooth (Bluetooth only does pairing)
Wi-Fi	2.4GHz
Protection Class	IP20
Authentication	cETLus, FCC ID IC + Voc

Legal Notices

Trademarks



The Wi-Fi CERTIFIED™ logo is a registered trademark of Wi-Fi Alliance®.



The Bluetooth® word mark and logos are registered trademarks owned by Bluetooth SIG, Inc. and any use of such marks by Amazon.com Services LLC is under license. Other trademarks and trade names are those of their respective owners.

FCC - Supplier's Declaration of Conformity

Unique Identifier	BOCPY3ZJNH - Amazon Basics Smart Fan Control Switch, Works with Alexa only, No hub required, Single Pole
Responsible Party	Amazon.com Services LLC.
U.S. Contact Information	410 Terry Ave N. Seattle, WA 98109 USA
Telephone Number	(206) 266-1000

FCC Compliance Statement

- This device complies with Part 15 of the FCC Rules. Operation is subject to the following two conditions:
 - this device may not cause harmful interference, and
 - this device must accept any interference received, including interference that may cause undesired operation.
- Changes or modifications not expressly approved by the party responsible for compliance could void the user's authority to operate the equipment.

FCC Interference Statement

This equipment has been tested and found to comply with the limits for a Class B digital device, pursuant to part 15 of the FCC Rules. These limits are designed to provide reasonable protection against harmful interference in a residential installation. This equipment generates, uses and can radiate radio frequency energy and, if not installed and used in accordance with the instructions, may cause harmful interference to radio communications. However, there is no guarantee that interference will not occur in a particular installation. If this equipment does cause harmful interference to radio or television reception, which can be determined by turning the equipment off and on, the user is encouraged to try to correct the interference by one or more of the following measures:

- ▶ Reorient or relocate the receiving antenna.
- ▶ Increase the separation between the equipment and receiver.
- ▶ Connect the equipment into an outlet on a circuit different from that to which the receiver is connected.
- ▶ Consult the dealer or an experienced radio / TV technician for help.

RF Warning Statement: The device has been evaluated to meet general RF exposure requirements. This device should be installed and operated with minimum distance of 8" (20 cm) between the radiator and your body.

Canada IC Notice

This Class B digital apparatus complies with Canadian CAN ICES-003 (B)/NMB-003 (B) standard.

RSS Statement

This device contains licence-exempt transmitter(s)/receiver(s) that comply with Innovation, Science and Economic Development Canada's licence-exempt RSS(s). Operation is subject to the following two conditions:

- (1) This device may not cause interference.
- (2) This device must accept any interference, including interference that may cause undesired operation of the device.

Feedback and Help

We would love to hear your feedback. To ensure we are providing the best customer experience possible, please consider writing a customer review.

[amazon.com/review/review-your-purchases#](https://www.amazon.com/review/review-your-purchases#)

If you need help with your Amazon Basics product, please use the website or number below.

[amazon.com/gp/help/customer/contact-us](https://www.amazon.com/gp/help/customer/contact-us)

+1 877-485-0385

Table des matières

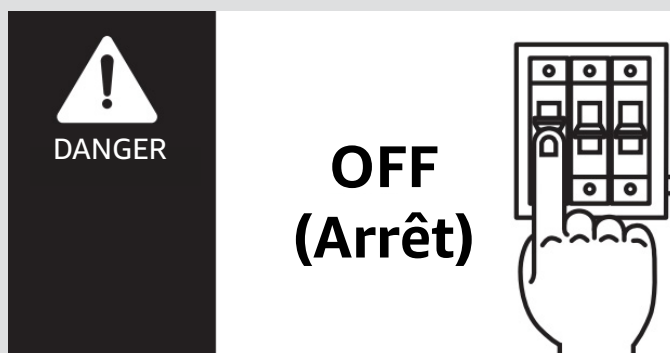
Consignes de sécurité	15
Contenu de l'emballage	15
Compatibilité.....	16
Aperçu des pièces	16
Installation de la commande intelligente de ventilateur	17
Installation de la commande intelligente de ventilateur avec Alexa	20
Méthodes alternatives de configuration.....	21
Utilisation de la commande intelligente de ventilateur	21
Problèmes et solutions.....	23
Il n'est pas possible d'identifier les fils NEUTRES.	23
Il n'est pas possible d'identifier les fils de CHARGE et de LIGNE.	24
Mon interrupteur intelligent de commande du ventilateur ne fonctionne pas après l'installation.	24
La commande intelligente de ventilateur ne se connecte pas à Alexa.....	24
Spécifications	25
Avis juridiques	25
Commentaires et Aide	26

Consignes de sécurité

- ▶ Remplacer uniquement l'interrupteur existant qui ajuste indépendamment la vitesse du ventilateur.
- ▶ Seuls les ventilateurs alimentés en c.a. peuvent être contrôlés.
- ▶ Ne pas utiliser pour contrôler les ventilateurs qui ont des commandes de vitesse intégrées (tels que les ventilateurs qui ont une télécommande ou une fonction Bluetooth/Wi-Fi activée), à moins que la commande intégrée ne soit retirée du ventilateur de plafond.
- ▶ L'interrupteur intelligent est conçu pour un câblage unipolaire (un emplacement) et n'est pas compatible avec un interrupteur à câblage tridirectionnel ou multidirectionnel.
- ▶ Ne pas utiliser pour contrôler les ventilateurs d'évacuation (tels que les ventilateurs de salle de bain ou de cuisine).
- ▶ Cette commande doit être utilisée avec les ventilateurs de plafond alimentés en courant alternatif, 120 V, 60 Hz, charge de 1,5 A maximum.
- ▶ Un fil NEUTRE est requis pour l'installation de l'interrupteur intelligent. Si le domicile a été construit ou rénové avant le milieu des années 80, il est possible qu'il n'y ait pas de fil neutre. Essayer un autre emplacement ou appeler un électricien certifié pour toute assistance.
- ▶ Installer la commande du ventilateur à un endroit avec un signal Wi-Fi puissant.
- ▶ Garder l'appareil mobile à proximité de la commande du ventilateur jusqu'à ce que la configuration soit terminée.

Câblage électrique

⚠ DANGER Risque d'incendie, de choc électrique, voire la mort! Couper l'alimentation électrique au niveau du disjoncteur ou du fusible et vérifier que l'alimentation est arrêtée avant l'installation.



- ▶ Ne pas installer ce produit à proximité d'emplacements humides, tels qu'une cuisine ou une salle de bains.

⚠ AVIS DES FILS NEUTRES SONT REQUIS POUR L'INSTALLATION.

S'il en manque, chercher un ensemble de fils blancs pliés au dos de la boîte de distribution. Aux É.-U., la plupart des maisons construites après 1978 ont des fils NEUTRES.

Contenu de l'emballage

- ▶ Commande intelligente murale de ventilateur
- ▶ Plaque murale avant
- ▶ Connecteurs de fils (4)
- ▶ Vis (2)
- ▶ *Guide d'installation*
- ▶ *Manuel de sécurité*

Compatibilité

Cette commande de ventilateur est conçue pour fonctionner avec :

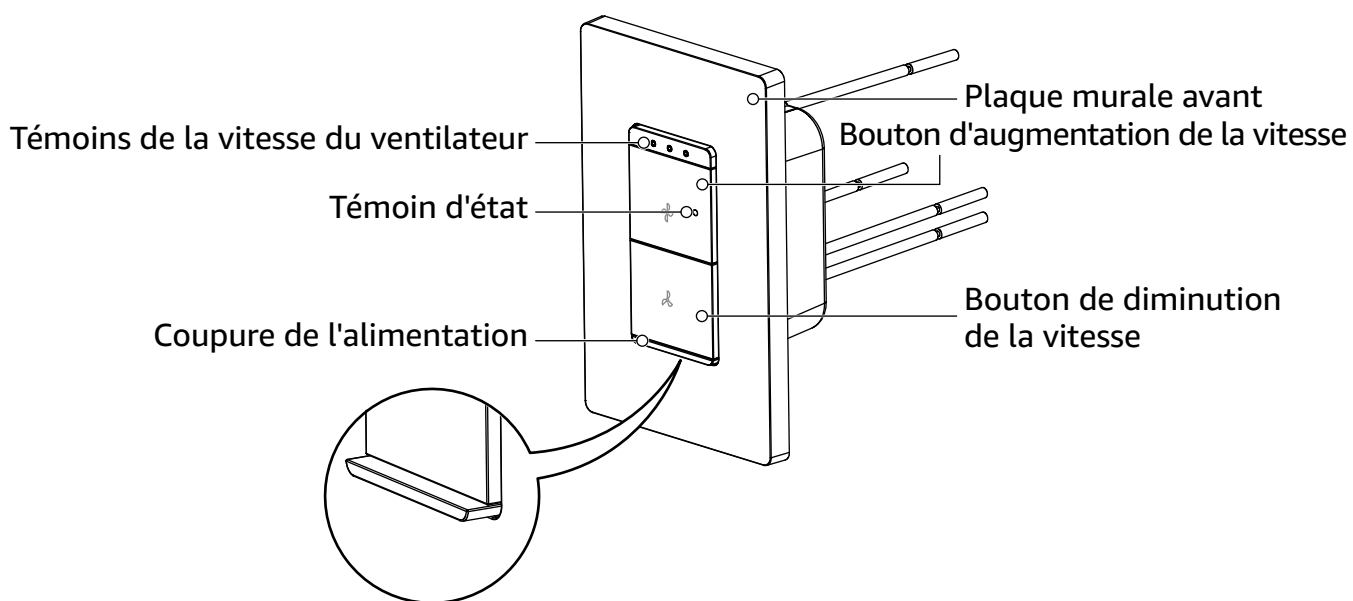
- ▶ Ventilateurs de plafond alimentés en courant alternatif, 120 V, 60 Hz, charge de 1,5 A maximum.
- ▶ Boîtes de distribution avec fil NEUTRE
- ▶ Câblage unipolaire (un emplacement)
- ▶ Réseau Wi-Fi de 2,4 GHz
- ▶ Un appareil Android, iOS ou Fire OS pour la configuration avec l'application Alexa

Cette commande de ventilateur **ne doit pas** être utilisée pour :

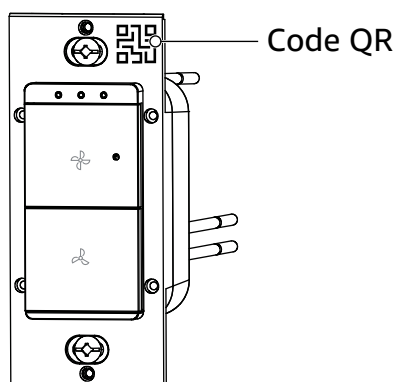
- ▶ Contrôler les ventilateurs d'évacuation, tels que les ventilateurs de salle de bain ou de cuisine.
- ▶ Contrôler les ventilateurs dotés d'une commande de vitesse intégrée, tels que les ventilateurs équipés d'une télécommande ou d'une fonction Bluetooth/Wi-Fi activée, à moins que la commande intégrée ne soit retirée du ventilateur de plafond
- ▶ Du câblage d'interrupteur tridirectionnel ou multidirectionnel
- ▶ Des ventilateurs alimentés en c.c.

Aperçu des pièces

Avant (avec la plaque murale avant)



Intérieur (sans la plaque murale avant)



Outils nécessaires

- ▶ Testeur électrique
- ▶ Tournevis à tête plate
- ▶ Tournevis cruciforme
- ▶ Outil à dénuder
- ▶ Pincés

Installation de la commande intelligente de ventilateur

Retrait de l'interrupteur existant

1. **AVERTISSEMENT : Couper l'alimentation électrique de l'interrupteur, du disjoncteur ou fusible, puis utiliser un testeur électrique pour s'assurer que l'alimentation est coupée.**
2. Dévisser et retirer la plaque murale existante.
3. Dévisser et extraire le réceptacle existant de l'interrupteur.
4. Identifier les câbles dans la boîte de distribution :
 - ▶ MISE À LA TERRE
 - ▶ LIGNE
 - ▶ NEUTRE
 - ▶ CHARGE

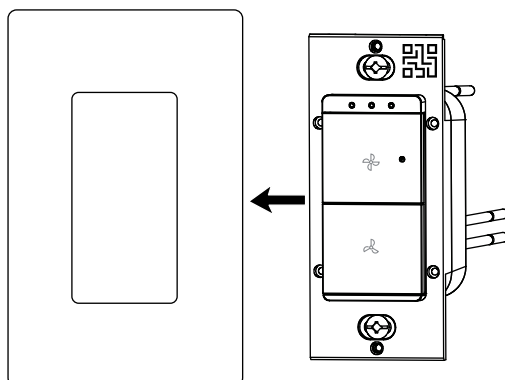
REMARQUE

- ▶ Pour vérifier la présence de fils NEUTRES, chercher un ensemble de fils blancs dans la boîte de distribution.
- ▶ Pour identifier les fils de CHARGE et de LIGNE, mettre l'alimentation électrique sous tension au niveau du disjoncteur ou du fusible puis utiliser un appareil de test, afin d'identifier quel côté est connecté au fil de LIGNE (panneau électrique) par rapport au fil de CHARGE (fixation). Mettre l'alimentation hors tension de nouveau après avoir identifié les fils.
- ▶ Si un ou plusieurs fils manquent, ont des couleurs différentes ou ne peuvent pas être identifiés, arrêter l'installation et contacter un électricien certifié.

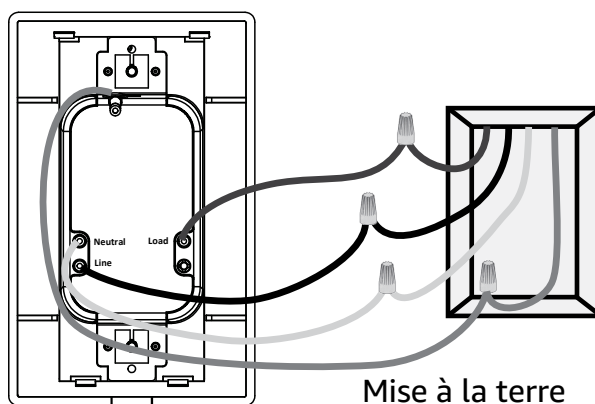
5. Déconnecter les fils de l'interrupteur existant.
6. Au besoin, couper les extrémités du fil de cuivre dénudé à 11 mm (7/16 po).

Installation de la commande intelligente de ventilateur

1. **AVERTISSEMENT** : Couper l'alimentation électrique de l'interrupteur, du disjoncteur ou fusible, puis utiliser un testeur électrique pour s'assurer que l'alimentation est coupée.
2. Extraire la plaque murale de la commande de ventilateur avec un tournevis à tête plate.



3. Vérifier que la boîte de distribution a ces fils : MISE À LA TERRE, LIGNE, NEUTRE et CHARGE.
4. Connecter le fil de MISE À LA TERRE de la boîte murale au fil de la commande de ventilateur à l'aide d'un connecteur de fil.
5. Connecter le fil de LIGNE de la boîte murale au fil de **Ligne** (chaud) de la commande de ventilateur à l'aide d'un connecteur de fil.
6. Connecter le fil NEUTRE de la boîte murale au fil **Neutre** de la commande de ventilateur à l'aide d'un connecteur de fil.
7. Connecter le fil de CHARGE de la boîte murale au fil **Charge** de la commande de ventilateur à l'aide d'un connecteur de fil.



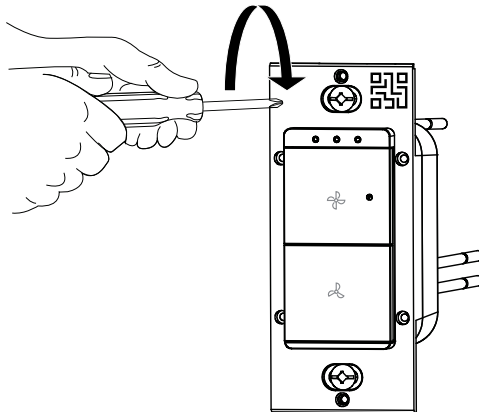
Mise à la terre

REMARQUE Insérer les fils dans le connecteur du fil puis visser dans le sens horaire. S'assurer que la connexion est bien serrée en tirant délicatement sur tous les fils un par un. S'assurer qu'il n'y a pas de fil dénudé en dessous du connecteur du fil.

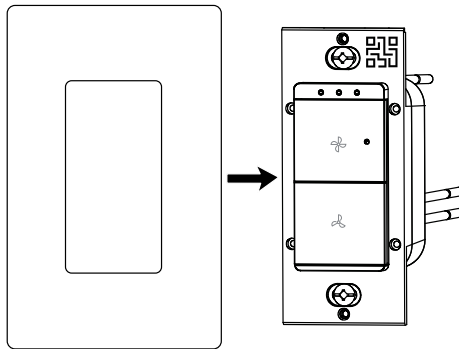
8. En tenant les connecteurs de fils, tirer chaque fil légèrement pour vérifier qu'il est bien fixé.

9. Insérer les fils dans le boîtier de l'interrupteur, puis fixer la commande de ventilateur à la boîte électrique à l'aide de deux vis.

REMARQUE Ne pas trop serrer les vis, car cela pourrait restreindre le fonctionnement de l'interrupteur.



10. Enclencher la plaque murale avant sur la commande de ventilateur.



11. Une fois que les connexions sont effectuées, activer l'alimentation au disjoncteur ou au fusible. Tester si la commande de ventilateur fonctionne. La DEL clignote en vert rapidement pendant 5 minutes pour indiquer que l'appareil est prêt à être configuré.

Installation de la commande intelligente de ventilateur avec Alexa

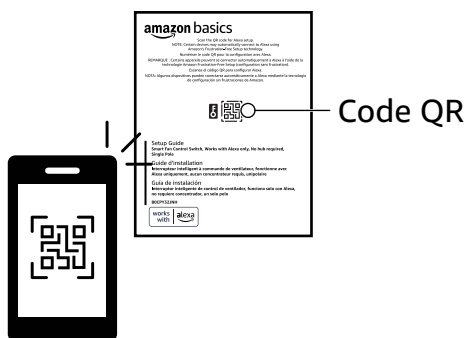
La commande intelligente de ventilateur peut être configurée avec le code QR sur le *Guide d'installation* imprimé (recommandé) ou sur le produit. Il est aussi possible d'effectuer le réglage sans un code QR.

Configuration avec le code QR du *Guide d'installation* (Recommandé)

REMARQUE Certains appareils peuvent se connecter automatiquement à Alexa à l'aide de la technologie Amazon Frustration-Free Setup (configuration sans frustration).

1. Télécharger la dernière version de l'application Alexa dans la boutique App Store et se connecter.
2. Allumer la commande de ventilateur d'Amazon Basics.
3. Dans l'application Alexa, toucher **More** (Plus) dans le menu du bas, puis toucher **Add a Device** (Ajouter un appareil).
4. Toucher l'appareil applicable, puis toucher **Amazon Basics**.
5. Suivre les étapes dans l'application Alexa afin de terminer la configuration. Quand demandé, numériser le code QR sur le *Guide d'installation* imprimé. Dans le cas où il y a plus d'une commande intelligente de ventilateur et que le code QR dans le *Guide d'installation* est numérisé, faire correspondre le numéro DSN de la commande intelligente de ventilateur avec le code QR.

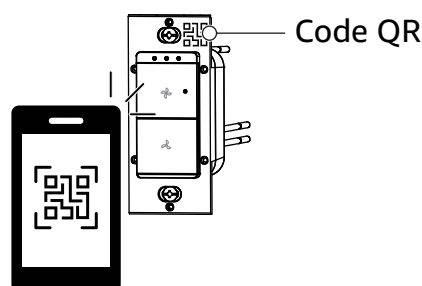
REMARQUE Ne pas numériser le code à barres sur la boîte d'emballage. Si le balayage du code à barres ne fonctionne pas, se référer à « Méthodes alternatives de configuration » à la page 21, ci-dessous.



Méthodes alternatives de configuration

Option 1 : Configuration avec le code QR sur le produit

1. Télécharger la dernière version de l'application Alexa dans la boutique App Store et se connecter.
2. Allumer la commande intelligente de ventilateur d'Amazon Basics.
3. Dans l'application Alexa, toucher **More** (Plus) dans le menu du bas, puis toucher **Add a Device** (Ajouter un appareil).
4. Toucher l'appareil applicable, puis toucher **Amazon Basics**.
5. Suivre les étapes dans l'application Alexa afin de terminer la configuration. Quand demandé, numériser le code QR sur l'appareil.



REMARQUE Ne pas numériser le code à barres sur la boîte d'emballage. Si le balayage du code à barres ne fonctionne pas ou si le Guide d'installation est égaré, se référer à l'« Option 2 : Configuration sans le code à barres », ci-dessous.

Option 2 : Configuration sans le code à barres

Utiliser ces instructions si la configuration avec le code QR ne fonctionne pas.

1. Allumer la commande intelligente de ventilateur d'Amazon Basics.
2. Dans l'application Alexa, toucher **More** (Plus) dans le menu du bas, puis toucher **Add a Device** (Ajouter un appareil).
3. Toucher l'appareil applicable, puis toucher **Amazon Basics**.
4. Quand il est demandé de balayer le code à barres, toucher **DON'T HAVE A BARCODE?** (Vous n'avez pas de code à barres?).
5. Toucher **Next**, puis suivre les instructions à l'écran afin de procéder à la configuration.

Utilisation de la commande intelligente de ventilateur

- ▶ Appuyer sur le bouton d'augmentation de la vitesse du ventilateur pour l'allumer. Le témoin lumineux s'allume lorsque le ventilateur est allumé.
- ▶ Appuyer sur le bouton d'augmentation ou de diminution de la vitesse pour augmenter ou diminuer la vitesse du ventilateur. Les témoins de la vitesse du ventilateur indiquent la vitesse du ventilateur. Voir « Identification des témoins » à la page 23 pour de plus amples informations.

Suppression de la commande intelligente du ventilateur de l'application Alexa

1. Ouvrir l'application Alexa et toucher **Devices** (Appareils) dans le menu du bas.

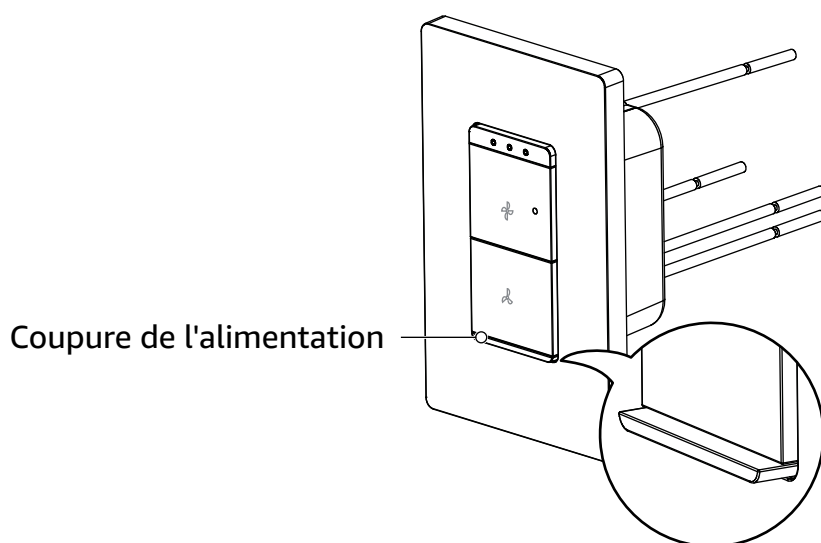
2. Sélectionner l'appareil à supprimer et toucher Réglages ⚙️ .
3. Taper sur 🗑️ pour mettre à la corbeille. La commande intelligente de ventilateur est déconnectée d'Alexa.

REMARQUE Après avoir retiré la commande intelligente de ventilateur, une réinitialisation aux paramètres d'origine de l'appareil peut être nécessaire, avant d'être connecté à un concentrateur de domicile intelligent.

Changement de ventilateur

Quand la commande du ventilateur est éteinte, une petite quantité d'électricité est toujours produite. La coupure d'alimentation déconnecte l'alimentation pour changer de ventilateur en toute sécurité. Pour changer un ventilateur :

1. Éteindre le ventilateur et effectuer une coupure de courant à la main ou en utilisant un tournevis à tête plate.



2. Changer le ventilateur.
3. Appuyer sur la coupure d'alimentation pour la réactiver.

Identification des témoins

Témoin d'état

État de la DEL	Description
La DEL clignote alternativement en rouge et en vert	La commande de ventilateur est réinitialisée aux paramètres d'origine
La DEL clignote en vert rapidement pendant 5 minutes	La commande de ventilateur est prête pour la configuration
La DEL s'allume en rouge pendant 1 minute	La commande de ventilateur n'est pas enregistrée
La DEL s'allume en vert pendant 3 secondes	La commande de ventilateur est connectée
La DEL s'allume en vert fixe et reste allumée	La commande de ventilateur est connectée et le ventilateur est arrêté
La DEL est éteinte	La commande de ventilateur est connectée et le ventilateur est en marche
La DEL clignote en rouge rapidement pendant 1 minute	La commande de ventilateur est déconnectée

Témoins de la vitesse du ventilateur

État de la DEL	Description
Toutes les DEL sont éteintes	Le ventilateur est éteint
Une DEL s'allume	Vitesse minimale
Deux DEL s'allument	Vitesse moyenne
Trois DEL s'allument	Vitesse maximale

Réinitialisation aux paramètres d'origine

- Appuyer à la fois sur le bouton d'augmentation de la vitesse et le bouton de diminution de la vitesse pendant 10 secondes jusqu'à ce que le témoin d'état clignote alternativement en rouge et en vert, puis relâcher les boutons.

Problèmes et solutions

Si la commande intelligente de ventilateur ne fonctionne pas correctement, essayer les solutions suivantes.

Problème

Il n'est pas possible d'identifier les fils NEUTRES.

Solutions

- Après avoir essayé d'identifier les fils avec toujours une incertitude, appeler un électricien certifié.
- Pour couper le courant de l'interrupteur, retirer la plaque et l'interrupteur existant, puis examiner les fils. S'il existe plusieurs fils blancs, il y a de fortes chances qu'il s'agisse de fils NEUTRES.
- Si le domicile a été construit ou rénové avant le milieu des années 80, il est possible qu'il n'y ait pas de fil NEUTRE. Essayer un autre emplacement ou appeler un électricien certifié pour toute assistance.

Problème

Il n'est pas possible d'identifier les fils de CHARGE et de LIGNE.

Solutions

- ▶ Couper le courant de l'interrupteur, retirer la plaque et l'interrupteur existant, puis réactiver le courant. Sans toucher aucune partie de l'interrupteur ni les fils existants, placer le testeur de tension au-dessus des fils noirs. Le testeur de tension clignote et émet un son lorsqu'il se trouve au-dessus du fil de LIGNE. Lorsque le testeur de tension ne s'allume pas du tout, c'est le fil de CHARGE.
- ▶ Après avoir essayé d'identifier les fils avec toujours une incertitude, appeler un électricien certifié.

Problème

Mon interrupteur intelligent de commande du ventilateur ne fonctionne pas après l'installation.

Solutions

- ▶ Vérifier que l'ensemble est sous tension.
- ▶ Vérifier d'avoir bien utilisé un fil NEUTRE pour l'installation.
- ▶ Vérifier que toutes les connexions de câbles sont correctes (CHARGE, NEUTRE, LIGNE, MISE À LA TERRE). Voir « Installation de la commande intelligente de ventilateur » à la page 17 pour de plus amples informations.
- ▶ S'assurer que la coupure de l'alimentation est bien désactivée.
- ▶ En cas de questions supplémentaires, contacter un électricien certifié.

Problème

La commande intelligente de ventilateur ne se connecte pas à Alexa.

Solutions

- ▶ Vérifier que le téléphone ou la tablette et l'application Alexa disposent de la dernière version du logiciel.
- ▶ Vérifier que le téléphone ou la tablette est dans un rayon de 10 m (32,81 pi) de la commande du ventilateur.
- ▶ Vérifier que le téléphone ou la tablette et la commande intelligente de ventilateur sont connectés sur le même réseau Wi-Fi de 2,4 GHz. Cette commande intelligente de ventilateur n'est pas compatible avec les réseaux de 5 GHz.
- ▶ En cas d'utilisation d'un routeur Wi-Fi bande et les deux signaux ont le même nom, en renommer un et essayer une reconnexion à la fréquence de réseau de 2,4 GHz.
- ▶ S'assurer de numériser le code QR fourni dans le *Guide d'installation* ou sur la commande intelligente de ventilateur.
- ▶ La commande de ventilateur est réinitialisée aux paramètres d'origine. Voir « Réinitialisation aux paramètres d'origine » à la page 23.

Spécifications

Tension d'alimentation :	120 V c.a., 60 Hz
Courant max.	1,5 A max.
Détection de la quantité d'électricité	Non pris en charge
Puissance en mode veille	≤ 1 W
Température ambiante	- 30° à 40 °C (- 22 à 104 °F)
Température de stockage	- 20° à 60 °C (- 4 à 140 °F)
Humidité de service	10 % à 90 % d'humidité relative (sans condensation)
Protocole sans fil	Wi-Fi et Bluetooth (Bluetooth ne fait que le jumelage)
Wi-Fi	2,4 GHz
Catégorie de protection	IP20
Authentification	cETLus, IDENTIFICATION FCC IC + Voc

Avis juridiques

Marques commerciales



Le logo Wi-Fi CERTIFIED™ est une marque déposée de Wi-Fi Alliance^{MD}



La marque verbale et les logos Bluetooth^{MD} sont des marques déposées appartenant à Bluetooth SIG, Inc. et l'utilisation de ces marques par Amazon.com Services LLC fait l'objet d'une licence. Les autres marques et noms commerciaux appartiennent à leurs propriétaires respectifs.

Déclaration de conformité FCC du fournisseur

Identifiant unique	BOCPY3ZJNH : Interrupteur intelligent à commande de ventilateur, fonctionne avec Alexa uniquement, aucun concentrateur requis, unipolaire d'Amazon Basics
Partie responsable	Amazon.com Services LLC.
Coordonnées du contact aux É.-U.	410 Terry Ave N. Seattle, WA 98109, États-Unis
Numéro de téléphone	(206) 266-1000

Déclaration de conformité FCC

- Cet appareil est conforme à l'article 15 du règlement de la FCC. Son fonctionnement est soumis aux deux conditions suivantes :
 - Ce périphérique ne doit pas émettre d'interférences préjudiciables, et
 - Ce périphérique doit accepter toutes les interférences reçues, y compris celles pouvant provoquer un fonctionnement préjudiciable.
- Tous changements ou modifications qui ne seraient pas expressément approuvés par les responsables des normes pourraient rendre nul le droit de l'utilisateur d'utiliser cet équipement.

Déclaration FCC sur les interférences

Cet équipement a été testé et déclaré conforme aux limitations prévues dans le cadre de la catégorie B des appareils numériques, définies par l'article 15 du règlement de la FCC. Ces limites ont été établies pour fournir une protection raisonnable contre les interférences préjudiciables lors d'une installation résidentielle. Cet équipement génère, utilise et diffuse des ondes radio et s'il n'est pas installé et utilisé conformément aux instructions en vigueur, il peut provoquer des interférences préjudiciables aux communications radio. Cependant, il n'est pas possible de garantir qu'aucune interférence ne se produira pour une installation particulière. Si cet équipement produit des interférences préjudiciables lors de réceptions radio ou télévisées, qui peuvent être détectées en éteignant puis en rallumant l'appareil, essayer de corriger l'interférence au moyen de l'une ou de plusieurs des mesures suivantes :

- ▶ réorienter ou déplacer l'antenne réceptrice;
- ▶ augmenter la distance entre l'équipement et le récepteur;
- ▶ brancher l'équipement sur la prise électrique d'un circuit différent de celui auquel le récepteur est relié;
- ▶ contacter le revendeur ou un technicien radio/télévision qualifié pour toute assistance.

Avertissement relatif aux radiofréquences : Cet appareil est considéré comme étant conforme aux exigences générales d'exposition aux radiofréquences. Cet équipement doit être installé et fonctionner à une distance minimale de 20 cm (8 po) entre le radiateur et le corps de l'utilisateur.

Déclaration d'Industrie Canada

Cet appareil numérique de classe B est conforme à la norme ICES-003(B)/NMB-003(B) du Canada.

Déclaration relative aux CNR

L'émetteur/récepteur exempt de licence contenu dans le présent appareil est conforme aux CNR d'Innovation, Sciences et Développement économique Canada applicables aux appareils radio exempts de licence.

L'exploitation est autorisée aux deux conditions suivantes :

- (1) L'appareil ne doit pas produire de brouillage;
- (2) L'appareil doit accepter tout brouillage radioélectrique subi, même si le brouillage est susceptible d'en compromettre le fonctionnement.

Commentaires et Aide

Nous aimerions connaître votre avis. Afin de vous offrir la meilleure expérience possible, n'oubliez pas de nous faire part de vos commentaires.

 amazon.ca/review/review-your-purchases#

Si vous avez besoin d'assistance concernant votre produit Amazon Basics, veuillez consulter le site web suivant.

 amazon.ca/gp/help/customer/contact-us

Índice

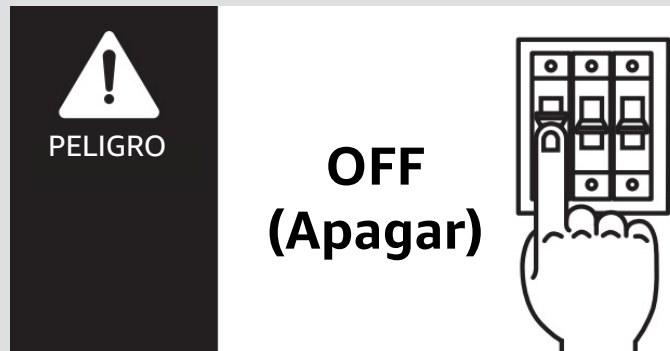
Instrucciones de seguridad	28
Contenido del paquete.....	28
Compatibilidad.....	29
Descripción del producto	29
Configuración del interruptor inteligente de control de ventilador	30
Configuración del interruptor inteligente de control de ventilador con Alexa.....	33
Métodos de configuración alternativos	34
Uso del interruptor inteligente de control de ventilador	34
Solución de problemas.....	36
No puedo identificar los cables NEUTROS.....	36
No puedo identificar los cables de CARGA y LÍNEA.....	37
Mi interruptor inteligente de control de ventilador no funciona después de la instalación.....	37
Mi interruptor inteligente de control de ventilador no se conecta a Alexa.....	37
Especificaciones	38
Avisos legales	38
Comentarios y ayuda	39

Instrucciones de seguridad

- ▶ Sustituya únicamente el interruptor existente que ajusta de forma independiente la velocidad del ventilador.
- ▶ Sólo se pueden controlar los ventiladores alimentados por CA.
- ▶ No lo utilice para controlar ventiladores que tengan controles de velocidad integrados (como ventiladores con control remoto o habilitados para Bluetooth/Wi-Fi), a menos que se retire el control integrado del ventilador de techo.
- ▶ El interruptor inteligente está diseñado para el cableado de un solo polo (una ubicación) (no es compatible con el cableado de interruptores de 3 vías/múltiples vías).
- ▶ No utilizar para controlar extractores de aire (como extractores de baños o de cocinas).
- ▶ Este control debe utilizarse con ventiladores de techo con una tensión nominal de 120 V CA, 60 Hz, carga máxima de 1.5 A.
- ▶ Se necesita un cable NEUTRO para instalar el interruptor inteligente. Si su casa se construyó o remodeló antes de mediados de los años 80, es posible que no tenga un cable NEUTRO. Pruebe en otro lugar o llame a un electricista calificado.
- ▶ Instale el control del ventilador donde haya una señal Wi-Fi potente.
- ▶ Mantenga el dispositivo móvil cerca del control del ventilador hasta que finalice la configuración.

Cableado eléctrico

⚠ PELIGRO ¡Peligro de incendio, descarga eléctrica o muerte! Apague la electricidad con el disyuntor o fusible y compruebe que no haya energía antes de la instalación.



- ▶ No instale el tomacorriente cerca de lugares húmedos como cocinas o baños.

⚠ AVISO SE REQUIEREN CABLES NEUTROS PARA LA INSTALACIÓN.

Si falta, busque un manojo de cables blancos doblados en la parte posterior de la caja de tomas. En los EE. UU., la mayoría de las casas construidas después de 1978 tienen cables neutros.

Contenido del paquete

- ▶ Interruptor inteligente de control de ventilador de pared
- ▶ Placa frontal de pared
- ▶ Conectores de cable (4)
- ▶ Tornillos (2)
- ▶ *Guía de instalación*
- ▶ *Manual de seguridad*

Compatibilidad

Este control de ventilador está diseñado para funcionar con:

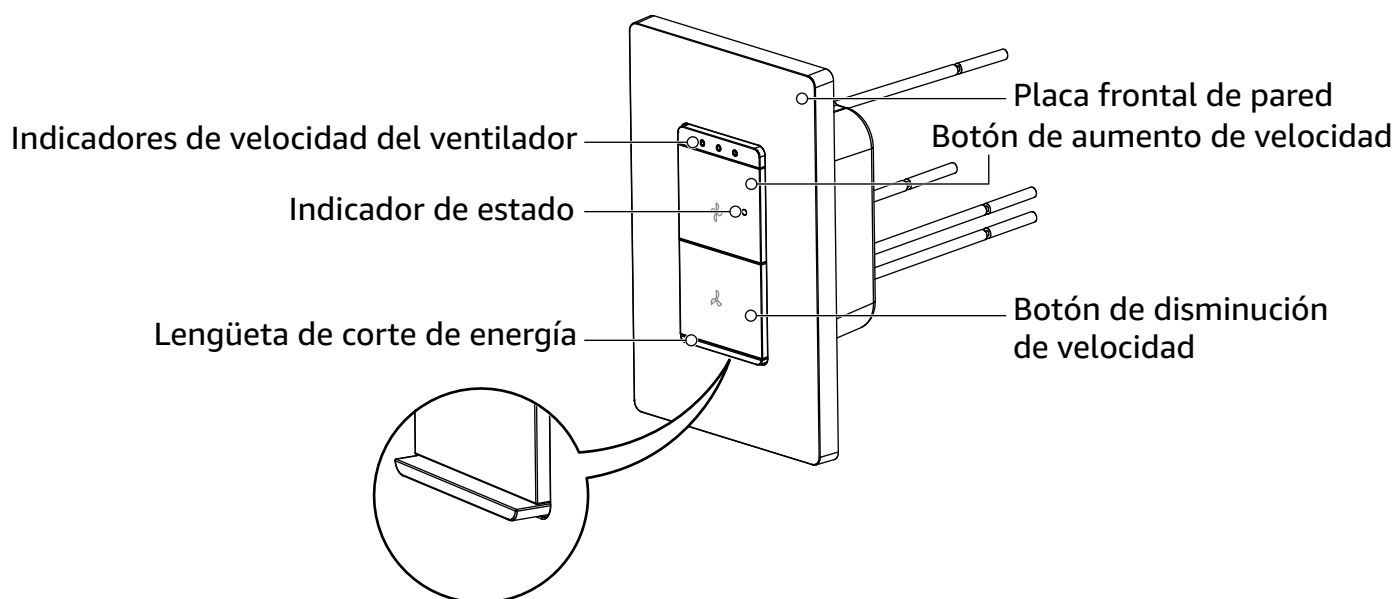
- ▶ Ventiladores de techo de CA con potencia nominal de 120 V CA, 60 Hz, carga máxima de 1.5 A.
- ▶ Cajas de interruptores que contienen un cable NEUTRO
- ▶ Cableado de un solo polo (una ubicación)
- ▶ Red Wi-Fi de 2.4 GHz
- ▶ Un dispositivo Android, iOS o Fire OS para configurar con la aplicación Alexa

Este control de ventilador **no** se usa para:

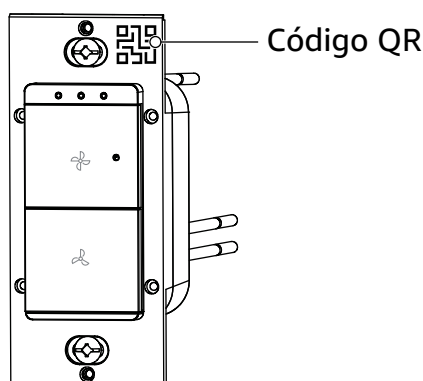
- ▶ Controlar los extractores, como los del baño o la cocina.
- ▶ Controlar ventiladores que tengan controles de velocidad integrados como ventiladores con control remoto o habilitados para Bluetooth/Wi-Fi, a menos que se retire el control integrado del ventilador de techo.
- ▶ Cableado de interruptores de 3 vías/múltiples vías
- ▶ Ventiladores de CC

Descripción del producto

Parte delantera (con placa de pared delantera)



Parte interior (sin placa delantera)



Herramientas requeridas

- ▶ Comprobador eléctrico
- ▶ Destornillador plano
- ▶ Destornillador Phillips
- ▶ Pelacables
- ▶ Alicates

Configuración del interruptor inteligente de control de ventilador

Retire el interruptor existente

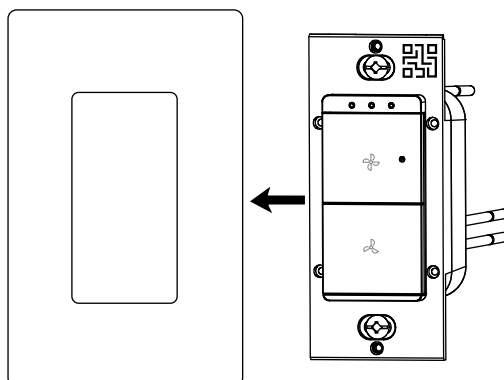
1. **ADVERTENCIA: Desconecte la electricidad del interruptor en el disyuntor o fusible y utilice un comprobador eléctrico para asegurarse de que no hay corriente.**
2. Desatornille y retire la placa de pared existente.
3. Desatornille y extraiga el receptáculo del interruptor existente.
4. Identifique los cables en la caja del interruptor:
 - ▶ TIERRA
 - ▶ LÍNEA
 - ▶ NEUTRO
 - ▶ CARGA

AVISO

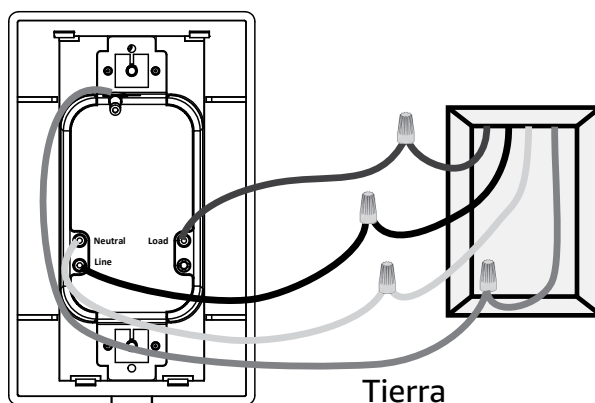
- ▶ Para verificar que tiene cables NEUTROS, busque un manojo de cables blancos en la caja del interruptor.
 - ▶ Para identificar los cables de CARGA y LÍNEA, conecte la alimentación en el disyuntor o fusible y use un comprobador para identificar qué lado está conectado a la LÍNEA (panel eléctrico) en vez de a la CARGA (aparato). Desactive la alimentación eléctrica nuevamente cuando haya terminado de identificar los cables.
 - ▶ Si falta algún cable, tiene colores diferentes o no puede identificarlo, detenga la instalación y póngase en contacto con un electricista calificado.
5. Desconecte los cables del interruptor existente.
 6. Si es necesario, recorte los extremos expuestos del cable de cobre a 11 mm (7/16 in).

Instalación del interruptor inteligente de control de ventilador

1. **ADVERTENCIA:** Desconecte la electricidad del interruptor en el disyuntor o fusible y utilice un comprobador eléctrico para asegurarse de que no hay corriente.
2. Retire la placa de pared del interruptor de control de ventilador con un destornillador plano.



3. Asegúrese de que la caja del interruptor tiene estos cables: TIERRA, LÍNEA, NEUTRO y CARGA.
4. Conecte el cable de TIERRA de la caja al cable del control del ventilador utilizando un conector de cables.
5. Conecte el cable de LÍNEA de la caja a la **Línea** (caliente) del control del ventilador mediante un conector de cables.
6. Conecte el cable NEUTRO de la caja al **Neutro** del control del ventilador mediante un conector de cables.
7. Conecte el cable de CARGA de la caja de pared al cable de **Carga** del control del ventilador utilizando un conector de cables.



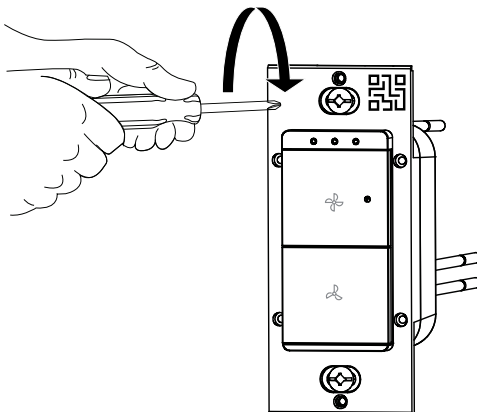
AVISO Inserte los cables en el conector y gírelos en el sentido de las agujas del reloj.

Asegúrese de que la conexión esté apretada tirando suavemente de todos los cables uno por uno. Asegúrese de que no haya ningún cable pelado debajo del conector.

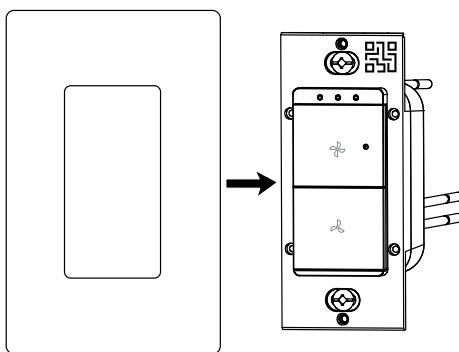
8. Sujete los conectores de los cables y tire suavemente de cada cable para asegurarse de que las conexiones son seguras.

9. Introduzca los cables en la caja del interruptor y fije el control del ventilador a la caja eléctrica con los dos tornillos.

AVISO No apriete demasiado los tornillos ya que podría impedir el funcionamiento del interruptor.



10. Encaje la placa frontal de pared en el control del ventilador.



11. Después de completar las conexiones, active la energía en el disyuntor o fusible. Compruebe para ver si el control del ventilador funciona. El LED parpadeará en verde rápidamente durante 5 minutos para indicar que el dispositivo está listo para configurarse.

Configuración del interruptor inteligente de control de ventilador con Alexa

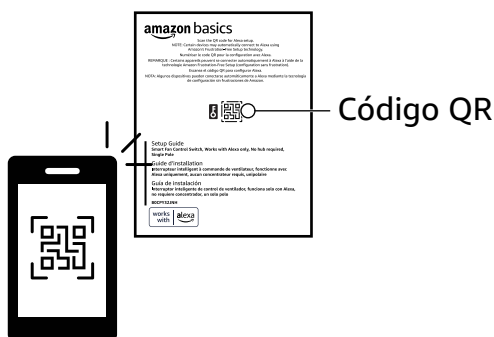
Puede configurar el interruptor inteligente de control de ventilador con el código QR impreso en su *Guía de instalación* (recomendado) o en el producto. También puedes configurarlo sin el código QR.

Configuración con el código QR de la *Guía de instalación* (recomendado)

AVISO Algunos dispositivos pueden conectarse automáticamente a Alexa mediante la tecnología de configuración sin frustraciones de Amazon.

1. Descargue la última versión de la aplicación Alexa de la tienda de aplicaciones e inicie su sesión.
2. Enciende el interruptor de control de ventilador Amazon Basics.
3. En la aplicación Alexa, toque **More** (más) en el menú inferior y toque **Add Device** (añadir dispositivo).
4. Toque el dispositivo correspondiente y toque **Amazon Basics**.
5. Siga los pasos de la aplicación Alexa para completar la configuración. Cuando se le solicite, escanee el código QR de su *Guía de instalación*. Si tiene más de un interruptor inteligente de control de ventilador y está escaneando el código QR en su *Guía de Configuración* haga coincidir el número DSN del control de ventilador inteligente con el código QR.

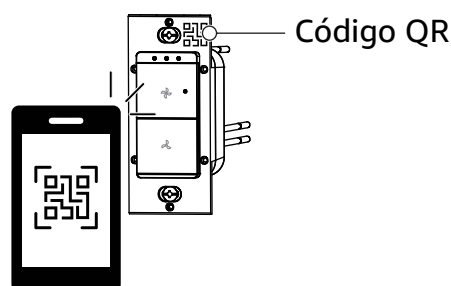
AVISO No escanee el código de barras del paquete. Si falla la lectura del código de barras, consulte "Métodos de configuración alternativos" en la página 34, a continuación.



Métodos de configuración alternativos

Opción 1: Configuración con el código QR del producto

1. Descargue la última versión de la aplicación Alexa de la tienda de aplicaciones e inicie la sesión.
2. Encienda el interruptor inteligente de control de ventilador Amazon Basics.
3. En la aplicación Alexa, toque **More** (más) en el menú inferior y toque **Add Device** (añadir dispositivo).
4. Toque el dispositivo correspondiente y toque **Amazon Basics**.
5. Siga los pasos de la aplicación Alexa para completar la configuración. Cuando se le solicite, escanee el código QR del producto.



AVISO No escanee el código de barras del paquete. Si falla el escaneo del código de barras o pierde la guía de configuración, consulte "Opción 2: Configuración sin código de barras", a continuación.

Opción 2: Configuración sin código de barras



Utilice estas instrucciones si la configuración del código QR no funciona.

1. Encienda el interruptor inteligente de control de ventilador Amazon Basics.
2. En la aplicación Alexa, toque **More** (más) en el menú inferior y toque **Add Device** (añadir dispositivo).
3. Toque el dispositivo correspondiente y toque **Amazon Basics**.
4. Cuando se le pida que escanee el código de barras, toque **DON'T HAVE A BARCODE?** (¿No tiene código de barras?)
5. Toque **Next** (siguiente) y siga las instrucciones en pantalla para completar la configuración.

Uso del interruptor inteligente de control de ventilador

- ▶ Pulse el botón de aumento de la velocidad del ventilador para encenderlo. El indicador de encendido se ilumina cuando el ventilador está encendido.
- ▶ Pulse el botón de aumento de la velocidad o el botón de disminución de la velocidad para aumentar o disminuir la velocidad del ventilador. Los indicadores de velocidad del ventilador muestran la velocidad del ventilador. Para más información, consulte "Información sobre los indicadores" en la página 36.

Cómo eliminar el interruptor inteligente de control de ventilador de la aplicación Alexa

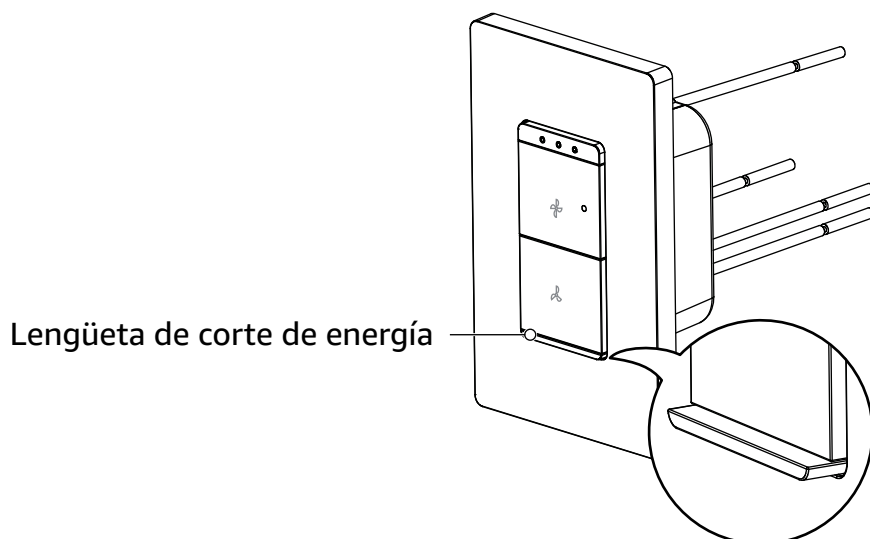
1. Abra la aplicación Alexa y pulse **Dispositivos** en el menú inferior.
2. Seleccione el dispositivo que desea eliminar y, a continuación, pulse configuración .
3. Pulse papelera . El interruptor inteligente de control de ventilador se borra de Alexa.

AVISO Después de eliminar el interruptor inteligente de control de ventilador, es posible que tenga que restablecerlo de fábrica antes de volver a conectarlo a un concentrador doméstico inteligente.

Cambio de un ventilador

Cuando el control del ventilador está apagado, sigue fluyendo una pequeña cantidad de electricidad. La lengüeta de corte de energía desconecta la alimentación para cambiar el ventilador de forma segura. Para cambiar un ventilador:

1. Apague el ventilador y, a continuación, extraiga el interruptor de alimentación con la mano o con un destornillador plano.



2. Cambie el ventilador.
3. Vuelva a introducir el interruptor.

Información sobre los indicadores

Indicador de estado

LED de estado	Descripción
El LED parpadea en rojo y verde alternativamente	El interruptor de control de ventilador está restablecido
El LED parpadea en verde rápidamente durante 5 minutos	El interruptor de control de ventilador está listo para la configuración
El LED se ilumina en rojo durante 1 minuto	El interruptor de control de ventilador no está registrado
El LED se ilumina en verde durante 3 segundos	El interruptor de control de ventilador está conectado
El LED se ilumina en verde fijo y permanece encendido	El interruptor de control de ventilador está conectado y el ventilador está apagado
LED apagado	El interruptor de control está conectado y el ventilador está encendido
El LED parpadea rápidamente en rojo durante 1 minuto	El interruptor de control de ventilador está desconectado

Indicadores de velocidad del ventilador

LED de estado	Descripción
Todos los LED están apagados	Ventilador apagado
Se enciende un LED	Velocidad mínima
Se encienden dos LED	Velocidad media
Se encienden tres LED	Velocidad máxima

Restablecimiento de los valores de fábrica

- ▶ Mantenga pulsados el botón de subir velocidad y el botón de bajar velocidad a la vez durante 10 segundos hasta que el indicador de estado parpadee en rojo y verde alternativamente y suelte los botones.

Solución de problemas

Si el interruptor inteligente de control de ventilador no funciona correctamente, pruebe las siguientes soluciones.

Problema

No puedo identificar los cables NEUTROS.

Soluciones

- ▶ Si ha intentado identificar los cables y sigue sin estar seguro, llame a un electricista calificado.
- ▶ Desconecte la alimentación de su interruptor, retire la placa frontal y el interruptor existente, y luego examine los cables. Si ve un grupo de cables blancos, es probable que sean cables NEUTROS.
- ▶ Si su casa se construyó o remodeló antes de mediados de los años 80, es posible que no tenga un cable NEUTRO. Pruebe en otro lugar o llame a un electricista.

Problema

No puedo identificar los cables de CARGA y LÍNEA.

Soluciones

- ▶ Desconecte la alimentación de su interruptor, retire la placa frontal y el interruptor existente, y vuelva a conectar la alimentación. Sin tocar ninguna parte del interruptor o los cables existentes, pase el comprobador eléctrico por encima de los cables negros. El comprobador eléctrico parpadeará y emitirá un sonido cuando se sitúe sobre el cable de LÍNEA. Cuando el comprobador de tensión no brilla en absoluto, ese es el cable de CARGA.
- ▶ Si ha intentado identificar los cables y sigue sin estar seguro, llame a un electricista calificado.

Problema

Mi interruptor inteligente de control de ventilador no funciona después de la instalación.

Soluciones

- ▶ Asegúrese de que la alimentación está conectada.
- ▶ Compruebe que ha usado un cable NEUTRO para la instalación.
- ▶ Compruebe que todas las conexiones de cables son correctas (CARGA, NEUTRO, LÍNEA, TIERRA). Para más información, consulte "Instalación del interruptor inteligente de control de ventilador" en la página 31.
- ▶ Asegúrese de que el interruptor está presionado.
- ▶ Si tiene más preguntas, póngase en contacto con un electricista calificado.

Problema

Mi interruptor inteligente de control de ventilador no se conecta a Alexa.

Soluciones

- ▶ Asegúrese de que su teléfono/tableta y la aplicación Alexa están actualizados a la última versión de software.
- ▶ Compruebe que el teléfono o la tableta están a menos de 10 m (32.81 pies) del control del ventilador.
- ▶ Asegúrese de que el teléfono/tableta y el interruptor inteligente de control de ventilador están conectados a la misma red Wi-Fi de 2.4 GHz. El interruptor inteligente de control de ventilador no es compatible con las redes de 5 GHz.
- ▶ Si tiene un enrutador WiFi doble y ambas señales de red tienen el mismo nombre, cambie el nombre de una e intente volver a conectarse a la red de 2.4 GHz.
- ▶ Asegúrese de escanear el código QR proporcionado en su *Guía de instalación* o en el interruptor inteligente de control de ventilador.
- ▶ Reestablezca de fábrica el control del ventilador. Refiérase a "Restablecimiento de los valores de fábrica" en la página 36.

Especificaciones

Tensión de alimentación	120 V CA, 60 Hz
Máx. Corriente	1.5 A máx.
Detección de cantidades eléctricas	No admitido
Energía de reserva	≤1 W
Temperatura ambiente	-30 a 40 °C (-22 a 104 °F)
Temperatura de almacenamiento	-20 a 60 °C (-4 ° a 140 °F)
Humedad de funcionamiento	10 % a 90 % HR, sin condensación
Protocolo inalámbrico	Wi-Fi + Bluetooth(Bluetooth sólo realiza el emparejamiento)
Wi-Fi	2.4 GHz
Clase de protección	IP20
Autenticación	cETLus, FCC ID IC + Voc

Avisos legales

Marcas



El logotipo Wi-Fi CERTIFIED™ es una marca registrada de Wi-Fi Alliance®.



La marca denominativa Bluetooth® y sus logotipos son marcas registradas propiedad de Bluetooth SIG, Inc. y cualquier uso de dichas marcas por parte de Amazon.com Services LLC se realiza bajo licencia. Las demás marcas y nombres comerciales pertenecen a sus respectivos propietarios.

FCC - Declaración de conformidad del proveedor

Identificador único	Interruptor inteligente de control de ventilador B0CPY3ZJNH de Amazon Basics, funciona solo con Alexa, no requiere concentrador, un solo polo
Responsable	Amazon.com Services LLC.
Información de contacto en EE.UU.	410 Terry Ave N. Seattle, WA 98109 USA
Número de teléfono	(206) 266-1000

Declaración de conformidad FCC

- Este dispositivo cumple la Parte 15 de las normas de la FCC. El funcionamiento está sujeto a las dos condiciones siguientes:
 - este dispositivo no puede causar interferencias perjudiciales, y
 - este dispositivo debe aceptar cualquier interferencia recibida, incluidas las interferencias que puedan causar un funcionamiento no deseado.
- Los cambios o modificaciones no aprobados expresamente por la parte responsable del cumplimiento podrían anular la autoridad del usuario para utilizar el equipo.

Declaración de interferencias de la FCC

Este equipo ha sido sometido a pruebas y se ha determinado que cumple los límites establecidos para los dispositivos digitales de clase B, de conformidad con la parte 15 de las normas de la FCC. Estos límites están diseñados para proporcionar una protección razonable contra interferencias perjudiciales en una instalación residencial. Este equipo genera, utiliza y puede irradiar energía de radiofrecuencia y, si no se instala y utiliza de acuerdo con las instrucciones, puede causar interferencias perjudiciales en las comunicaciones por radio. Sin embargo, no hay garantía de que no se produzcan interferencias en una instalación concreta. Si este equipo causa interferencias perjudiciales en la recepción de radio o televisión, lo que puede determinarse apagando y encendiendo el equipo, se recomienda al usuario que intente corregir la interferencia mediante una o más de las siguientes medidas:

- ▶ Vuelva a orientar o a colocar la antena receptora.
- ▶ Aumente la separación entre el equipo y el receptor.
- ▶ Conecte el equipo a un tomacorriente de un circuito distinto al que está conectado el receptor.
- ▶ Consulte al distribuidor o a un técnico experto en radio/televisión para obtener ayuda.

Declaración de advertencia de radiofrecuencia: El dispositivo ha sido evaluado para cumplir los requisitos generales de exposición a RF. Este aparato debe instalarse y utilizarse con una distancia mínima de 20 cm (8 in) entre el radiador y su cuerpo.

Aviso CI de Canadá

Este aparato digital de Clase B cumple la norma canadiense CAN ICES-003 (B)/NMB-003 (B).

Declaración RSS

Este dispositivo contiene transmisor(es)/receptor(es) exento(s) de licencia que cumple(n) con las normas RSS exentas de licencia de Innovación, Ciencia y Desarrollo Económico de Canadá.

El funcionamiento está sujeto a las dos condiciones siguientes:

- (1) Este dispositivo no puede causar interferencias.
- (2) Este dispositivo debe aceptar cualquier interferencia, incluidas las que puedan causar un funcionamiento no deseado del aparato.

Comentarios y ayuda

Nos encantaría conocer su opinión. Para asegurarnos de que ofrecemos la mejor experiencia posible al cliente, le agradecemos que escriba una opinión.

amazon.com.mx/review/review-your-purchases#

Si necesita ayuda con su producto Amazon Basics, utilice el siguiente sitio web.

amazon.com.mx/gp/help/customer/contact-us

amazon basics

amazon.com/AmazonBasics

MADE IN THAILAND
FABRIQUÉ EN THAÏLANDE
HECHO EN TAILANDIA

V03-8/24

Open Source Notice

** mbedTLS; version 2.28.1 -- https://linkprotect.cudasvc.com/url?a=https%3a%2f%2ftls.mbed.org%2f&c=E,1,PnMr13Qxkewomy_zN-4liPqKlpPPIaKue_iOMlr1g0bSgrSb6SzUaZwOoRuEWQqL-vWzhBFJvyTcK1i5BPGvt0N1AEzk5Izun9vW08U7NVOxOw,,&typo=1

** ESP-IDF; version 4.3.2 -- <https://github.com/espressif/esp-idf>

** FlashDB; version 2.1.0 -- <https://github.com/armink/FlashDB>

** Fal; version 1.0.0 -- <https://github.com/RT-Thread-packages/fal>

Apache License
Version 2.0, January 2004
<http://www.apache.org/licenses/>

TERMS AND CONDITIONS FOR USE, REPRODUCTION, AND DISTRIBUTION

1. Definitions.

“License” shall mean the terms and conditions for use, reproduction, and distribution as defined by Sections 1 through 9 of this document.

“Licensor” shall mean the copyright owner or entity authorized by the copyright owner that is granting the License.

“Legal Entity” shall mean the union of the acting entity and all other entities that control, are controlled by, or are under common control with that entity. For the purposes of this definition, “control” means (i) the power, direct or indirect, to cause the direction or management of such entity, whether by contract or otherwise, or (ii) ownership of fifty percent (50%) or more of the outstanding shares, or (iii) beneficial ownership of such entity.

“You” (or “Your”) shall mean an individual or Legal Entity exercising permissions granted by this License.

“Source” form shall mean the preferred form for making modifications, including but not limited to software source code, documentation source, and configuration files.

“Object” form shall mean any form resulting from mechanical transformation or translation of a Source form, including but not limited to compiled object code, generated documentation, and conversions to other media types.

“Work” shall mean the work of authorship, whether in Source or Object form, made available under the License, as indicated by a copyright notice that is included in or attached to the work (an example is provided in the Appendix below).

“Derivative Works” shall mean any work, whether in Source or Object form, that is based on (or derived from) the Work and for which the editorial revisions, annotations, elaborations, or other modifications represent, as a whole, an original work of authorship. For the purposes of this License, Derivative Works shall not include works that remain separable from, or merely link (or bind by name) to the interfaces of, the Work and Derivative Works thereof.

“Contribution” shall mean any work of authorship, including the original version of the Work and any modifications or additions to that Work or Derivative Works thereof, that is intentionally submitted to Licensor for inclusion in the Work by the copyright owner or by an individual or Legal Entity authorized to submit on behalf of the copyright owner. For the purposes of this definition, “submitted” means any form of electronic, verbal, or written communication sent to the Licensor or its representatives, including but not limited to communication on electronic mailing lists, source code control systems, and issue tracking systems that are managed by, or on behalf of, the Licensor for the purpose of discussing and improving the Work, but excluding communication that is conspicuously marked or otherwise designated in writing by the copyright owner as “Not a Contribution.”

“Contributor” shall mean Licensor and any individual or Legal Entity on behalf of whom a Contribution has been received by Licensor and subsequently incorporated within the Work.

2. Grant of Copyright License. Subject to the terms and conditions of this License, each Contributor hereby grants to You a perpetual, worldwide, non-exclusive, no-charge, royalty-free, irrevocable copyright license to reproduce, prepare Derivative Works of, publicly display, publicly perform, sublicense, and distribute the Work and such Derivative Works in Source or Object form.

3. Grant of Patent License. Subject to the terms and conditions of this License, each Contributor hereby grants to You a perpetual, worldwide, non-exclusive, no-charge, royalty-free, irrevocable (except as stated in this section) patent license to make, have made, use, offer to sell, sell, import, and otherwise transfer the Work, where such license applies only to those patent claims licensable by such Contributor that are necessarily infringed by their Contribution(s) alone or by combination of their Contribution(s) with the Work to which such Contribution(s) was submitted. If You institute patent litigation against any entity (including a cross-claim or counterclaim in a lawsuit) alleging that the Work or a Contribution incorporated within the Work constitutes direct or contributory patent infringement, then any patent licenses granted to You under this License for that Work shall terminate as of the date such litigation is filed.

4. Redistribution. You may reproduce and distribute copies of the Work or Derivative Works thereof in any medium, with or without modifications, and in Source or Object form, provided that You meet the following conditions:

(a) You must give any other recipients of the Work or Derivative Works a copy of this License; and

(b) You must cause any modified files to carry prominent notices stating that You changed the files; and

(c) You must retain, in the Source form of any Derivative Works that You distribute, all copyright, patent, trademark, and attribution notices from the Source form of the Work, excluding those notices that do not pertain to any part of the Derivative Works; and

(d) If the Work includes a “NOTICE” text file as part of its distribution, then any Derivative Works that You distribute must include a readable copy of the attribution notices contained within such NOTICE file, excluding those notices that do not pertain to any part of the Derivative Works, in at least one of the following places: within a NOTICE text file distributed as part of the Derivative Works; within the Source form or documentation, if provided along with the Derivative Works; or, within a display generated by the Derivative Works, if and wherever such third-party notices normally appear. The contents of the NOTICE file are for informational purposes only and do not modify the License. You may add Your own attribution notices within Derivative Works that You distribute, alongside or as an addendum to the NOTICE text from the Work, provided that such additional attribution notices cannot be construed as modifying the License.

You may add Your own copyright statement to Your modifications and may provide additional or different license terms and conditions for use, reproduction, or distribution of Your modifications, or for any such Derivative Works as a whole, provided Your use, reproduction, and distribution of the Work otherwise complies with the conditions stated in this License.

5. Submission of Contributions. Unless You explicitly state otherwise, any Contribution intentionally submitted for inclusion in the Work by You to the Licensor shall be under the terms and conditions of this License, without any additional terms or conditions. Notwithstanding the above, nothing herein shall supersede or modify the terms of any separate license agreement you may have executed with Licensor regarding such Contributions.

6. Trademarks. This License does not grant permission to use the trade names, trademarks, service marks, or product names of the Licensor, except as required for reasonable and customary use in describing the origin of the Work and reproducing the content of the NOTICE file.

7. Disclaimer of Warranty. Unless required by applicable law or agreed to in writing, Licensor provides the Work (and each Contributor provides its Contributions) on an “AS IS” BASIS, WITHOUT WARRANTIES OR CONDITIONS OF ANY KIND, either express or implied, including, without limitation, any warranties or conditions of TITLE, NON-INFRINGEMENT, MERCHANTABILITY, or FITNESS FOR A PARTICULAR PURPOSE. You are solely responsible for determining the appropriateness of using or redistributing the Work and assume any risks associated with Your exercise of permissions under this License.

8. Limitation of Liability. In no event and under no legal theory, whether in tort (including negligence), contract, or otherwise, unless required by applicable law (such as deliberate and grossly negligent acts) or agreed to in writing, shall any Contributor be liable to You for damages, including any direct, indirect, special, incidental, or consequential damages of any character arising as a result of this License or out of the use or inability to use the Work (including but not limited to damages for loss of goodwill, work stoppage, computer failure or malfunction, or any and all other commercial damages or losses), even if such Contributor has been advised of the possibility of such damages.

9. Accepting Warranty or Additional Liability. While redistributing the Work or Derivative Works thereof, You may choose to offer, and charge a fee for, acceptance of support, warranty, indemnity, or other liability obligations and/or rights consistent with this License. However, in accepting such obligations, You may act only on Your own behalf and on Your sole responsibility, not on behalf of any other Contributor, and only if You agree to indemnify, defend, and hold each Contributor harmless for any liability incurred by, or claims asserted against, such Contributor by reason of your accepting any such warranty or additional liability.

END OF TERMS AND CONDITIONS

APPENDIX: How to apply the Apache License to your work.

To apply the Apache License to your work, attach the following boilerplate notice, with the fields enclosed by brackets “[]” replaced with your own identifying information. (Don't include the brackets!) The text should be enclosed in the appropriate comment syntax for the file format. We also recommend that a file or class name and description of purpose be included on the same “printed page” as the copyright notice for easier identification within third-party archives.

Copyright [yyyy] [name of copyright owner]

Licensed under the Apache License, Version 2.0 (the “License”);
you may not use this file except in compliance with the License.
You may obtain a copy of the License at

<http://www.apache.org/licenses/LICENSE-2.0>

Unless required by applicable law or agreed to in writing, software distributed under the License is distributed on an “AS IS” BASIS, WITHOUT WARRANTIES OR CONDITIONS OF ANY KIND, either express or implied. See the License for the specific language governing permissions and limitations under the License.

* For mbedTLS see also this required NOTICE:

Copyright (C) 2006-2015, ARM Limited, All Rights Reserved

* For ESP-IDF see also this required NOTICE:

Copyrights and Licenses

Software Copyrights

All original source code in this repository is Copyright (C) 2015-2023 Espressif Systems. This source code is licensed under the Apache License 2.0 as described in the file LICENSE.

Additional third party copyrighted code is included under the following licenses.

Where source code headers specify Copyright & License information, this information takes precedence over the summaries made here.

Some examples use external components which are not Apache licensed, please check the copyright description in each example source code.

Firmware Components

These third party libraries can be included into the application (firmware) produced by ESP-IDF.

Newlib is licensed under the BSD License and is Copyright of various parties, as described in COPYING.NEWLIB .

Xtensa header files are Copyright (C) 2013 Tensilica Inc and are licensed under the MIT License as reproduced in the individual header files.

Original parts of FreeRTOS (components/freertos) are Copyright (C) 2017 https://linkprotect.cudasvc.com/url?a=https%3a%2f%2fAmazon.com&c=E,1,rcR04vML7ksKILbbC-iU83y1MzPihZaylIYhGs8mokDIZX_SlCE8LkDdyxhnroP-sF8UZls9dEOzYNtMnt6t4Daa0m8VjDNCMql-m89LW-1cNDCX1Fo7sXji&typo=1, Inc. or its affiliates are licensed under the MIT License, as described in license.txt .

Original parts of LWIP (components/lwip) are Copyright (C) 2001, 2002 Swedish Institute of Computer Science and are licensed under the BSD License as described in COPYING file .

wpa_supplicant Copyright (c) 2003-2022 Jouni Malinen <j@w1.fi> and contributors and licensed under the BSD license.

Fast PBKDF2 Copyright (c) 2015 Joseph Burr-Pixton and licensed under CC0 Public Domain Dedication license.

FreeBSD net80211 Copyright (c) 2004-2008 Sam Leffler, Errno Consulting and licensed under the BSD license.

argtable3 argument parsing library Copyright (C) 1998-2001,2003-2011,2013 Stewart Heitmann and licensed under 3-clause BSD license. argtable3 also includes the following software components. For details, please see argtable3 LICENSE file .

C Hash Table library, Copyright (c) 2002, Christopher Clark and licensed under 3-clause BSD license.

The Better String library, Copyright (c) 2014, Paul Hsieh and licensed under 3-clause BSD license.

TCL library, Copyright the Regents of the University of California, Sun Microsystems, Inc., Scriptics Corporation, ActiveState Corporation and other parties, and licensed under TCL/TK License.

linenoise line editing library Copyright (c) 2010-2014 Salvatore Sanfilippo, Copyright (c) 2010-2013 Pieter Noordhuis, licensed under 2-clause BSD license.

FatFS library, Copyright (C) 2017 ChaN, is licensed under a BSD-style license .

cJSON library, Copyright (c) 2009-2017 Dave Gamble and cJSON contributors, is licensed under MIT license as described in LICENSE file .

micro-ecc library, Copyright (c) 2014 Kenneth MacKay, is licensed under 2-clause BSD license.

Mbed TLS library, Copyright (C) 2006-2018 ARM Limited, is licensed under Apache License 2.0 as described in LICENSE file .

SPIFFS library, Copyright (c) 2013-2017 Peter Andersson, is licensed under MIT license as described in LICENSE file .

SD/MMC driver is derived from OpenBSD SD/MMC driver, Copyright (c) 2006 Uwe Stuehler, and is licensed under BSD license.

ESP-MQTT MQTT Package (contiki-mqtt) - Copyright (c) 2014, Stephen Robinson, MQTT-ESP - Tuan PM <tuanpm at live dot com> is licensed under Apache License 2.0 as described in LICENSE file .

BLE Mesh is adapted from Zephyr Project, Copyright (c) 2017-2018 Intel Corporation and licensed under Apache License 2.0.

mynewt-nimble Apache Mynewt NimBLE, Copyright 2015-2018, The Apache Software Foundation, is licensed under Apache License 2.0 as described in LICENSE file .

TLSF allocator Two Level Segregated Fit memory allocator, Copyright (c) 2006-2016, Matthew Conte, and licensed under the BSD 3-clause license.

openthread, Copyright (c) The OpenThread Authors, is licensed under BSD License as described in LICENSE file .

UBSAN runtime — Copyright (c) 2016, Linaro Limited and Jiří Závěručky, licensed under the BSD 2-clause license.

HTTP Parser Based on src/http/nginx_http_parse.c from NGINX copyright Igor Sysoev. Additional changes are licensed under the same terms as NGINX and Joyent, Inc. and other Node contributors. For details please check LICENSE file.

SEGGER SystemView target-side library, Copyright (c) 1995-2021 SEGGER Microcontroller GmbH, is licensed under BSD 1-clause license.

Documentation

HTML version of the ESP-IDF Programming Guide uses the Sphinx theme sphinx_idf_theme, which is Copyright (c) 2013-2020 Dave Snider, Read the Docs, Inc. & contributors, and Espressif Systems (Shanghai) CO., LTD. It is based on sphinx_rtd_theme. Both are licensed under MIT license.

ROM Source Code Copyrights

Espressif SoCs mask ROM hardware includes binaries compiled from portions of the following third party software:

Newlib , licensed under the BSD License and is Copyright of various parties, as described in COPYING.NEWLIB .

Xtensa libhal, Copyright (c) Tensilica Inc and licensed under the MIT license (see below).

TinyBasic Plus, Copyright Mike Field & Scott Lawrence and licensed under the MIT license (see below).

miniz, by Rich Geldreich - placed into the public domain.

wpa_supplicant Copyright (c) 2003-2022 Jouni Malinen <j@w1.fi> and contributors and licensed under the BSD license.

TJpgDec Copyright (C) 2011, ChaN, all right reserved. See below for license.

Parts of Zephyr RTOS USB stack:
DesignWare USB device driver Copyright (c) 2016 Intel Corporation and licensed under Apache 2.0 license.

Generic USB device driver Copyright (c) 2006 Bertrik Sikken (bertrik@sikken.nl), 2016 Intel Corporation and licensed under BSD 3-clause license.

USB descriptors functionality Copyright (c) 2017 PHYTEC Messtechnik GmbH, 2017-2018 Intel Corporation and licensed under Apache 2.0 license.

USB DFU class driver Copyright (c) 2015-2016 Intel Corporation, 2017 PHYTEC Messtechnik GmbH and licensed under BSD 3-clause license.

USB CDC ACM class driver Copyright (c) 2015-2016 Intel Corporation and licensed under Apache 2.0 license.

Xtensa libhal MIT License
Copyright (c) 2003, 2006, 2010 Tensilica Inc.

Permission is hereby granted, free of charge, to any person obtaining a copy of this software and associated documentation files (the "Software"), to deal in

the Software without restriction, including without limitation the rights to use, copy, modify, merge, publish, distribute, sublicense, and/or sell copies of the Software, and to permit persons to whom the Software is furnished to do so, subject to the following conditions:

The above copyright notice and this permission notice shall be included in all copies or substantial portions of the Software.

THE SOFTWARE IS PROVIDED "AS IS", WITHOUT WARRANTY OF ANY KIND, EXPRESS OR IMPLIED, INCLUDING BUT NOT LIMITED TO THE WARRANTIES OF MERCHANTABILITY, FITNESS FOR A PARTICULAR PURPOSE AND NONINFRINGEMENT. IN NO EVENT SHALL THE AUTHORS OR COPYRIGHT HOLDERS BE LIABLE FOR ANY CLAIM, DAMAGES OR OTHER LIABILITY, WHETHER IN AN ACTION OF CONTRACT, TORT OR OTHERWISE, ARISING FROM, OUT OF OR IN CONNECTION WITH THE SOFTWARE OR THE USE OR OTHER DEALINGS IN THE SOFTWARE.

TinyBasic Plus MIT License
Copyright (c) 2012-2013

Permission is hereby granted, free of charge, to any person obtaining a copy of this software and associated documentation files (the "Software"), to deal in the Software without restriction, including without limitation the rights to use, copy, modify, merge, publish, distribute, sublicense, and/or sell copies of the Software, and to permit persons to whom the Software is furnished to do so, subject to the following conditions:

The above copyright notice and this permission notice shall be included in all copies or substantial portions of the Software.

THE SOFTWARE IS PROVIDED "AS IS", WITHOUT WARRANTY OF ANY KIND, EXPRESS OR IMPLIED, INCLUDING BUT NOT LIMITED TO THE WARRANTIES OF MERCHANTABILITY, FITNESS FOR A PARTICULAR PURPOSE AND NONINFRINGEMENT. IN NO EVENT SHALL THE AUTHORS OR COPYRIGHT HOLDERS BE LIABLE FOR ANY CLAIM, DAMAGES OR OTHER LIABILITY, WHETHER IN AN ACTION OF CONTRACT, TORT OR OTHERWISE, ARISING FROM, OUT OF OR IN CONNECTION WITH THE SOFTWARE OR THE USE OR OTHER DEALINGS IN THE SOFTWARE.

TJpgDec License

TJpgDec - Tiny JPEG Decompressor R0.01 (C) ChaN, 2011 The TJpgDec is a generic JPEG decompressor module for tiny embedded systems. This is a free software that opened for education, research and commercial developments under license policy of following terms.

Copyright (C) 2011, ChaN, all right reserved.

The TJpgDec module is a free software and there is NO WARRANTY.

No restriction on use. You can use, modify and redistribute it for personal, non-profit or commercial products UNDER YOUR RESPONSIBILITY.

Redistributions of source code must retain the above copyright notice.

* For FlashDB see also this required NOTICE:

Copyright (c) 2021, Armink, <armink.ztl@gmail.com>
Copyright (c) 2020, Armink, <armink.ztl@gmail.com>
Copyright (c) 2016-2018, Armink, <armink.ztl@gmail.com>
Copyright (c) 2020 STMicroelectronics.
Copyright (c) 2018 STMicroelectronics.
Copyright (c) 2017 STMicroelectronics.
Copyright (c) 2016 STMicroelectronics.
Copyright (c) 2009-2018 Arm Limited. All rights reserved.
Copyright (c) 2017-2018 Arm Limited. All rights reserved.
Copyright (c) 2022, kaans, <https://github.com/kaans>
Copyright (c) 2006-2018, RT-Thread Development Team
Copyright (c) 2006-2020, RT-Thread Development Team
Copyright (c) 2022, Spider, <spider@spider.vc>

* For Fal see also this required NOTICE:

Copyright (c) 2006-2018, RT-Thread Development Team

** uthash; version 2.1.0 -- https://linkprotect.cudasvc.com/url?a=https%3a%2f%2ftroydhanson.github.io%2futhash%2f&c=E,1,XS_C7bGvNJYwOLI9Z-aN4KjDOGwwVKMXcZPYq3ToZHdiw6EU_x-w4NjGxfCKfcTfLGJ-T7BR26le9lqeSM_hfFUz1uoQY2l0D44benhBkyXfC394HFJsrTyMPp0,&typo=1
Copyright (c) 2005-2014, Troy D. Hanson <http://troydhanson.github.com/uthash/>
All rights reserved.

Redistribution and use in source and binary forms, with or without modification, are permitted provided that the following conditions are met:

* Redistributions of source code must retain the above copyright notice, this list of conditions and the following disclaimer.

THIS SOFTWARE IS PROVIDED BY THE COPYRIGHT HOLDERS AND CONTRIBUTORS "AS IS" AND ANY EXPRESS OR IMPLIED WARRANTIES, INCLUDING, BUT NOT LIMITED TO, THE IMPLIED WARRANTIES OF MERCHANTABILITY AND FITNESS FOR A PARTICULAR PURPOSE ARE DISCLAIMED. IN NO EVENT SHALL THE COPYRIGHT OWNER OR CONTRIBUTORS BE LIABLE FOR ANY DIRECT, INDIRECT, INCIDENTAL, SPECIAL, EXEMPLARY, OR CONSEQUENTIAL DAMAGES (INCLUDING, BUT NOT LIMITED TO, PROCUREMENT OF SUBSTITUTE GOODS OR SERVICES; LOSS OF USE, DATA, OR PROFITS; OR BUSINESS INTERRUPTION) HOWEVER CAUSED AND ON ANY THEORY OF LIABILITY, WHETHER IN CONTRACT, STRICT LIABILITY, OR TORT (INCLUDING NEGLIGENCE OR OTHERWISE) ARISING IN ANY WAY OUT OF THE USE OF THIS SOFTWARE, EVEN IF ADVISED OF THE POSSIBILITY OF SUCH DAMAGE.

** lwIP; version v2.0.3 -- https://linkprotect.cudasvc.com/url?a=http%3a%2f%2fsavannah.nongnu.org%2fprojects%2flwip%2f&c=E,1,4xq4_NCo-36suoOGxwKjNDoQ8mqRr1RK3r7MubtRC1d8Z5gNsFbLqPIAhaXT_ASKJ8IR9wL85fkpIX13A7sDZz9OyRtEJH8Hc8zc_7dt_B5AKJn8dGp7g_19Fg,,&typo=1
Copyright (c) 2001, 2002 Swedish Institute of Computer Science.

Redistribution and use in source and binary forms, with or without modification, are permitted provided that the following conditions are met:

1. Redistributions of source code must retain the above copyright notice, this list of conditions and the following disclaimer.
2. Redistributions in binary form must reproduce the above copyright notice, this list of conditions and the following disclaimer in the documentation and/or other materials provided with the distribution.
3. The name of the author may not be used to endorse or promote products derived from this software without specific prior written permission.

THIS SOFTWARE IS PROVIDED BY THE AUTHOR ``AS IS AND ANY EXPRESS OR IMPLIED WARRANTIES, INCLUDING, BUT NOT LIMITED TO, THE IMPLIED WARRANTIES OF MERCHANTABILITY AND FITNESS FOR A PARTICULAR PURPOSE ARE DISCLAIMED. IN NO EVENT SHALL THE AUTHOR BE LIABLE FOR ANY DIRECT, INDIRECT, INCIDENTAL, SPECIAL, EXEMPLARY, OR CONSEQUENTIAL DAMAGES (INCLUDING, BUT NOT LIMITED TO, PROCUREMENT OF SUBSTITUTE GOODS OR SERVICES; LOSS OF USE, DATA, OR PROFITS; OR BUSINESS INTERRUPTION) HOWEVER CAUSED AND ON ANY THEORY OF LIABILITY, WHETHER IN CONTRACT, STRICT LIABILITY, OR TORT (INCLUDING NEGLIGENCE OR OTHERWISE) ARISING IN ANY WAY OUT OF THE USE OF THIS SOFTWARE, EVEN IF ADVISED OF THE POSSIBILITY OF SUCH DAMAGE.

** newlib; version 2.2.0 -- <https://github.com/espressif/esp-idf/blob/v4.3.2/components/newlib/COPYING.NEWLIB>

The newlib subdirectory is a collection of software from several sources.

Each file may have its own copyright/license that is embedded in the source file. Unless otherwise noted in the body of the source file(s), the following copyright notices will apply to the contents of the newlib subdirectory:

(1) Red Hat Incorporated

Copyright (c) 1994-2009 Red Hat, Inc. All rights reserved.

This copyrighted material is made available to anyone wishing to use, modify, copy, or redistribute it subject to the terms and conditions of the BSD License. This program is distributed in the hope that it will be useful, but WITHOUT ANY WARRANTY expressed or implied, including the implied warranties of MERCHANTABILITY or FITNESS FOR A PARTICULAR PURPOSE. A copy of this license is available at <http://www.opensource.org/licenses>. Any Red Hat trademarks that are incorporated in the source code or documentation are not subject to the BSD License and may only be used or replicated with the express permission of Red Hat, Inc.

(2) University of California, Berkeley

Copyright (c) 1981-2000 The Regents of the University of California. All rights reserved.

Redistribution and use in source and binary forms, with or without modification, are permitted provided that the following conditions are met:

- * Redistributions of source code must retain the above copyright notice, this list of conditions and the following disclaimer.
- * Redistributions in binary form must reproduce the above copyright notice, this list of conditions and the following disclaimer in the documentation and/or other materials provided with the distribution.
- * Neither the name of the University nor the names of its contributors may be used to endorse or promote products derived from this software without specific prior written permission.

THIS SOFTWARE IS PROVIDED BY THE COPYRIGHT HOLDERS AND CONTRIBUTORS "AS IS" AND ANY EXPRESS OR IMPLIED WARRANTIES, INCLUDING, BUT NOT LIMITED TO, THE IMPLIED WARRANTIES OF MERCHANTABILITY AND FITNESS FOR A PARTICULAR PURPOSE ARE DISCLAIMED.

IN NO EVENT SHALL THE COPYRIGHT OWNER OR CONTRIBUTORS BE LIABLE FOR ANY DIRECT, INDIRECT, INCIDENTAL, SPECIAL, EXEMPLARY, OR CONSEQUENTIAL DAMAGES (INCLUDING, BUT NOT LIMITED TO, PROCUREMENT OF SUBSTITUTE GOODS OR SERVICES; LOSS OF USE, DATA, OR PROFITS; OR BUSINESS INTERRUPTION) HOWEVER CAUSED AND ON ANY THEORY OF LIABILITY, WHETHER IN CONTRACT, STRICT LIABILITY, OR TORT (INCLUDING NEGLIGENCE OR OTHERWISE) ARISING IN ANY WAY OUT OF THE USE OF THIS SOFTWARE, EVEN IF ADVISED OF THE POSSIBILITY OF SUCH DAMAGE.

(3) David M. Gay (AT&T 1991, Lucent 1998)

The author of this software is David M. Gay.

Copyright (c) 1991 by AT&T.

Permission to use, copy, modify, and distribute this software for any purpose without fee is hereby granted, provided that this entire notice is included in all copies of any software which is or includes a copy or modification of this software and in all copies of the supporting documentation for such software.

THIS SOFTWARE IS BEING PROVIDED "AS IS", WITHOUT ANY EXPRESS OR IMPLIED WARRANTY. IN PARTICULAR, NEITHER THE AUTHOR NOR AT&T MAKES ANY REPRESENTATION OR WARRANTY OF ANY KIND CONCERNING THE MERCHANTABILITY OF THIS SOFTWARE OR ITS FITNESS FOR ANY PARTICULAR PURPOSE.

The author of this software is David M. Gay.

Copyright (C) 1998-2001 by Lucent Technologies
All Rights Reserved

Permission to use, copy, modify, and distribute this software and its documentation for any purpose and without fee is hereby granted, provided that the above copyright notice appear in all copies and that both that the copyright notice and this permission notice and warranty disclaimer appear in supporting documentation, and that the name of Lucent or any of its entities not be used in advertising or publicity pertaining to distribution of the software without specific, written prior permission.

LUCENT DISCLAIMS ALL WARRANTIES WITH REGARD TO THIS SOFTWARE, INCLUDING ALL IMPLIED WARRANTIES OF MERCHANTABILITY AND FITNESS. IN NO EVENT SHALL LUCENT OR ANY OF ITS ENTITIES BE LIABLE FOR ANY SPECIAL, INDIRECT OR CONSEQUENTIAL DAMAGES OR ANY DAMAGES WHATSOEVER RESULTING FROM LOSS OF USE, DATA OR PROFITS, WHETHER IN AN ACTION OF CONTRACT, NEGLIGENCE OR OTHER TORTIOUS ACTION, ARISING OUT OF OR IN CONNECTION WITH THE USE OR PERFORMANCE OF THIS SOFTWARE.

(4) Advanced Micro Devices

Copyright 1989, 1990 Advanced Micro Devices, Inc.

This software is the property of Advanced Micro Devices, Inc (AMD) which specifically grants the user the right to modify, use and distribute this software provided this notice is not removed or altered. All other rights are reserved by AMD.

AMD MAKES NO WARRANTY OF ANY KIND, EXPRESS OR IMPLIED, WITH REGARD TO THIS SOFTWARE. IN NO EVENT SHALL AMD BE LIABLE FOR INCIDENTAL OR CONSEQUENTIAL DAMAGES IN CONNECTION WITH OR ARISING FROM THE FURNISHING, PERFORMANCE, OR USE OF THIS SOFTWARE.

So that all may benefit from your experience, please report any problems or suggestions about this software to the 29K Technical Support Center at 800-29-29-AMD (800-292-9263) in the USA, or 0800-89-1131 in the UK, or 0031-11-1129 in Japan, toll free. The direct dial number is 512-462-4118.

Advanced Micro Devices, Inc.
29K Support Products
Mail Stop 573
5900 E. Ben White Blvd.
Austin, TX 78741
800-292-9263

(5)

(6)

(7) Sun Microsystems

Copyright (C) 1993 by Sun Microsystems, Inc. All rights reserved.

Developed at SunPro, a Sun Microsystems, Inc. business.
Permission to use, copy, modify, and distribute this software is freely granted, provided that this notice is preserved.

(8) Hewlett Packard

(c) Copyright 1986 HEWLETT-PACKARD COMPANY

To anyone who acknowledges that this file is provided "AS IS" without any express or implied warranty:

permission to use, copy, modify, and distribute this file for any purpose is hereby granted without fee, provided that the above copyright notice and this notice appears in all copies, and that the name of Hewlett-Packard Company not be used in advertising or publicity pertaining to distribution of the software without specific, written prior permission. Hewlett-Packard Company makes no representations about the suitability of this software for any purpose.

(9) Hans-Peter Nilsson

Copyright (C) 2001 Hans-Peter Nilsson

Permission to use, copy, modify, and distribute this software is freely granted, provided that the above copyright notice, this notice and the following disclaimer are preserved with no changes.

THIS SOFTWARE IS PROVIDED ``AS IS'' AND WITHOUT ANY EXPRESS OR IMPLIED WARRANTIES, INCLUDING, WITHOUT LIMITATION, THE IMPLIED WARRANTIES OF MERCHANTABILITY AND FITNESS FOR A PARTICULAR PURPOSE.

(10) Stephane Carrez (m68hc11-elf/m68hc12-elf targets only)

Copyright (C) 1999, 2000, 2001, 2002 Stephane Carrez (stcarrez@nerim.fr)

The authors hereby grant permission to use, copy, modify, distribute, and license this software and its documentation for any purpose, provided that existing copyright notices are retained in all copies and that this notice is included verbatim in any distributions. No written agreement, license, or royalty fee is required for any of the authorized uses. Modifications to this software may be copyrighted by their authors and need not follow the licensing terms described here, provided that the new terms are clearly indicated on the first page of each file where they apply.

(11) Christopher G. Demetriou

Copyright (c) 2001 Christopher G. Demetriou
All rights reserved.

Redistribution and use in source and binary forms, with or without modification, are permitted provided that the following conditions are met:

1. Redistributions of source code must retain the above copyright notice, this list of conditions and the following disclaimer.
2. Redistributions in binary form must reproduce the above copyright notice, this list of conditions and the following disclaimer in the documentation and/or other materials provided with the distribution.
3. The name of the author may not be used to endorse or promote products derived from this software without specific prior written permission.

THIS SOFTWARE IS PROVIDED BY THE AUTHOR "AS IS" AND ANY EXPRESS OR IMPLIED WARRANTIES, INCLUDING, BUT NOT LIMITED TO, THE IMPLIED WARRANTIES OF MERCHANTABILITY AND FITNESS FOR A PARTICULAR PURPOSE ARE DISCLAIMED. IN NO EVENT SHALL THE AUTHOR BE LIABLE FOR ANY DIRECT, INDIRECT, INCIDENTAL, SPECIAL, EXEMPLARY, OR CONSEQUENTIAL DAMAGES (INCLUDING, BUT NOT LIMITED TO, PROCUREMENT OF SUBSTITUTE GOODS OR SERVICES; LOSS OF USE, DATA, OR PROFITS; OR BUSINESS INTERRUPTION) HOWEVER CAUSED AND ON ANY THEORY OF LIABILITY, WHETHER IN CONTRACT, STRICT LIABILITY, OR TORT (INCLUDING NEGLIGENCE OR OTHERWISE) ARISING IN ANY WAY OUT OF THE USE OF THIS SOFTWARE, EVEN IF ADVISED OF THE POSSIBILITY OF SUCH DAMAGE.

(12) SuperH, Inc.

Copyright 2002 SuperH, Inc. All rights reserved

This software is the property of SuperH, Inc (SuperH) which specifically grants the user the right to modify, use and distribute this software provided this notice is not removed or altered. All other rights are reserved by SuperH.

SUPERH MAKES NO WARRANTY OF ANY KIND, EXPRESS OR IMPLIED, WITH REGARD TO THIS SOFTWARE. IN NO EVENT SHALL SUPERH BE LIABLE FOR INDIRECT, SPECIAL, INCIDENTAL OR CONSEQUENTIAL DAMAGES IN CONNECTION WITH OR ARISING FROM THE FURNISHING, PERFORMANCE, OR USE OF THIS SOFTWARE.

So that all may benefit from your experience, please report any problems or suggestions about this software to the SuperH Support Center via e-mail at softwaresupport@superh.com .

SuperH, Inc.
405 River Oaks Parkway
San Jose
CA 95134
USA

(13) Royal Institute of Technology

Copyright (c) 1999 Kungliga Tekniska Högskolan
(Royal Institute of Technology, Stockholm, Sweden).
All rights reserved.

Redistribution and use in source and binary forms, with or without modification, are permitted provided that the following conditions are met:

1. Redistributions of source code must retain the above copyright notice, this list of conditions and the following disclaimer.
2. Redistributions in binary form must reproduce the above copyright notice, this list of conditions and the following disclaimer in the documentation and/or other materials provided with the distribution.
3. Neither the name of KTH nor the names of its contributors may be used to endorse or promote products derived from this software without specific prior written permission.

THIS SOFTWARE IS PROVIDED BY KTH AND ITS CONTRIBUTORS ``AS IS'' AND ANY EXPRESS OR IMPLIED WARRANTIES, INCLUDING, BUT NOT LIMITED TO, THE IMPLIED WARRANTIES OF MERCHANTABILITY AND FITNESS FOR A PARTICULAR PURPOSE ARE DISCLAIMED. IN NO EVENT SHALL KTH OR ITS CONTRIBUTORS BE LIABLE FOR ANY DIRECT, INDIRECT, INCIDENTAL, SPECIAL, EXEMPLARY, OR CONSEQUENTIAL DAMAGES (INCLUDING, BUT NOT LIMITED TO, PROCUREMENT OF SUBSTITUTE GOODS OR SERVICES; LOSS OF USE, DATA, OR PROFITS; OR BUSINESS INTERRUPTION) HOWEVER CAUSED AND ON ANY THEORY OF LIABILITY, WHETHER IN CONTRACT, STRICT LIABILITY, OR TORT (INCLUDING NEGLIGENCE OR OTHERWISE) ARISING IN ANY WAY OUT OF THE USE OF THIS SOFTWARE, EVEN IF ADVISED OF THE POSSIBILITY OF SUCH DAMAGE.

(14) Alexey Zelkin

Copyright (c) 2000, 2001 Alexey Zelkin <phantom@FreeBSD.org>
All rights reserved.

Redistribution and use in source and binary forms, with or without modification, are permitted provided that the following conditions are met:

1. Redistributions of source code must retain the above copyright notice, this list of conditions and the following disclaimer.
2. Redistributions in binary form must reproduce the above copyright notice, this list of conditions and the following disclaimer in the documentation and/or other materials provided with the distribution.

THIS SOFTWARE IS PROVIDED BY THE AUTHOR AND CONTRIBUTORS ``AS IS'' AND ANY EXPRESS OR IMPLIED WARRANTIES, INCLUDING, BUT NOT LIMITED TO, THE IMPLIED WARRANTIES OF MERCHANTABILITY AND FITNESS FOR A PARTICULAR PURPOSE ARE DISCLAIMED. IN NO EVENT SHALL THE AUTHOR OR CONTRIBUTORS BE LIABLE FOR ANY DIRECT, INDIRECT, INCIDENTAL, SPECIAL, EXEMPLARY, OR CONSEQUENTIAL DAMAGES (INCLUDING, BUT NOT LIMITED TO, PROCUREMENT OF SUBSTITUTE GOODS OR SERVICES; LOSS OF USE, DATA, OR PROFITS; OR BUSINESS INTERRUPTION)

HOWEVER CAUSED AND ON ANY THEORY OF LIABILITY, WHETHER IN CONTRACT, STRICT LIABILITY, OR TORT (INCLUDING NEGLIGENCE OR OTHERWISE) ARISING IN ANY WAY OUT OF THE USE OF THIS SOFTWARE, EVEN IF ADVISED OF THE POSSIBILITY OF SUCH DAMAGE.

(15) Andrey A. Chernov

Copyright (C) 1997 by Andrey A. Chernov, Moscow, Russia.
All rights reserved.

Redistribution and use in source and binary forms, with or without modification, are permitted provided that the following conditions are met:

1. Redistributions of source code must retain the above copyright notice, this list of conditions and the following disclaimer.
2. Redistributions in binary form must reproduce the above copyright notice, this list of conditions and the following disclaimer in the documentation and/or other materials provided with the distribution.

THIS SOFTWARE IS PROVIDED BY THE AUTHOR ``AS IS'' AND ANY EXPRESS OR IMPLIED WARRANTIES, INCLUDING, BUT NOT LIMITED TO, THE IMPLIED WARRANTIES OF MERCHANTABILITY AND FITNESS FOR A PARTICULAR PURPOSE ARE DISCLAIMED. IN NO EVENT SHALL THE REGENTS OR CONTRIBUTORS BE LIABLE FOR ANY DIRECT, INDIRECT, INCIDENTAL, SPECIAL, EXEMPLARY, OR CONSEQUENTIAL DAMAGES (INCLUDING, BUT NOT LIMITED TO, PROCUREMENT OF SUBSTITUTE GOODS OR SERVICES; LOSS OF USE, DATA, OR PROFITS; OR BUSINESS INTERRUPTION) HOWEVER CAUSED AND ON ANY THEORY OF LIABILITY, WHETHER IN CONTRACT, STRICT LIABILITY, OR TORT (INCLUDING NEGLIGENCE OR OTHERWISE) ARISING IN ANY WAY OUT OF THE USE OF THIS SOFTWARE, EVEN IF ADVISED OF THE POSSIBILITY OF SUCH DAMAGE.

(16) FreeBSD

Copyright (c) 1997-2002 FreeBSD Project.
All rights reserved.

Redistribution and use in source and binary forms, with or without modification, are permitted provided that the following conditions are met:

1. Redistributions of source code must retain the above copyright notice, this list of conditions and the following disclaimer.
2. Redistributions in binary form must reproduce the above copyright notice, this list of conditions and the following disclaimer in the documentation and/or other materials provided with the distribution.

THIS SOFTWARE IS PROVIDED BY THE AUTHOR AND CONTRIBUTORS ``AS IS'' AND ANY EXPRESS OR IMPLIED WARRANTIES, INCLUDING, BUT NOT LIMITED TO, THE IMPLIED WARRANTIES OF MERCHANTABILITY AND FITNESS FOR A PARTICULAR PURPOSE ARE DISCLAIMED. IN NO EVENT SHALL THE AUTHOR OR CONTRIBUTORS BE LIABLE FOR ANY DIRECT, INDIRECT, INCIDENTAL, SPECIAL, EXEMPLARY, OR CONSEQUENTIAL DAMAGES (INCLUDING, BUT NOT LIMITED TO, PROCUREMENT OF SUBSTITUTE GOODS OR SERVICES; LOSS OF USE, DATA, OR PROFITS; OR BUSINESS INTERRUPTION)

HOWEVER CAUSED AND ON ANY THEORY OF LIABILITY, WHETHER IN CONTRACT, STRICT LIABILITY, OR TORT (INCLUDING NEGLIGENCE OR OTHERWISE) ARISING IN ANY WAY OUT OF THE USE OF THIS SOFTWARE, EVEN IF ADVISED OF THE POSSIBILITY OF SUCH DAMAGE.

(17) S. L. Moshier

Author: S. L. Moshier.

Copyright (c) 1984,2000 S.L. Moshier

Permission to use, copy, modify, and distribute this software for any purpose without fee is hereby granted, provided that this entire notice is included in all copies of any software which is or includes a copy or modification of this software and in all copies of the supporting documentation for such software.

THIS SOFTWARE IS BEING PROVIDED "AS IS", WITHOUT ANY EXPRESS OR IMPLIED WARRANTY. IN PARTICULAR, THE AUTHOR MAKES NO REPRESENTATION OR WARRANTY OF ANY KIND CONCERNING THE MERCHANTABILITY OF THIS SOFTWARE OR ITS FITNESS FOR ANY PARTICULAR PURPOSE.

(18) Citrus Project

Copyright (c)1999 Citrus Project,
All rights reserved.

Redistribution and use in source and binary forms, with or without modification, are permitted provided that the following conditions are met:

1. Redistributions of source code must retain the above copyright notice, this list of conditions and the following disclaimer.
2. Redistributions in binary form must reproduce the above copyright notice, this list of conditions and the following disclaimer in the documentation and/or other materials provided with the distribution.

THIS SOFTWARE IS PROVIDED BY THE AUTHOR AND CONTRIBUTORS ``AS IS'' AND ANY EXPRESS OR IMPLIED WARRANTIES, INCLUDING, BUT NOT LIMITED TO, THE IMPLIED WARRANTIES OF MERCHANTABILITY AND FITNESS FOR A PARTICULAR PURPOSE ARE DISCLAIMED. IN NO EVENT SHALL THE AUTHOR OR CONTRIBUTORS BE LIABLE FOR ANY DIRECT, INDIRECT, INCIDENTAL, SPECIAL, EXEMPLARY, OR CONSEQUENTIAL DAMAGES (INCLUDING, BUT NOT LIMITED TO, PROCUREMENT OF SUBSTITUTE GOODS OR SERVICES; LOSS OF USE, DATA, OR PROFITS; OR BUSINESS INTERRUPTION) HOWEVER CAUSED AND ON ANY THEORY OF LIABILITY, WHETHER IN CONTRACT, STRICT LIABILITY, OR TORT (INCLUDING NEGLIGENCE OR OTHERWISE) ARISING IN ANY WAY OUT OF THE USE OF THIS SOFTWARE, EVEN IF ADVISED OF THE POSSIBILITY OF SUCH DAMAGE.

(19) Todd C. Miller

Copyright (c) 1998 Todd C. Miller <Todd.Miller@courtesan.com>
All rights reserved.

Redistribution and use in source and binary forms, with or without modification, are permitted provided that the following conditions are met:

1. Redistributions of source code must retain the above copyright notice, this list of conditions and the following disclaimer.
2. Redistributions in binary form must reproduce the above copyright notice, this list of conditions and the following disclaimer in the documentation and/or other materials provided with the distribution.
3. The name of the author may not be used to endorse or promote products derived from this software without specific prior written permission.

THIS SOFTWARE IS PROVIDED ``AS IS'' AND ANY EXPRESS OR IMPLIED WARRANTIES, INCLUDING, BUT NOT LIMITED TO, THE IMPLIED WARRANTIES OF MERCHANTABILITY AND FITNESS FOR A PARTICULAR PURPOSE ARE DISCLAIMED. IN NO EVENT SHALL THE AUTHOR BE LIABLE FOR ANY DIRECT, INDIRECT, INCIDENTAL, SPECIAL, EXEMPLARY, OR CONSEQUENTIAL DAMAGES (INCLUDING, BUT NOT LIMITED TO, PROCUREMENT OF SUBSTITUTE GOODS OR SERVICES; LOSS OF USE, DATA, OR PROFITS; OR BUSINESS INTERRUPTION) HOWEVER CAUSED AND ON ANY THEORY OF LIABILITY, WHETHER IN CONTRACT, STRICT LIABILITY, OR TORT (INCLUDING NEGLIGENCE OR OTHERWISE) ARISING IN ANY WAY OUT OF THE USE OF THIS SOFTWARE, EVEN IF ADVISED OF THE POSSIBILITY OF SUCH DAMAGE.

(20) DJ Delorie (i386)
Copyright (C) 1991 DJ Delorie
All rights reserved.

Redistribution, modification, and use in source and binary forms is permitted provided that the above copyright notice and following paragraph are duplicated in all such forms.

This file is distributed WITHOUT ANY WARRANTY; without even the implied warranty of MERCHANTABILITY or FITNESS FOR A PARTICULAR PURPOSE.

(21) Free Software Foundation LGPL License (*-linux* targets only)

Copyright (C) 1990-1999, 2000, 2001 Free Software Foundation, Inc.
This file is part of the GNU C Library.
Contributed by Mark Kettenis <kettenis@phys.uva.nl>, 1997.

The GNU C Library is free software; you can redistribute it and/or modify it under the terms of the GNU Lesser General Public License as published by the Free Software Foundation; either version 2.1 of the License, or (at your option) any later version.

The GNU C Library is distributed in the hope that it will be useful, but WITHOUT ANY WARRANTY; without even the implied warranty of MERCHANTABILITY or FITNESS FOR A PARTICULAR PURPOSE. See the GNU Lesser General Public License for more details.

You should have received a copy of the GNU Lesser General Public License along with the GNU C Library; if not, write to the Free

Software Foundation, Inc., 51 Franklin Street, Fifth Floor, Boston, MA
02110-1301 USA.

(22) Xavier Leroy LGPL License (i[3456]86-*-linux* targets only)

Copyright (C) 1996 Xavier Leroy (Xavier.Leroy@inria.fr)

This program is free software; you can redistribute it and/or modify it under the terms of the GNU Library General Public License as published by the Free Software Foundation; either version 2 of the License, or (at your option) any later version.

This program is distributed in the hope that it will be useful, but WITHOUT ANY WARRANTY; without even the implied warranty of MERCHANTABILITY or FITNESS FOR A PARTICULAR PURPOSE. See the GNU Library General Public License for more details.

(23) Intel (i960)

Copyright (c) 1993 Intel Corporation

Intel hereby grants you permission to copy, modify, and distribute this software and its documentation. Intel grants this permission provided that the above copyright notice appears in all copies and that both the copyright notice and this permission notice appear in supporting documentation. In addition, Intel grants this permission provided that you prominently mark as “not part of the original” any modifications made to this software or documentation, and that the name of Intel Corporation not be used in advertising or publicity pertaining to distribution of the software or the documentation without specific, written prior permission.

Intel Corporation provides this AS IS, WITHOUT ANY WARRANTY, EXPRESS OR IMPLIED, INCLUDING, WITHOUT LIMITATION, ANY WARRANTY OF MERCHANTABILITY OR FITNESS FOR A PARTICULAR PURPOSE. Intel makes no guarantee or representations regarding the use of, or the results of the use of, the software and documentation in terms of correctness, accuracy, reliability, currentness, or otherwise; and you rely on the software, documentation and results solely at your own risk.

IN NO EVENT SHALL INTEL BE LIABLE FOR ANY LOSS OF USE, LOSS OF BUSINESS, LOSS OF PROFITS, INDIRECT, INCIDENTAL, SPECIAL OR CONSEQUENTIAL DAMAGES OF ANY KIND. IN NO EVENT SHALL INTEL'S TOTAL LIABILITY EXCEED THE SUM PAID TO INTEL FOR THE PRODUCT LICENSED HEREUNDER.

(24) Hewlett-Packard (hppa targets only)

(c) Copyright 1986 HEWLETT-PACKARD COMPANY

To anyone who acknowledges that this file is provided “AS IS” without any express or implied warranty:
permission to use, copy, modify, and distribute this file

for any purpose is hereby granted without fee, provided that the above copyright notice and this notice appears in all copies, and that the name of Hewlett-Packard Company not be used in advertising or publicity pertaining to distribution of the software without specific, written prior permission. Hewlett-Packard Company makes no representations about the suitability of this software for any purpose.

(25) Henry Spencer (only *-linux targets)

Copyright 1992, 1993, 1994 Henry Spencer. All rights reserved. This software is not subject to any license of the American Telephone and Telegraph Company or of the Regents of the University of California.

Permission is granted to anyone to use this software for any purpose on any computer system, and to alter it and redistribute it, subject to the following restrictions:

1. The author is not responsible for the consequences of use of this software, no matter how awful, even if they arise from flaws in it.
2. The origin of this software must not be misrepresented, either by explicit claim or by omission. Since few users ever read sources, credits must appear in the documentation.
3. Altered versions must be plainly marked as such, and must not be misrepresented as being the original software. Since few users ever read sources, credits must appear in the documentation.
4. This notice may not be removed or altered.

(26) Mike Barcroft

Copyright (c) 2001 Mike Barcroft <mike@FreeBSD.org>
All rights reserved.

Redistribution and use in source and binary forms, with or without modification, are permitted provided that the following conditions are met:

1. Redistributions of source code must retain the above copyright notice, this list of conditions and the following disclaimer.
2. Redistributions in binary form must reproduce the above copyright notice, this list of conditions and the following disclaimer in the documentation and/or other materials provided with the distribution.

THIS SOFTWARE IS PROVIDED BY THE AUTHOR AND CONTRIBUTORS ``AS IS'' AND ANY EXPRESS OR IMPLIED WARRANTIES, INCLUDING, BUT NOT LIMITED TO, THE IMPLIED WARRANTIES OF MERCHANTABILITY AND FITNESS FOR A PARTICULAR PURPOSE ARE DISCLAIMED. IN NO EVENT SHALL THE AUTHOR OR CONTRIBUTORS BE LIABLE FOR ANY DIRECT, INDIRECT, INCIDENTAL, SPECIAL, EXEMPLARY, OR CONSEQUENTIAL DAMAGES (INCLUDING, BUT NOT LIMITED TO, PROCUREMENT OF SUBSTITUTE GOODS OR SERVICES; LOSS OF USE, DATA, OR PROFITS; OR BUSINESS INTERRUPTION)

HOWEVER CAUSED AND ON ANY THEORY OF LIABILITY, WHETHER IN CONTRACT, STRICT LIABILITY, OR TORT (INCLUDING NEGLIGENCE OR OTHERWISE) ARISING IN ANY WAY OUT OF THE USE OF THIS SOFTWARE, EVEN IF ADVISED OF THE POSSIBILITY OF SUCH DAMAGE.

(27) Konstantin Chuguev (--enable-newlib-iconv)

Copyright (c) 1999, 2000

Konstantin Chuguev. All rights reserved.

Redistribution and use in source and binary forms, with or without modification, are permitted provided that the following conditions are met:

1. Redistributions of source code must retain the above copyright notice, this list of conditions and the following disclaimer.
2. Redistributions in binary form must reproduce the above copyright notice, this list of conditions and the following disclaimer in the documentation and/or other materials provided with the distribution.

THIS SOFTWARE IS PROVIDED BY THE AUTHOR AND CONTRIBUTORS ``AS IS'' AND ANY EXPRESS OR IMPLIED WARRANTIES, INCLUDING, BUT NOT LIMITED TO, THE IMPLIED WARRANTIES OF MERCHANTABILITY AND FITNESS FOR A PARTICULAR PURPOSE ARE DISCLAIMED. IN NO EVENT SHALL THE AUTHOR OR CONTRIBUTORS BE LIABLE FOR ANY DIRECT, INDIRECT, INCIDENTAL, SPECIAL, EXEMPLARY, OR CONSEQUENTIAL DAMAGES (INCLUDING, BUT NOT LIMITED TO, PROCUREMENT OF SUBSTITUTE GOODS OR SERVICES; LOSS OF USE, DATA, OR PROFITS; OR BUSINESS INTERRUPTION) HOWEVER CAUSED AND ON ANY THEORY OF LIABILITY, WHETHER IN CONTRACT, STRICT LIABILITY, OR TORT (INCLUDING NEGLIGENCE OR OTHERWISE) ARISING IN ANY WAY OUT OF THE USE OF THIS SOFTWARE, EVEN IF ADVISED OF THE POSSIBILITY OF SUCH DAMAGE.

iconv (Charset Conversion Library) v2.0

(28) Artem Bityuckiy (--enable-newlib-iconv)

Copyright (c) 2003, Artem B. Bityuckiy, SoftMine Corporation.

Rights transferred to Franklin Electronic Publishers.

Redistribution and use in source and binary forms, with or without modification, are permitted provided that the following conditions are met:

1. Redistributions of source code must retain the above copyright notice, this list of conditions and the following disclaimer.
2. Redistributions in binary form must reproduce the above copyright notice, this list of conditions and the following disclaimer in the documentation and/or other materials provided with the distribution.

THIS SOFTWARE IS PROVIDED BY THE AUTHOR AND CONTRIBUTORS ``AS IS'' AND ANY EXPRESS OR IMPLIED WARRANTIES, INCLUDING, BUT NOT LIMITED TO, THE IMPLIED WARRANTIES OF MERCHANTABILITY AND FITNESS FOR A PARTICULAR PURPOSE ARE DISCLAIMED. IN NO EVENT SHALL THE AUTHOR OR CONTRIBUTORS BE LIABLE FOR ANY DIRECT, INDIRECT, INCIDENTAL, SPECIAL, EXEMPLARY, OR CONSEQUENTIAL

DAMAGES (INCLUDING, BUT NOT LIMITED TO, PROCUREMENT OF SUBSTITUTE GOODS OR SERVICES; LOSS OF USE, DATA, OR PROFITS; OR BUSINESS INTERRUPTION) HOWEVER CAUSED AND ON ANY THEORY OF LIABILITY, WHETHER IN CONTRACT, STRICT LIABILITY, OR TORT (INCLUDING NEGLIGENCE OR OTHERWISE) ARISING IN ANY WAY OUT OF THE USE OF THIS SOFTWARE, EVEN IF ADVISED OF THE POSSIBILITY OF SUCH DAMAGE.

(29) IBM, Sony, Toshiba (only spu-* targets)

(C) Copyright 2001,2006,
International Business Machines Corporation,
Sony Computer Entertainment, Incorporated,
Toshiba Corporation,

All rights reserved.

Redistribution and use in source and binary forms, with or without modification, are permitted provided that the following conditions are met:

- * Redistributions of source code must retain the above copyright notice, this list of conditions and the following disclaimer.
- * Redistributions in binary form must reproduce the above copyright notice, this list of conditions and the following disclaimer in the documentation and/or other materials provided with the distribution.
- * Neither the names of the copyright holders nor the names of their contributors may be used to endorse or promote products derived from this software without specific prior written permission.

THIS SOFTWARE IS PROVIDED BY THE COPYRIGHT HOLDERS AND CONTRIBUTORS "AS IS" AND ANY EXPRESS OR IMPLIED WARRANTIES, INCLUDING, BUT NOT LIMITED TO, THE IMPLIED WARRANTIES OF MERCHANTABILITY AND FITNESS FOR A PARTICULAR PURPOSE ARE DISCLAIMED. IN NO EVENT SHALL THE COPYRIGHT OWNER OR CONTRIBUTORS BE LIABLE FOR ANY DIRECT, INDIRECT, INCIDENTAL, SPECIAL, EXEMPLARY, OR CONSEQUENTIAL DAMAGES (INCLUDING, BUT NOT LIMITED TO, PROCUREMENT OF SUBSTITUTE GOODS OR SERVICES; LOSS OF USE, DATA, OR PROFITS; OR BUSINESS INTERRUPTION) HOWEVER CAUSED AND ON ANY THEORY OF LIABILITY, WHETHER IN CONTRACT, STRICT LIABILITY, OR TORT (INCLUDING NEGLIGENCE OR OTHERWISE) ARISING IN ANY WAY OUT OF THE USE OF THIS SOFTWARE, EVEN IF ADVISED OF THE POSSIBILITY OF SUCH DAMAGE.

(30) - Alex Tatmanjants (targets using libc/posix)

Copyright (c) 1995 Alex Tatmanjants <alex@elvisti.kiev.ua>
at Electronni Visti IA, Kiev, Ukraine.
All rights reserved.

Redistribution and use in source and binary forms, with or without modification, are permitted provided that the following conditions are met:

1. Redistributions of source code must retain the above copyright notice, this list of conditions and the following disclaimer.
2. Redistributions in binary form must reproduce the above copyright

notice, this list of conditions and the following disclaimer in the documentation and/or other materials provided with the distribution.

THIS SOFTWARE IS PROVIDED BY THE AUTHOR ``AS IS'' AND ANY EXPRESS OR IMPLIED WARRANTIES, INCLUDING, BUT NOT LIMITED TO, THE IMPLIED WARRANTIES OF MERCHANTABILITY AND FITNESS FOR A PARTICULAR PURPOSE ARE DISCLAIMED. IN NO EVENT SHALL THE AUTHOR BE LIABLE FOR ANY DIRECT, INDIRECT, INCIDENTAL, SPECIAL, EXEMPLARY, OR CONSEQUENTIAL DAMAGES (INCLUDING, BUT NOT LIMITED TO, PROCUREMENT OF SUBSTITUTE GOODS OR SERVICES; LOSS OF USE, DATA, OR PROFITS; OR BUSINESS INTERRUPTION) HOWEVER CAUSED AND ON ANY THEORY OF LIABILITY, WHETHER IN CONTRACT, STRICT LIABILITY, OR TORT (INCLUDING NEGLIGENCE OR OTHERWISE) ARISING IN ANY WAY OUT OF THE USE OF THIS SOFTWARE, EVEN IF ADVISED OF THE POSSIBILITY OF SUCH DAMAGE.

(31) - M. Warner Losh (targets using libc/posix)

Copyright (c) 1998, M. Warner Losh <imp@freebsd.org>
All rights reserved.

Redistribution and use in source and binary forms, with or without modification, are permitted provided that the following conditions are met:

1. Redistributions of source code must retain the above copyright notice, this list of conditions and the following disclaimer.
2. Redistributions in binary form must reproduce the above copyright notice, this list of conditions and the following disclaimer in the documentation and/or other materials provided with the distribution.

THIS SOFTWARE IS PROVIDED BY THE AUTHOR AND CONTRIBUTORS ``AS IS'' AND ANY EXPRESS OR IMPLIED WARRANTIES, INCLUDING, BUT NOT LIMITED TO, THE IMPLIED WARRANTIES OF MERCHANTABILITY AND FITNESS FOR A PARTICULAR PURPOSE ARE DISCLAIMED. IN NO EVENT SHALL THE AUTHOR OR CONTRIBUTORS BE LIABLE FOR ANY DIRECT, INDIRECT, INCIDENTAL, SPECIAL, EXEMPLARY, OR CONSEQUENTIAL DAMAGES (INCLUDING, BUT NOT LIMITED TO, PROCUREMENT OF SUBSTITUTE GOODS OR SERVICES; LOSS OF USE, DATA, OR PROFITS; OR BUSINESS INTERRUPTION) HOWEVER CAUSED AND ON ANY THEORY OF LIABILITY, WHETHER IN CONTRACT, STRICT LIABILITY, OR TORT (INCLUDING NEGLIGENCE OR OTHERWISE) ARISING IN ANY WAY OUT OF THE USE OF THIS SOFTWARE, EVEN IF ADVISED OF THE POSSIBILITY OF SUCH DAMAGE.

(32) - Andrey A. Chernov (targets using libc/posix)

Copyright (C) 1996 by Andrey A. Chernov, Moscow, Russia.
All rights reserved.

Redistribution and use in source and binary forms, with or without modification, are permitted provided that the following conditions are met:

1. Redistributions of source code must retain the above copyright notice, this list of conditions and the following disclaimer.
2. Redistributions in binary form must reproduce the above copyright

notice, this list of conditions and the following disclaimer in the documentation and/or other materials provided with the distribution.

THIS SOFTWARE IS PROVIDED BY THE AUTHOR ``AS IS'' AND ANY EXPRESS OR IMPLIED WARRANTIES, INCLUDING, BUT NOT LIMITED TO, THE IMPLIED WARRANTIES OF MERCHANTABILITY AND FITNESS FOR A PARTICULAR PURPOSE ARE DISCLAIMED. IN NO EVENT SHALL THE REGENTS OR CONTRIBUTORS BE LIABLE FOR ANY DIRECT, INDIRECT, INCIDENTAL, SPECIAL, EXEMPLARY, OR CONSEQUENTIAL DAMAGES (INCLUDING, BUT NOT LIMITED TO, PROCUREMENT OF SUBSTITUTE GOODS OR SERVICES; LOSS OF USE, DATA, OR PROFITS; OR BUSINESS INTERRUPTION) HOWEVER CAUSED AND ON ANY THEORY OF LIABILITY, WHETHER IN CONTRACT, STRICT LIABILITY, OR TORT (INCLUDING NEGLIGENCE OR OTHERWISE) ARISING IN ANY WAY OUT OF THE USE OF THIS SOFTWARE, EVEN IF ADVISED OF THE POSSIBILITY OF SUCH DAMAGE.

(33) - Daniel Eischen (targets using libc/posix)

Copyright (c) 2001 Daniel Eischen <deischen@FreeBSD.org>.
All rights reserved.

Redistribution and use in source and binary forms, with or without modification, are permitted provided that the following conditions are met:

1. Redistributions of source code must retain the above copyright notice, this list of conditions and the following disclaimer.
2. Redistributions in binary form must reproduce the above copyright notice, this list of conditions and the following disclaimer in the documentation and/or other materials provided with the distribution.

THIS SOFTWARE IS PROVIDED BY THE AUTHOR AND CONTRIBUTORS ``AS IS'' AND ANY EXPRESS OR IMPLIED WARRANTIES, INCLUDING, BUT NOT LIMITED TO, THE IMPLIED WARRANTIES OF MERCHANTABILITY AND FITNESS FOR A PARTICULAR PURPOSE ARE DISCLAIMED. IN NO EVENT SHALL THE REGENTS OR CONTRIBUTORS BE LIABLE FOR ANY DIRECT, INDIRECT, INCIDENTAL, SPECIAL, EXEMPLARY, OR CONSEQUENTIAL DAMAGES (INCLUDING, BUT NOT LIMITED TO, PROCUREMENT OF SUBSTITUTE GOODS OR SERVICES; LOSS OF USE, DATA, OR PROFITS; OR BUSINESS INTERRUPTION) HOWEVER CAUSED AND ON ANY THEORY OF LIABILITY, WHETHER IN CONTRACT, STRICT LIABILITY, OR TORT (INCLUDING NEGLIGENCE OR OTHERWISE) ARISING IN ANY WAY OUT OF THE USE OF THIS SOFTWARE, EVEN IF ADVISED OF THE POSSIBILITY OF SUCH DAMAGE.

(34) - Jon Beniston (only lm32-* targets)

Contributed by Jon Beniston <jon@beniston.com>

Redistribution and use in source and binary forms, with or without modification, are permitted provided that the following conditions are met:

1. Redistributions of source code must retain the above copyright notice, this list of conditions and the following disclaimer.
2. Redistributions in binary form must reproduce the above copyright

notice, this list of conditions and the following disclaimer in the documentation and/or other materials provided with the distribution.

THIS SOFTWARE IS PROVIDED BY THE AUTHOR AND CONTRIBUTORS ``AS IS'' AND ANY EXPRESS OR IMPLIED WARRANTIES, INCLUDING, BUT NOT LIMITED TO, THE IMPLIED WARRANTIES OF MERCHANTABILITY AND FITNESS FOR A PARTICULAR PURPOSE ARE DISCLAIMED. IN NO EVENT SHALL THE AUTHOR OR CONTRIBUTORS BE LIABLE FOR ANY DIRECT, INDIRECT, INCIDENTAL, SPECIAL, EXEMPLARY, OR CONSEQUENTIAL DAMAGES (INCLUDING, BUT NOT LIMITED TO, PROCUREMENT OF SUBSTITUTE GOODS OR SERVICES; LOSS OF USE, DATA, OR PROFITS; OR BUSINESS INTERRUPTION) HOWEVER CAUSED AND ON ANY THEORY OF LIABILITY, WHETHER IN CONTRACT, STRICT LIABILITY, OR TORT (INCLUDING NEGLIGENCE OR OTHERWISE) ARISING IN ANY WAY OUT OF THE USE OF THIS SOFTWARE, EVEN IF ADVISED OF THE POSSIBILITY OF SUCH DAMAGE.

(35) - ARM Ltd (arm and thumb variant targets only)

Copyright (c) 2009 ARM Ltd
All rights reserved.

Redistribution and use in source and binary forms, with or without modification, are permitted provided that the following conditions are met:

1. Redistributions of source code must retain the above copyright notice, this list of conditions and the following disclaimer.
2. Redistributions in binary form must reproduce the above copyright notice, this list of conditions and the following disclaimer in the documentation and/or other materials provided with the distribution.
3. The name of the company may not be used to endorse or promote products derived from this software without specific prior written permission.

THIS SOFTWARE IS PROVIDED BY ARM LTD ``AS IS'' AND ANY EXPRESS OR IMPLIED WARRANTIES, INCLUDING, BUT NOT LIMITED TO, THE IMPLIED WARRANTIES OF MERCHANTABILITY AND FITNESS FOR A PARTICULAR PURPOSE ARE DISCLAIMED. IN NO EVENT SHALL ARM LTD BE LIABLE FOR ANY DIRECT, INDIRECT, INCIDENTAL, SPECIAL, EXEMPLARY, OR CONSEQUENTIAL DAMAGES (INCLUDING, BUT NOT LIMITED TO, PROCUREMENT OF SUBSTITUTE GOODS OR SERVICES; LOSS OF USE, DATA, OR PROFITS; OR BUSINESS INTERRUPTION) HOWEVER CAUSED AND ON ANY THEORY OF LIABILITY, WHETHER IN CONTRACT, STRICT LIABILITY, OR TORT (INCLUDING NEGLIGENCE OR OTHERWISE) ARISING IN ANY WAY OUT OF THE USE OF THIS SOFTWARE, EVEN IF ADVISED OF THE POSSIBILITY OF SUCH DAMAGE.

(36) - Xilinx, Inc. (microblaze-* and powerpc-* targets)

Copyright (c) 2004, 2009 Xilinx, Inc. All rights reserved.

Redistribution and use in source and binary forms, with or without modification, are permitted provided that the following conditions are met:

1. Redistributions source code must retain the above copyright notice, this list of conditions and the following disclaimer.
2. Redistributions in binary form must reproduce the above copyright notice, this list of conditions and the following disclaimer in the documentation and/or other materials provided with the distribution.
3. Neither the name of Xilinx nor the names of its contributors may be used to endorse or promote products derived from this software without specific prior written permission.

THIS SOFTWARE IS PROVIDED BY THE COPYRIGHT HOLDER AND CONTRIBUTORS "AS IS" AND ANY EXPRESS OR IMPLIED WARRANTIES, INCLUDING, BUT NOT LIMITED TO, THE IMPLIED WARRANTIES OF MERCHANTABILITY AND FITNESS FOR A PARTICULAR PURPOSE ARE DISCLAIMED. IN NO EVENT SHALL THE COPYRIGHT HOLDER OR CONTRIBUTORS BE LIABLE FOR ANY DIRECT, INDIRECT, INCIDENTAL, SPECIAL, EXEMPLARY, OR CONSEQUENTIAL DAMAGES (INCLUDING, BUT NOT LIMITED TO, PROCUREMENT OF SUBSTITUTE GOODS OR SERVICES; LOSS OF USE, DATA, OR PROFITS; OR BUSINESS INTERRUPTION) HOWEVER CAUSED AND ON ANY THEORY OF LIABILITY, WHETHER IN CONTRACT, STRICT LIABILITY, OR TORT (INCLUDING NEGLIGENCE OR OTHERWISE) ARISING IN ANY WAY OUT OF THE USE OF THIS SOFTWARE, EVEN IF ADVISED OF THE POSSIBILITY OF SUCH DAMAGE.

(37) Texas Instruments Incorporated (tic6x-*, *-tirtos targets)

Copyright (c) 1996-2010,2014 Texas Instruments Incorporated
<http://www.ti.com/>

Redistribution and use in source and binary forms, with or without modification, are permitted provided that the following conditions are met:

Redistributions of source code must retain the above copyright notice, this list of conditions and the following disclaimer.

Redistributions in binary form must reproduce the above copyright notice, this list of conditions and the following disclaimer in the documentation and/or other materials provided with the distribution.

Neither the name of Texas Instruments Incorporated nor the names of its contributors may be used to endorse or promote products derived from this software without specific prior written permission.

THIS SOFTWARE IS PROVIDED BY THE COPYRIGHT HOLDERS AND CONTRIBUTORS "AS IS" AND ANY EXPRESS OR IMPLIED WARRANTIES, INCLUDING, BUT NOT LIMITED TO, THE IMPLIED WARRANTIES OF MERCHANTABILITY AND FITNESS FOR A PARTICULAR PURPOSE ARE DISCLAIMED. IN NO EVENT SHALL THE COPYRIGHT OWNER OR CONTRIBUTORS BE LIABLE FOR ANY DIRECT, INDIRECT, INCIDENTAL, SPECIAL, EXEMPLARY, OR CONSEQUENTIAL DAMAGES (INCLUDING, BUT NOT

LIMITED TO, PROCUREMENT OF SUBSTITUTE GOODS OR SERVICES; LOSS OF USE, DATA, OR PROFITS; OR BUSINESS INTERRUPTION) HOWEVER CAUSED AND ON ANY THEORY OF LIABILITY, WHETHER IN CONTRACT, STRICT LIABILITY, OR TORT (INCLUDING NEGLIGENCE OR OTHERWISE) ARISING IN ANY WAY OUT OF THE USE OF THIS SOFTWARE, EVEN IF ADVISED OF THE POSSIBILITY OF SUCH DAMAGE.

(38) National Semiconductor (cr16-* and crx-* targets)

Copyright (c) 2004 National Semiconductor Corporation

The authors hereby grant permission to use, copy, modify, distribute, and license this software and its documentation for any purpose, provided that existing copyright notices are retained in all copies and that this notice is included verbatim in any distributions. No written agreement, license, or royalty fee is required for any of the authorized uses. Modifications to this software may be copyrighted by their authors and need not follow the licensing terms described here, provided that the new terms are clearly indicated on the first page of each file where they apply.

(39) - Adapteva, Inc. (epiphany-* targets)

Copyright (c) 2011, Adapteva, Inc.
All rights reserved.

Redistribution and use in source and binary forms, with or without modification, are permitted provided that the following conditions are met:

- * Redistributions of source code must retain the above copyright notice, this list of conditions and the following disclaimer.
- * Redistributions in binary form must reproduce the above copyright notice, this list of conditions and the following disclaimer in the documentation and/or other materials provided with the distribution.
- * Neither the name of Adapteva nor the names of its contributors may be used to endorse or promote products derived from this software without specific prior written permission.

THIS SOFTWARE IS PROVIDED BY THE COPYRIGHT HOLDERS AND CONTRIBUTORS "AS IS" AND ANY EXPRESS OR IMPLIED WARRANTIES, INCLUDING, BUT NOT LIMITED TO, THE IMPLIED WARRANTIES OF MERCHANTABILITY AND FITNESS FOR A PARTICULAR PURPOSE ARE DISCLAIMED. IN NO EVENT SHALL THE COPYRIGHT HOLDER OR CONTRIBUTORS BE LIABLE FOR ANY DIRECT, INDIRECT, INCIDENTAL, SPECIAL, EXEMPLARY, OR CONSEQUENTIAL DAMAGES (INCLUDING, BUT NOT LIMITED TO, PROCUREMENT OF SUBSTITUTE GOODS OR SERVICES; LOSS OF USE, DATA, OR PROFITS; OR BUSINESS INTERRUPTION) HOWEVER CAUSED AND ON ANY THEORY OF LIABILITY, WHETHER IN CONTRACT, STRICT LIABILITY, OR TORT (INCLUDING NEGLIGENCE OR OTHERWISE) ARISING IN ANY WAY OUT OF THE USE OF THIS SOFTWARE, EVEN IF ADVISED OF THE POSSIBILITY OF SUCH DAMAGE.

(40) - Altera Corporation (nios2-* targets)

Copyright (c) 2003 Altera Corporation
All rights reserved.

Redistribution and use in source and binary forms, with or without modification, are permitted provided that the following conditions are met:

- o Redistributions of source code must retain the above copyright notice, this list of conditions and the following disclaimer.
- o Redistributions in binary form must reproduce the above copyright notice, this list of conditions and the following disclaimer in the documentation and/or other materials provided with the distribution.
- o Neither the name of Altera Corporation nor the names of its contributors may be used to endorse or promote products derived from this software without specific prior written permission.

THIS SOFTWARE IS PROVIDED BY ALTERA CORPORATION, THE COPYRIGHT HOLDER, AND ITS CONTRIBUTORS "AS IS" AND ANY EXPRESS OR IMPLIED WARRANTIES, INCLUDING, BUT NOT LIMITED TO, THE IMPLIED WARRANTIES OF MERCHANTABILITY AND FITNESS FOR A PARTICULAR PURPOSE ARE DISCLAIMED. IN NO EVENT SHALL THE COPYRIGHT HOLDER OR CONTRIBUTORS BE LIABLE FOR ANY DIRECT, INDIRECT, INCIDENTAL, SPECIAL, EXEMPLARY, OR CONSEQUENTIAL DAMAGES (INCLUDING, BUT NOT LIMITED TO, PROCUREMENT OF SUBSTITUTE GOODS OR SERVICES; LOSS OF USE, DATA, OR PROFITS; OR BUSINESS INTERRUPTION) HOWEVER CAUSED AND ON ANY THEORY OF LIABILITY, WHETHER IN CONTRACT, STRICT LIABILITY, OR TORT (INCLUDING NEGLIGENCE OR OTHERWISE) ARISING IN ANY WAY OUT OF THE USE OF THIS SOFTWARE, EVEN IF ADVISED OF THE POSSIBILITY OF SUCH DAMAGE.

(41) Ed Schouten - Free BSD

Copyright (c) 2008 Ed Schouten <ed@FreeBSD.org>
All rights reserved.

Redistribution and use in source and binary forms, with or without modification, are permitted provided that the following conditions are met:

1. Redistributions of source code must retain the above copyright notice, this list of conditions and the following disclaimer.
2. Redistributions in binary form must reproduce the above copyright notice, this list of conditions and the following disclaimer in the documentation and/or other materials provided with the distribution.

THIS SOFTWARE IS PROVIDED BY THE AUTHOR AND CONTRIBUTORS "AS IS" AND ANY EXPRESS OR IMPLIED WARRANTIES, INCLUDING, BUT NOT LIMITED TO, THE IMPLIED WARRANTIES OF MERCHANTABILITY AND FITNESS FOR A PARTICULAR PURPOSE ARE DISCLAIMED. IN NO EVENT SHALL THE AUTHOR OR CONTRIBUTORS BE LIABLE FOR ANY DIRECT, INDIRECT, INCIDENTAL, SPECIAL, EXEMPLARY, OR CONSEQUENTIAL DAMAGES (INCLUDING, BUT NOT LIMITED TO, PROCUREMENT OF SUBSTITUTE GOODS OR SERVICES; LOSS OF USE, DATA, OR PROFITS; OR BUSINESS INTERRUPTION) HOWEVER CAUSED AND ON ANY THEORY OF LIABILITY, WHETHER IN CONTRACT, STRICT LIABILITY, OR TORT (INCLUDING NEGLIGENCE OR OTHERWISE) ARISING IN ANY WAY OUT OF THE USE OF THIS SOFTWARE, EVEN IF ADVISED OF THE POSSIBILITY OF SUCH DAMAGE.

Copyright 1992-2012 The FreeBSD Project. All rights reserved.

Redistribution and use in source and binary forms, with or without modification, are permitted provided that the following conditions are met:

1. Redistributions of source code must retain the above copyright notice, this list of conditions and the following disclaimer.
2. Redistributions in binary form must reproduce the above copyright notice, this list of conditions and the following disclaimer in the documentation and/or other materials provided with the distribution.

THIS SOFTWARE IS PROVIDED BY THE FREEBSD PROJECT ``AS IS'' AND ANY EXPRESS OR IMPLIED WARRANTIES, INCLUDING, BUT NOT LIMITED TO, THE IMPLIED WARRANTIES OF MERCHANTABILITY AND FITNESS FOR A PARTICULAR PURPOSE ARE DISCLAIMED. IN NO EVENT SHALL THE FREEBSD PROJECT OR CONTRIBUTORS BE LIABLE FOR ANY DIRECT, INDIRECT, INCIDENTAL, SPECIAL, EXEMPLARY, OR CONSEQUENTIAL DAMAGES (INCLUDING, BUT NOT LIMITED TO, PROCUREMENT OF SUBSTITUTE GOODS OR SERVICES; LOSS OF USE, DATA, OR PROFITS; OR BUSINESS INTERRUPTION) HOWEVER CAUSED AND ON ANY THEORY OF LIABILITY, WHETHER IN CONTRACT, STRICT LIABILITY, OR TORT (INCLUDING NEGLIGENCE OR OTHERWISE) ARISING IN ANY WAY OUT OF THE USE OF THIS SOFTWARE, EVEN IF ADVISED OF THE POSSIBILITY OF SUCH DAMAGE.

The views and conclusions contained in the software and documentation are those of the authors and should not be interpreted as representing official policies, either expressed or implied, of the FreeBSD Project.

** harry-spencer-regex; version alpha3.8p1 -- <https://github.com/garyhouston/regex>
<https://github.com/garyhouston/regex/blob/alpha3.8p1/COPYRIGHT>

Copyright 1992, 1993, 1994, 1997 Henry Spencer. All rights reserved.
This software is not subject to any license of the American Telephone and Telegraph Company or of the Regents of the University of California.

Permission is granted to anyone to use this software for any purpose on any computer system, and to alter it and redistribute it, subject to the following restrictions:

1. The author is not responsible for the consequences of use of this software, no matter how awful, even if they arise from flaws in it.
2. The origin of this software must not be misrepresented, either by explicit claim or by omission. Since few users ever read sources, credits must appear in the documentation.
3. Altered versions must be plainly marked as such, and must not be misrepresented as being the original software. Since few users ever read sources, credits must appear in the documentation.
4. This notice may not be removed or altered.

** WPA applicant; version 2.9 -- https://linkprotect.cudasvc.com/url?a=https%3a%2f%2fw1.fi%2fwpa_applicant%2f&c=E,1,JCuzjsaJDsMATRBOuZlCYQH8E0v2LpIWbmqfyXaesO0MU8a4pBAolwBPXIXKmJR_3ayb8EiAbTXIhIVOfsl8vawEDvUGmsSMUKrr1tJ&typo=1
Copyright (c) 2003-2019, Jouni Malinen <j@w1.fi> and contributors

This software may be distributed, used, and modified under the terms of BSD license:

Redistribution and use in source and binary forms, with or without modification, are permitted provided that the following conditions are met:

1. Redistributions of source code must retain the above copyright notice, this list of conditions and the following disclaimer.
2. Redistributions in binary form must reproduce the above copyright notice, this list of conditions and the following disclaimer in the documentation and/or other materials provided with the distribution.
3. Neither the name(s) of the above-listed copyright holder(s) nor the names of its contributors may be used to endorse or promote products derived from this software without specific prior written permission.

THIS SOFTWARE IS PROVIDED BY THE COPYRIGHT HOLDERS AND CONTRIBUTORS "AS IS" AND ANY EXPRESS OR IMPLIED WARRANTIES, INCLUDING, BUT NOT LIMITED TO, THE IMPLIED WARRANTIES OF MERCHANTABILITY AND FITNESS FOR A PARTICULAR PURPOSE ARE DISCLAIMED. IN NO EVENT SHALL THE COPYRIGHT OWNER OR CONTRIBUTORS BE LIABLE FOR ANY DIRECT, INDIRECT, INCIDENTAL, SPECIAL, EXEMPLARY, OR CONSEQUENTIAL DAMAGES (INCLUDING, BUT NOT LIMITED TO, PROCUREMENT OF SUBSTITUTE GOODS OR SERVICES; LOSS OF USE, DATA, OR PROFITS; OR BUSINESS INTERRUPTION) HOWEVER CAUSED AND ON ANY THEORY OF LIABILITY, WHETHER IN CONTRACT, STRICT LIABILITY, OR TORT (INCLUDING NEGLIGENCE OR OTHERWISE) ARISING IN ANY WAY OUT OF THE USE OF THIS SOFTWARE, EVEN IF ADVISED OF THE POSSIBILITY OF SUCH DAMAGE.

** Bluez; version 5.64 -- https://linkprotect.cudasvc.com/url?a=http%3a%2f%2fwww.bluez.org&c=E,1,rGUGrZydhIEpD1pq3XD43lzh2p-jjODVDcR2ia_pplN08YFXyUxJSQRkWitoylFKs8tDgbonWWLsbBzSWpzfzrwOCl9L26vPlevbTsPZJCvYlu7-J7LVi-_%&typo=1
Copyright (C) 2000-2001 Qualcomm Incorporated
Copyright (C) 2002-2003 Maxim Krasnyansky <maxk@qualcomm.com>
Copyright (C) 2002-2010 Marcel Holtmann <marcel@holtmann.org>

* Package Bluez's source code may be found at:
https://amazon-source-code-downloads.s3.amazonaws.com/Alexa_Connect_Kit/bluez-5.64.tar.xz

GNU GENERAL PUBLIC LICENSE
Version 2, June 1991

Copyright (C) 1989, 1991 Free Software Foundation, Inc.

51 Franklin St, Fifth Floor, Boston, MA 02110-1301 USA

Everyone is permitted to copy and distribute verbatim copies of this license document, but changing it is not allowed.

Preamble

The licenses for most software are designed to take away your freedom to share and change it. By contrast, the GNU General Public License is intended to guarantee your freedom to share and change free software--to make sure the software is free for all its users. This General Public License applies to most of the Free Software Foundation's software and to any other program whose authors commit to using it. (Some other Free Software Foundation software is covered by the GNU Library General Public License instead.) You can apply it to your programs, too.

When we speak of free software, we are referring to freedom, not price. Our General Public Licenses are designed to make sure that you have the freedom to distribute copies of free software (and charge for this service if you wish), that you receive source code or can get it if you want it, that you can change the software or use pieces of it in new free programs; and that you know you can do these things.

To protect your rights, we need to make restrictions that forbid anyone to deny you these rights or to ask you to surrender the rights. These restrictions translate to certain responsibilities for you if you distribute copies of the software, or if you modify it.

For example, if you distribute copies of such a program, whether gratis or for a fee, you must give the recipients all the rights that you have. You must make sure that they, too, receive or can get the source code. And you must show them these terms so they know their rights.

We protect your rights with two steps: (1) copyright the software, and (2) offer you this license which gives you legal permission to copy, distribute and/or modify the software.

Also, for each author's protection and ours, we want to make certain that everyone understands that there is no warranty for this free software. If the software is modified by someone else and passed on, we want its recipients to know that what they have is not the original, so that any problems introduced by others will not reflect on the original authors' reputations.

Finally, any free program is threatened constantly by software patents. We wish to avoid the danger that redistributors of a free program will individually obtain patent licenses, in effect making the program proprietary. To prevent this, we have made it clear that any patent must be licensed for everyone's free use or not licensed at all.

The precise terms and conditions for copying, distribution and modification follow.

GNU GENERAL PUBLIC LICENSE
TERMS AND CONDITIONS FOR COPYING, DISTRIBUTION AND MODIFICATION

0. This License applies to any program or other work which contains a notice placed by the copyright holder saying it may be distributed under the terms of this General Public License. The "Program", below, refers to any such program or work, and a "work based on the Program" means either the Program or any derivative work under copyright law: that is to say, a work containing the Program or a portion of it, either verbatim or with modifications and/or translated into another language. (Hereinafter, translation is included without limitation in the term "modification".) Each licensee is addressed as "you".

Activities other than copying, distribution and modification are not covered by this License; they are outside its scope. The act of running the Program is not restricted, and the output from the Program is covered only if its contents constitute a work based on the Program (independent of having been made by running the Program). Whether that is true depends on what the Program does.

1. You may copy and distribute verbatim copies of the Program's source code as you receive it, in any medium, provided that you conspicuously and appropriately publish on each copy an appropriate copyright notice and disclaimer of warranty; keep intact all the notices that refer to this License and to the absence of any warranty; and give any other recipients of the Program a copy of this License along with the Program.

You may charge a fee for the physical act of transferring a copy, and you may at your option offer warranty protection in exchange for a fee.

2. You may modify your copy or copies of the Program or any portion of it, thus forming a work based on the Program, and copy and distribute such modifications or work under the terms of Section 1 above, provided that you also meet all of these conditions:

a) You must cause the modified files to carry prominent notices stating that you changed the files and the date of any change.

b) You must cause any work that you distribute or publish, that in whole or in part contains or is derived from the Program or any part thereof, to be licensed as a whole at no charge to all third parties under the terms of this License.

c) If the modified program normally reads commands interactively when run, you must cause it, when started running for such interactive use in the most ordinary way, to print or display an announcement including an appropriate copyright notice and a notice that there is no warranty (or else, saying that you provide

a warranty) and that users may redistribute the program under these conditions, and telling the user how to view a copy of this License. (Exception: if the Program itself is interactive but does not normally print such an announcement, your work based on the Program is not required to print an announcement.)

These requirements apply to the modified work as a whole. If identifiable sections of that work are not derived from the Program, and can be reasonably considered independent and separate works in themselves, then this License, and its terms, do not apply to those sections when you distribute them as separate works. But when you distribute the same sections as part of a whole which is a work based on the Program, the distribution of the whole must be on the terms of this License, whose permissions for other licensees extend to the entire whole, and thus to each and every part regardless of who wrote it.

Thus, it is not the intent of this section to claim rights or contest your rights to work written entirely by you; rather, the intent is to exercise the right to control the distribution of derivative or collective works based on the Program.

In addition, mere aggregation of another work not based on the Program with the Program (or with a work based on the Program) on a volume of a storage or distribution medium does not bring the other work under the scope of this License.

3. You may copy and distribute the Program (or a work based on it, under Section 2) in object code or executable form under the terms of Sections 1 and 2 above provided that you also do one of the following:

- a) Accompany it with the complete corresponding machine-readable source code, which must be distributed under the terms of Sections 1 and 2 above on a medium customarily used for software interchange; or,
- b) Accompany it with a written offer, valid for at least three years, to give any third party, for a charge no more than your cost of physically performing source distribution, a complete machine-readable copy of the corresponding source code, to be distributed under the terms of Sections 1 and 2 above on a medium customarily used for software interchange; or,
- c) Accompany it with the information you received as to the offer to distribute corresponding source code. (This alternative is allowed only for noncommercial distribution and only if you received the program in object code or executable form with such an offer, in accord with Subsection b above.)

The source code for a work means the preferred form of the work for making modifications to it. For an executable work, complete source code means all the source code for all modules it contains, plus any associated interface definition files, plus the scripts used to control compilation and installation of the executable. However, as a

special exception, the source code distributed need not include anything that is normally distributed (in either source or binary form) with the major components (compiler, kernel, and so on) of the operating system on which the executable runs, unless that component itself accompanies the executable.

If distribution of executable or object code is made by offering access to copy from a designated place, then offering equivalent access to copy the source code from the same place counts as distribution of the source code, even though third parties are not compelled to copy the source along with the object code.

4. You may not copy, modify, sublicense, or distribute the Program except as expressly provided under this License. Any attempt otherwise to copy, modify, sublicense or distribute the Program is void, and will automatically terminate your rights under this License. However, parties who have received copies, or rights, from you under this License will not have their licenses terminated so long as such parties remain in full compliance.

5. You are not required to accept this License, since you have not signed it. However, nothing else grants you permission to modify or distribute the Program or its derivative works. These actions are prohibited by law if you do not accept this License. Therefore, by modifying or distributing the Program (or any work based on the Program), you indicate your acceptance of this License to do so, and all its terms and conditions for copying, distributing or modifying the Program or works based on it.

6. Each time you redistribute the Program (or any work based on the Program), the recipient automatically receives a license from the original licensor to copy, distribute or modify the Program subject to these terms and conditions. You may not impose any further restrictions on the recipients' exercise of the rights granted herein. You are not responsible for enforcing compliance by third parties to this License.

7. If, as a consequence of a court judgment or allegation of patent infringement or for any other reason (not limited to patent issues), conditions are imposed on you (whether by court order, agreement or otherwise) that contradict the conditions of this License, they do not excuse you from the conditions of this License. If you cannot distribute so as to satisfy simultaneously your obligations under this License and any other pertinent obligations, then as a consequence you may not distribute the Program at all. For example, if a patent license would not permit royalty-free redistribution of the Program by all those who receive copies directly or indirectly through you, then the only way you could satisfy both it and this License would be to refrain entirely from distribution of the Program.

If any portion of this section is held invalid or unenforceable under any particular circumstance, the balance of the section is intended to

apply and the section as a whole is intended to apply in other circumstances.

It is not the purpose of this section to induce you to infringe any patents or other property right claims or to contest validity of any such claims; this section has the sole purpose of protecting the integrity of the free software distribution system, which is implemented by public license practices. Many people have made generous contributions to the wide range of software distributed through that system in reliance on consistent application of that system; it is up to the author/donor to decide if he or she is willing to distribute software through any other system and a licensee cannot impose that choice.

This section is intended to make thoroughly clear what is believed to be a consequence of the rest of this License.

8. If the distribution and/or use of the Program is restricted in certain countries either by patents or by copyrighted interfaces, the original copyright holder who places the Program under this License may add an explicit geographical distribution limitation excluding those countries, so that distribution is permitted only in or among countries not thus excluded. In such case, this License incorporates the limitation as if written in the body of this License.

9. The Free Software Foundation may publish revised and/or new versions of the General Public License from time to time. Such new versions will be similar in spirit to the present version, but may differ in detail to address new problems or concerns.

Each version is given a distinguishing version number. If the Program specifies a version number of this License which applies to it and “any later version”, you have the option of following the terms and conditions either of that version or of any later version published by the Free Software Foundation. If the Program does not specify a version number of this License, you may choose any version ever published by the Free Software Foundation.

10. If you wish to incorporate parts of the Program into other free programs whose distribution conditions are different, write to the author to ask for permission. For software which is copyrighted by the Free Software Foundation, write to the Free Software Foundation; we sometimes make exceptions for this. Our decision will be guided by the two goals of preserving the free status of all derivatives of our free software and of promoting the sharing and reuse of software generally.

NO WARRANTY

11. BECAUSE THE PROGRAM IS LICENSED FREE OF CHARGE, THERE IS NO WARRANTY FOR THE PROGRAM, TO THE EXTENT PERMITTED BY APPLICABLE LAW. EXCEPT WHEN OTHERWISE STATED IN WRITING THE COPYRIGHT HOLDERS AND/OR OTHER PARTIES PROVIDE THE PROGRAM “AS IS” WITHOUT WARRANTY OF ANY KIND, EITHER EXPRESSED

OR IMPLIED, INCLUDING, BUT NOT LIMITED TO, THE IMPLIED WARRANTIES OF MERCHANTABILITY AND FITNESS FOR A PARTICULAR PURPOSE. THE ENTIRE RISK AS TO THE QUALITY AND PERFORMANCE OF THE PROGRAM IS WITH YOU. SHOULD THE PROGRAM PROVE DEFECTIVE, YOU ASSUME THE COST OF ALL NECESSARY SERVICING, REPAIR OR CORRECTION.

12. IN NO EVENT UNLESS REQUIRED BY APPLICABLE LAW OR AGREED TO IN WRITING WILL ANY COPYRIGHT HOLDER, OR ANY OTHER PARTY WHO MAY MODIFY AND/OR REDISTRIBUTE THE PROGRAM AS PERMITTED ABOVE, BE LIABLE TO YOU FOR DAMAGES, INCLUDING ANY GENERAL, SPECIAL, INCIDENTAL OR CONSEQUENTIAL DAMAGES ARISING OUT OF THE USE OR INABILITY TO USE THE PROGRAM (INCLUDING BUT NOT LIMITED TO LOSS OF DATA OR DATA BEING RENDERED INACCURATE OR LOSSES SUSTAINED BY YOU OR THIRD PARTIES OR A FAILURE OF THE PROGRAM TO OPERATE WITH ANY OTHER PROGRAMS), EVEN IF SUCH HOLDER OR OTHER PARTY HAS BEEN ADVISED OF THE POSSIBILITY OF SUCH DAMAGES.

END OF TERMS AND CONDITIONS

How to Apply These Terms to Your New Programs

If you develop a new program, and you want it to be of the greatest possible use to the public, the best way to achieve this is to make it free software which everyone can redistribute and change under these terms.

To do so, attach the following notices to the program. It is safest to attach them to the start of each source file to most effectively convey the exclusion of warranty; and each file should have at least the "copyright" line and a pointer to where the full notice is found.

```
<one line to give the program's name and a brief idea of what it does.>  
Copyright (C) <year> <name of author>
```

```
This program is free software; you can redistribute it and/or modify  
it under the terms of the GNU General Public License as published by  
the Free Software Foundation; either version 2 of the License, or  
(at your option) any later version.
```

```
This program is distributed in the hope that it will be useful,  
but WITHOUT ANY WARRANTY; without even the implied warranty of  
MERCHANTABILITY or FITNESS FOR A PARTICULAR PURPOSE. See the  
GNU General Public License for more details.
```

```
You should have received a copy of the GNU General Public License  
along with this program; if not, write to the Free Software  
Foundation, Inc., 51 Franklin St, Fifth Floor, Boston, MA 02110-1301 USA
```

Also add information on how to contact you by electronic and paper mail.

If the program is interactive, make it output a short notice like this when it starts in an interactive mode:

Gnomovision version 69, Copyright (C) year name of author
Gnomovision comes with ABSOLUTELY NO WARRANTY; for details type `show w'.
This is free software, and you are welcome to redistribute it
under certain conditions; type `show c' for details.

The hypothetical commands `show w' and `show c' should show the appropriate parts of the General Public License. Of course, the commands you use may be called something other than `show w' and `show c'; they could even be mouse-clicks or menu items--whatever suits your program.

You should also get your employer (if you work as a programmer) or your school, if any, to sign a "copyright disclaimer" for the program, if necessary. Here is a sample; alter the names:

Yoyodyne, Inc., hereby disclaims all copyright interest in the program
'Gnomovision' (which makes passes at compilers) written by James Hacker.

<signature of Ty Coon>, 1 April 1989
Ty Coon, President of Vice

This General Public License does not permit incorporating your program into proprietary programs. If your program is a subroutine library, you may consider it more useful to permit linking proprietary applications with the library. If this is what you want to do, use the GNU Library General Public License instead of this License.

** riscv32-esp-elf; version esp-2021r2-patch3-8.4.0 -- <https://github.com/espressif/crosstool-NG>
Copyright (C) 1988-2016 Free Software Foundation, Inc.

* Package riscv32-esp-elf's source code may be found at:
https://amazon-source-code-downloads.s3.amazonaws.com/Alexa_Connect_Kit/riscv32-esp-elf-gcc8_4_0-esp-2021r2-patch3-linux-arm64.tar.gz

GCC RUNTIME LIBRARY EXCEPTION

Version 3.1, 31 March 2009

General information: <http://www.gnu.org/licenses/gcc-exception.html>

Copyright (C) 2009 Free Software Foundation, Inc. <https://linkprotect.cudasvc.com?url?a=http%3a%2f%2ffsf.org%2f&c=E,1jtEKsR8b1Oak5ejmZjhgPwqIRn_Z3oye5qciYZHO6Z0F7cdB7zOMlvVjxnaWFnK78fY6DchFuhJXjXURlKooj-uNintE12wUJ-hQOZ0xLJhNSVW8&typo=1>
Everyone is permitted to copy and distribute verbatim copies of this license document, but changing it is not allowed.

This GCC Runtime Library Exception ("Exception") is an additional permission under section 7 of the GNU General Public License, version 3 ("GPLv3"). It applies to a given file (the "Runtime Library") that bears a notice placed by

the copyright holder of the file stating that the file is governed by GPLv3 along with this Exception.

When you use GCC to compile a program, GCC may combine portions of certain GCC header files and runtime libraries with the compiled program. The purpose of this Exception is to allow compilation of non-GPL (including proprietary) programs to use, in this way, the header files and runtime libraries covered by this Exception.

0. Definitions.

A file is an “Independent Module” if it either requires the Runtime Library for execution after a Compilation Process, or makes use of an interface provided by the Runtime Library, but is not otherwise based on the Runtime Library.

“GCC” means a version of the GNU Compiler Collection, with or without modifications, governed by version 3 (or a specified later version) of the GNU General Public License (GPL) with the option of using any subsequent versions published by the FSF.

“GPL-compatible Software” is software whose conditions of propagation, modification and use would permit combination with GCC in accord with the license of GCC.

“Target Code” refers to output from any compiler for a real or virtual target processor architecture, in executable form or suitable for input to an assembler, loader, linker and/or execution phase. Notwithstanding that, Target Code does not include data in any format that is used as a compiler intermediate representation, or used for producing a compiler intermediate representation.

The “Compilation Process” transforms code entirely represented in non-intermediate languages designed for human-written code, and/or in Java Virtual Machine byte code, into Target Code. Thus, for example, use of source code generators and preprocessors need not be considered part of the Compilation Process, since the Compilation Process can be understood as starting with the output of the generators or preprocessors.

A Compilation Process is “Eligible” if it is done using GCC, alone or with other GPL-compatible software, or if it is done without using any work based on GCC. For example, using non-GPL-compatible Software to optimize any GCC intermediate representations would not qualify as an Eligible Compilation Process.

1. Grant of Additional Permission.

You have permission to propagate a work of Target Code formed by combining the Runtime Library with Independent Modules, even if such propagation would otherwise violate the terms of GPLv3, provided that all Target Code was generated by Eligible Compilation Processes. You may then convey such a combination under terms of your choice, consistent with the licensing of the Independent Modules.

2. No Weakening of GCC Copyleft.

The availability of this Exception does not imply any general presumption that third-party software is unaffected by the copyleft requirements of the license

of GCC.

** ceedling; version 0.28.2 -- https://linkprotect.cudasvc.com/url?a=http%3a%2f%2fwww.throwtheswitch.org%2fceedling&c=E,1,Z-bGe739C6ndr7t6nhTnS4UG3WRC2ZorgR86WyQnbb7u-aSRGOohGo8gzW6wQ7w2mG054y7d25SCA1a_4JwhUgLJihc_-5FeuMj1T90VjD7zjbb1NUuVmCs,&typo=1

Copyright (c) 2007-2019 Mike Karlesky, Mark VanderVoord, Greg Williams

Permission is hereby granted, free of charge, to any person obtaining a copy of this software and associated documentation files (the "Software"), to deal in the Software without restriction, including without limitation the rights to use, copy, modify, merge, publish, distribute, sublicense, and/or sell copies of the Software, and to permit persons to whom the Software is furnished to do so, subject to the following conditions:

The above copyright notice and this permission notice shall be included in all copies or substantial portions of the Software.

The end-user documentation included with the redistribution, if any, must include the following acknowledgment: "This product includes software developed for the Unity Project, by Mike Karlesky, Mark VanderVoord, and Greg Williams and other contributors", in the same place and form as other third-party acknowledgments. Alternately, this acknowledgment may appear in the software itself, in the same form and location as other such third-party acknowledgments.

THE SOFTWARE IS PROVIDED "AS IS", WITHOUT WARRANTY OF ANY KIND, EXPRESS OR IMPLIED, INCLUDING BUT NOT LIMITED TO THE WARRANTIES OF MERCHANTABILITY, FITNESS FOR A PARTICULAR PURPOSE AND NONINFRINGEMENT. IN NO EVENT SHALL THE AUTHORS OR COPYRIGHT HOLDERS BE LIABLE FOR ANY CLAIM, DAMAGES OR OTHER LIABILITY, WHETHER IN AN ACTION OF CONTRACT, TORT OR OTHERWISE, ARISING FROM, OUT OF OR IN CONNECTION WITH THE SOFTWARE OR THE USE OR OTHER DEALINGS IN THE SOFTWARE.

** Unity; version 7d2bf62b7e6afaf38153041a9d53c21aeeca9a25 -- <https://github.com/ThrowTheSwitch/Unity/tree/7d2bf62b7e6afaf38153041a9d53c21aeeca9a25>
Copyright (c) 2007 - 2017 Unity Project by Mike Karlesky, Mark VanderVoord, and Greg Williams

The MIT License (MIT)

Copyright (c) <year> 2007-23 Mike Karlesky, Mark VanderVoord, Greg Williams

Permission is hereby granted, free of charge, to any person obtaining a copy

of this software and associated documentation files (the "Software"), to deal in the Software without restriction, including without limitation the rights to use, copy, modify, merge, publish, distribute, sublicense, and/or sell copies of the Software, and to permit persons to whom the Software is furnished to do so, subject to the following conditions:

The above copyright notice and this permission notice shall be included in all copies or substantial portions of the Software.

THE SOFTWARE IS PROVIDED "AS IS", WITHOUT WARRANTY OF ANY KIND, EXPRESS OR IMPLIED, INCLUDING BUT NOT LIMITED TO THE WARRANTIES OF MERCHANTABILITY, FITNESS FOR A PARTICULAR PURPOSE AND NONINFRINGEMENT. IN NO EVENT SHALL THE AUTHORS OR COPYRIGHT HOLDERS BE LIABLE FOR ANY CLAIM, DAMAGES OR OTHER LIABILITY, WHETHER IN AN ACTION OF CONTRACT, TORT OR OTHERWISE, ARISING FROM, OUT OF OR IN CONNECTION WITH THE SOFTWARE OR THE USE OR OTHER DEALINGS IN THE SOFTWARE.

** nghttp2; version 1.41.0 -- <https://github.com/nghttp2/nghttp2>
Copyright (c) 2012, 2014, 2015, 2016 Tatsuhiro Tsujikawa

Copyright (c) 2012, 2014, 2015, 2016 nghttp2 contributors

The MIT License

Copyright (c) 2012, 2014, 2015, 2016 Tatsuhiro Tsujikawa

Copyright (c) 2012, 2014, 2015, 2016 nghttp2 contributors

Permission is hereby granted, free of charge, to any person obtaining a copy of this software and associated documentation files (the "Software"), to deal in the Software without restriction, including without limitation the rights to use, copy, modify, merge, publish, distribute, sublicense, and/or sell copies of the Software, and to permit persons to whom the Software is furnished to do so, subject to the following conditions:

The above copyright notice and this permission notice shall be

Although libwebsockets is available under a permissive license, it does not change the reality of dealing with large lumps of external code... if your copy diverges it is guaranteed to contain security problems after a while and can be very painful to pick backports (especially since historically, we are very hot on cleaning and refactoring the codebase). The least painful and lowest risk way remains sending your changes and fixes upstream to us so you can easily use later releases and fixes.

MIT License applied to libwebsockets:

<https://opensource.org/licenses/MIT>

Permission is hereby granted, free of charge, to any person obtaining a copy of this software and associated documentation files (the "Software"), to deal in the Software without restriction, including without limitation the rights to use, copy, modify, merge, publish, distribute, sublicense, and/or sell copies of the Software, and to permit persons to whom the Software is furnished to do so, subject to the following conditions:

The above copyright notice and this permission notice shall be included in all copies or substantial portions of the Software.

THE SOFTWARE IS PROVIDED "AS IS", WITHOUT WARRANTY OF ANY KIND, EXPRESS OR IMPLIED, INCLUDING BUT NOT LIMITED TO THE WARRANTIES OF MERCHANTABILITY, FITNESS FOR A PARTICULAR PURPOSE AND NONINFRINGEMENT. IN NO EVENT SHALL THE AUTHORS OR COPYRIGHT HOLDERS BE LIABLE FOR ANY CLAIM, DAMAGES OR OTHER LIABILITY, WHETHER IN AN ACTION OF CONTRACT, TORT OR OTHERWISE, ARISING FROM, OUT OF OR IN CONNECTION WITH THE SOFTWARE OR THE USE OR OTHER DEALINGS IN THE SOFTWARE.

** tinycbor; version 0.5.2 -- <https://github.com/intel/tinycbor>

Copyright (c) 2017 Intel Corporation

** aws_iot_sdk; version v4_beta:sha 6f7357a66ff51dc99603e5075cb95b0ef81cfd82 -- <https://github.com/aws/aws-iot-device-sdk-embedded-C>

Copyright (c) 2018 Amazon Web Services

** http-parser; version 2.9.3 -- <https://github.com/nodejs/http-parser>

Copyright Joyent, Inc. and other Node contributors.

** JSMN; version 1.0.0 -- https://linkprotect.cudasvc.com/url?a=https%3a%2f%2fzserge.com%2fjsmn.html&c=E,1,tpeXYpdXjB39I5MgXbMXhzQT2QCip8LILgsu6mQHaB6iwEva_TO9nP6A5HnLULwVP_GklPjP_n0tn-4zyDT2bKH10cj_vj1BNKM6c7g_VEHMDA,,&typo=1

Copyright (c) 2010 Serge A. Zaitsev

** cJSON; version 1.7.12 -- <https://github.com/DaveGamble/cJSON>

Copyright (c) 2009-2017 Dave Gamble and cJSON contributors

** bluez-alsa; version 4.0.0 -- <https://github.com/Arkq/bluez-alsa>

Copyright (c) 2016-2020 Arkadiusz Bokowy <arkadiusz.bokowy@gmail.com>

** http-parser; version 2.9.3 -- <https://github.com/nodejs/http-parser>

Copyright Joyent, Inc. and other Node contributors.

** aws_iot_ota; version 3.3.0 -- <https://docs.aws.amazon.com/freertos/latest/userguide/ota-update-library.html>

Copyright (c) 2019-2022 Amazon Web Services

** Amazon FreeRTOS; version 10.3.1 -- <https://aws.amazon.com/freertos/>

Copyright (C) 2017 https://linkprotect.cudasvc.com/url?a=https%3a%2f%2fAmazon.com&c=E,1,_2227N4RnXurcUoyJpdxsdLnmtraaumzXIheSEQfm-k4I9n8ds9O5Uvt6sf_qh3C4lmvLyfTusiJxP1c2bhKaa41UwTsyDcPEYKEugbC3gPlcABCQyyjh5vFug,,&typo=1, Inc. or its affiliates. All Rights Reserved.

Copyright (C) 2020 https://linkprotect.cudasvc.com/url?a=https%3a%2f%2fAmazon.com&c=E,1,ki3dOBMNUWbjCxPGqGsE2UYx1EO9EpVv30Cq_zTB-qKFGJU1DyrqPjfbo0AqUX8PfZjRmOzJFg_X8KV-ZS0eY9L2459QjR-zmpdhSissjswihA,,&typo=1, Inc. or its affiliates. All Rights Reserved.

Permission is hereby granted, free of charge, to any person obtaining a copy of this software and associated documentation files (the "Software"), to deal in the Software without restriction, including without limitation the rights to use, copy, modify, merge, publish, distribute, sublicense, and/or sell copies of the Software, and to permit persons to whom the Software is furnished to do so, subject to the following conditions:

The above copyright notice and this permission notice shall be included in all copies or substantial portions of the Software.

THE SOFTWARE IS PROVIDED "AS IS", WITHOUT WARRANTY OF ANY KIND, EXPRESS OR IMPLIED, INCLUDING BUT NOT LIMITED TO THE WARRANTIES OF MERCHANTABILITY, FITNESS FOR A PARTICULAR PURPOSE AND NONINFRINGEMENT. IN NO EVENT SHALL THE AUTHORS OR COPYRIGHT HOLDERS BE LIABLE FOR ANY CLAIM, DAMAGES OR OTHER LIABILITY, WHETHER IN AN ACTION OF CONTRACT, TORT OR OTHERWISE, ARISING FROM, OUT OF OR IN CONNECTION WITH THE SOFTWARE OR THE USE OR OTHER DEALINGS IN THE SOFTWARE.

** openssl; version 1.1.1l -- https://linkprotect.cudasvc.com/url?a=https%3a%2f%2fwww.openssl.org%2fsource%2f&c=E,1,3c3GYgNr2wP1gzjg7Pb3vduAcA19MVe8cCGol29qGA2djX9nkAl5hn1jeDf3s-axbvs0QMt2WViJdmN8297xe7F6S7-YsoaeTrYZyq_wnHF6Fg3j8QrjBzz1uUCe&typo=1
/* Copyright (C) 1995-1998 Eric Young (eay@cryptsoft.com)

LICENSE ISSUES
=====

The OpenSSL toolkit stays under a double license, i.e. both the conditions of the OpenSSL License and the original SSLeay license apply to the toolkit. See below for the actual license texts.

OpenSSL License

/* =====
* Copyright (c) 1998-2019 The OpenSSL Project. All rights reserved.
*
* Redistribution and use in source and binary forms, with or without



- * modification, are permitted provided that the following conditions
- * are met:
- *
- * 1. Redistributions of source code must retain the above copyright
- * notice, this list of conditions and the following disclaimer.
- *
- * 2. Redistributions in binary form must reproduce the above copyright
- * notice, this list of conditions and the following disclaimer in
- * the documentation and/or other materials provided with the
- * distribution.
- *
- * 3. All advertising materials mentioning features or use of this
- * software must display the following acknowledgment:
- * "This product includes software developed by the OpenSSL Project
- * for use in the OpenSSL Toolkit. ([https://linkprotect.cudasvc.com/](https://linkprotect.cudasvc.com/url?a=http%3a%2f%2fwww.openssl.org%2f&c=E,1,a-k7cbXLhHfl-SiV2d_fmRAZIOJrd1bmAmVTNVBn1GodtmXbT2TZhUMHHS8SQ5XQ40KUwkVCQAHC_Sbecz2TKreqb2vdQUMOr_iBWro4&typo=1))
- * url?a=http%3a%2f%2fwww.openssl.org%2f&c=E,1,a-k7cbXLhHfl-SiV2d_
- * fmRAZIOJrd1bmAmVTNVBn1GodtmXbT2TZhUMHHS8SQ5XQ40KUwkVCQAHC_
- * Sbecz2TKreqb2vdQUMOr_iBWro4&typo=1)"
- *
- * 4. The names "OpenSSL Toolkit" and "OpenSSL Project" must not be used to
- * endorse or promote products derived from this software without
- * prior written permission. For written permission, please contact
- * openssl-core@openssl.org.
- *
- * 5. Products derived from this software may not be called "OpenSSL"
- * nor may "OpenSSL" appear in their names without prior written
- * permission of the OpenSSL Project.
- *
- * 6. Redistributions of any form whatsoever must retain the following
- * acknowledgment:
- * "This product includes software developed by the OpenSSL Project
- * for use in the OpenSSL Toolkit ([https://linkprotect.cudasvc.com/](https://linkprotect.cudasvc.com/url?a=http%3a%2f%2fwww.openssl.org%2f&c=E,1,15fVrhJxYaxTijO6Szl-xIG9rIWJZ-uR63XrqKIFofsPA6gZv5hYcZY-FOjDrnL_5W4pZ06oWZJ-fVAweNceA-CvLaXCdTjmmjXoZHQcYWjmHiDrwCatKEVDjg,,&typo=1))
- * url?a=http%3a%2f%2fwww.openssl.org%2f&c=E,1,15fVrhJxYaxTijO6Szl-xIG9rIWJZ-
- * uR63XrqKIFofsPA6gZv5hYcZY-FOjDrnL_5W4pZ06oWZJ-fVAweNceA-CvLaXCdTjmmjXoZHQcYWj
- * mHiDrwCatKEVDjg,,&typo=1)"
- *
- * THIS SOFTWARE IS PROVIDED BY THE OpenSSL PROJECT ``AS IS'' AND ANY
- * EXPRESSED OR IMPLIED WARRANTIES, INCLUDING, BUT NOT LIMITED TO, THE
- * IMPLIED WARRANTIES OF MERCHANTABILITY AND FITNESS FOR A PARTICULAR
- * PURPOSE ARE DISCLAIMED. IN NO EVENT SHALL THE OpenSSL PROJECT OR
- * ITS CONTRIBUTORS BE LIABLE FOR ANY DIRECT, INDIRECT, INCIDENTAL,
- * SPECIAL, EXEMPLARY, OR CONSEQUENTIAL DAMAGES (INCLUDING, BUT
- * NOT LIMITED TO, PROCUREMENT OF SUBSTITUTE GOODS OR SERVICES;
- * LOSS OF USE, DATA, OR PROFITS; OR BUSINESS INTERRUPTION)
- * HOWEVER CAUSED AND ON ANY THEORY OF LIABILITY, WHETHER IN CONTRACT,
- * STRICT LIABILITY, OR TORT (INCLUDING NEGLIGENCE OR OTHERWISE)
- * ARISING IN ANY WAY OUT OF THE USE OF THIS SOFTWARE, EVEN IF ADVISED
- * OF THE POSSIBILITY OF SUCH DAMAGE.
- * =====
- *
- * This product includes cryptographic software written by Eric Young
- * (eay@cryptsoft.com). This product includes software written by Tim



* Hudson (tjh@cryptsoft.com).

*

*/

Original SSLeay License

/* Copyright (C) 1995-1998 Eric Young (eay@cryptsoft.com)

* All rights reserved.

*

* This package is an SSL implementation written

* by Eric Young (eay@cryptsoft.com).

* The implementation was written so as to conform with Netscapes SSL.

*

* This library is free for commercial and non-commercial use as long as

* the following conditions are aheared to. The following conditions

* apply to all code found in this distribution, be it the RC4, RSA,

* lhash, DES, etc., code; not just the SSL code. The SSL documentation

* included with this distribution is covered by the same copyright terms

* except that the holder is Tim Hudson (tjh@cryptsoft.com).

*

* Copyright remains Eric Young's, and as such any Copyright notices in

* the code are not to be removed.

* If this package is used in a product, Eric Young should be given attribution

* as the author of the parts of the library used.

* This can be in the form of a textual message at program startup or

* in documentation (online or textual) provided with the package.

*

* Redistribution and use in source and binary forms, with or without

* modification, are permitted provided that the following conditions

* are met:

* 1. Redistributions of source code must retain the copyright

* notice, this list of conditions and the following disclaimer.

* 2. Redistributions in binary form must reproduce the above copyright

* notice, this list of conditions and the following disclaimer in the

* documentation and/or other materials provided with the distribution.

* 3. All advertising materials mentioning features or use of this software

* must display the following acknowledgement:

* "This product includes cryptographic software written by

* Eric Young (eay@cryptsoft.com)"

* The word 'cryptographic' can be left out if the rouines from the library

* being used are not cryptographic related :-).

* 4. If you include any Windows specific code (or a derivative thereof) from

* the apps directory (application code) you must include an acknowledgement:

* "This product includes software written by Tim Hudson (tjh@cryptsoft.com)"

*

* THIS SOFTWARE IS PROVIDED BY ERIC YOUNG ``AS IS'' AND

* ANY EXPRESS OR IMPLIED WARRANTIES, INCLUDING, BUT NOT LIMITED TO, THE

* IMPLIED WARRANTIES OF MERCHANTABILITY AND FITNESS FOR A PARTICULAR PURPOSE

* ARE DISCLAIMED. IN NO EVENT SHALL THE AUTHOR OR CONTRIBUTORS BE LIABLE

* FOR ANY DIRECT, INDIRECT, INCIDENTAL, SPECIAL, EXEMPLARY, OR CONSEQUENTIAL

* DAMAGES (INCLUDING, BUT NOT LIMITED TO, PROCUREMENT OF SUBSTITUTE GOODS

* OR SERVICES; LOSS OF USE, DATA, OR PROFITS; OR BUSINESS INTERRUPTION)
* HOWEVER CAUSED AND ON ANY THEORY OF LIABILITY, WHETHER IN CONTRACT, STRICT
* LIABILITY, OR TORT (INCLUDING NEGLIGENCE OR OTHERWISE) ARISING IN ANY WAY
* OUT OF THE USE OF THIS SOFTWARE, EVEN IF ADVISED OF THE POSSIBILITY OF
* SUCH DAMAGE.

*
* The licence and distribution terms for any publically available version or
* derivative of this code cannot be changed. i.e. this code cannot simply be
* copied and put under another distribution licence
* [including the GNU Public Licence.]
*/

** nanopb; version 0.3.9.8 -- <https://github.com/nanopb/nanopb>
Copyright (c) 2011 Petteri Aimonen <[https://linkprotect.cudasvc.com/
url=https%3a%2f%2fnanopb.mail.kapsi.fi&c=E,1,2hypNHuTgPxrUgBCZEpERyFD4zuO3Q-
9gtCpIXYQSN6NTX4LHqHAKfg--rBwsiMvles_5iWWGgWBWDRVrXKlePxrke1yaP9tl2COvKo3kvt3
t50pVZaw5A,,&typo=1](mailto:jpa@https://linkprotect.cudasvc.com?url=https%3a%2f%2fnanopb.mail.kapsi.fi&c=E,1,2hypNHuTgPxrUgBCZEpERyFD4zuO3Q-9gtCpIXYQSN6NTX4LHqHAKfg--rBwsiMvles_5iWWGgWBWDRVrXKlePxrke1yaP9tl2COvKo3kvt3t50pVZaw5A,,&typo=1)>

This software is provided 'as-is', without any express or implied warranty. In no event will the authors be held liable for any damages arising from the use of this software.

Permission is granted to anyone to use this software for any purpose, including commercial applications, and to alter it and redistribute it freely, subject to the following restrictions:

1. The origin of this software must not be misrepresented; you must not claim that you wrote the original software. If you use this software in a product, an acknowledgment in the product documentation would be appreciated but is not required.
2. Altered source versions must be plainly marked as such, and must not be misrepresented as being the original software.
3. This notice may not be removed or altered from any source distribution.