

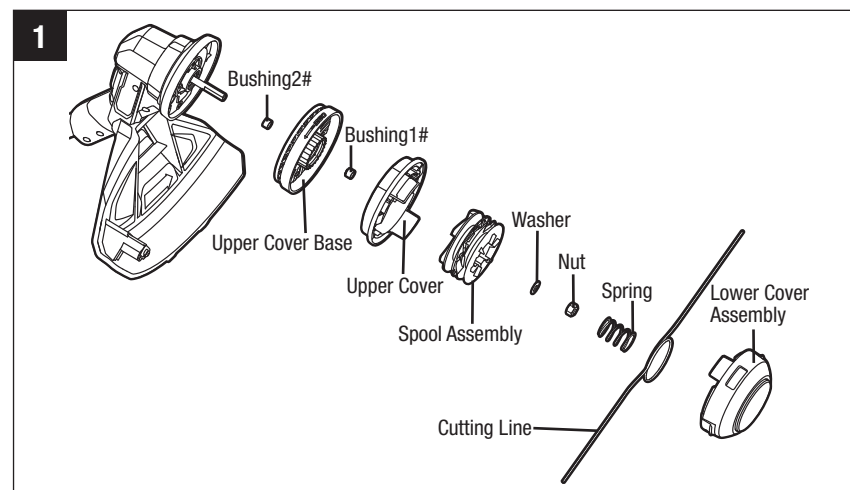


OPERATING MANUAL REPLACEMENT LINE TRIMMER HEAD MODEL NUMBER AH1522

This Replacement Line Trimmer Head is exclusively compatible with EGO POWER+ Line Trimmer ST1400E-ST.

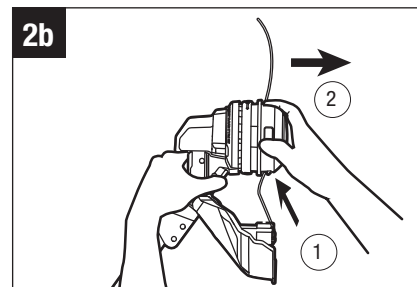
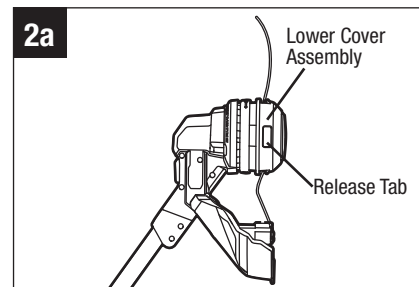
⚠ DANGER: If the head loosens after it is fixed in position, replace it immediately. Never use a trimmer with a loose cutting attachment. Replace a cracked, damaged or worn out cutting head immediately, even if damage is limited to superficial cracks. Such attachments may shatter at high speed and cause serious injury.

⚠ WARNING: Always remove the battery pack from the product when you are assembling parts, making adjustments, cleaning, or when the product is not in use.

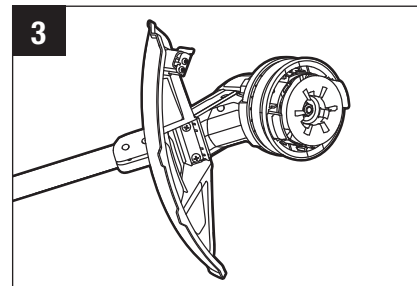


REMOVE THE TRIMMER HEAD

1. Remove the battery pack from the trimmer.



2. Press the release tabs on the trimmer head and remove the lower cover assembly of the trimmer head by pulling it straight out (see Fig. 2a & 2b).
3. Remove the cutting line from the trimmer head (Fig. 3).
4. Remove the spring from the spool assembly, if necessary. Save it for reassembly.

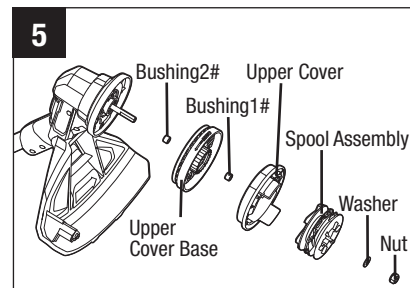
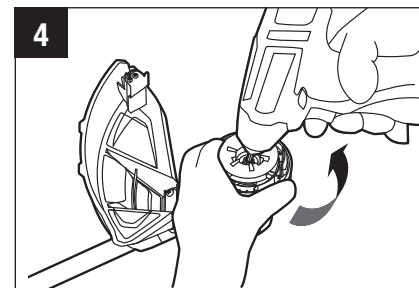


5. Wear gloves. Use one hand to grasp the spool assembly to stabilize it, and use the other hand to hold an impact wrench (not included) to loosen the nut in a counterclockwise direction (Fig. 4).

6. Remove the nut, washer, spool assembly, upper cover, bushing1# and Upper Cover Base, from the motor shaft (Fig. 5).

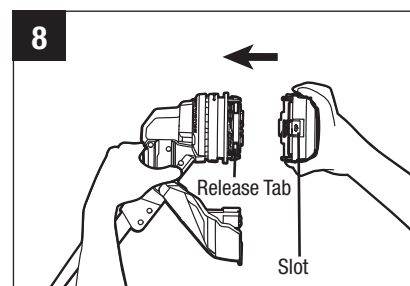
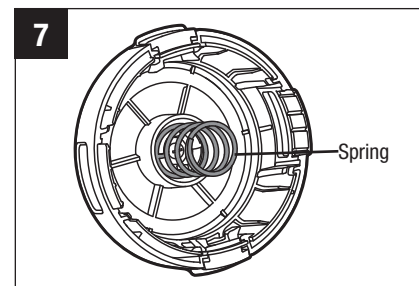
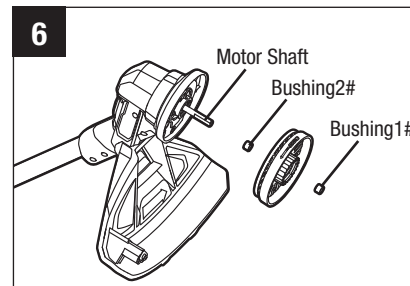
NOTICE: Bushing2# easily fall off the motor shaft, so take care to save them for reassembly.

7. Replace with a new trimmer head and mount it in following steps.



INSTALL THE NEW TRIMMER HEAD

1. Mount the bushing2# in motor shaft and mount the upper cover base assembly into place (Fig. 6).
2. Mount the bushing 1#, upper cover, spool assembly, washer and nut in that order. Use an impact wrench on the nut to tighten it.
3. Insert the spring into the slot in the lower cover assembly (Fig. 7).
4. With one hand holding the trimmer, use the other hand to grasp the lower cover assembly and align the slots in the lower cover assembly with the release tabs. Press the lower cover assembly until it snaps into place, at which time you will hear a distinct click sound (Fig. 8).
5. Start the tool to see whether the line trimmer will work normally. If it does not, reassemble as described above.



LINE REPLACEMENT

⚠ WARNING: Never use metal-reinforced line, wire, or rope, etc. These can break off and become dangerous projectiles.

⚠ WARNING: Always use the recommended nylon cutting line with a diameter that does not exceed 2.4 mm. Using line other than that specified may cause the tool to overheat or become damaged.

The line trimmer is equipped with an advanced POWERLOAD™ system. The cutting line can be wound onto the spool simply by pressing a single button. Loading a full spool can usually be completed in 12 seconds. Avoid repeated operation of the winding system in rapid succession to reduce the possibility of motor damage.

1. Remove the battery pack from the trimmer.
2. Cut one piece of cutting line 4 m long.
3. Insert the line into the eyelet (Fig.9) and push the line until the end of the line comes out of the opposite eyelet.

NOTICE: It is not necessary to align the eyelets in order to insert the cutting line. If the line cannot be inserted into the eyelet, mount the battery pack onto the trimmer, then press the line-loading button

briefly to release the lower cover.

4. Remove the battery if it has been mounted onto the trimmer in step 3.
5. Pull the line from the other side until equal lengths of the line appear on both sides of the trimmer head(Fig. 10).
6. Install the battery pack onto the line trimmer.
7. Press and hold the line-loading button to start the line-winding motor. The line will be wound into the trimmer head continuously (Fig. 11).
8. Watch the remaining line length carefully. Prepare to release the button as soon as approximately 17.8 cm of line are left on each side. Briefly press the line loading button to adjust the length until 13 cm of the line is showing on each side.
9. Push down on the Lower Cover Assembly while pulling on the lines to manually advance the line in order to check for proper assembly of the cutting line.

