

Manual of
HOTO 35in1 Rotary Tool Kit

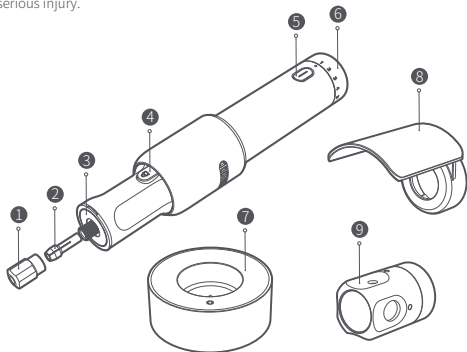
HOTO

01 Product Overview

Please read this manual carefully before using the product and keep it for future reference.

Thanks for using HOTO 35in1 Rotary Tool Kit.

This product is used as grinding miller, sand mill, steel brush, polishing machine, carving machine or grinding machine. Please read all security warnings, instructions, legends and specifications provided about this electric power tool. Violations of any instructions below may result in electric shock or serious injury.



① Fasten Nut

② Clamping Head

③ LED Fill Light

④ Shaft Lock Button

⑤ Power button
(with the power indicator light)

⑥ Rotational Speed Regulating Ring

⑦ Charging Base

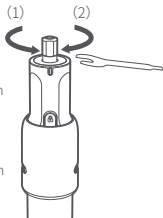
⑧ Dust Cover

⑨ Pet Nail Grinder

02 How to Use

Instructions for accessories installation

- Press the shaft lock button ④, and use your hand to turn the main shaft until the main shaft is locked. Don't use the shaft lock when the tool is running.
- Put the wrench around the locking nut as shown in the image. Rotate the wrench along the direction of the arrow (1), and then loosen (but not detach) the chuck nut until accessories can be fixed in. After installing the accessories, rotate the chuck nut along the direction of the arrow (2) as shown in the image until the accessories are locked. It is prohibited to use machine inertia to lock the chuck nut. Please press the power button to use it after confirming that the accessories are locked.



Main switch

- Pressing the power button ⑤ once, the indicator light turns on, and the motor starts to rotate.
- Pressing the power button ⑤ again, the indicator light turns off, and the motor stops rotating.

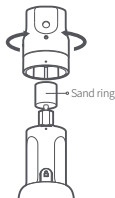
Dust cover

- Align the dot marking of the dust cover with that of the main body, and connect the cover to the front end of the body. Please confirm that the clip is firmly secured.
- The dust cover can be used to protect the user from injuries caused by dust, and shattered or loosened accessories.



Pet nail grinder

- Please make use of the sand ring accessory when using the nail grinding head.
- Align the dot marking of the nail grinding head with that of the main body, and connect the head to the front end of the body. Please confirm that the clip is firmly secured.
- The circular hole to fit pet nails can be regulated to the appropriate size by rotating the black section of the nail grinding head.
- Please operate at low speed, do not apply excessive pressure, and be careful not to hurt the pet.



Rotational speed regulation

- Regulate the rotational speed through the rotational speed regulating ring (6). Speed may be regulated to an appropriate rotational speed before turning on the tool. Please practice first on similar objects.

Functions	Accessory description	Cork	Hard-wood	Plastic	Iron and steel	Aluminum, copper	Seashell, stone	Ceramics	Glass
Sand grinding	Sand ring	2-5	2-5	2-5	2-5	2-5	2-5	2-5	/
Grinding/sharpening	Grinding head	/	/	4-5	4-5	4-5	4-5	4-5	/
Drill hole	Drilling bit	4-5	4-5	4-5	/	/	/	/	/
Carving	Diamond card grinding	3-5	3-5	3-5	3-5	3-5	3-5	3-5	3-5
	Milling cutter	3-5	3-5	3-5	/	/	/	/	/
Cutting	Diamond blade	/	/	/	/	4-5	4-5	4-5	4-5
	Cutting blade	/	/	/	4-5	4-5	/	/	/
Cleaning/polishing	Stainless steel flat brush	1-4	1-4	1-4	1-4	1-4	1-4	1-4	1-4
	Felted wool/dabber	3-5	3-5	3-5	3-5	3-5	3-5	3-5	3-5

Attention

Do not set the speed above '3' when using the steel brush.

Instructions for charging

- When the turn-on button ⑤ shows a red light, it indicates that remaining battery is less than 10%. When the red light flickers, remaining battery is under 5%. If so, place the rotary tool on the charging base ⑦ to charge it.
- During the charging process, the white light of the power button ⑤ is intermittent. When fully charged, power button will show a continuous white light.

03 Instructions for Operating Security

1. This electric power tool can be used as grinding miller, sand mill, steel brush, polishing machine, carving machine or grinding machine. Please read all security warnings, instructions, legends and specifications provided about this electric power tool. Violations of any instructions below may result in electric shock or serious injury.
2. Do not use the accessories not specifically designed and recommended by the tool manufacturer. Even if the accessories can be connected with your electric power tool, safe operation cannot be guaranteed.
3. The normal speed of grinding accessories shall at least be equal to the maximum speed marked on the electric power tool. If the working speed of grinding accessories exceeds the normal speed, burst and splash may happen.
4. The outer diameter and thickness of accessories must be within the nominal capacity of your electric power tool. Accessories not consistent with specifications cannot be completely controlled.
5. Dabbers of the sand ring, cutting blade or other accessories must be suitable for being set on the main shaft or clamp head of the electric power tool. If accessories do not match the mounting hardware of the electric power tool, they will be unstable, over-vibrate, and be out of control.

6. Sand ring, cutting blade or other accessories to install the dabber must be totally inserted into the clamp cover or three-jaw chuck. If the dabber is not adequate to support and/or the length of the sand ring is too long after extension, the installed sand ring may get loose and eject at a high speed.
7. Don't use damaged accessories. Check the accessories before use (e.g. check whether there is fragment and crack in the cutting blade; whether there is crack, fracture or excessive wear in the sand ring; and whether the steel brush is loose or the state of the metal wire). If the electric power tool or any accessory hits the ground, please check whether there is damage to the pieces, or install undamaged accessories. After checking and installing an accessory, please move yourself and others away from the plane of rotation and run the electric power tool at its maximum speed for a minute. During the process of this test, damaged accessories usually fall from the tool.
8. Wear personal protective equipment. Please wear face shield, safety inspection or safety goggles according to the applications. Please wear dust mask, hearing protection, gloves and working apron that protect the user from small abrasive and fragments of workpiece if applicable. Eye shields must be able to prevent flying chips from by different operations. Dust masks or respirators must be able to filter particles generated during operation. A long time of exposure to high intensity noise may lead to the hearing damages.
9. Please keep unrelated personnel at a safe distance away from the working area. Anyone who enters the working area must wear protective equipment. Workpiece fragments or damaged accessories may fly off and hurt the personnel close to the operating area.
10. If the cutting accessory may contact hidden wires during operation, the operator must use insulated gripping tools to hold the electric power tool. If the cutting accessory contacts live wire, exposed metal parts of the electric power tool may conduct electricity and cause electric shock to the operator.
11. Hold the tool in your hand all the time during the process of activation. When the electric motor is accelerated to the maximum speed, its reaction torque may result in the twist of the tool.
12. Wear personal protective equipment. Please wear face shield, safety inspection or safety goggles according to the applications. Please wear dust mask, hearing protection, gloves and working apron that protect the user from small abrasive and fragments of workpiece if applicable. Eye shields must be able to prevent flying chips from by different operations. Dust masks or

respirators must be able to filter particles generated during operation. A long time of exposure to high intensity noise may lead to the hearing damages.

13. Use the pincer clamp to support the workpiece when it is feasible. It is prohibited to hold a small workpiece in one hand and the tool in the other during the process of using the pincer clamp. After clamping the small workpiece with the pincer clamp, you can control the tool with one hand or two hands. During the process of cutting circular objects such as pin rod and pipe, such objects may slide and make the tool bit get stuck or bounce to the operator.

14. Do not put down the electric power tool before the accessory head completely stops operating. The rotating accessory may rub the surface and cause the tool to lose control.

15. After changing the tool bit or making any adjustments, please ensure that the chuck nut, cartridge or any other adjusted parts have been fixed safely. If the adjusting equipment is loose, it may move and lose control. The rotating accessory may be thrown out violently.

16. Don't run the tool when the electric power tool is at your side. Any accidental contact can entangle the rotating accessory with your clothes, and drag the accessory to your body.

17. Power tool air outlets need to be cleaned regularly. Electric motor fan may suck up dust into the pedestal. Too much metal powder may cause electrical accidents.

18. Do not operate the electric power tool near combustible materials. Sparks may light these materials.

19. Do not use accessories that need liquid coolant. Using water or other liquid coolants may result in electric shock or serious injury.

04 Accessory instructions

Carving and drilling



Milling cutter

For operations such as carving, trimming, and slotting, on such materials as wood, plastic, fiberglass, and soft metals. Please use the side face of a milling cutter to achieve efficient cutting.



Diamond grinding needle

It is suitable for carving, on such materials as wood, leather, jade, ceramics, glass, and metal.



Drilling bit

It is suitable for drilling, on such materials as wood, plastic, fiberglass, and soft metal.



Buffing wheel



Felt wheel

It is used for polishing. It is suitable for operations on such materials as metal, stone, and glass. Please use it with the felt wheel core bar.



Diamond cutting blade

Used for cutting. It is suitable for operations on hard materials such as stone, porcelain, ceramics, and epoxy resin. Please use it with the cutting blade core bar.



Cutting blade

It is used for cutting materials such as metal sheets, thin wood boards, and plastic plates. Please use it with the cutting blade core bar. Please perform cutting with the edge of the blade. This accessory is fragile, carefully install, and keep cutting in a straight line. Please install the dust cover when using this blade, and wear proper protective equipment.



Sand ring

Used for coarse grinding. It is suitable for operations on such materials as wood, and fiberglass. Please use it with the sand ring tension wheel.

Polishing



Corundum grinding head

It is suitable for operations such as trimming, grinding, and sanding, on such materials as metal, stone, and wood.



Disc metal brush

It is suitable for such operations as cleaning, deburring, and derusting, on such materials as metal and wood. Also suitable to reach inaccessible corners. Please use the brush with the dust cover installed, maintain rotational speed less than or equal to the third gear, and beware of steel wires that fall off and fly out.



Nylon brush

It is suitable for such operations as cleaning and polishing. Also suitable to reach inaccessible corners.

Tool and core bar



Sand ring stretching wheel

Used for installing the sand ring. Place the sand ring on the black soft rubber of the tension wheel, and tighten the top screw to fix the ring.



Core bar of the cutting blade

Used for installing the cutting blade. Rotate and remove the top screw, place a cutting blade between the two red spacers, and re-install and tighten the screw.



Core bar of felt wheel

Used for installing the felt wheel. In use, rotate the core bar into the center of the felt wheel.



Wrench

Used for fastening the front end locking nut. The rear end is used for tightening the top screw of the sand ring tension wheel, and the cutting blade core bar.



Clamping head (2.3mm)

Used for replacing the 3.2mm clamping head inside the body. It can be used for installing the 2.3mm grip bar accessory.

05 General Power Tool Safety Warnings

WARNING! Read all safety warnings, instructions, illustrations and specifications provided with this power tool. Failure to follow all instructions listed below may result in electric shock, fire and/or serious injury.

Save all warnings and instructions for future reference.

The term “power tool” in the warnings refers to your mains-operated (corded) power tool or battery-operated (cordless) power tool.

Work Area Safety

- **Keep work area clean and well lit.** Cluttered or dark areas invite accidents.
- **Do not operate power tools in explosive atmospheres, such as in the presence of flammable liquids, gases or dust.** Power tools create sparks which may ignite the dust or fumes.
- **Keep children and bystanders away while operating a power tool.** Distractions can cause you to lose control.

Electrical safety

- **Power tool plugs must match the outlet. Never modify the plug in any way.** Do not use any adapter plugs with earthed (grounded) power tools. Unmodified plugs and matching outlets will reduce risk of electric shock.
- **Avoid body contact with earthed or grounded surfaces, such as pipes, radiators, ranges and refrigerators.** There is an increased risk of electric shock if your body is earthed or grounded.
- **Do not expose power tools to rain or wet conditions.** Water entering a power tool will increase the risk of electric shock.
- **Do not abuse the cord. Never use the cord for carrying, pulling or unplugging the power tool. Keep cord away from heat, oil, sharp edges or moving parts.** Damaged or entangled cords increase the risk of electric shock.
- **When operating a power tool outdoors, use an extension cord suitable for outdoor use.** Use of a cord suitable for outdoor use reduces the risk of electric shock.
- **If operating a power tool in a damp location is unavoidable, use a residual current device (RCD) protected supply.** Use of an RCD reduces the risk of electric shock.

Personal Safety

- **Stay alert, watch what you are doing and use common sense when operating a power tool. Do not use a power tool while you are tired or under the influence of drugs, alcohol or medication.** A moment of inattention while operating power tools may result in serious personal injury.
- **Use personal protective equipment. Always wear eye protection.** Protective equipment such as a dust mask, non-skid safety shoes, hard hat or hearing protection used for appropriate conditions will reduce personal injuries.
- **Prevent unintentional starting. Ensure the switch is in the off-position before connecting to power source and/or battery pack, picking up or carrying the tool.** Carrying power tools with your finger on the switch or energising power tools that have the switch on invites accidents.
- **Remove any adjusting key or wrench before turning the power tool on.** A wrench or a key left attached to a rotating part of the power tool may result in personal injury.
- **Do not overreach. Keep proper footing and balance at all times.** This enables better control of the power tool in unexpected situations.
- **Dress properly. Do not wear loose clothing or jewellery. Keep your hair and clothing away from moving parts.** Loose clothes, jewellery or long hair can be caught in moving parts.
- **If devices are provided for the connection of dust extraction and collection facilities, ensure these are connected and properly used.** Use of dust collection can reduce dust-related hazards.
Do not let familiarity gained from frequent use of tools allow you to become complacent and ignore tool safety principles. A careless action can cause severe injury within a fraction of a second.

Power Tool Use And Care

- **Do not force the power tool. Use the correct power tool for your application.** The correct power tool will do the job better and safer at the rate for which it was designed.
- **Do not use the power tool if the switch does not turn it on and off.** Any power tool that cannot be controlled with the switch is dangerous and must be repaired.
- **Disconnect the plug from the power source and/or remove the battery pack, if detachable, from the power tool before making any adjustments, changing accessories, or storing power tools.** Such preventive safety measures reduce the risk of starting the power tool accidentally.
- **Store idle power tools out of the reach of children and do not allow persons unfamiliar with the power tool or these instructions to operate the power tool.** Power tools are dangerous in the hands of untrained users.
- **Maintain power tools and accessories. Check for misalignment or binding of moving parts, breakage of parts and any other condition that may affect the power tool's operation. If damaged, have the power tool repaired before use.** Many accidents are caused by poorly maintained power tools.
- **Use the power tool, accessories and tool bits etc. in accordance with these instructions, taking into account the working conditions and the work to be performed.** Use of the power tool for operations different from those intended could result in a hazardous situation.
- **Keep handles and grasping surfaces dry, clean and free from oil and grease.** Slippery handles and grasping surfaces do not allow for safe handling and control of the tool in unexpected situations.

Battery tool use and care

- **Recharge only with the charger specified by the manufacturer.** A charger that is suitable for one type of battery pack may create a risk of fire when used with another battery pack.
- **Use power tools only with specifically designated battery packs.** Use of any other battery packs may create a risk of injury and fire.
- **When battery pack is not in use, keep it away from other metal objects, like paper clips, coins, keys, nails, screws or other small metal objects, that can make a connection from one terminal to another.** Shorting the battery terminals together may cause burns or a fire.
- **Under abusive conditions, liquid may be ejected from the battery; avoid contact. If contact accidentally occurs, flush with water. If liquid contacts eyes, additionally seek medical help.** Liquid ejected from the battery may cause irritation or burns.
- **Do not use a battery pack or tool that is damaged or modified.** Damaged or modified batteries may exhibit unpredictable behavior resulting in fire, explosion or risk of injury.
- **Do not expose a battery pack or tool to fire or excessive temperature.** Exposure to fire or temperature above 130°C may cause explosion.
- **Follow all charging instructions and do not charge the battery pack or tool outside the temperature range specified in the instructions.** Charging improperly or at temperatures outside the specified range may damage the battery and increase the risk of fire.

Service

- **Have your power tool serviced by a qualified repair person using only identical replacement parts.** This will ensure that the safety of the power tool is maintained.
- **Never service damaged battery packs.** Service of battery packs should only be performed by the manufacturer or authorized service providers.

Safety warning of HOTO 35in1 Rotary Tool

- Hold the tool by the insulated gripping surface if the cutting and drilling accessories could contact hidden wires during operation. Were cutting and drilling accessories to contact live wires, exposed metal parts may conduct the electricity and cause electric shock to the operator.

Safety warning of tool's built-in battery

- It is prohibited to tear down, open or cut up the tool.
- It is prohibited to place the tool near heat sources or flames. Avoid storing under direct sunlight.
- It is prohibited to let short circuit happen to the exposed terminal of the tool. Do not randomly store several tools in a box or drawer so as to avoid damage to one another and short circuits caused by interaction.
- It is prohibited to let the tool suffer from mechanical impact.
- If there is battery leakage, do not let the leaked liquid contact your skin or eye directly. If it happens, you should rinse the contact site with a large amount of clean water and seek immediate medical attention.
- Do not use chargers not originally designed for this equipment.
- Keep the tool away from children.
- Do not use a battery not unspecific to this equipment.
- Keep the tool clean and dry.
- If the charging pole tip of the tool gets dirty, use a clean and dry cloth to wipe it out.
- Charge the tool before using it. Use the correct charger when you correctly charge the tool following the instructions of the manufacturer, or the instructions manual for the equipment.
- When it is not used, do not charge charge the tool for extended periods of time.
- After a long time of storage, let the tool go through several charging and discharging cycles so as to get the best performance.
- The lithium battery is optimally used in normal temperature ($20\pm 5^{\circ}\text{C}$).
- Keep the original Instructions for Use properly for future reference.
- Correct disposal of the battery.

Safety instructions for all operations

Safety warnings common for grinding, sanding, wire brushing, polishing, carving or abrasive cutting-off operations:

- a) This power tool is intended to function as a grinder, sander, wire brush, polisher, carving or cut-off tool. Read all safety warnings, instructions, illustrations and specifications provided with this power tool.
- b) Do not use accessories which are not specifically designed and recommended by the tool manufacturer.
- c) The rated speed of the grinding accessories must be at least equal to the maximum speed marked on the power tool.
- d) The outside diameter and the thickness of your accessory must be within the capacity rating of your power tool.
- e) The arbour size of wheels, sanding drums or any other accessory must properly fit the spindle or collet of the power tool.
- f) Mandrel mounted wheels, sanding drums, cutters or other accessories must be fully inserted into the collet or chuck.
- g) Do not use a damaged accessory. Before each use inspect the accessory such as abrasive wheels for chips and cracks, sanding drum for cracks, tear or excess wear, wire brush for loose or cracked wires. If power tool or accessory is dropped, inspect for damage or install an undamaged accessory. After inspecting and installing an accessory, position yourself and bystanders away from the plane of the rotating accessory and run the power tool at maximum no-load speed for one minute.
- h) Wear personal protective equipment. Depending on application, use face shield, safety goggles or safety glasses. As appropriate, wear dust mask, hearing protectors, gloves and workshop apron capable of stopping small abrasive or workpiece fragments.
- i) Keep bystanders a safe distance away from work area. Anyone entering the work area must wear personal protective equipment.
- j) Hold power tool by insulated gripping surfaces only, when performing an operation where the cutting accessory may contact hidden wiring or its own cord.
- k) Always hold the tool firmly in your hand(s) during the start-up.

- l) Use clamps to support workpiece whenever practical. Never hold a small workpiece in one hand and the tool in the other hand while in use.
- m) Position the cord clear of the spinning accessory.
- n) Never lay the power tool down until the accessory has come to a complete stop.
- o) After changing the bits or making any adjustments, make sure the collet nut, chuck or any other adjustment devices are securely tightened.
- p) Do not run the power tool while carrying it at your side.
- q) Regularly clean the power tool's air vents.
- r) Do not operate the power tool near flammable materials.
- s) Do not use accessories that require liquid coolants.



All products bearing this symbol are waste electrical and electronic equipment (WEEE as in directive 2012/19/EU) which should not be mixed with unsorted household waste. Instead, you should protect human health and the environment by handing over your waste equipment to a designated collection point for the recycling of waste electrical and electronic equipment, appointed by the government or local authorities. Correct disposal and recycling will help prevent potential negative consequences to the environment and human health. Please contact the installer or local authorities for more information about the location as well as terms and conditions of such collection points.

CE We Shanghai HOTO Technology Co., Ltd., hereby, declares that this equipment is in compliance with the applicable Directives and European Norms, and amendments.

Federal Communications Commission Supplier's Declaration of Conformity

This supplier's declaration of conformity is hereby for

Product: HOTO Lithium Electric Grinder

Model Number(s): QWLDM001

Brand/Trade: HOTO

We declare that the above mentioned device has been tested and found in compliance with CFR 47 Part 15 Regulation.

This device complies with part 15 of the FCC Rules. Operation is subject to the following two conditions: (1) This device may not cause harmful interference, and (2) this device must accept any interference received, including interference that may cause undesired operation.

Note: This equipment has been tested and found to comply with the limits for a Class B digital device, pursuant to part 15 of the FCC Rules. These limits are designed to provide reasonable protection against harmful interference in a residential installation. This equipment generates, uses and can radiate radio frequency energy and, if not installed and used in accordance with the instructions, may cause harmful interference to radio communications. However, there is no guarantee that interference will not occur in a particular installation. If this equipment does cause harmful interference to radio or television reception, which can be determined by turning the equipment off and on, the user is encouraged to try to correct the interference by one or more of the following measures:

- Reorient or relocate the receiving antenna.
- Increase the separation between the equipment and receiver.
- Connect the equipment into an outlet on a circuit different from that to which the receiver is connected.
- Consult the dealer or an experienced radio/TV technician for help.

Representative of Responsible Party for SDoC
 Company: Shanghai HOTO Technology Co., Ltd.
 Address: Building 45, No.50 Moganshan Road, Putuo District, Shanghai, China
 Country: China
 Telephone No.: 400-021-8696

Troubleshooting

Issues	Causes	Solutions
During the process of cutting and polishing, the machine stops suddenly	Continuous use of the machine with heavy work loads leads to the current to exceed protective current levels	Properly adjust the gear to a higher level
During operation, the machine stops rotating	Continued work with big heavy loads lead to automatic stop for over-heat protection or under-voltage protection	Keep the product static and cool it down, then charge the product
Accessories cannot be installed	The size of accessory does not match the clamping head	Use accessories in the accessory box or use accessories with a diameter of 3mm
Battery cannot be charged	USB cable is not plugged in properly or there is poor contact with the base	After excluding poor contact between the USB charger and adapter as an option, rotate the tool and charging base to change their angle in order to make the charging needle contact the chip in the tool. Additionally, clean the surface of the contact chip and charging needle

06 Specifications

Model: QWLDM001	Accessories:
Item Dimensions:	Clamping head: 2.35mm×1
Approx. $\phi 37.5 \times 190$ mm	Drilling bit: 3.2mm×1
Unloaded Rotational Speed:	Polishing: Sand ring×4, red corundum grinding head
Approx. 5000~25000 /min	6mm cylinder×1, red corundum grinding head 6mm
Net Weight:	coner×1, sand ring stretching wheel×1
Approx. 240 g	Milling cutter: 3mm bulb×1, 3mm cylinder×1, 3mm
Rated Voltage: 3.6 V \equiv	cone×1
Rated capacity: 2 Ah	Brush: Nylon brush×1, 19mm diameter disc metal
Battery Type:	brush×1
Lithium-ion battery	Diamond card grinding: Coarse sand spherical
Charging parameters:	grinding head×1
5 V \equiv 1 A	Polishing wheel: Felt wheel×2, core bar of felt
	wheel×1
	Cutting: Metal electrolon cutting blade with a
	diameter of 22mm×4, core bar of the cutting
	blade×1
	Wrench×1
	Dust cover×1
	Pet nail grinder×1

Manufacturer: Shanghai HOTO Technology Co., Ltd.

Address: Building 45, No. 50 Moganshan Rd, Putuo District, Shanghai, PRC, 200060.

DECLARATION OF CONFORMITY



EU Declaration of Conformity

We

Shanghai HOTO Technology Co., Ltd.

Declare that the product:
HOTO 35in1 Rotary Tool Kit / QWLDM001

Complies with the essential health and safety requirements of the following directives:

2006/42/EC The Machinery Directive

References to the following harmonized standard were made:

EN 60745-1:2009+A11:2010

EN 60745-2-23:2013

2014/30/EU Electromagnetic Compatibility directive References to the following
harmonized standard were made:

EN55014-1: 2017+A11 :2020

EN55014-2: 2015

EN IEC 61000-3-2:2019

EN 61000-3-3:2013+A1 :2019

2011/65/EU+ (EU) 2015/863 Restrictions of the Use of Certain Hazardous
Substances in Electrical and Electronic Equipment

Authorised signatory and technical file holder:

Shanghai HOTO Technology Co., Ltd.

Building 45, No.50 Moganshan Road, Shanghai, China

