



Set up with videos:

Scan QR code or visit

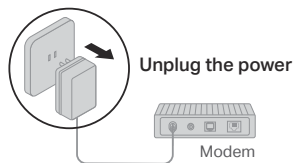
<https://www.tp-link.com/support/setup-video/#wi-fi-routers>



1 Connect the Hardware

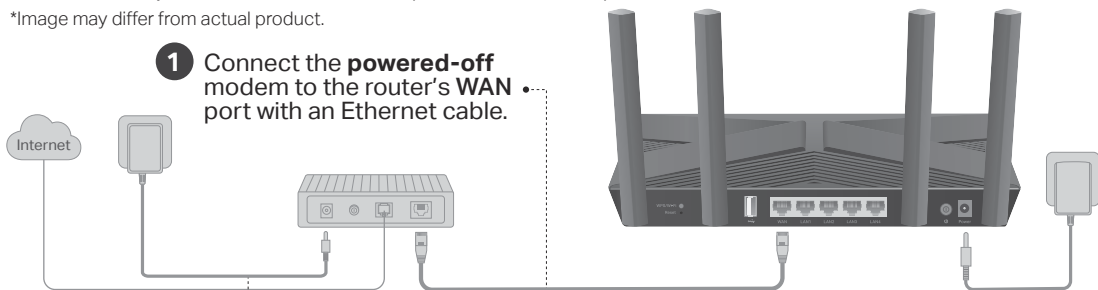


- **Unplug the power** to turn off your modem, if any, and remove the backup battery if it has one.
- Refer to **Q5 of Need Help?** to place the router for optimal Wi-Fi performance.

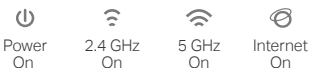


If your internet comes from an Ethernet outlet instead of a DSL / Cable / Satellite modem, connect the router's **WAN port** to it, then follow steps 3 and 4 to complete the hardware connection.

*Image may differ from actual product.



- 2 Power on the modem, and then wait about **2 minutes** for it to restart.
- 3 Connect the power adapter to the router and turn it on.
- 4 Verify that the hardware connection is correct by checking the following LEDs.

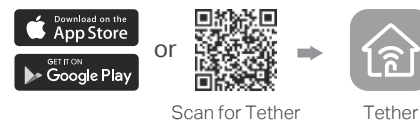


Note: If the 2.4 GHz and 5 GHz LEDs are off, press and hold the WPS/Wi-Fi button on the back for more than 2 seconds. The LEDs should turn solid on.

2 Set Up the Network

Method ONE: Via TP-Link Tether App

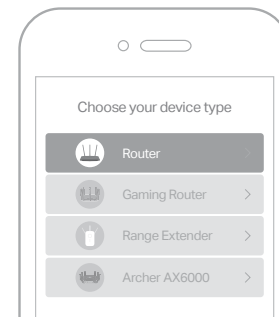
1. Download the Tether app.



2. Open the Tether app and log in with your TP-Link ID.

Note: If you don't have an account, create one first.

3. Tap the **+** button in the Tether app and select **Router > Wireless Router**. Follow the steps to complete the setup and connect to the internet.



😊 Enjoy the internet !

To enjoy a more complete service from TP-Link, bind your TP-Link ID to the router.

Method TWO: Via a Web Browser

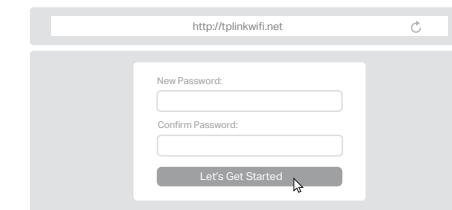
1. Connect your device to the router wirelessly or with an Ethernet cable.

The default wireless network names (SSIDs) and password are printed on the label at the bottom of the router.



2. Launch a web browser, and enter <http://tplinkwifi.net> or <http://192.168.0.1> in the address bar. Create a password to log in.

Note: If the login window does not appear, please refer to **Q1 of Need Help?** in this guide.



3. Follow the step-by-step instructions to set up the internet connection and register for the TP-Link Cloud service.

😊 Enjoy the internet !

Do More with Your Router

The router supports various features, including Access Point Mode, Guest Network, Parental Controls, QoS and more.



Access Point Mode

The router can work as an access point, transforming your existing wired network to a wireless one.



Parental Controls

Manage online time and block inappropriate content to keep families healthy online.



Guest Network

Provide Wi-Fi access for guests without disclosing your main network.



Quality of Service (QoS)

Prioritize your bandwidth needs to get a better networking experience.



USB Applications

With the USB port, it's easy to share files and media with multiple devices. Visit <https://www.tp-link.com/app/usb> to learn more about the USB applications.

For detailed instructions, refer to the router's user guide at <https://www.tp-link.com/support>.

Button Explanation

• WPS/Wi-Fi Button

WPS: Press the button for 1 second, and immediately press the WPS button on your client to start the WPS process.

Wi-Fi: Press and hold the button for more than 2 seconds, then release the button to turn on or off the wireless function of your router.

• Reset Button

Press and hold the button for about 6 seconds until the Power LED blinks to reset the router to its factory default settings.



To communicate with TP-Link users or engineers, visit <https://community.tp-link.com> to join TP-Link Community.



For technical support, replacement services, user guides, and other information, please visit <https://www.tp-link.com/support>.



If you have any suggestions or needs for our product guides, you are welcome to email techwriter@tp-link.com.cn.

- Keep the device away from water, fire, humidity or hot environments.
- Do not attempt to disassemble, repair, or modify the device. If you need service, please contact us.
- Do not use any other chargers than those recommended.
- Do not use damaged charger or USB cable to charge the device.
- Do not use the device where wireless devices are not allowed.
- Adapter shall be installed near the equipment and shall be easily accessible.

©2021 TP-Link 7106509272 REV2.0.0

Need Help?



Q1. What should I do if I can't access the web management page?

- Reboot your router and try again.
- If the computer is set to a static IP, change its settings to obtain an IP address automatically.
- Verify that <http://tplinkwifi.net> is correctly entered in the web browser. Alternatively, enter <http://192.168.0.1> or <http://192.168.1.1> in the web browser.
- Use another web browser and try again.
- Disable and enable the network adapter in use.

Q2. What should I do if I can't access the internet?

- Power off your modem for about 5 minutes, then power it on and check the internet. If your modem has more than one Ethernet port, keep other ports unconnected.
- Check if the internet is working normally by connecting a computer directly to the modem via an Ethernet cable. If it is not, contact your internet service provider.
- Log in to the web management page, and go to the **Network Map** page to check whether the internet IP address is valid or not. If it's valid, go to **Advanced > Network > Internet**, click **Advanced Settings**, select **Use the Following DNS Addresses**, set the primary DNS to 8.8.8.8, and set the secondary DNS to 8.8.4.4. If it is not, check the hardware connection or contact your internet service provider.
- For cable modem users, log in to the web management page of the router and go to **Advanced > Network > Internet > MAC Clone**. Select **Clone Current Device MAC** and click **SAVE**. Then reboot both the modem and the router.

Q3. What should I do if I forget my wireless password?

- If you have not changed the default wireless password, it can be found on the label at the bottom of the router.
- Connect a computer directly to the router using an Ethernet cable. Log in to the router's web management page at <http://tplinkwifi.net>, and go to the **Wireless** page to retrieve or reset your wireless password.

Q4. What should I do if I forget my web management page password?

- If you are using a TP-Link ID to log in, click **Forgot password** on the login page and then follow the instructions to reset it.
- Alternatively, press and hold the **Reset** button on the back for about 6 seconds until the Power LED blinks. Then visit <http://tplinkwifi.net> to create a new login password.

Q5. How should I position my router for optimal Wi-Fi performance?

- Don't place your router in a corner or in a closet.
- Avoid obstacles and high-powered appliances.
- Keep your router in a central location at a certain height.
- Keep the antennas vertical when the router is placed on a desktop.
- Keep the antennas upright when the router is hanging on a wall.

Quick Installation Guide



AX3000 Gigabit Wi-Fi 6 Router

