

New model information

DVD-2500BTCI

Blu-ray Disc Transport

DENON

**New-generation HD Bitstream Output Support.
New Blu-ray Disc Transport.**



Bullet points

Advanced Features

- BD Transport for faithful transmission of Full HD video and HD audio signal
- 1080/24p output, to bring out the full quality of film
- HDMI output for HD video and audio signal transmission (Ver.1.3a with Deep Color, High Bit-Rate Audio Output)
- High-grade I/P conversion and scaling up to 1080p.

Construction

- Separate blocks to suppress interference between circuits
- Precision Drive Mechanism, a Denon original

User Friendly

- Plays a wealth of media formats
- Supports DivX file playback (Ver. 6)
- Supported memory cards and playback files
- Supports extended functions for BD-Video^(*)
- Includes easy-to-use remote control unit

Advanced Features

• BD Transport for faithful transmission of Full HD video and HD audio signals

The DVD-2500BTCI is a Blu-ray disc transport that outputs video and digital audio signals⁽¹⁾ via an HDMI port. When connected to a Denon A/V surround amp such as the recently-released AVR-4308CI equipped with an HD-format decoder, the DVD-2500BTCI's transport features can be used on their own to enjoy high-quality video and audio.

⁽¹⁾ Dolby TrueHD bitstream, Dolby Digital Plus bitstream, Dolby Digital bitstream, DTS-HD bitstream, DTS bitstream, LPCM (2-ch)

• 1080/24p output, to bring out the full quality of film

The DVD-2500BTCI includes 1080/24p HDMI output to faithfully reproduce video images recorded on the Blu-ray disc. When connected to a 1080/24p display, movie buffs can enjoy the remarkable video performance of Blu-ray that brings out the full character of film material.

• HDMI output for HD video and audio signal transmission (Ver.1.3a with Deep Color, High Bit-Rate Audio Output)

• High-grade I/P conversion and scaling up to 1080p.

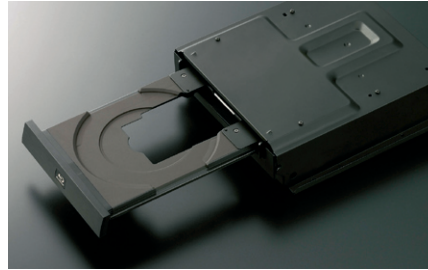
Construction

• Separate blocks to suppress interference between circuits

The video and power circuits have been separated into two independent blocks within the chassis, and to thoroughly eliminate signal degradation caused by interference between circuits, each circuit has been mounted on its own board. In addition, the top cover features a two-layered construction and the chassis bottom is constructed of three layers to protect the circuits from vibration.

• Precision Drive Mechanism, a Denon original

The DVD-2500BTCI features a unique drive mechanism that Denon newly developed for use with Blu-ray discs. To further protect the internal disc space from magnetic influences, dust, and external noise, Denon improved its mechanism unit from previous DVD players by adding a shield to the bottom and top of the unit to create an ideal playback environment inside. In addition, Denon incorporated its critically-acclaimed Suppress Vibration Hybrid (S.V.H.) loader constructed with a combination of different materials to ensure stable disc rotation and greater accuracy in reading the disc.



User Friendly

• Plays a wealth of media formats

BD-ROM (BD Video), DVD-Video, DVD+R/RW*, DVD-R, DVD-RW (VR mode supported), CD, CD-R/RW, and PC formats such as MP3, WMA, and JPEG written onto CD-R/RW discs. ***Conditional.**

Note: Some discs may not be playable if content has been poorly written.

• Supports DivX file playback (Ver. 6)

Files recorded in the DivX moving picture compression format on DVD-R/RW, CD-R/RW or other media can be played.

• Supported memory cards and playback files

Plays MP3, WMA, and JPEG files on SD, SDHC, miniSD⁽²⁾, and microSD⁽²⁾ cards.

⁽²⁾: A dedicated adaptor (sold separately) is required for miniSD and microSD cards.

• Supports extended functions for BD-Video⁽³⁾

Sub-video data (director's comments, etc.) recorded with movies on BD-Video discs can be enjoyed in a sub-screen along with the main screen.

⁽³⁾: As of October 2007, there were no BD-Video discs that supported extended functions.

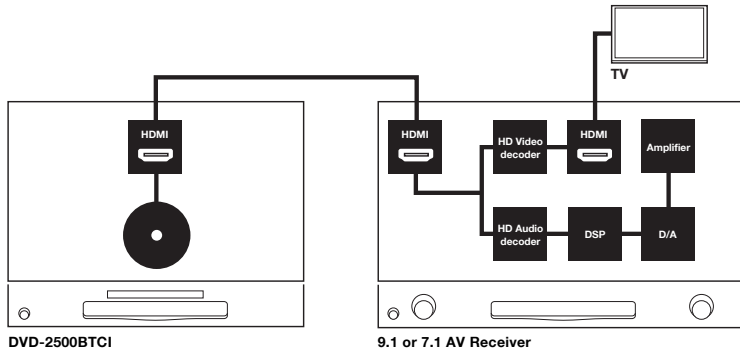
• Includes easy-to-use remote control unit

Ports

Video & Audio		
HDMI output	x 1	
Control		
RS-232C	x 1	
Remote control	IN x 1, OUT x 1	

Main Specifications

Signal system	NTSC
Power supply	120V, 60 Hz
Power consumption	30W (Standby: 0.8W)
Dimensions W x H x D (incl. protrusions)	17-2/16" x 5-8/16" x 15-7/16"
	434 x 139 x 391 mm
Weight	20.3 lbs 9.2 kg



Design and specifications are subject to change without notice. Dolby® and the double-D device are registered trademarks of Dolby Laboratories Licensing Corporation. DTS and DTS Digital Surround are registered trademarks of DTS technology. HDMI, the HDMI logo and High-Definition Multimedia Interface are trademarks or registered trademarks of HDMI Licensing LLC. iVX, DivX Certified, and associated logos are trademarks of DivX, Inc. and are used under license. Blu-ray Disc® and Blu-ray Disc logo are trademarks. Java and all other trademarks and logos are trademarks or registered trademarks of Sun Microsystems, Inc. in the United States and/or other countries. Windows Media and the Windows logo are trademarks or registered trademarks of Microsoft Corporation in the United States and/or other countries. KODAK® is trademark of Eastman Kodak Company.