

# Owner's Manual

Downdraft Vent  
System

ZVB30  
ZVB36



**Monogram®**  
*We bring good things to life.*

*Introduction*

Your new Monogram downdraft vent system makes an eloquent statement of style, convenience and kitchen planning flexibility. Whether you chose it for its purity of design, assiduous attention to detail—or for both of these reasons—you’ll find that your Monogram downdraft vent system’s superior blend of form and function will delight you for years to come.

Your Monogram downdraft vent system was designed to provide the flexibility to blend in with your kitchen cabinetry. Its sleek design can be beautifully integrated into the kitchen.

The information on the following pages will help you operate and maintain your downdraft vent system properly.

*Contents*

<b>Care and Cleaning</b>	<b>Downdraft Vent System</b>
Grease Filters . . . . . 9	Canning . . . . . 8
Painted or Stainless Steel Surfaces . . . . . 9	Cooking Tips . . . . . 8
<b>Consumer Services</b>	Raising or Lowering the Vent System . . . . . 8
Before You Call For Service . . . . . 9	Selector Switch . . . . . 8
Important Phone Numbers . . . . . 10	
Model and Serial Numbers . . . . . 2	
Safety Instructions . . . . . 4-7	
Warranty . . . . . 11, 12	

*Before using your downdraft vent system*

Read this guide carefully. It is intended to help you operate and maintain your new downdraft vent system properly.

Keep it handy for answers to your questions.

**PLEASE NOTE:** The downdraft vent system you have purchased was designed to be used with Monogram cooktops listed in the installation instructions.

If you don’t understand something or need more help, there is a list of toll-free consumer service numbers included in the back section of this manual.

**OR**

Visit our Website at: [www.monogram.com](http://www.monogram.com)

*Write down the model & serial numbers*

These numbers are on the Consumer Product Ownership Registration Card packed separately with your downdraft vent system.

**Before sending in this card, please write these numbers here:**

\_\_\_\_\_

Model Number

\_\_\_\_\_

Serial Number

Use these numbers in any correspondence or service calls concerning your downdraft vent system.



---

*If you  
received a  
damaged  
downdraft  
vent system*

Immediately contact the dealer (or builder) that sold you the downdraft vent system.

---

*Save time  
& money*

Before you request service, check the Before You Call For Service section in the back of this guide.

It lists causes of minor operating problems that you can correct yourself.

---

*If you need  
service*

To obtain service, see the Consumer Services page in the back of this guide.

We're proud of our service and want you to be pleased. If for some reason you are not happy with the service you receive, here are two steps to follow for further help.

***For customers in the USA:***

FIRST, contact the people who serviced your appliance. Explain why you are not pleased. In most cases, this will solve the problem.

NEXT, if you are still not pleased, write all the details—including your phone number—to:

Manager, Customer Relations  
GE Appliances  
Appliance Park  
Louisville, KY 40225

***For customers in Canada:***

FIRST, contact the people who serviced your appliance. Explain why you are not pleased. In most cases, this will solve the problem.

NEXT, if you are still not pleased, write all the details—including your phone number—to:

Manager, Consumer Relations  
Camco Inc.  
1 Factory Lane, Suite 310  
Moncton, N.B. E1C 9M3

# IMPORTANT SAFETY INSTRUCTIONS

## **⚠ WARNING!**

For your safety, the information in this guide must be followed to minimize the risk of fire or explosion, electric shock, or to prevent property damage, personal injury, or loss of life.

---

## **⚠ WARNING!—TO REDUCE THE RISK OF FIRE, ELECTRIC SHOCK, OR INJURY TO PERSONS, OBSERVE THE FOLLOWING:**

- A** Use this unit only in the manner intended by the manufacturer. If you have any questions, contact the manufacturer.
  - B** Before servicing or cleaning unit, switch power off at service panel and lock the service disconnecting means to prevent power from being switched on accidentally. When the service disconnecting means cannot be locked, securely fasten a prominent warning device, such as a tag, to the service panel.
- CAUTION:** For general ventilating use only. Do not use to exhaust hazardous or explosive materials and vapors.
- Installation work and electrical wiring must be done by qualified person(s) in accordance with all applicable codes and standards, including fire-rated construction.
  - When cutting or drilling into wall or ceiling, do not damage electrical wiring and other hidden utilities.
  - Ducted fans must always be vented to the outdoors.
  - Sufficient air is needed for proper combustion and exhausting of gases through the flue (chimney) of fuel-burning equipment to prevent backdrafting. Follow the heating equipment manufacturer's guideline and safety standards such as those published by the National Fire Protection Association (NFPA), and the American Society for Heating, Refrigeration and Air Conditioning Engineers (ASHRAE), and the local code authorities.
  - To reduce the risk of fire, use only metal ductwork.
  - PVC sewer pipe can be used as duct under concrete slab if allowed by local code board.
  - This unit must be grounded.
- 

## **SAFETY PRECAUTIONS—WARNING TO REDUCE THE RISK OF A RANGE TOP GREASE FIRE:**

- A** Never leave surface units unattended at high settings. Boilovers cause smoking and greasy spillovers that may ignite. Heat oils slowly on low or medium settings.
- B** Always turn hood **ON** when cooking at high heat or when cooking flaming foods.
- C** Clean ventilating fans frequently. Grease should not be allowed to accumulate on fan or filter.
- D** Use proper pan size. Always use cookware appropriate for the size of the surface element.

# INSTRUCTIONS IMPORTANTES DE SÉCURITÉ

## **⚠ AVERTISSEMENT!**

Pour votre sécurité, vous devez suivre les instructions de ce guide, afin de minimiser tout risque d'incendie ou d'explosion, de secousse électrique ou d'empêcher tout dommage matériel, blessure corporelle ou perte de vie humaine.

---

## **⚠ AVERTISSEMENT ! POUR RÉDUIRE TOUT RISQUE D'INCENDIE, DE SECOUSSE ÉLECTRIQUE OU DE BLESSURE CORPORELLE, SUIVEZ LES INSTRUCTIONS SUIVANTES :**

- A** N'utilisez cet appareil que de la manière prévue par le fabricant. Si vous avez des questions, contactez le fabricant.
  - B** Avant de réparer ou de nettoyer votre appareil, débranchez le courant au niveau du panneau de distribution d'électricité et verrouillez le mécanisme de débranchement du panneau pour empêcher tout branchement accidentel du courant. Si vous ne pouvez pas verrouiller le mécanisme de débranchement, attachez solidement un avertissement visible, comme une étiquette, au panneau de distribution.
- ATTENTION :** Cet appareil ne doit être utilisé qu'à des fins de ventilation générale. Ne l'utilisez jamais pour ventiler des vapeurs ou des matériaux explosifs ou dangereux.
- Tous travaux d'installation ou de câblage doivent être effectués par une personne qualifiée conformément à tous les codes et toutes les normes en vigueur, y compris ceux de construction résistant au feu.
  - Quand vous coupez un mur ou un plafond, ou quand vous faites un trou dans un mur ou un plafond, veillez à ne pas endommager le câblage électrique et les autres services publics cachés.
  - Les ventilateurs canalisés doivent toujours avoir leur ouverture vers l'extérieur.
  - Vous devez prévoir une aération suffisante pour bien calciner et éliminer les gaz par la cheminée de l'appareil à combustion, pour empêcher tout retour de flamme. Suivez les directives de l'appareil de chauffage et des normes de sécurité telles que celles publiées par la National Fire Protection Association (NFPA) et l'American Society for Heating, Refrigeration and Air Conditioning Engineers (ASHRAE), ainsi que les instructions des autorités qui émettent le code local.
  - Pour réduire le risque d'incendie, n'utilisez que des canalisations métalliques.
  - Vous pouvez utiliser comme canalisation un tuyau d'égout en CPV sous une dalle en béton, si l'autorité qui émet le code local le permet.
  - Vous devez mettre à la terre cet appareil.
- 

## **PRÉCAUTIONS DE SÉCURITÉ—AVERTISSEMENT POUR RÉDUIRE TOUT RISQUE D'INCENDIE DE GRAS SUR LE FOUR**

- A** Ne laissez jamais les unités chauffantes de surface sans surveillance à une température élevée. Les substances bouillantes peuvent déborder en fumant et en dégageant des graisses qui peuvent prendre feu. Réchauffez les huiles lentement à des températures basses ou moyennes.
- B** Mettez toujours en marche la hotte quand vous cuisinez à haute température ou quand vous cuisinez des aliments flambés.
- C** Nettoyez souvent les ventilateurs d'aération. Vous ne devez permettre aucune accumulation de graisse sur le ventilateur ou sur le filtre.
- D** Utilisez des ustensiles de cuisine de bonne taille. Utilisez toujours des ustensiles de cuisine qui correspondent à l'élément chauffant de surface.

# IMPORTANT SAFETY INSTRUCTIONS

## *SAFETY PRECAUTIONS—WARNING—TO REDUCE THE RISK OF INJURY TO PERSONS IN THE EVENT OF A RANGE TOP GREASE FIRE, OBSERVE THE FOLLOWING:\**

- A** **SMOTHER FLAMES** with a close-fitting lid, cookie sheet, or metal tray, then turn off the burner. **BE CAREFUL TO PREVENT BURNS.** If the flames do not go out immediately, **EVACUATE AND CALL THE FIRE DEPARTMENT.**
- B** **NEVER PICK UP A FLAMING PAN—** You may be burned.
- C** **DO NOT USE WATER,** including wet dishcloths or towels—a violent steam explosion will result.
- D** **Use an extinguisher ONLY if:**
  - 1** You know you have a Class ABC extinguisher, and you already know how to operate it.
  - 2** The fire is small and contained in the area where it started.
  - 3** The fire department is being called.
  - 4** You can fight the fire with your back to an exit.

*\*Based on "Kitchen Firesafety Tips" published by NFPA.*

**CAUTION:** For general ventilating use only. Do not use to exhaust hazardous or explosive materials and vapors.

Make sure all fingers are away from the downdraft top when it is lowered.

---

## *SERVICING*

### **If You Need Service...**

Do not attempt to repair or replace any part of the downdraft system unless it is specifically recommended in this guide. All other servicing should be referred to a qualified technician.

Be sure electrical power is off before servicing the unit.

It may be necessary to remove the downdraft blower system in order to service components such as the blower motor or air vent mechanism.

Disconnect power to the cooktop and remove it first. Reverse the steps in the Install the Downdraft section to remove the blower.

Service parts are available from a GE Service and Parts Center.

## SAVE THESE INSTRUCTIONS

# INSTRUCTIONS IMPORTANTES DE SÉCURITÉ

*PRÉCAUTIONS—AVERTISSEMENT—POUR RÉDUIRE TOUT RISQUE DE BLESSURE CORPORELLE EN CAS D'INCENDIE DE GRAS À LA SURFACE DU FOUR, OBSERVEZ LES MESURES SUIVANTES. \**

**A** **ÉTOUFFEZ LES FLAMMES** à l'aide d'un couvercle hermétique, d'une tôle à biscuits ou d'un plateau de métal, puis éteignez l'élément chauffant. FAITES ATTENTION DE NE PAS VOUS BRÛLER. Si les flammes ne s'éteignent pas immédiatement, SORTEZ DE LA PIÈCE ET APPELEZ LES POMPIERS.

**B** **NE SOULEVEZ JAMAIS UNE CASSEROLE EN FLAMMES.** Vous risquez de vous brûler.

**C** **N'UTILISEZ JAMAIS D'EAU,** de serviette mouillée ou de torchon mouillé – cela occasionnera une explosion violente de vapeur.

**D** **N'utilisez un extincteur QU'AUX CONDITIONS SUIVANTES :**

**1** Vous savez que vous avez un extincteur de classe ABC, et vous savez l'utiliser.

**2** Le feu est faible et contenu dans l'endroit où il a commencé.

**3** Vous avez déjà appelé les pompiers.

**4** Vous devez vous ménager une voie de sortie dans le dos pour combattre le feu.

*\*Basé sur «Kitchen Firesafety Tips» publiés par la NFPA.*

**ATTENTION :** Cet appareil ne doit être utilisé qu'à des fins de ventilation générale. Ne l'utilisez jamais pour ventiler des vapeurs ou des matériaux explosifs ou dangereux.

Assurez-vous de ne pas mettre vos doigts sur le rabattant de ventilation quand vous l'abaissez.

---

## ENTRETIEN ET RÉPARATIONS

**Si vous avez besoin d'entretien ou de réparations...**

N'essayez jamais de réparer ou de remplacer des pièces du système de rabattant de ventilation à moins que ce guide ne vous le recommande spécifiquement. Vous devez avoir recours à un technicien qualifié pour tout autre entretien ou réparation.

Assurez-vous que le courant électrique soit coupé avant de réparer ou d'entretenir votre appareil.

Il peut être nécessaire d'enlever le système de soufflerie du rabattant de ventilation pour atteindre des pièces comme le moteur de la souffleuse ou le mécanisme d'aération.

Débranchez le courant de la surface de cuisson et enlevez-la d'abord. Inversez les étapes contenues dans la section «Installation du rabattant de ventilation» pour enlever la souffleuse.

Les pièces de remplacement sont disponibles à un Centre de service et de pièces GE.

## CONSERVEZ CES INSTRUCTIONS

## Using the Downdraft System

### *Downdraft Vent System*

#### *To use the downdraft system*

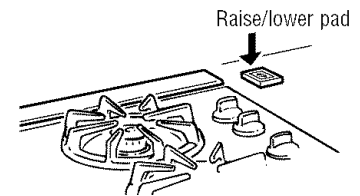
Turn the downdraft blower **ON** by pressing the raise/lower pad. Place your finger on the “center” of the pad and hold until you observe the vent moving, then release. The air vent will rise.

All models have a remote raise/lower pad.

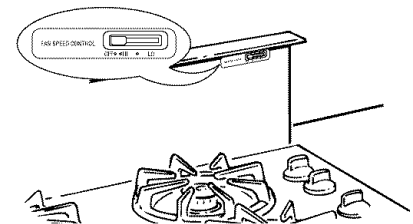
Use the selector switch to turn the blower **ON**, **OFF** or to change the blower speed.

The vent may be lowered by again pressing the raise/lower pad. The blower, if left on, will automatically go off when the vent is lowered.

**NOTE:** For most convenient operation, set the blower to the speed you use most often. The blower will come on to this speed whenever the unit is raised.



The raise/lower pad location may vary.



Use the selector switch to turn the blower on or off or to change the blower speed.

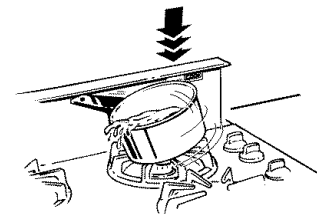
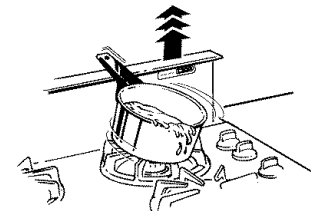
#### *When using the downdraft system...*

**⚠ CAUTION:** Be careful when raising or lowering the downdraft. Be sure pots, pot handles and other objects are clear of the downdraft and cannot be struck or tipped by the downdraft being raised.

**⚠ ATTENTION :** Faites attention quand vous soulevez ou abaissez le rabattant de ventilation. Assurez-vous que des casseroles, des manches de casseroles et d'autres objets ne gênent pas le rabattant et ne puissent pas être frappés ou renversés quand vous soulevez le rabattant.

**NOTE:** There is a slight trim overhang at each end of the vent.

- To avoid injury, be sure fingers are clear of the downdraft cover when it is being lowered.
- Keep hands and fingers away from all downdraft parts.



Be careful when raising or lowering the downdraft.

#### *Cooking tips*

The high air movement of this downdraft system can increase the cooking times for some foods. It may take longer to reach high cooking temperatures if the downdraft is turned to high right away. Adjust the fan speed for best cooking results.

For best results when heating oil for deep frying or when boiling water, use the front

surface units or wait until the water is boiling or the oil is at frying temperatures before turning on the downdraft.

The downdraft may not completely capture all the steam from pans on the front burners.

#### *Canning*

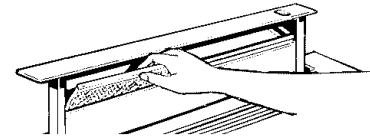
When canning foods in a water-bath canner, a gentle but steady boil must be maintained continuously for the required time.

When canning foods in a pressure canner, the pressure must be maintained continuously for the required time.

Use of the blower at **HI** speed when canning may reduce the temperature enough to stop boiling. While canning, we recommend using the downdraft at **LO** speed and using the front surface unit.

### *Grease filters*

The efficiency of your downdraft depends on a clean filter. Frequency of cleaning depends on the type of cooking you do. Grease filters should be cleaned at least once a month. Never operate the downdraft without the filters in place.



**To remove:** Pull the filters out by grasping them and pulling straight up.

**To clean:** Soak and then agitate in a hot detergent solution. Light brushing may be used to remove embedded soil. Rinse, shake and remove moisture before replacing.

With careful handling, the filter will last for years. If replacement becomes necessary, order the part from your dealer.

### *Painted or stainless steel surfaces*

**Do not use a steel-wool pad; it will scratch the surface.**

To clean the stainless steel surface, use warm sudsy water, a stainless steel cleaner such as Kleen King®, or an all-purpose liquid or spray cleaner. Always scrub in the direction of the grain. Rinse thoroughly with a sponge or cloth and clean water. Dry with a soft, clean cloth.

After cleaning, use a stainless steel polish, such as Stainless Steel Magic®, Revere Copper and Stainless Steel Cleaner®, or Wenol All Purpose Metal Polish®. Follow the product instructions for cleaning the stainless steel surface.

## Before You Call For Service...

*Save time and money!*

*Review the troubleshooting tips on this page first and you may not need to call for service.*

PROBLEM	POSSIBLE CAUSE
FAN DOES NOT WORK	<ul style="list-style-type: none"> <li>• The vent is not fully extended. Press the raise/lower pad.</li> <li>• The blower control switch may be in the <b>OFF</b> position. Slide it to the right.</li> </ul>
VENT DOES NOT WORK	<ul style="list-style-type: none"> <li>• The vent is not plugged into an outlet. Plug the vent into a 120V power outlet.</li> <li>• The raise/lower pad did not engage the lift motor. Hold down the pad for a couple of seconds to activate the motor.</li> <li>• The circuit breaker may have tripped. Check the circuit breaker—reset if necessary.</li> </ul>

---

*With the purchase of your new Monogram appliance, receive the assurance that if you ever need information or assistance from GE, we'll be there. All you have to do is call—toll-free!*

---

**GE Answer Center®**

*In the USA:  
800.626.2000*

Whatever your question about any Monogram major appliance, GE Answer Center® information service is available to help. Your call—and your question—will be answered promptly and courteously. And you can call any time. GE Answer Center® service is open 24 hours a day, 7 days a week.

**OR**

Visit our Website at: [www.monogram.com](http://www.monogram.com)

*In Canada, call 1.888.880.3030.*

---

**In-Home Repair Service**

*In the USA:  
800.444.1845*

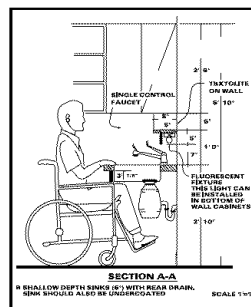
*In Canada:  
1.888.880.3030*

A GE consumer service professional will provide expert repair service, scheduled at a time that's convenient for you. Many GE Consumer Service company-operated locations offer you service today or tomorrow, or at your convenience (7:00 a.m. to 7:00 p.m. weekdays, 9:00 a.m. to 2:00 p.m. Saturdays). Our factory-trained technicians know your appliance inside and out—so most repairs can be handled in just one visit.

---

**For Customers With Special Needs...**

*In the USA:  
800.626.2000*



GE offers Braille controls for a variety of GE appliances, and a brochure to assist in planning a barrier-free kitchen for persons with limited mobility.

Consumers with impaired hearing or speech who have access to a TDD or a conventional teletypewriter may call 800.TDD.GEAC (800.833.4322) to request information or service.

---

**Service Contracts**

*In the USA:  
800.626.2224*

*In Canada:  
1.888.880.3030*

You can have the secure feeling that GE Consumer Service will still be there after your warranty expires. Purchase a GE contract while your warranty is still in effect and you'll receive a substantial discount. With a multiple-year contract, you're assured of future service at today's prices.

---

**Parts and Accessories**

*In the USA:  
800.626.2002*

*In Canada:  
1.888.880.3030*

Individuals qualified to service their own appliances can have parts or accessories sent directly to their home. The GE parts system provides access to over 47,000 parts...and all GE Genuine Renewal Parts are fully warranted. VISA, MasterCard and Discover cards are accepted.

User maintenance instructions contained in this guide cover procedures intended to be performed by any user. Other servicing generally should be referred to qualified service personnel. Caution must be exercised, since improper servicing may cause unsafe operation.

---

***YOUR MONOGRAM DOWNDRAFT SYSTEM WARRANTY***  
***Staple sales slip or cancelled check here. Proof of original purchase date is needed to obtain service under warranty.***

---

***WHAT IS COVERED***

*From the Date of the Original Purchase*

**FULL ONE-YEAR WARRANTY**

For one year from date of original purchase, we will provide, free of charge, parts and service labor in your home to repair or replace **any part of the downdraft system** that fails because of a manufacturing defect.  
.....

This warranty is extended to the original purchaser and any succeeding owner for products purchased for ordinary home use in the 48 mainland states, Hawaii and Washington, D.C. In Alaska the warranty is the same except that it is LIMITED because you must pay to ship the product to the service shop or for the service technician's travel costs to your home.

All warranty service will be provided by our Factory Service Centers or by our authorized Customer Care® servicers during normal working hours.

Should your appliance need service, during warranty period or beyond, call 800.444.1845.

---

***WHAT IS NOT COVERED***

- Service trips to your home to teach you how to use the product.
- Replacement of house fuses or resetting of circuit breakers.
- Failure of the product if it is used for other than its intended purpose or used commercially.
- Improper installation, delivery or maintenance.
- Replacement of the replaceable filters.
- Damage to the product caused by accident, fire, floods or acts of God.
- Incidental or consequential damage caused by possible defects with this appliance.
- Damage caused after delivery.

---

Some states do not allow the exclusion or limitation of incidental or consequential damages, so the above limitation or exclusion may not apply to you. This warranty gives you specific legal rights, and you may also have other rights which vary from state to state.

To know what your legal rights are in your state, consult your local or state consumer affairs office or your state's Attorney General.

**Warrantor: General Electric Company, Louisville, KY 40225**



# Warranty for customers in Canada

*Downdraft Vent System*

## ***YOUR MONOGRAM DOWNDRAFT SYSTEM WARRANTY*** ***Staple sales slip or cancelled check here. Proof of original purchase date is needed to obtain service under warranty.***

### ***WHAT IS COVERED***

*From the Date of the Original Purchase*

#### **FULL ONE-YEAR WARRANTY**

For one year from date of original purchase, we will provide, free of charge, parts and service labor in your home to repair or replace **any part of the downdraft system** that fails because of a manufacturing defect. This warranty is extended to the original purchaser and any succeeding owner for products purchased for ordinary home use in Canada.

.....  
All warranty service will be provided by our Factory Service Centers or by our authorized Customer Care<sup>®</sup> servicers during normal working hours.

Should your appliance need service, during warranty period or beyond, call 1.888.880.3030.

### ***WHAT IS NOT COVERED***

- Service trips to your home to teach you how to use the product.
- Replacement of house fuses or resetting of circuit breakers.
- Failure of the product if it is used for other than its intended purpose or used commercially.
- Improper installation, delivery or maintenance.
- Replacement of the replaceable filters.
- Damage to the product caused by accident, fire, floods or acts of God.
- Incidental or consequential damage caused by possible defects with this appliance.
- Damage caused after delivery.

Some provinces do not allow the exclusion or limitation of incidental or consequential damages, so the above limitation or exclusion may not apply to you. This warranty gives you specific legal rights, and you may also have other rights which vary from province to province. To know what your legal rights are in your province, consult your local or provincial consumer affairs office.

**Warrantor: Camco Inc. If further help is needed concerning this warranty, write: Manager, Consumer Relations, Camco Inc., 1 Factory Lane, Suite 310, Moncton, N.B. E1C 9M3.**



**Monogram<sup>®</sup>**  
*We bring good things to life.*

General Electric Company  
Louisville, KY 40225

959-0332-003
164D4290P340
49-80184

02-03 JR

Printed in the United States

ZVB30  
ZVB36

