




RSC901

1A SMART BATTERY CHARGER AND MAINTAINER

For all battery types, including lithium



 6V/12V
Voltage

 Clamps

 O-Ring connectors

 IP65
Weatherproof

 Car

 Motorcycle

INNOVATION ON THE MOVE

NOT FOR PRINT PRODUCTION!
本品不可印刷生产

WARNING:

This PDF file is for reference only and not to be used for the creation of production art.

Colour printouts and screen displays should not be used for colour approval as colours may vary from device to device. The colour values for this file are defined in either Pantone (PMS), HKS, or in process colours (CMYK).

For obtaining hard-copies in actual size (1:1) you need to enter the proper settings in your printer options.

警告:

本PDF文档仅作为参照文件，不能将本档用于印刷生产或者制作菲林。

本文档的彩色打印版本或其在电脑屏幕上显示的色彩，不可用于最终的色彩参照。因为硬件或设备的差异，可能造成色彩的偏差。最终正式的色彩请遵照由色板卡片PMS、HKS或者CMYK（青红黄黑）所定义的色彩。

若本档的打印件要获取1:1的原始尺寸，须在打印选项中作出相应的设置。

OSRAM

#90721

Cyan Magenta Yellow Black
score dimension 148 x 210 mm



WARNING:
This PDF file is for reference only and not to be used for the creation of production art.
Colour printouts and screen displays should not be used for colour approval as colours may vary from device to device. The colour values for this file are defined in either Pantone (PMS), HKS, or in process colours (CMYK).
For obtaining hard-copies in actual size (1:1) you need to enter the proper settings in your printer options.

警告:
本PDF文档仅作为参照文件，不能将本档用于印刷生产或者制作菲林。
本档的彩色打印版本或其电脑屏幕上显示的色彩，不可用于最终的色彩参照。因为硬件或设备的差异，可能造成色彩的偏差。最终正式的色彩请遵照由色卡片PMS、HKS或者CMYK（青红黄黑）所定义的色彩。
若本档的打印件要获取1:1的原始尺寸，须在打印选项中作出相应的设置。



RSC901
1A SMART
BATTERY CHARGER AND MAINTAINER

For all battery types, including lithium

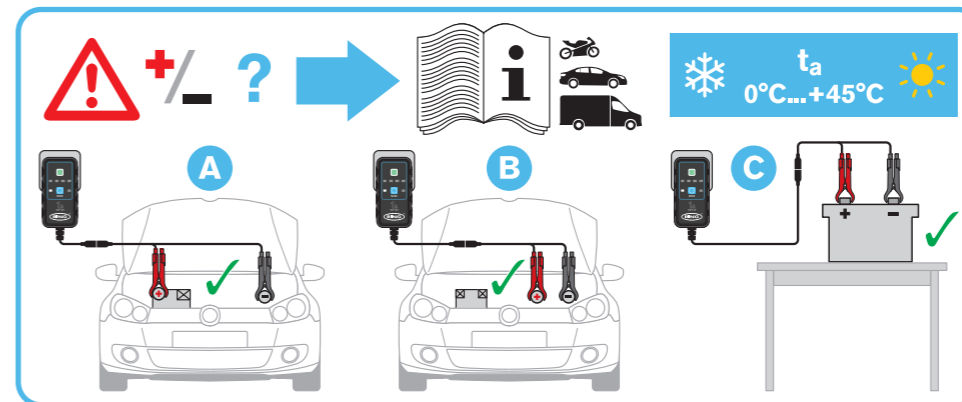
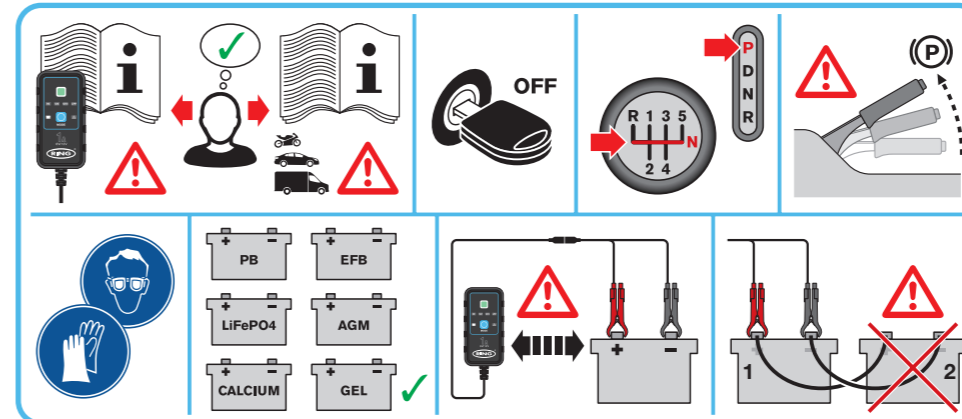
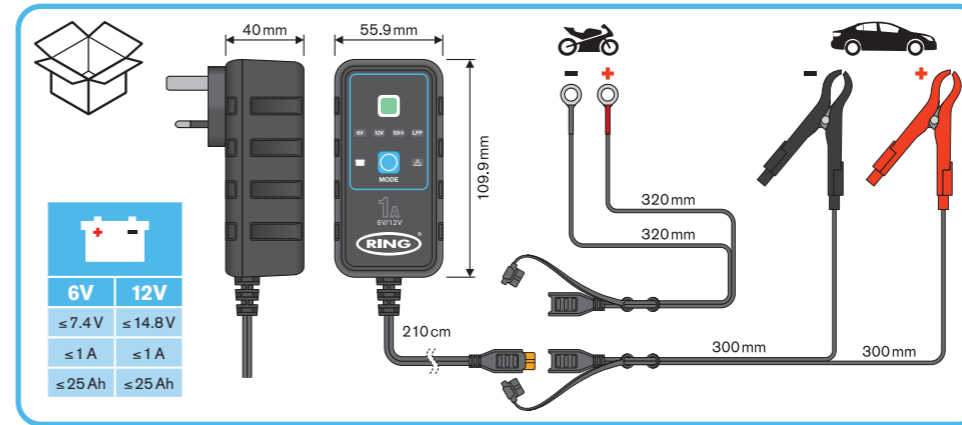
Warnings

DANGER! BE AWARE, LEAD-ACID BATTERIES GENERATE EXPLOSIVE GASES DURING NORMAL BATTERY OPERATION. FOR THIS REASON, IT IS VERY IMPORTANT TO READ AND FOLLOW THESE INSTRUCTIONS CAREFULLY, EACH TIME YOU USE THE CHARGING EQUIPMENT.

WARNING! Modern vehicles contain extensive electronic systems. You are required to check with the vehicle manufacturer, for any specific instructions regarding the use of this type of equipment on each vehicle.

- Charge in a well-ventilated area.
- DO NOT operate near flammable liquids or gases.
- DO NOT touch the clamps together or allow to touch the chassis.
- DO NOT connect the clamps via another metallic object.
- DO NOT cross connect power leads from charger to battery. Ensure positive (+/RED) is connected to positive and negative (-/BLACK) is connected to negative.
- DO NOT pull the cables or clamps from the battery terminals.
- DO NOT pull or carry the charger by the power cable.
- DO NOT pull the plug from the socket by the cable.
- DO NOT use worn or damaged cables, plugs or clamps. Any faulty item should be immediately repaired or replaced by a qualified technician.
- DO NOT use the charger for a task for which it is not designed.
- DO NOT cover or obstruct the charger ventilation louvres or fan.
- DO NOT at the same time charge batteries of different capacities or discharge levels.

For list of General Power Tool Safety Warnings please scan the QR code or visit:
www.ringautomotive.com/en/product-safety-documents

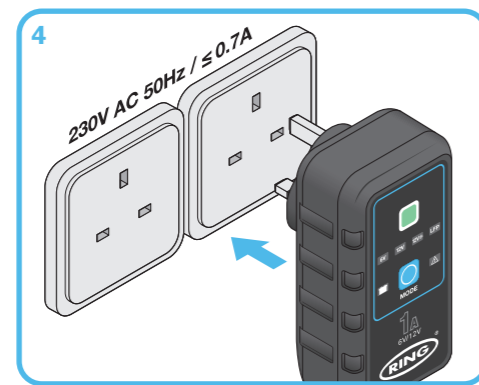
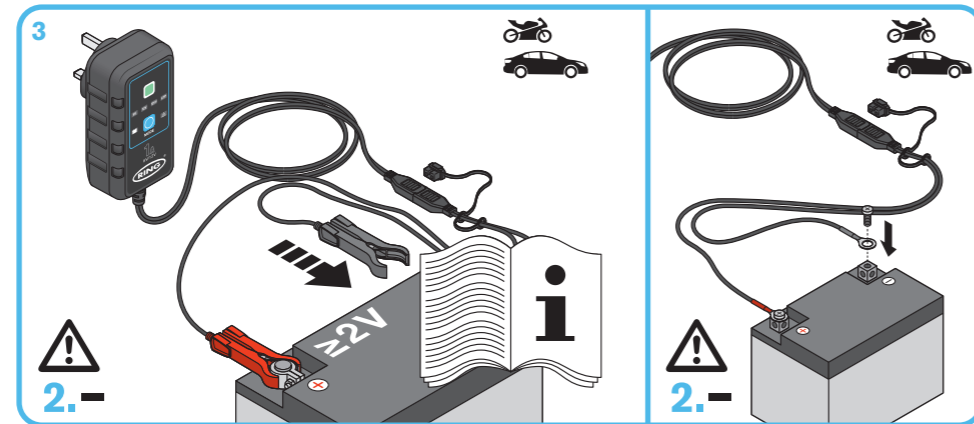
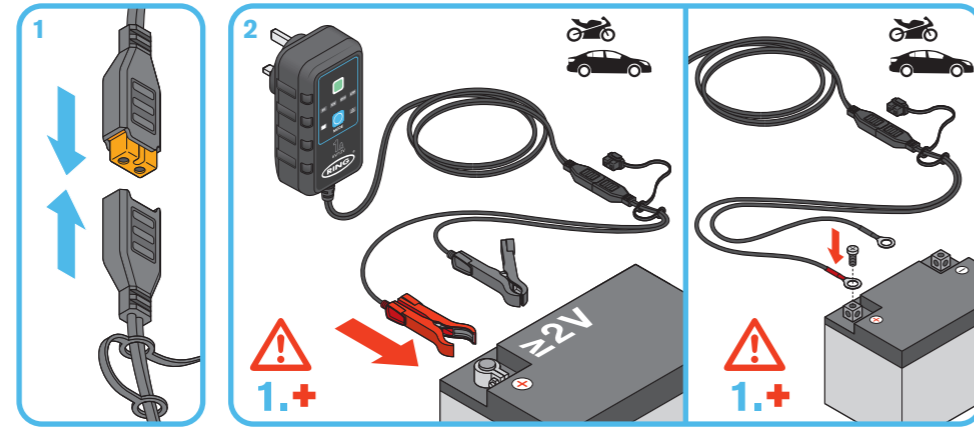


WARNING:
This PDF file is for reference only and not to be used for the creation of production art.
Colour printouts and screen displays should not be used for colour approval as colours may vary from device to device. The colour values for this file are defined in either Pantone (PMS), HKS, or in process colours (CMYK).
For obtaining hard-copies in actual size (1:1) you need to enter the proper settings in your printer options.

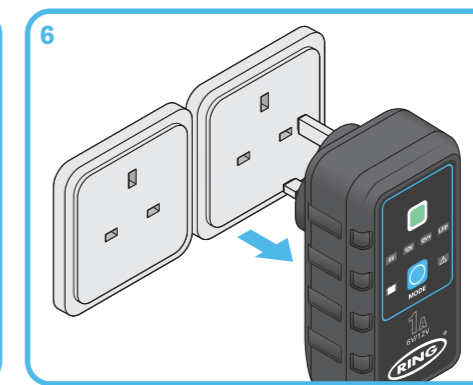
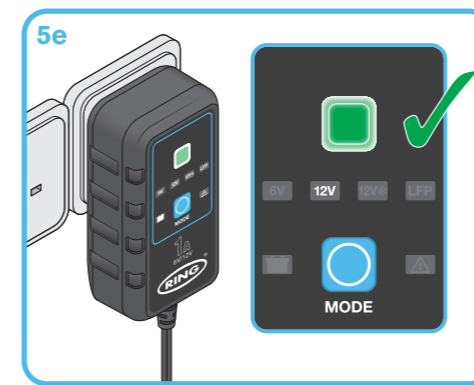
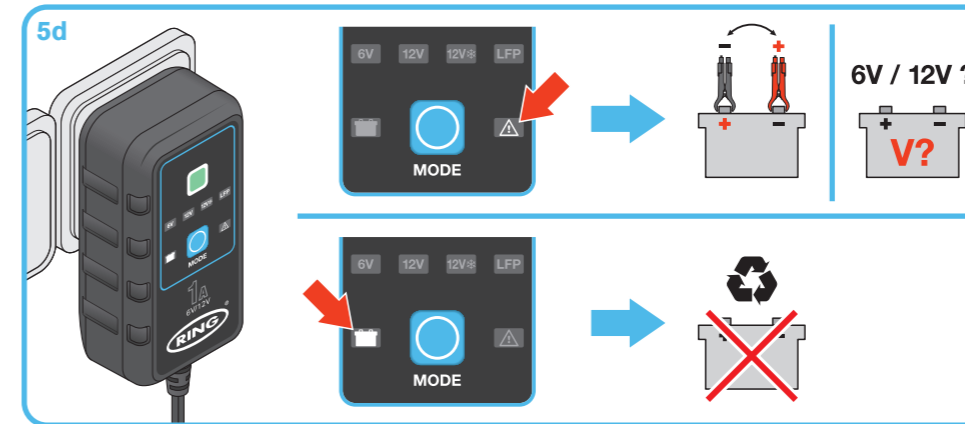
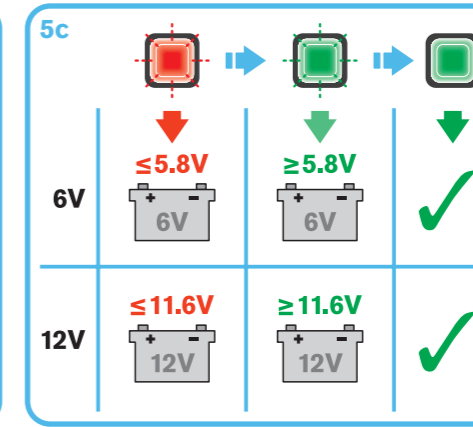
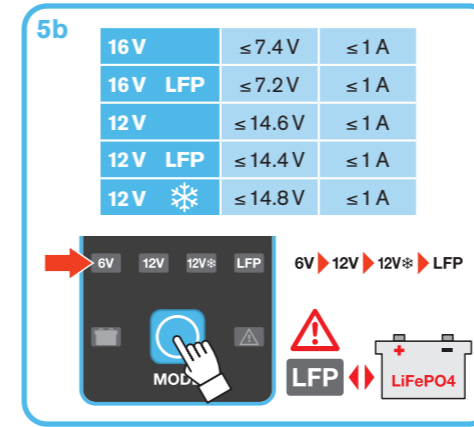
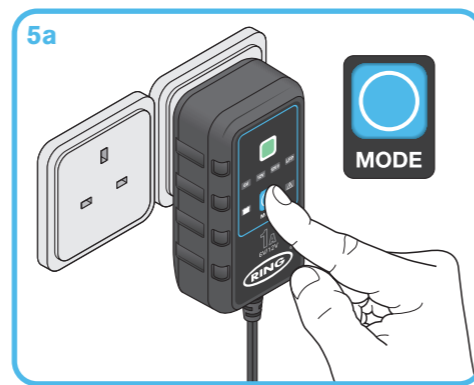
警告:
本PDF文档仅供参考，不能将本档用于印刷生产或者制作菲林。
本文档的彩色打印版本或其电脑屏幕上显示的色彩，不可用于最终的色彩参照。因为硬件或设备的差异，可能造成色彩的偏差。最终正式的色彩请遵照由色板卡片PMS、HKS或者CMYK（青红黄黑）所定义的色彩。
若本档的打印件要获取1:1的原始尺寸，须在打印选项中作出相应的设置。



RSC901
1A SMART
BATTERY CHARGER AND MAINTAINER
For all battery types, including lithium



4



5



WARNING:
This PDF file is for reference only and not to be used for the creation of production art.
Colour printouts and screen displays should not be used for colour approval as colours may vary from device to device. The colour values for this file are defined in either Pantone (PMS), HKS, or in process colours (CMYK).

For obtaining hard-copies in actual size (1:1) you need to enter the proper settings in your printer options.

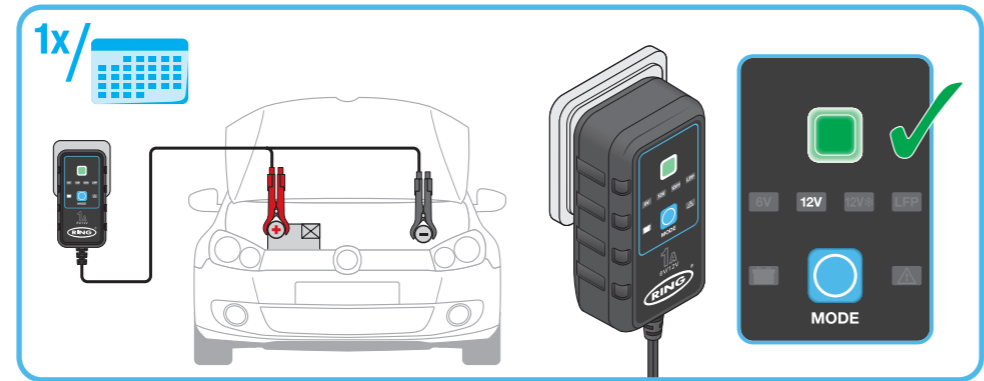
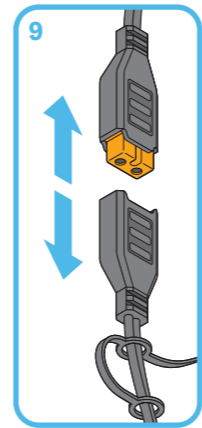
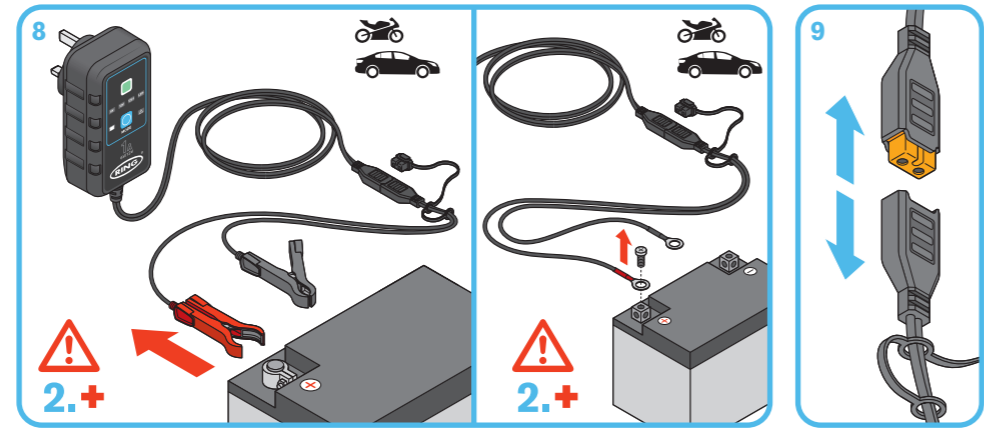
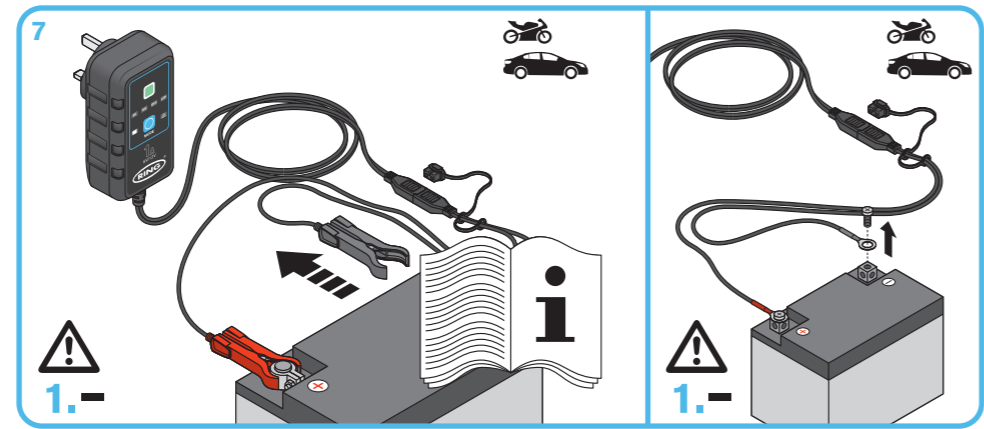
警告:
本PDF文档仅作为参照文件, 不能将本档用于印刷生产或者制作菲林。

本文档的彩色打印版本或其电脑屏幕上显示的色彩, 不可用于最终的色彩参照。因为硬件或设备的差异, 可能造成色彩的偏差。最终正式的色彩请遵照由色板卡片PMS,HKS或者CMYK(青红黄黑)所定义的色彩。

若本档的打印件要获取1:1的原始尺寸, 须在打印选项中作出相应的设置。



RSC901
1A SMART
BATTERY CHARGER AND MAINTAINER
For all battery types, including lithium



6

7



WARNING:

This PDF file is for reference only and not to be used for the creation of production art.

Colour printouts and screen displays should not be used for colour approval as colours may vary from device to device. The colour values for this file are defined in either Pantone (PMS), HKS, or in process colours (CMYK).

For obtaining hard-copies in actual size (1:1) you need to enter the proper settings in your printer options.

警告:

本PDF文档仅作为参照文件，不能将本文档用于印刷生产或者制作菲林。

本文档的彩色打印版本或其电脑屏幕上显示的色彩，不可用于最终的色彩参照。因为硬件或设备的差异，可能造成色彩的偏差。最终正式的色彩请遵照由色板卡片PMS,HKS或者CMYK（青红黄黑）所定义的色彩。

若本文档的打印件要获取1:1的原始尺寸，须在打印选项中作出相应的设置。

OSRAM

RSC901

1A SMART

BATTERY CHARGER AND MAINTAINER

For all battery types, including lithium



Do not use in extreme heat



Do not use in extreme cold



No drinks/liquids



No smoking/vaping



Keep away from children



Do not drop



Do not expose to moisture



Do not charge a frozen battery



Do not touch clamps together



Keep away from tools and jewellery



Do not damage cables



Do not use with damaged cable



Keep cables away from moving parts



Do not carry by cables



Risk of fire



Risk of electric shock



Risk of hazardous materials



Use in a well ventilated area



Battery may emit fumes



Surrounding items may emit fumes

This appliance is not intended for use by persons (including children) with reduced physical, sensory or mental capabilities, or lack of experience and knowledge, unless they have been given supervision or instruction concerning use of the appliance by a person responsible for their safety. Children should be supervised to ensure that they do not play with the appliance. For indoor use only. Charging only rechargeable Batteries. Disconnect the supply before making or breaking the connections to the battery. WARNING: Explosive gases. Prevent flames and sparks. Provide adequate ventilation during charging, the battery must be placed in a well ventilated area. WARNING: Use of unauthorized parts or failure to follow maintenance Instructions may create a risk of electric shock or injury. File instructions for future reference. Store the manual in a safe place.



Refer to instructions



UK Conformity mark



EU Conformity mark



WEEE (Waste Electrical and Electronic Equipment Directive)



Not for use by children



Do not open



Do not cover

Imported by
OSRAM GmbH
Nonnendammallee 44
13629 Berlin
Germany
www.osram.com



C10449058
G15126819
08.12.23

Manufactured by
Ring Automotive Limited
Volvox House, Gelder Road,
LEEDS, LS12 6NA,
UNITED KINGDOM
Telephone +44 (0)113 213 2000
Fax +44 (0)113 231 0266
Email autosales@ringautomotive.com
www.ringautomotive.com

#90721

Cyan Magenta Yellow Black
score dimension 148 x 210 mm