

SENCOR®

Let's live!



MOBILE PHONE

Element P5503

USER'S MANUAL

EN



Contents

1.	Safety instructions.....	2
2.	Getting started.....	6
2.1.	Inserting SIM and memory cards.....	6
2.2.	Buttons and connectors.....	7
2.3.	Switching the phone on.....	8
2.4.	Setting up your phone for the first time.....	8
2.5.	Switching the phone off.....	9
2.6.	Charging the battery.....	9
2.7.	Home screen.....	10
2.8.	Touch screen controls.....	12
3.	Basic features.....	14
3.1.	Entering text.....	14
3.2.	Calling.....	15
3.3.	Contacts.....	16
3.4.	Messages.....	17
3.5.	Data connection.....	18
3.6.	Browser.....	18
3.7.	Camera.....	19
3.8.	Computer connection.....	20
3.9.	Alarm, stopwatch, timer.....	21
4.	Phone Settings.....	22
4.1.	Wireless connections and networks.....	22
4.2.	Devices.....	23
4.3.	Personal.....	23
4.4.	SIM card security.....	24
4.5.	Accounts.....	25
4.6.	System.....	26
5.	Technical specifications.....	27

1. Safety instructions

**WARNING:**

Pay attention to the following instructions. The manufacturer does not assume any responsibility towards a user that does not follow these recommendations or uses the smartphone in an unsuitable manner. By using the device unsuitably, the user risks violating the relevant acts.

Read this user's manual carefully before use. Keep the manual for future reference.

- Always follow the basic safety instructions when using this device to prevent the risk of fire, electric shock or injury.
- Please read this manual and follow all instructions for use, maintenance and installation. Do not use the mobile phone for purposes other than the intended use.
- Failure to observe the rules specified in the user's manual or inappropriate use results in losing the warranty and can lead to injury or damage to property. The manufacturer is not liable for any damages in such cases.
- Using a mobile phone is prohibited in some areas. If you find yourself in an area where the use of mobile phones is prohibited, follow the instructions contained in this manual to switch the phone off. The usual areas where the use of mobile phones is prohibited include: Planes, Petrol stations with flammable fuels, locations where demolition work is being executed, etc. Operating smartphones can influence electronic devices and medical devices, such as pacemakers, hearing aids and other electronic medical devices.
- Switch off the phone when you find yourself near fuels, chemical substances or explosives. Keep the device away from children.
- Follow local rules regarding the use of mobile phones while driving. As the driver, you are primarily responsible for the given vehicle. Use the hands-free function of your smartphone, if available. Stop your vehicle in bad driving conditions before making or taking a call.
- If your phone supports "Aeroplane mode", enable "Aeroplane mode" prior to boarding a plane. If your phone does not support this mode, switch the device off prior to boarding a plane, as your device can interfere with plane instruments. Please follow the plane cabin instructions.
- Always use genuine accessories. Using a non-genuine battery or charger can result in losing the warranty, causing damage to the phone and injury.
- Modifying or changing the features of the phone or tampering with the device is prohibited. Modifying the device can result in serious failures and damage to property, or even injure the user. Unless approved by the manufacturer, updating the operating software is also considered a modification.
- Do not connect the battery charger to your smartphone before the battery is installed. Do not short circuit the battery.

- Charge the smartphone battery in well-ventilated and cooled areas and far from flammable and explosive materials.
- To prevent demagnetization, keep your smartphone away from magnetic materials, such as hard drives, credit cards etc.
- Mobile phones are sensitive to external interference, which can seriously affect functionality, in some environments, mobile phones cannot be used at all.
- Neither the mobile phone or charger are toys, smaller parts can be swallowed by children. The charger and connecting the charger into the electrical outlet is very risky for small children. The charger shall not be used by children.
- Do not unplug the charger by pulling on the power cord – risk of damaging the power cord/socket or charger. Unplug the power cord by pulling on the charger unit.
- Be very careful when the display glass on the phone breaks, sharp glass parts may cause injury. Do not use a damaged phone and seek professional help to repair the device.
- High volume set on the mobile phone can result in damage to your hearing, be careful when adjusting the volume. Using your phone to listen to loud music can have serious consequences. Be careful when adjusting the volume to listen to music.
- Do not use liquid or aerosol cleaning agents, benzene, solvents or similar products. Use a lightly dampened towel for cleaning.
- Do not use the device near water, e.g. in the tub, shower or pool. Immersing the device into water can lead to injury by electric shock. Do not place any containers with water on the device, for example, vases.
- Place the device on stable surfaces. The device may become damaged if it falls on the ground.
- Do not cover the air vents on the device. These are used to prevent overheating.
- Keep the device in areas not prone to someone stepping on it.
- Do not place any objects into the air vents. Risk of fire or electric shock. Do not allow the device to be sprayed with liquid.
- To reduce the risk of electric shock, do not dismantle the device. If your device requires service or repair, take the device to an authorized service centre or qualified technician. Opening the device or removing the cover can uncover areas with dangerous voltage or other risks. Risk of electric shock when using a device that is not properly reassembled.
- Do not expose the device to extreme temperatures, e.g. near a hot radiator or stove or in a heated car.
- Do not place the device on burning objects, such as candles or cigarettes.
- Do not use the device to report gas leaks near the source of the leak.
- This smartphone is capable of capturing photos, recording video and sound; respect the relevant laws and regulations for using these features. Under certain circumstances, capturing photos, video and sound recordings without permission can be considered as breaking the law and valid regulations.



- When using network features, please do not download files infected with a virus, do not install damaged photos and ringtones. Our company is not liable for defects caused by the phone behaving abnormally after downloading files.
- Follow local regulations for disposing of the battery. Recycle if possible. Do not throw the battery into standard waste.

**WARNING**

To prevent risk of fire or electric shock, do not expose the device to rain or moisture.

DECLARATION: Our company reserves the right to review the contents of this manual without prior notice.

Notes

Some device properties and accessories described in this user's manual depends on the software installed and the capacity and configuration of the local network, and does not necessarily have to be available or can be limited by mobile carriers. Thus, the descriptions provided do not necessarily correspond precisely to the specific phone or accessories, which you purchased. The manufacturer is not responsible for the quality and legality of any contents, which you upload or download to the mobile phone, whether it concerns text, pictures, music, films, additionally installed software protected by copyright etc. You are liable for consequences following the installation or using the contents of the above stated on this mobile phone.

All screenshots, symbols and icons in the user's manual are simulated. Actual screenshots, symbols and icons may differ.

Step-by-step procedures can differ from those provided in this manual, depending on the firmware version on the phone.

Unless stated otherwise, the home screen is the presumed starting point for all procedures described.

The phone is a device, the behaviour of which can be altered by the user via additional apps. Procedures and individual steps can therefore differ from those contained in this manual.

Note on the service provider: The phone is configured from the factory to fully utilize available services. Your provider can limit or change some functions, security measures or behaviour of the phone, as opposed to the description in this manual. Ask your provider for any changes.

SENCOR[®]

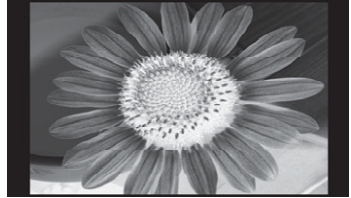
Appendix to the user's manual for the LCD panel

Measures for static image; red/blue/green/black spots on the screen

A static image can damage the LCD display permanently.

- Do not leave a static image on the LCD panel for more than 2 hours. This may result in a damaged panel. This damage is known as "screen burn-in".

The warranty does not apply to screen damage caused by the reasons stated above!



Red, blue, green, and black dots may appear on the screen

- This is typical for liquid crystal displays and does not indicate any problems. LCD screens are made using precision technology to provide even the finest image details. Several defective pixels can appear on the screen from time to time, indicated as red, blue, green or black dots (up to 0.001% of the total pixel count of the screen). This does not affect the properties and performance of your device.

2. Getting started

2.1. Inserting SIM and memory cards

To open the back cover, lift it with your fingernail or a blunt object at the lower edge at the location of the cut. Gradually release the cover around the entire perimeter of the phone.

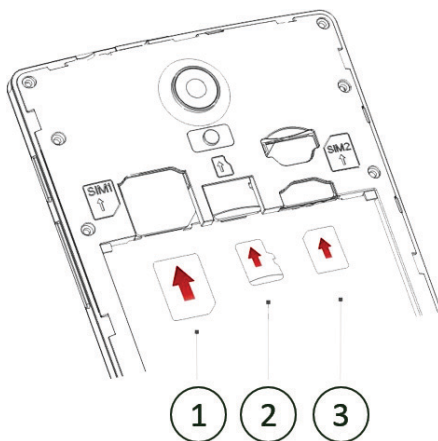
Lift the battery with a fingernail or a blunt object at the bottom edge in the place of the cut.

**WARNING:**

Prior to handling cards (SIM and memory) unplug the charger, switch the phone off and remove the battery.

Insert the **SIM card** in the appropriate slot with contacts downwards so that the contacts of the SIM card touch the built-in contacts for SIM in the phone. Insert SIM 1 card (no. 1 on the picture lower) in the left slot with the slanted corner down, insert micro SIM 2 card (no. 3) in the right slot with the slanted corner up.

Insert the **memory card** (no. 2 in the picture) in the middle slot between the SIM cards with contacts downwards, so that the contacts of the memory card touch the integrated contacts for the memory card in the phone.



When you **insert battery** in the phone, first connect the battery contacts with the contacts in the phone (in upper left part) and then gently press the battery into the battery compartment. When placing the back cover on the phone, place the cover on the top edge of the phone and gently push on the edge of the cover from the top edge down throughout the entire perimeter of the cover, until the cover is fully in place.

**NOTICE:**

Phone functions such as voice calls and video calls, receiving and sending text and multimedia messages and data transfers at different speeds are possible and available only when at least one of the SIM cards with activated operator functions is inserted and within reach of its wireless network. Ask your carrier about services available on your SIM card and network availability.

2.2. Buttons and connectors

The **charging connector** (no. 2 in the image below) is located at the top of the phone and is used to connect the USB charging cable. Connecting your phone to the computer allows you to take advantage of additional functions that are available (see PC connection for more information).

The **headphone connector** (no. 3) is located at the top of the phone.

On the front of the phone is located **videocamera** (no. 1), which can be activated as a camera or to make a call.

The button **Power** (no. 4) is used to turn the display on/off (by pressing the button) and to open quick menu to turn the phone off or to restart the phone (long hold of the pressed button).

The **Volume** button (no. 5) allows you to adjust the ringtone/notification volume or headphone volume during a call. When setting the lowest volume level of the ringtone, the phone switches to Vibrate mode. When you press briefly the buttons up or down you can view the menu for ringtone profile selection.

Press **Back** (no. 6) to go back one step with respect to the currently opened application (e.g. this option does not apply for confirming the delete of a contact, uninstalling applications and similar actions).

Press the **Home** button (no. 7) to navigate from the current application to the home screen. Press and hold the button on home screen to display the list of recently used apps. Press the respective application to re-open the app. Removing an application from the list (swiping the application to the side) exits the application and frees up the memory previously allocated to the application.

Press **Settings** (no. 8) to display the available options for applications that are running, if accessible.



2.3. Switching the phone on

To switch on a phone that is turned off, press and hold the **Power** button until the phone switches on. The operating system and other components of the phone then start. Wait until the phone completely loads and the system home screen or security screen (e.g. SIM card lock) is displayed.

If you switch on a phone without a SIM card inserted, the phone will display **"No SIM card"**. After the SIM card is inserted, the phone automatically checks whether the card can be used. Without inserting a functional SIM card, however, you can connect to a Wi-Fi network and, for example, sign in to your Google account and use some of the phone's features.

2.4. Setting up your phone for the first time

If you are switching on the new phone for the first time, the "Setup Wizard" will guide you through the first launch and basic settings. You can always change the phone settings set before the first use of the phone (language, Wifi net, etc.) in the phone Settings later.

Select the language in the first step. In this language you will also continue to “Setup Guide”, which consists of several screens, among which you can navigate by pressing the button on the bottom of the screen “Next” / “Back” or “Skip”.

The following messages may appear on the display when you switch on the phone:

- **“Input Phone Lock Code”** – The phone is locked. Insert the correct code to unlock the phone.
- **Input PIN** – SIM is locked. Insert the correct code to unlock the SIM card.
- **Searching** – The phone is searching for network connection.

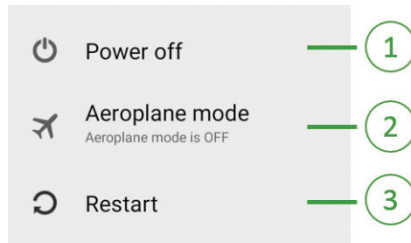
Tip:

Short pressing the power button Power is used to “wake up” when the phone is switched on, but in the sleep mode to conserve battery with the screen off.

2.5. Switching the phone off

To switch the phone off, press and hold the **Power** button until a menu dialog appears on the display. Select **Power Off** (no. 1 on the image below) and press **OK** to confirm.

When you press and hold **Power** you can also activate telephone mode “Airplane” (no. 2) or **Restart** phone (no. 3).



Tip:

A short press of the Power start button is used to put the phone to “sleep” and activate standby mode.

2.6. Charging the battery

The charging connector is located on the top side of the phone above the display. Plug the charger connector into the phone, and plug the charger into the socket. If your phone is on while charging it the charging will be shown in an icon in the status bar. When the phone is off, the display shows shortly a big (battery) charging icon.

If the mobile phone was used until the battery was fully depleted, it may take a while (several minutes) until the charging process is indicated on the screen. The mobile phone cannot be immediately switched on when the battery is fully depleted until the battery is charged to the minimum necessary for switching on the phone.

The phone is equipped with a powerful battery for satisfactory operation in a state of readiness (Sleep/Standby) as well as when in operation with display on and applications running. Charging the battery takes several hours (initially faster, slower at the end) to maximize battery life and utilization of its capacity. We recommend charging the battery only when the phone first reported weak battery (typically 15%) and to charge up to full charge (100%).

We recommend the first three charging cycles performed continuously without interruption (to charge up to 100% and discharge it through normal use to shutdown). This way you achieve the highest battery performance for longer life of the product. It is normal for the phone and charger to heat up during the charging process.

The full battery icon on the display informs the user that the battery is full and the charging cycle has ended.

After the charging cycle, unplug the charger from the socket and the connector from the mobile phone.

**NOTICE:**

- Charging must be done in a well ventilated area at a temperature between -10°C and + 45°C. You must use the charger provided in the package. Using another charger may be dangerous or you will not reach the expected performance or you will shorten the life of the battery in particular.
- If the mobile phone automatically shuts down or displays "Battery is low" (the capacity of the battery is low), you should charge the battery. If the battery was not fully depleted prior to charging, the charging period will be shorter.

2.7. Home screen

Note:

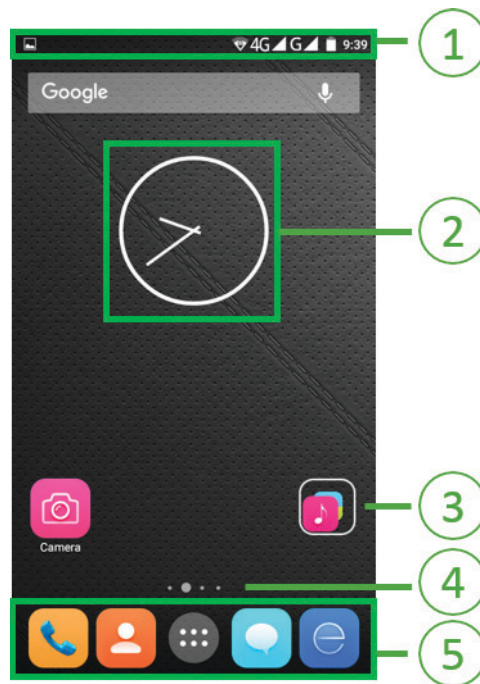
Further, we will call the simple and short touch of the control surface **press** for better intelligibility, the field for entering specific values to the system **key**, the long touch or moving of the finger across the touch screen for entering the range or for moving the object we will call **hold**.

**NOTICE:**

Do not use force for touch control and do not push on the display. If the system does not respond per your expectations, eliminate the cause (e.g. moisture on the display, gloves) or wait until the system responds provided the system is busy with a different application or operation.

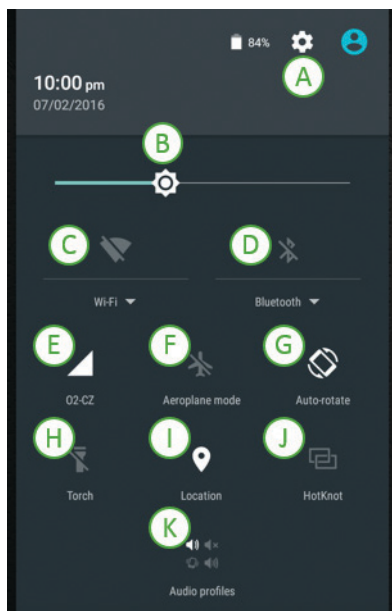
Status line (top line of the display, no. 1 in the picture below) may display e. g. signal indicator, charging battery status, icon of WiFi connection to the internet, ongoing data transmission, missed call, received message and notice about installed applications.

The **home screen** (default) contains the icons of most frequently used items. You can place here the applications, applications widgets (no. 2), folders, or application shortcuts (no. 3) for quick launch. If you have many items that you use frequently, you can expand the home screen (the home screen contains several screens, which you can go through by swiping left or right). The graphic indicator always shows you which part of the home screen you are in (4). The bottom panel (5) contains icons for accessing basic phone features (e.g. Messages, Contacts). You can customize the applications on this panel (see Touch screen controls – move icon).



You can view Information panel with information about current applications notifications by pulling the status bar downwards. After repeated pull down of the upper panel you can view the quick selection menu.

The quick access menu allows the user to quickly enable/disable selected phone functions or display detailed information. Quick menu screen consists of the items Settings (A), Brightness (B), WiFi (C), Bluetooth (D), Data transfer (E) Airplane Mode (F), Automatic display rotation (G), Flashlight (H), position (I), Hotspot (J), Sound profiles (K).



2.8. Touch screen controls

Various finger gestures on the screen can be used to control the phone menu and enter commands. **Tapping** an icon on the main screen or in the phone menu launches/opens the respective application, selects the desired list item or executes the selected option (e.g. Call contact, Edit, Save). You can achieve **Moving icon** on the main screen by touching, holding and then moving the icon to another place. You can **swipe your finger** across the screen (down, up or to the side) to navigate through phone contacts, while browsing web pages, or going through stored photos. To zoom in/out of a web page or a picture place the index finger and thumb on the screen when you **close them together or open them** from each other you change the zoom level. You can also set the auto-rotate display option, which automatically changes the display orientation when switching the phone to landscape mode. This feature is configured under Settings – Display.

Note:

High sensitivity of the capacitive touch screen controls may affect the accuracy of the entry, as well as current and personal conditions or inappropriate protective film cover. Try and learn to use touch controls. Always operate the phone in a dry environment, without gloves or other barriers.

3. Basic features

3.1. Entering text

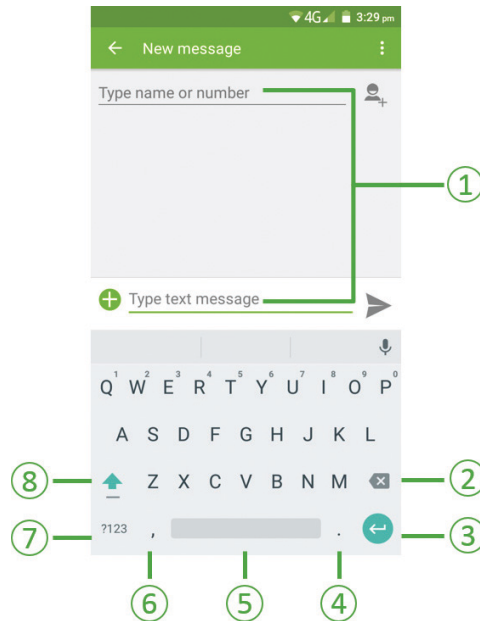
The keyboard automatically appears on the screen of the phone when it is necessary to enter text or numbers (usually after tapping on a text field entry within an application or item, e.g. tapping on the field for typing an SMS message, no. 1 in the image below). The size of the keyboard on the screen can be changed by turning the phone to "landscape" (if automatic display rotation is allowed).

Select a character with accent (e.g. the letter "š" after pressing, holding and moving in the selection for the letter "s") or number (number "2" in the menu for the letter "w") **by holding and moving**.

Remove incorrect characters using the button **"Backspace"** (no. 2) on the right side of the keyboard (left arrow with cross). If you need to delete or insert symbols to text located above, select the desired position by tapping on the spot, make the desired changes and then return to the spot to continue typing by selecting that position.

When you press emoticons (no. 3), you can select characters from emoticons gallery. Key **special characters** (no. 4) shows you when held the menu of punctuation marks. The **Space** key (5) creates a space in the entered text. Press and hold key no. 6 to change the keyboard setting.

Press the key **"?123"** (no. 7 in the picture) to switch to the keyboard with special characters and numbers, press "ABC" to switch back to keyboard with letters. Press the key **"Shift"** (no. 8) to writing in the uppercase mode. Press and hold to activate the uppercase mode until you press the key again.



3.2. Calling

Initiating a call – a call can be made via the Phone application (phone icon). Enter the phone number, including area code in the top line, select one SIM card (if a default SIM card is not fixed) and select Dial. Call information is displayed during an active call. For international calls, tap “O” to switch until the international phone prefix “+” appears on the screen. Enter the country code and full phone number to call.

You can also choose the desired number from the list of saved contacts or calling history. If you enter an incorrect character, use the arrow with a cross to delete. The number you enter can also be stored in the list of contacts.

During the phone call, you can use the respective buttons on the screen to perform various actions, for example, to display the numerical keyboard, activating/deactivating speaker, muting the microphone, put a call on hold/resume a call.

Call history – press icon “last” in the upper part of the display on the screen after starting the application Telephone to view the list of past calls. In this list of all dialed /missed/ rejected calls are different types of calls in different colours (blue arrow - incoming calls, green arrow - outgoing calls, red arrow - missed calls).

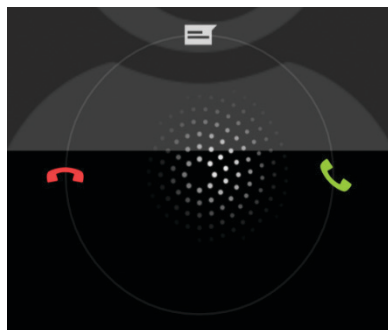
Saving a contact from Call history – press to select record from the history of last calls and select the option “Details”. Press the navigation key Settings and select the option “Edit number before call”. At the top of the screen will display “Add to Contacts”, which

you confirm by pressing and then select whether you want to create a new contact or add the phone number to the one already stored in the phonebook. After filling in the data, press the "checkmark" or the arrow "left" in the upper left corner of the screen to save the contact.

Set speed dial – press and hold the button "1" in the phone number dialling mode you can dial the voicemail when this service is activated (contact your network provider for more information).

Hang up – To conclude a call, tap on the red phone displayed on the screen.

Accept/Reject an incoming call – Tap the phone icon on the screen when you receive an incoming call. The available options will appear (see image below). Press the icon and swipe to the right to accept the call. Press the icon and swipe to the left to reject the call. Press the icon and swipe up to reject the call and send the caller a predefined message. If a headset is connected, you can also use the button located on the headset to accept a call.



Tip:

The ringtone volume of an incoming call can be reduced by pressing the volume up/down rocker.

Emergency calls: Regardless of whether or not a SIM card is installed in the phone, the phone can be used to make emergency calls by dialling: 112.

3.3. Contacts

You can view, create, or synchronize the contacts in the phone with your Gmail contacts or other applications on the Internet or on the phone. In the top menu of the Contacts application you can switch between the contacts marked as favourites and a list of all your stored contacts.

Search through stored contacts – in the application you can search for a contact by moving alphabetically in the list up/down or through the function Search (magnifying glass icon in the top right corner) where you enter the start or part of the saved name of the contact.

Create new contact – select in the app the function addition of new contact (icon of a person with plus sign in the bottom right corner). Then choose where the contact shall be saved (e.g. SIM card, phone), enter the contact name, phone number and any additional information. Save the created contact by pressing “checkmark” or the arrow “left” in the upper left corner of the screen.

**NOTICE:**

The amount of data stored about the contact varies depending on the selected storage type.

Contacts import/export – press the navigation key “Setting” in the app, select Import/Export. First select the location from where the contacts will be selected, then choose the location to where the contacts will be saved. You can then identify only selected contacts or use the bulk selection for all available contacts (top part of the screen, the number of selected contacts is indicated). Press **OK** to confirm your selection and start import/export of contacts.

3.4. Messages

The message overview contains all SMS and MMS messages that were received and sent, as well as message drafts, all divided into conversation threads. When a new message is received, the respective conversation thread is highlighted bold until the conversation is opened.

Write new message – in the bottom right corner of the screen with list of conversations touch the message icon accompanied by “plus” sign. You will be prompted to enter the phone number or the name of the person, which you have stored in the contact list. After entering a few characters (e.g. the first letters of the saved name), you can select a contact from the offered list of all contacts that match the pre-filled characters. Tap the contact you wish to select. Next, tap the area for entering the text message (bottom part of the screen) and enter the SMS or MMS message text. Tap the “arrow” in the bottom right corner of the screen near the entered text to send the message.

Tip:

You can attach your video, photo, audio or contact to your message using the green icon “plus”. By inserting such a file, an SMS message automatically converts into an MMS message, where a different fee may apply. For more information, contact your network provider.

Deleting messages – In the overview of all conversations press and hold the selected conversation to activate menu for deleting messages. Press to mark all the conversations you want to delete and confirm the deletion by pressing the Trash icon located in the upper right corner of the screen.

Message settings – message settings can be configured from the menu upon tapping the “Settings” navigation key on the screen containing all conversations. Under “Settings”, you can configure options for SMS/MMS messages (e.g. delivery notifications, storage type), message notifications (e.g. ringtone, vibration), general settings (e.g. conversation background, font size, CB messages).

Call from the message – if the message contains more numbers, the phone menu can be automatically activated for selection of the required number from the message. Tap on the call button (phone icon on the screen) to dial the number.

3.5. Data connection

Your phone allows to connect to the Internet using GPRS, EDGE, 3G, LTE and WiFi. You can control turn on/off of data transfer in the phone settings (see Phone Settings – Wireless & Networks) or touch menu screen. Current data transfers are shown in the status bar on the SIM card signal icon/with small arrows on the Wi-Fi icon.

Note:

When you first turn on your phone with SIM card inserted, it will automatically configure network services. In case of problems, contact your network provider. The phone automatically switches between faster and slower services according to the current availability and state of the mobile network. Faster transmissions require a stronger signal than slower ones.



NOTICE:

The data transmission via the network of the mobile operator is chargeable. And that even in the case of transfer in the background, e.g. when sending attachments of multimedia messages. Check with your service provider for the range of services and prices.

3.6. Browser

Basic browser is pre-installed in the phone. This browser may not support the correct visualization of all types of web pages. An active data transfer is required to ensure proper Browser functionality.

Tap the browser icon to open the application. The address line is located in the upper part of the screen. The quick access toolbar appears on the bar at the bottom of the screen when you move your finger along the screen (shown on the image below, from left to right: Back, Forward, Open browser pages, Bookmarks/History).



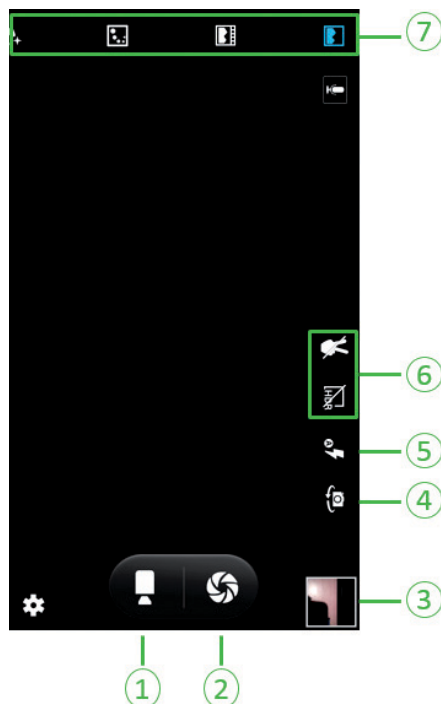
To view the selected web page, press the browser address bar area and use the keyboard to enter its web address. Confirm your selection by tapping Go, which is located at the bottom right part of the keyboard.

3.7. Camera

To zoom in or out of, place your index finger and thumb on the screen (moving the fingers closer together or further apart changes the scale of display). Tapping on a desired location in preview mode for taking photo activates auto-focus in the respective position (the viewfinder colour changes to green after focusing). To take a photo press the volume button on the side of the phone or on the screen the icon Take a picture (no. 2 in the figure below).

Icon in the shape of **videocamera** (no. 1) is used to switch to video recording mode (video recording starts immediately – you can stop and save it by pressing the video camera icon, beside the option to switch the mode back to camera). Captured photos / videos can be immediately viewed by pressing preview (no. 3). Camera app (and similarly Gallery viewing app) stores pictures and recordings into preset memory (Settings/ Storage) of your choice, either in the internal phone memory or on your inserted memory card.

On the basic camera screen you can e.g. switch between the front and rear camera (no. 4), taking photos or video recording, enable/disable flash (no. 5) and use special modes for photography (no. 6 and 7).



3.8. Computer connection

Plug the USB cable to your computer and phone. Wait until the computer operating system installs the driver necessary for communicating with the phone. Open the menu of the Information panel on the main screen of the phone and select the option "Connect as ...". You can select one of the following options: USB storage, Media device, Camera or Charging only.




NOTICE:

Operating system Microsoft Windows 7 and higher supports connecting the phone to a computer.

Note:

During software connection of the internal memory or card to a computer system, the mobile phone will not have access to them. Some applications for the mobile phone, e.g. the camera, cannot be used. The phone restores access to these applications once disconnected from the computer.

3.9. Alarm, stopwatch, timer

Alarm settings – On the alarm clock tab (top left icon) of the Clock application, tap  the “plus” icon and swipe your finger along the dial to set the time you wish the phone to wake you up. As a next step you can activate/deactivate the set alarm (by pressing the toggle button on the right of the set alarm time), choose to repeat it in each weekday, choose the alarm clock ringtone and switch on/off vibration during the alarm.

Tip:

In the Clock app, you can also use it to view the current time in selected cities, use countdown timer or stopwatch (top icons following the icon for the alarm clock in the upper part of the screen from left to right).



4. Phone Settings

Phone settings are divided into several sections. Below are the most frequently used phone settings features.

4.1. Wireless connections and networks

WiFi – the icon for turning on/off WiFi is located on the top right. If Wi-Fi is enabled, a list of available networks will appear as soon as all are loaded and detected. To activate a new connection, click on the selected Wi-Fi network and enter the password, if required. In case of difficulties, contact the administrator of the network to which you cannot connect.

Bluetooth – the icon for enabling/disabling the Bluetooth connection is located on the top right of the screen. Once the phone is switched on, it gradually searches and attempts to detect devices, which are set to Visible on all nearby devices. To activate a new connection, tap on the selected device and enter the pairing code, if required.

SIM cards – used for setting available SIM cards in the phone. To make voice calls, send SMS messages and establish a data connection, you can specify a SIM card (default SIM) or use the “always ask” option and change the SIM card for each call made, text message sent or data connection established. You can select the default services for a selected SIM card, disable or enable their use and configure easy SIM card recognition in case two SIM cards are used in the phone.

Transferred data – the feature is used to display information about the history of data transferred and provides an overview of the amount of data for each phone application for the selected period (custom settings available), as interpreted by the phone. The parent systems however can count also some service transfers, which are not available in the phone itself.

Next...

- a) **Airplane mode** – here you can turn on/off the airplane mode (the phone is not connected to any network and no data are transferred, you can use other applications).
- b) **Default SMS application** – if the phone has two or more applications installed with SMS/MMS functions you can set one as a default.
- c) **Shared connection and portable hotspot** – this function can create your own WiFi/Bluetooth hotspot and share data connection with your close surroundings. In this mode, the phone switches roles from user (client) to provider (wifi/bt). Tethering needs to be disabled to restore the client role.
- d) **Mobile network** – e.g. automatic or manual search of a mobile network for individual operators, setup of data services (in case of problems contact you mobile network provider), option to set network mode. (TIP: for longer standby time of the phone on battery use 2G network.)

4.2. Devices

Display – is used to adjust the setting of wallpaper, brightness, automatic screen rotation, sleep mode, screen saver and font size. Using Remote screen you can share the screen of your phone using a WiFi connection to the remote device (e.g. a supported TV monitor).

Function **“Proximity Sensor Calibration”** allows calibration of the proximity sensor. When you run the calibration do not expose the screen to bright sources of light and the space in front of the sensor located above the display must be free (min. 20 cm).

Function **“G-Sensor calibration”** allows calibration of the position of the device (display rotation, etc.). For correct settings, place the phone on a flat surface with display up and then run the calibration. Do not move the phone during calibration.

Sound and notifications – this item offers the option to add new sound profile using the navigation key Settings, selection of new sound profile or editing of General ringtone profile.

Storage – the default write memory can be configured (phone memory or SD card), display the internal memory overview, utilize the feature that safely removes the SD card or erases the memory card, provided the memory card is inserted into the phone. Data cannot be restored after the memory card is erased.



NOTICE:

The total displayed phone storage is also used for system operations, and therefore it is not possible to use it in its entirety. When updating applications, make sure that there is enough space in the internal memory. We recommend to install your own applications to external storage.

Battery – displaying the overview of each application and their share of battery use.

Application – shows the list of applications installed on the phone. Tapping on a selected application displays details about the application including the option to uninstall/delete the application from the phone. It is not possible to uninstall preset applications.

4.3. Personal

Locate – some applications require specifying the location of your phone or having GPS enabled to ensure proper operation (e.g. Maps, Navigation). the icon for enabling/disabling is located on the top right of the screen. Locate mode provides the option to configure how location information shall be obtained.

Tip:

In Positioning mode, select “Only devices”, other modes may be charged by your operator – contact him for information. To read the location from the GPS satellite system, it is imperative to have a clear view of the sky and the locating process takes some time.

Security – offers the ability to manage the security of the SIM cards using PIN codes (basic information is provided below, for more information contact your mobile network provider), security, the option of automatic screen lock after a specified time interval or encryption of the phone. You can also configure the Device Manager (applications), permit the installation of applications from unknown sources, the installation of suspicious files and configure application rights to using phone features.

Tip:

When you fill out the “Owner information”, selected contact information about the owner can be displayed on locked phone screen in case you lose your phone.

Accounts – the phone supports simultaneous connection to several email accounts using protocols IMAP, POP3 or Exchange for company email account (more information in separate section Accounts). Contact your e-mail server administrator to ensure a proper setup of your e-mail account.

Language and input – here you can change e.g. the language of the phone, of the keyboard and the text input methods.

Backup and restore data – the function “Restore Factory Data” restores the default settings and permanently erases all data stored in the phone (e.g. music, contacts, photos).

Tip:

Before running this function, back up all data from the phone that will be restored to factory settings.

4.4. SIM card security

Being the explicit personal communication tool it is, the SIM card is duly secured against abuse. The most typical operators' procedures are below. Read the SIM card documentations provided by your carrier carefully.

SIM card PIN code:

The PIN code (personal identification number, 4–8 digits) is used to prevent the unauthorized use of your SIM card. If PIN verification is active, you will be prompted to enter your PIN code each time you power on your device. The SIM card will be blocked after three incorrect attempts at entering the PIN code. The following instructions will show you how to unlock the SIM card:

- 1) Enter the correct PUK code into the field displayed to unlock the SIM card.
- 2) Enter the new PIN code and confirm.
- 3) If you are prompted to re-enter the new PIN code, re-enter the new PIN code and confirm.
- 4) If the PUK code is correct, the SIM card will be unlocked and the new PIN code will be activated.

Attention: The SIM card will automatically be locked after three incorrect attempts at entering the PIN code. In this case you will have to use the PUK code to unblock the card. The PUK code is kept with the network carrier.

PUK code:

The PUK code (PIN unlock number, 8 digits) is used to unlock the SIM card after entering an incorrect PIN code. The PUK code is provided by the phone carrier together with the SIM card. If you enter the PUK code incorrectly ten times in a row, the SIM card will be invalidated. Request a new SIM card from your carrier.

PIN2 code:

The PIN2 code (4–8 digits) is used together with the SIM card to configure fixed options and other features. Refer to your carrier and check whether your SIM card supports this feature. The PIN2 code will be blocked after three incorrect attempts at entering the PIN2 code. The following instructions will show you how to unlock the SIM card:

- 1) Enter the correct PUK2 code into the field displayed to unlock the PIN2 code.
- 2) Enter the new PIN2 code and confirm.
- 3) If you are prompted to re-enter the new PIN2 code, re-enter the new PIN2 code and confirm.

PUK2 code:

The PUK2 code (password for unlocking the PIN2 code, 8 digits) is used to unlock a locked PIN2 code. The PUK2 code is provided by the phone carrier together with the SIM card. In case that you were not provided with PUK2 code, contact your telephone operator. If you entered the PUK2 incorrectly ten times, you will not be able to use the PUK2 code features. To use these features, request a new SIM card from your carrier.

4.5. Accounts

It is recommended to link your phone to a Google account to utilize all features of your phone (e.g. Google Play services, synchronizing photos and documents, Google Maps). You can add a new or existing account. In the options for adding an account move between setup steps using arrows on the bottom part of the screen (step back/forward).

Connection to existing Google account – fill out the login information for your Google account, which you use (email address and your password as the next step).

Creating new Google account – select option “Create new account” and fill out your name and surname, enter a unique user name (email address) then select a password, which you will use at login (enter the password twice to eliminate the possibility of unintended error). You can also enter contact information for renewing a forgotten password via SMS or alternative email address. Some steps in the setup can be completely skipped or deferred to a later time, without it having an effect on the functionality of your Google account (e.g. account upgrade, payment details setup).

Tip:

You do not have to enter payment card information into your account unless you plan to use the card to purchase paid applications from the Play store.

**NOTICE:**

When creating a your new account, a reliable internet connection is necessary.

E-mail accounts – the phone simultaneously supports connections to several e-mail accounts via IMAP and POP3 protocols, as well as Exchange for company e-mail accounts. Contact your e-mail server administrator to ensure a proper setup of your e-mail account.

Additional accounts – when you install other applications, you can add and manage your custom accounts as well (e.g. Skype, company accounts, etc.).

4.6. System

Date and time – the current date and time of the phone can be configured, as well as automatic GSM network or GPS synchronization, time and date format.

Schedule on/off – this function allows to schedule automatic turning on or off of the phone at a scheduled time and day of the week.

**NOTICE:**

If your SIM card is protected with a PIN code, your phone will not sign in to the network upon starting automatically until you insert a valid PIN code.

Accessibility – used to customize your phone in case of problems with its control (e.g. gestures for zooming, large text, pronouncing the password, length of delay of touch and hold).

Print – this menu item is prepared for installing printing services.

Phone information – find device system information here.

5. Technical specifications

Display size: 5.5" (IPS LCD technology)

Resolution: HD 720 × 1280 (16.7 million colours)

Accelerometer, light sensor, proximity sensor, gravity sensor

Dual SIM

CPU: MTK MT6735 (Quad Core 1.3 GHz)

GPU: Mali-720

RAM memory: 1 GB

Storage memory: 8 GB EMMC NAND

Card slot for Micro SDHC (up to 32 GB)

Front camera: 2 MP

Back camera: 8,0 MP (Automatic focus, panorama, digital zoom, LED flash, capturing photos from multiple angles, live photos)

GSM 850/900/1800/1900 MHz

FDD LTE 800/900/1800/2100/2600

WCDMA 900/2100

Battery: 2300 mAh Li-Ion

Input power: 5 V 1000 mA

OS: Android 5.1 Lollipop

WiFi: IEEE 802.11 b/g/n

Bluetooth: BT 4.0 EDR, A2DP

GPS/AGPS

FM radio (87.5–108 MHz)

Micro USB 2.0

Dimensions: 155 × 77 × 7.5 mm

Weight: 161 g (including battery)

Accessories: USB cable, power adapter

The above given specifications can change without prior notice.

Manufacturer address: FAST ČR, a.s., Černokostecká 1621, 251 01 Říčany

The original version is in Czech.

The CE symbol shown on the unit, in the user's manual and on the package indicates the unit meets the basic requirements of guideline R&TTE, 1995/5/EC, Guideline for low voltage 73/23/EEC. The declaration of conformity can be found at www.sencor.cz.

INSTRUCTIONS AND INFORMATION REGARDING THE DISPOSAL OF USED PACKAGING MATERIALS

Dispose of packaging material at a public waste disposal site.



DISPOSAL OF USED ELECTRICAL AND ELECTRONIC APPLIANCES

The meaning of the symbol on the product, its accessory or packaging indicates that this product shall not be treated as household waste. Please, dispose of this product at your applicable collection point for the recycling of electrical & electronic equipment waste. Alternatively in some states of the European Union or other European states you may return your products to your local retailer when buying an equivalent new product.

The correct disposal of this product will help save valuable natural resources and help in preventing the potential negative impact on the environment and human health, which could be caused as a result of improper liquidation of waste. Please ask your local authorities or the nearest waste collection centre for further details. The improper disposal of this type of waste may fall subject to national regulations for fines.

For business entities in the European Union

If you wish to dispose of an electrical or electronic device, request the necessary information from your seller or supplier.

Disposal in other countries outside the European Union

If you wish to dispose of this product, request the necessary information about the correct disposal method from local government departments or from your seller.



This appliance complies with EU rules and regulations regarding electromagnetic and electrical safety.

Changes to the text, design and technical specifications may occur without prior notice and we reserve the right to make these changes.

SENCOR®

EN Warranty conditions

Warranty card is not a part of the device packaging.

This product is warranted for the period of 24 months from the date of purchase to the end-user. Warranty is limited to the following conditions. Warranty is referred only to the customer goods using for common domestic use. The claim for service can be applied either at dealer's shop where the product was bought, or at below mentioned authorized service shops. The end-user is obligated to set up a claim immediately when the defects appeared but only till the end of warranty period. The end user is obligated to cooperate to certify the claiming defects. Only completed and clean (according to hygienic standards) product will be accepted. In case of eligible warranty claim the warranty period will be prolonged by the period from the date of claim application till the date of taking over the product by end-user, or the date the end-user is obligated to take it over. To obtain the service under this warranty, end-user is obligated to certify his claim with duly completed following documents: receipt, certificate of warranty, certificate of installation.

This warranty is void especially if apply as follows:

- Defects which were put on sale.
- Wear-out or damage caused by common use.
- The product was damaged by unprofessional or wrong installation, used in contrary to the applicable instruction manual, used in contrary to legal enactment and common process of use or used for another purpose which has been designed for.
- The product was damaged by uncared-for or insufficient maintenance.
- The product was damaged by dirt, accident of force majeure (natural disaster, fire, and flood).
- Defects on functionality caused by low duality of signal, electromagnetic field interference etc.
- The product was mechanically damaged (e.g. broken button, fall).
- Damage caused by use of unsuitable media, fillings, expendable supplies (batteries) or by unsuitable working conditions (e.g. high temperatures, high humidity, quakes).
- Repair, modification or other failure action to the product by unauthorized person.
- End-user did not prove enough his right to claim (time and place of purchase).
- Data on presented documents differs from data on products.
- Cases when the claiming product cannot be indentified according to the presented documents (e.g. the serial number or the warranty seal has been damaged).

Authorized service centers

Visit www.sencor.eu for detailed information about authorized service centers.

SENCOR®

Let's live!



www.sencor.cz

Designed in Europe by Sencor®, Made in China



M