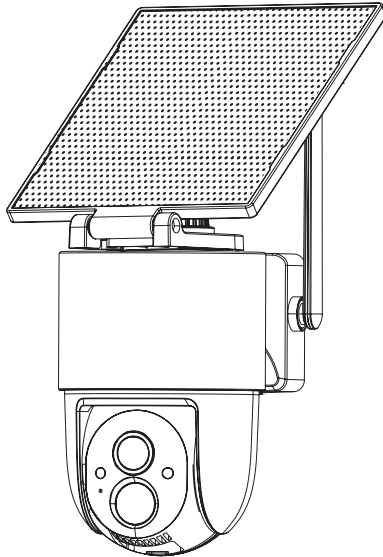


Smart Battery Camera

User Manual

Q41-S



✉:support@arogal.ai
☎: +1 218-292-2199

Wifi

Catalog

I.Product Introduction-----	1
II.Setup APP -----	3
III. APP Introduction-----	11
IV.Mounting the Camera-----	13
V.FAQs -----	17

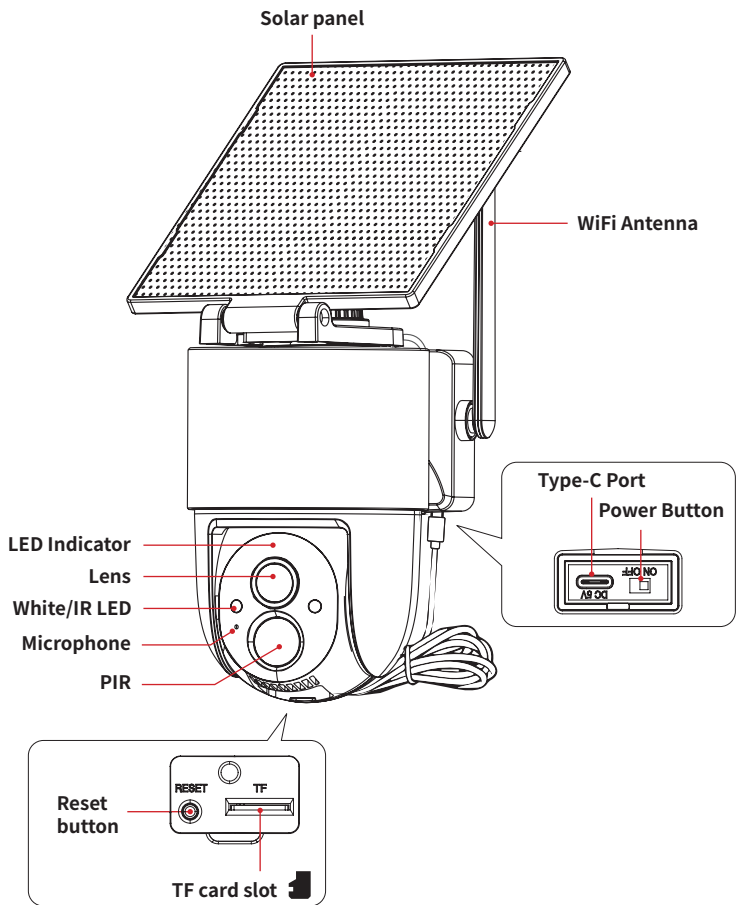
Contact Us:

If you have any questions about our products or services, please feel free to contact us

✉: support@arogal.ai

☎: +1 218-292-2199

I. Product Introduction



Charge the camera

Please plug the camera into a power source to charge the camera for about 10-13 hours by using the provided USB cable. After adding the camera to the App, the App will display the battery status.

Storage Options

You can store your event videos on a TF card (not included) or in cloud storage, based on your preference.

Option 1: TF Card. Please install the TF card only when the camera is powered off, and use a Class 10 or higher card with 8 GB-128 GB of storage.

Option 2: Cloud Storage. New users receive free lifetime cloud storage (8-second clips with 24-hour rolling retention) .

II. Setup APP

1. Download and install APP

Option 1 : Scan the QR code below to download the "Arogal" App and set it up on your mobile phone.

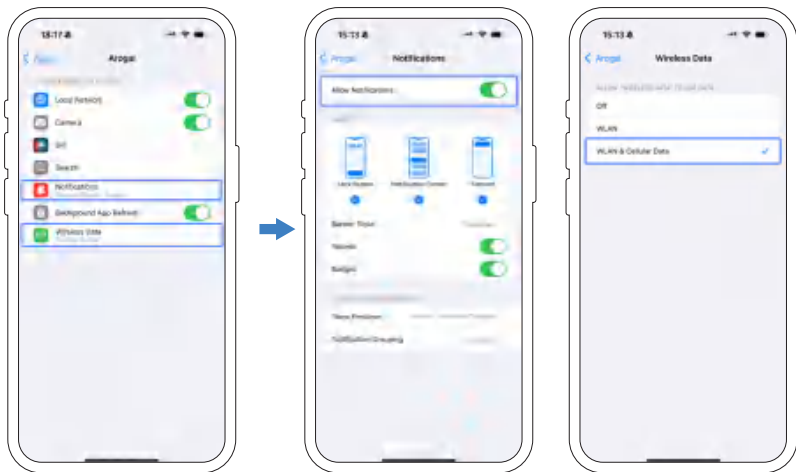


Option 2: Search "Arogal" App and download it from Google Play Store for Android or App Store for iOS.

· Please confirm the Arogal App icon before downloading it. Otherwise, you can't add the camera successfully.



· Allow "Arogal" to use mobile cellular data and wireless network. Otherwise, you may fail to add 4G camera.
· Allow "Arogal" to access phone location and push messages to the phone. Otherwise, the phone will not receive alerts from the Arogal when motion detection is triggered.

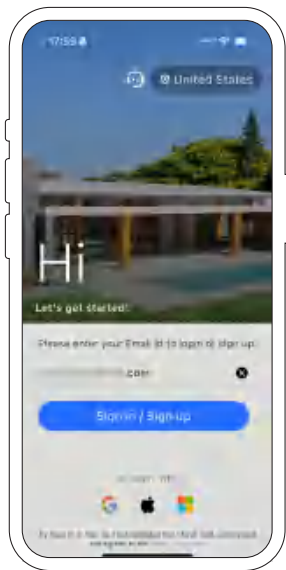


2.Register Account

- (1) Create an account using your email address, and complete email verification.
- (2) Set a password for your account and keep it secure. Follow the app's on-screen instructions to complete setup.

Important Notes:

- During download and account setup, tap "Allow" or "Agree" to grant the Arogal App access to your device's Camera, Location, Storage or Microphone, Notifications, and Wireless Data. Without these permissions, the camera may have reduced functionality or incomplete settings.
- Some email providers—such as att.net, msn.com, and hotmail.com—apply strict filtering to messages from unsubscribed senders. If you do not receive the verification email, consider using a different email address to ensure smooth delivery.



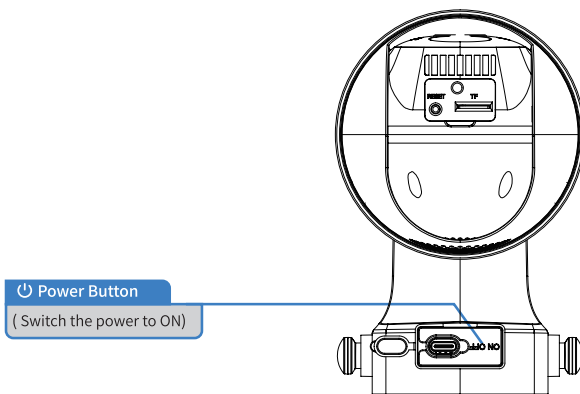
3. Adding the camera to App

Important Note:

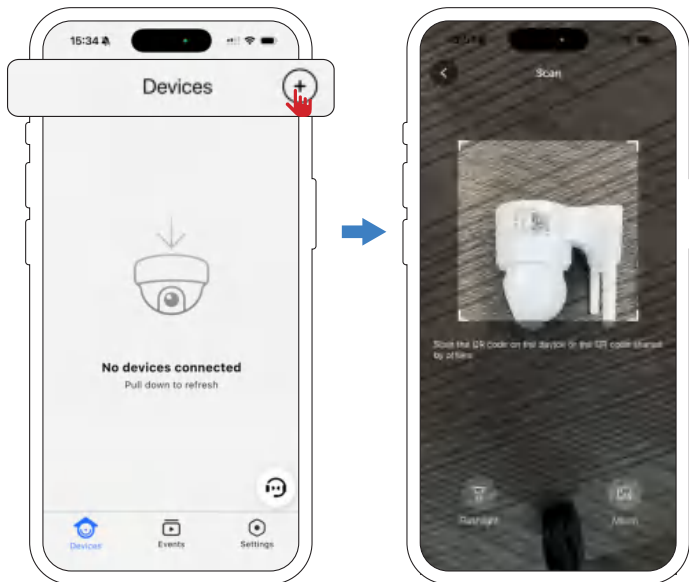
Before pairing with the camera, please ensure your phone is connected to 2.4Ghz WiFi and has Bluetooth turned on, and confirm your router password before starting the pairing process.

Step 1. Power on the camera and turn on Bluetooth on your phone.

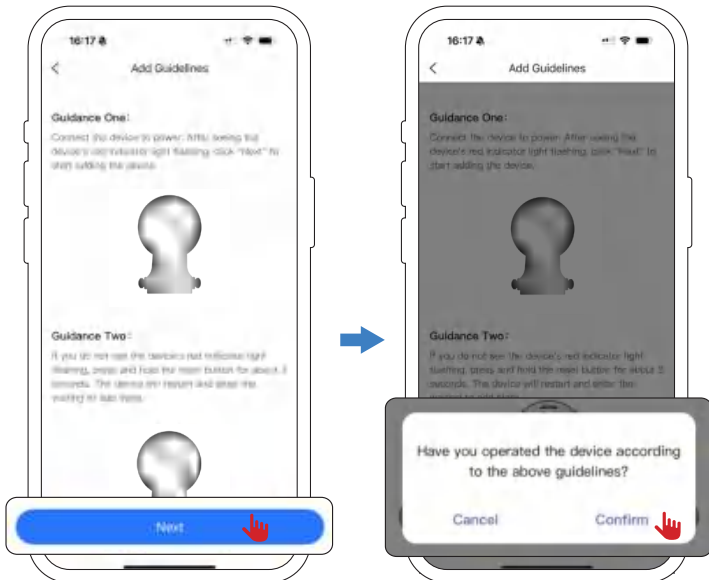
(**Note:** If the app detects that Bluetooth is disabled on your phone, a window will pop up. Please tap "Settings" to enable Bluetooth.)



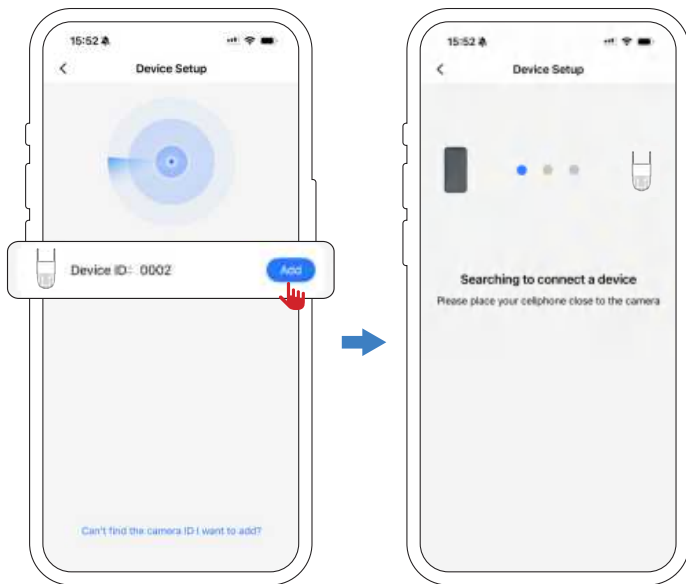
Step 2. Open the "Arogal" APP, click on "+", then use your phone to scan the QR code on the camera.



Step 3. Please confirm the camera status, when its red indicator light is blinking, then click 'Next', and finally click 'Confirm' to complete the operation.

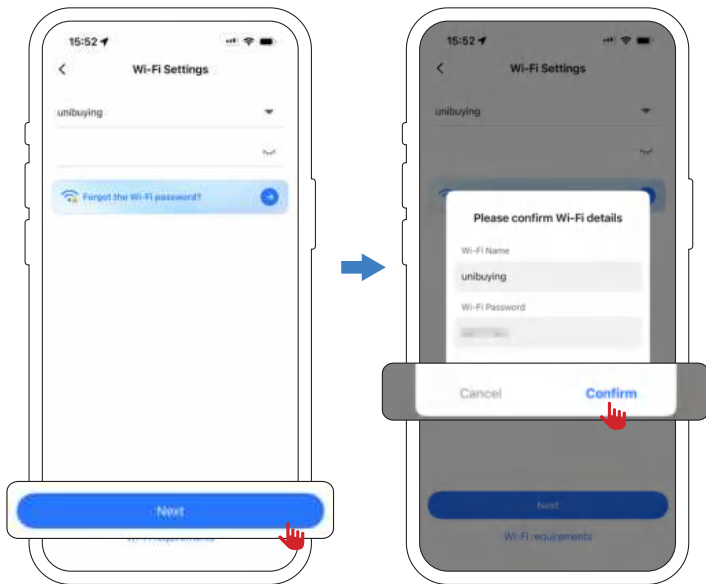


Step 4. Wait for your phone to detect your camera, select the correct camera's Bluetooth name, and tap "Add ".Wait for the app to connect to your device. (If the app doesn't display a window to detect your device, check if the camera is turned on.)



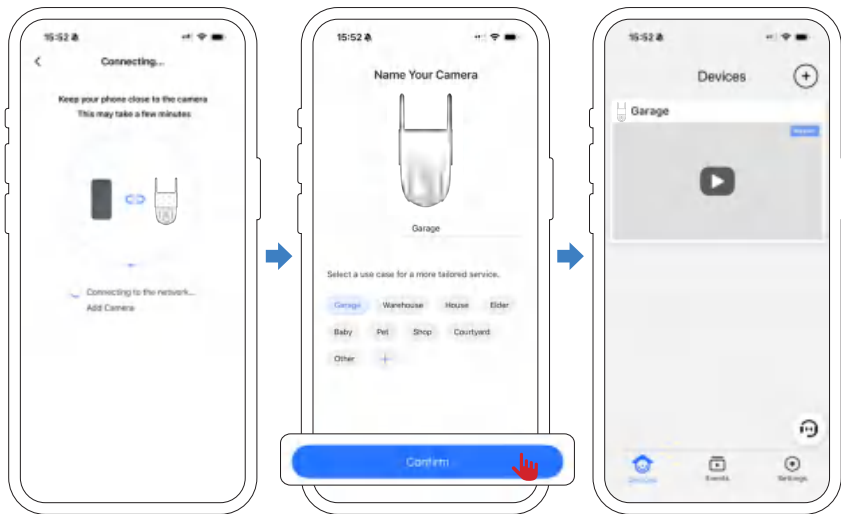
Step 5: Please ensure your phone is connected to a 2.4GHz Wi-Fi network (if currently on a 5GHz network, manually switch to a 2.4GHz network), enter the correct Wi-Fi password, and then tap "Next".

Step 6: On the pop-up interface, please reconfirm the router's Wi-Fi password, and after verifying it is correct, tap "Confirm".

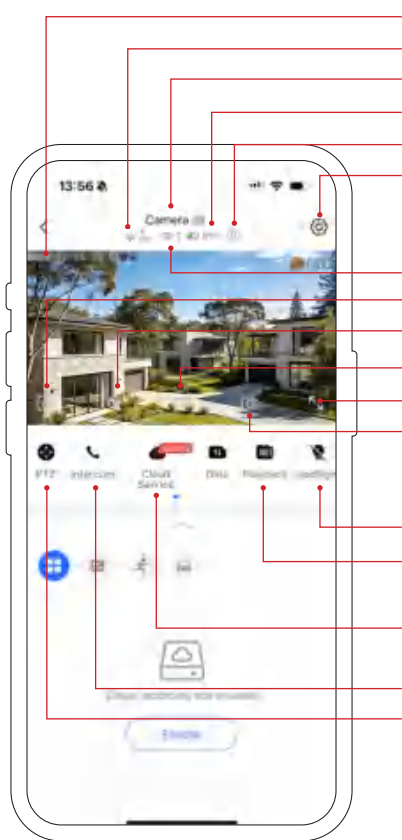


Step 7. Bring your phone close to the camera and keep it still, waiting for the scan to finish promptly tone. (The connection takes about 2 minutes. Please keep the device powered on and Bluetooth enabled. If it takes too long, please check the device status.)

Congratulations! The device is successfully connected. Next, you can set a name for this camera.



III. APP Introduction



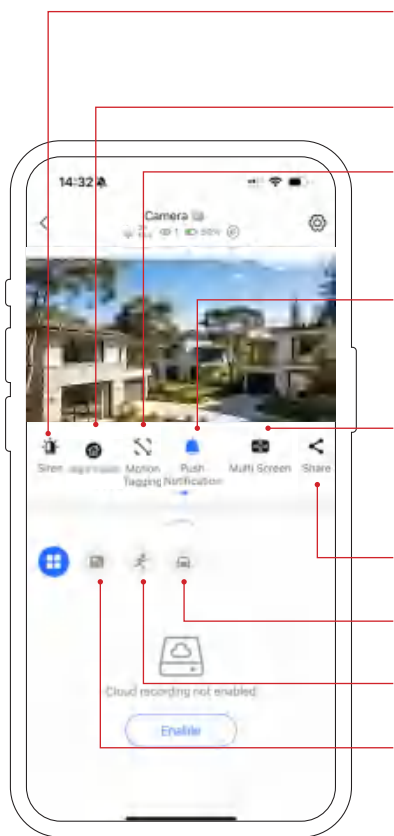
- Time of the camera
- WiFi Signal Strength
- Camera Name
- Battery level
- Working Mode
- Device settings

- Number of users
- Definition of the video (FHD/HD)
- Camera sound ON/OFF
- Manual Recording
- Full screen preview
- Screenshot

- Spotlight:** Spotlight ON/OFF
- Playback:** TF Card storage

- Cloud Service:** Subscribe to a plan to upgrade your cloud storage.
- Intercom:** Click to enable two-way audio
- PTZ:** PTZ control of the camera





Siren: Click to enable the one-click alert sound.

Night Vision Mode Settings

Motion Tagging: Enable this option to show a person detection box in the live view.

Push Notification: Enable/Disable Alert Notifications, when notification is disabled, you will not receive any alerts.

Multi Screen: This function is available only when two or more devices are connected.

Share the device

Vehicle detected

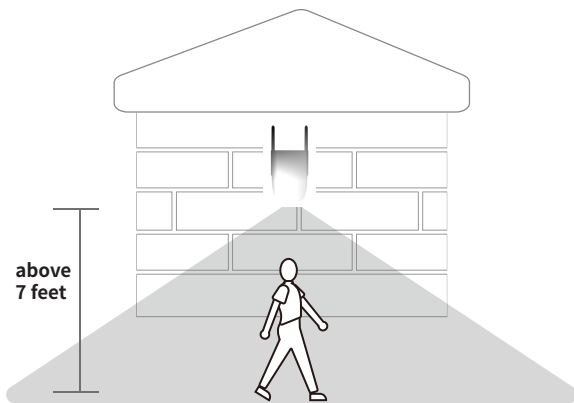
Person detected

Motion detected

IV. Mounting the Camera

Choose the installation location for the camera.

We suggest installing the camera above 7 feet. You can adjust the camera angle based on the real-time video on your phone so that the camera focuses on your activity area, thereby obtaining more accurate motion detection alerts.



(1) Adjust PIR Sensitivity

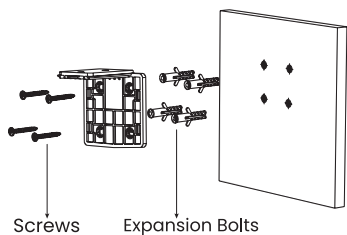
You can adjust the sensitivity of the PIR sensor according to environmental needs in "Device settings → Events → Motion Detection Sensitivity and select an appropriate level".

(2) Optimize Alarm Zones

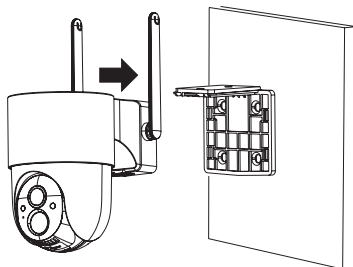
It is recommended to install the camera away from grass or foliage to reduce false alarms. You can also select specific motion detection zones. In "Device settings → Events → Detection Area," manually delineate the specific area that needs to be monitored.

Camera Installation

Step 1. Attach the mounting bracket to the wall.



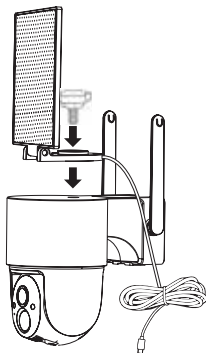
Step 2. Insert the camera into the camera bracket.



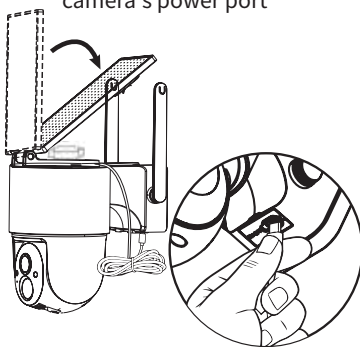
Solar Panel Installation

All-in-One Installation

Step 1. Secure the solar panel to the top of the camera using screws.

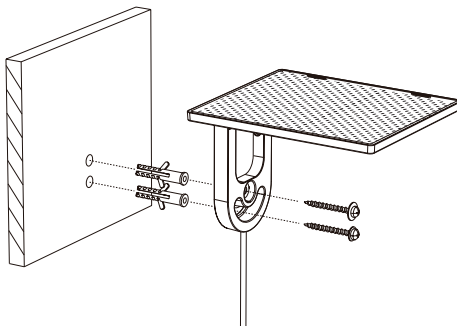


Step 2. Adjust the angle of the solar panel, and insert its wire into the camera's power port.

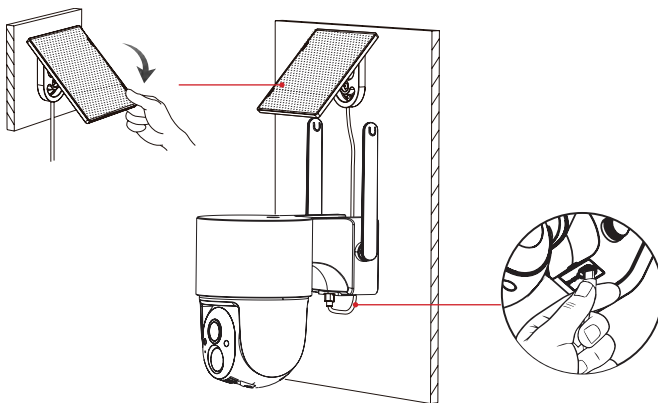


Split Installation

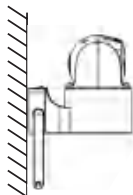
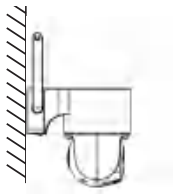
Step 1. Secure the bracket to the wall using screws.



Step 2. Adjust the angle of the solar panel, it is recommended to tilt it facing south. Then insert its wire into the camera's power port (**Note:** The power plug should be inserted through the rubber grommet hole to prevent water damage to the camera).



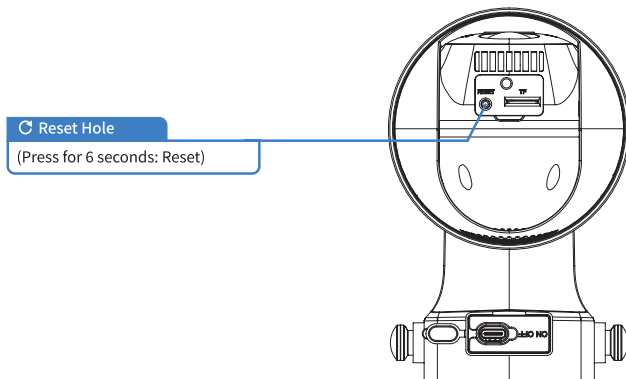
The following are the directions (picture 1) for the camera installation.



V.FAQS

1.How to reset the camera ?

Press and hold the reset button for 6 seconds to reset the camera. You need to release the button when you hear the prompt tone. After resetting the camera, you must follow all steps to add the camera. (Refer to page 5 for the process of re-adding the camera)



2.Why can't the camera connect to Wi-Fi?

- (1) Press and hold the Reset button until you hear a voice prompt, then release it and wait for the "beep-beep" sound. Repeat this process to complete the setup.
- (2) Check that the Wi-Fi password you entered is correct. Reboot the router, then try adding the camera again.(Refer to page 5 for the process of re-adding the camera)
- (3) Make sure your router does not have AP isolation, MAC filtering, or other access restrictions enabled. On some phones, you need to grant location permission and turn on location services to scan for Wi-Fi networks and view the Wi-Fi list.

3. How do I reconnect the camera after changing my router or Wi-Fi password?

First, delete the camera from the app. Then, press and hold the reset button for 6 seconds until you hear a sound. Finally, re-add the camera to the app and select your new Wi-Fi SSID and password.

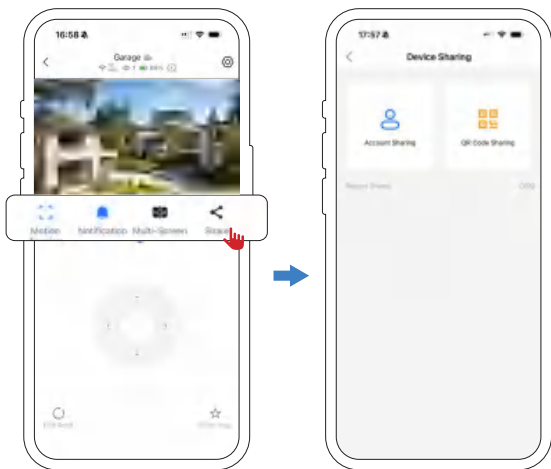
4. How to share your camera ?

Open the camera's Live page and tap "Share".

Option 1: Select Share via account Sharing, then enter the recipient's account ID.

Option 2: Select Share via QR Code Sharing, and have the recipient scan the code to access the shared device.'

Note: The recipient must register and log in to an Arogal account before they can accept the share. To accept an invitation, open the Arogal app, go to **Settings** → **Share List**, and tap **Accept** on the invitation.



5. Why am I receiving too many activity alerts or missing alerts?

- (1) Adjust the motion detection sensitivity to suit your needs: Go to **Device settings** → **Events** → **Motion Detection Sensitivity** and select an appropriate level.
- (2) Check for objects that may accidentally trigger the PIR sensor, such as air conditioner outdoor units, leaves, changing light, passing vehicles, or pedestrians. Adjust the device's mounting angle to minimize false alarms.
- (3) Set the detection area to reduce false alerts: Go to **Device settings** → **Events** → **Detection Area**, then select the specific area for alerts.

6. What to do if the image is blurry ?

- (1) Switch the image mode to HD: **Go to Live View** → **tap HD**, then switch to FHD resolution displayed in the upper-left corner.
- (2) Confirm the lens protective film has been removed.
- (3) Check for dirt or smudges on the lens.

7. What to do if there are no video recordings after subscribing to cloud storage?

- (1) Confirm that the cloud storage subscription is active.
- (2) Confirm that the cloud storage recording switch is turned on (**Device settings** → **More Options** → **Cloud video**). If you have not subscribed to cloud storage, subscribe first.

8. What to do if the camera does not recognize the TF Card ?

- (1) The camera only supports TF cards with a capacity of 8–128 GB and Class 10 or

higher (U1 or above). It does not support TF cards of 128 GB or above.

(2) Ensure that you insert the TF card correctly (a click sound should be heard when fully inserted), checking that the insertion direction and position are correct.

(3) Reinsert the TF card. Power of the camera, insert the TF card into the camera's TF card slot in the correct orientation, and then power on the camera. If the camera prompts you to format the TF card, click "Format TF Card". If the TF card still cannot be recognized, use a card reader to format the TF card to FAT32 format on a computer, then reinsert it into the camera.

(4) If the TF card cannot be recognized during use, power of the camera, remove and reinsert the TF card to verify whether it can be recognized. If it still cannot be recognized, reformat the TF card or replace it.

9.What to do if the camera's battery life is short ?

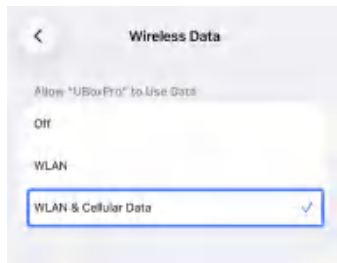
(1) Check if the solar panel is properly connected to the camera.

(2) Ensure the solar panel is exposed to sunlight and that its surface is free from debris such as leaves.

(3) Lower the sensitivity to reduce the number of alarms: Go to Device settings- >Events → Motion detection sensitivity and select the appropriate detection sensitivity.

10.What to do if the phone cannot display real-time videos when out of the home ?

When at home,the phone can view real-time videos by connecting to WiFi.But when out and using 4G or 5G mobile data, if the phone cannot view real-time videos from



11. What to do if the solar panel is not charging?

- (1) Check if there are any foreign objects covering the surface of the solar panel.
- (2) Ensure that the solar panel receives direct sunlight and is exposed to sunlight for as long as possible.
- (3) Check if the solar panel connection lines are properly inserted, and reinsert them if necessary.

If you have any questions about our products or services, please feel free to contact us

✉: support@arogal.ai

☎: +1 218-292-2199

Compliance Statement

FCC WARNING:

Any Changes or modifications not expressly approved by the party responsible for compliance could void the user's authority to operate the equipment. This device complies with part 15 of the FCC Rules. Operation is subject to the following two conditions:

- (1) This device may not cause harmful interference.
- (2) This device must accept any interference received, including interference that may cause undesired operation.

Note: This equipment has been tested and found to comply with the limits for a Class B digital device, pursuant to part 15 of the FCC Rules. These limits are designed to provide reasonable protection against harmful interference in a residential installation. This equipment generates uses and can radiate radio frequency energy and, if not installed and used in accordance with the instructions, may cause harmful interference to radio communications. However, there is no guarantee that interference will not occur in a particular installation. If this equipment does cause harmful interference to radio or television reception, which can be determined by turning the equipment off and on, the user is encouraged to try to correct the interference by one or more of the following measures:

- Reorient or relocate the receiving antenna.
- Increase the separation between the equipment and receiver.
- Connect the equipment into an outlet on a circuit different from that to which the receiver is connected.
- Consult the dealer or an experienced radio/TV technician for help.

FCC RADIATION EXPOSURE STATEMENT:

This equipment complies with FCC radiation exposure limits set forth for an uncontrolled environment. This equipment should be installed and operated with the minimum distance of 20cm between the radiator & your body. This transmitter

must not be co-located or operated in conjunction with any other antenna or transmitter. **FCC ID: 2BU9W-Q41-S**

CE Simplified EU Declaration of Conformity

This device is in compliance with the essential requirements and other relevant provisions of Directive 2014/53/EU.

Correct Disposal of This Product

This symbol means the product must not be discarded as household waste and should be delivered to an appropriate collection facility for recycling. Proper disposal and recycling help protect natural resources, human health, and the environment. For more information on the disposal and recycling of this product, contact your local municipality, disposal service, or the shop where you bought this product.