

**MODEL/S**  
**GGSTLW70RC2**  
**GGSTLW100RCW2**

**V1.3 | 0425**



ESSENTIALS FOR LIFE

# **User Manual**

**Top Load  
Washing Machine**

**SÔLT**



# Purchase Details



---

For future reference, please record the following information which can be found on the rating plate and the date of purchase which can be found on your sales invoice.

---

## STORE DETAILS

STORE NAME | \_\_\_\_\_

ADDRESS | \_\_\_\_\_

TELEPHONE | \_\_\_\_\_ PURCHASE DATE | \_\_\_\_\_

---

## PRODUCT DETAILS

MODEL NO. | \_\_\_\_\_

SERIAL NO.\* | \_\_\_\_\_



<b>Contents</b>	<b>2</b>	<b>Purchase Details</b>
	<b>5</b>	<b>Welcome</b>
	<b>6</b>	<b>Safety Instructions</b>
	<b>8</b>	<b>Your Washing Machine</b>
	<b>9</b>	<b>Installation</b>
	<b>12</b>	<b>Operating Instructions</b>
	<b>16</b>	<b>Cleaning &amp; Maintenance</b>
	<b>18</b>	<b>Troubleshooting</b>
	<b>20</b>	<b>Technical Specifications</b>
	<b>21</b>	<b>Attach Your Receipt</b>
	<b>22</b>	<b>Warranty Information</b>

## Customer Care

---

Sølt recommends the use of original spare parts. When contacting our customer service team, please ensure that you have the following information at hand (which can be found on your appliances' rating plate).

- Model Number
- Serial Number

**This page  
is intentionally  
left blank**

# Welcome

Congratulations on purchasing your new Washing Machine! The Sôlt brand is proudly distributed within Australia by Residentia Group Pty Ltd.

## Residentia Group

—  
Head Office.  
165 Barkly Ave  
Burnley  
Victoria 3121  
Australia

—  
ACN.  
600 546 656

—  
Online.  
[residentia.group](http://residentia.group)

Sôlt  
—  
Online.  
[www.solt.house](http://www.solt.house)

—  
Instagram.  
[/solt.house](https://www.instagram.com/solt.house)

—  
Facebook.  
[/solt.appliances](https://www.facebook.com/solt.appliances)

Please refer to the warranty card at the rear of this manual for information regarding your product's parts and labour warranty, or visit us online at [www.residentia.group](http://www.residentia.group)

At Residentia Group, we are customer obsessed and our Support Team are there to ensure you get the most out of your appliance. Should you want to learn more about your appliance features, and importantly taking care of your appliance when cleaning, our Support Team are here to help.

You can use our online Support Centre at anytime by visiting <http://support.residentiagroup.com.au>, or you can contact us via calling us on 1300 11 HELP (4357).

It is important that you read through the following use and care manual thoroughly to familiarise yourself with the installation and operation requirements of your appliance to ensure optimum performance.

Again, thank you for choosing an Sôlt appliance and we look forward to being of service to you.

Kind Regards,  
The Residentia Team

# Safety Instructions

For your safety, the information in this manual must be followed to minimize the risk of fire or explosion, electric shock, or to prevent property damage, personal injury or loss of life.

- This appliance is not intended for use by persons (including children) with reduced physical, sensory or mental capabilities or lack of experience and knowledge unless they have been given supervision or instruction concerning use of the appliance by a person responsible for their safety.
- Children should be supervised to ensure that they do not play with the appliance.
- If the supply cord is damaged, it must be replaced by the manufacturer, its service agent or similarly qualified persons in order to avoid a hazard.
- The new hose-sets supplied with the appliance are to be used and that old hose-sets should not be reused.
- The openings must not be obstructed by a carpet.
- This appliance is intended for personal, domestic or household use only.

Model	Washing Capacity	Standard Water Pressure
GGSTLW70RC2	7.0kg	0.03MPa~0.8MPa
GGSTLW100RCW2	10.0kg	0.03MPa~0.8MPa

Explanation of the following signal words:

## WARNING!

This signal word indicates a potentially dangerous situation which may result in death or serious injuries unless it's avoided.

## CAUTION!

This signal word indicates a potentially dangerous situation which may result in slight or minor injuries or damage to property and the environment.

## NOTE!

This signal word indicates a potentially dangerous situation which may result in slight or minor injuries.

## WARNING!

### POTENTIAL ELECTRIC SHOCK

- **This appliance is for indoor use only.**
- **Do not position washing machine in a humid place.**
- Do not insert your hands into running spin-dry tub.
- If the spin-dry tub does not stop within 15 seconds after opening the cover, please stop using the machine and have it repaired.
- Before performing any maintenance on the device, unplug the appliance from the mains.
- Always unplug the machine and turn off the water supply after use. The max. inlet water pressure, in pascals. The min. inlet water pressure, in pascals.
- To ensure your safety, power plug must be inserted into an earthed three-pole socket. Check carefully and make sure that your socket is properly and reliably earthed.
- Make sure that the water and electrical devices must be connected by a qualified technician in accordance with the manufacturer's instructions and local safety regulations.

### RISK TO CHILDREN

- The appliance can be used by children aged from 8 years and above and persons with reduced physical, sensory or mental capabilities or lack of experience and knowledge if they have been given supervision or instruction concerning use of the appliance in a safe way and understand the hazards involved. Children shall not play with the appliance. Cleaning and user maintenance shall not be made by children without supervision.
- Animals and children may climb into the machine. Check the machine before every operation.
- Young children should be supervised that they do not play with the appliance.
- Machine may be very hot during the operation. Keep kids and pets far away from the machine

during the operation very wet rooms as well as in the rooms with explosive or caustic gas.

- **Remove all packaging before using the appliance.** Otherwise, serious damage may result.
- The washing machine with single inlet valve only can be connected to the cold water supply. The product with double inlet valves should be correctly connected to the hot water and cold water supply.
- Plug must be accessible after installation.

#### RISK OF EXPLOSION

- Do not wash or dry articles that have been cleaned in, washed in, soaked in, or dabbed with combustible or explosive substances (such as wax, oil, paint, gasoline, degreasers, dry-cleaning solvents, kerosene, etc.) This may result in fire or explosion.
- Thoroughly rinse items of washing by hand before using the washing machine.

#### CAUTION!

#### INSTALLING THE PRODUCT

- This washing machine is for indoor use only.
- It is not intended for built-in use.
- The openings must not be obstructed by a carpet.
- Washing machine shall not be installed in bath room or very wet rooms as well as in the rooms with explosive or caustic gases.
- Remove all packaging before using the appliance. Otherwise, serious damage may result.
- Washing machines with single inlet valve only can be connected to the cold water supply. Models with double inlet valves should be correctly connected to the hot water and cold water supply.
- Both the cold and hot water inlet hoses must be connected. If you only use one hose, some water may be expressed through the other outlet.
- Plug must be accessible after installation.

#### RISK OF DAMAGING THE APPLIANCE

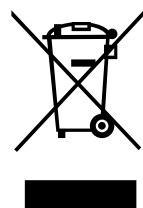
- Your product is only for home use and is only designed for the textiles suitable for machine washing.
- Do not climb up and sit on top cover of the machine.
- Do not lean against machine door.
- Cautions during Handling Machine:
  1. The accumulated water shall be drained out of the machine.
  2. Handle the machine carefully. Never hold each protruded part on the machine while lifting. Machine door can not be used as the handle during the conveyance.
  3. This appliance is heavy. Transport with care.
- Please do not close the door with excessive force.
- Do not wash carpets.

#### OPERATING THE APPLIANCE

- **Before washing the clothes at first time, the product should be operated in one round of the whole procedures without the clothes inside.**
- Do not wash flammable and explosive or toxic solvents.
- Do not use gasoline and alcohol etc. as detergents.
- Please only select the detergents suitable for machine washing, especially for drum.
- Make sure that all pockets are emptied. Sharp and rigid items such as coin, brooch, nail, screw or stone etc. may cause serious damages to this machine.
- Please check whether the water inside the drum has been drained before opening its door. Please do not open the door if there is any water visible.
- Be careful of burning when the product drains hot washing water.
- Never refill the water by hand during washing.
- After the program is completed, Please wait for two minutes to open the door.

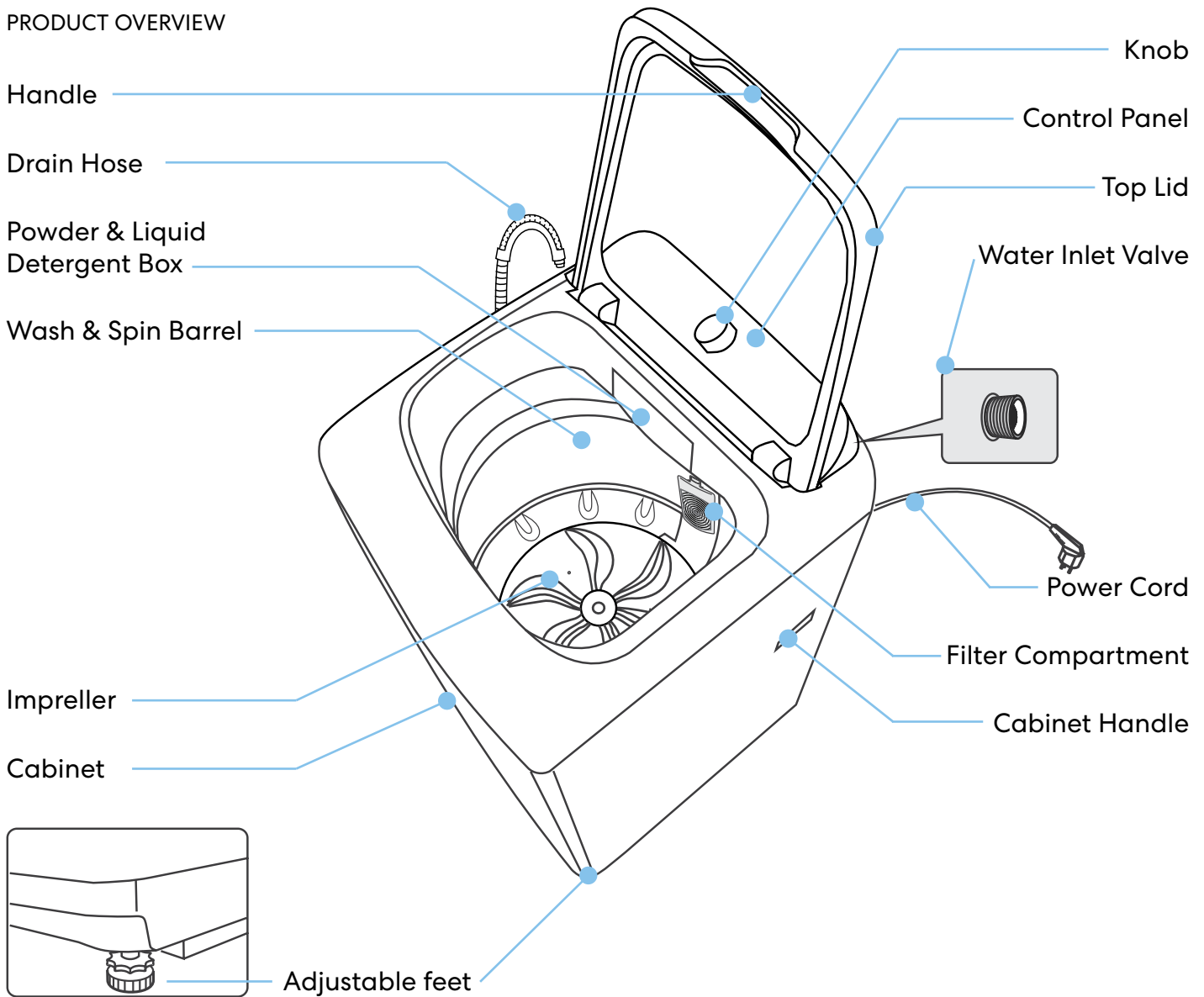
#### DISPOSAL

- For disposing of package and the appliance please go to a recycling center. Therefore cut off the power supply cable and make the door closing device unusable.
- Cardboard packaging is manufactured from recycled paper and should be disposed in the waste paper collection for recycling.
- By ensuring this product is disposed of correctly, you will help prevent potential negative consequences for the environment and human health, which could otherwise be caused by inappropriate waste handling of this product.
- For more detailed information about recycling of this product, please contact your local city office and your household waste disposal service
- **Do not dispose this product as unsorted municipal waste. Collection of such waste separately for special treatment is necessary.**

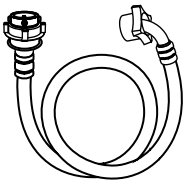


# Your Washing Machine

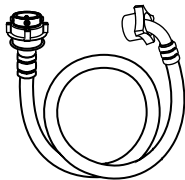
## PRODUCT OVERVIEW



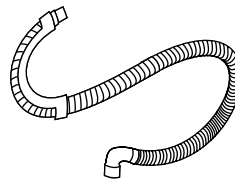
## ACCESSORIES



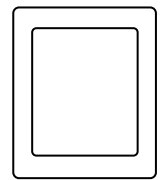
Cold Water Supply Hose



Hot Water Supply Hose



Upper Drain Hose



Cabinet Base board

## NOT SHOWN BUT ALSO INCLUDED

- 1 × User Manual
- 1 × Quick Start Guide

## NOTE!

- If the drain hose is already installed on the machine, then there is no spring clamer and drain hose in the accessories.
- The images in this user manual are for reference only. Your appliance may appear differently.

# Installation

## INSTALLATION INSTRUCTIONS

It's recommended to use the washing machine on its own dedicated power outlet for both convenience and safety. The power outlet must be grounded.

### IMPORTANT!

If the power cord is damaged, it must be replaced by Residentia Group or one of its authorised service representatives. Please contact 1300 11 HELP (4357) and ensure the appliance is completely disconnected from the power supply.

### WARNING!

- Stability is important to prevent the product from moving!
- Make sure that the product should not stand on the power cord.

Before installing the machine, the location must be:

1. Rigid, dry, and a level surface
2. Avoiding direct sunlight
3. Sufficient ventilation
4. Room temperature is above 0 °C
5. Kept far away from the heat resources such as coal or gas.

## UNPACKING THE WASHING MACHINE

### WARNING!

- Packaging material (e.g. Films, Styrofoam) can be dangerous for children.
  - There is a risk of suffocation! Keep all packaging well away from children.
1. Remove the cardboard box and styrofoam packing.
  2. Lift the washing machine and remove the base packing.
  3. Remove the tape securing the power supply cord and drain hose.
  4. Remove the inlet hose from the drum.

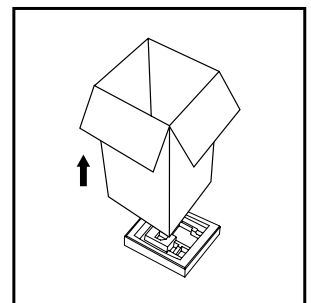
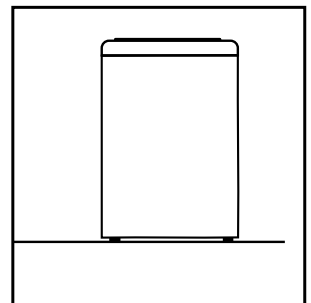
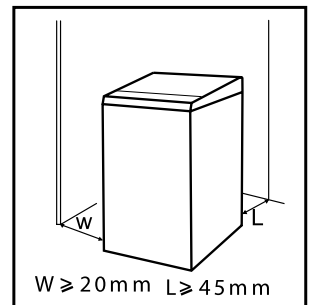
## INSTALLATION OF THE CABINET BASE BOARD (PEST PROTECTION)

The cabinet base board that comes with your machine is an effective barrier to keep mice, rats, and other pests from infestations. Although installation is optional, we highly recommended installing this base board to avoid damage to your machine's electronics.

### WARNING!

The below instructions are advised to be performed by two people.

1. Carefully tilt the washer on a 45° angle
2. Insert the cabinet base board into the fittings located at the base of the washing machine.



# Installation (Continued)

## INSTALLATION OF THE DRAIN HOSE

### NOTE!

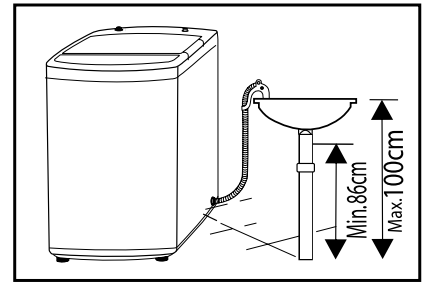
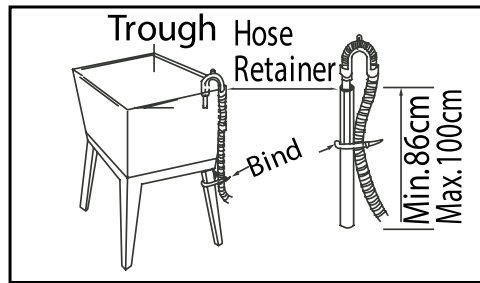
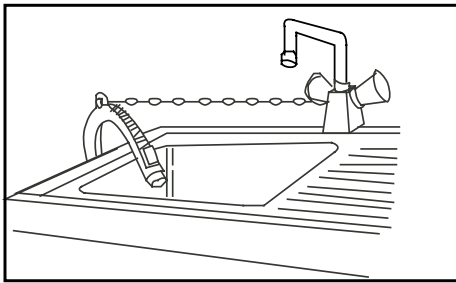
The drain hose of the machine with upper drain system has already been assembled before leaving the factory. The below instructions are suitable for lower drain system.

### WARNING!

To prevent leakage or water damage, follow the instructions in this chapter carefully:

- Do not kink, crush, modify, sever or protract the inlet hose or drain hose.
- Position drain hose properly, otherwise damage might result of water leakage.
- If drain hose is too long, do not force it into washing machine as it will cause abnormal noises.

Use an upper drain system to place the end of drain hose:

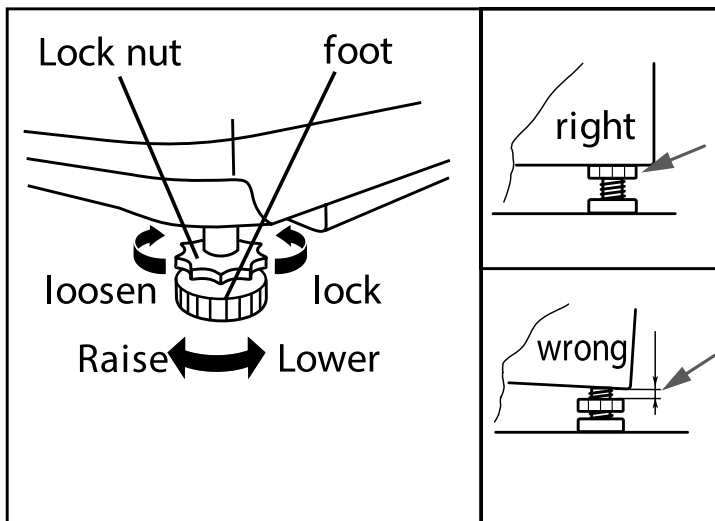


## LEVELLING THE WASHING MACHINE

### WARNING!

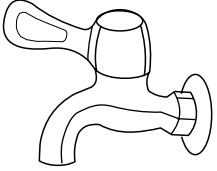
The lock nuts on all four feet must be screwed tightly against the housing.

1. Check if the legs are closely attached to the cabinet. If not, please turn them to their original positions tighten the nuts.
2. Check alignment of the product with a spirit level and if required, correct.
3. Loosen the lock nut and turn the feet until it closely contacts with to the floor.
4. After being locked properly, press four corners again to make sure that they has been adjusted properly.

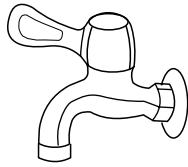


**SELECTION OF TAP**

Please select appropriate tap.



Ordinary faucet



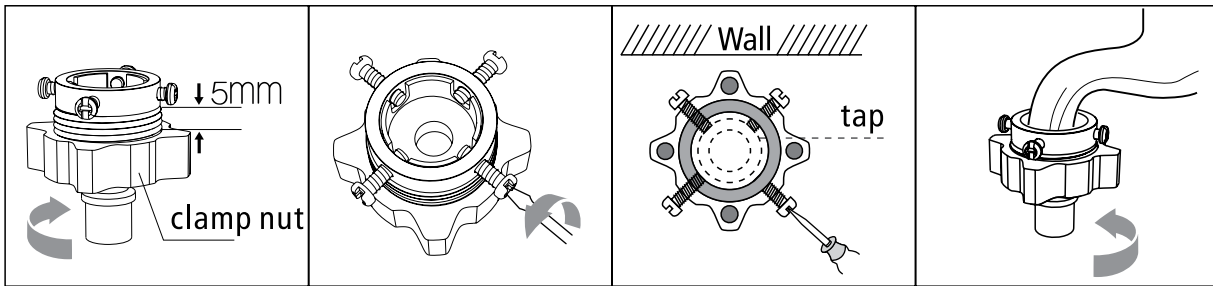
Screw tap



Special washing machine tap

**CONNECTION OF INLET HOSE, TAP AND WASHING MACHINE**

1. Connection between ordinary tap and inlet hose.

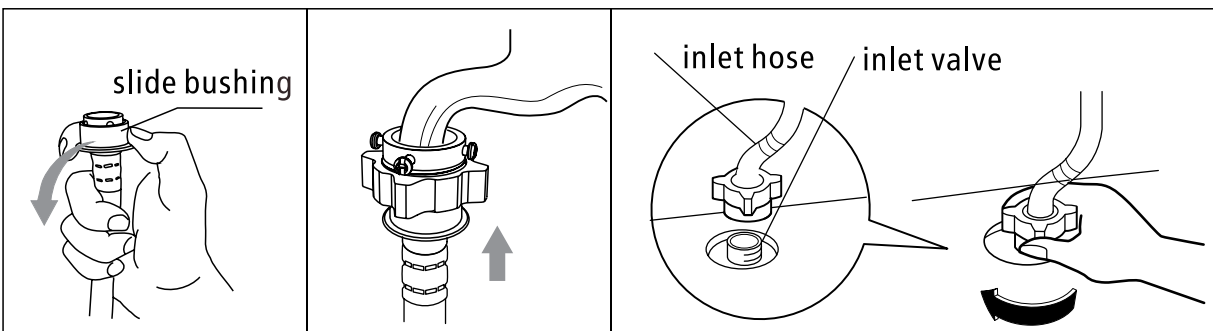


a) Loosen clamp nut to show 5mm thread

b) Loosen four bolts

c) Set connecting base on tap and tighten bolts evenly

d) Tighten clamp nut

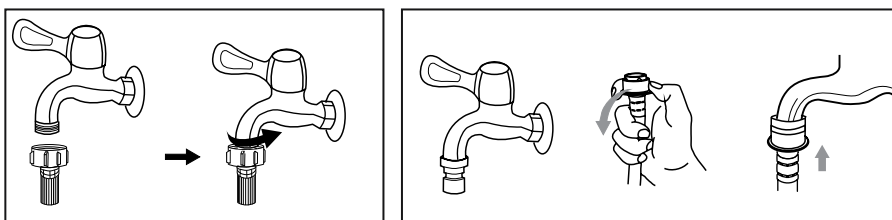


e) Press slide bushing, insert inlet hose into connecting base

f) Connection finished

g) After connection and installation, check if there is water leakage

2. Connection between screw tap and inlet hose.



tap with threads and inlet hose      special tap for washing machine



# Operation Instructions

## FIRST TIME USE

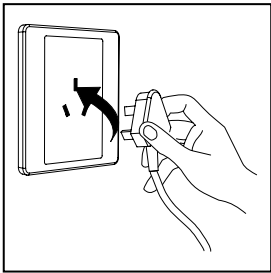
### CAUTION!

Prior to using the washing machine, ensure that it is correctly installed.

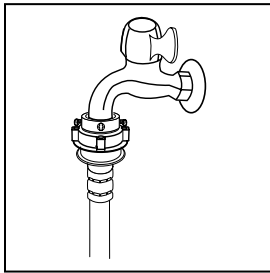
Before first use, the washing machine must perform one cycle without any clothes inside using the following steps:

- Connect the power source and water.
- Insert a small amount of detergent into the detergent drawer and close it.
- Power on the washing machine using the “On/Off” button.
- Turn the Program dial to select any program. ‘Normal’ program is recommended.
- Press the “Start/Pause” button on the appliance.
- Allow the program to complete its full cycle.
- Your machine is now ready for use.

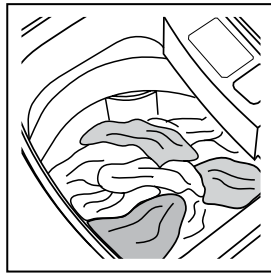
## PREPARATION PROCEDURE FOR WASHING YOUR LAUNDRY



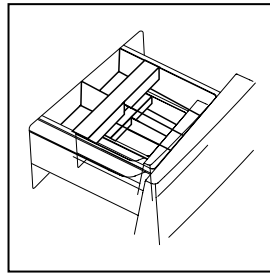
Plug in power



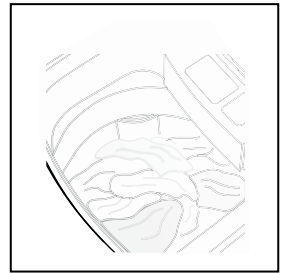
Open tap



Load laundry items

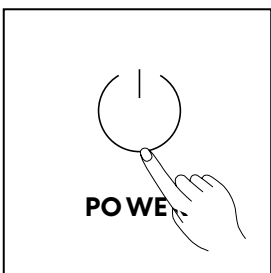


Add detergent

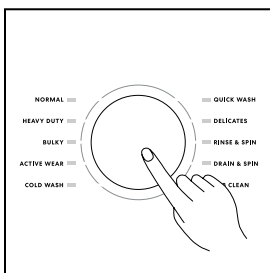


Close lid

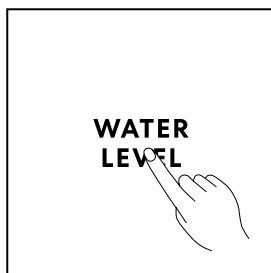
## WASHING STEPS



1) Power On



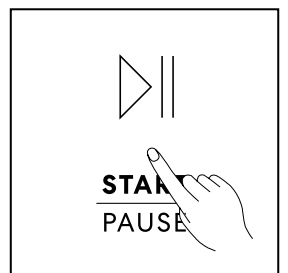
2) Select Program



3) Select Water Level



4) Select Temperature



5) Start up

### NOTE!

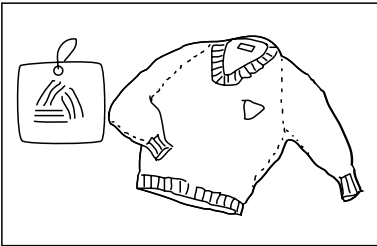
If default is selected, step 3 & 4 can be skipped.

## AFTER WASHING

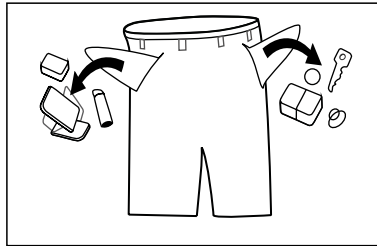
The appliance will sound an alert after washing cycle is complete and the power supply will be powered off automatically. Then unload the laundry.

## WASHING CONSIDERATIONS

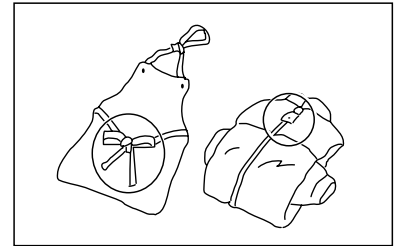
- The working condition of the washer should be (0-40)°C. If used under 0°C, the inlet valve and draining system may be damaged. If the machine is placed under condition of 0°C or less, then it should be transferred to normal ambient temperature to ensure the water supply hose and drain hose are not frozen before use.
- Please check the labels and the explanation of using detergent before wash. Use non-foaming or less-foaming detergent suitable for machine washing properly.



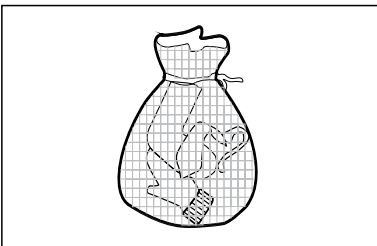
Check the label for washing advice



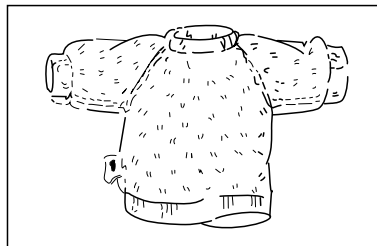
Take items out of the pockets



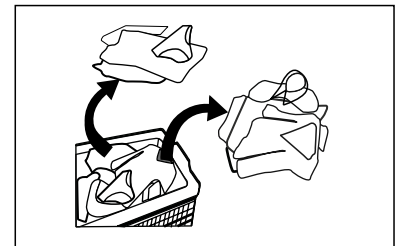
Knot long strings or ribbons, close zippers, and do up buttons



Put small clothes into a wash bag



Turn easy-pilling and long-pile fabric inside out



Separate clothes with different textures

## NOTE!

- This machine features auto-unbalancing detection. Should the machine become unbalanced, it will sound an alert, and you will need to balance clothes in the drum by hand manually.
- When washing a single item, we recommend adding one or two more laundry items to your load to avoid the machine from being unbalanced, allowing for a smooth uninterrupted cycle and a smooth draining process.
- When the lid is opened during machine operation, the alert will sound continuously. If the lid is opened for more than 1 hour, the machine will shut down automatically.
- If there is any break in the power supply whilst the machine is in operation, a special memory stores the selected program when the power is restarted.

## WARNING!

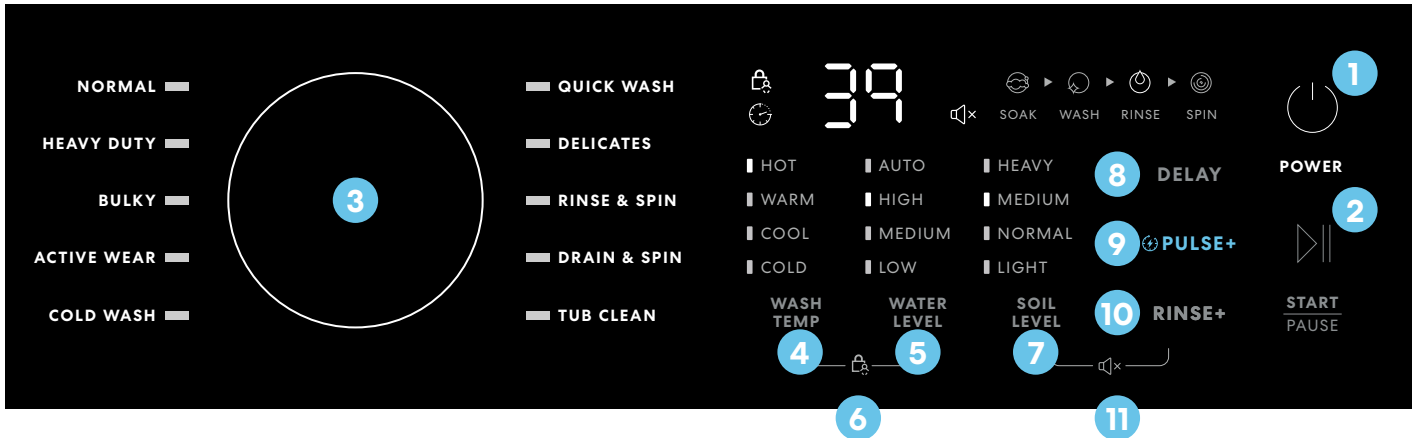
- Do not wash clothes that have come into contact with kerosene, gasoline, alcohol and other flammable materials.

## THE USAGE OF DETERGENT AND WASHING POWDER

- Before machine washing powder or fabric softener is poured into the detergent box, we recommend that you use some water for dilution to prevent the inlet of the detergent box from being blocked and overflowing while filling water.
- Please choose suitable type of detergent for the various washing temperature to get the best washing performance with less water and energy consumption.

# Operating Instructions (Continued)

## THE CONTROL PANEL



### 1. POWER

Press this button to turn your washing machine **On** or **Off**.

### 2. START/PAUSE

After selecting your desired wash settings, press this button to start your wash cycle. You can also use this button to pause the washing machine during operation.

### 3. PROGRAM

Turn the **Program** dial to select your wash program.

### 4. WASHING TEMPERATURE

Press this button to select your desired water temperature. There are four options to choose from **Cold**, **Cool**, **Warm** and **Hot**.

### 5. WATER LEVEL

Select this button to set your water level according to clothing categories, degree of soiling and washing preference. This option is not available for the **Drain & Spin** and **Tub Clean** programs.

### 6. CHILD LOCK

Simultaneously press the **Wash Temperature** and **Water Level buttons** for 3 seconds to activate the child lock. Repeat this process to deactivate the child lock.

The **Child Lock** function will lock all buttons except Power.

### 7. SOIL LEVEL

Select this button based on the amount of soiling of your laundry. There are four levels to choose from **Light**, **Normal**, **Medium** and **Heavy**. This option is not available for the **Rinse & Spin** and **Drain & Spin** programs.

### 8. DELAY

After choosing a program, press the **Delay** button to choose a delayed end time. Press **Start** to commence the delay operation. The end time will be displayed.

To switch the delayed start off, simply press the button until the delay light is off. If there is any break in the power supply while the machine is operating, the memory is stored with your selected program when the power is restarted.

### 9. PULSE+

**Pulse+** can save between 20-40% of your cycle time by strengthening the washing beats.

Press this button to activate and deactivate the **Pulse+** function.

### 10. RINSE+

Select this button to add an additional rinse cycle.

### 11. MUTE

Simultaneously press the **Soil Level** and **Rinse+** buttons to silence button beeps and program sounds. Repeat this process to unmute the washing machine.

### NOTE!

The images in this user manual are for reference only. Your appliance may appear differently.

## WASHING PROGRAMS

### **NORMAL (Standard)**

Standard fabric washing program, suitable to wash cotton fabric.

### **HEAVY DUTY**

The wash time is longer and the stream is stronger for better washing results.

### **BULKY**

Suitable for washing bulky clothing such as jeans.

### **ACTIVE WEAR**

Suitable for washing active wear clothing.

### **COLD WASH**

This cycle uses cold water to get better protection of the clothes and keep the original colour the clothes.

### **QUICK WASH**

Suitable to wash lightly dirty clothes with one rinsing cycle.

### **DELICATES**

Protecting your clothes with a gentle wash program.

### **RINSE & SPIN**

Only the rinse and spin cycle is performed.

### **DRAIN & SPIN**

Only the drain and spin cycle is performed.

### **TUB CLEAN**

It is recommended to run the Tub Clean program monthly to improve the quality of your washing outcome, water quality and drain flow. Tub Clean will target the washing powder residue inside and outside the barrel.

## PERSONALISED WASHING PROGRAM SETTINGS

Users can select washing program according to laundry needs, setting rinsing cycle amounts, water volume and delay time.

An example of a washing cycle process:

1. Turn on the power to the washing machine by pressing the **Power** button.
2. Turn the **Program** dial to choose the Normal washing program.
3. Press the **Water Level** button until Auto is selected.
4. Press the **Washing Temperature** button until Warm is selected.
5. Press the **Pulse+** button to activate the Pulse+ function.
6. Press Start to begin your wash cycle.

# Cleaning & Maintenance

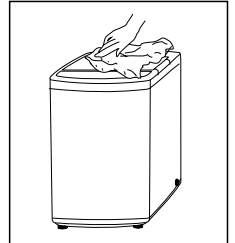
## CLEANING AND CARE

### WARNING!

- Before you begin maintenance, please unplug the machine and close the tap.

### CLEANING THE CABINET

Proper maintenance on the washing machine can extend its working life. The surface can be cleaned with diluted non-abrasive neutral detergents when necessary. If there is any water overflow, use the wet cloth to wipe it off immediately. No sharp items are allowed.



### NOTE!

- Formic acid and its diluted solvents or equivalent are forbidden, such as alcohol, solvents or chemical products, etc.

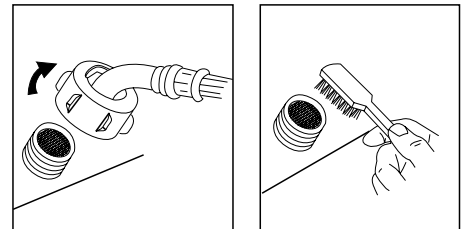
## CLEANING THE INLET FILTER

### NOTE!

- Inlet filter must be cleaned if the water pressure is too low.

Washing the filter in washing machine:

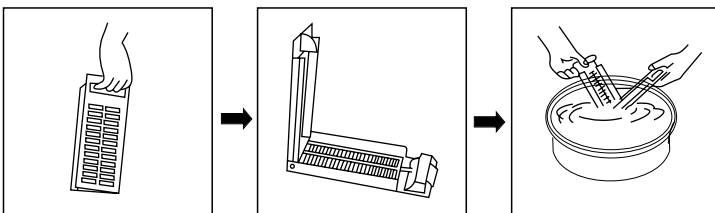
1. Screw off the inlet pipe from the rear of the machine.
2. Pull out the filter with long pliers and reinstall it back after being washed.
3. Use a brush to clean the filter.
4. Reconnect the inlet pipe.



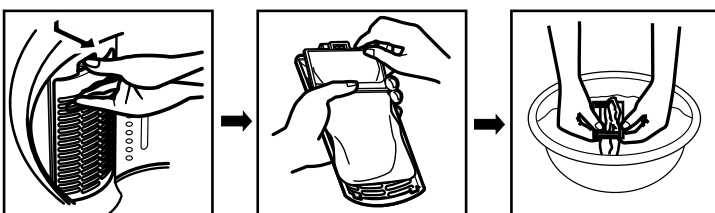
Lint filter clean:

1. There is a built-in lint filter in your washer. It can help to collect lint during washing cycle.
2. It is suggested to clean the lint filter every 10 cycles.
3. Take it out and clean the filter with water. Then place it back into the washer.

### Magic filter



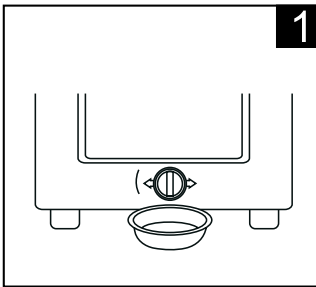
### Normal filter



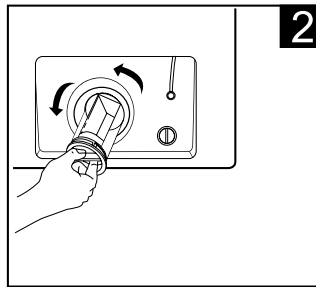
## CLEANING THE DRAIN PUMP FILTER (GGSTLW70RC & GGSTLW90RC MODELS ONLY)

### WARNING!

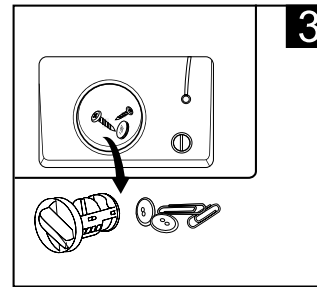
- Be careful of the hot water!
- Allow detergent solution to cool down.
- Drain pump filter can filter the yarns and small foreign matters from the washing.
- Clean the filter periodically to ensure the normal operation of washing machine.
- It is located at the rear of the machine next to the drain hose.
- Unplug the machine to avoid electrical shock before cleaning.



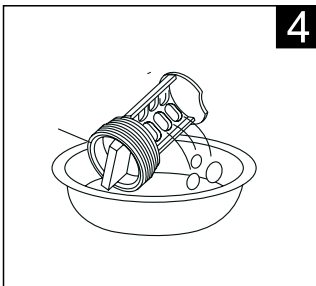
1  
Drain the water out of the pump, using a container to collect



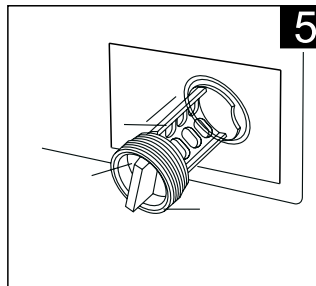
2  
Open the filter by turning to the counter clockwise



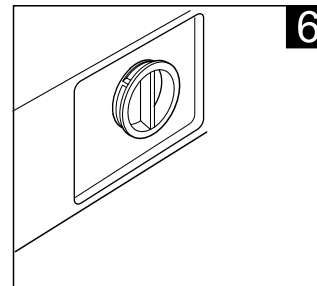
3  
Remove foreign objects



4  
Clean the filter



5  
Restore it and adjust the convex place to align at the pump hole



6  
Tighten the pump cover clockwise

### CAUTION!

- Make sure that valve cap and emergency drain hose are reinstalled properly, cap plates should be inserted aligning to hole plates otherwise water may leak;
- Some machines don't have emergency drain hose, so step 2 and step 3 can be skipped. Rotate lower cover cap directly to make water run into basin.
- When the appliance is in use and depending on the program selected there can be hot water in the pump. Never remove the pump cover during a wash cycle, always wait until the appliance has finished the cycle, and is empty. When replacing the cover, ensure it is securely re-tightened.

# Troubleshooting

## OPERATION IN CASE OF EMERGENCY

In the event of an emergency you should:

- Switch off all controls.
- Switch the washing machine off at the power point or at the fuse box.
- Call the Residentia Support Team on 1300 11 HELP (4357).

Some minor faults can be fixed by referring to the instructions given in the Troubleshooting section below. There is also a self-help section online at <https://support.residentia.com.au/>

DESCRIPTION	INSPECTION ITEMS
No washing	<ul style="list-style-type: none"><li>• If the power is off or the fuse is burned out.</li><li>• If the power supply voltage is too low.</li><li>• If the water amount reaches to the required water level. (The washer will not work if the water amount does not reach the required water level)</li><li>• If it is set to "Delay" washing mode. (It will only start to work until the reservation time reached)</li></ul>
No water flows in	<ul style="list-style-type: none"><li>• If the power is off or the fuse is burned out.</li><li>• If the water supply is cut off or the water pressure too low.</li><li>• If the inlet hose is properly connected and the water tap is opened.</li><li>• If the filtering screen of inlet valve is blocked by dirt.</li><li>• If the coil of inlet valve is damaged. (The slight electromagnetic sound is normal phenomenon when the inlet valve is switched on)</li><li>• If the "Start / Pause" button is pressed after the power switch is pressed.</li></ul>
Abnormal draining	<ul style="list-style-type: none"><li>• If the water drain hose is placed very high.</li><li>• If the end of water drain hose is sealed in pond.</li><li>• If the internal rubber ring of drain valve is blocked by dirt.</li></ul>
Abnormal spin	<ul style="list-style-type: none"><li>• If the door lid is closed.</li><li>• If all clothing piled largely at one side of barrel or the clothing is excessively placed.</li><li>• If the washer is not placed in stable condition or it is placed in inclination state. (The ground is not flat).</li><li>• If the motor belt is loosened.</li></ul>

## NOTE!

- If checking any of the above causes are not easily resolved or you cannot resolve the fault by yourself:
- Turn the washing machine off by pressing the "Power" button.
- Switch off the appliance at the power outlet and remove the plug.
- Call the Residentia Group support team on 1300 11 HELP (4357).

## WARNING!

Never dismantle the washing machine.

## ERROR MESSAGES AND SOLUTIONS

INDICATION	REASON	SOLUTION
"E1" displays	Alarm for abnormal water intake.	Check the water tap is opened or not
"E2" displays	Alarm for water drain has not finished.	Check the water level sensor and drain pump
"E3" displays	Alarm for lid not closed before wash and spin.	Close the lid, Press "Start" button
"E4" displays	Alarm for washing stay at one side.	Manually balance clothes in the barrel by hand.
Other		If problems still occur, please contact the support team.

# Technical Specifications

Below outlines the technical specifications for your Sôlt Washing Machine.

	<b>GGSTLW70RC2</b>	<b>GGSTLW100RCW2</b>
Size	550 × 565 × 1000 (W × D × H mm)	601 × 611 × 1050 (W × D × H mm)
Weight (Gross/Net)	41kg / 37kg	49kg / 45kg
Rated Input Power	450W	600W
Rated Capacity of Wash and Spin	7.0kg (dry clothes)	10.0kg (dry clothes)
Power Supply	220-240V~, 50Hz	220-240V~, 50Hz
Maximum water pressure permitted in the water inlet	0.03MPa	0.03MPa
Minimum water pressure permitted in the water inlet	0.8MPa	0.8MPa
Grade of waterproof	IPX4	IPX4

## ENERGY EFFICIENCY TEST PROGRAM:

### GGSTLW70RC2:

During "Normal" washing program, Wash Temp. is Warm, Water Level is High, Soil Level is Heavy, is recommended for a normally soiled cotton load.

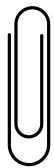
### GGSTLW100RCW2:

During "Normal" washing program, Wash Temp. is Warm, Water Level is High, Soil Level is Heavy, is recommended for a normally soiled cotton load.

## NOTE:

This product is subject to continuous improvement, specification are subject to change without prior notice. This product was tested in accordance with AS/NZS 2040.2 and AS/NZS6400 using program: Standard, which is the program recommended for a normally soiled cotton load at rated capacity.

**Attach your receipt  
to this page**



# Warranty Information

## WARRANTY TERMS & CONDITIONS LAUNDRY APPLIANCES (WASHING MACHINES)

This document sets out the terms and conditions of the product warranties for Residentia Group Appliances. It is an important document. Please keep it with your proof of purchase documents in a safe place for future reference should you require service for your Appliance.

### 1. IN THIS WARRANTY

- (a) 'acceptable quality' as referred to in clause 10 of this warranty has the same meaning referred to in the ACL;
  - (b) 'ACL' means Trade Practices Amendment (Australian Consumer Law) Act (No.2) 2010;
  - (c) 'Appliance' means any Residentia Group product purchased by you accompanied by this document;
  - (d) 'ASR' means Residentia Group authorised service representative;
  - (e) 'Residentia Group' means Residentia Group Pty Ltd of 165 Barkly Ave, Burnley VIC 3121, ACN 600 546 656 in respect of Appliances purchased in Australia;
  - (f) 'major failure' as referred to in clause 10 of this warranty has the same meaning referred to in the ACL and includes a situation when an Appliance cannot be repaired or it is uneconomic for Residentia Group, at its discretion, to repair an Appliance during the Warranty Period;
  - (g) 'Warranty Period' means:
    - (i) where the Appliance is used for personal, domestic or household use (i.e. normal single family use) as set out in the instruction manual, the Appliance is warranted against manufacturing defects for 24 months, following the date of original purchase of the Appliance;
  - (h) 'you' means the purchaser of the Appliance not having purchased the Appliance for re-sale, and 'your' has a corresponding meaning.
2. This warranty only applies to Appliances purchased and used in Australia and is in addition to (and does not exclude, restrict, or modify in any way) any non-excludable statutory warranties in Australia.
  3. During the Warranty Period Residentia Group or its ASR will, at no extra charge if your Appliance is readily accessible for service, without special equipment and subject to these terms and conditions, repair or replace any parts which it considers to be defective. Residentia Group or its ASR may use remanufactured parts to repair your Appliance. You agree that any replaced Appliances or parts become the property of Residentia Group. This warranty does not apply to light globes, batteries, seals, filters or similar perishable parts.
  4. Parts and Appliances not supplied by Residentia Group are not covered by this warranty.

5. You will bear the cost of transportation, travel and delivery of the Appliance to and from Residentia Group or its ASR. If you reside outside of the service area, you will bear the cost of:
  - (a) travel of an authorised representative;
  - (b) transportation and delivery of the Appliance to and from Residentia Group or its ASR, in all instances, unless the Appliance is transported by Residentia Group or its ASR, the Appliance is transported at the owner's cost and risk while in transit to and from Residentia Group or its ASR.
6. Proof of purchase is required before you can make a claim under this warranty.
7. You may not make a claim under this warranty unless the defect claimed is due to faulty or defective parts or workmanship. Residentia Group is not liable in the following situations (which are not exhaustive):
  - (a) the Appliance is damaged by:
    - (i) accident
    - (ii) misuse or abuse, including failure to properly maintain or service
    - (iii) normal wear and tear
    - (iv) power surges, electrical storm damage or incorrect power supply
    - (v) incomplete or improper installation
    - (vi) incorrect, improper or inappropriate operation
    - (vii) insect or vermin infestation
    - (viii) failure to comply with any additional instructions supplied with the Appliance;
  - (b) the Appliance is modified without authority from Residentia Group in writing;
  - (c) the Appliance's serial number or warranty seal has been removed or defaced;
  - (d) the Appliance was serviced or repaired by anyone other than Residentia Group, an authorised repairer or ASR.
8. This warranty, the contract to which it relates and the relationship between you and Residentia Group are governed by the law applicable where the Appliance was purchased.
9. To the extent permitted by law, Residentia Group excludes all warranties and liabilities (other than as contained in this document) including liability for any loss or damage whether direct or indirect arising from your purchase, use or non use of the Appliance.
10. For Appliances and services provided by Residentia Group in Australia, the Appliances come with a guarantee by Residentia Group that cannot be excluded under the Australian Consumer Law. You are entitled to a replacement or refund for a major failure and for compensation for any other reasonably foreseeable loss or damage. You are also entitled to have the Appliance repaired or replaced if the Appliance fails to be of acceptable quality and the failure does not amount to a major failure. The benefits to you given by this warranty are in addition to your other rights and remedies under a law in relation to the Appliances or services to which the warranty relates.
11. At all times during the Warranty Period, Residentia Group shall, at its discretion, determine whether repair, replacement or refund will apply if an Appliance has a valid warranty claim applicable to it.
12. Missing parts are not covered by warranty. Residentia Group reserves the right to assess each request for missing parts in a case by case basis. Any parts that are not reported missing in the first week after purchase will not provide free of charge.
13. To enquire about claiming under this warranty, please follow these steps:
  - (a) carefully check the operating instructions, user manual and the terms of this warranty;
  - (b) have the model and serial number of the Appliance available;
  - (c) have the proof of purchase (e.g. an invoice) available;
  - (d) telephone the numbers shown below.
14. You accept that if you make a warranty claim, Residentia Group and its ASR may exchange information in relation to you to enable Residentia Group to meet its obligations under this warranty.

#### **IMPORTANT**

Before calling for service, please ensure that the steps in point 13 have been followed.

#### Telephone contacts

- Service: Please call 1300 11 HELP (4357)
- Spare Parts: Please call 1300 11 SPARE (7727)

**The Australian Consumer Law requires the inclusion of the following statement with this warranty:**

Our goods come with guarantees that cannot be excluded under the Australian Consumer Law. You are entitled to a replacement or refund for a major failure and for compensation for any other reasonably foreseeable loss or damage. You are also entitled to have the goods repaired or replaced if the goods fail to be of acceptable quality and the failure does not amount to a major failure.

**An initiative by  
Residentia Group**



**T. 1300 11 4357  
E. support@residentiagroup.com.au**

**www.solt.house**



E2447

**SÔLT**

