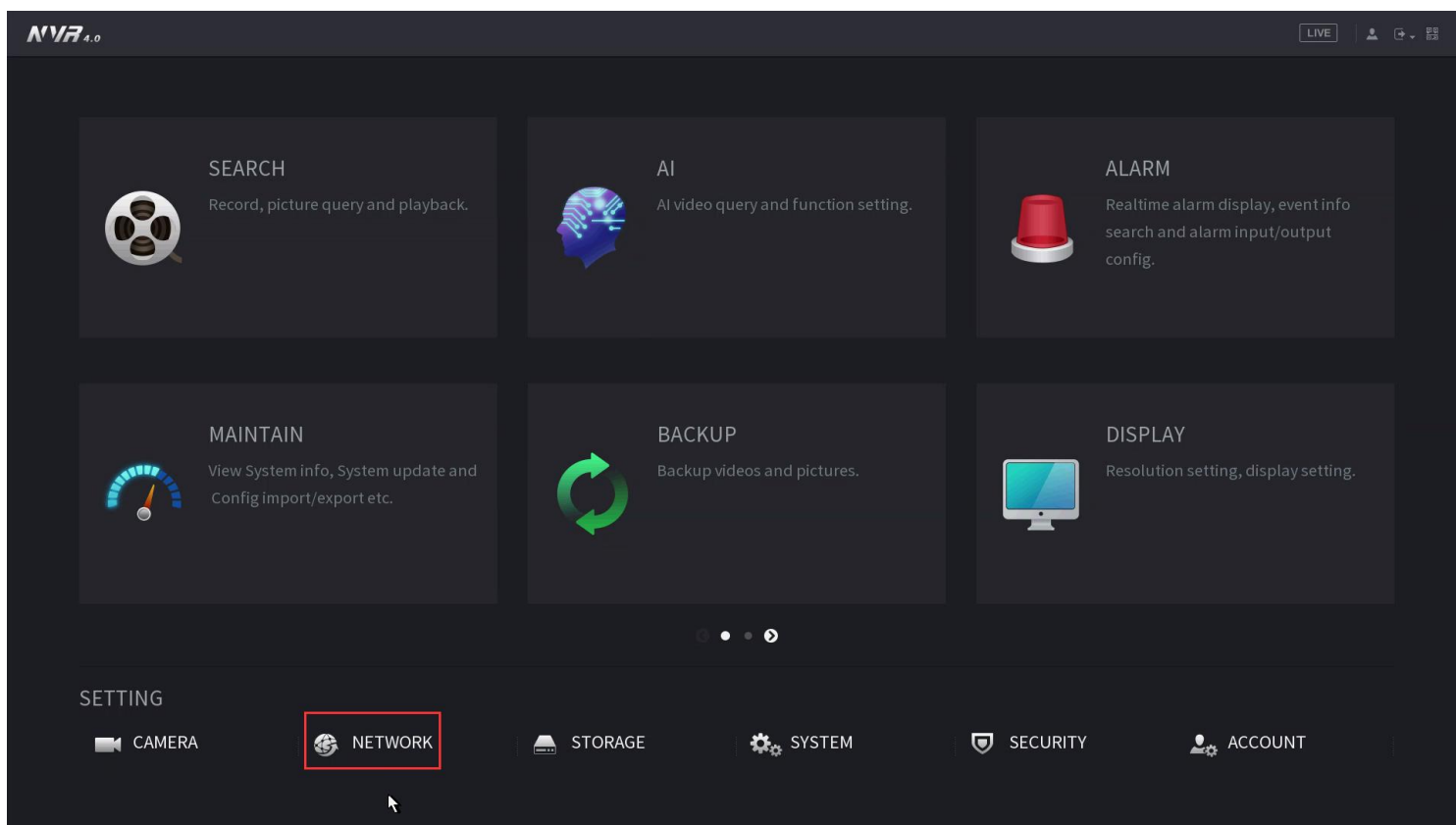
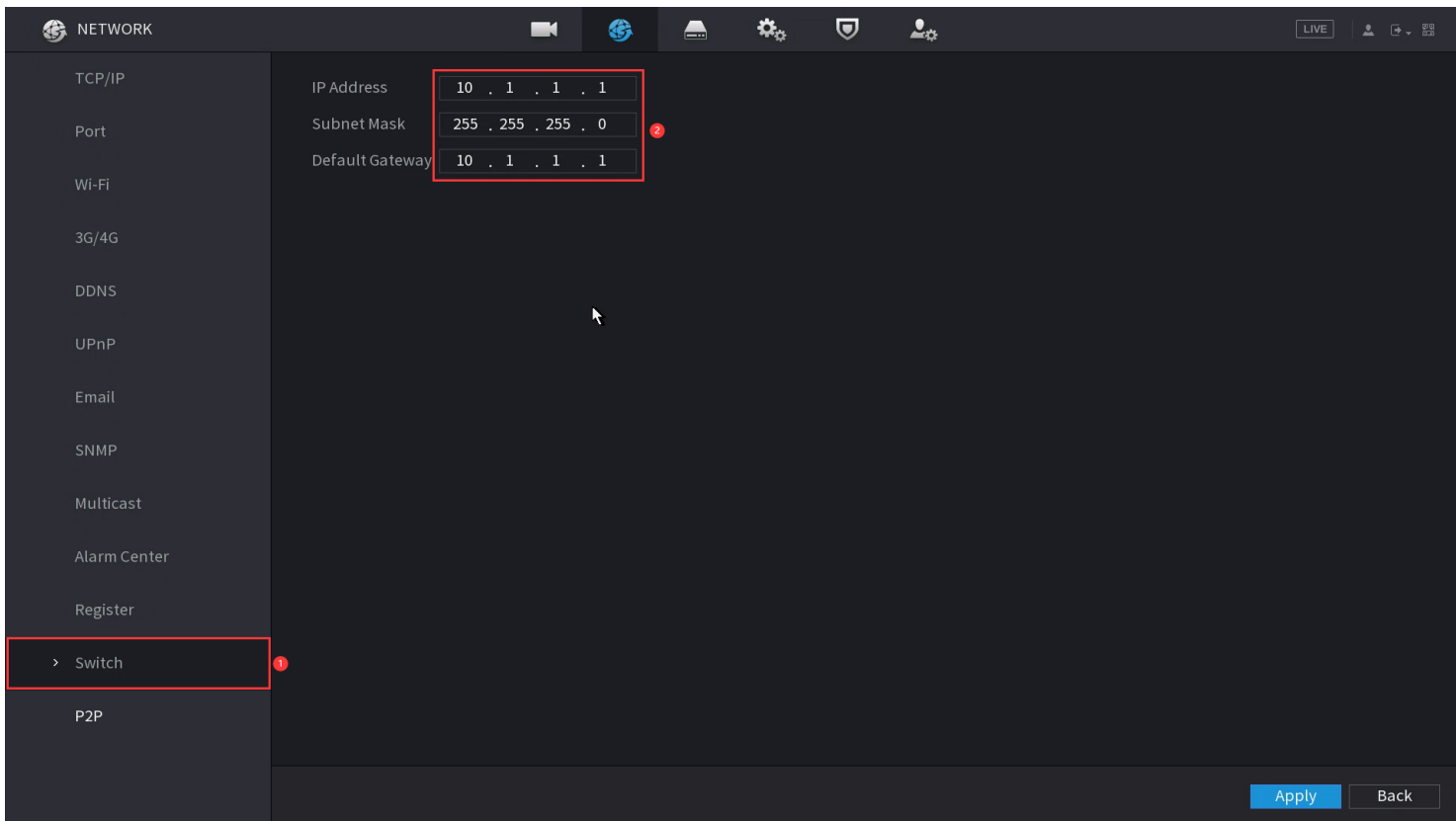


PG camera added to DaHua NVR

1. At first, check the network segment where the SWITCH IP address in the Dahua NVR is located, and enter the main menu—NETWORK—SWITCH. You can see that the NVR network segment is 10.1.1.1





2, Modify the IP network segment of the camera to be the same as that of the NVR (10.1.1.X) X can be any number between 2-254, except the ones occupied by other devices.

After the camera is powered on, connect to the router or directly to the computer, and open the SADP search tool on the computer. Search tool download address:(<https://www.hikvision.com/content/dam/hikvision/tools/hitools/TS20200826033/install-package/SADP.exe>). Change the camera IP (192.168.1.110) to (10.1.1.14), enter the camera password (the default password is 123456) and click to complete the modification..

SADP

Total number of online devices: 1

Unbind Export Refresh Filter

ID	Device Type	Status	IPv4 Address	Port	Enhanced SDK Service Port	Software Version	IPv4 Gateway
001	HK-IPCAM-HI	Active	192.168.1.110	8000	N/A	PG2385I_AF_V0_...	192.168.1.1

Modify Network Parameters

Enable DHCP
 Enable Hik-Connect

Device Serial No.: PG2385I-EF0000000AA668A

IP Address: 10.1.1.14

Port: 8000

Subnet Mask: 255.255.255.0

Gateway: 10.1.1.1

IPv6 Address: ::

IPv6 Gateway: ::

IPv6 Prefix Length: 0

HTTP Port: 80

Security Verification

Administrator Password:

Modify Forgot Password

Annotations: 1 (Refresh), 2 (checkbox), 3 (Subnet Mask), 4 (password), 5 (Forgot Password)

④ default password 123456

SADP

Total number of online devices: 1

Unbind Export Refresh Filter

ID	Device Type	Status	IPv4 Address	Port	Enhanced SDK Service Port	Software Version	IPv4 Gateway
001	HK-IPCAM-HI	Active	10.1.1.14	8000	N/A	PG2385I_AF_V0_...	10.1.1.1

Modify Network Parameters

Enable DHCP
 Enable Hik-Connect

Device Serial No.: PG2385I-EF0000000AA668A

IP Address: 10.1.1.14

Port: 8000

Subnet Mask: 255.255.255.0

Gateway: 10.1.1.1

IPv6 Address: ::

IPv6 Gateway: ::

IPv6 Prefix Length: 0

HTTP Port: 80

Security Verification

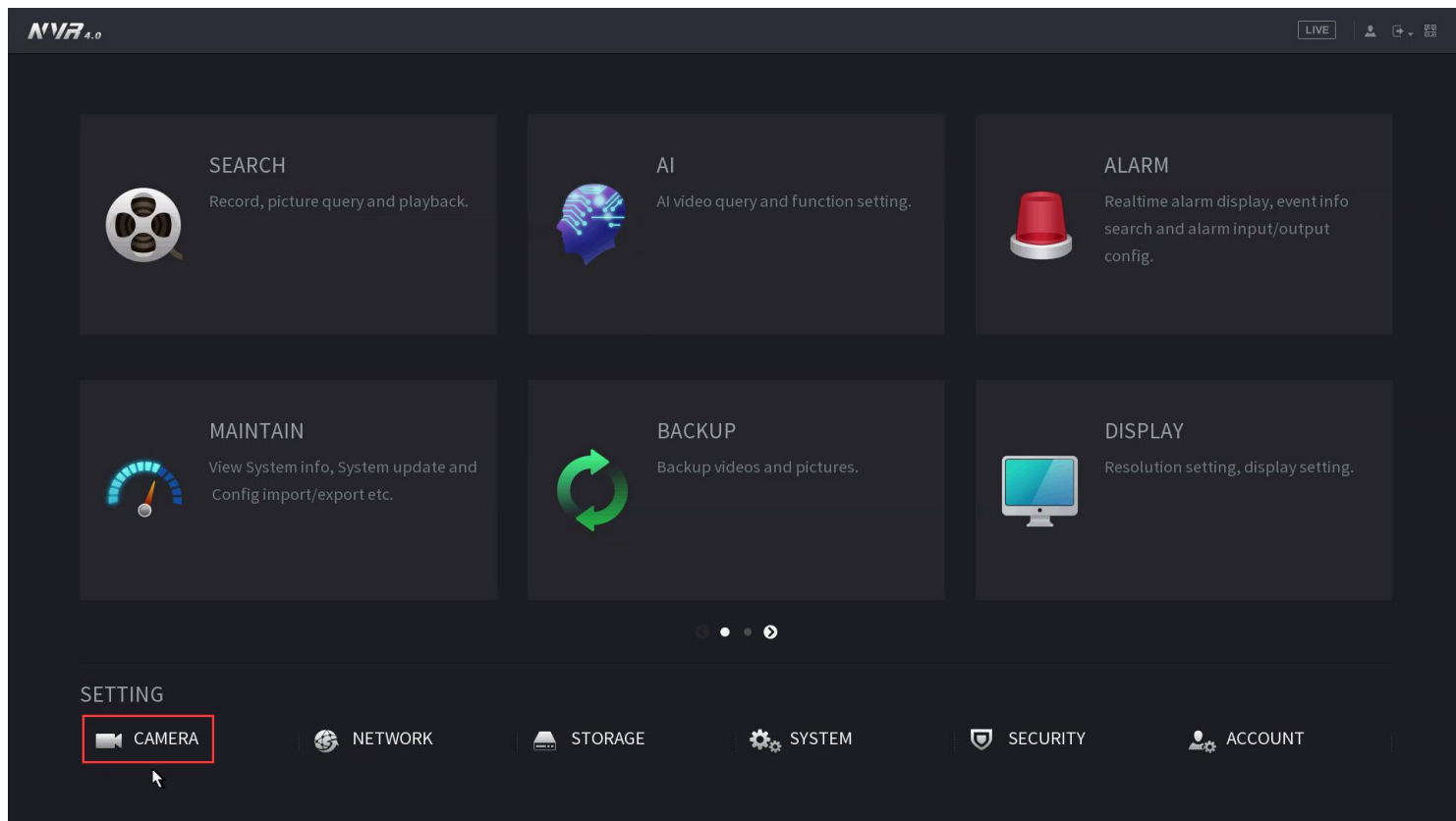
Administrator Password:

Modify Forgot Password

Parameters modification completed.

Annotation: Red arrow points to the updated IPv4 Address (10.1.1.14)

3. After modifying the camera' s IP address, connect the camera to the NVR;
Select the Camera in the main menu.



4. Click Camera List—Search Device—Double-click the searched camera to add it.

The screenshot shows a camera management interface with a dark theme. The top navigation bar includes a 'CAMERA' icon and several status icons. The main content area is divided into tabs: 'Camera List' (selected), 'Device Status', 'Firmware', and 'Update'. On the left, a sidebar lists various camera settings: 'Image', 'Overlay', 'Encode', 'Camera Name', and 'PoE'. The 'Camera List' tab displays a 'Search Device' button (highlighted with a red box), a 'Plug and Play' toggle, and an 'H.265 Auto Switch' toggle. Below these are filter tabs: 'All', 'Not Initialized', and 'Not Auto Connected'. A table lists camera entries with columns for '0', 'Modify IP', 'Live', 'Status', 'IP Address', 'Manufacturer', 'Type', 'MAC Address', 'Port', and 'De'. Below the table are buttons for 'Add', 'Manual Add', 'Modify IP', and 'Change Camera Login Password'. A sub-section titled 'Added Device' and 'Camera Linked Info' contains another table with columns for 'Channel', 'Edit', 'Delete', 'Status', 'IP Address', 'Port', 'Device Name', 'Remote CH No.', and 'Camera Name'. At the bottom, there is a 'Delete' button and a status indicator: 'Remaining Bandwidth/Total Bandwidth: 87.83Mbps/88.00Mbps'. 'Import' and 'Export' buttons are also present.

Search Device Plug and Play H.265 Auto Switch Initialize

All Not Initialized Not Auto Connected Filter

	Modify IP	Live	Status	IP Address	Manufacturer	Type	MAC Address	Port	De
1		LIVE	✓	10.1.1.14	ONVIF	MC800N2		80	M
2		LIVE	✓	10.1.1.14	Private	IPC-IPVM3150F	f0:00:00:aa:66:8a	37777	IP

Add Manual Add Modify IP Change Camera Login Password

Added Device Camera Linked Info

Channel	Edit	Delete	Status	IP Address	Port	Device Name	Remote CH No.	Camera Name
---------	------	--------	--------	------------	------	-------------	---------------	-------------

Delete Import Export

Remaining Bandwidth/Total Bandwidth: 87.99Mbps/88.00Mbps

Search Device Plug and Play H.265 Auto Switch Initialize

All Not Initialized Not Auto Connected Filter

	Modify IP	Live	Status	IP Address	Manufacturer	Type	MAC Address	Port	De
0									

Add Manual Add Modify IP Change Camera Login Password

Added Device Camera Linked Info

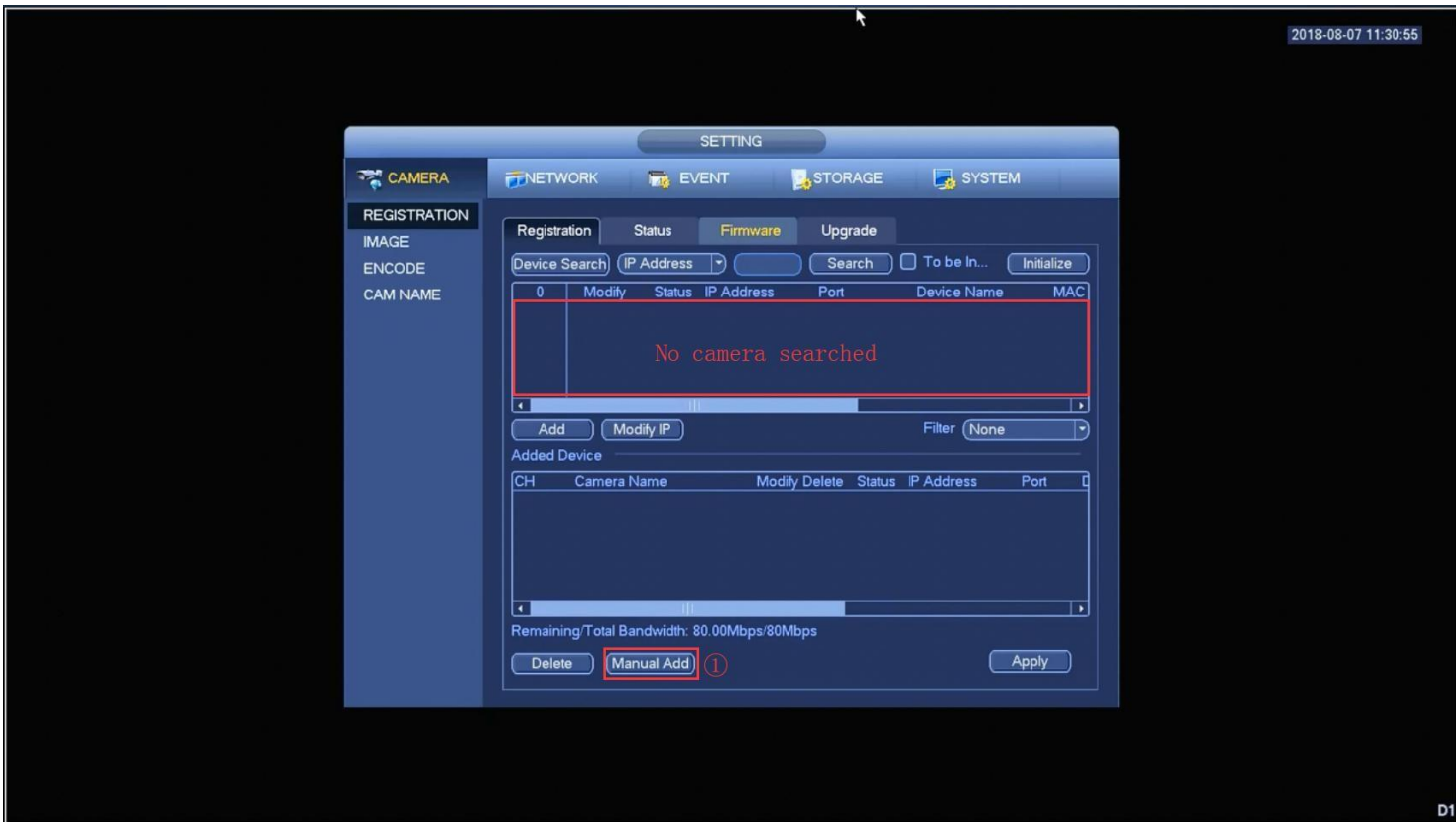
Channel	Edit	Delete	Status	IP Address	Port	Device Name	Remote CH No.	Camera Name
D1			●	10.1.1.14	80	PG2385I_AF	1	Camera

Added successfully

Delete Import Export

Remaining Bandwidth/Total Bandwidth: 87.89Mbps/88.00Mbps

If the camera IP address cannot be searched in the NVR, and the camera is well connected with NVR with the same network segment, then you need to add it manually. Click on 'Manual Add'



- ① Select ONVIF protocol, ② enter camera' IP address, ③ ONVIF port number is 80, ④ enter camera' s password, the default is admin or 123456, ⑤ click 'save' to complete the addition.

