

GorFanty

Multi-Function Steam Mop User Manual

Model: GF-6610/GF-6610B



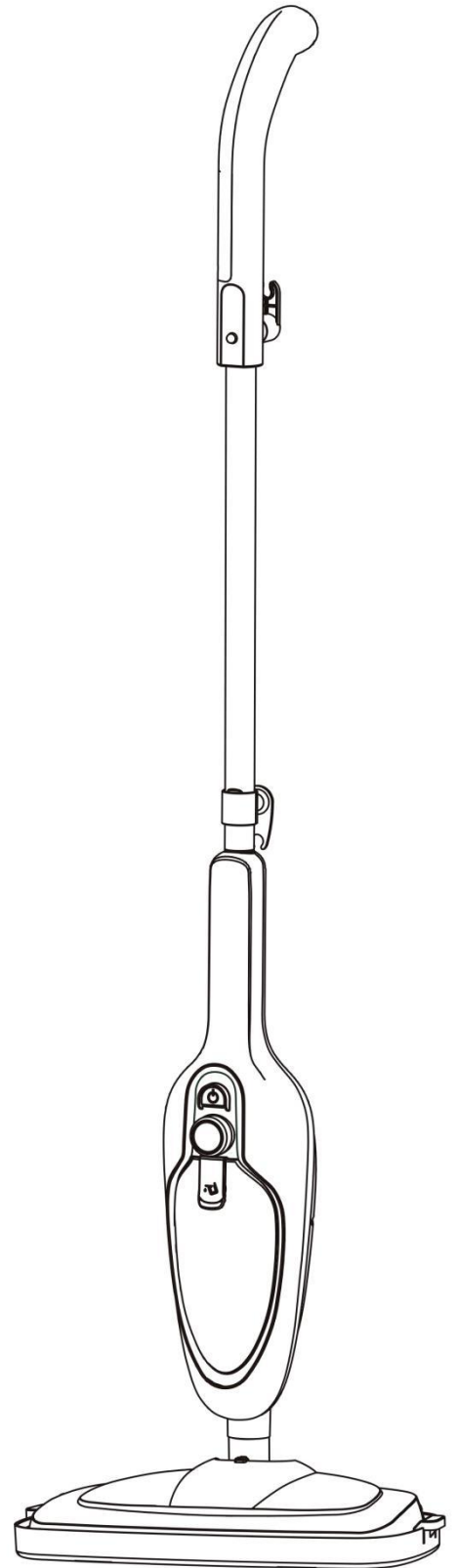
Install Video



Replacement
Accessories

NOTE:

- Please use the pure water in the hard water area.
- Please remove the carpet glider before mopping hard floor.
- Gorfanty steam mops were 100% passed quality test before shipping from factory. Some pure water may residue after the test.



Any problem & warranty registration please contact
service@gorfanty.net

ANY QUESTIONS OR PROBLEM?

Please contact us at Email: service@gorfanty.net along with your:

1. Order Number (for better service tracking);
2. Your problem or question (better with pictures or videos).

2 YEAR LIMITED WARRANTY-LEGAL

GorFanty warrants to the original purchaser only, that all GorFanty products will provided **2** years warranty from date of purchase, if original purchaser registers the product within 30 days from purchasing.

Product registration can be completed online by scanning the below **QR-code** OR contact GorFanty service center service@gorfanty.net (email with order ID). Original purchasers should also retain their receipt as proof of purchase.



Warranty Registration

THE 2-YEAR WARRANTY PERIOD IS CONDITIONED ON REGISTRATION OF THE PRODUCT WITHIN 30 DAYS OF PURCHASE.

If original purchasers do not register their product timely, the foregoing limited warranty will apply for a duration of 1 year.

- This warranty does not cover part failure due to normal wear or tool abuse.
- This warranty does not apply to accessories or damage caused where repairs have been made or attempted by others.
- THIS LIMITED WARRANTY DOES NOT APPLY TO ACCESSORY ITEMS SUCH AS MOP PAD AND OTHER RELATED ITEMS. ANY IMPLIED WARRANTIES APPLICABLE TO A PRODUCT SHALL BE LIMITED IN DURATION EQUAL TO THE DURATION OF THE EXPRESS WARRANTIES APPLICABLE.

TABLE OF CONTENT

| | |
|---|----|
| WARRANTY | 1 |
| GENERAL SAFETY INSTRUCTIONS | 3 |
| SAFE OPERATION | 4 |
| PRODUCT DIAGRAM | 6 |
| ASSEMBLING THE STEAM MOP | 7 |
| ASSEMBLING THE HANDHELD STEAM CLEANER | 9 |
| ACCESSORIES KIT | 10 |
| USING THE STEAM MOP/CLEANER | 11 |
| CLEANING AND STORAGE | 13 |
| TECHNICAL SPECIFICATIONS | 13 |
| TROUBLE SHOOTING GUIDE | 14 |
| FREQUENTLY QUESTION & ANSWER | 15 |
| CONTACT US | 15 |

GENERAL SAFETY INSTRUCTIONS

Read this manual thoroughly before first use, even if you are familiar with this type of product.



To reduce the risk of fire, injury or electrical shock along with extending the life of your appliance, please read and follow all of the information in this manual before using and save it for future reference.

Always follow basic safety precautions and accident prevention measures when using an electrical appliance, including the following:

- ① Before turning on the steam mop, ensure your electrical voltage and circuit frequency correspond to those indicated on the appliance rating label.
- ② To provide continued protection against the risk of electric shock, connect the appliance to a properly grounded electrical outlet only. Never force the plug into an outlet.
- ③ Do not use an extension cord or electrical outlet with inadequate current-carrying capacity.
- ④ To reduce the risk of electrocution, never operate this product with wet hands or without shoes. Never immerse it under water or spill liquids into the product.
- ⑤ Protect the power cord. Do not kink or damage the power cord. Do not pull or carry the steam mop by the cord. Do not use the cord as a handle, close a door on the cord, or pull the cord around sharp edges or corners. Keep the cord away from heated surfaces.
- ⑥ If the supply cord or plug is damaged, do not use the appliance. A damaged cord or plug must be replaced by the manufacturer, its service agent or appropriately qualified personnel in order to avoid a hazard.
- ⑦ Do not leave the appliance unattended while connected to the power supply.
- ⑧ Turn off the switch and unplug the electrical cord when not in use and before servicing. To unplug, grasp the plug, not the cord.
- ⑨ This steam mop is intended for household use only. Do not use it for anything other than its intended purpose, and only use it as described in this manual.
- ⑩ Only use the steam mop with the accessories supplied with the product.
- ⑪ Improper assembly or use may result in the risk of fire, electric shock and/or injury to persons.

⑫ We assume no liability for any eventual damages due to improper use or incorrect handling.

⑬ This appliance is not intended for use by persons (including children) with reduced physical, sensory or mental capabilities, or lack of experience and knowledge, unless they have been given supervision or instruction concerning use of the appliance by a person responsible for their safety.

⑭ Supervise young children to ensure they do not play with the appliance.

Do not allow the steam mop to be used as a toy.

⑮ Close attention is necessary when this appliance is used near children, pets or plants.

⑯ Do not use the steam mop outdoors.

SAFE OPERATION



Always follow basic safety precautions when using any electrical products, especially when children are present.



WARNING: DANGER OF SCALDING!

Beware of steam when operating the unit. The steam is hot and may cause severe burns if it comes in contact with bare skin.

Never run the steam mop without water.

Never direct steam at any person or animal.

FOR HOUSEHOLD USE ONLY

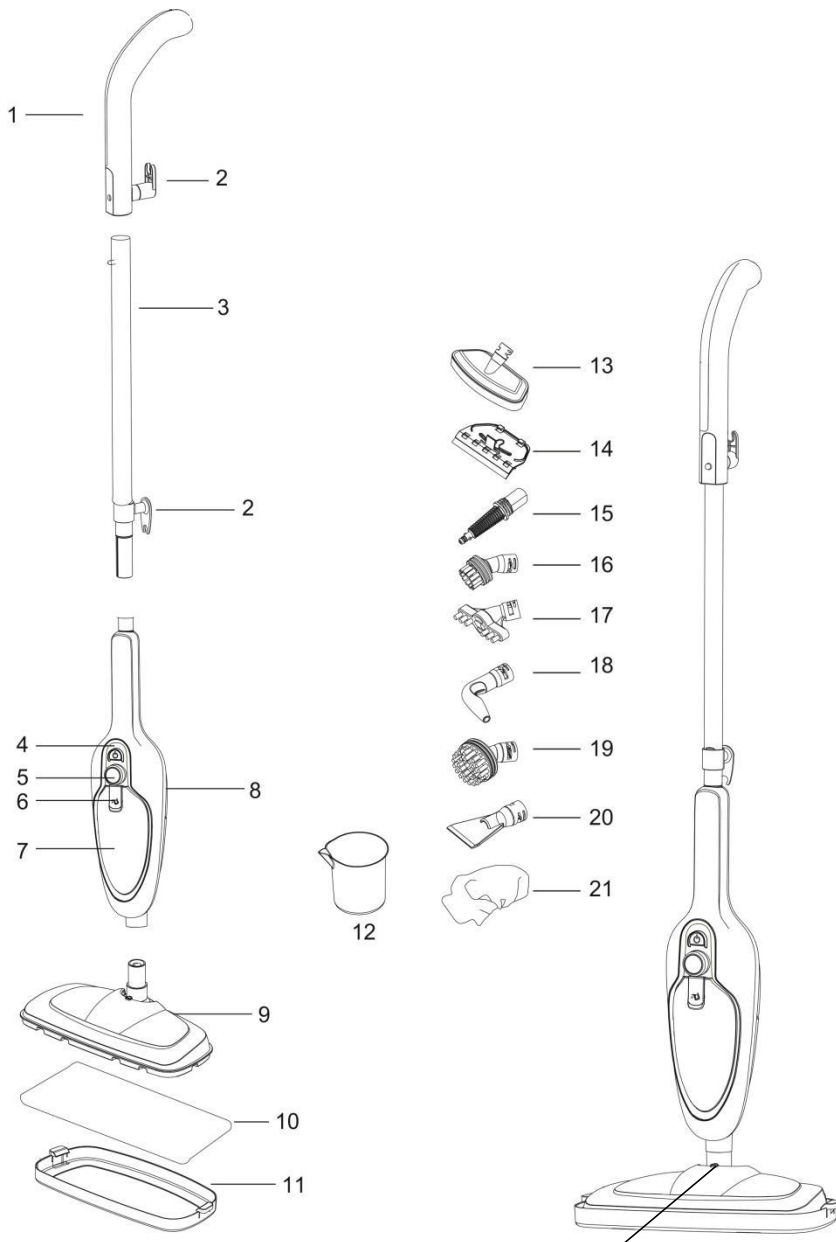
SAVE INSTRUCTIONS FOR FUTURE REFERENCE

WARNING:

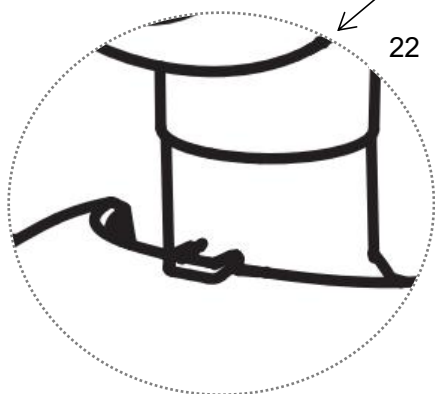
**Do not use any detergents in the water tank for cleaning, only use water.
[Please use distilled or purified water in hard water area.]**

- ① Ensure that all the parts are correctly assembled before operation.
- ② Do not use the steam mop without the floor cloth in place.
- ③ Do not use it without water in the water tank.
- ④ Place the appliance on a flat surface when operating to avoid overturning.
- ⑤ Do not insert any objects into openings. Do not use with any opening blocked.
- ⑥ Never block the steam openings or place the product on a soft surface, where the steam openings may be blocked. Keep the steam openings free of lint, hair
- ⑦ Using detergents in the water tank is unsafe and will damage the unit.
- ⑧ Never direct steam towards people, animals or plants, or equipment containing electrical components.
- ⑨ Use extra caution when using the steam mop on stairs.
- ⑩ Keep your work area well lit.
- ⑪ Store your steam mop indoors in a cool, dry area out of children's reach.
- ⑫ The unit has no user-serviceable parts contained within. Do not attempt to repair, disassemble or modify the appliance.

PRODUCT DIAGRAM

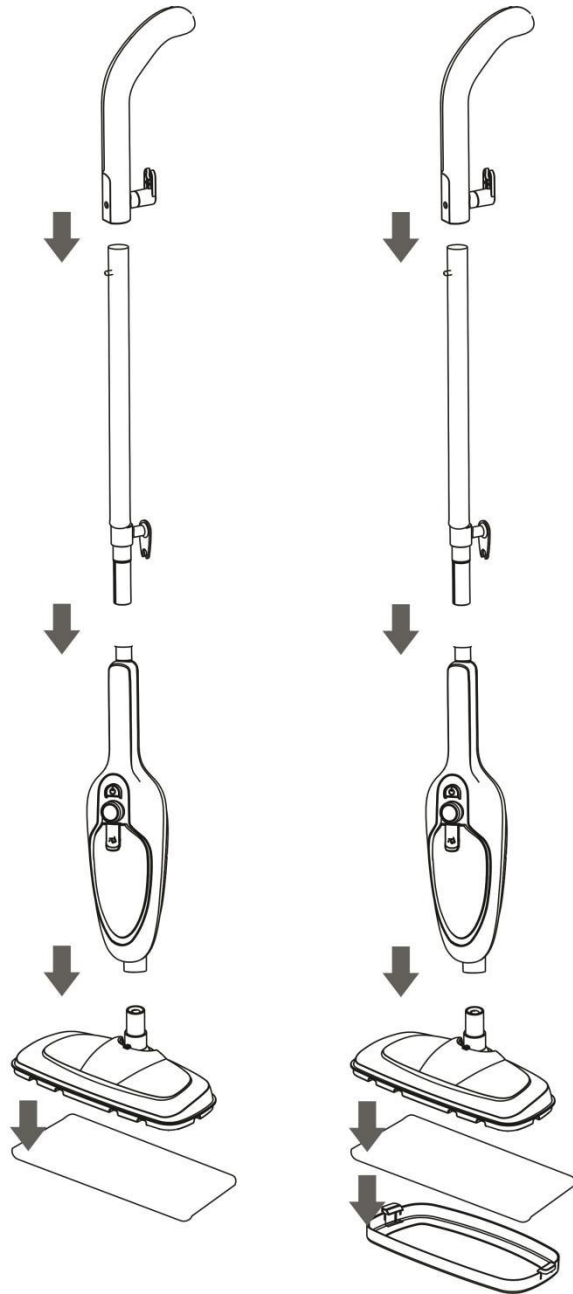


- 1. Handle
- 2. Cord Wrap Hook
- 3. Metal Tube
- 4. Power Switch
- 5. Steam Adjustment Knob
- 6. Water Tank Cap
- 7. Water Tank
- 8. Main Body
- 9. Mop Head
- 10. Mop Pad
- 11. Carpet Glider
- 12. Measuring Cup
- 13. Ironing Brush
- 14. Window Cleaning Tool
- 15. Adaptor
- 16. Round Brush
- 17. Flat Brush
- 18. Angle Nozzle
- 19. Large Round Brush
- 20. Scraping Tool
- 21. Small Cloth
- 22. Self Stand Buckle



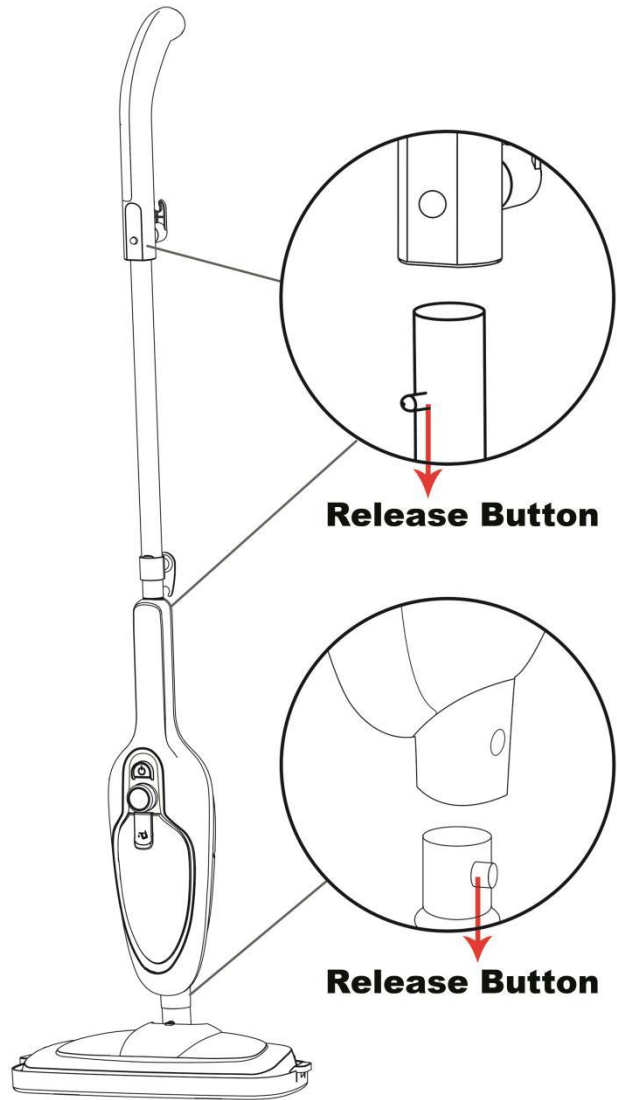
ASSEMBLING THE STEAM MOP

- 1) Before assembling the steam mop ,please make sure the power switch is in the “OFF” position
- 2) Connect the part as shown below:



Clean Hard Floor

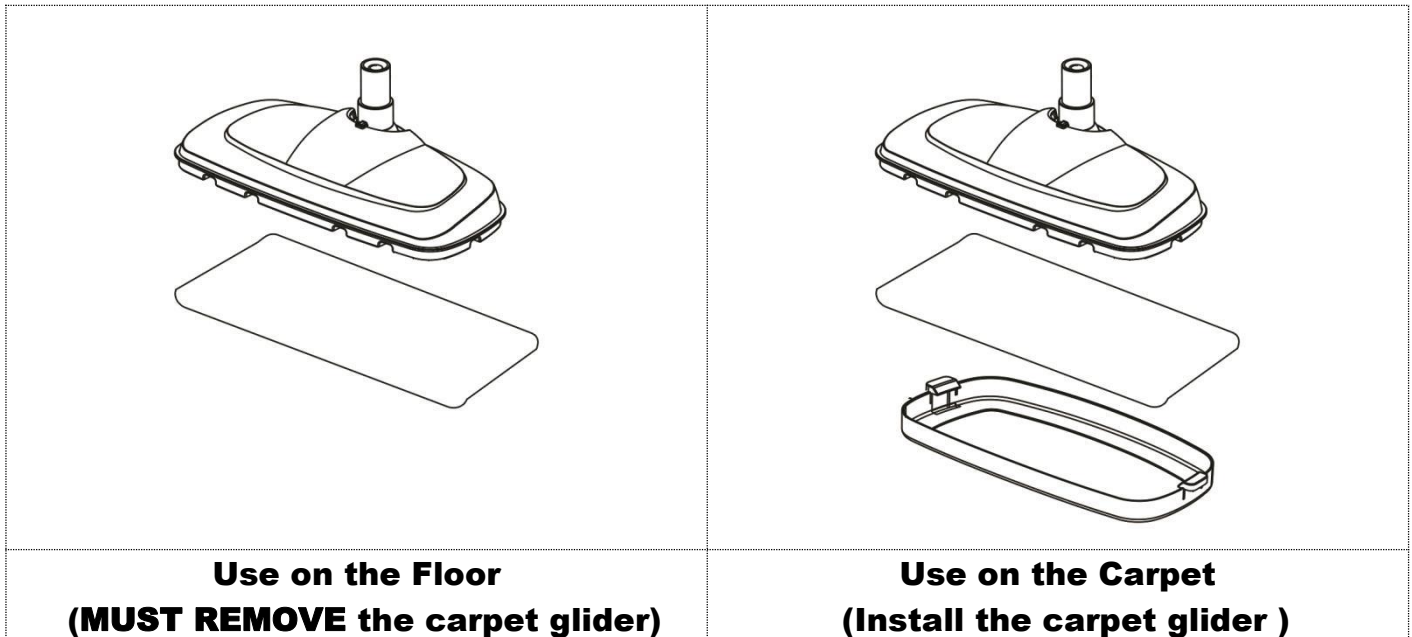
Clean Carpet



Release Button

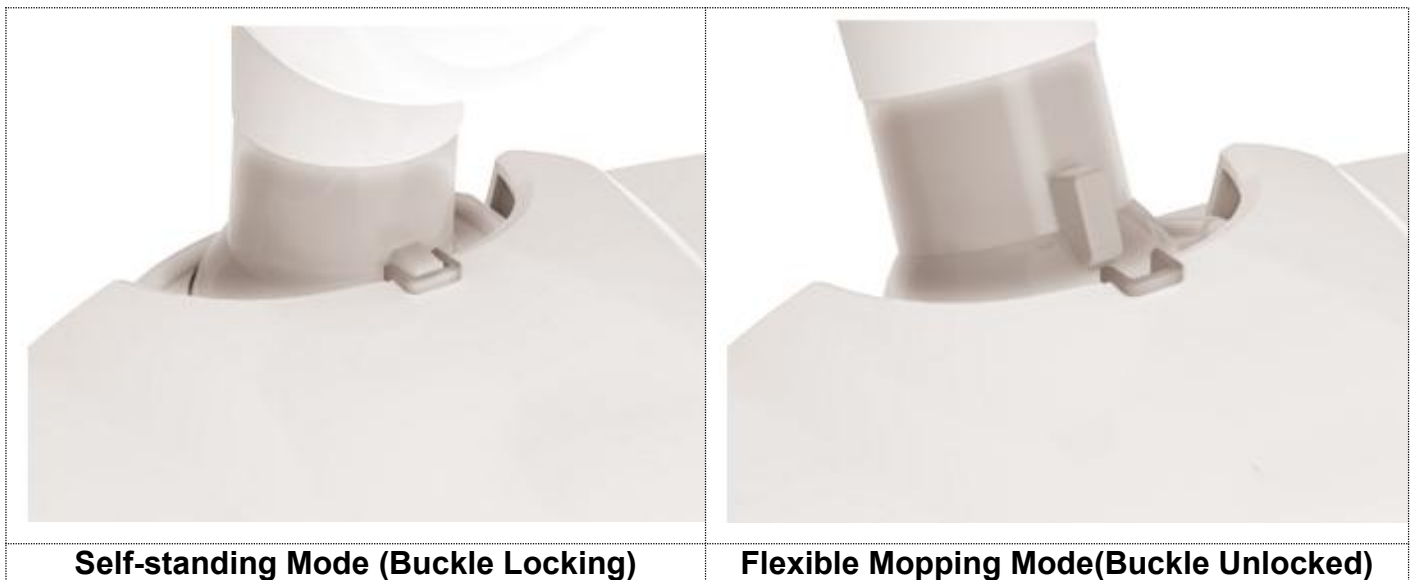
Release Button

3) Fit the mop pad over the mop head as shown below:

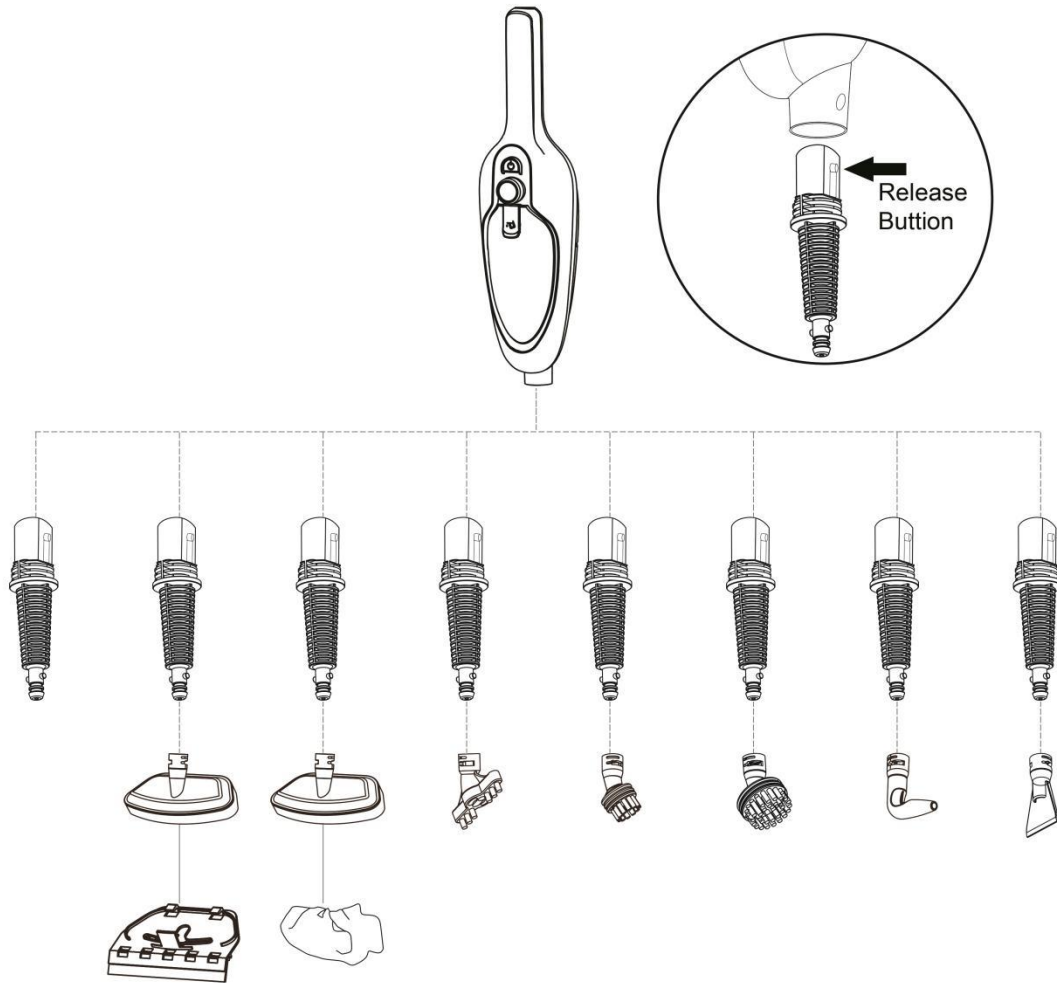


4) Switch the self-stand mode to flexible mopping mode

Holding the mop head and pull the main body back, so that the locking buckle will be detached, and the mop head will be flexible rotating to mop.



ASSEMBLING THE HANDHELD STEAM CLEANER

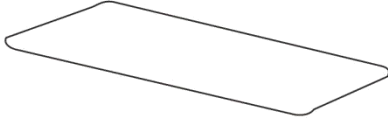
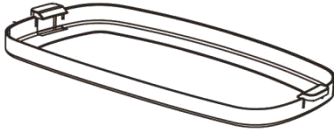





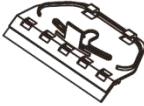





- 1) Before assembling the steam mop ,please make sure the power switch is in the “OFF” position
- 2) Remove the handle from the main body
- 3) Choose the appropriate accessory as shown in the Accessories List. Connect the accessory with the adaptor by inserting the tip of adaptor into the opening of the accessory and turning the adaptor clockwise to lock into place.
- 4) Align the Release Button on the accessory adaptor with the opening on the main body and insert the adaptor into the opening on the main body.

NOTE:

- To remove accessory adaptor from the main body,press Release Button on the accessory adaptor.
- When using the window cleaning tool, ironing brush is used to link the adaptor with it.

ACCESSORIES KIT

| Accessory | Picture | Suggested Use |
|----------------------|---|---|
| Mop Pad |  | For general cleaning of hard floors/marbles/refreshing carpets. |
| Carpet Glider |  | For cleaning carpets. |
| Accessory Adaptor |  | For connecting other accessories with the main body, and for cleaning areas that are hard to reach, such as sink, gas stove, faucet, microwave oven, range hood, etc. |
| Angle Nozzle |  | For cleaning areas that are hard to reach, such as sink, gas stove, faucet, microwave oven, range hood, edge, corner etc. |
| Round Brush |  | For cleaning ovens, microwaves, showers, bathtubs, faucet fixtures, tiles, toys, refrigerators, etc. |
| Flat Brush |  | For cleaning ovens, microwaves, showers, bathtubs, faucet fixtures, tiles, toys, refrigerators, etc. |
| Ironing Brush |  | For cleaning shower glass, doors, mirrors, glass; removing scum, grime; ironing garment, etc. |
| Window Cleaning Tool |  | For cleaning shower glass, doors, mirrors glass, etc. |
| Small Cloth |  | For garment cleaning or soft surface cleaning etc. |
| Scraping Tool |  | For scraping grease, residue or other substances from surfaces such as stove tops and ovens. |
| Large Round Brush |  | For cleaning ovens, microwaves, showers, bathtubs, faucet fixtures, tiles, toys, refrigerators, etc. |

USING THE STEAM MOP/CLEANER

The easy, environmentally friendly way to clean your floors

- **NO CHEMICALS**

Thoroughly cleans and sanitizes floor surfaces without any chemicals.

- **NO ELBOW GREASE**

Easily removes dirt and grime from hard floors or carpets, leaving them hygienically clean without the need for hard physical labour.

- **TAP WATER ONLY**

Designed for use with plain tap water that is converted into steam. [Distilled or purified water is recommended for use in hard water areas.]

- **REUSABLE CLOTH**

Comes with two reusable, highly absorbent microfibre cloths that can be machine-washed in hot water and tumble dried.

- **USE ON MOST HARD FLOOR**

Designed for use on hard surfaces that can withstand high heat, including ceramic tiles, marble, stone or linoleum floors and on sealed hardwood or parquetry floor [see "CAUTION!" note below].

- **USE ON CARPET AND RUGS**

Designed for use with the supplied carpet glider on carpet and rugs that can withstand high heat.

CAUTION!

- **Do not** use the steam mop on unsealed wood floors.
- **Do not** let the steam mop stand on any wood floor for an extended period of time. This can cause the wood grain to expand. Test on an isolated area of the surface before proceeding.
- **Take extra care** when using the steam mop on surfaces that have been treated with wax, as the heat and steam may remove the wax or sheen.
- **Take extra care** when using the steam mop on vinyl, linoleum or any other heat-sensitive floor, as too much heat can melt the glue on the floor. We recommend cleaning a small sample in an inconspicuous area of the floor first and checking the manufacturer's use and care instructions for the surface to ensure its suitability for steam cleaning.

WARNING: DANGER OF SCALDING!

Never run the steam mop without water. Never point the steam directly at any person or animal!

NOTES:

Before you start steam cleaning your floor, make sure:

- The surfaces that you want to steam clean have been swept or vacuumed.
- The steam mop is fully assembled.
- The microfibre cloth sits tightly around the steam head. [Do not use the mop without the microfibre cloth!]
- The water tank is filled. [Do not add cleaning solutions, only use tap water, or distilled/purified water.]

Start using the steam mop/cleaner:

1. Plug into electrical outlet suitable for the appliance, ensure the AC outlet and the product rating label voltage are compatible.
2. Turn on the power switch power indicator light; the unit starts heating up. It takes approximately 20-30 seconds for the unit to heat up and the steam to be ready.
3. Push the unit forward and backward along the floor.
4. When the water level in the water tank is low, the power switch must be turned off immediately. Unplug the unit from the electrical outlet and refill the water tank by following the instructions.
5. If you use the steam mop for a long time, the cloth sleeve may become very wet or dirty. It will need to be replaced. Turn off the unit & allow it to cool before replacing. While replacing the cloth sleeve, don't touch the steam head to avoid scalding.
6. To sanitize a specific area of your floor, position the steam mop over the area for a minimum of 8 seconds, but no longer than 15 seconds. The steam temperature will reach approximately 194°F - 230°F (90°C - 110°C). This is particularly useful for cleaning the bathroom, shower, pet sleeping area or around garbage bins.

CLEANING AND STORAGE

- Always switch off the appliance, disconnect the appliance from the power source, and let it cool thoroughly before cleaning.
- Wipe the exterior of the appliance with damp cloth.
- The accessories can be washed in water with mild detergent.
- Never immerse the appliance in water or any other liquids.
- Never use abrasive cleansers, scouring pads, metal brushes, as they may damage the surface.
- Ensure the appliance is completely cool and dry before storage.
- Do not wrap the cord around the appliance, as this will damage the cord.
- Keep the appliance in a cool, dry place.

TECHNICAL SPECIFICATIONS

| | |
|------------------------------------|-----------------|
| Model | GF6610/GF6610B |
| Rated Voltage | 110-120V 60Hz |
| Water Tank Capacity | 300 ml/10 fl oz |
| Steam Generation Delay Time | 20-30 seconds |
| Rated Power | 1100-1200W |

TROUBLE SHOOTING GUIDE

| Problem | Reason | Solution |
|--|---|--|
| Can Not Turn On | Doesn't plugged in /Poor connection | 1.Unplug and then plug it again. 2.Plug the product beside the socket |
| | ⏻ Power switch not turn on | Press the power button ⏻ to ON status |
| | Product Damage | Stop Using & Contact customer service (service@gorfanty.net) |
| Can Not Turn Off | Switch isn't turn off | Switch off the machine |
| | Product Damage | Stop Using & Contact customer service (service@gorfanty.net) |
| Reduced steam / No Steam | ⏻ Power switch not turn on | Press the power button ⏻ to ON status |
| | Out of water | Turn off the cleaner and refill the water tank. |
| | Low steam setting | Adjust the steam level to a higher setting |
| | Gravity ball straw does not touch the water | Shake the main body & move the gravity ball into water. |
| | Plug was pulled out /Poor Connection | Unplug and then plug it again. |
| | Steam generation need 20sec | Please wait as least 20sec for the water to heat up & the power light to turn green |
| | Have used chemical cleaner or water with high hardness. | Stop Using & Contact customer service (service@gorfanty.net) |
| Can Not be detached | Didn't press the release buttons | Press the release buttons & pull out the accessory at the same time. |
| Stop working | Short Out Protection Running with NO water | Turn off the cleaner and refill the water tank. |
| | Plug was pulled out /Poor Connection | Unplug and then plug it again. |
| | Product Damage | Stop Using & Contact customer service (service@gorfanty.net) |
| Can Not clean the floor as well | Carpet glider did not remove & the mop pad did not reach the floor. | Remove the carpet glider for hard floor mopping. |
| Hard to swivel the mop head | Did not unlock the self stand buckle of the mop head | Unlock the self stand buckle following page 8. |
| Water leaking | Loosen tank cap | Turn off the cleaner and turn the tank cap tightly. |
| | The mop head did not connect with the machine body properly. | Please remove the mop head and install it back correctly. |
| | Product Damage | Stop Using & Contact customer service (service@gorfanty.net) |
| Hard to use on the carpet | Carpet glider not buckled | Make sure the carpet glider has been buckled on the floor head. |
| There is a puddle of water / The mop pad is not picking up dirt | The mop pad is saturated and needs changing. | Change another mop pad or wash the mop pad. |
| The metal button of pole did not pop up | Metal button to attach pole parts is stuck inside pole. | Please press it out with a small stick, press it several times until it pops up flexibly |

FREQUENTLY QUESTION & ANSWER

| Question | Answer |
|--|---|
| Are the cleaning pads reusable/washable? | Yes, our microfiber mop pads are machine washable. Please use only liquid detergents. Do not use fabric softeners or bleach for best results. Air dry the mops. |
| What floors can the steam mop use for? | Our steam mop is designed to clean hard flooring such as ceramic tile, vinyl, laminate, marble, stone and sealed hard wood floors. Use of your steam mop on waxed or some non-waxed floors may result in a diminished glossiness. |
| Do you need to pump the handle to release the steam or is it automatic? | Our steam mop will release steam automatically. Steam Level is adjustable: Low(delicate floors), Medium(regular cleaning) and High(durable floors or sticky messes). |
| Can you use a cleaning solution with this steam mop or should you only use water in it? | Our steam mop can not use any cleaning solution. We recommend only using distilled water to increase the service life of mop. |

CONTACT US

Company: Onewin Trade Limited

Customer support: service@gorfanty.net

Address: 12/F., San Toi Building, 137-139 Connaught Road Central, Hong Kong

Made in China