



Edgewood, New York 11717-8380

[www.advancetabco.com](http://www.advancetabco.com)

800-645-3166



## **Installation Instructions for ENCLOSED BASE TABLE AND WALL CABINET DOORS (Hinged & Sliding)**



**CHECK FOR CONCEALED DAMAGE  
FILE CLAIM WITH DELIVERING FREIGHT CARRIER**

Tables manufactured by ADVANCE TABCO are designed and constructed for applications including Food Preparation, Cooking, Manufacturing, Material Handling, Laboratory Service and the like. ADVANCE TABCO does not recommend product use for activities employing harsh and active chemicals. Consult factory regarding unusual applications.

© ADVANCE TABCO MAY 2017

## Installation Instructions For HINGED DOOR UNITS

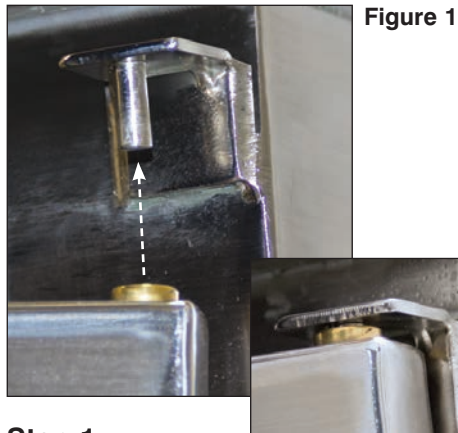


Figure 1

**Step 1:**  
Align brass bushing (top of door) with upper hinge pin. Slide bushing onto pin. **(Figure 1).**



**Step 2:**  
With upper bushing engaged onto upper hinge pin, align bottom bushing with lower hinge pin and lower door onto bottom hinge pin.

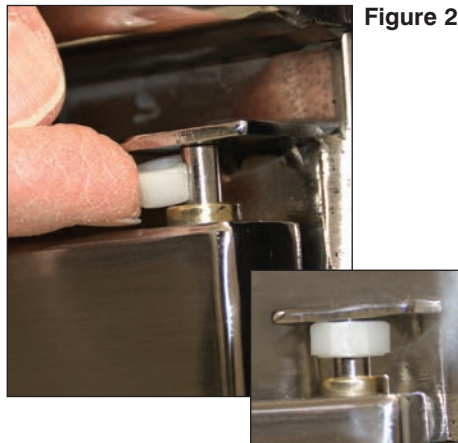


Figure 2

**Step 3:**  
Secure door by pushing white clip onto upper hinge pin. **(Figure 2).**

## Installation Instructions For SLIDING DOOR UNITS



Figure 1

**Step 1:**  
Align top of rear door with upper (rear) guide track located under table top along front edge. Position top of door into track. **(Figure 1).**

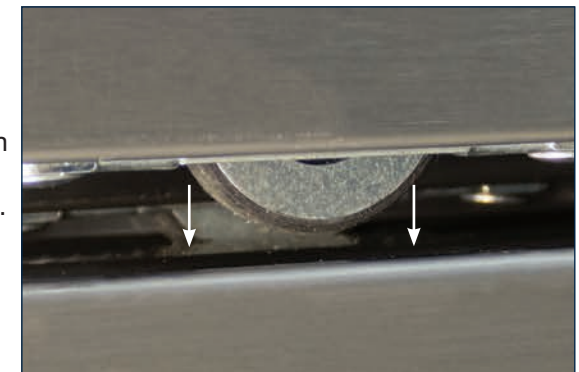


Figure 2

**Step 2:**  
Align bottom of door with die-formed bottom track in undershelf. **(Figure 2).**



Figure 3

**Step 3:**  
Ensure door rolls properly in guide track. Repeat for front door. **(Figure 3).**