



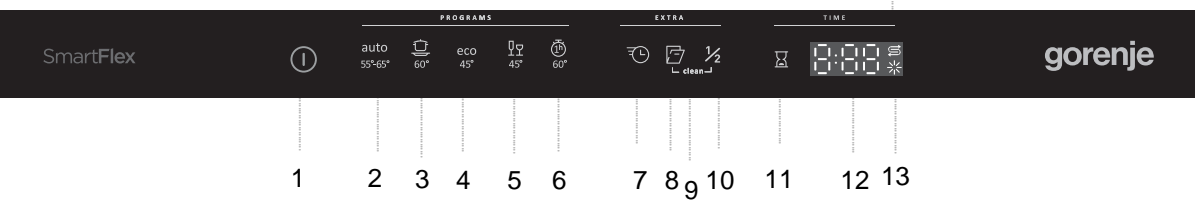
Operating Instructions

Dishwasher

GV583B10AD

gorenje

14



- | | | | |
|---|-------------------|----|---------------------|
| 1 | Main power switch | 8 | Auto open |
| 2 | Auto wash | 9 | Self-clean |
| 3 | Intensive wash | 10 | Half load |
| 4 | Eco wash | 11 | Delayed start |
| 5 | Glass wash | 12 | Display |
| 6 | 1 hour wash | 13 | Rinse aid indicator |
| 7 | SpeedWash | 14 | Salt indicator |

Safety instructions 2

Before washing for the first time 3

Loading the dishwasher 6

Using the dishwasher 7

Settings 11

Care and cleaning 13

Troubleshooting 15

Installation 18

Service 19

Information for test institute 20

Safety instructions

General

- Read the operating instructions and keep them in a safe place!
- Never use the dishwasher for any purpose other than that specified in these operating instructions.
- Do not load the dishwasher door or dishwasher baskets with anything other than dishes.
- Never leave the dishwasher door open as someone may trip on it.
- Use only dishwasher detergent!
- This machine can be used by children aged 8 and upwards, and by people with reduced physical capacity, mental ability, memory loss or lacking experience and knowledge. These individuals must be supervised when using the machine or have instructions on how to use the machine and understand the risks that can occur. Cleaning of the machine must not be carried out by children without supervision.
- Children must be watched to ensure they do not play with the dishwasher.
- Damaged mains cables must only be replaced by a qualified electrician.
- Only use the dishwasher in household-type environments for dishwashing household dishes. All other use is prohibited.
- Never place dishes with solvent residues in the dishwasher due to the risk of explosion. Nor may dishes that contain ash, wax or lubricants be washed in the dishwasher.

WARNING!

Knives and other pointed items must be placed with the points down in the cutlery basket or horizontally in other baskets.

Installation

See the section Installation.

Child safety

- Always start the dishwasher immediately after adding detergent.
- Keep children away from the dishwasher when the door is open. Some detergent may remain inside!
- Do not allow children to use or play with the dishwasher. Be especially vigilant when the door is open.

WARNING!

Children must be supervised – dishwasher detergent is corrosive!

Winter storage/transport

- Store the dishwasher where the temperature remains above freezing.
- Avoid long transport distances in very cold weather.
- Transport the dishwasher upright or laying on its back.

Overflow guard function

The overflow protection starts pumping out the machine and turns off the water supply if the water level in the dishwasher exceeds the normal level. If the overflow protection is triggered, turn off the water supply and call the service department.

Packing material

Please sort waste materials in accordance with local guidelines.

Disposal

- When the dishwasher has reached the end of its service life and is to be disposed of, it should immediately be made unusable. Pull out the power cable and cut it as short as possible.
- The dishwasher is manufactured and labelled for recycling.
- Contact your local authority for information about where and how your dishwasher should be correctly recycled.

Before washing for the first time

The water softener

In order to achieve good dishwashing results, the dishwasher needs soft water (water with low mineral content). Hard water leaves a white coating on dishes and the dishwasher.

Water hardness is specified using the following scales: The German water hardness scale (°dH) and the French water hardness scale (°fH). A water supply with a water hardness in excess of 6°dH (9°fH) must be softened. This is done automatically with the aid of the built-in water softener. In order for the softener to function optimally, it must be adjusted to the hardness of the water supply.

Contact the local waterworks to check the water hardness in your area.

Adjusting the water softener

Chapter Settings on page 8 describes how to adjust the water softener.

Fill up the salt

Before you begin using a dishwasher with a water softener, you must fill the salt compartment with salt for the water

WARNING!

In order to avoid rust stains a dishwashing programme must be started immediately after adding salt.

Never pour dishwasher detergent into the salt compartment. This destroys the water softener!

Do as follows the first time:

- 1 Unscrew the lid as illustrated.
- 2 Place the funnel supplied with the dishwasher in the salt compartment top-up hole. First, pour in about 1 l of water.
- 3 Then add salt, a maximum of 1.5 kg, until the compartment is full.
- 4 Wipe up any excess salt so that the lid can be screwed on firmly.
- 5 Run a programme to ensure that any salt in the dishwasher is rinsed away.

Refill salt indicator

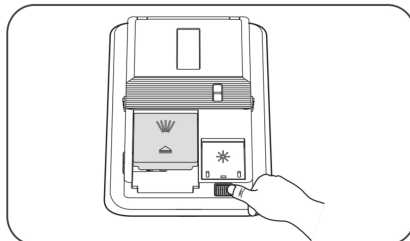
When the salt needs topping up, the above symbol lights on the display.

When the salt runs out, unscrew the cap and fill the container with salt. Water is only needed the first time! Wipe clean and tighten. Run a programme to ensure that any salt in the dishwasher is rinsed away.

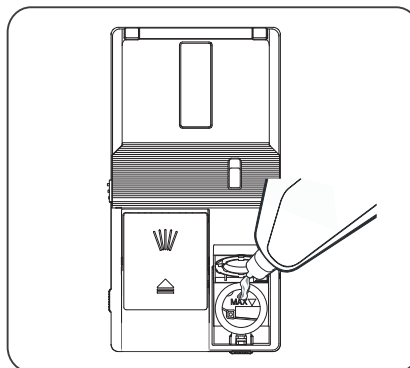
After topping up, it may take a while before the symbol goes out.

Top up with rinse aid

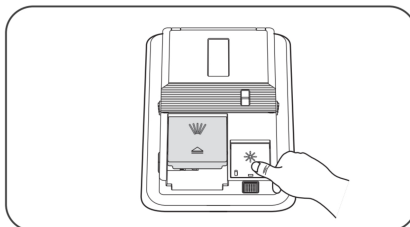
Drying is faster and a better result is achieved if you use rinse aid. You will also achieve a better dishwashing result with clear and spotless dishes.



1. Press the button (as shown in the picture) to open the cover of the rinse aid container.



2. Pour the rinse aid carefully into the container.



3. Close the cover.

Refill rinse aid indicator

When the rinse aid needs topping up, the above symbol lights on the display.

After topping up, it may take a while before the symbol goes out.

Settings

Setting the rinse aid dosage

Rinse aid dispensing can be set from 1:01 (low dose) to 1:05 (high dose). The factory setting is 1:03.

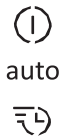
Increase the rinse aid dosage:

- If the dishes have water marks.

Decrease the rinse aid dosage:

- If the dishes have a sticky white/blue film.
- If the dishes are streaked.
- Build-up of foam. If you have very soft water, the rinse aid can be diluted 50:50 with water.

Open the settings menu:



1. Firstly, open the door and turn on the machine. Press the Power button until the display lights up.
2. Within 10 seconds:
-press the Auto button and the Speed Wash button at the same time.
3. The display shows the settings menu (current setting and current set value.)
4. Press the Auto button to change the set value according to your habit.
5. Press the Auto button and Speed Wash button together, or press the Power button to save the setting.

Navigate the settings menu:

Press to select the proper set



Current setting. [arrow pointing to the '0:00' display]
Current setting value. [arrow pointing to the '0:00' display]

You can now adjust the following settings:

Settings	Options	
1. Adjusting the rinse aid reservoir	1:01 - 1:05	Adjusting the rinse aid reservoir. the dishwasher is designed to adjust the consumption by user.



Economic dishwashing

- Do not start the dishwasher until it is fully loaded to save energy.
- Do not rinse under running water. Simply scrape off large food particles before loading the dishwasher.
- Choose an environmentally-friendly detergent. Read the environmental declaration on the packaging!
- If the dishes are only slightly dirty, you can select a programme with a low temperature.
- Better drying results are achieved if you open the door a little once the programme has ended. (If the dishwasher is built-in the surrounding furnishings must be resistant to any condensation.)

Fragile dishes

Some cookware is not dishwasher safe. This can be for several reasons. Some materials cannot withstand strong heat, others can be damaged by dishwashing detergent.

The dishwasher's baskets(EN60436)

The dishwasher is equipped with a top cutlery tray, an upper basket and a lower basket.

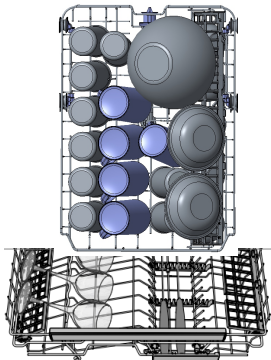
Top cutlery tray

The top cutlery tray has space for cutlery, ladles, whisks, serving cutlery and similar item.



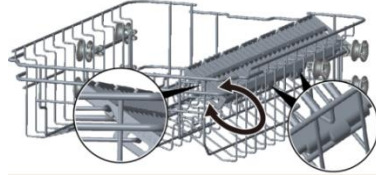
Upper basket

Place glasses, cups, bowls, side plates and saucers in the upper basket. All dirty surfaces should face inwards and downwards! Wine glasses are placed on the wine glass shelf and knives are placed in the knife stand on the right (if fitted).



Cup shelf

The cup shelf can be folded up or down for better stacking of pots and pans. Make sure the cup shelf is on the correct position when folded up as show in the picture.



Raising and lowering the upper basket

The height of the upper basket can be adjusted in order to create more space for large utensils both for the upper/lower basket. The height of the upper basket can be adjusted by lift up the basket for the upper position, and up press the handle to lower the upper basket, see the picture below:

Lift the basket for upper position



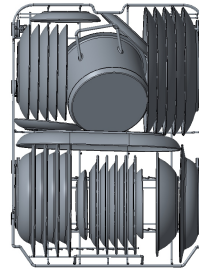
Up press the handle to lower the basket



Adjust handle

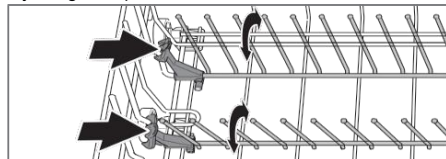
Lower basket

Place plates, side plates, serving dishes, pots and cutlery (in the cutlery basket) in the lower basket.



Foldable tines

The foldable tines can be folded up or down to make it easier to load pots, bowls and glasses. Release the foldable tines by pressing the catch inwards before adjusting their position.

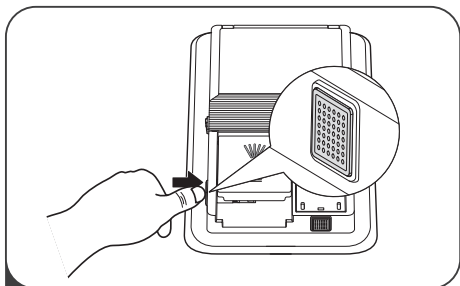


NOTE!

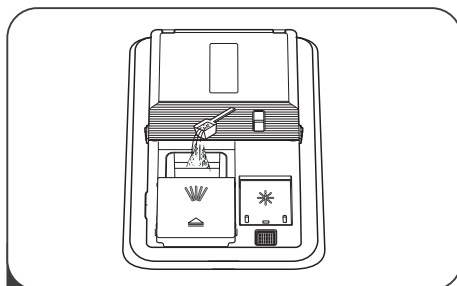
Place the dishes in the machine so that the rinse water will run off them; this is especially important for plastic.

Check that the spray arms can rotate freely.

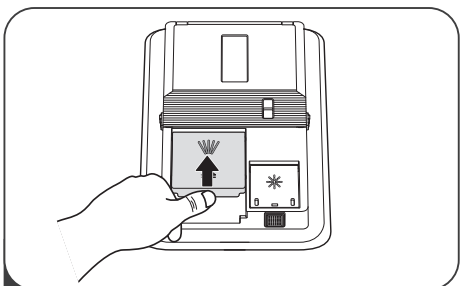
Options 1. Filling the detergent



1A Press the button to open the detergent container.



1B Add detergent into the container.
Please refer to the Wash Cycle Table for the specific quantity of detergents.



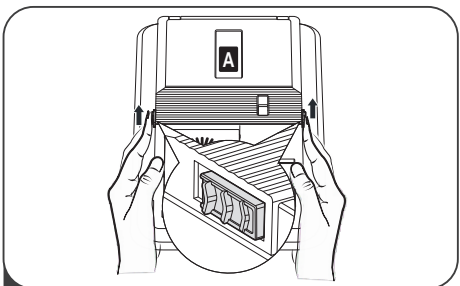
1C Push in the direction of the arrow and close the cover.

NOTE:

If you want to use regular (powder, tablet, etc) detergent, please ensure the Automatic Dosing System function is off, otherwise the cleaning performance will be influenced.

Options 2. Filling the Automatic Dosing System

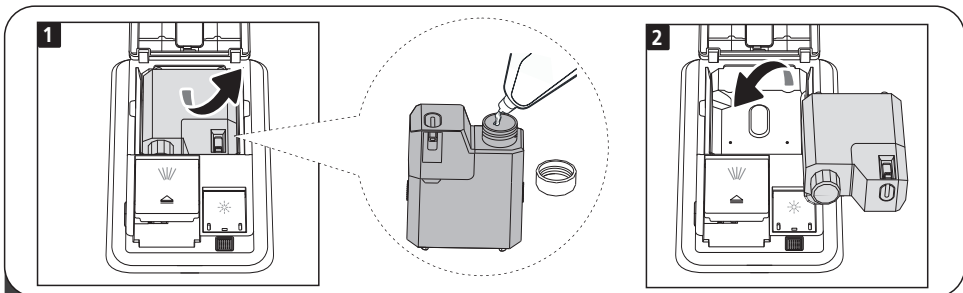
You should activate the Automatic Dosing System function before using the Automatic Dosing System.



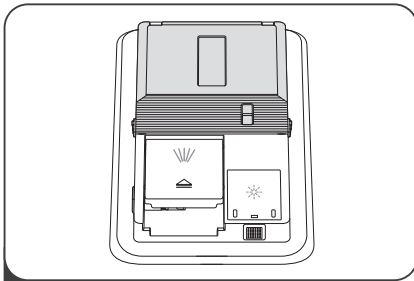
2A

Push the left and right switches in the direction of the arrow in the picture simultaneously, the Automatic Dosing System cover will open.

Using the dishwasher



- 2B**
1. Take out the empty liquid detergent bottle and put the liquid detergent into it as Figure 1 (Use only liquid detergent for the dishwasher).
 2. Install the refill bottle or a new bottle as Figure 2.



- 2C** Close the cover.

NOTE:

1. The capacity of the bottle of liquid detergent is about 300ml.
2. Bottles are not consumables, and the liquid detergent inside can be refilled by oneself after use.
3. It is recommended to replace the bottle after filling 20 times (about 6-8 months).

NOTE:

1. Use only liquid detergent suitable for the dishwasher.
2. Do not mix different brands of liquid detergents.
3. Do not fill the liquid detergent box with liquids or chemical cleaners (vinegar, bleach etc.) other than liquid detergent.
4. Liquid detergents that lost their fluidity and became firm must not be used in automatic liquid detergent dosing system.
5. If a different brand or type of liquid detergent will be used, make sure previous detergent is depleted completely and then remove and clean the liquid detergent tank under tap water.
6. Wipe clean any spilled rinse aid outside the reservoir. Otherwise, it will cause foaming in the next washing cycle, reducing the washing performance of the product.
7. When the liquid detergent is less than 20%, the screen will display *Full* when you are choosing a program. Here you can only use the automatic dosing system about twice. Please refill the liquid detergent in time.

3-in-1/All-in-one detergent

Read through the directions for these products carefully. If anything is unclear, contact the detergent manufacturer.

If the detergent tablets contain rinse aid the dishwasher's rinse aid dosing can be deactivated. See the chapter Settings. Note that the salt compartment must be filled with salt.

The main power switch

Press and hold the main power switch until the display lights up.

PROGRAMS - Choose programme

Press the Programme selector one or more times until the desired programme symbol is activated.

Auto wash

The dishwasher can measure how dirty the dishes are and adjust water consumption and temperature accordingly. When newly installed, the programme needs to be run five times before it is fully adapted and can provide the best results.

Intensive wash

Programme for very dirty dishes, such as pans, casserole dishes and oven dishes. Also ideal for situations where demands on hygiene are especially high, such as when dishwashing baby bottles and cutting boards. If these dishes do not completely fill the dishwasher, you can add plates and the like.

Eco wash

This programme is intended for cleaning normally dirty dishes and is the most effective programme in terms of combined energy and water consumption.

Glass wash

This programme is used for glasses and porcelain that is slightly dirty, for lightly soiled crockery and glass..

1 hour wash

For normally soiled loads that need quick wash..

EXTRA - Selecting Options

To select an option, press one of the option buttons until the option is activated. The available options vary between programmes and some options cannot be combined (available options glow dimly).

Speed Wash

This option shortens the programme time, but uses more energy and water.

Auto open

The dishwasher door opens automatically at the end of The program, which improves the drying results. When you pressing this button , the corresponding indicator will be lit.

Half load

This option adapts the dishwashing programme to a half-filled dishwasher, using less energy and water.

Clean

This program provides an effective cleaning of the dishwasher itself.

Delayed start

When you select Delayed start the dishwasher will start 1-24 hours after you close the door.

- 1 Press the button once to activate Delayed start. Press the button several times – or hold it in – to set the desired number of hours.
- 2 Close the door and the dishwasher counts down 1 hour at a time and starts after the selected delay.

If you want to cancel the Delayed start option, open the door and press and hold the main power switch until the display turns off.

Start the dishwasher

Close the door to start the dishwasher. If the main power switch is on the dishwasher will start automatically when the door is closed.

TIME - Time remaining

Once you have chosen a programme and options, the time the programme took when last used is displayed.

Stopping or changing a programme

Stopping or changing a programme

If you want to change programme after starting the dishwasher, open the door then press and hold the main power switch until the display turns off. Add more detergent if the lid of the detergent dispenser has opened. Then press the main power switch, choose a new programme and close the door.

Do you want to add more dishes?

Open the door. The dishwasher stops automatically. Add the dishes and close the door. After a while, the dishwasher continues the programme.

How to get the best drying results

- Fully load the dishwasher.
- Place the dishes in the machine so that the rinse water will run off them; this is especially important for plastic.
- Top up with rinse aid or increase the rinse aid dosage level.
- Activate the Extra dry option.
- Open the door a little once the programme has finished.
- Allow the dishes to cool before unloading the dishwasher.

Once the programme has finished

The dishwasher switches off automatically after the programme ends. Shut off the water tap after each use.

If the dishwasher is switched off using the main power switch or during a power cut

If the dishwashing programme was not finished, the interrupted programme continues when power is restore

NOTE!

It is dangerous to open the door when washing, because the hot water may scald you.

Programme chart(EN60436)

PROGRAMS - Program	Detergent, compartment 1 / 2 (ml)	EXTRA - Options	Prewashes	Main wash	Number of rinses	Final rinse	Consumption values ¹⁾		
							Dishwashing time (approx. hrs:min)	Energy (approx. kWh)	Water cons. (L)
Auto wash	4 / 14	Auto open	1	55~65 °C	3	55~65 °C	2:30	0.850-1.375	9.3-15.3
Intensive wash	4 / 14	Speed Wash, Auto open Half load	1	60 °C	2	65~72 °C	2:55	1.005-1.130	12.7
Eco wash ²⁾	18	Speed Wash, Auto open Half load		45 °C	2	45 °C	3:45	0.512	8.0
Glass wash	4 / 14	Speed Wash, Auto open Half load	1	45 °C	2	55~60 °C	2:00	0.760-0.805	12.7
1 hour wash	18	Speed Wash, Auto open Half load		60 °C	2	55~60 °C	0:58	0.840	9.6

1) Consumption values vary depending on the temperature of the incoming water, room temperature, load size, selected additional functions and more.

2) This dishwashing programme is the standard cleaning cycle used to compile the energy labelling information. It is intended for washing normally dirty dishes and is the most effective programme in terms of combined energy and water consumption.

Settings

Open the settings menu:



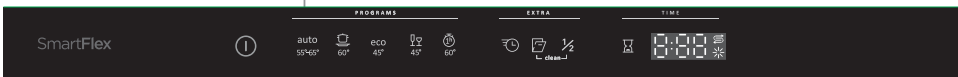
auto



1. First, open the door. Turn on the machine. Press and hold the main power switch until the display lights up.
2. Within 10 seconds:
 - press the Auto button and Speed Wash button at the same time.
3. Press the Speed Wash button once again.
4. The display shows the settings menu (current setting and its currently set value).
5. press the Auto button to select the proper set according to your using habits.
6. press the Auto and Speed Wash button together, or the press the Power button to save the setting.

Navigate the settings menu:

Press to select the proper set



Current setting.
Current setting value.

You can now adjust the following settings:

Settings	Options																																					
1. Water hardness	2:00 - 2:09	<p>Adjusting the water softener. Read off the appropriate setting from the water hardness table below.</p> <table border="1"> <thead> <tr> <th>°dH</th> <th>°fH</th> <th></th> <th>°dH</th> <th>°fH</th> <th></th> </tr> </thead> <tbody> <tr> <td>0-5</td> <td>0-9</td> <td>2:00</td> <td>20-24</td> <td>35-43</td> <td>2:05</td> </tr> <tr> <td>6-8</td> <td>10-14</td> <td>2:01</td> <td>25-29</td> <td>44-52</td> <td>2:06</td> </tr> <tr> <td>9-11</td> <td>15-20</td> <td>2:02</td> <td>30-39</td> <td>53-70</td> <td>2:07</td> </tr> <tr> <td>12-14</td> <td>21-25</td> <td>2:03</td> <td>40-49</td> <td>71-88</td> <td>2:08</td> </tr> <tr> <td>15-19</td> <td>26-34</td> <td>2:04</td> <td>50+</td> <td>89+</td> <td>2:09</td> </tr> </tbody> </table> <p>Do not forget to put salt in the salt compartment after you have set the water softener to 2:01 - 2:09.</p> <p><i>For a water supply with a hardness under 6°dH (9°fH), select 2:00. The water softener is deactivated and no salt is needed.</i></p>	°dH	°fH		°dH	°fH		0-5	0-9	2:00	20-24	35-43	2:05	6-8	10-14	2:01	25-29	44-52	2:06	9-11	15-20	2:02	30-39	53-70	2:07	12-14	21-25	2:03	40-49	71-88	2:08	15-19	26-34	2:04	50+	89+	2:09
°dH	°fH		°dH	°fH																																		
0-5	0-9	2:00	20-24	35-43	2:05																																	
6-8	10-14	2:01	25-29	44-52	2:06																																	
9-11	15-20	2:02	30-39	53-70	2:07																																	
12-14	21-25	2:03	40-49	71-88	2:08																																	
15-19	26-34	2:04	50+	89+	2:09																																	

Settings

Open the settings menu:



auto



1. First, open the door. Turn on the machine. Press and hold the main power switch until the display lights up.
2. Within 10 seconds:
-press the Auto button and Speed Wash button at the same time.
3. Press the Speed Wash button twice again.
4. The display shows the settings menu (current setting and its currently set value).
5. press the Auto button to select the proper set according to your using habits.
6. press the Auto and Speed Wash button together, or the press the Power button to save the setting.

Navigate the settings menu:

Press to select the proper set



Current setting.

Current setting value.

Settings	Options	
2. TAB (3-in-1/all-in-one detergent)	3:00 (Off) 3:01 (On)	<p>You can activate this setting when using 3-in-1/ All-in-one detergent. The dishwashing programmes automatically adapt to provide the best possible dishwashing and drying results every time. If this setting is activated there is no need to add rinse aid since this option disables rinse aid dispensing. It also reduces the amount of salt added to the water softener. Note that salt must be put in the salt</p> <p>NOTE!</p> <p>In order to achieve good dishwashing results, it is essential to check which type of detergent or all-in-one product best suits your needs! Read the detergent packaging carefully for information on proper use. Always follow the directions for use or information on the detergent packaging!</p>

Settings

Open the settings menu:



1. First, open the door. Turn on the machine. Press and hold the main power switch until the display lights up.
2. Within 10 seconds:
-press the Auto button and Speed Wash button at the same time.
3. Press the Speed Wash button three times again.
4. The display shows the settings menu (current setting and its currently set value).
5. press the Auto button to select the proper set according to your using habits.
6. press the Auto and Speed Wash button together, or the press the Power button to save the setting.

Navigate the settings menu:

Press to select the proper set

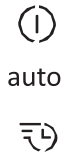


Current setting.
Current setting value.

Settings	Options	
3. Buzzer volume	4:00 (Off) 4:01 (On)	The dishwasher uses a buzzer to indicate when you press a button, or a programme is finished, or when a fault has occurred.

Settings

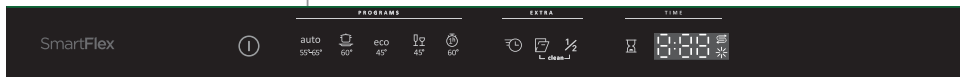
Open the settings menu:



1. First, open the door. Turn on the machine. Press and hold the main power switch until the display lights up.
2. Within 10 seconds:
-press the Auto button and Speed Wash button at the same time.
3. Press the Speed Wash button four times again.
4. The display shows the settings menu (current setting and its currently set value).
5. press the Auto button to select the proper set according to your using habits.
6. press the Auto and Speed Wash button together, or the press the Power button to save the setting.

Navigate the settings menu:

Press to select the proper set



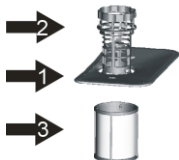
Current setting.
Current setting value.

Settings	Options	
4. Auto Dose	5:00 (Off) 5:01 (On)	The Auto Dose system distributes the detergent and rinse aid automatically according to the washing program. Do not use other detergent (powder, tablet and etc) when the function is activated.

Care and cleaning

Filter System

The filter prevents larger remnants of food or other objects from getting inside the pump. The residues may block the filter, in this case they must be removed.



Filter

The filter system consists of a coarse filter, a flat (Main filter) And a microfilter (Fine filter).

1 Main filter.

Food and soil particles trapped in this filter are pulverized by a special jet on the lower spray arm and washed down drain.

2 Coarse filter.

Larger items, such as pieces of bones or glass, that could block the drain are trapped in the coarse filter. To remove the items caught by the filter, gently squeeze the tap on the top of this filter and lift out.

3 Fine filter.

This filter holds soil and food residues in the sump area prevents them from being redeposited on the dishes during wash cycle.

Filter assembly

The filter efficiently removes food particles from the wash water, allowing it to be recycled during the cycle. For best performance and results, the filter must be cleaned regularly. For this reason, it is a good idea to remove the larger food particles trapped in the filter after each wash cycle by rinsing the semicircular filter and cup under running water. To remove the filter device, pull the cup handle in the upward direction.

1. Turn the filter counterclockwise.
2. lift the filter assy up.

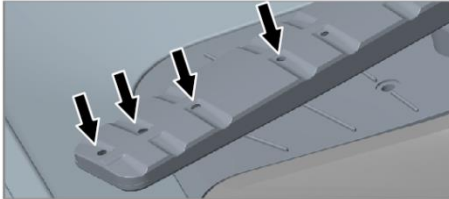
NOTE!

The dishwasher must not be used without the filters in place!

Dishwashing results may be affected if the coarse filter is incorrectly fitted.

Spray arms

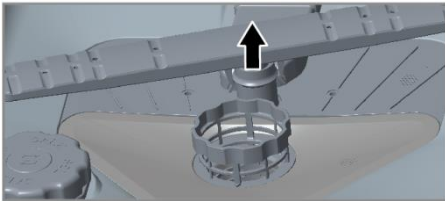
Holes and bearings can sometimes become blocked. Remove any debris using a pin or the like. The spray arms also have holes underneath.



To facilitate cleaning you can remove the spray arms. Remember to fit them firmly back into place afterwards.

Lower spray arm

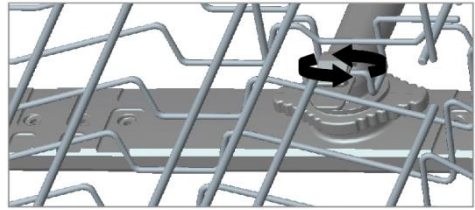
- Pull the lower spray arm straight up to release it.



Upper spray arm

- 1 Pull out the upper basket.

- 2 Unscrew the spray arm bearings counterclockwise to remove the spray arm from the upper basket.



Door

When cleaning the edge around the door, use only a slightly damp cloth (with a little cleaner if necessary).

Limescale deposits

The dishwasher tub is made of stainless steel and is kept clean through normal use. If you have hard water, limescale deposits may build up in the dishwasher. If this happens, run the Intensive wash programme with two tablespoons of citric acid in the detergent compartment (with no dishes in the machine).

Front panel

Keep the buttons clean and free from grease. Wipe them clean with a dry or slightly damp cloth. Never use cleaners – they can scratch the surface. Use the main power switch to turn off the dishwasher before cleaning the buttons to avoid activating any buttons unintentionally.

Troubleshooting

Type of fault on the display		Action
E1	Water Inlet Fault	Check that the water tap is on. Check that the outer filter on the inlet hose is not blocked. If the problem persists, call the service department.
E3	Not reaching required temperature	Call the service department.
E4	Overfilling	Turn off the water tap and call the service department.
EC	Washing control system fail	PCB or motor fail.
Ed	Failure of communication between main PCB with display pcb	Open circuit or break wiring for the communication.

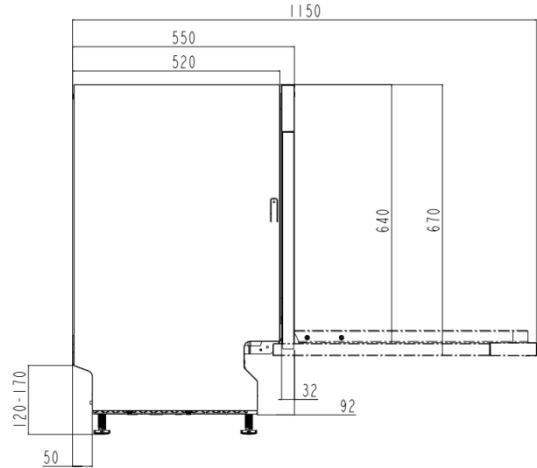
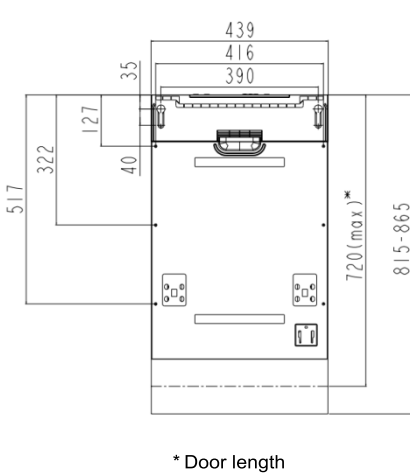
Press any button to clear the error message.

Problem	Possible causes	Action
The buttons do not react when pressed.	You have pressed the buttons too soon after opening the door.	Wait a moment then try again.
	The buttons are dirty.	Clean with a dry or slightly damp cloth.
	The door is closed.	Open the door. The buttons only react to use when the door is open.
Cannot close door.	The baskets are not correctly positioned.	Check that the baskets are correctly positioned horizontally.
		Check that the dishes are not blocking the baskets from sliding properly into place.
The dishwasher does not start.	The door is not properly closed.	Check.
	You have opened the dishwasher to add more dishes while a programme is in progress.	Close the door and wait. After a while, the dishwasher continues the programme.
	A fuse/circuit breaker has been tripped.	Check.
	The plug is not plugged into the wall socket.	Check.
	The water tap is turned off.	Check.
	Overflow/leaks.	Check.
	A whirring sound (the drainage pump) is heard from the dishwasher and does not stop when the main power switch is turned off.	Turn off the water tap. Pull out the plug and call the service department.
Check that the Delayed start option has not been selected.	Press and hold the main power switch until the display turns off if you want to cancel the Delayed start option. Restart the dishwasher.	

Problem	Possible causes	Action
The dishes are not clean.	The spray arms do not rotate.	Remove the arms and clean them.
		Check that the dishes are not blocking the spray arms.
	Old detergent. Detergent is a perishable product.	Avoid large packages.
	Incorrect detergent dosage.	Dose according to water hardness. Far too much or far too little detergent results in poorer dishwashing results.
	Dishwashing programme too weak.	Select a more powerful programme.
	Dishes loaded incorrectly.	Do not cover porcelain with large bowls or the like. Avoid placing very tall glasses in the corners of the baskets.
	Glasses and cups have toppled over during the programme.	Place dishes to sit steady.
Spots on stainless steel or silver.	The filter is not correctly fitted.	Screw the filter firmly into place. See the section Care and cleaning.
	Some foodstuffs, such as mustard, mayonnaise, lemon, vinegar, salt and dressings, can mark stainless steel if left for too long.	Rinse off these types of foodstuffs if not starting the dishwasher immediately. Why not use the Rinse programme.
Spots or films on the dishes.	All stainless steel can cause spots on silver if they come into contact during dishwashing. Aluminium can also cause spots on dishes.	Silver and stainless steel items should not come into contact during dishwashing.
	The water softener is leaking salt.	Check that the salt compartment lid is properly tightened. Otherwise call the service department.
	Incorrect water softener setting.	See the section Settings.
	Incorrect rinse aid dosage setting.	See the sections Before washing for the first time and Settings.
	Salt compartment empty.	Top up with salt. See the section Before washing for the first time.
	3-in-1/ All-in-one detergent is used and the setting TAB (3-in-1/ All-in-one detergent) is activated.	Inactivate the setting TAB (3-in-1/ All-in-one detergent) and top up salt and rinse aid.
The dishes have a sticky white/blue film.	Too high temperature and/or too much detergent can cause etching on crystal. Unfortunately, this cannot be repaired, only prevented.	Wash crystal at a low temperature and with a conservative amount of detergent. Contact the detergent manufacturer.
	Rinse aid dosage setting too high.	Reduce the amount. See the sections Before washing for the first time and Settings. If you have very soft water, you may want to dilute the rinse aid 50:50 with water.
Spots left after washing.	Lipstick and tea can be difficult to wash off.	Use a detergent with a bleaching agent.

Problem	Possible causes	Action
Rattling sound when dishwashing.	The dishes are not correctly placed or the spray arms are not rotating.	Check that the dishes are placed securely. Spin the spray arms to make sure they can rotate.
Water remains in the dishwasher.	Blocked drainage hose.	Loosen the drainage hose where it connects to the sink unit's water trap. Check that no debris has fastened. Is the cone-shaped part of the pipe cut to an inner diameter of at least 14 mm?
	Kink in drainage hose.	Check that the hose is free from kinks and sharp bends.
	The filters are blocked.	Clean the coarse and fine filters.
	Debris in the drainage pump.	Clean the drainage pump. See the section Care and cleaning.
Bad odour in dishwasher.	Dirt around the seals and in corners.	Clean with washing-up brush and low foaming cleaner.
	Low temperature programmes have been selected for a prolonged period.	Run a programme with a higher temperature about once a month.
The dishes are not dry enough.	Drying power too low.	Activate the Extra dry option.
	The dishwasher is not fully loaded.	Fully load the dishwasher.
	Rinse aid needs topping up or dosage is set too low.	Top up with rinse add or increase the rinse aid dosage. See the sections Before washing for the first time and Settings.
		Open the door a little once the programme has finished.

Installation



It is important that you read through and follow the instructions and directions below. Conduct installation and connection in accordance with the separate installation instructions.

Safety instructions

- Connections to electricity, water and drainage must be performed by a qualified professional.
- Always follow applicable regulations for water, drainage and electricity.
- Take care during installation! Wear protective gloves! There must always be two people!
- Place a watertight protective tray on the floor beneath the dishwasher to prevent damage from any water leaks.
- Before screwing the dishwasher into place, test the dishwasher by running the Rinse programme. Check that the dishwasher fills with water and drains. Check also that none of the connections leak.

! WARNING!

Turn off the water supply when installing the dishwasher!

! WARNING!

The plug must be disconnected or power to the socket turned off while the work is carried out!

Setup

- The recess and connection dimensions are included in the separate installation instructions. Check that all dimensions are correct before starting the installation. Note that the height of the cover door can be adjusted to match other fittings.
- Make sure the area on which the dishwasher is to be installed is firm. Adjust the adjustable feet so that the dishwasher is level.

Drainage connection

See the separate installation instructions for necessary information.

The drainage hose may be extended by a maximum of 3 m (the total length of the drainage hose must not exceed 4.5 m). Any joints and connecting pipes must have an internal diameter of at least 14 mm. However, the drainage hose should ideally be replaced with a new hose without joints.

No part of the drainage hose may be more than 950 mm above the bottom of the dishwasher. The hose must not be routed directly to a floor drain or the like. In such cases, the hose can act as a siphon and empty the dishwasher.

The hose must always discharge at least 350 mm above the bottom of the machine.

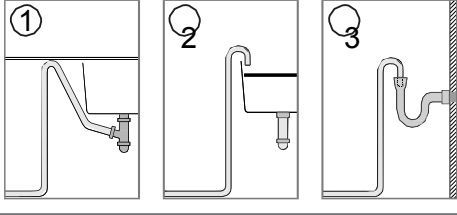
Ensure that the drainage hose has no kinks.



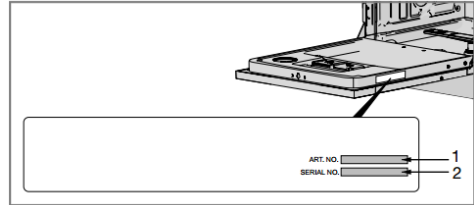
Service

NOTE!

When the drainage hose is routed to a connection nipple on the sink unit's water trap (see illustration 1), please note that the hose must be attached at the same height as the underside of the sink unit, otherwise dishwasher from the sink may flow back into the dishwasher. For other connection alternatives, see illustrations 2 and 3.



Read the chapter Troubleshooting before contacting the service department. Provide the details on the serial number plate in all contact. Include the article number (1) and the serial number (2).



Connection to water supply

Use only the supply hose provided with the dishwasher. Do not re-use old hoses or other spare supply hoses.

The supply pipe must be fitted with a stopcock. The stopcock must be easily accessible, so that the water can be shut off if the dishwasher has to be moved.

Once the installation is complete, the stopcock should be opened to allow the pressure to settle for a while and to check that all connections are tight.

Connect to cold water...

If you use oil or electricity to heat your home.

Electrical connection

Information about the electrical connection can be found on the serial number plate. This specification must match the electricity supply.

The dishwasher must be connected to an earthed socket.

The electric wall socket must be placed outside of the installation area to be easily accessible after installing the dishwasher. Do not use an extension cord!

NOTE!

Repairs and maintenance relating to safety or performance must be carried out by a qualified professional.

Information for test institute

Request test institute information via e-mail
dishwashers@appliance-development.com.

The request should include the details on the serial number
plate. Include the article number (1) and the serial number
(2).

