

SENCOR®

SDC 4930



User's manual

Návod k obsluze

Návod na obsluhu

Használati útmutató

Instrukcja obsługi

**LED BIG DIGITAL CLOCK
WITH DUAL ALARM**

**VELKÉ LED DIGITÁLNÍ HODINY
S DVOJITÝM BUDÍKOM**

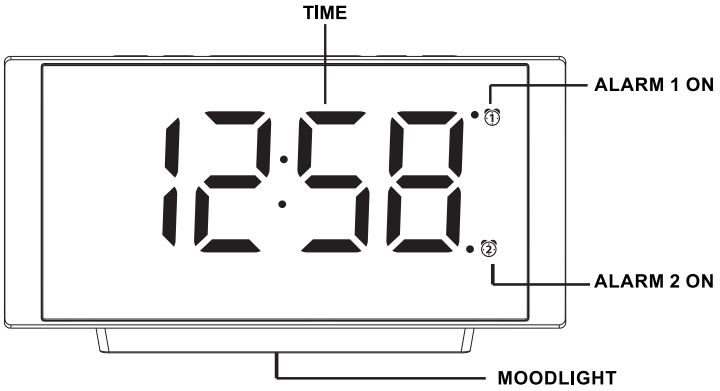
**VELKÉ LED DIGITÁLNE HODINY
S DVOJITÝM BUDÍKOM**

**NAGY LED-ES DIGITÁLIS ÓRA
KÉT ÉBRESZTŐVEL**

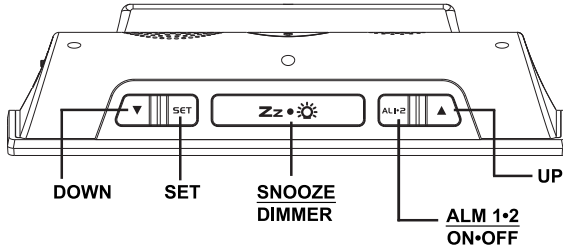
**DUŻY CYFROWY ZEGAR LED
Z PODWÓJNYM BUDZIKIEM**

EN CZ SK HU PL

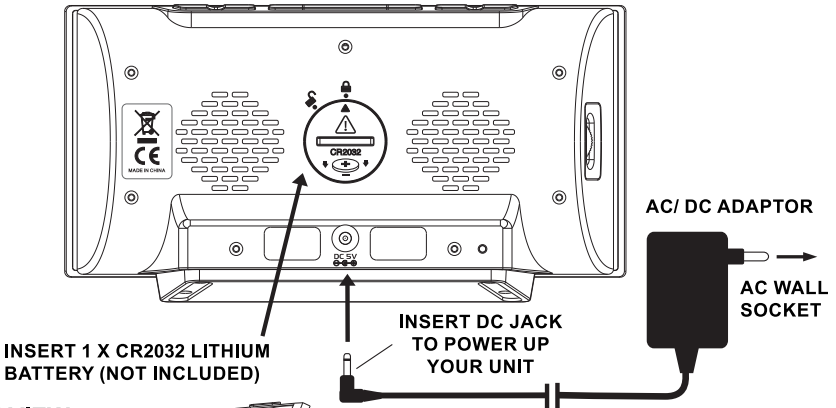
FRONT VIEW



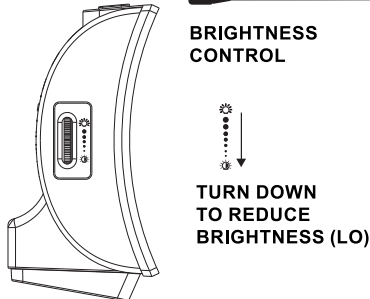
TOP VIEW



BACK VIEW



SLIDE VIEW



Thank you for your purchase of this LED clock. Please read these instructions carefully and keep the manual for future reference.

INSTALLATION

Plug in the AC/DC adaptor to an AC household outlet, and then plug the DC jack to the middle back of the unit. The time display is turned on (at Low-dim brightness). Your unit is ready to work for you.

BACKUP BATTERY INSTALLATION

Your alarm clock requires one CR2032 lithium battery (not included) to preserve the setup in the event of a temporary power failure.

1. Place your clock radio face down on a flat and soft surface.
2. Use a coin and turn counterclockwise to open the battery cover located at the back of the unit.
3. Insert one new CR2032 lithium battery into the battery compartment with the “+” side facing up as indicated.
4. Use a coin and turn clockwise to lock the battery cover.

If AC power is interrupted and backup batteries are being used, the time and all settings of your unit will be kept. Alarm does not function and time display does not light up.

TO SET TIME AND SNOOZE DURATION

1. Press **SET** once, the hour digits flash. Press ▲ or ▼ to set the hours. Press and hold ▲ or ▼ will accelerate setting at high speed.
2. Press **SET** once again, the minute digits flash. Press ▲ or ▼ to set the minutes. Press and hold ▲ or ▼ will accelerate setting at high speed.
3. Press **SET** once again, “05” flash, press ▲ or ▼ to set the snooze duration (from 5 min to 60 min.).
4. Press **SET** again to confirm. The set time is displayed.

Note: the clock exits the set mode when no key is pressed in approximate 10 seconds.

TO SET ALARM 1 AND ALARM 2 (default alarm 6:00)

1. Press **AL1.2** once, Alarm 1's LED and Alarm 1's hour digit “6” flash, press ▲ or ▼ to set the desired hour. Press and hold ▲ or ▼ to accelerate setting at high speed.
2. Press **AL1.2** once again, the minute digits “00” flash. Press ▲ or ▼ to set desired minutes. Press and hold ▲ or ▼ to accelerate setting at high speed.
3. Press **AL1.2** once again, LED displays “OFF”. Press ▲ or ▼ to select alarm “ON”
4. Press **AL1.2** once again, LED displays “HI”. Press ▲ or ▼ to select “LO” alarm sound
5. Press **AL1.2** once again, Alarm 2's LED and Alarm 2's hour digit “6” flash. Repeat Step 2 to 4 above to set Alarm 2.
6. To store your alarm settings, press **AL1.2** once again (or if no button is pressed in around 10 seconds), your clock radio will return to normal time display mode.

When the related alarm is turned on, it will be indicated by the appearance of the ① and / or the ② LED on the right side of the display.

Note: Alarm function only works when your clock is powered by AC/DC adaptor.

TO STOP AND RESET THE ALARM TO COME ON THE NEXT DAY

When alarm 1 or 2 is sounding, the related alarm LED flashes. Press **AL1.2** once to stop the alarm and reset it to come on the following day. After that ① LED and/or ② LED remain on the display.

TO ACTIVATE THE SNOOZE FUNCTION (default 5 minutes)

When alarm is sounding, press **Zz • ☀** once, the alarm will be silenced momentarily and come on again after the set snooze duration.

Note: if your second alarm activates while the first alarm is sounding or it is in the snooze mode, the second alarm overrides the first alarm (the first alarm is reset to come on the next day).

TO USE THE HI-LO DIMMER

In normal time display mode, press **Zz • ☀** to adjust the brightness (HI/LO).

TO USE THE MOODLIGHT

At normal time display mode, press and hold **Zz • ☀** to turn on or turn off the moodlight.

ADJUSTABLE LO DIM LED BRIGHTNESS

When LO dim brightness is selected by pressing **Zz • ☀** once, turn the knob at the left side to adjust your desired LO dim LED display. Rotate downwards to reduce and upwards to increase the Lo dim brightness.

Note: HI LED brightness is not adjustable.

TROUBLE SHOOTING

If your clock displays irrelevant time or does not function properly, which maybe caused by electro-static discharge or other interference. Unplug the DC jack at the back of the unit, slide open the battery cover and take out the batteries. Then re-plug the DC jack and reinstall batteries by observing the correct +/- polarity. Your unit will be reset to default settings and you need to set it again.

CARE OF YOUR PRODUCT

1. Place your unit on a stable surface, away from sources of direct sunlight or excessive heat or moisture.
2. Protect your furniture when placing your units on a natural wood and lacquered finish by using a cloth or protective material between it and the furniture.
3. Clean your unit with a soft cloth moistened only with mild soap and water. Stronger agents such as Benzine, thinner or similar materials can damage the surface of the unit. Make sure the unit is unplugged before cleaning.
4. If the unit is not to be used for a prolonged period, such as a month or longer, remove the batteries to prevent possible corrosion. Should the battery compartment become corroded or dirty, clean the compartment thoroughly and replace the batteries.
5. Do not open the inner back case or tamper with any components of this clock.
6. Do not plug in any other AC/AC or AC/DC adaptor with incorrect specifications or voltage.
7. This symbol indicates that this product, and any batteries, should not be disposed of in normal household waste but taken to appropriate local recycling center, where available. Never throw batteries in a fire or attempt to open outer casing.



SPECIFICATIONS

| | |
|--------------------|-------------------|
| Alarm duration | 2 Minutes |
| Snooze duration | 5 to 60 minutes |
| Default settings:- | |
| Time | 0:00, 24HR format |
| Alarm 1 and 2 | 6:00 (Alarm OFF) |
| Snooze duration | 05 (5 minutes) |

INSTRUCTIONS AND INFORMATION REGARDING THE DISPOSAL OF USED PACKAGING MATERIALS

Dispose of packaging material at a public waste disposal site.

DISPOSAL OF USED ELECTRICAL AND ELECTRONIC APPLIANCES



The meaning of the symbol on the product, its accessory or packaging indicates that this product shall not be treated as household waste. Please, dispose of this product at your applicable collection point for the recycling of electrical & electronic equipment waste. Alternatively in some states of the European Union or other European states you may return your products to your local retailer when buying an equivalent new product. The correct disposal of this product will help save valuable natural resources and help in preventing the potential negative impact on the environment and human health, which could be caused as a result of improper liquidation of waste. Please ask your local authorities or the nearest waste collection centre for further details. The improper disposal of this type of waste may fall subject to national regulations for fines.

For business entities in the European Union

If you wish to dispose of an electrical or electronic device, request the necessary information from your seller or supplier.

Disposal in other countries outside the European Union

If you wish to dispose of this product, request the necessary information about the correct disposal method from local government departments or from your seller.



The product meets EU requirements.

Changes to the text, design and technical specifications may occur without prior notice and we reserve the right to make these changes.

Address of the manufacturer: FAST ČR, a.s., Černokostelecká 1621, Říčany CZ-251 01

SENCOR®

EN Warranty conditions

Warranty card is not a part of the device packaging.

This product is warranted for the period of 24 months from the date of purchase to the end-user. Warranty is limited to the following conditions. Warranty is referred only to the customer goods using for common domestic use. The claim for service can be applied either at dealer's shop where the product was bought, or at below mentioned authorized service shops. The end-user is obligated to set up a claim immediately when the defects appeared but only till the end of warranty period. The end user is obligated to cooperate to certify the claiming defects. Only completed and clean (according to hygienic standards) product will be accepted. In case of eligible warranty claim the warranty period will be prolonged by the period from the date of claim application till the date of taking over the product by end-user, or the date the end-user is obligated to take it over. To obtain the service under this warranty, end-user is obligated to certify his claim with duly completed following documents: receipt, certificate of warranty, certificate of installation.

This warranty is void especially if apply as follows:

- Defects which were put on sale.
- Wear-out or damage caused by common use.
- The product was damaged by unprofessional or wrong installation, used in contrary to the applicable instruction manual, used in contrary to legal enactment and common process of use or used for another purpose which has been designed for.
- The product was damaged by uncared-for or insufficient maintenance.
- The product was damaged by dirt, accident of force majeure (natural disaster, fire, and flood).
- Defects on functionality caused by low duality of signal, electromagnetic field interference etc.
- The product was mechanically damaged (e.g. broken button, fall).
- Damage caused by use of unsuitable media, fillings, expendable supplies (batteries) or by unsuitable working conditions (e.g. high temperatures, high humidity, quakes).
- Repair, modification or other failure action to the product by unauthorized person.
- End-user did not prove enough his right to claim (time and place of purchase).
- Data on presented documents differs from data on products.
- Cases when the claiming product cannot be indentified according to the presented documents (e.g. the serial number or the warranty seal has been damaged).

Authorized service centers

Visit www.sencor.eu for detailed information about authorized service centers.

