



Quick Start Guide



Govee Home App

For FAQs and more information,
please visit: www.govee.com

Model: H6063
Govee Gaming Wall Light



Step 1

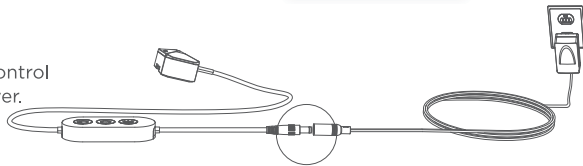
Before assembling, watch the video tutorial. The tutorial can be accessed from any of the following methods.

- Search and find the "Govee Gaming Wall Light Installation Tutorial" video on our official YouTube channel.
- Scan the QR code pictured on the right.



Step 2

- Download Govee Home App. Connect the control box to the power adapter and plug into power.



Step 3

- In Govee Home App, add model "H6063" on the "Device" page and follow the in-app instructions step by step.

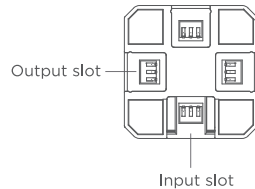
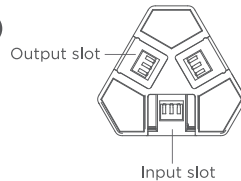
Before Installation:

- Plug each section into power to check whether each lights up.
- Clean and ensure the surface is totally dry before sticking the product on.
- It is recommended to use the cardboard included in the packaging to pre-design your layout on the wall.

During installing:

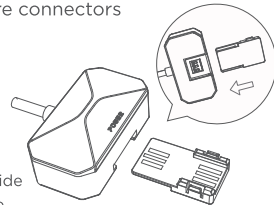
- Before installing the light sections, remove the transparent cases. Reinstall them after all light sections have been installed properly. Please note that the transparent cases on the triangle and square connectors cannot be removed.

1



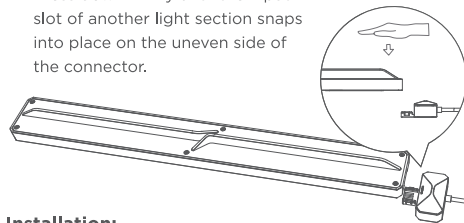
2

Hold the power supply end and slide the flat side of the connector into the slot.



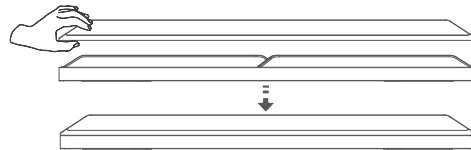
3

Press down firmly until the input slot of another light section snaps into place on the uneven side of the connector.



4

After installing all light sections, carefully attach all transparent cases (with built-in magnets) to the lights. Clean any visible smudges with the provided cloth.



After Installation:

- Follow the in-app instructions to complete calibrating, then enjoy your design!