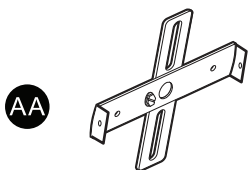


PACKAGE CONTENTS



HARDWARE CONTENTS Note: Hardware not shown actual size.



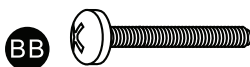
AA

Mounting Unit
x 1

DD

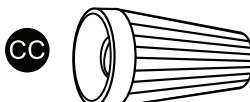


Cap nut
x 2



BB

Mounting Screw
x 2



CC

Wire Nuts
x 3

⚠ SAFETY INFORMATION

Please read and understand this entire manual before attempting to assemble, operate or install the product.

WARNING

- Turn off electricity at main fuse box (or circuit breaker box) before beginning installation by removing fuse (or switching off circuit breaker).
- Be careful not to damage or cut the wire insulation (covering) during fixture installation. Do not permit wires to contact any surface having a sharp edge. To do so may damage or cut the wire insulation, which could cause serious injury or death from electric shock.

CAUTION

- All electrical connections must be in agreement with local codes, ordinances or the national electric code (NEC). Contact your municipal building department to learn about your local codes, permits and/or inspections.
- Risk of fire – most dwellings built before 1985 have supply wire rated for 140°F/60°C. Consult a qualified electrician before installation.
- Do not connect this fixture to an electrical system that does not provide a means for equipment grounding. Never use a fixture in a two-wire system that is not grounded. If you are not sure your lighting system has a grounding means, do not attempt to install this fixture. Contact a qualified, licensed electrician for information with regards to proper grounding methods as required by the local electrical code in your area
- If a dimmer control switch is used with this fixture, obtain professional advice to determine the correct type and electrical rating required.

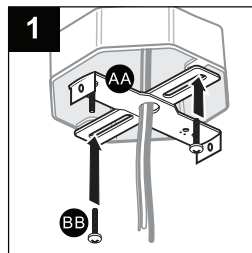
PREPARATION

Before beginning assembly, installation or operation of product, make sure all parts are present. Compare parts with package contents list and diagram on previous page. If any part is missing or damaged, do not attempt to assemble, install or operate the product. Contact customer service for replacement parts.

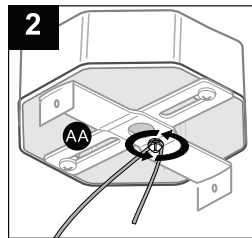
Tools Required for Assembly (not included): Screwdriver, Phillips Screwdriver, Pliers, Electrical Tape, Wire Cutters, Safety Glasses, Ladder, Wire Stripper

ASSEMBLY INSTRUCTIONS

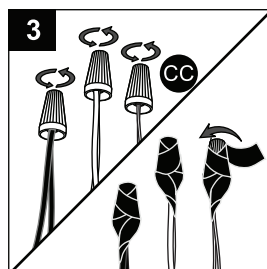
1. Attach mounting unit (AA) to the junction box (not included) with mounting screws (BB).



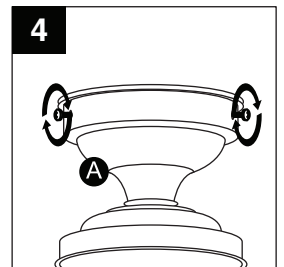
2. Connect the ground wire to the mounting unit (AA) by securing it with the ground screw.



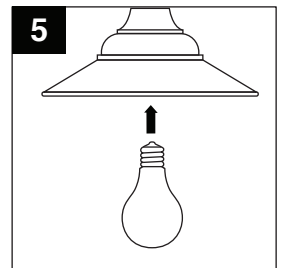
3. Connect the black to black (power), the white to white (neutral) and copper wire to ground wire with the wire nuts (CC) and secure with electrical tape (not included). Helpful Hint: If wires out of fixture are the same color, attach the side with markings or letters to black (positive) and the other to white (neutral).



4. Secure the light fixture (A) to the junction box by placing it over the mounting unit (AA) and securing it with set screws on the side.



5. Install the Medium Base 60 Watt max. bulb (B).



CARE AND MAINTENANCE

- To clean, turn power off and wipe with a damp, non-abrasive cloth.

TROUBLESHOOTING

PROBLEM	POSSIBLE CAUSE	CORRECTIVE ACTION
Light will not turn on.	1. No power.	1. Make sure power is on.
	2. Bad wiring.	2. Consult a certified electrician.
	3. Bad switch.	3. Consult a certified electrician.
Fuse blows or circuit trips when lamp is turned on.	Crossed wires or power wire is grounding out.	Consult a certified electrician.

5-YEAR LIMITED WARRANTY:

This PATRIOT LIGHTING® brand light fixture carries a Five (5) Year Limited Warranty to the original purchaser. If, during normal use, this PATRIOT LIGHTING® light fixture fails due to a defect in material and workmanship within five (5) years from the date of purchase, simply bring this light fixture with your original sales receipt back to your nearest MENARDS® retail store. At its discretion, PATRIOT LIGHTING® agrees to have the lighting fixture replaced with the same or similar PATRIOT LIGHTING® product free of charge, within the stated warranty period, when returned by the original purchaser with original sales receipt. Notwithstanding the foregoing, this limited warranty does not cover damage or failure caused by misuse or abuse including but not limited to improper installation, accident, unauthorized repair, maintenance, or modifications of the merchandise. This warranty: (1) excludes expendable parts including but not limited to light bulbs, batteries; (2) carries a 2-year finish warranty protecting finish against tarnishing, flaking, and discoloration; (3) shall be void if this lighting fixture is not installed in the U.S.A.; (4) does not cover products installed within three miles of saltwater coastline or any area prone to salt spray; and (5) does not cover any losses, labor, injuries to persons/property or costs. This warranty does not give you specific legal rights and you may have other rights, which vary from state to state. Be careful, it is recommended that installation be done by a qualified professional; the purchaser has sole responsibility for proper installation in compliance with all state and local code requirements. Seller's employees are not qualified to advise you on the use of the Merchandise. Any oral representation(s) made will not be binding on seller or its employees. The rights under this limited warranty are to the original purchaser of the Merchandise and may not be transferred to any subsequent owner. This limited warranty is in lieu of all warranties, expressed or implied including warranties or merchantability and fitness for a particular purpose. Seller shall not be liable for any special, incidental, or consequential damages. The sole exclusive remedy against the seller will be for the replacement of any defects as proceeded herein, as long as the seller is willing or able to replace this product or is willing to refund the purchase price as provided above.



Questions, problems, missing parts?

Before returning to your retailer, call our customer
Call customer service at 1-800-446-9092,
Monday - Friday 7:00 a.m.-5:00 p.m., PST

Printed in China

