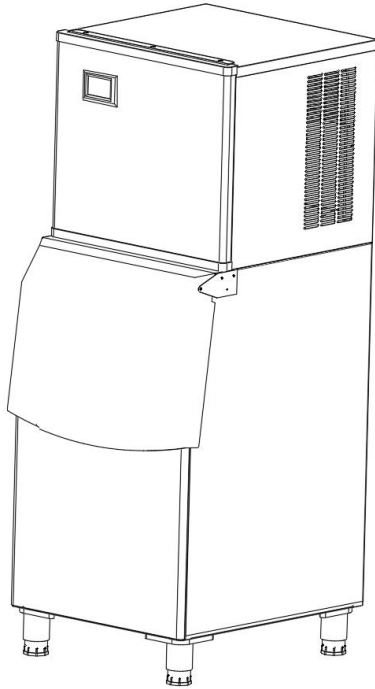


COMMERCIAL ICE MAKER INSTRUCTION MANUAL



The picture is for reference only. Please be subject to the actual product.

Please read the user manual carefully before using the appliance and keep it for future reference.

Email Address: support221@163.com

MADE IN CHINA

SAFETY PRECAUTION



Before using the appliance, please read the manual carefully. To reduce the risk of fire, electrical shock, or injury when using the appliance, follow these basic precautions, including:



DANGER:

- ▶ Read all instructions before using the ice-making machine.
- ▶ Plug into a grounded 3-prong outlet, do not remove grounding prong, do not use an adapter, and do not use an extension cord.
- ▶ It is recommended that a separate circuit, serving only your appliance be provided. Use an outlet that cannot be turned off by a switch.
- ▶ Never clean appliance parts with flammable fluids, as the fumes can create a fire hazard or cause an explosion. Also, do not store or use gasoline or other flammable vapors and liquids near this or any other appliance, as their fumes can also pose a fire risk or lead to an explosion.
- ▶ Before proceeding with cleaning and maintenance operations, make sure the power line of the unit is disconnected.
- ▶ Do not connect or disconnect the electric plug when your hands are wet.
- ▶ Unplug the appliance or disconnect power before cleaning or servicing. Failure to do so can result in electrical shock or death.
- ▶ Do not attempt to repair or replace any part of your appliance unless it is specifically recommended in this material. All other servicing should be referred to a qualified technician.
- ▶ To prevent a child from being entrapped, Keep out of reach of children and not in the vicinity of ice-making machine.
- ▶ Before you throw away your old ice-making machine, take off the door but leave the shelves in place so that children may not easily climb inside.
- ▶ Never allow children to operate, play with, or crawl inside the appliance.



Warning:

- ▶ This machine should be operated only by professionals or trained personnel, and it must be reliably connected to the ground to ensure safety.

- ▶ Use the power consistent with the one in the nameplate, and the bias voltage is less than $\pm 10\%$ of the rated voltage. The professionals must do the wiring;
- ▶ If the supply cord is damaged, it must be replaced by the manufacturer, its service agent or similarly qualified persons in order to avoid a hazard.;
- ▶ Before maintaining the machine, make sure you have cut off the power;
- ▶ Don't wet or sprinkle the liquid onto the plugs, motors, or other electrical parts to avoid electric shock;
- ▶ This appliance can be used by children aged from 8 years and above and persons with reduced physical, sensory or mental capabilities or lack of experience and knowledge if they have been given supervision or instruction concerning use of the appliance in a safe way and understand the hazards involved. Children shall not play with the appliance. Cleaning and user maintenance shall not be made by children without supervision.



FLAMMABLE REFRIGERANT

For your safety observe the following recommendations.

- ▶ This appliance contains a small quantity of R290 ice-making machine which is environmentally friendly, but flammable. It does not damage the ozone layer, nor does it increase the greenhouse effect.
- ▶ During transportation and installation, ensure that the tubing of the refrigerant circuit is not damaged.
- ▶ when handling, moving and use of the refrigerator or freezer to avoid either damaging the refrigerant tubing or increasing the risk of a leak.
- ▶ Avoid using or manipulating sharp objects near by the appliances.
- ▶ Leaking refrigerant can ignite and may damage the eyes.
- ▶ In the event any damage does occur, avoid exposure to open fires and any device which creates a spark. Disconnect the appliance from the mains power.
- ▶ Thoroughly ventilate the room in which the appliance is located for several minutes.
- ▶ Notify Customer Service for necessary action and advice.
- ▶ The ice-making machine quantity contained in this appliance is listed above in grams; it is also noted on the Rating Plate of the appliance.



▶ **WARNING: During using, service and disposal the appliance, please pay attention to symbol similar as left side, which is located on rear of appliance (rear panel or compressor) and with yellow or orange color. It's risk of fire warning symbol. There are flammable materials in refrigerant pipes and compressor. Please be far away fire source during using, service and disposal.**



Note:

- ▶ Please keep the water or other conductive liquids away from the machine;
- ▶ Don't stick clubs into the machine;
- ▶ During the movement of the machine, it should be carefully carried at an angle of less than 45 degrees.

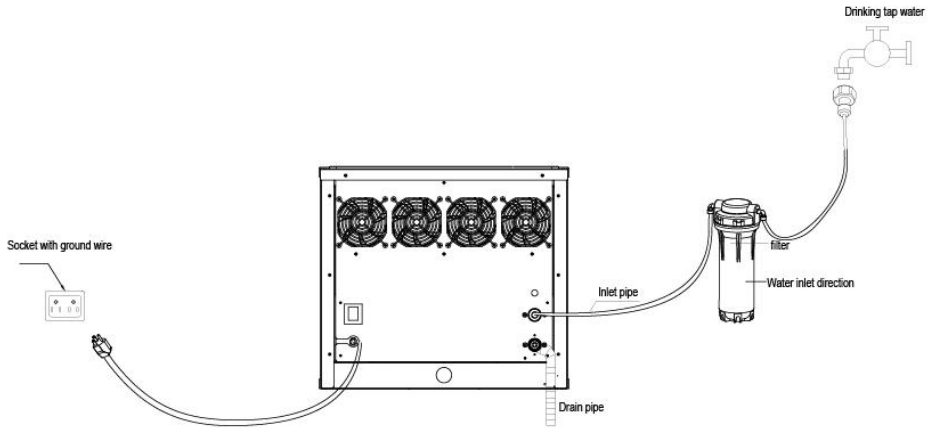
Prohibit water discharge pipe or water supply pipe from being bent so that the pipes are damaged and water leaks out from the pipes.

- ▶ The distance between the air outlets and the wall should be over 30 cm. Besides, keep good ventilation and ensure the machine is dry and clean.

QUICK USAGE INSTRUCTIONS

Installation Requirements:

1. The surface of the machine is covered with a metal protective film, which must be removed before use.
2. To extend the service life of the ice maker, it must be placed upright for at least 6 hours before being powered on.
3. The ice maker's host should be placed directly above the ice storage bin, ensuring that the left, right, and back sides of the ice maker host are aligned with the ice storage bin.
4. Pay attention to personal safety when placing the main unit of the ice maker. The main unit should not tilt more than 15 degrees and must be at least 30 cm away from obstacles.
5. Please install the water inlet and outlet pipes of the ice maker host according to the installation diagram located on the back of the host.



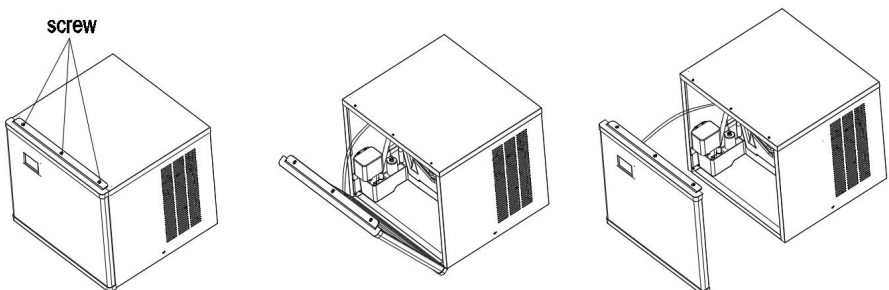
6. The ambient temperature for this product should not exceed 38°C , and the inlet water temperature should not exceed 32°C .

7. If an E04 alarm occurs, please check the ambient temperature and water temperature promptly and make corresponding adjustments.

8. Before use, the protective tape must be removed. The specific steps are as follows:

Step 1: Loosen the screws.

Step 2: Remove the tape.



CLEANING REQUIREMENTS:

1. Due to significant differences in water quality among different regions, it is recommended to connect the inlet to prevent impurities from depositing and blocking pipelines and water pumps.
2. Adding a water purification device to the water pipe may cause impurities to deposit and block the water path, which is not a product quality issue. Please clean the machine regularly.
3. It is recommended to clean the main water system (sink, water pump, water pipe) every 10-14 days.
4. Before manual cleaning mode, add the prepared cleaning agent (such as citric acid descaling agent) to the water tank. Clean for about 40 minutes.
1. Due to significant differences in water quality among different regions, it is recommended to connect the inlet to prevent impurities from depositing and blocking pipelines and water pumps.
2. Adding a water purification device to the water pipe may cause impurities to deposit and block the water path. This is not a product quality issue. Please clean the machine regularly.
3. It is recommended to clean the main water system (sink, water pump, water pipe) every 10-14 days.
4. Before initiating manual cleaning mode, add the prepared cleaning agent (such as a citric acid descaling agent) to the water tank. Then, clean for about 40 minutes.

Function Description:

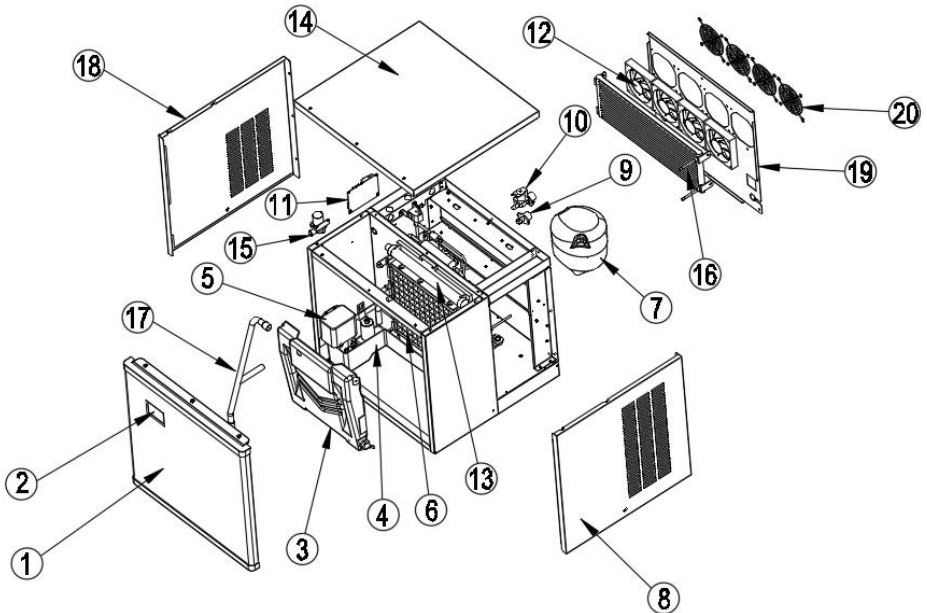
1. Ice Thickness Setting Function: Press the 'Reservation/ Addition' button twice in the startup state to enter the ice thickness adjustment mode. At this time, you can adjust the ice thickness according to the actual ice thickness by pressing the 'Reservation/ Addition' and 'Lighting/ Reduction' buttons. It is recommended that the ice thickness setting is not less than zero.
2. Cleaning Function: Press the 'Switch' button to turn the display OFF, then press the 'Clean/Set' button to enter the cleaning mode. The cleaning time in this mode is about 40 minutes.












SAVE THESE INSTRUCTIONS

BASIC STRUCTURE

Split type

No.	Name	No.	Name
1	Front panel	11	electric control panel
2	Control panel	12	Fan motor
3	Evaporator cover	13	spray pipe
4	Water storage tank	14	Top panel
5	Water pump	15	drain valve
6	Evaporator	16	condenser
7	Compressor	17	water pump outlet pipe
8	Right panel	18	Left panel
9	outfall	19	back shroud
10	water supply valve	20	fan guard



No.	Name	Picture	Purpose	Quantity
1	Manual		Machine operating instructions	1PCS
2	Adjustable feet		Assemble before using	4PCS
3	Assembled filter		Filter water	1SET
4	Mounted panel		Fix the filter	1PCS
5	Drain hose of ice bin		Drain	1PCS
6	Hoop		Fix drain hose	1PCS
7	Drain hose connector		Connect the drain hose and ice bin	1PCS
8	Ice spoon		Take ice	1PCS
9	Wrench		Loose the filter	1PCS
10	Accessory kit		If needed	1PCS
11	Water intake hose		Intake water	1PCS

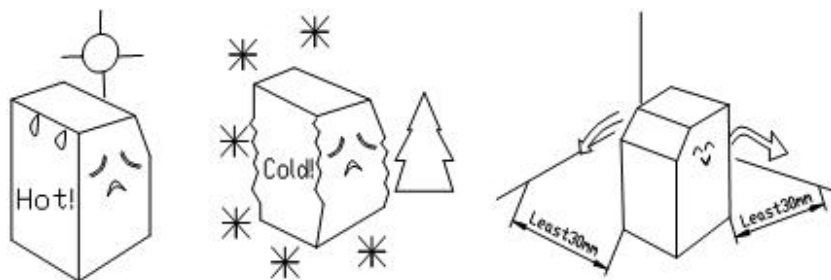
INSTALLATION

1. Open the case, move the machine to a appropriate location. Check the packing list and the contents, if they are different, please inquire your dealer.

2. Operating environment

A.Environment temperature:SN/N:10°C~38°C

Environment humidity: relative humidity $\leq 90\%$

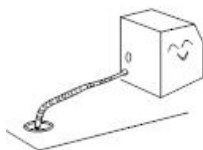


The distance between the air outlets and the wall should be over 30 cm. Besides, keep good ventilation and ensure the machine is dry and clean. The position to place the ice maker must be far away from the heat source, such as a bake oven, electric cooker, etc.

B. Water source is suitable for the sanitary standards, the water temperature and pressure is suitable. For getting the biggest efficiency, the inlet water temperature value should be 0.6~32°C, and the pressure should be 0.138~0.552MPa.




C. There should be a sewer. While working, some of the water will be discharged, so the sewer is necessary. Furthermore, the sewer must be kept unblocked.




POWER SUPPLY

1. Select the proper power supply according to the voltage and power on the nameplate.
2. Connect the power wire and supply, ensuring the yellow and green wires were connected with the ground wire firmly.

	<p style="text-align: center;">Caution:</p> <p>a. For safety, ensure the ground connection is in good condition. b. All the exterior wires and other appliances must confirm with national standard.</p>
---	---

3. If the voltage fluctuation range is extensive ($\pm 10\%$ over the rated voltage), it will cause many faults, such as the machine can't be started, the electronic control board is damaged, or the compressor being damaged. Therefore, you must use a suitable automatic voltage regulator.
4. Connect the water supply pipe. Remove the water supply pipe from the accessory bag and connect its two ends to the water supply valve and the water faucet. First, attach connector 1 to the water faucet. Then, join one end of the water supply pipe, which has steel balls, to connector 1 (ensure the end of the water supply pipe is attached before releasing it from connector 1). Next, connect the other end, which has a screw attachment, to the water supply valve. The valve also has a screw at its end; tighten the valve clockwise. After completing the installation, check the connections for leaks. You should connect the water pipes according to the diagram on the rear panel. The flow rate of condensate water is adjustable based on the customer's needs. (Note: Condensate flow is related to the speed of ice production.)

	<p>Warning: The water used to make edible ice block must be drinking water, furthermore, water's temperature must be among $0.6\sim 32^{\circ}\text{C}$ and the pressure among $0.138\sim 0.552\text{Mpa}$.</p>
---	--

5. Connect the water discharge pipe

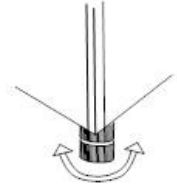
The water discharge pipe is situated at the back of the machine, extended pipe's end to the sewer.



Attention: In order to keep the water discharged smoothly, discharge pipe's lowest point must be above the highest point of the sewer, so to prevent the discharge water to flow back.

6. Keep the main body in level situation

Please keep the main body level to ensure the ice maker usually works. First, screw down the two adjustable legs into the machine's nuts. You can adjust the two legs properly if the main body is not level.



SERVICE INSTRUCTION

1. Operation Process

First, turn on the water faucet, power, and water supply valve. Fill the sink with water, then turn off the faucet when the sink is filled with an appropriate amount of water.

2. Ice-Making Process

After several minutes, the water pump starts working, and the water is pumped and flows through the ice mold evenly. Eventually, ice forms in the mold. When the ice thickness sensor detects the regulated thickness of ice, the ice begins to drop.

3. Ice-Drop Process

The water pump stops working, the water supply valve opens, and water flows into the sink. The heating valve is turned on, leading refrigerant gas into the ice mold. The ice root melts, and after about 2 minutes, the ice block drops into the ice cabinet. The falling ice block hits the retaining board (which triggers an inductive switch fixed on the right side of the retaining board). At this point, one cycle is complete, and a new ice-making cycle will start.

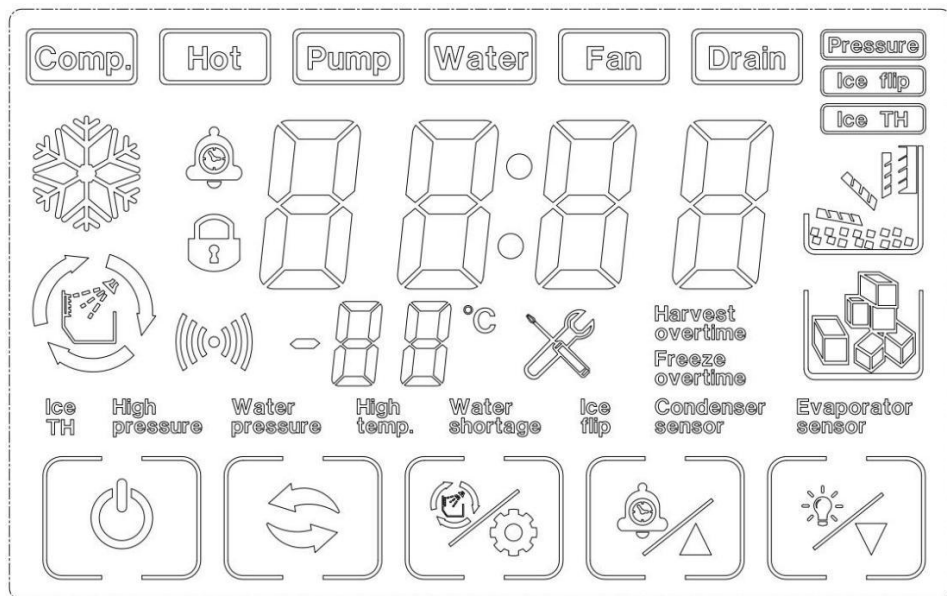
4.Auto-Stop

When the ice cabinet is filled with ice blocks, any additional falling ice blocks will be trapped between the retaining board and the evaporator. The retaining board will continue to open and cannot return to its original position. After several seconds, the ice maker will automatically stop working. Once the ice block trapped between the retaining board and evaporator is removed, the retaining board will return to its original position, and the ice maker will restart to make more ice.

5.Running Check

- A. During the ice-making process, a sudden interruption of the water supply can prevent the sink from being filled with the appropriate amount of water. The ice maker will enter a standby mode and not produce ice as usual. Once the water supply is restored and the machine is restarted, it can resume normal operation.
- B. The fan motor for the condenser is temperature-controlled. When the condenser's surface temperature is low, the fan motor will stop to save power. When the surface temperature rises, the fan motor will work again, so the fan motor operates intermittently during the ice-making process.
- C. When operating the commercial ice maker in a low ambient temperature, the ice-drop process may be delayed. If this happens three times consecutively, the machine will stop automatically, and the red light in the electrical box will alternately flicker with the other four lights. After restarting the machine, it will return to normal operation. Therefore, we suggest not using the machine in low ambient temperatures.

LCD FULL PAGE DISPLAY



7. Buttons on display board



press 3 seconds to turn off the machine under turn on status

press on/off button to turn on the machine under turn off status press the on/off

button to exit setting under ice thickness setting and filling water adjust status



Switch the ice making program



Press to clean status under machine turn off status



↙ **+/reservation button:**

press to ice thickness adjust under pressure equilibrium, making ice, unload ice, ice full status.

click to increase 1, long press the button to increase continuously under ice thickness adjust status.

click to reservation time setting status under turn off status.



↙ **-/light button:**

click to decrease 1, long press the button to decrease continuously under ice thickness adjust status

Instruction: when the machine is in the “lack-water protection” condition, it can restart automatically after the sink is filled with appropriate water. If other faults cause the machine to stop, press the start button or supply power again after forty-five minutes, and the machine will start again.

DAILY CLEANING AND MAINTENANCE

Clean

Warning

Before cleaning or maintaining the ice maker, unplug the ice maker from the power supply network. .

It is strictly prohibited to flush the ice maker directly with water sprayer.

Attention

When using neutral or sodium hypochlorite solutions, be sure to read and understand the accompanying instructions to avoid potential health problems.

[a]Ice maker and refrigerator housing

Wipe the ice maker's shell with a clean, soft cloth at least once a week, and wipe grease and dirt with a damp cloth containing a neutral cleaner.

Attention

Do not use a hard brush, wire brush, do not use detergent powder, gasoline, banana water, acetone and other organic solutions, do not use boiling water or containing strong acids, alkali cleaning agents to clean the ice machine.

Please do not wash directly with water when cleaning, so as not to affect the insulation of electrical appliances.

[b]Ice machine cleaning and disinfection (recommended more than 2 times per month)

Note: Some areas may need to be cleaned and disinfected more frequently due to different water quality.

Attention

Before cleaning, at the end of the ice machine cycle, all the ice cubes slide behind, shut down, open the front panel, and remove all the ice cubes in the ice machine and ice storage bucket. .

Do not use tools to peel the ice from the ice mold, otherwise it may cause damage to the ice mold.

Do not use any liquid containing alcohol to clean or disinfect the ice machine, or it may cause cracks in the plastic parts.

Attention

During the cleaning and disinfection process, please pay attention to protection, wear goggles and gloves, if the cleaning agent or disinfectant on the skin or eyes may cause inflammation. In case of accidental contamination, please follow the precautions of the medicine.

During cleaning, attention should be paid to ventilation. Chlorine gas produced by disinfectants is a health hazard. Please handle it in a ventilated place.

Cleaning and disinfection sequence

Please clean and disinfect in the following order.

order of use	Pharmaceutical species	use
1	Citric acid detergent (dilution ratio refer to detergent instructions)	rinse
2	Disinfectant (dilution ratio refer to disinfectant instructions)	sterilie

Cleaning and disinfection procedures

Daily cleaning and maintenance methods(10-15 days)

1. Click the "OFF" button on the display screen after the ice maker finishes all the ice sliding. The display screen displays "off". Open the ice bucket door and remove all the ice.



2. Open the front panel, put the dissolved detergent (or disinfectant) into the water storage tank, and then close the front panel.



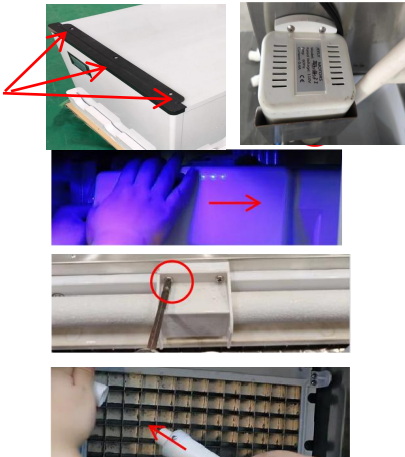
3. In the "off" state, press the "%". When you see that the key flashes, release it and enter the cleaning mode.

4. After entering the cleaning procedure, the equipment will follow the instructions: (1) Water inlet →(2) cleaning for 15 minutes →(3) drainage for 1 minute →(4) Water inlet →(5) rinsing for 3 minutes →(6) drainage → Repeat steps (4) to (6) for 5 times → End. After completing the above steps, the cleaning procedure is over.

Note: Detergent (or disinfectant) should be adjusted according to its own use instructions. After entering the cleaning program, it will run automatically without operation. Do not add disinfectant and cleaning agent to the sink at the same time.

Note: If cleaning and disinfecting steps are performed at the same time, please follow the above steps twice.

Deep cleaning and maintenance methods(2 months)



Step 1: Turn off the switch and unplug the power cord.

Step 2: Remove the top three screws of the door frame

Step 3: Open the door panel and flip to the top of the machine

Step 4: Remove the plug under the water storage tank and drain the water from the water storage tank.

Step 5: Remove evaporator cover.(Pry open the evaporator cover slightly to the right.)

Step 6: Remove water pipe retaining cover and water pipe



Step 7: Remove the screw top of the water pipe and take out the inner and outer water pipes.



Step 8: Use a small brush to clean the inside and outside walls of the pipe.



Step 9: Use a small brush to clean the inside and outside of the evaporator cover.



Step 10: Remove the screws that secure the water pump, and remove the pump water pipe.



Step 11: Remove the two screws from the water level sensor.



Step 12: Use a small brush to clean the bottom of the pump.



Step 13: Use a small brush to clean under the water level sensor.



Step 14: Use a clean, soft cloth to clean the inside surface of the ice maker, the surface of the evaporator, the surface of the sink, and the inside of the ice bucket.



install

Step 1: Install the water pipe and tighten the screws at both ends of the water pipe (note: that the direction of the water outlet hole of the inner water pipe is opposite to that of the outer water pipe).




Step 3: Install water pipe retaining cover, water pump, water level sensor.




Step 4: Close the front pane, Tighten the two side screws.



Note: After the ice machine is cleaned, the pre-made 5 sheets of ice should not be eaten. Cleaning and maintenance cycle please adjust according to the local water quality, recommended Daily cleaning and maintenance methods(10-15 days), Deep cleaning and maintenance methods(2 months), if there is serious scale, please first follow the deep maintenance cleaning, and check the filter condition.

TROUBLE SHOOTING

LED Panel	LCD Panel	Possible Cause	Solution
E01	 Ice flip	<ol style="list-style-type: none"> 1. De-icing plate is missing or misplaced; 2. The polarity of the magnetic induction element is reversed; 3. Abnormal ice full switch; 	<ol style="list-style-type: none"> 1. Reset the ice removal plate; 2. Replace the ice removal plate/full ice sensor; 3. Contact after-sales service /visual trouble guidance/confirm the fault point;
E03	 Harvest overtime	<ol style="list-style-type: none"> 1. The ice cube setting is too thin; 2. The water tank is insufficient; 3. The ambient temperature is too low; 4. De-icing solenoid valve failure; 	<ol style="list-style-type: none"> 1. Check and set the water thickness parameters (Recommended gears 0-2) 2. Check the water inlet system, or if the water sufficient; 3. Use membrane materials to block the ventilation inlet area proportionally; 4. Check if the ice is stuck; 5. Check if the machine is placed horizontally; 6. Contact after-sales/video guidance/confirm the point of failure;
E04	 High Temp.	<ol style="list-style-type: none"> 1. The ambient temperature is too high; 2. The cooling effect of the condensing system is poor; 3. The cooling fan is damaged; 	<ol style="list-style-type: none"> 1. Improve environmental ventilation or displacement, or turn on air conditioning; 2. Clean the condenser; 3. The distance between the machine and the obstruction should be at least 30cm; 4. Check if the fan is working ;

			5. Contact after-sales /confirm the point of failure;
E05	 Water Pressure	1. No water supply; 2. The water supply pressure is too low, 3. Water tank leaks; 4. The water level sensor fails; 5. Malfunction of the inlet valve;	1. Check the water source or whether the water filter is blocked; 2. Check the water supply pressure or whether the water filter is blocked; 3. Check whether the bottle cap at the bottom of the water tank is tightened and sealed; 4. Check for scale on the water level switch ; 5.Contact after-sales/video guidance/confirm the point of failure ;
E06	 High Pressure	1. The condenser temperature is too high, 2. The refrigeration system is blocked; 3. Pressure switch failure; 4. The main control board is abnormal;,	1. Improve environmental ventilation or displacement,or tum on air conditioning; 2. Check the condensation heat dissipation system; 3. Contact after-sales/video guidance/confirm the point of failure;
E11		1. The ring temperature is too high; 2. Poor dissipation effect of the condensing system; 3. Leakage of refrigeration system;	1.Check if the water pump is started and running 2.Clean the condenser; 3.The distance between the machine and the obstruction should be at least 30cm; 4. Contact after-sales/video guidance/confirm the point of failure ;

TECHNICAL PARAMETER AND WIRING DIAGRAM

- A. Technology parameters are on the nameplate.
- B. The electrical schematic diagram is on the inner side of the board .

AFTER SALE SERVICE

- 1.If your product breaks down or has any problems after purchase, please contact us, you can always contact our customer service by email at support221@163.com.
- 2.Regarding any product problems or issues you encounter, our customer service will guide you through the entire service process. We reserves the right to re-inspect damaged or returned products.
- 3.If you have any warranty questions, please contact us at

Email Address: support221@163.com