

Quick Start Guide

Smart Sensor Starter Kit

Setup Video

• Hub

Scan QR code or visit
<https://www.tp-link.com/support/setup-video/#smart-hub>



• Sensor

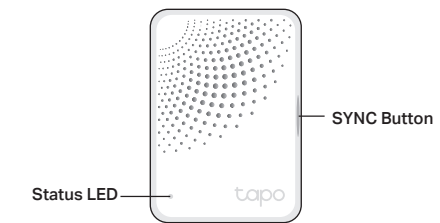
Scan QR code or visit
<https://www.tp-link.com/support/setup-video/#smart-sensors>



01/ Power Up Your Device

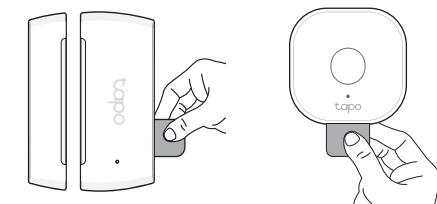
1. Plug in your hub and wait until the LED blinks orange and blue.

Note: If the LED is not blinking orange and blue, press and hold the SYNC button for 5 seconds to reset the hub.



2. Remove the battery insulation tab to power up your sensor. The LED should begin to blink.

Note: If the LED is not blinking, refer to the reverse side for reset instructions.



02/ Set Up Your Device

1. Get the Tapo app from the App Store or Google Play, and log in.



2. Tap the ⊕ button in the app and select **Hubs**. Follow the in-app instructions to set up and connect your Tapo **sensors** or more to the hub.

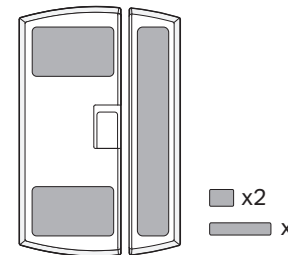
Note: You can also tap the ⊕ button. Select **Sensors** and then your model, and choose the added hub for your sensors.

03/ Mount Your Sensor *The installation height should not be higher than 6.56 ft (2 m).

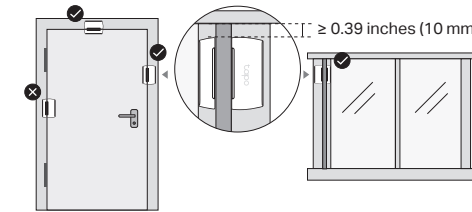


For Contact Sensor

1. Stick the included adhesives on the sensor and magnet.



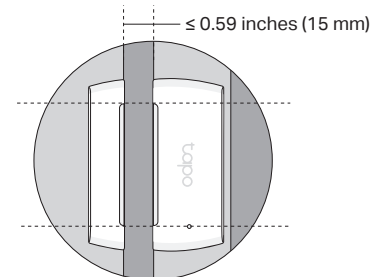
2. Choose where you'd like to install the sensor (but don't attach it yet). Place the magnet near the edge of the door or window that moves.



Note:
 • Leave at least 0.39 inches (10 mm) of space so you can open the battery compartment.

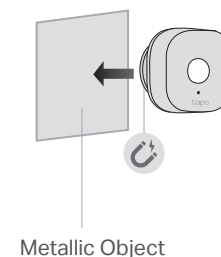
3. Align the magnet and sensor with no more than 0.59 inches (15 mm) between them when the door or window is closed.

Peel the backing from the adhesive and press the sensor and magnet into place.

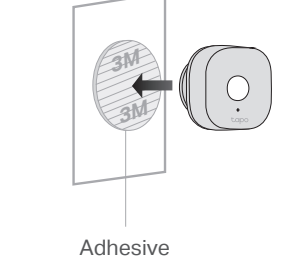


For Motion Sensor

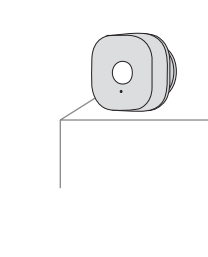
Option 1:
 Magnetically attach to metallic objects



Option 2:
 Stick to a clean wall with included adhesive



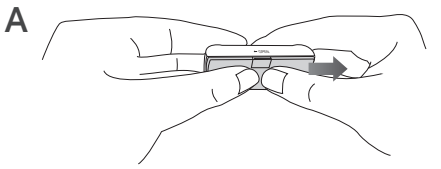
Option 3:
 Place it on a shelf or table



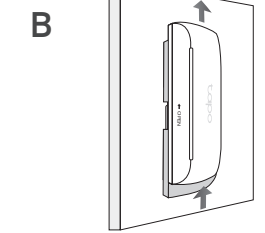
? How to replace the battery

For Contact Sensor (Battery type: CR2032)

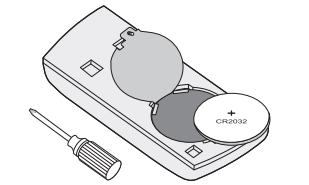
1. Remove the cover of your sensor.



OR

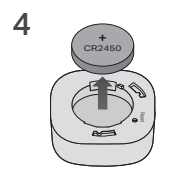
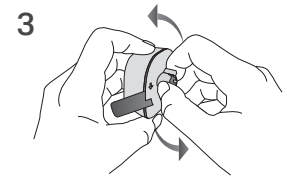
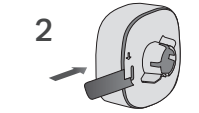
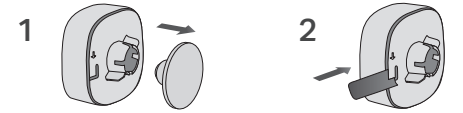


2. Use a screwdriver to open the battery cover.

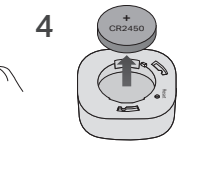
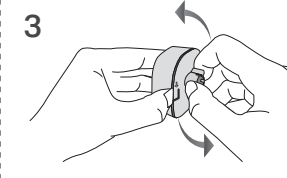
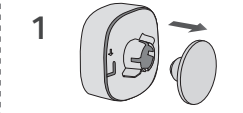


For Motion Sensor (Battery type: CR2450)

Option 1: With a Shim



Option 2: By Hand

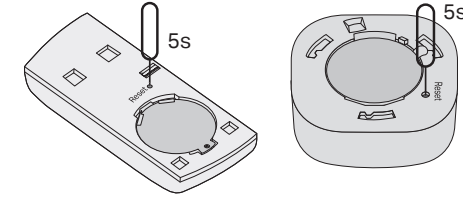


Support

For technical support, warranty and more, please visit <https://www.tapo.com/support/>

? How to reset your sensor

After removing the cover, use a pin to press and hold the Reset button for 5 seconds until the front LED starts blinking.



! WARNING

- **INGESTION HAZARD:** This product contains a button cell or coin battery.
- **DEATH** or serious injury can occur if ingested.
- A swallowed button cell or coin battery can cause **Internal Chemical Burns** in as little as **2 hours**.
- **KEEP** new and used batteries **OUT OF REACH** of **CHILDREN**
- **Seek immediate medical attention** if a battery is suspected to be swallowed or inserted inside any part of the body.



Explanation of the symbol on the product
Warning! This product contains a button cell or coin battery. Avoid ingestion hazard. Death or serious injury can occur if ingested.

CAUTION!
Risk of explosion if the battery is replaced by an incorrect type.

CAUTION!
Avoid replacement of a battery with an incorrect type that can defeat a safeguard.
Avoid disposal of a battery into fire or a hot oven, or mechanically crushing or cutting of a battery, that can result in an explosion.
Do not leave a battery in an extremely high temperature surrounding environment that can result in an explosion or the leakage of flammable liquid or gas; Do not leave a battery subjected to extremely low air pressure that may result in an explosion or the leakage of flammable liquid or gas.

CAUTION: Do not ingest battery, Chemical Burn Hazard
This product contains a coin / button cell battery. If the coin / button cell battery is swallowed, it can cause severe internal burns in just 2 hours and can lead to death.
Keep new and used batteries away from children.
If the battery compartment does not close securely, stop using the product and keep it away from children.
If you think batteries might have been swallowed or placed inside any part of the body, seek immediate medical attention.

- Remove and immediately recycle or dispose of used batteries according to local regulations and keep away from children. Do NOT dispose of batteries in household trash or incinerate.
- Even used batteries may cause severe injury or death.
- Call a local poison control center for treatment information.
- Tapo T110 includes button/coin cell batteries of type CR2032; Tapo T100 includes button/coin cell batteries of type CR2450.
- The nominal voltage of the button/coin cell batteries is +3V.
- Non-rechargeable batteries are not to be recharged.
- Do not force discharge, recharge, disassemble, heat above 60°C/140°F or incinerate. Doing so may result in injury due to venting, leakage or explosion resulting in chemical burns.
Ensure the batteries are installed correctly according to polarity (+ and -).
Do not mix old and new batteries, different brands or types of batteries, such as alkaline, carbon-zinc, or rechargeable batteries.
Remove and immediately recycle or dispose of batteries from equipment not used for an extended period of time according to local regulations.
Always completely secure the battery compartment. If the battery compartment does not close securely, stop using the product, remove the batteries, and keep them away from children.

- Safety Information**
- Do not install in a socket facing downward.
 - Keep the device away from water, fire, humidity or hot environments.
 - Do not attempt to disassemble, repair, or modify the device. If you need service, please contact us.
 - Do not use the device where wireless devices are not allowed.
 - The socket-outlet shall be installed near the equipment and shall be easily accessible.

Please read and follow the above safety information when operating the device. We cannot guarantee that no accidents or damage will occur due to improper use of the device. Please use this product with care and operate at your own risk.
TP-Link hereby declares that the device is in compliance with the essential requirements and other relevant provisions of directives 2014/53/EU, 2011/65/EU and (EU) 2015/863.
The original EU declaration of conformity may be found at <https://www.tapo.com/en/support/ce/>
TP-Link hereby declares that the device is in compliance with the essential requirements and other relevant provisions of the Radio Equipment Regulations 2017.
The original UK declaration of conformity may be found at <https://www.tapo.com/support/ukca/>

Tapo H100 for EU/UK region:
Operating Frequency / Nominal Operating Frequency / Max Output Power:
2400MHz~2483.5MHz / 20dBm
863~865MHz / 863.35MHz / 25mW (e.r.p)
863~865MHz / 864.35MHz / 25mW (e.r.p)
868~868.6MHz / 868.35MHz / 25mW (e.r.p)

Tapo T100/T110 for EU/UK region:
Operating Frequency / Nominal Operating Frequency / Max Output Power:
863~865MHz / 863.35MHz / 25mW (e.r.p)
863~865MHz / 864.35MHz / 25mW (e.r.p)
868~868.6MHz / 868.35MHz / 25mW (e.r.p)

