

Quick Setup Guide

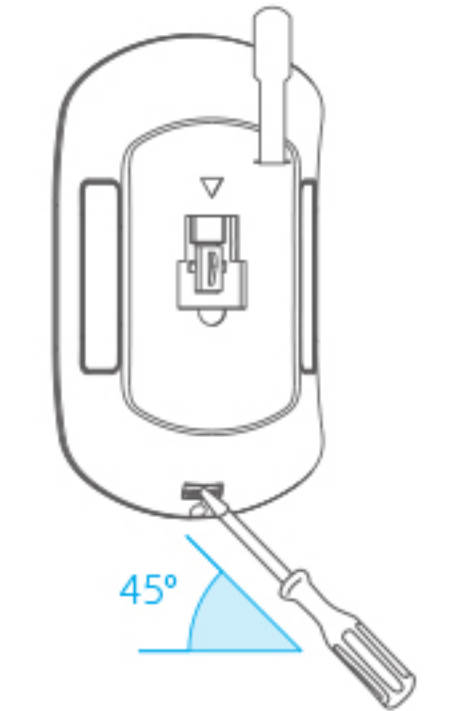
Motion Sensor | PIR3-FC



🔍 | BroadLink International
For more promotions and supports

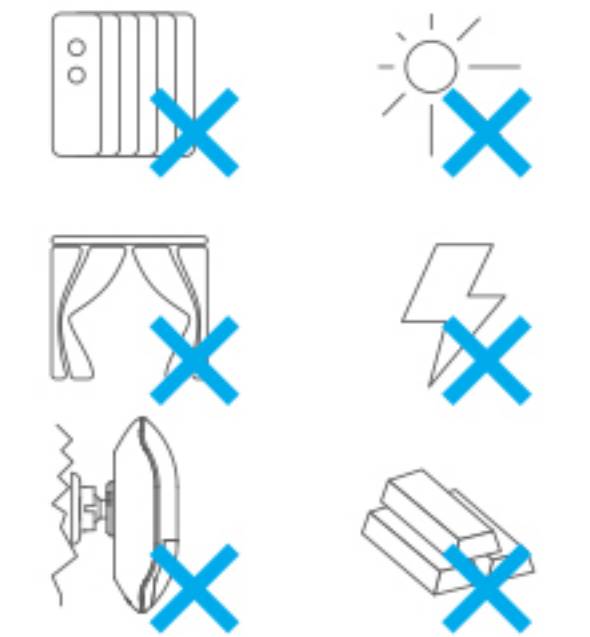


Change Battery



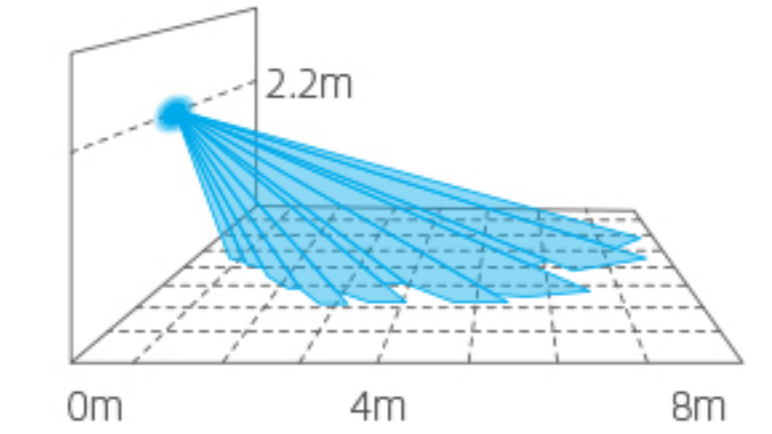
- Unscrew the cover from bottom.
- Use a flatted screwdriver to push the buckle from 45° to open the cover.
- **Battery must be changed asap if "Low battery alert" shows on phone, otherwise the device may stop working unexpectedly.**

Important Notice



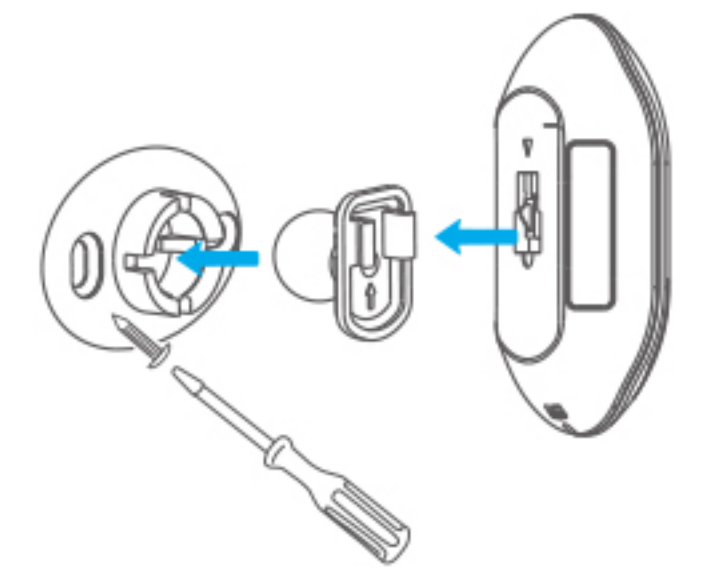
- **DO NOT** point to heating, cooling or ventilation source.
- **DO NOT** point to sunlight.
- **DO NOT** place it near curtain.
- Keep away from high voltage cables.
- Install on firm and stable base.
- Keep away from metal coverage.

Mounting



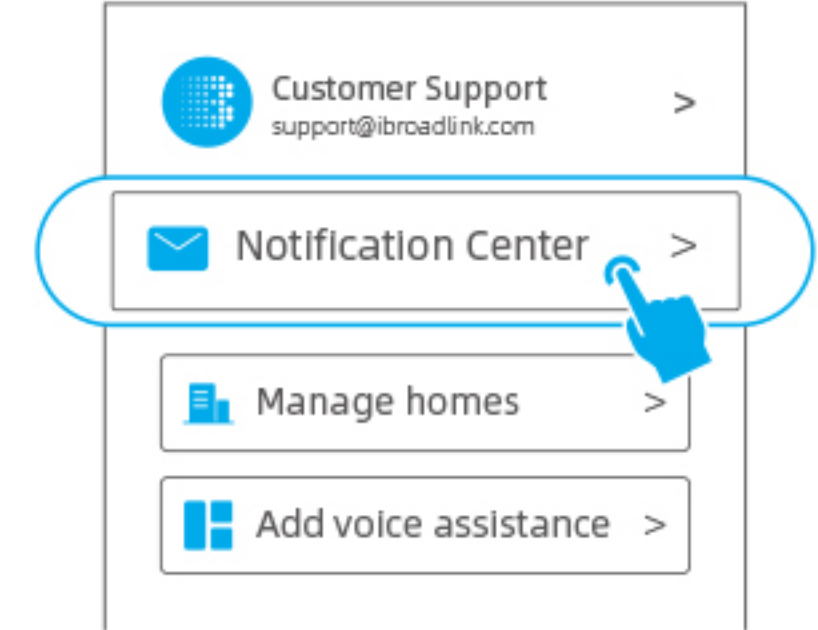
- Recommended installation height: 1.8-2.2m (5.9-7.2 ft)
- Max detection angle: 120°
- Detection range: 1-8m (3.3-26.2ft)
- **You may need to adjust the angle on mounting rack and test detection after setup to get the best coverage.**

Installation



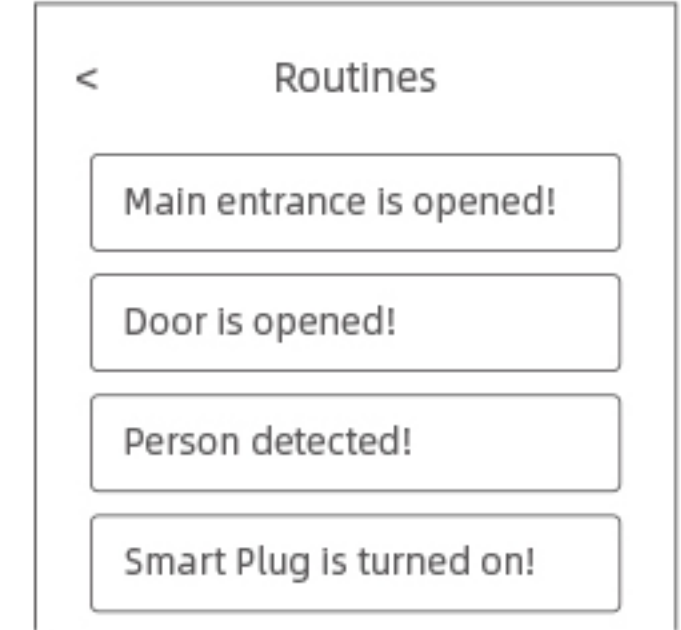
- Insert the ball on mounting rack into the holder of mounting pad.
- Fix the mounting rack on mounting slot with right direction and make sure the anti-tampering switch is firmly pressed (arrows on sensor and mounting rack must point to each other)

Manage Notifications



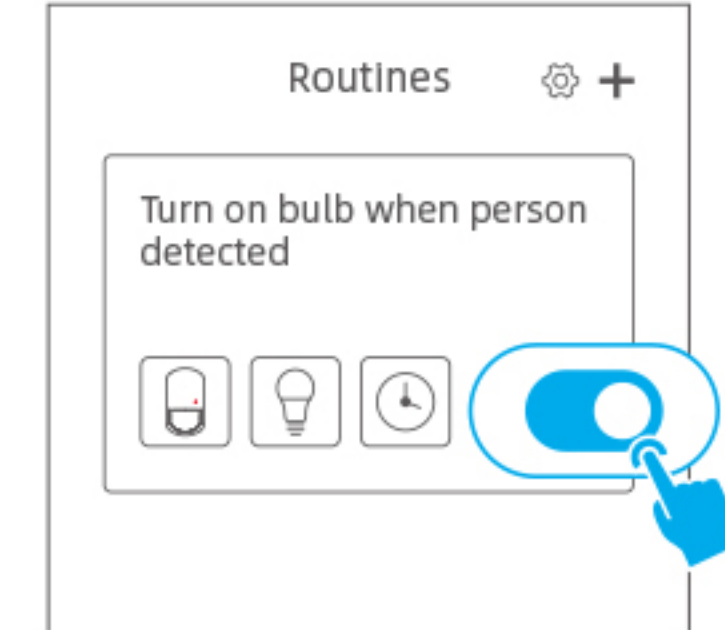
- The notifications will be also displayed in routine list for easier management and editing.
- Go to "Me" > "Notification Center" to view notification history
- If you add "Push notification on phone" as an action in routine, you will also be notified when the routine is executed and check the history in "Notification Center".

Set Alarm Notifications



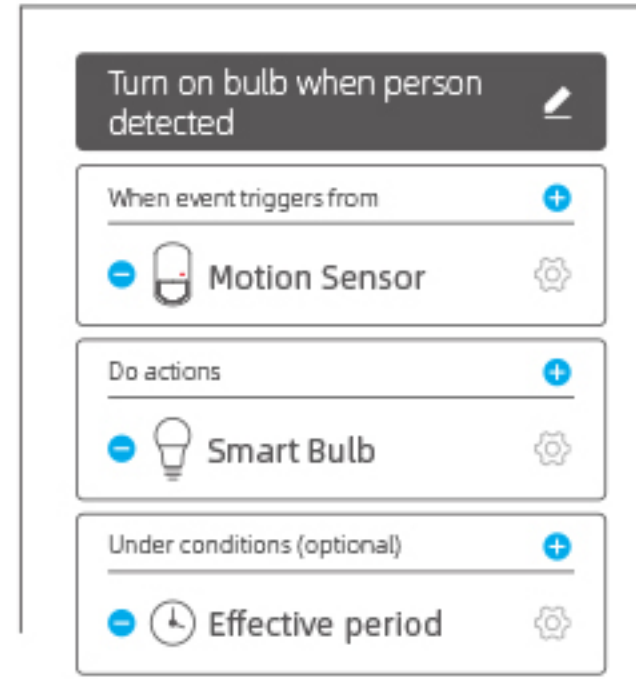
- Tap "... " at top right and enter "Notification setting".
- Customize the text of notification for certain status. When the event is triggered, you will receive a notification on phone without opening the APP.

Set Routines



- You can change the background picture and give a name for the routine, then save it to enable the routine.
- You can tap the toggle in routine list to disable/enable it.

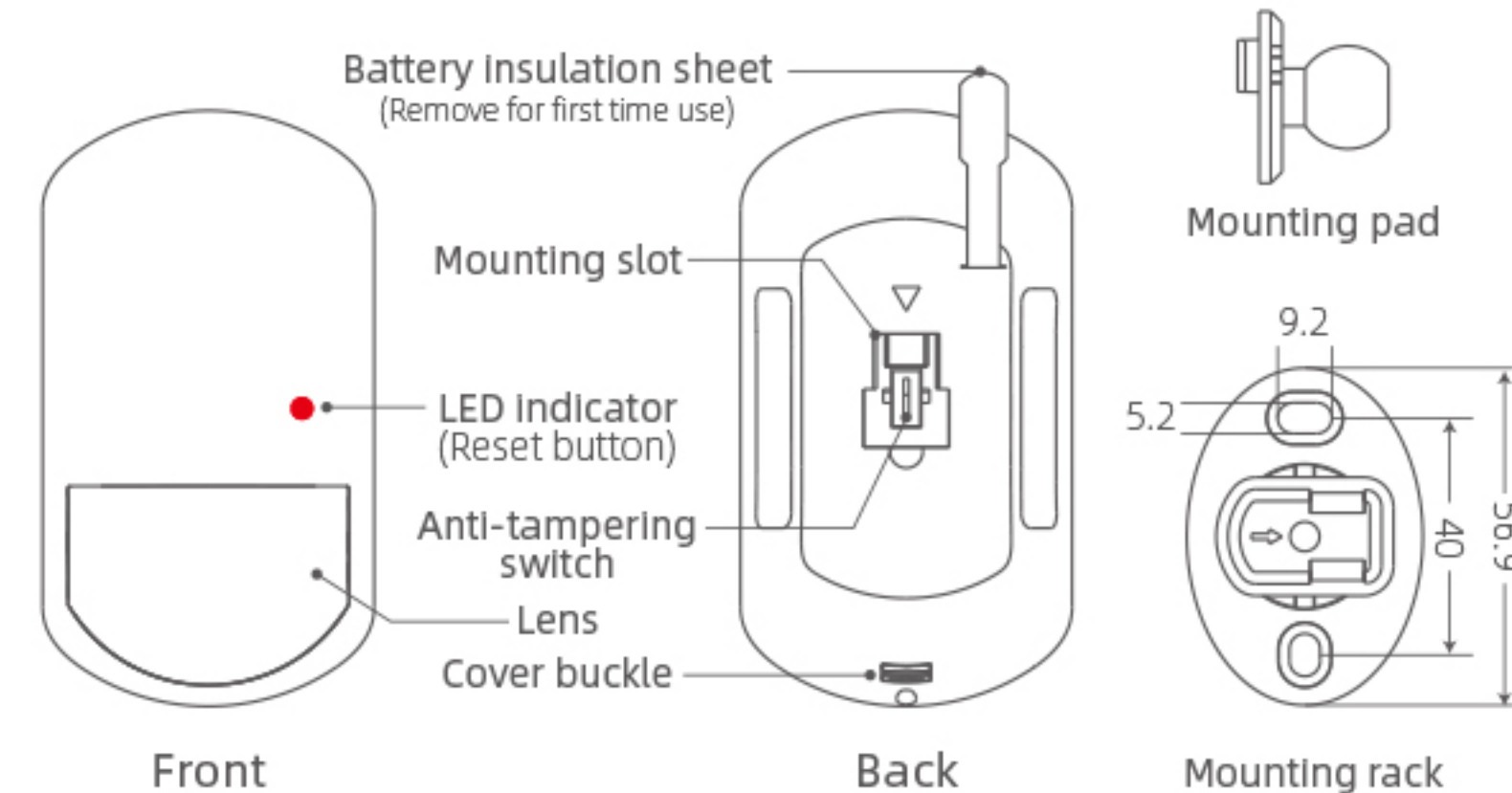
Set Routines



- **Make sure you have controllable devices (ex. smart plug).**
- Tap "Routines" tab at bottom in APP's home page and tap "+" to add a routine.
- Tap "+" buttons to add triggers, actions and conditions (support multiple for each) to create your e.



Overview



Specifications

Connectivity: 2.4GHz wireless
 Occupation keep time: 2 minutes
 Battery: CR123A
 Est. battery life: 1 year
 Operating environment: -10°C~55°C, ≤90%RH
 Dimensions: 107.93x60.2x35.1 mm(4.25x2.37x1.38 in.)

ATTENTION

DO NOT power off hub during use of sensors - It may cause higher battery consumption

Indications

Status	Indication
Flashes 5 times/sec	The device is in pairing mode The pairing mode will last only for 15s for power saving. Please finish pairing in 15s, otherwise a manual reset is required.
Flashes once	Motion detected (occupied), or Anti-tampering switch is triggered (sensor might be removed)

Reset for Pairing Mode

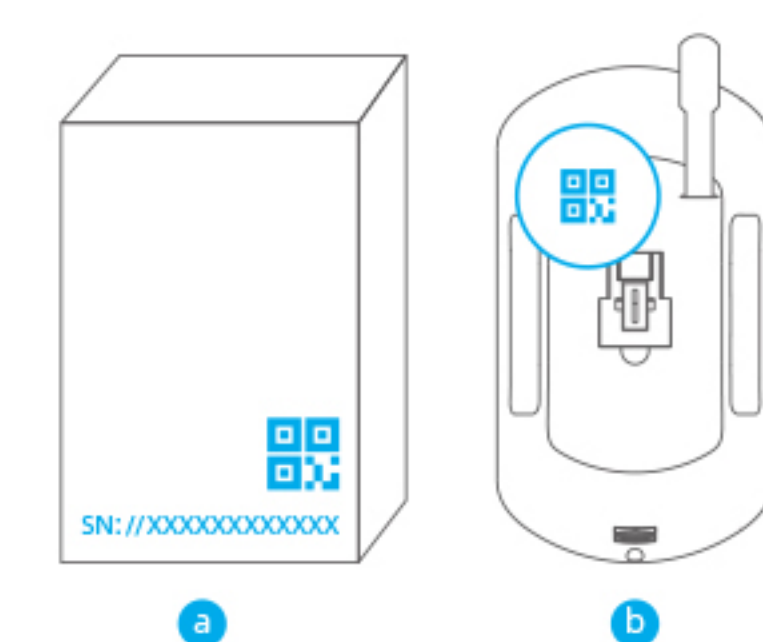
- The device will be in pairing mode by default in first time use (when the battery insulation sheet is pulled out).
- In case it is not in pairing mode, press and hold the LED indicator for 5s until it flashes 5 times/sec

STEP 1 What's required

- Internet
- Wi-Fi Router
- Phone
- S3 Hub
- Motion sensor

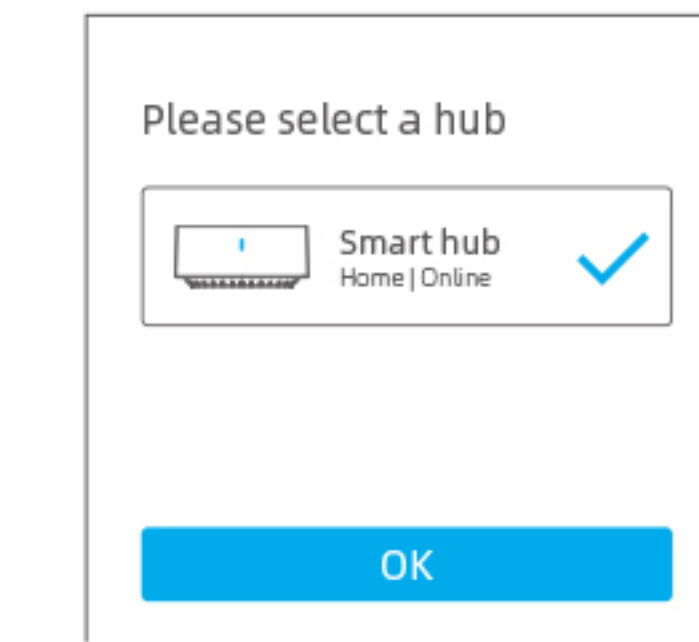
- A smartphone or tablet running iOS 9.0 / Android™ 4.1 or higher with BroadLink APP.
- A 2.4GHz Wi-Fi network with Internet connection.
- S3 hub already configured in APP (Motion sensor requires the hub to be installed and kept online during setup and use).**

STEP 2 Scan QR Code



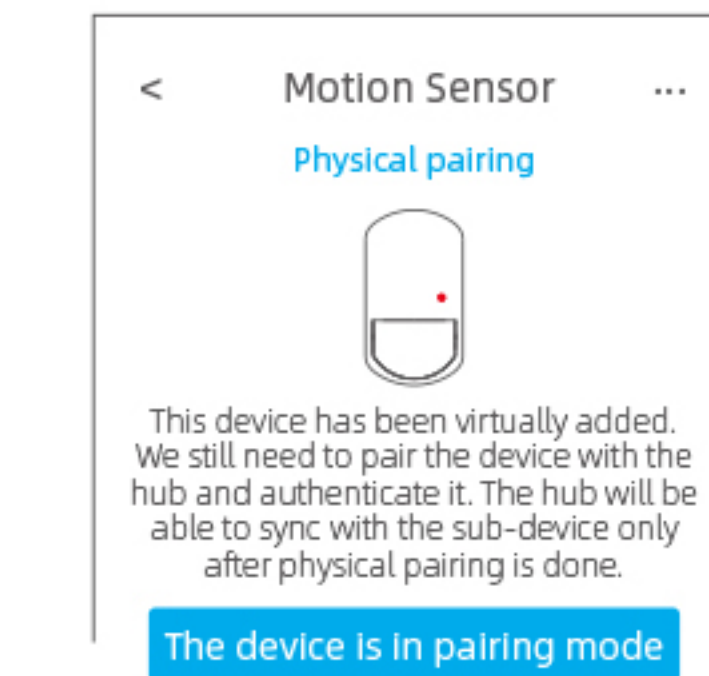
- Open BroadLink APP, tap "+" button and then "Scan QR code".
- Scan the QR code or input SN from:
 - Label on package
 - Printed on back cover
- * When you input SN manually, remember to input all characters (SN://XXXXXXXXXXXX) including "SN://".**

STEP 3 Add Sensor Virtually



- After scanning, confirm the product information with the picture and name shown in the APP.
- Choose a hub for the sensor. Then choose a room and rename the sensor (if needed).
- The sensor will be added to the hub as a sub-device and tap "I know it" to proceed.

STEP 4 Pair Sensor Physically

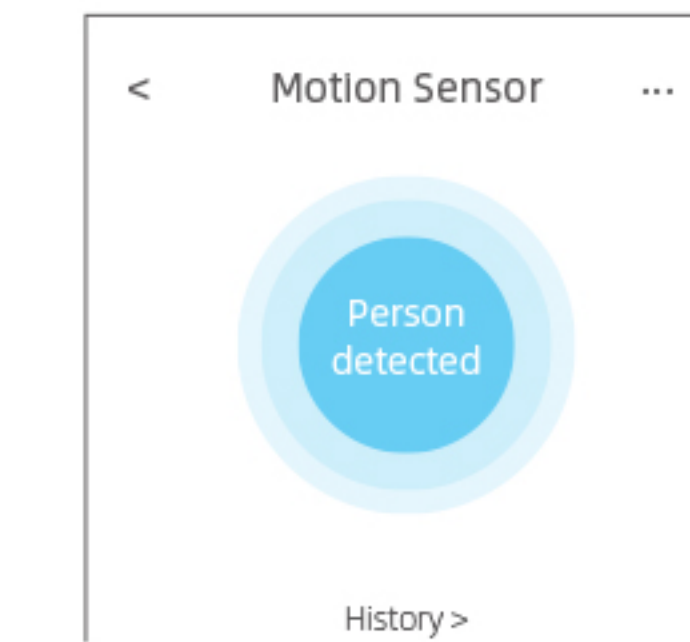


- Tap "Use device now" to proceed.
- Remove the battery insulation sheet (for first time use) or reset device and make sure the sensor is in pairing mode (refer to "Indications").
- Tap "The device is in pairing mode" to proceed and complete pairing.



The pairing mode will only last for 15s.

STEP 5 View Status



- You can view the "Nobody/Person detected" status in device list or device page.
- The device page also shows the state change history.
- You can tap "History" to view all history records.



Access product tutorials and manuals from



Official Website



Facebook



YouTube Channel

Having Issues of using the product? Please reach us from the following options and we are always be ready to help



Global Hotline

5 x 24h Mon-Fri

Europe +33-4-81-68-12-80
 Asia Pacific +61-2-4067-5400
 North America +1-404-476-4482
 Latin America +55-11-4118-4618



In-APP Feedback



support@ibroadlink.com