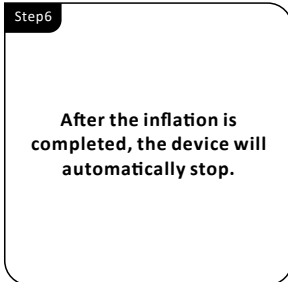
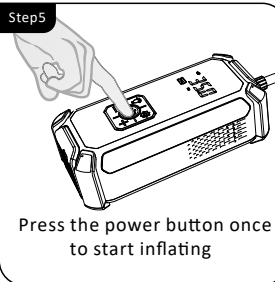
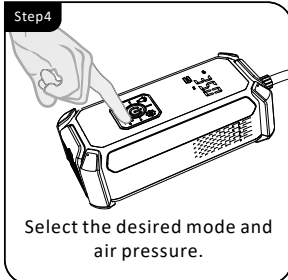
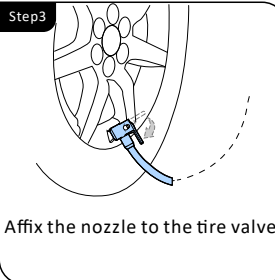
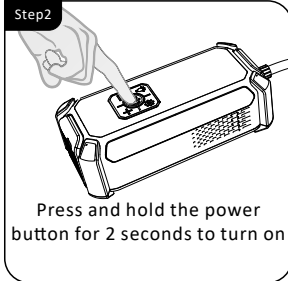
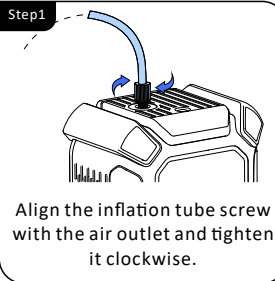


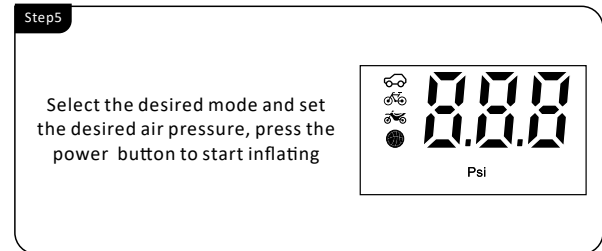
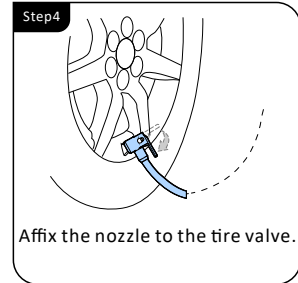
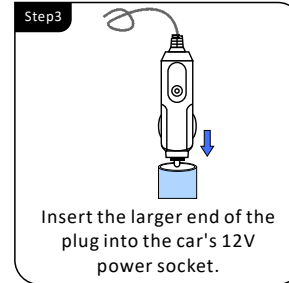
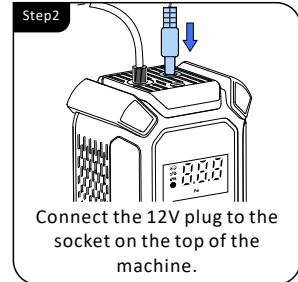
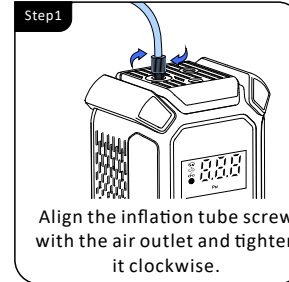
Quick Start Guide

Battery-powered use:



Powered by DC cigarette lighter:

When the battery runs out and you just forget to charge it.



Quick Start Guide

How to inflate your bike

The first thing to determine if your bike is a French valve, the following picture will tell the difference:

Presta valve

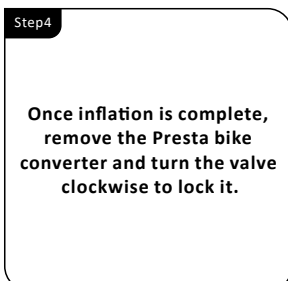
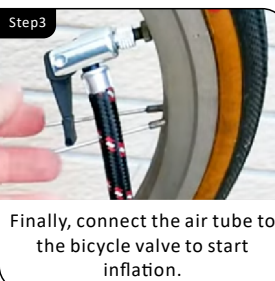
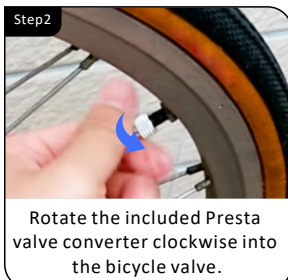
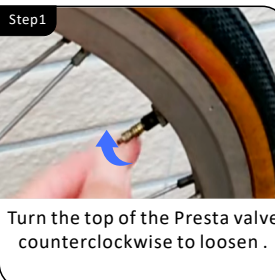


Schrader valve



If it's a schrader valve, you can follow step 3 to inflate it directly using an air hose.

If it's a French bike valve, you can follow these steps to inflate it:



Quick Start Guide

For any questions, please contact us
Email: support@aborderproducts.com