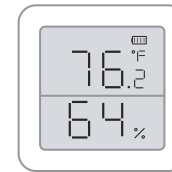
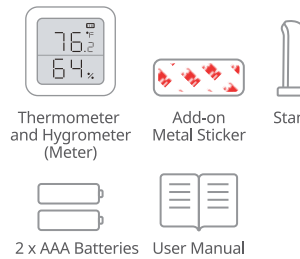


SwitchBot Thermometer and Hygrometer

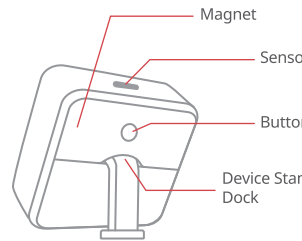
User Manual



Package Contents



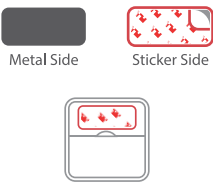
Name of Parts



How to Install

- 1 Install 2 AAA batteries into the battery case.
- 2 To install on non-metal surfaces, peel off the sticker from the back

of the metal plate and stick it on a surface. Then, put the device onto the metal surface so that the magnet can hold them together.



3 Download the SwitchBot app.



- 4 Open SwitchBot app and register for a SwitchBot account or sign in directly if you have an account. Then add Meter to your account.

Change the Temperature Unit

Press the button on the back of Meter once to change the temperature unit on the physical display.

Reset the Device

Hold the button on the back of Meter for 15 seconds.

Setting Alert

You can set up temperature/humidity alert on the device. It will send notifications to your phone via Bluetooth.

※ If you are using an Android phone, a SwitchBot Hub Plus/Mini is required to use this feature. Learn more at:



Remote Access

If you have a SwitchBot Hub Plus/Mini (sold separately), you can monitor Meter remotely and history data will be synced to SwitchBot server via the Hub device.

※ Enable Cloud Service first while using with a Hub Plus/Mini. Learn more at:



Scenes

If you have a SwitchBot Hub Plus/Mini (sold separately), you can create automations or scenes with this device. You can turn on/off SwitchBot devices and home appliances triggered by temperature/humidity thresholds.

Voice Control

If you have a SwitchBot Hub Plus/Mini (sold separately), you can receive humidity/temperature data using Amazon Alexa, Google Assistant, Siri or more.

※ Enable Cloud Services first before using voice control.



www.switch-bot.com
V2.0-2112

Works with IFTTT

If you have a SwitchBot Hub Plus/Mini (sold separately), you can turn on/off SwitchBot devices and home appliances triggered by temperature/humidity thresholds using IFTTT. You can also use other smart routines such as sunrise and sunset time to control your appliances. Learn more at:



History Data

On Meter's History page, you can review temperature/humidity data on the interactive graphs. Tap a point on the graph to see data at a specific moment.

Export the Data

On History Page, click Export Data below the graphs to save the data as a csv file.

Specifications

Model Number: SwitchBot MeterTH S1
Size: 55 x 55 x 24 mm (2.2 x 2.2 x 0.9 in)
Weight: 69 g (2.4 oz) with batteries
Battery: AAA x 2
Battery Life: Approx. 1 year
Resolution: 0.1 °C or 0.1 °F, 1 %RH
Measuring Range:
-20 to 80 °C (-4 to 176 °F) , 0 to 99 %RH
Typical Temperature Accuracy:
-20 to 0 °C (-4 to 32 °F) [±0.4 °C / 0.7 °F]
0 to 65 °C (32 to 149 °F) [±0.2 °C / 0.4 °F]
65 to 80 °C (149 to 176 °F) [±0.3 °C / 0.5 °F]
Typical Humidity Accuracy: 10 to 90 %RH (±2 %)
0 to 10 % and 90 to 99 %RH (±4 %)

Return and Refund Policy

SwitchBot Thermometer and Hygrometer has a one-year warranty which begins from the date of purchase. The following situations are not included in the Return and Refund Policy:

- Intended damage or abuse.
- Inappropriate storage (drop down or soaking in water).
- Modify or repair of product.
- Natural wearing of product.
- Natural disasters.

FAQs

Q: Meter is not showing anything
A: Please change the batteries.

Q: The alert doesn't work.

A: Please place the device within your phone's Bluetooth range.

Q: The history data doesn't show up.

A: Please place the device within your phone's Bluetooth range.

If you have any concern or problem when using our products, please kindly send feedback from the Profile > Feedback page in the SwitchBot app.

FCC Warning

This device complies with Part 15 of the FCC Rules. Operation is subject to the following two conditions:
(1) This device may not cause harmful interference.
(2) This device must accept any interference received, including interference that may cause undesired operation.

NOTE: This equipment has been tested and found to comply with the limits for a Class B digital device, pursuant to part 15 of the FCC Rules.

These limits are designed to provide reasonable protection against harmful interference in a residential installation. This equipment generates uses and can radiate radio frequency energy and, if not installed and used in accordance with the instructions, may cause harmful interference to radio communications. However, there is no guarantee that interference will not occur in a particular installation. If this equipment does cause harmful interference to radio or television reception, which can be determined

by turning the equipment off and on, the user is encouraged to try to correct the interference by one or more of the following measures:
• Reorient or relocate the receiving antenna.
• Increase the separation between the equipment and receiver.
• Connect the equipment into an outlet on a circuit different from that to which the receiver is connected.
• Consult the dealer or an experienced radio/TV technician for help
NOTE: The manufacturer is not responsible for any radio or TV

interference caused by unauthorized modifications to this equipment. Such modifications could void the user's authority to operate the equipment. This equipment complies with FCC radiation exposure limits set forth for an uncontrolled environment. This equipment should be installed and operated with minimum distance of 20 cm between the radiator and your body. This transmitter must not be co-located or operating in conjunction with any other antenna or transmitter.

FCC Radiation Exposure Statement:

FCC Radiation Exposure Statement: This equipment complies with FCC radiation exposure limits set forth for an uncontrolled environment. This equipment should be installed and operated with minimum distance 20 cm between the radiator & your body.