

Wiichee

Hangzhou Bampony Co.,Ltd.

Wiichee M5
Quick Start Guide

Package Contents

Please verify that the package contains the following items:
Wiichee host × 1 USB Charging Cable × 1
Carrying Case × 1 Quick Start Card × 1

First-Time Setup

1. Charge to Activate

Use the included USB cable to charge the device
Charging Indicators: Red flashing = Charging; Green solid = Fully charged



2. Power On/Off

Power On: Short press the power button for 1-2 seconds
Power Off: Long press for 5-6 seconds, or auto-shutdown after 5 minutes of inactivity

3. Download the App

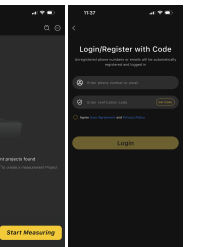
Search for "wiichee" in the App Store (iOS) or Google Play (Android)
Or scan the QR code to download



Quick Configuration

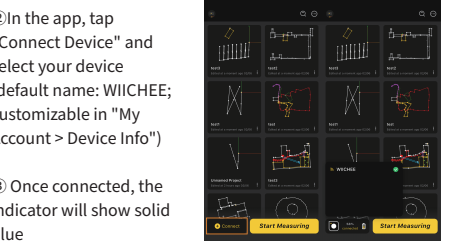
Step 1: Create Account

- Open the Wiichee app, tap the Profile Icon in the top-left corner
- Choose registration method: Phone number or Email
- Complete registration and log in



Step 2: Connect Device

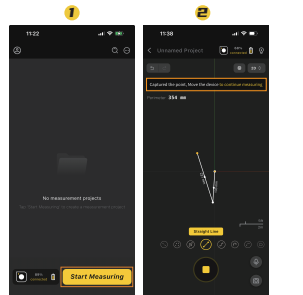
- Press the power button to turn on the device (wait 1-2 seconds), When the indicator flashes blue, the device is ready to pair



- Once connected, the indicator will show solid blue

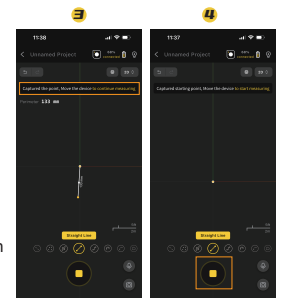
Your First Measurement

- Tap "Start Measurement" → "Path Measurement"



- Set Starting Point: Place the device at the starting position and wait for the prompt "Starting point captured"

- Move to the next measurement point; wait for "Point captured" confirmation



- Continue to additional points, or tap the yellow button to complete the

LED Indicator Reference



Charging Status

Red flashing	Charging
Solid green	Charging complete
Rapid red flashing	Charging

Measurement Status

Blue flashing	Device on, awaiting Bluetooth connection
Solid blue	Bluetooth connected
Solid red	Ready to measure; place at starting point
Solid green	Measurement point successfully captured
Green flashing	Measurement in progress
Yellow flashing	Timeout warning; place device immediately
Red flashing	Measurement timeout or error

Important Notes

- The lower corner of the device corresponding to the indicator light is the measurement reference point. Align it with the target position each time you place the device; otherwise, accuracy will be affected.
- During measurement, the moving speed of the device should not be too fast (recommended ≤ 1 m/s). Pause briefly at corners to ensure accurate point capture.
- Hold the device gently and steadily during measurement. Do not flip the device, and avoid severe collision or shaking, which may cause measurement errors.
- Battery charging temperature requirement: $0^{\circ}\text{C} \sim 45^{\circ}\text{C}$. Charging in an environment below 0°C or above 45°C is abnormal and will shorten the service life of the battery.

Troubleshooting

Connection Issues

Q: Device won't connect via Bluetooth?

A: Ensure Bluetooth is enabled on your phone; restart device and app; keep within 10 meters range.

Measurement Issues

Q: Why is the measurement inaccurate?

A: Avoid bumping or hitting the device during measurement.

B: Do not rotate the device rapidly.

C: Do not measure continuously for more than 30 seconds per segment. Place the device promptly when the yellow dot flashes.

Limited Warranty Statement

Thank you for choosing the Wiichee Smart Measurement Device. This Limited Warranty is provided by Hangzhou Bampony Co.,Ltd. ("Wiichee") and applies to purchases made through authorized channels.

1. Warranty Coverage & Period

Wiichee warrants that the product shall be free from defects in materials and workmanship under normal use for a period of twelve (12) months from the date of original retail purchase ("Warranty Period").

Remedies: During the Warranty Period, Wiichee will, at its sole discretion, either:

Repair the defective product using new or refurbished parts; or Replace the defective product with a new or refurbished product; or Refund the original purchase price upon return of the defective product.

Important: All remedies are subject to verification of the defect by Wiichee or its authorized service center. Returns or exchanges must include the product, all accessories, original packaging, and any promotional items.

Limited Warranty Statement

2. Exclusions & Limitations

This Limited Warranty does NOT cover:

2.1 Consumables and normal wear: Cosmetic damage, scratches, dents, or normal aging of exterior surfaces.

2.2 Accidental damage: Damage caused by drops, impacts, crushing, liquid exposure, foreign object intrusion, or electrical surges.

2.3 Misuse and abuse: Damage resulting from failure to follow operating instructions, improper maintenance, or use outside specified environmental conditions (extreme temperature, humidity, dust, corrosive environments).

2.4 Unauthorized modifications: Damage from disassembly, repair, or modification by non-authorized personnel.

2.5 Third-party accessories: Defects or damage caused by use of non-Wiichee certified accessories or power adapters.

2.6 Loss of data: Wiichee is not responsible for data loss or recovery costs.

2.7 Force majeure: Damage from natural disasters, acts of God, or other uncontrollable events.

2.8 No proof of purchase: Claims without valid proof of purchase or with altered/illegible serial numbers.

Limited Warranty Statement

3. Disclaimer

3.1 Wiichee is not liable for indirect, incidental, or consequential damages. This warranty is in lieu of all other warranties, express or implied.

3.2 Contact Support: Reach Wiichee Customer Service via in-app support, email, or official website

Verification: Provide proof of purchase and defect description

RMA Authorization: Obtain Return Merchandise Authorization if return is required

Shipping: Customer responsible for shipping costs to service center;

Wiichee covers return shipping for valid warranty claims

FCC Statement

Any Changes or modifications not expressly approved by the party responsible for compliance could void the user's authority to operate the equipment. This device complies with part 15 of the FCC Rules. Operation is subject to the following two conditions:

- This device may not cause harmful interference, and
- This device must accept any interference received, including interference that may cause undesired operation.

RF warning

The device has been evaluated to meet general RF exposure requirement. The device can be used in portable exposure condition without restriction.

Note: This equipment has been tested and found to comply with the limits for a Class B digital device, pursuant to part 15 of the FCC Rules. These limits are designed to provide reasonable protection against harmful interference in a residential installation. This equipment generates, uses and can radiate radio frequency energy and, if not installed and used in accordance with the instructions, may cause harmful interference to radio communications. However, there is no guarantee that interference will not occur in a particular installation. If this equipment does cause harmful interference to radio or television reception, which can be determined by turning the equipment off and on, the user is encouraged to try to correct the interference by one or more of the following measures:

- Reorient or relocate the receiving antenna.
- Increase the separation between the equipment and receiver.
- Connect the equipment into an outlet on a circuit different from that to which the receiver is connected.
- Consult the dealer or an experienced radio/TV technician for help.

Start Your Measurement Journey!

Congratulations! You now have the essential knowledge to operate your Wiichee Smart Measurement Device. As the world's first measurement device integrating motion-sensing technology, it brings unprecedented convenience and precision to your work.

Begin your first measurement and experience the power of intelligent measurement today!

For advanced features, please refer to the complete User Manual or contact our Technical Support team.

Technical Support

• Official Website: www.wiichee.com

• Email Support: wiichee@bampony.com

Scan the code to get more help

