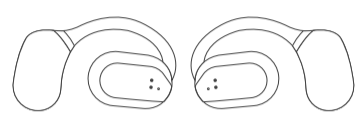


O8 Open Ear Headphones USER MANUAL

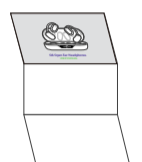
IN THE BOX



Earbuds x 1 Pair



Charging Case x 1

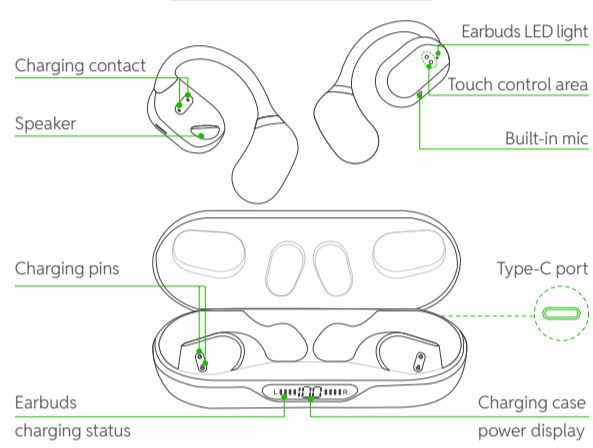


User Manual x 1



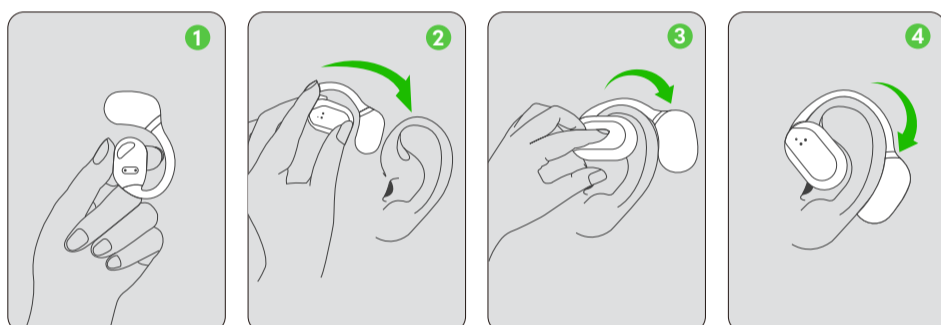
Type-C Cable x 1

PRODUCT OVERVIEW



Note: The Type-C charging port is on the back of the charging case.

HOW TO WEAR IT?



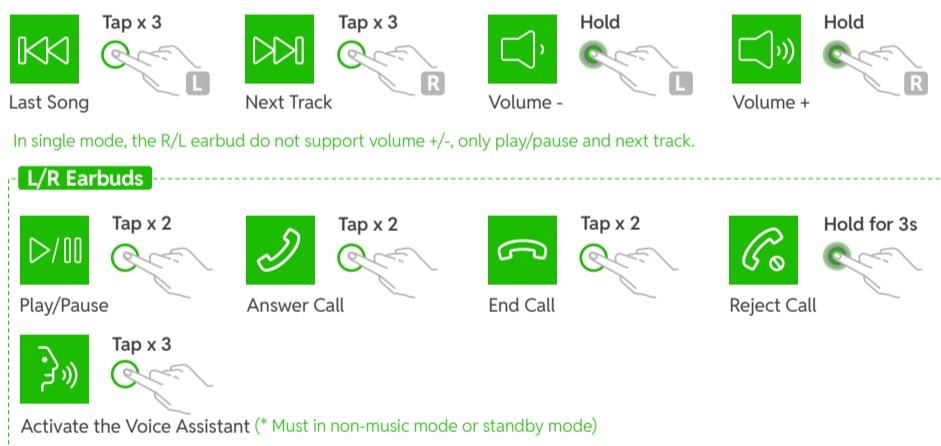
1. Ensure the earplug facing downwards

2. From top to bottom, place the ear hook behind your ear

3. Adjust by twisting for comfort and secure

4. You are all set

OPERATING THE EARBUDS



In single mode, the R/L earbud do not support volume +/-, only play/pause and next track.

Activate the Voice Assistant (* Must in non-music mode or standby mode)

SPECIFICATIONS

Product Model	O8
FCC ID	2ATJ2-X19
Charging interface	Type-C
Bluetooth Protocol	HFP/A2DP/AVRCP/HSP
Transmission Range	≤33 feet (without obstacle)
Battery of Each Earbud	65mAh/3.7V/0.24Wh
Battery of Charging Case	600mAh/3.7V/2.22Wh

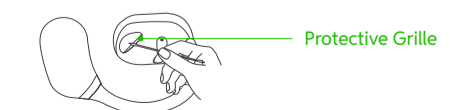
CAUTION

① Please remove the protective film before use, otherwise the earbuds will not be able to charge.



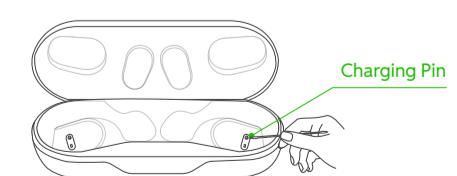
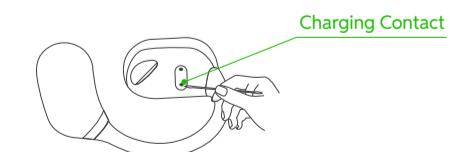
To make sound louder

② Please clean the protective grille of both earbuds if the sound becomes low.



To fix charging issue

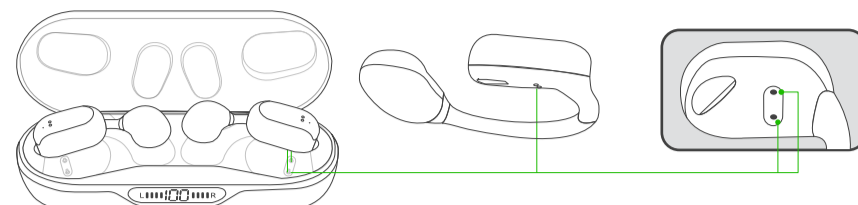
③ If the earbuds can't be charged, please clean the magnet charging contacts on the earbuds and the charging pins on the case with alcohol wipes.



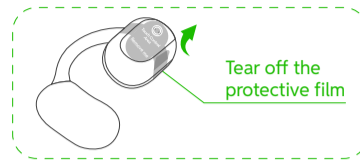
CHARGING

Charge the Earbuds

Place the earbuds exactly in the case, close the lid of the case and the earbuds will start charging.

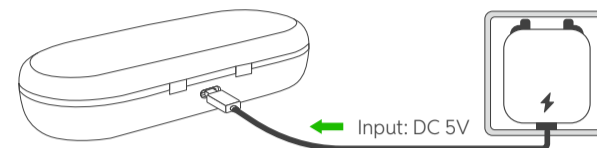


Note: Please remove the protective film from the earbuds and place the earbuds in the correct position before the earbuds start charging.



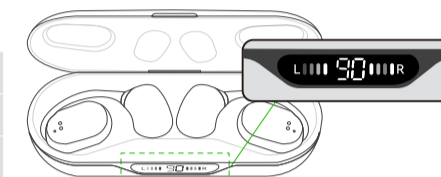
Charge the Charging Case

1. Connect the small end of the Type cable to the Type-C port on the back of the charging case.
2. Connect the other end to a USB-A wall charger (not provided) or computer, the charging case power display begins to flash.



Charging case status light

LIGHT ACTIVITY	SYSTEM STATE
L/R Digital tube ups and downs	L/R earbud charging
Digital number flashes	Case charging



PAIRING

Connect using the Bluetooth menu on your mobile device

Note: Please charge the earbuds fully when first time use.

Step 1- Enable Bluetooth on your device. (* The Bluetooth feature is usually found in the Settings menu)

Step 2- Open the charging case, the earbuds will automatically power on and enter pairing mode.

Step 3- For first time pairing, activate Bluetooth setting on your phone, search and connect "O8".



For second time use, when you open the charging case, they will connect to your device automatically.

Disconnect a mobile device

Place the earbuds in the charging case and close the lid of the case, then the earbuds will disconnect & power off automatically.

Manually Power on/off

▷ If the earbuds are out of the charging case and power off, just touch & hold both earbuds for 2s to turn them on.

Note: If the earbuds are not connected to your device over 5 minutes, the earbuds will power off automatically.

▷ Touch and hold either earbud for 5s, their LED will flash Red light 3 times and both earbuds will power off at the same time. (You can't turn them off when they are connected to your device.)

Pair with Other the Device

If you want to pair O8 Wireless earbuds with a new device, you could:

▷ Disconnect "O8" from the last paired device, search and connect "O8" on your new device, it will work properly.

▷ You can also reset the earbuds, then search and connect "O8" on your new device.

MONO MODE (Only Left/Right Earbud is being Used)

You can use one earbud alone, leave another earbud in the charging case.

* When in Dual mode, put one earbud into the charging case.

* Or only take one earbud out of the charging case, then search & connect "O8" on your device.

RESET

1. Symptom

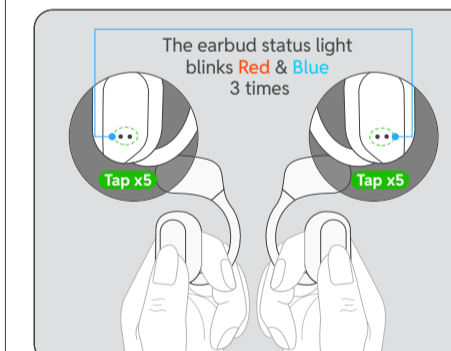
- ◆ When only one side play music.
- ◆ When you can't find "O8" on your device.
- ◆ Occur connection issues.

2. Solution

- 1 Delete all "O8" on your phone and deactivate the Bluetooth setting.
- 2 Quick click both earbuds 5 times simultaneously, their LED will flash Red & Blue light 3 times to indicate that both earbuds are fully reset.
- 3 Then put the earbuds in the charging case and charge them for a while.

Now, pick up the earbuds to turn them on, activate the Bluetooth setting on your device and select "O8" to connect, it should work properly.

If not, please put the earbuds back to the charging case and repeat the steps above.



HOW TO SYNC VOLUME ON ANDROID?

To protect users from potential hearing damage, Android's limit on max volume is quite low for Bluetooth audio devices.

If you feel the volume is too low, please access developer options and enable absolute volume, so you'll able to max the volume at your own volition and to the full capabilities of your Bluetooth earphones.

FCC CAUTION

Any changes or modifications not expressly approved by the party responsible for compliance could void the user's authority to operate the equipment.

This device complies with part 15 of the FCC Rules. Operation is subject to the following two conditions.

(1) This device may not cause harmful interference, and (2) this device must accept any interference received, including interference that may cause undesired operation.

SAFETY PRECAUTIONS

1. Please keep the earbuds and charging case out of extreme heat or humidity.
2. Please prevent the device from being stricken, dropped, warped, soaked etc.
3. Please do not dismantle the earbuds or charging case.
4. Please do not overcharge the device for a long time, otherwise it will decrease the battery's lifespan.
5. Please stop using the device if it causes any discomfort or pain.
6. Use DC 5V-1A chargers/adapters certified by a regulated manufacturer.

Note: Repeated charging or discharging of the earbuds will cause the battery performance to degrade over time, which is normal for all rechargeable electronics.



Kindly scan the QR code to activate the **lifetime warranty** of your earbuds within **15 days**.

www.pocbuds.vip