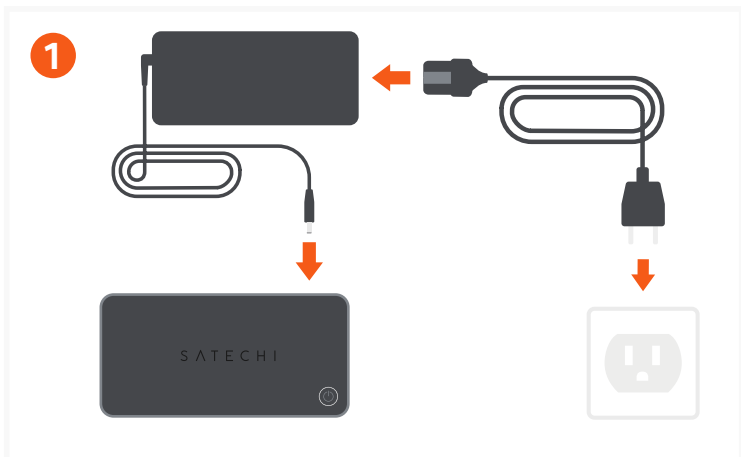
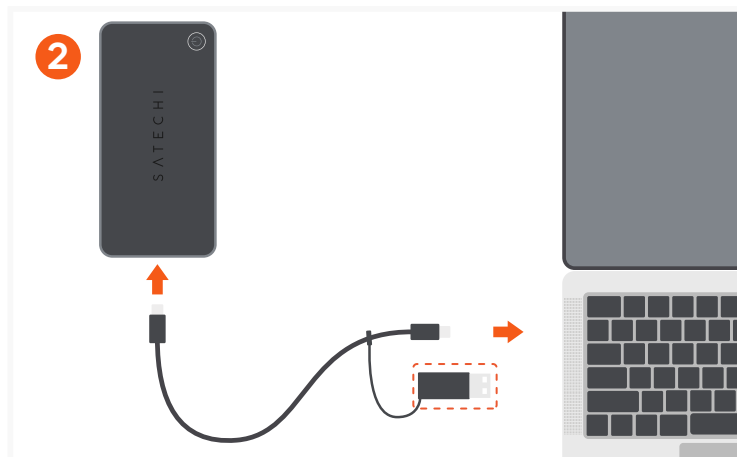


# TRIPLE 4K DISPLAY DOCKING STATION



Connect the included power adapter to the Dock. Once connected, the dock will automatically turn on. To turn the dock off you must press the power button located on top of the dock.



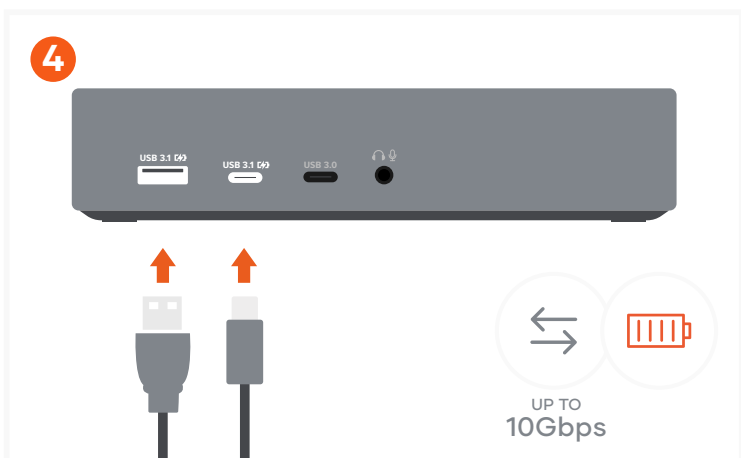
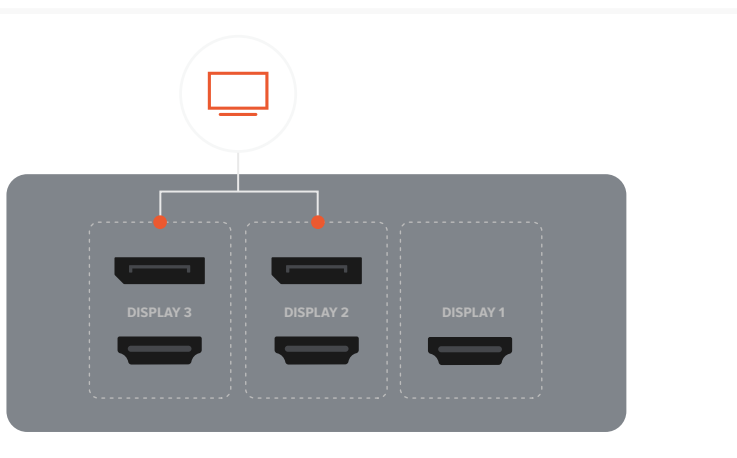
Connect the included USB-C cable to your host device. Cable can be connected to host device with USB-A port by using USB-C to USB-A adapter attached.



Download and Install DisplayLink Software on your host device:

<https://satechi.net/pages/displaylink-instructions>

DisplayLink software must be installed in order for HDMI and DisplayPorts in Display 2 & 3 groups to output video.



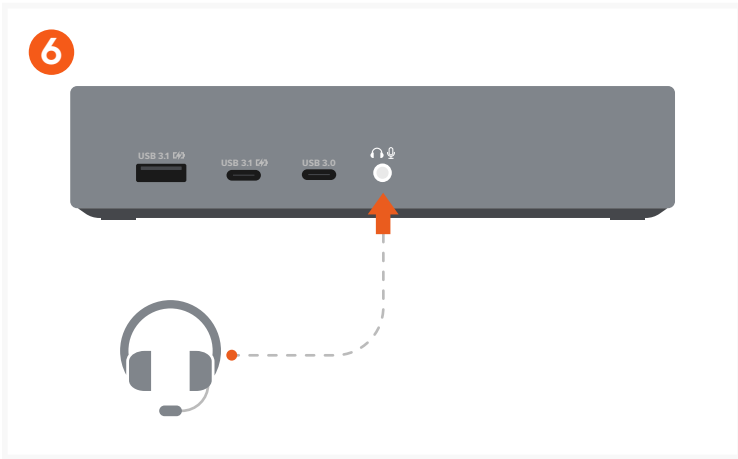
Use the USB-A and USB-C 3.1 ports for fast charging and transfers - up to 10Gbps.

Does not support CD readers, including Apple SuperDrive.

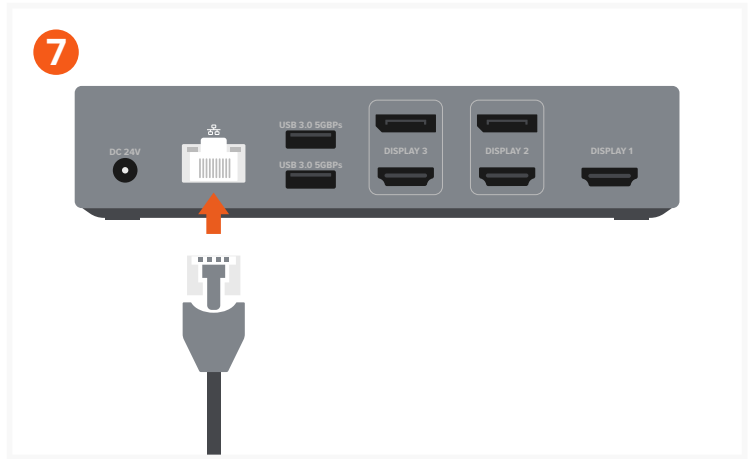


Use the USB-C data port - up to 5Gbps.

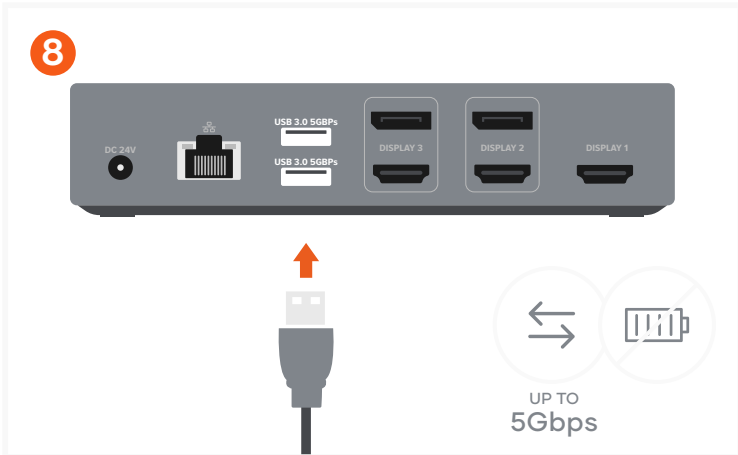
Does not support charging or CD readers, including Apple SuperDrive.



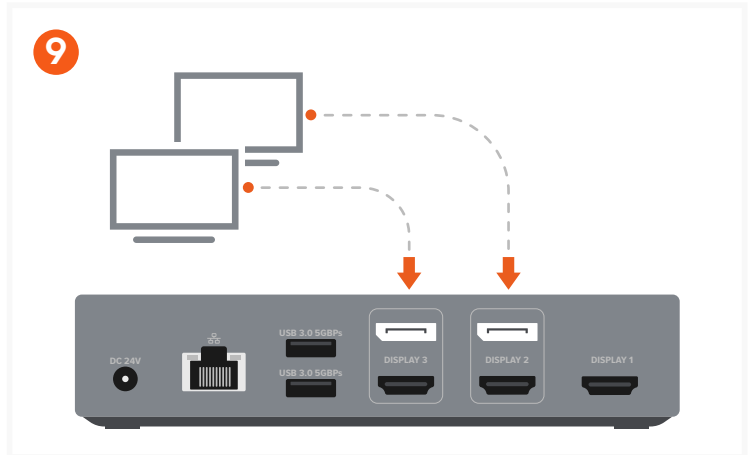
Attach audio device to 3.5mm Audio I/O jack. You will need to change sound output/input settings when connecting headphones/mic. (System Preferences > Sound > Output/Input > USB Audio).



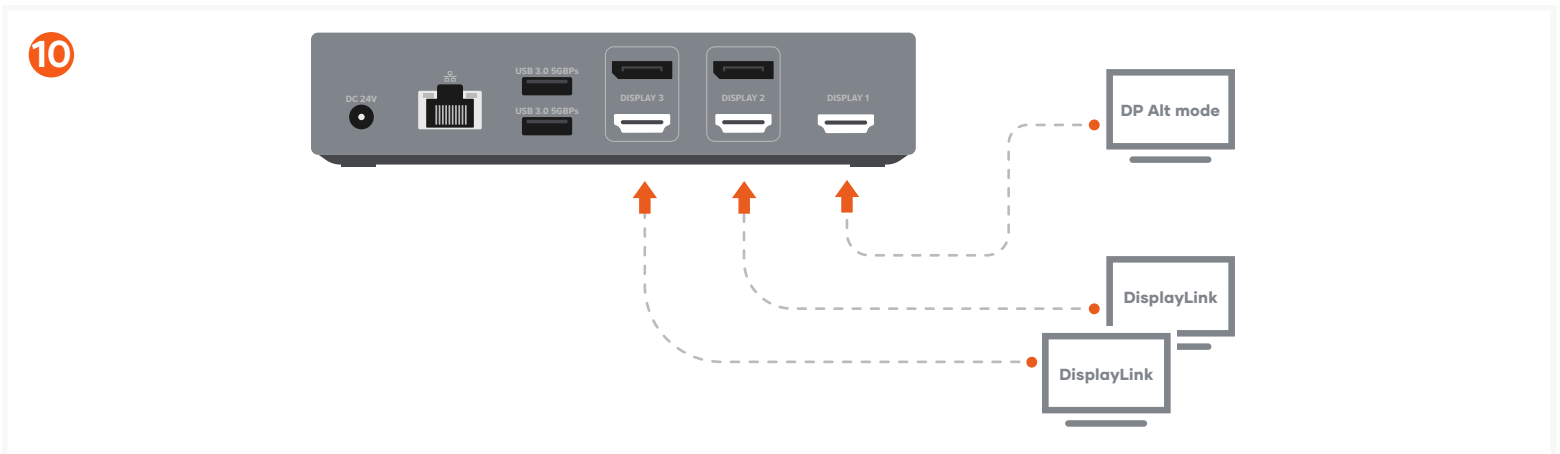
Connect an RJ45 Ethernet cable to the dock's Gigabit Ethernet port. Up to 1Gbps.



Use the two USB-A 3.0 ports for file transfers - up to 5Gbps. Does not support charging or CD readers, including Apple SuperDrive.



Use DisplayPort cables to connect up to two DisplayPort-enabled monitors using DisplayLink.



Use HDMI cables to connect up to three HDMI-enabled monitors. You must connect one HDMI via Display 1 (DP Alt mode) and the others using HDMI in Display 2 & 3 via DisplayLink.

### Attention:

- When using the USB-A connection the host device will not receive power.
- DisplayLink software must be installed to achieve up to three external displays.
- When connecting to USB-A host device using included adapter, only video groups 2 and 3 will function via DisplayLink software. Video group 1 will not function when using USB-A host device.
- Prior to powering off Docking Station, ensure all external storage devices are properly ejected. If you don't eject external storage devices properly, data on them may be damaged or corrupted.