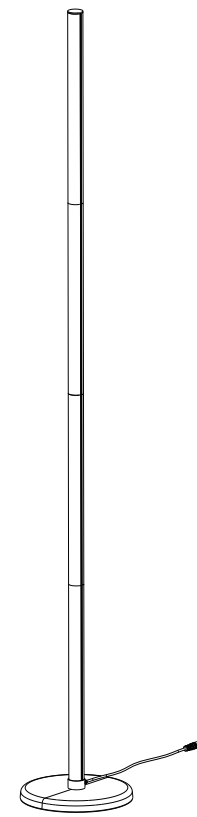


## RGBICW Floor Lamp User Manual



### Foreword

Thank you for purchasing the RGBICW Floor Lamp. We highly recommend that you read this manual in detail, with particular attention to the safety warnings, and keep it for future reference. Following these instructions is essential for the proper installation and safe operation of your lamp. Once installed, you can conveniently control the lamp via the dedicated app or the onboard buttons.

### Specification

Product Name	Bluetooth RGBICW floor lamp
Material	ABS & PC
Dimension	Φ20x144.5CM
Rated power	12W
Input voltage	AC 100-240V
Color of light	Digital RGB+Warm White
Max Lumen	1000lm
LED Light source	Digital RGB+Warm White,72 LEDs Total
Control Options	APP,Touch,RF Remote
Waterproof	Not waterproof;avoid use in rain or wet conditions.

Warranty:We provide a 2 - year warranty starting from the date of receipt. For any questions or support, feel free to contact our customer service team.

UK REP EVATOST CONSULTING LTD  
Suite 11, First Floor, May Road Business  
Centre, Telford, Shropshire, Shropshire, UK  
WV20 9JN  
contact@evatmaster.com

EC REP eVatmaster Consulting GmbH  
Bismarckstr. 30  
60325 Frankfurt am Main, Germany  
contact@evatmaster.com

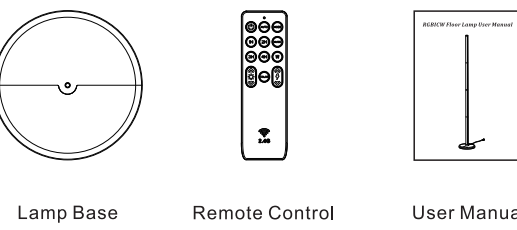
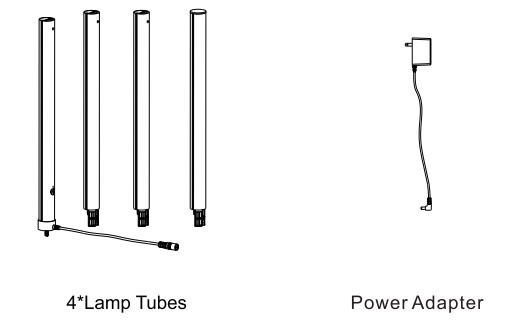


1

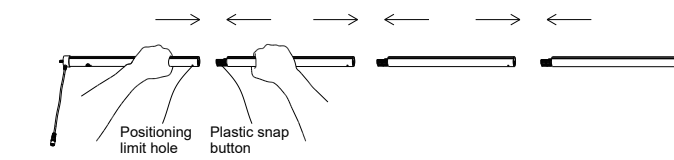
### Part 1 : Installation

#### 1.Open the package and carefully take out all components.

The package contains:  
4\*Lamp Tubes  
1\*Power Adapter  
1\*Lamp Base  
1\*Remote Control  
1\*User Manual

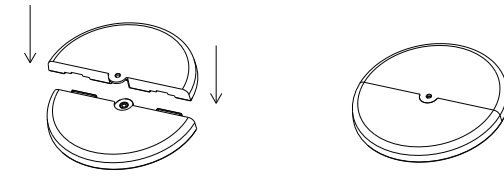


2



#### 2.The assembly method and sequence of the lamp tube.

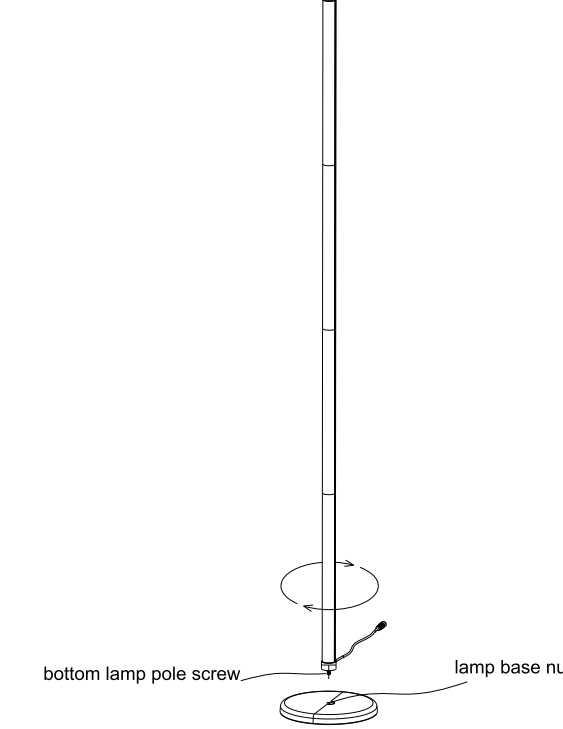
(1) Insert the bottom light tube and the middle light tube horizontally, ensuring that the connecting piece of the middle light tube is fully inserted into the connecting groove of the bottom light tube. When inserted properly, the elastic protrusion on the connecting piece will be engaged in the limit hole of the bottom light tube.  
(2) After connecting the bottom and middle light tubes, proceed to connect the remaining middle light tubes and the top light tube in order. Note that the one with a top cover is the top light tube.



#### 3.Assemble the Base

(1) Identify the two semicircular base halves.  
(2) Align the two halves together, matching the connector tabs.  
(3) Press down firmly from top to bottom until both plastic snap fasteners click securely into place.  
(4) Confirm the base is firmly assembled — it should not wobble or separate when lifted.

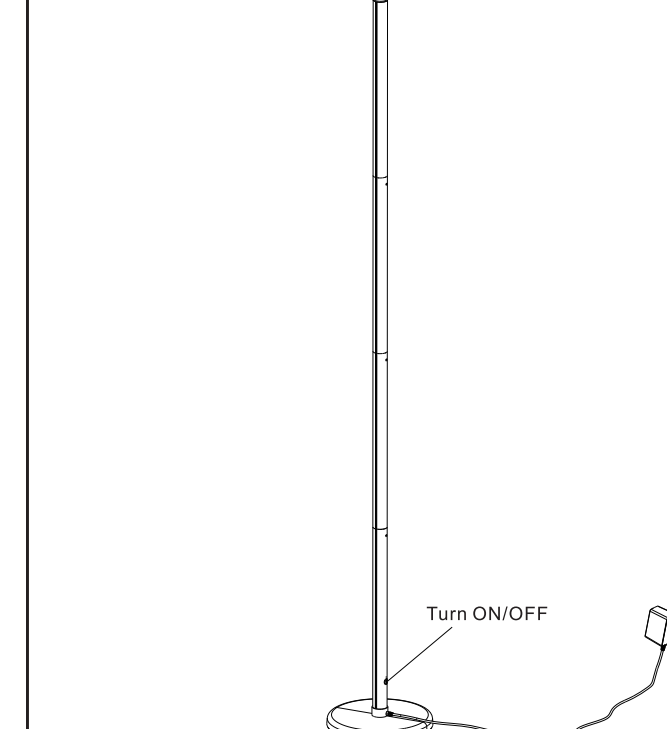
3



#### 4.installation method of lamp tube and base

Insert the fully assembled and connected light tube by turning the screw at the bottom of the tube clockwise into the nut at the center of the base. Tighten it to complete the base installation.

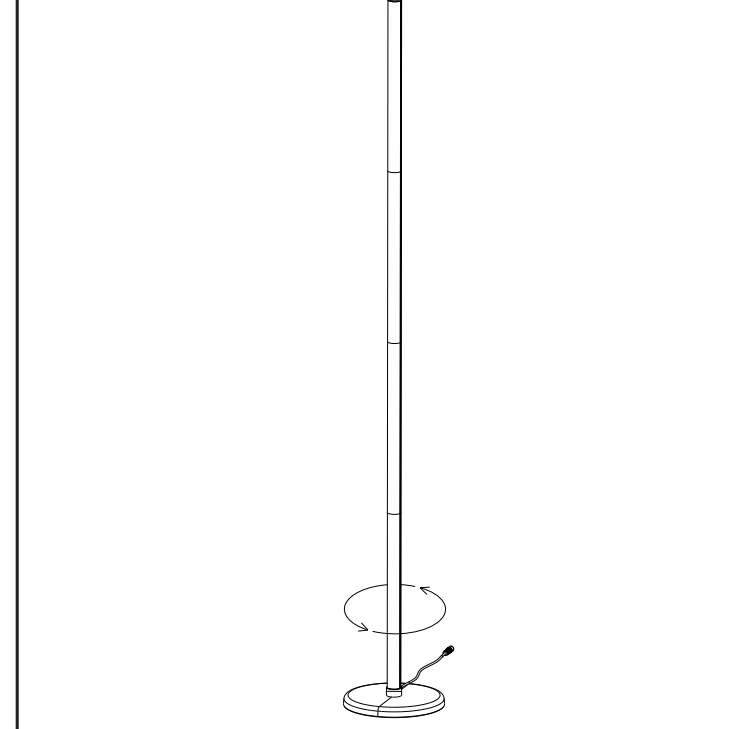
4



#### 5.Connect Power and Complete Installation

(1) Route the power cable from the base to a nearby wall outlet.  
(2) Connect the power adapter plug to the socket on the base.  
(3) Plug the adapter into the wall outlet (AC 100-240V).  
(4) The lamp will power on automatically upon first connection. Proceed to Part 2 to configure your preferred control method.

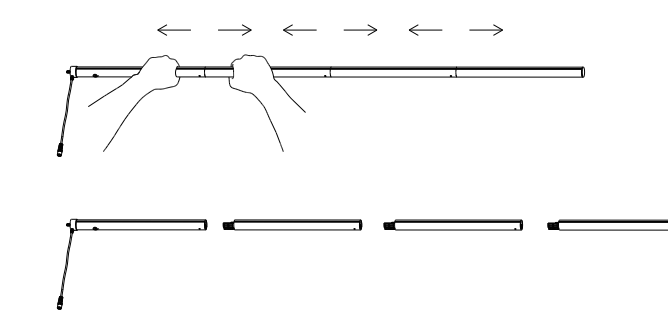
5



#### 6.Dismantling method of lamp tube and base

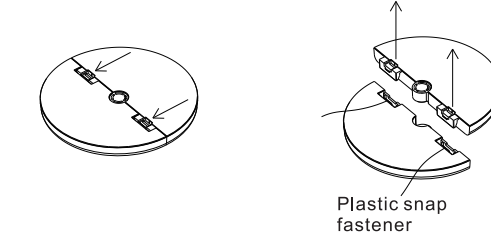
When disassembling the lamp tube and the base, we hold the base steady with one hand while gripping the bottom of the lamp tube with the other and rotating it counterclockwise until the lamp tube detaches from the base.

6



#### 7.Dismantling method of lamp tube.

Hold two adjacent fluorescent tubes with both hands horizontally and pull them outwards to the left and right in parallel, then pull them out with force.



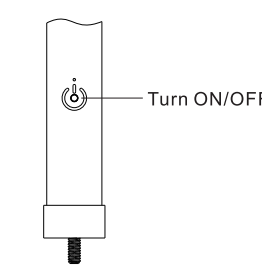
#### 8.To disassemble the base.

Gently push the buckle in the direction of the arrow, then you can separate the base into two halves. Please be careful not to damage the buckle.

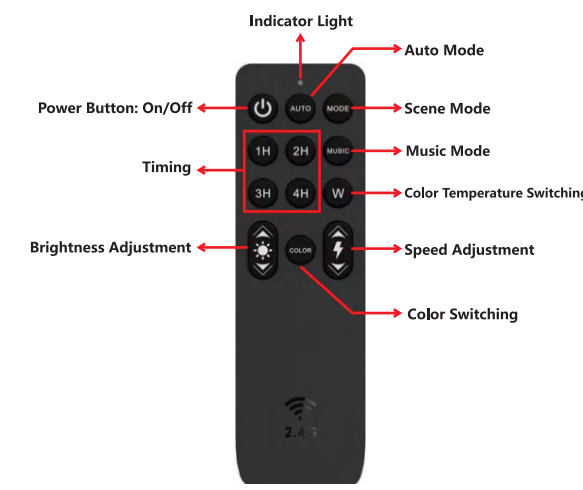
7

### Part2: Operating Guidelines

#### 2.1.Base Control:Button Function



#### 2.2.RF Remote Features



8

#### 2.3.Smart App-Giant Home

How to Download the Giant Home APP

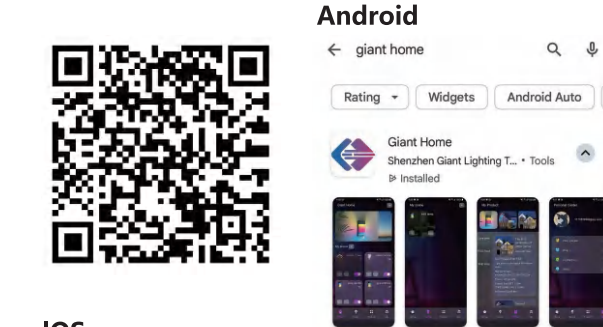
For All Users : Scan the QR code provided below to install the App.

For Android Users : Alternatively, you can download the " Giant Home " app from Google Play.

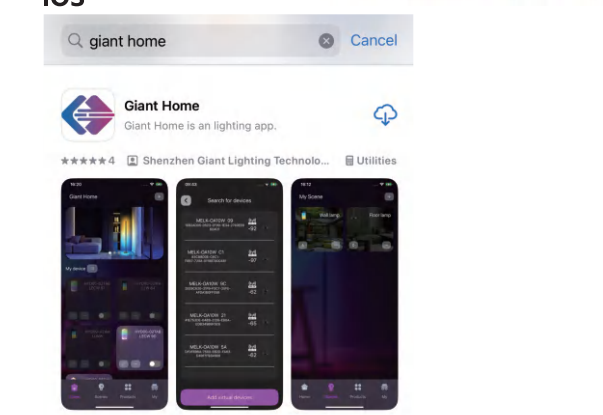
For iOS Users : Alternatively, download the " Giant Home " app from the Apple Store.

Please scan the QR code below and install the App

Android



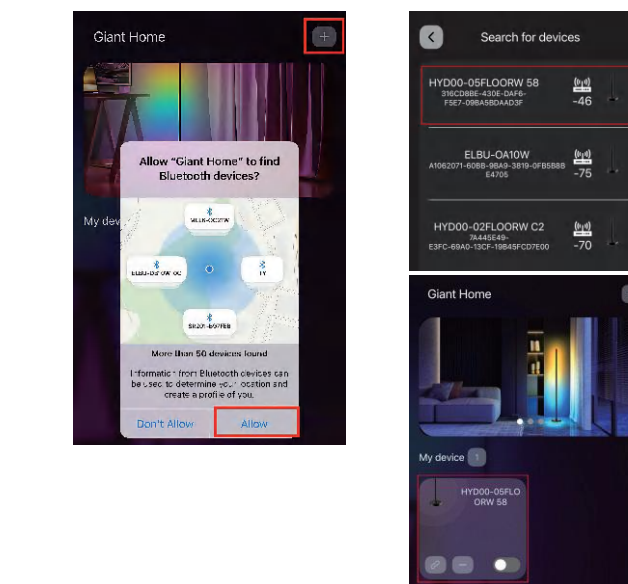
iOS



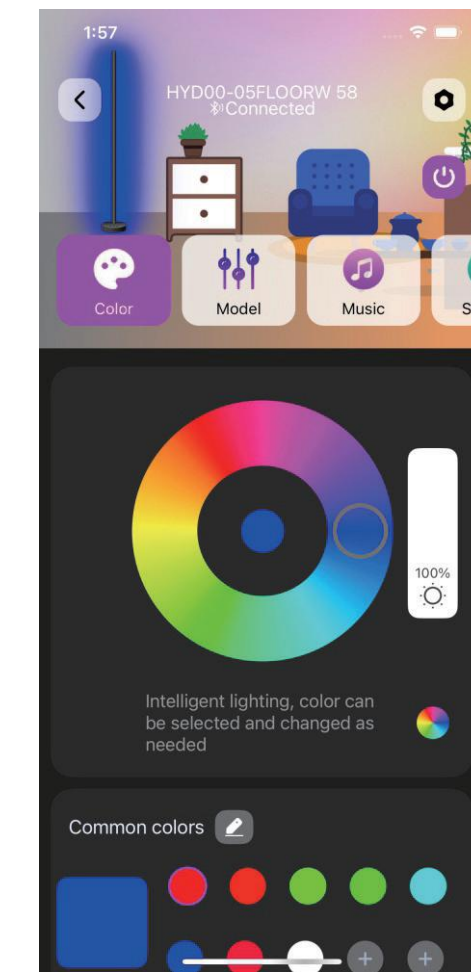
9

#### How To Operate The Giant Home APP

- 1, Turn on the phone's Bluetooth
- 2, Enter the Giant Home APP
- 3, Authorize the APP to use Bluetooth
- 4, Click the add button in the upper right corner of the home page to enter the device search interface
- 5, Click on the found floor lamp device to add the device
- 6, Click on the (added floor lamp device) on the home page to enter the floor lamp control interface
- 7, In the control interface, you can adjust functions such as color, brightness, mode, speed, microphone mode, music, sensitivity, scenes, and timers.



10



11

### Part3 :Safety Warning

- ① Heat Precaution:The RGBICW Floor Lamp and its surrounding parts may become hot after prolonged use. Avoid direct contact with the light source.
- ② Minimum Distance: Always maintain the specified minimum distance from the lamp.
- ③ Combustible Materials: keep the lamp away from flammable materials, such as curtains.
- ④ Power Safety: Always power off the lamp before replacing parts or cleaning to prevent electric shock.
- ⑤ Static Electricity Caution: Be aware of static electricity during installation and use.
- ⑥ Eye Safety: Avoid staring at the lamp for extended periods.
- ⑦ Child Safety: Keep the lamp out of reach of children.
- ⑧ Water Resistance:This product is not water-resistant. Exercise caution during installation and use in potentially wet environments

12

### Warnings from the FCC and IC

**CAUTION:** Changes or modifications to this unit not expressly approved by the party responsible for compliance could void the user's authority to operate the equipment.

**CAUTION:** This device complies with part 15 of the FCC Rules. Operation is subject to the following two conditions:(1) This device may not cause harmful interference, and (2) this device must accept any interference received, including interference that may cause undesired operation.

**FCC Statement:** This equipment has been tested and found to comply with the limits for a Class B digital device, pursuant to part 15 of the FCC Rules. These limits are designed to provide reasonable protection against harmful interference in a residential installation. This equipment generates, uses and can radiate radio frequency energy and, if not installed and used in accordance with the instructions, may cause harmful interference to radio communications. However, there is no guarantee that interference will not occur in a particular installation. If this equipment does cause harmful interference to radio or television reception, which can be determined by turning the equipment off and on, the user is encouraged to try to correct the interference by one or more of the following.

**measures:**  
 Reorient or relocate the receiving antenna.  
 Increase the separation between the equipment and receiver.  
 Connect the equipment into an outlet on a circuit different from that to which the receiver is connected.  
 Consult the dealer or an experienced radio/TV technician for help.

**FCC Radiation Exposure Statement**  
 This equipment complies with FCC radiation exposure limits set forth for an uncontrolled environment. This equipment should be installed and operated with minimum distance 20cm between the radiator & your body

13

### Warnings from the FCC and IC

**ISED Statement:** This device contains licence-exempt transmitter(s) / receiver(s) that comply with Innovation, Science and Economic Development Canada's licence-exempt RSS(s). Operation is subject to the following two conditions:  
 (1) This device may not cause interference; and (2) This device must accept any interference received, including interference that may cause undesired operation

The digital apparatus complies with Canadian CAN ICES 3 (B)/NMB 3(B). This device meets the exemption from the routine evaluation limits in section 6 of RSS 102 and compliance with RSS 102 RF exposure, users can obtain Canadian information on RF exposure and compliance.

**IC Radiation Exposure Statement**  
 This equipment complies with IC radiation exposure limits set forth for an uncontrolled environment. This equipment should be installed and operated with minimum distance 20cm between the radiator & your body

**French:** L'appareil est conforme à la partie 15 des règles de la FCC et contient un émetteur sans licence conforme à l'Innovation Normes RSS sans licence de sciences et développement économique Canada]. Les opérations sont soumises aux deux conditions suivantes: (1) L'appareil ne peut pas causer d'interférence; Et (2) L'appareil doit accepter toute interférence reçue, y compris celles qui peuvent entraîner un fonctionnement indésirable.

Cet appareil numérique est conforme à la norme canadienne can ICES 3 (b) / NMB 3 (b). L'appareil est conforme à l'exemption des limites d'évaluation de routine de l'article 6 du CNR 102 et à l'exposition aux radiofréquences du CNR 102, où les utilisateurs peuvent obtenir des renseignements canadiens sur l'exposition aux radiofréquences et la conformité.

**Déclaration d'exposition aux rayonnements IC**  
 Cet équipement respecte les limites d'exposition aux rayonnements IC établies pour un environnement non contrôlé. L'installation et l'utilisation de cet équipement doivent s'effectuer avec une distance minimale de 20 cm entre l'émetteur de rayonnement et votre corps.

14