



# **LEVELING LIFT KIT**

**Installation Instructions**

## Important

1. The actual thickness  $\neq$  lift height. The number marked on the item indicates the actual lift height.
2. Before driving, ensure all hardware is tightened to factory specifications.
3. Re-torque all lug nuts on the spacer after 100–200 miles.
4. Vehicle designs and suspension systems vary. For safe installation, we recommend having lift blocks installed by a professional auto technician or suspension expert.

## Installation Steps 1



- After removing the wheel, detach all brake line and ABS line brackets to provide sufficient slack in the lines.
- Use a wrench to remove the upper strut mount nuts and the upper ball joint nut. Tap the side of the steering knuckle with a hammer to separate the ball joint.
- Use a wrench to remove the steering linkage nut.



- Remove the sway bar nut and bushing.
- Remove the two lower strut mount bolts, then take the strut out of the vehicle.



A



B



C

**For Style A, follow the installation instructions below.**





- Install the supplied bolts into the leveling kit spacer—they will serve as new studs. Attach the spacer to the top of the strut using the supplied nuts.
- Rotate the strut 180° and reinstall it into the vehicle. Reinsert the lower strut bolts—the lower mount bushing will align.
- Raise the lower control arm to lift the spindle, while lowering the upper control arm to reinstall the upper ball joint. Reinstall the steering linkage.
- Complete the installation on the other side of the truck before reinstalling the sway bar nut and bushings.



## **For Style B, follow the instructions below.**

- Install the leveling lift kit onto the spring assembly after removing the suspension components.

- After installing the lift blocks, reassemble the removed suspension components, making sure all parts are returned to their correct positions.
- Tighten all connecting bolts and fasteners to the manufacturer's specified torque.



**For Style C, follow the instructions below.**

- After removing the suspension components, install the leveling lift kit onto the spring assembly.

## Installation Steps 2



- Align the stud with the bolt hole and pass it upward through the shock tower.



- Tighten all the nuts.
- Install the coil spring with the rubber mount in place, ensuring it is properly aligned with the suspension components. Adjust the suspension height as needed.

## Installation Steps 3



- After removing the wheel, detach any brake line and ABS line brackets to provide enough slack.



- Use a wrench to remove the upper strut mount nuts and the upper ball joint nut. Tap the side of the knuckle with a hammer to separate the ball joint.
- Use a wrench to remove the steering linkage nut.
- Remove the sway bar nut and bushing.



- Remove the two lower strut mount bolts and loosen the three upper strut mount nuts. Remove the two lower spring clip nuts and discard them.
- Insert the spacer between the lower control arm and the lower strut mount, aligning the holes.
- Insert the bolts from the top, with the nuts on the bottom. Do not insert from the bottom, as they may contact the CV shaft.



- Raise the lower control arm to lift the spindle, while lowering the upper control arm to reinstall the upper ball joint. Then, reinstall the steering linkage.
- Complete the installation on the other side of the truck before reinstalling the sway bar nut and bushings.

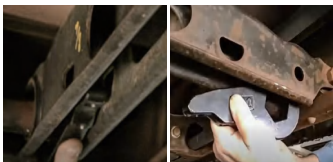
## Installation Steps 4



- Jack up the front of the truck and support under the frame rails with jack stands.
- Work one side at a time, unbolt the shock and its mount from the control arm, then remove.
- Attach the new shock mount with factory hardware, straight edge facing the engine. Then install the shock using factory hardware and tighten.

**NOTE:** *This extender is for use with stock-length shocks.*

## Installation Steps 5



- Block the rear tires to prevent the vehicle from rolling. Safely lift the front and support the frame with jack stands on both sides. Remove the front tires. Locate the torsion bar adjuster bolt behind the lower control arms and note the remaining threads—it will be used to set the new key.
- Remove the adjuster bolt and torsion bar block. Take out the old key and install the new one. Reinstall the adjuster bolt to the original position, remove the unloading tool, and make any minor adjustments equally on both sides.

## Installation Steps 6



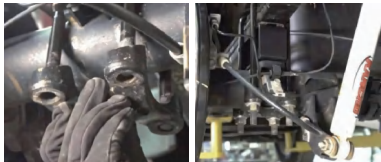


**Installation Notes:** The new rear blocks are tapered to correct the pinion angle, with the smaller end facing the front of the truck.

- Support the rear axle with a jack and jack stands.
- Remove the brake and parking brake cables so there is slack in the lines.
- Remove the lower rear shock mount nut and bolt.



- Remove the factory rear U-bolts and discard them.
- Lower the axle to remove the factory block.
- Install the new rear block with the smaller end of the spacer facing the front of the truck.



- Install the new supplied U-bolts and torque to factory spec.
- Finish installing the kit on the other side, then reconnect any brake or ABS lines. After 100 miles, recheck all bolts to factory torque specifications.

## Installation Steps 7



● Remove the old rear axle spring by loosening and removing its bolts and nuts with a ratchet wrench and socket. Carefully take out the spring, avoiding damage to nearby components.

● Place the new lift block under the coil spring and install the assembly onto the vehicle.



Tighten all bolts and fasteners securely, then gently shake the vehicle to check for any looseness or unusual suspension noise.