

INALSA

JUICE EXTRACTOR

Duronic 900

—+—
Instruction Manual

Cum

Warranty Card
—+—

Dear Customer,

Congratulations! On the purchase of your **INALSA Juice Extractor**, this is designed to include many superior features that permit you the fullest expression of your juicing skill and enthusiasm. You are now on the threshold of a whole new world of juicing pleasure.

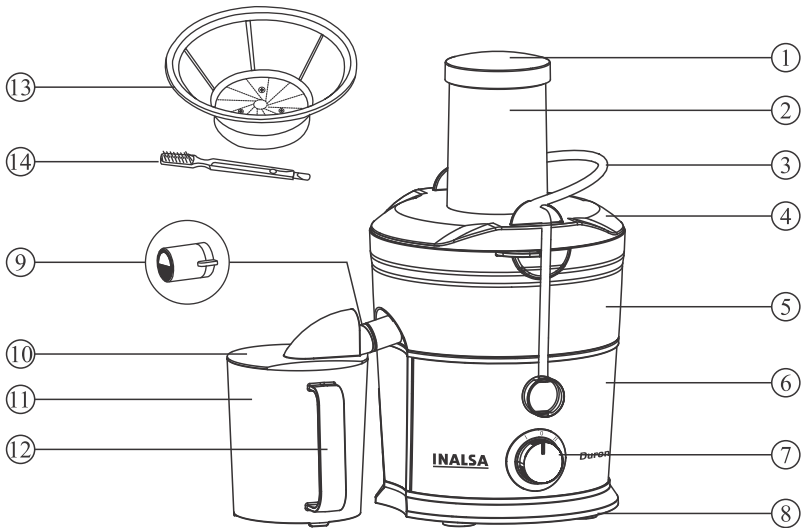
At INALSA, we have a reputation of manufacturing innovative, high quality appliances such as Food Processors, Mixer Grinders, Juicer Mixer Grinders, Cooking Ranges, Juice Extractors, Cooktops, Microwave Ovens, Oven Toaster Grillers, Hand Blenders, Electric Kettles, Rice Cookers, and Electric Chimneys. Your newly acquired **INALSA Juice Extractor** bears the same distinctive hallmark of excellence.

It is all the result of vigorous quality consciousness in INALSA's design and development where uncompromising standards are maintained and rigid quality control measures are exercised on raw materials, components and finally, the finished product.

Your **INALSA Juice Extractor** has a lot of thoughtful features built in to make your juicing convenient. Please read these instructions carefully, so that you may get the best out of the power packed features in your **INALSA Juice Extractor**.

Welcome to the INALSA world of juicing pleasure!!

Parts Identification:



- | | |
|-------------------|-----------------------|
| 1. Food Pusher | 8. Bottom Pads |
| 2. Feeder Tube | 9. Anti Drip Nozzle |
| 3. Safety Lock | 10. Juicer Jar Lid |
| 4. Juicer Cover | 11. Juicer Jar |
| 5. Pulp Collector | 12. Juicer Jar Handle |
| 6. Main Body | 13. SS Juicing Mesh |
| 7. Speed Knob | 14. Cleaning Brush |

Technical Specification*

| | |
|--------------------|------------------------------------|
| Product | Juice Extractor |
| Model | Duronic 900 |
| Wattage | 900 W |
| Voltage | 240V, AC, 50Hz |
| Juice Jar Capacity | 1.0L |
| Cord Plug | 2 Pin Moulded plug with PVC cord |
| Safety Protection | Inbuilt Overheat Safety Protection |

* Due to continuous improvements in product, specifications are subject to change without prior notice.

Safety Instructions

We have paid special attention to the safety of this household appliance during designing and manufacturing. However the user should also use and take care of them properly. Here are the instructions for this Juice Extractor. Please read it completely and carefully before using.

1. When using for the first time, remove all packing materials and wash the jars and all parts which will come in contact with fruits/Juice with warm water. Rinse and dry thoroughly.
2. Don't leave unit unattended while it is running, never let children to operate the unit.
3. Unplug the juicer from power outlet when not in use, before putting on or taking out the parts and before cleaning.
4. Keep hand and utensils out of fruit feeder while processing to prevent the possibility of accidents. Use food pusher supplied with the unit to dislodge the food jammed in the feeder tube.
5. Please note if food becomes jammed and can't be dislodged using the food pusher, turn the unit OFF, unplug from the outlet and disassemble the unit to remove food.
6. Juicing cutter is sharp, handle carefully .
7. To avoid injury, never place juicing SS mesh on the unit without pulp collector properly attached.
8. Use this product with rated AC voltage and frequency only.
9. If the power cord is damaged, do not use this appliance and contact to our authorized services center.
10. **This Juice Extractor has built in safety switch when the safety lock is not fastened, the motor can't run.**
11. **The product has a built in overheat protector for protection of motor, which stops the motor incase of overheating. If it happens, wait for 10 -12 mins. remove cause of over heating.**
12. **This product should not be run for more than 2 minutes continuously.**

Note

1. To prevent food from jamming, do not put food into the feeder tube unless the motor is running.
2. For large quantities when the Juice jar is $\frac{3}{4}$ full, empty contents into a large container. Empty the pulp collector when it is half full.
If food become jammed and can't be dislodged quickly using the food pusher. Follow these steps to prevent damage to the unit.
 - a) Turn unit OFF immediately and unplug from electrical outlet.
 - b) Unlock safety lock and disassemble the unit to remove food.

How to Use

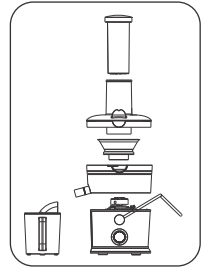
1. After unpacking the unit and before use, check and make sure all mechanical parts of the unit and all attachments are not damaged.
2. Wash and dry all part of the appliances, which will come into contact with food. clean the body of unit with a soft dry cloth.
3. Practice assembly and dismantling the unit a few times before making juice.
4. Wash fruit and/or vegetable and cut them into pieces that fit into the feeding tube.

How to Dismantle & Assemble

Dismantle:-

1. Unplug the appliances from the power supply.
2. Release the safety lock arm.
3. Remove the food pusher, juicer cover, pull the SS mesh upwards and pulp collector separately.

Note : For easy removal of juice mesh, hold pulp collector with both hands and try to release SS mesh along with pulp collector in upward direction together.



Assemble:-

1. Place pulp collector on the motor unit, and insert SS mesh. (Ensure SS mesh should lock properly)
2. Mount juicer cover onto the pulp collector and fasten the safety lock arm upwards until it clicks into place.
3. Put the juicer jar under the anti drip nozzle.
4. Plug in and ready for operation.

Cleaning & Maintenance

1. Place the base on a dry flat surface
2. Clean Food Pusher, Juicer Cover, Pulp Collector, and Juicer mesh with soapy water and rinse thoroughly. To remove pulp from Juicer mesh, hold bottom side facing up under running water and gently scrub with a soft nylon brush.
3. To protect against risk of electrical shock do not put the main unit in water or other liquids.
4. Never use gas or alcohol to clean any part of the unit. Never put any part of the Juice Extractor in dishwasher or boiling water.
5. If not in use please put the juicer in a dry place to protect the motor. It is good to use the unit frequently.

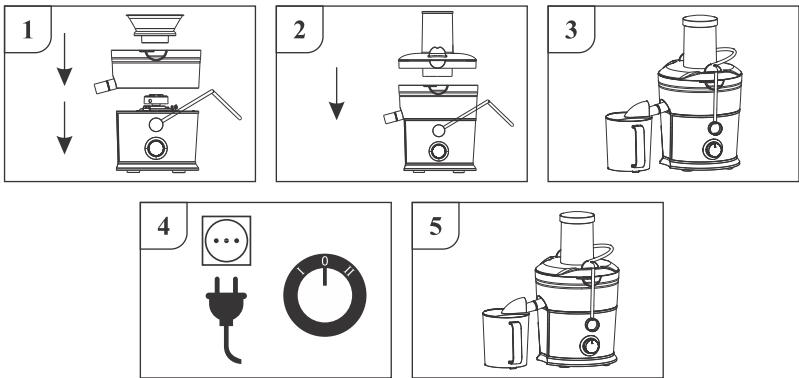
How to Use Juice Extractor

The appliances will only function if all part have been properly assembled and the lid has been properly locked in place with the safety lock arm.

1. Place the pulp collector onto motor unit, and put the SS mesh in the juice/pulp collector. Make sure the SS mesh is fitted securely onto the driving shaft.
2. Place the Juicer cover and lift the lock arm upwards to lock in position on either side of the juicer cover.
3. Slide the pusher into the feeding tube by aligning the groove in the pusher with small protrusion towards the inside of the feeding tube.
4. Switch on by turning the speed knob to select setting I (low speed) or II (high speed) or O to OFF.

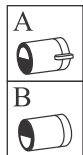
Note : For soft fruits like water melon, orange etc. it is advised to use 1st speed. Also while juicing soft fruits, don't push fruits with food pusher. Let the fruit cut at its own speed.

5. Put the pre-cut pieces into the feeding tube and gently press them down towards the rotating SS mesh with the food pusher. Make sure the juice jug is placed under the anti drip nozzle before making juice.



How to Use Detachable Anti Drip Nozzle

- A. Rotate Clock wise to OFF the juice dripping
- B. Rotate Anticlock wise to ON the juice flow into juice jar



Troubleshooting Guide:-

| Problem | Possible Cause | Solution |
|---|---|---|
| Appliance Does Not Work | No Electricity Supply | Ensure that the plug is plugged in well. |
| Appliance suddenly stops working while in use | This appliance is equipped with an 'Inbuild Over Load Protector'. If appliance overheats, it automatically cuts off power supply. | Unplug the appliance. Remove cause of over load or empty the pulp container. Let it cool down for 10-12 minutes and put plug back into wall socket and switch ON appliance again. |
| | There may be fruit pieces stuck in the juicing unit or the sieve | Unplug the appliance, remove the juicer lid and remove any pieces of fruit that may have been lodged in the juicing unit or the sieve |
| Appliance gives an unpleasant smell during first few times of use | This is normal for the first few times | If appliance continues to smell after using a few times: <ul style="list-style-type: none"> • Ensure that there are no ingredients stuck inside it. • Ensure that appliance has been assembled correctly. |
| Appliance makes a lot of noise or vibration. | The sieve may not be properly fixed on the unit | Unplug the appliance, remove the juicer cover and fixed the sieve properly on the base unit coupler |
| | Clogging of sieve with pulp or fiber | Unplug the appliance, remove the sieve, clean and reuse |
| There are fumes from the appliance | Appliance may have been used for too long. | Switch off appliance and let it cool for 60 minutes |
| Unsatisfactory juicing performance | Large size of ingredients | Cut ingredients into appropriate size |

Note : In case if product is unable to operate/wrok in desired way please contact INALSA Authorized Service Centre.

Warranty

The “**Inalsa Juice Extractor**” is fully warranted against any manufacturing defect for a period of **Two Years** from the date of purchase. Should any defect develop in the **Juice Extractor** during the warranty period, **Tuareg Marketing Pvt. Ltd.** undertakes to get the **Juice Extractor** or any part thereof, repaired at any of its Authorised Service Center.

The above warranty shall be subject to the following terms and conditions:-

1. Any defective product or part thereof will be repaired within the above stated warranty period on receipt of the same with this card duly filled in and stamped by dealer from whom the product was purchased along with the purchase bill/ invoice, provided the product is brought to our nearest service center freight paid and packed securely.
2. In the event of repairs/ replacement of any part of product, this warranty will thereafter continue and remain in force only for the unexpired period of warranty.
3. This warranty is valid only when:-
 - The product is purchased from the company's authorized dealer and accompanied by this warranty card/ cash memo.
 - The product has been serviced by the authorized service personnel.
 - The product has been used and maintained in accordance with the instruction manual.
4. The warranty does not apply to :-
 - Normal wear and tear of the product
 - Damage due to chipping, peeling, plating and denting.
 - Damages arising due to running of the appliances on the alternate sources of power such as Inverter, generator or any such auxiliary power supply aid resulting in variation/ fluctuating voltage
 - Breakage or damage to components made of ABS, SAN, Bakelite, Glass and such plastic/rubber parts, cord, bulbs and surface coating.
 - Damages resulting from accidents, mishandling or negligence on the part of the customer
 - Product if used for the commercial purposes.
 - Product, the serial number of which has been removed obliterated or altered on the specification plate.
5. The warranty is in lieu of all other warranty, expressed or implied and does not cover indirect or consequential damages/ loss.

WARRANTY CARD

Product : Juice Extractor
Model : Duronic 900
Serial No :
Date of Purchase :
Bill/ Cash Memo No. :
Purchaser's Name :
Address :
:
:

Dealer's stamp and Signature



Scan For Extended
Warranty Registration



Must register within 30 Days from date of purchase to avail
6 MONTHS EXTENDED WARRANTY

- Please scan the **QR CODE** for product registration and avail “**6 MONTHS EXTENDED WARRANTY**” on product
- Please preserve the invoice for the product warranty claim. Customer purchasing from online platforms needs to produce the online partner’s invoice copy to claim the warranty or visit : www.inalsaappliances.com/product-registration



Scan and Download
INALSA Connect App
to Register your
Warranty & Complaint

For any feedback or complain, you can also connect us at :
E-mail- customercare@inalsa.co.in

Customer Care Number
(Open on all 7 Days* from 9:30 to 18:30)

9773982065

INALSA

TUAREG MARKETING PVT. LTD.
Khasra No - 1189, Bhalswa, Delhi- 110033