

# Insta360

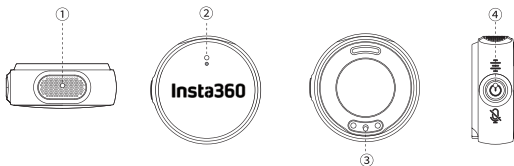
---

## Mic Air Transmitter

### Instructions for Use

Model: CINSABWB

## Transmitter



① Omnidirectional Microphone

② Indicator Light:

Transmitter Status	Indicator Light Status
<b>Connecting to Camera</b>	
Not connected	Flashing blue slowly
Pairing	Flashing blue rapidly
Connected	Solid blue
<b>Audio Status</b>	
Muted	Solid red
Noise reduction on	Solid green
<b>Battery Status</b>	

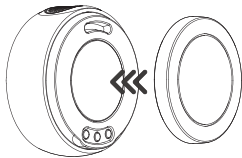
Low battery (< 10%)	Flashing yellow every 5 seconds
Charging	Solid orange (turns off when fully charged)
<b>Updating Firmware</b>	
Update in progress	Pulsing blue

③ Charging Contacts: Line up the contacts with those on the charging base to charge the transmitter.

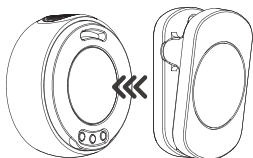
④ Multifunction Button:

<b>Transmitter Function</b>	<b>Button Operation</b>
Power on	Long press for 2 seconds
Power off	Long press for 3 seconds
Take a photo	Press once
Record video	Press once to start/stop recording
Noise reduction	Double press to enable/disable
Mute	Triple press to mute/unmute
Pairing Mode	Long press for 6 seconds (when transmitter is off)
Switch Connection Mode	Double press (when transmitter is not connected)

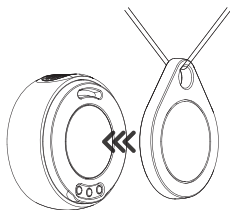
## How To Wear



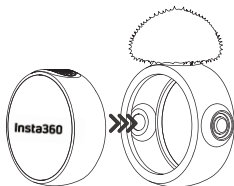
① **Button Magnet:** Place the Button Magnet under your clothes and attach the transmitter on the outside for a secure hold.



② **Clip Magnet:** Use the Clip Magnet to attach the transmitter to your collar.



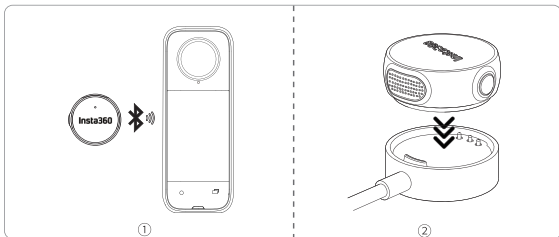
③ **Magnet Pendant:** Wear the pendant around your neck and attach the transmitter to it using the built-in magnet.



④ **Windshield:** Reduce wind noise. Can be used handheld or with any magnetic accessory.

## Connect The Transmitter To A Camera Via Bluetooth

1. When using the transmitter for the first time, long press the button for 2 seconds to enter pairing mode. The indicator light will begin flashing blue rapidly.
2. Turn on the camera. Swipe down on the camera touchscreen to access the Shortcut Menu. Tap "Bluetooth Headset/Microphone" and select "Insta360 Mic Air" to connect to the transmitter (image ①). If the connection is successful, the transmitter's indicator light will turn solid blue.
3. While connected, press the button on the transmitter once to take a photo or start/stop recording (depending on the selected shooting mode). Press twice to toggle noise reduction. Press three times to toggle mute.
4. After pairing the transmitter with the camera, they will automatically reconnect the next time both devices are turned on.
5. To connect to a different Insta360 camera, ensure the transmitter is powered off. Then long press the button for 6 seconds to enter pairing mode. The indicator light will flash blue rapidly. Connect to another camera as described in step 2.
6. To charge the transmitter, attach it to the charging base as shown in image ②. Make sure the charging contacts are properly aligned.



## Update The Firmware

1. Open the Insta360 app and tap [My] > [Accessory Update].
2. Ensure the transmitter is powered off, then long press the button for 6 seconds to enter pairing mode. The Insta360 app will search for and connect to the transmitter. If a firmware update is available, follow the on-screen instructions to proceed.

## Specs

Model	CINSABWB
Wireless Mode Operating Frequency	2.402 GHz~2.480 GHz
Equivalent Isotropic Radiated Power (E.I.R.P.)	≤ 20 dBm
Bluetooth Frequency Range	2.402 GHz~2.480 GHz
Bluetooth Transmission Power (E.I.R.P.)	≤ 20 dBm
Frequency Response Range	20 Hz~20 kHz
Sampling Rate/Bit Depth	48 kHz/24 bit

Transmitter Battery Specifications	3.87V/97mAh/0.37539Wh
Charging Temperature Range	32–113°F (0–45°C)
Operating Temperature Range	14–113°F (-10–45°C)

## Notes

1. The battery's state of charge (SoC) is  $\leq 30\%$  of the rated capacity at the time of leaving the factory.
2. Do not disassemble or attempt to repair the transmitter yourself.
3. Use the product only in temperatures between 14°F and 113°F (-10°C to 45°C).
4. The battery may become damaged and unusable if charged in environments above 113°F (45°C) or below 32°F (0°C).
5. Charge the transmitter by attaching it to the charging base and connect it to a power source with the built-in USB-A cable. Once charging is complete, remove the transmitter from the charging base.
6. Do not drop, strike, or place heavy objects on the transmitter. Even if there is no visible damage on the exterior, internal components may be damaged, which could affect performance or functionality.
7. If the transmitter has not been used for an extended period, the battery may be depleted. Charge the transmitter to power it on. If you do not plan to use the transmitter for a long time, perform battery cycling and charge the battery to 60% every six months to help extend its lifespan.
8. When not in use, store the product in a cool, dry environment.
9. Do not dispose of the transmitter with household waste. Recycle it in accordance with local waste management regulations.
10. The Magnet Pendant includes a lanyard. Children should only use it under adult supervision to avoid the risk of strangulation or suffocation.

11. Ensure the Clip Magnet is clipped securely to prevent it from falling and damaging the transmitter.
12. The transmitter and its accessories contain magnets. Keep them away from pacemakers and other sensitive devices to avoid interference.

## Disclaimer

Please read this Disclaimer carefully. Using this product means that you acknowledge and accept the terms of this disclaimer. By using this product, you hereby acknowledge and agree that you are solely responsible for your own conduct when using this product and any consequences thereof. You agree to use this product only for proper and lawful purposes. You understand and agree that Arashi Vision Inc. (hereinafter referred to as 'Insta360') accepts no liability for any and all misuse, consequences, damages, injuries, penalties, or any other legal responsibility directly or indirectly incurred by your using this product and associated accessories. Before every use, make sure that your accessories are functioning properly. If there's any damage or irregularity, stop using them immediately. Within the scope of state laws and regulations, Insta360 reserves the right of final explanation and revision for the commitment.

## After-Sales Service

The warranty period of the attached product is 1 year from the original retail purchase. Warranty service may vary according to the applicable laws of your state or jurisdiction. For detailed warranty policies, please visit <https://insta360.com/support>.



RACCOLTA  
CARTA



219-259149

Arashi Vision Inc. 影石创新科技股份有限公司

TEL / 服务热线 : 400-833-4360

WEB / 官网 : [www.insta360.com](http://www.insta360.com) EMAIL / 邮箱 : [service@insta360.com](mailto:service@insta360.com)

ADDRESS/ 地址 : 深圳市宝安区新安街道海旺社区兴业路 1100 号金利通金融中心大厦 2 栋 1101,1102,1103  
11th Floor, Building 2, Jinlitong Financial Center, Bao'an District, 518000, Shenzhen, Guangdong, China

Arashi Vision (U.S.) LLC

TEL: +1 800 6920 360

WEB: [www.insta360.com](http://www.insta360.com) EMAIL: [service@insta360.com](mailto:service@insta360.com)

ADDRESS: 2323 Main St, Unit 16, Irvine, CA 92614, United States

Insta360 GmbH



TEL: +49 30 330 81669

WEB: [www.insta360.com](http://www.insta360.com) EMAIL: [service@insta360.com](mailto:service@insta360.com)

ADDRESS: Gartenfelder Straße 29-37, Gebäude 31/31.12

1.OG, 13599 Berlin Germany



305010100076

V1.1