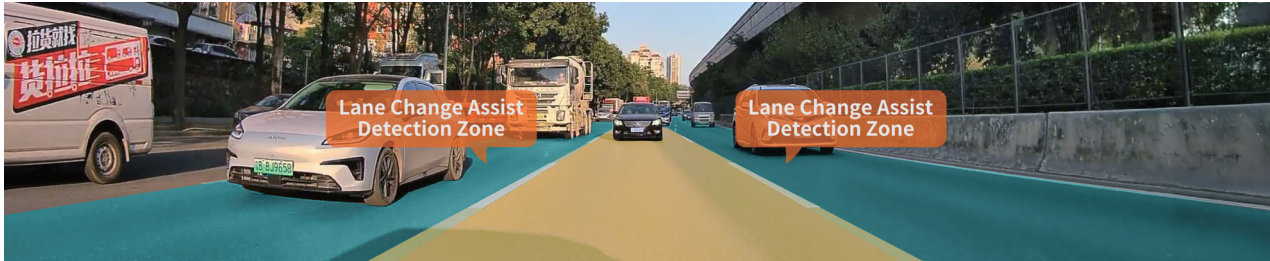


Main Unit Settings Menu Functions

Should the vehicle be continuously overtaken within 15 metres to the left/right, the red warning bars on both sides of the LCD display will flash continuously whilst emitting a 'beep-hiss' sound.



Note: Objects other than vehicles (persons, bicycles, motorcycles, etc.) cannot be detected. The effective detection range is limited by factors such as road conditions (sharp bends, steep slopes, etc.), weather conditions (rain, snow, fog, etc.), and obstacle characteristics (low profile, small size, thin profile, etc.).

Installation Recommendations

To achieve optimal sensing coverage, mount the rear camera within the recommended installation area (refer to Section VII: Installation Steps for specific procedures).



1. Fit the rear camera bracket.
2. Mount the camera at the top centre of the number plate using the fixing screws and double-sided adhesive tape provided in the accessories.



3. Mount it centrally above the rear windscreen using double-sided adhesive tape.

Main Unit Settings Menu Functions

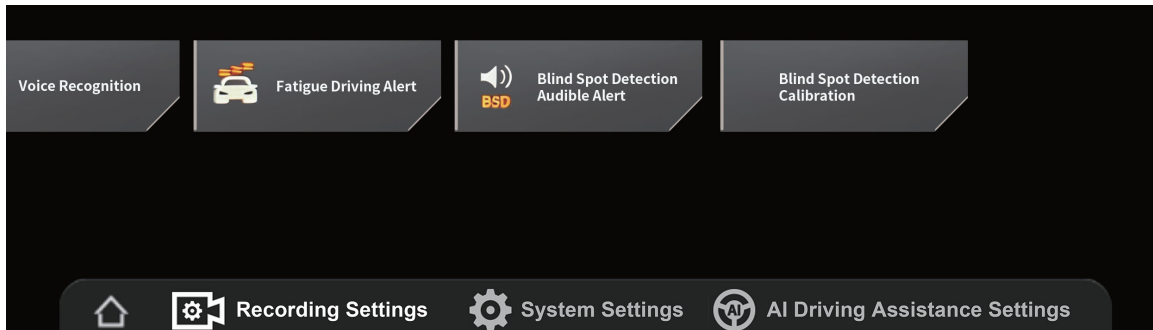
BSD Calibration

Camera Installation

1. Install the camera at the center of the rear of the vehicle.
2. Under ideal conditions, align the center of the screen directly with the vanishing point of the road. Ensure it is perfectly centered both vertically and horizontally.
3. Note: A lens calibration must be performed for every new "Camera + Sensor" combination.
4. For optimal performance, the vanishing point can be set to a fixed, optimal position based on the specific vehicle model and installation location.

Calibration Steps

1. Click "Start Calibration" in the menu to enter the calibration interface.

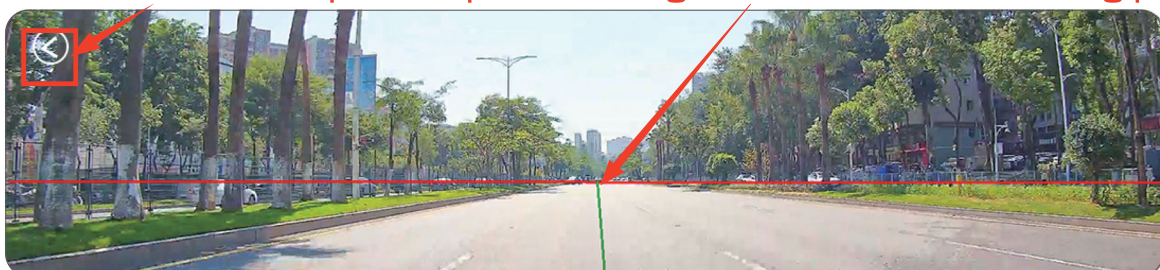


2. Adjust the camera angle so that the center point of the screen aligns with the road's vanishing point.



3. Once calibration is complete, click the top-left corner to return.

Click here to return upon completion **Align with the road's vanishing point**



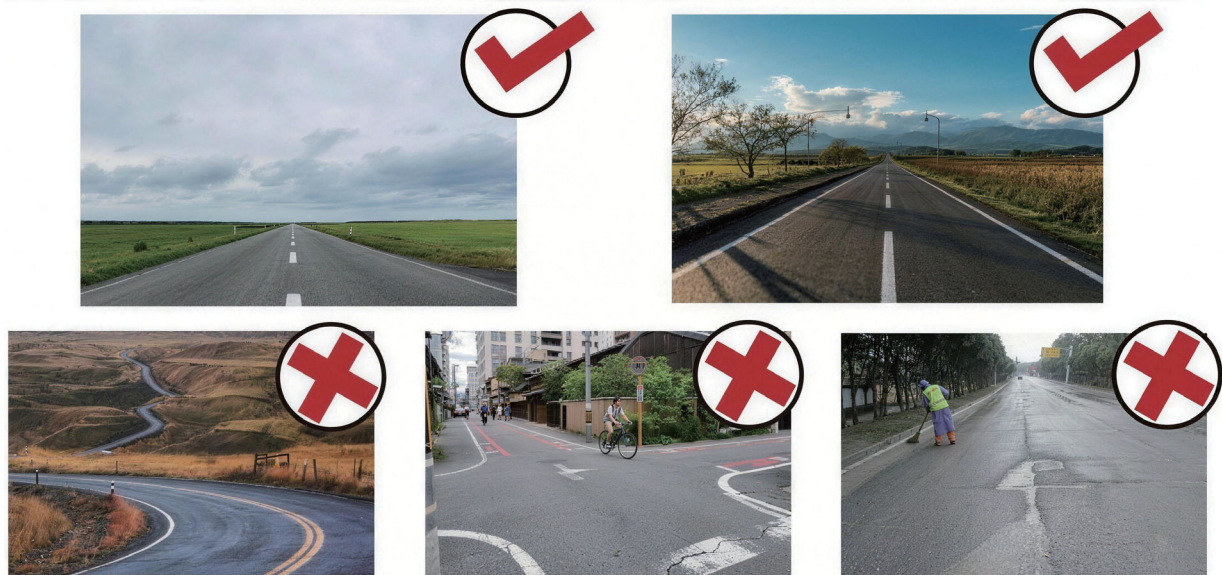
Note: Ensure the BSD system is activated before testing.

Main Unit Settings Menu Functions

BSD Calibration Procedure

Note:

- Calibration within the AI Assisted Driving settings is mandatory prior to using the BSD function.



- Please park your vehicle in the centre of any road with lanes.
(Safety note: Refrain from operating during periods of heavy traffic.)
- To calibrate the BSD function, we recommend performing calibration on a straight road.

Introduction to WiFi and App

The "AKEEYO" app is a free application that allows you to control the AKY-730Pro, 2.4G/5G wireless LAN-equipped dash camera, from your smartphone.

To install the app

① Read the QR code
Please install it.



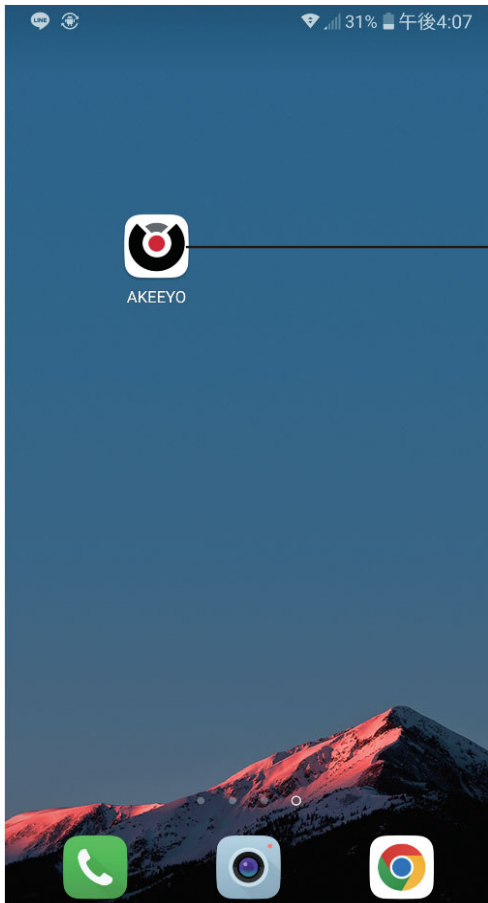
② App Store or Search
from Google Play.



AKEEYO

検索

Post-installation procedures

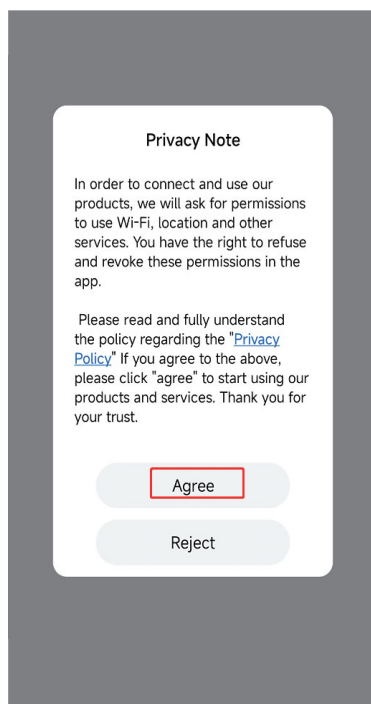


The app appears on the home screen
Make sure it is and click

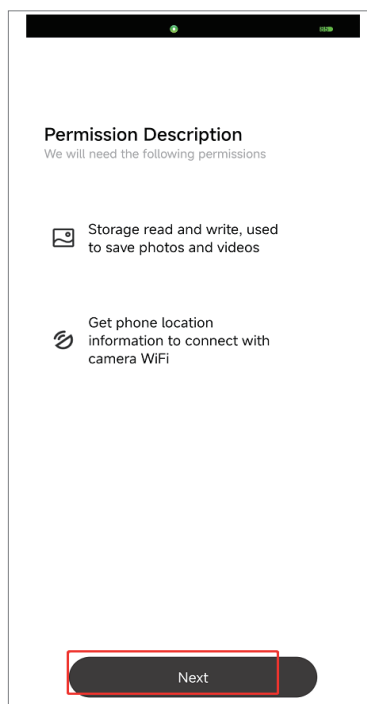
Introduction to WiFi and App

Registration steps

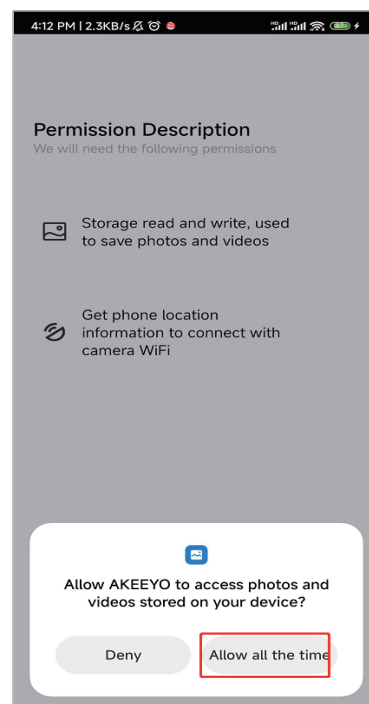
1



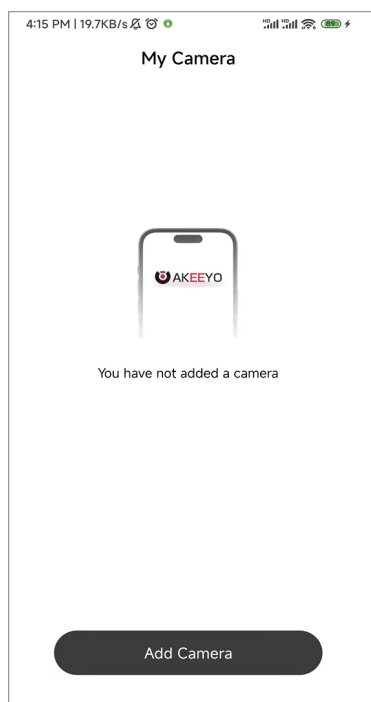
2



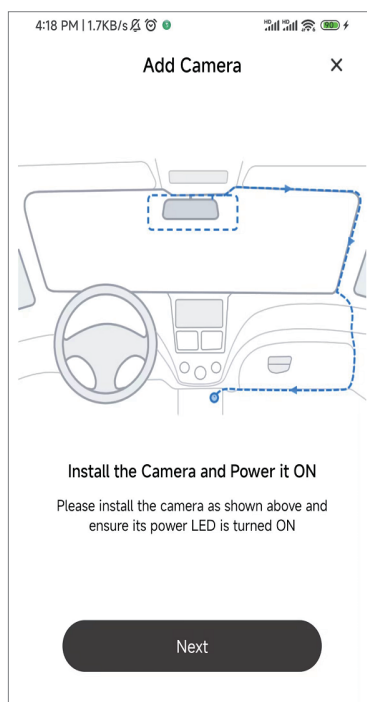
3



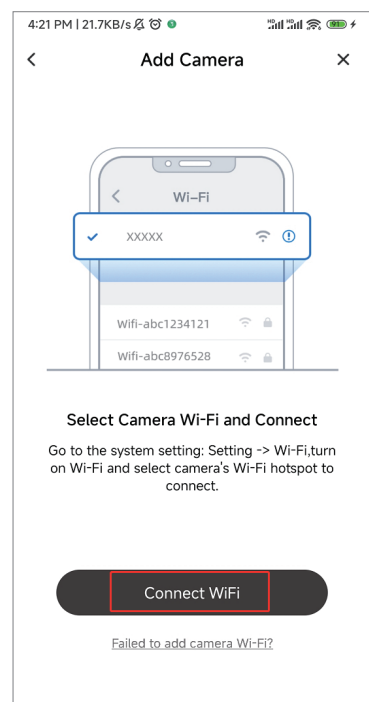
4



5



6



Introduction to WiFi and App

- ①The WiFi of the machine is turned on by default after it is turned on. When it is turned off, short press 2 times to turn on the WiFi function.
 - ②Open "AKEEYO" APP, click "Add Camera", Search the machine' s WiFi on your phone.
 - ③After the machine's WiFi is displayed, click the WiFi name and enter the password to connect. The default Wi-Fi name is "NV-X2-****" and the default password is "12345678".
- *The WIFI name will not be displayed unless the main unit is turned on.
 - *The last 4 digits of the WiFi name are random. The WiFi name of each device is different.
 - *Camera Wi-Fi name and password can be changed.

7



8



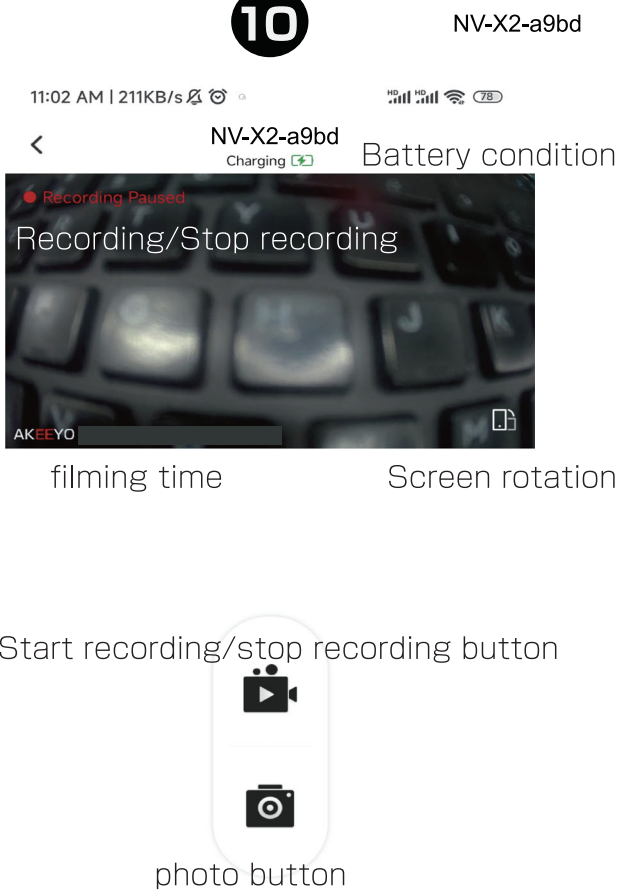
- ④After WiFi connection, move to the main page

Introduction to WiFi and App

9



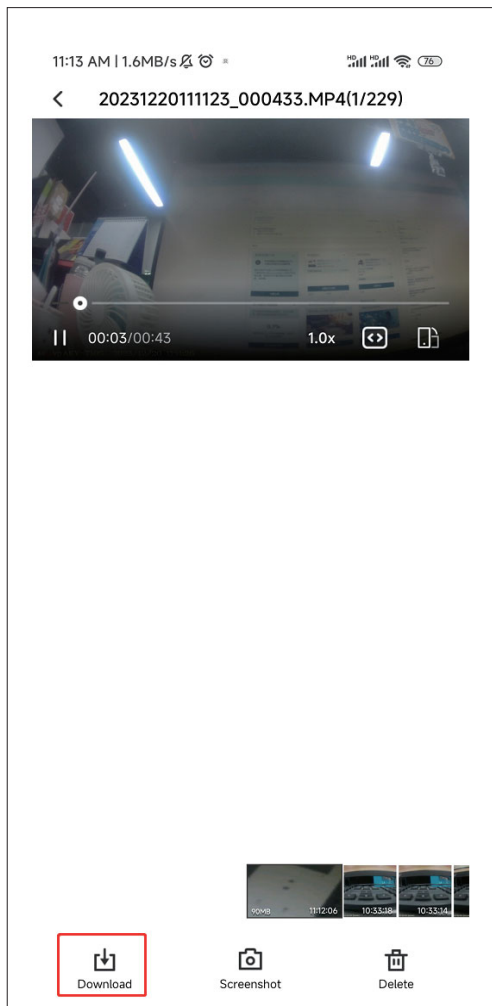
10



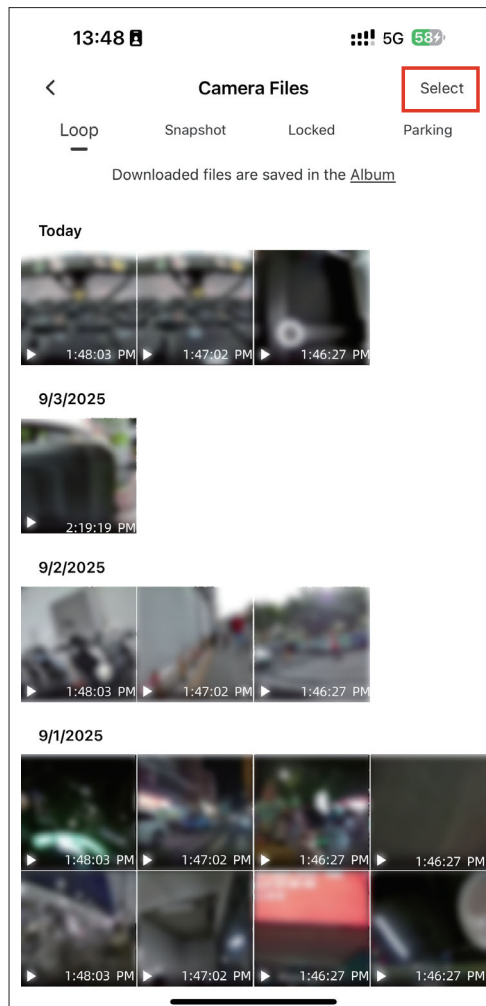
Introduction to WiFi and App

Play back and download videos

13



14



- ① Click on the video and confirm the video content on your phone
- ② Click the selection button in the upper right corner to select multiple videos and download multiple videos at the same time
- ③ The downloaded video will be marked as downloaded

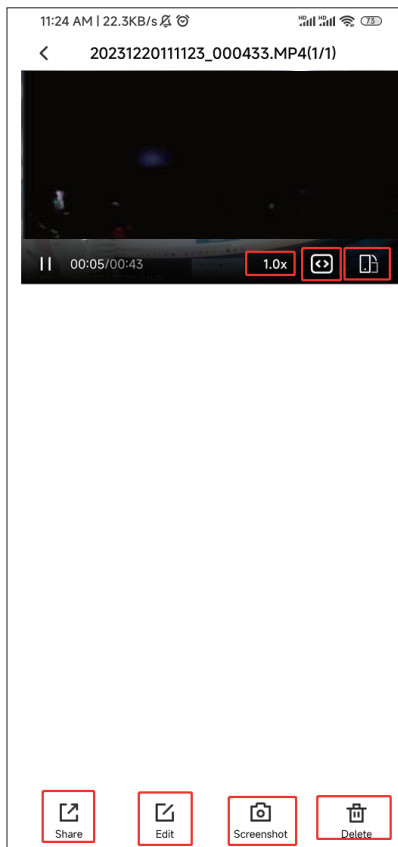
Introduction to WiFi and App

Edit the downloaded video on your mobile phone

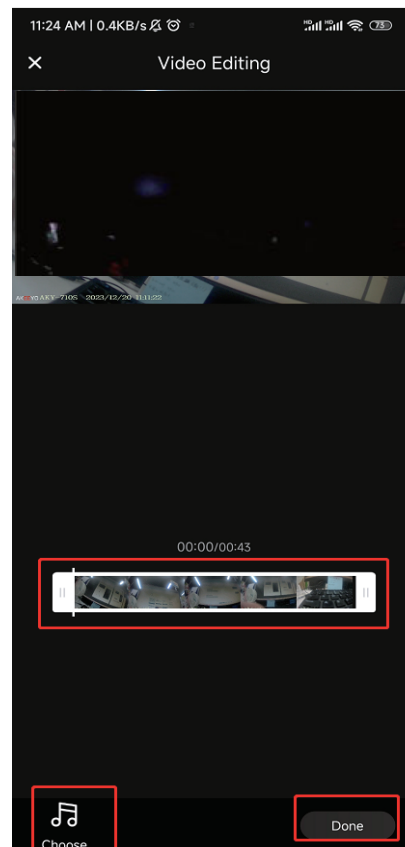
15



17



18



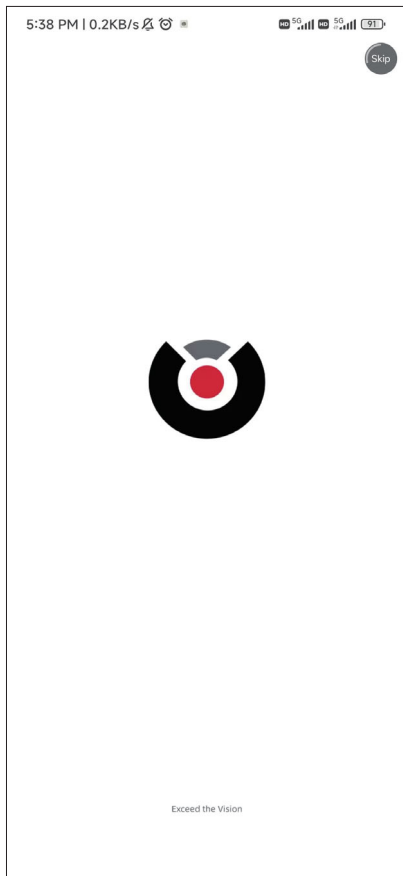
- ① You can adjust the playback speed of downloaded videos.
- ② Downloaded videos can be shared, edited, scripted, and deleted.
- ③ After editing the video, tap Done and check it in My Album.

Introduction to WiFi and App

where is my album?

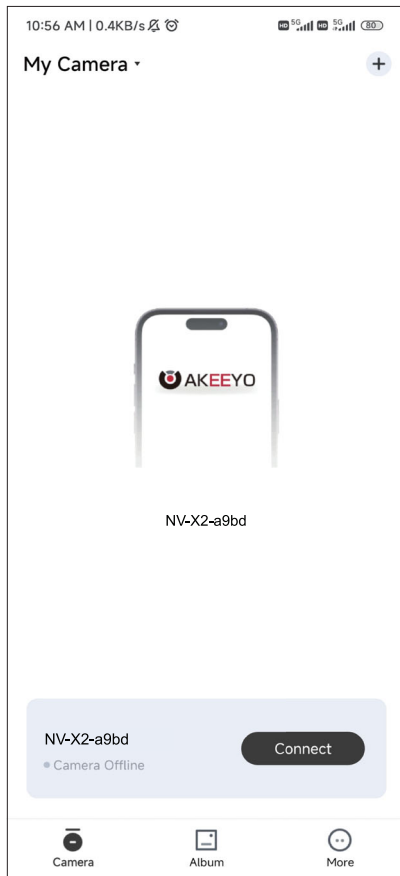
19

Open AKEEYO APP



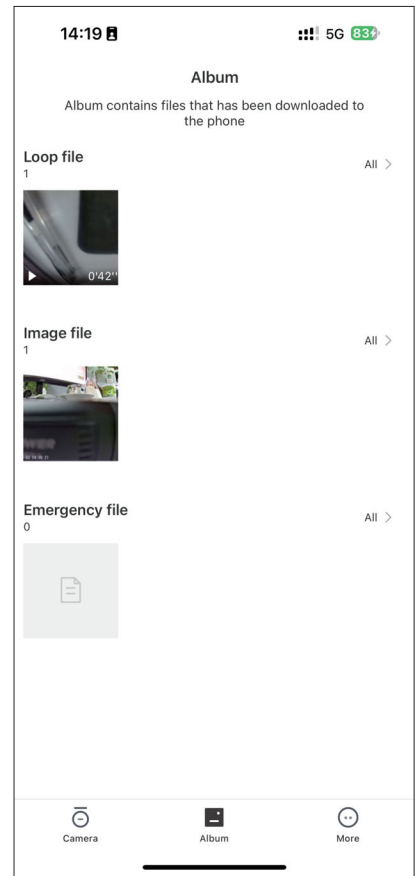
20

Click on album



21

Downloaded videos and edited videos will be stored here



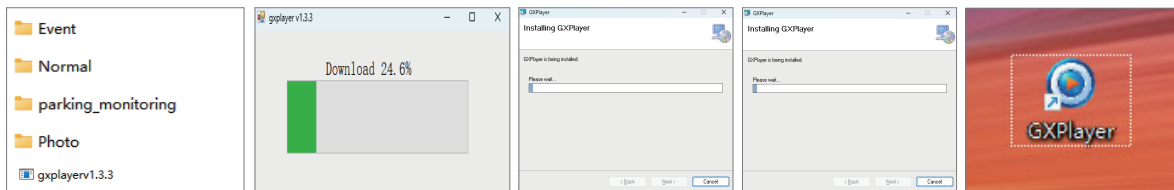
Settings Available Within the App

Item	Default value	Optional setting
Loop recording duration	1 minute	1 minute / 3 minutes / 5 minutes
Collision Sensitivity	Medium	High / Medium / Low / Off
Audio Recording Switch (synchronised with preview interface shortcut key settings)	On	On / Off
Exposure Compensation	0	-2 / -1 / 0 / 1 / 2
Vehicle Registration Number (Custom Watermark)	Maximum 9 characters	Uppercase letters + numbers
Restore Factory Settings	/	Confirmation required in prompt window during factory reset
Format Storage	/	Confirmation required in prompt window during formatting
Firmware version	/	
Wi-Fi name	NV-X2-****	User-customisable, supports 4-22 digit/letter combinations only
WiFi connection password	12345678	Users may modify this themselves; only 8-22 digit and letter combinations are supported

Playing Back Recorded Videos or Photos

Installing a dedicated player

- ① Turn off the power to the main unit and slowly remove the Memory card.
- ② Insert the Memory card into the card slot of your computer using a card reader (sold separately).
- ③ Click on the "gxplayer" folder on the Memory card and download the dedicated player.
- ④ Select the video file and play it on the video player on your computer.



Playback on Windows system

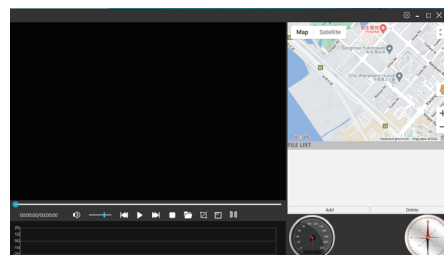
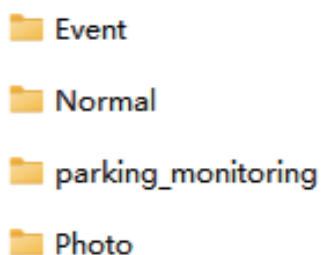
Compatible OS: Windows7, Windows8.1, Windows 10,

- ① Turn off the power to the main unit and slowly remove the Memory card.
- ② Insert the Memory card into the card slot of your computer using a card reader (sold separately).
- ③ There are four folders on the Memory card: "Event", "Normal", "parking_monitoring". and "Photo".
- ④ Select the video file and play it on the video player on your computer.

Playback on Mac system

Compatible OS: Mac OSX10.3.6 or later,

- ① Turn off the power to the main unit and slowly remove the Memory card.
- ② Insert the Memory card into the card slot of your computer using a card reader (sold separately).
- ③ There are four folders on the Memory card: "Event". "Normal", "parking_monitoring". and "Photo".
- ④ Select the video file and play it on the video player on your computer.

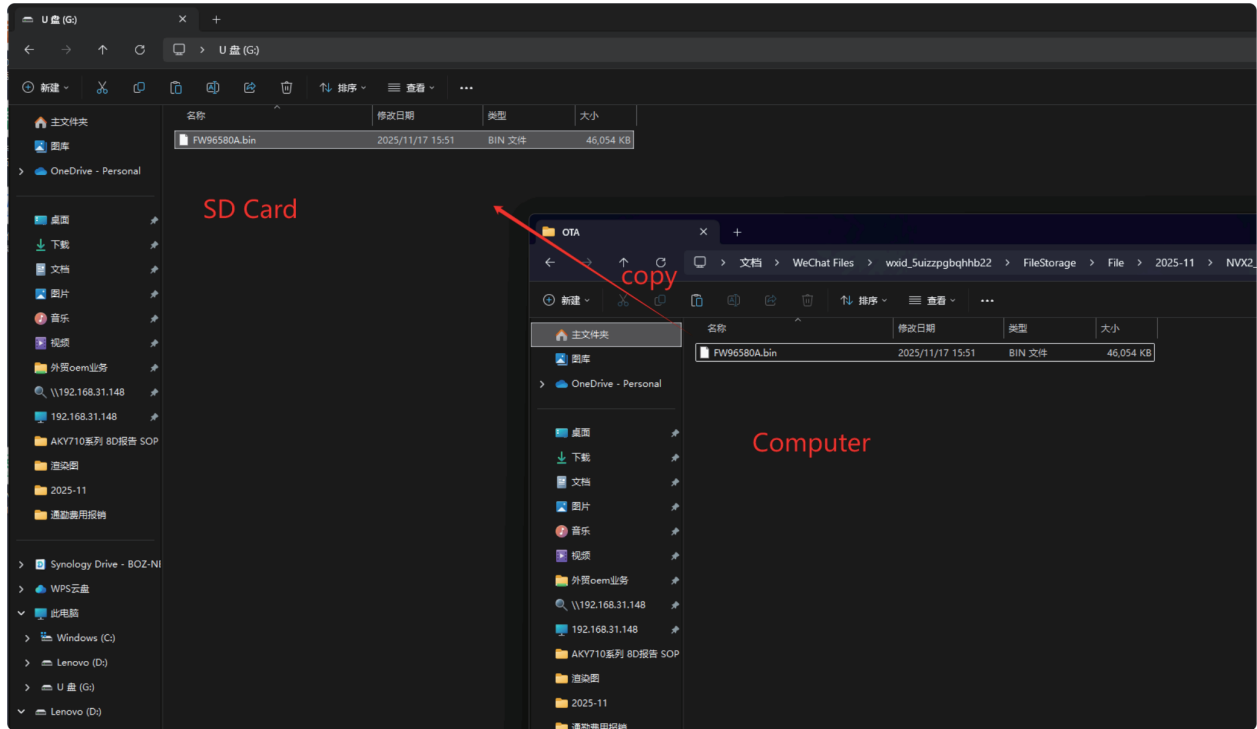


Player interface

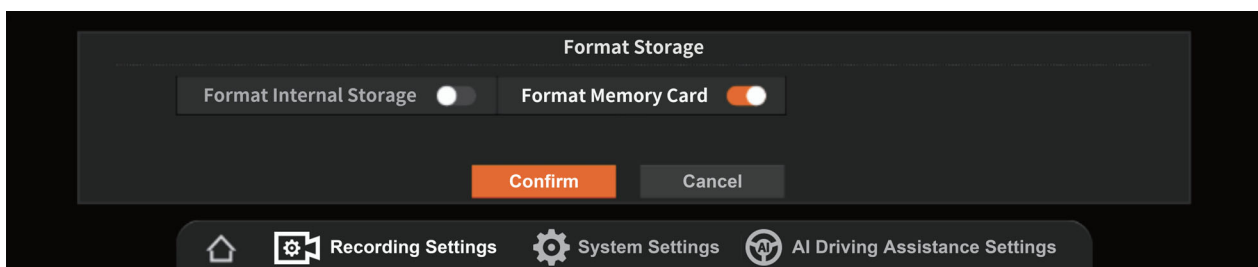
Software Version Upgrade

1.Memory Card Upgrade Procedure:

- 1.Insert the SD card into a card reader connected to your computer.
Copy the latest software upgrade package to the SD card
【files ending with the .bin suffix】



- 2.Insert the SD card containing the latest software package into the host unit. After connecting the front and rear cameras to the host and engaging the ACC, the blue indicator light will flash. The device will automatically upgrade with the screen off. (Illustrate the wiring and light status)
- 3.When the screen illuminates and displays the startup animation, the upgrade is complete.
- 4.After each upgrade, you must reconfigure basic settings such as system language, time zone, and date. (Add supplementary diagram)
- 5.Format the memory card within the settings menu before resuming normal operation.

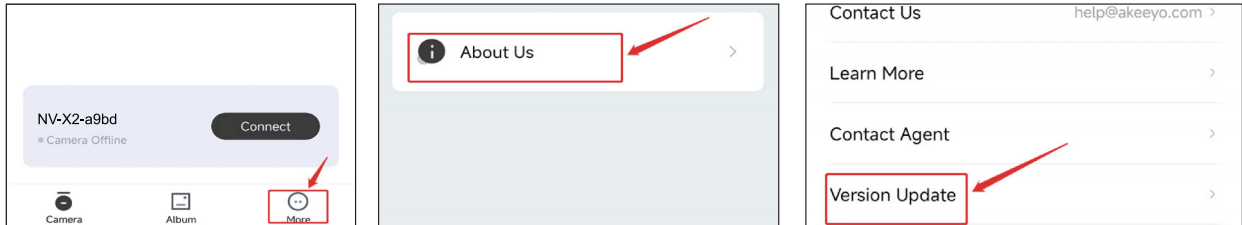


Software Version Upgrade

1. Check for new version manually:

You can manually check if there is a new firmware version by clicking More → About Us → Version Update in the app.

Note: Your phone needs to be connected to the internet during the process of detecting and downloading new versions.



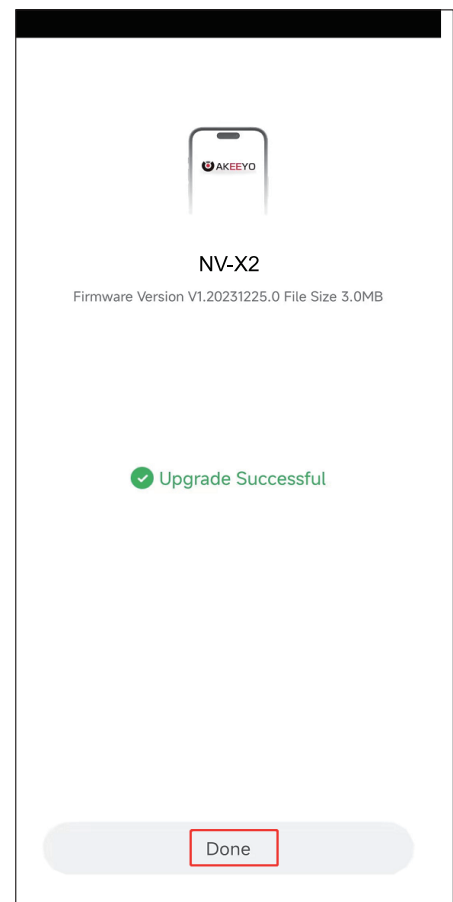
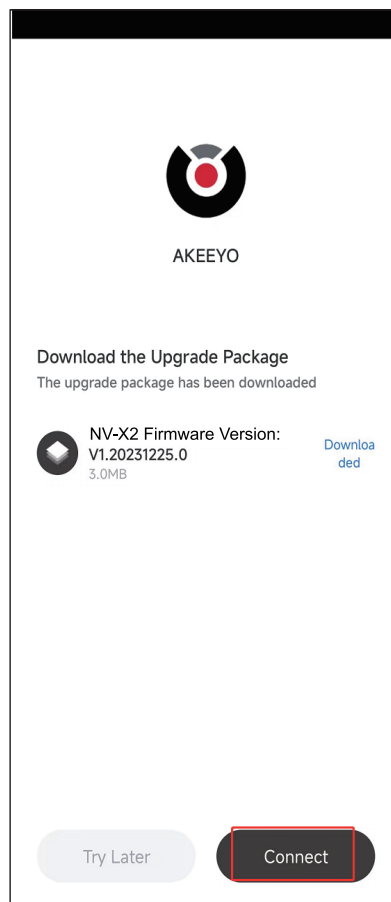
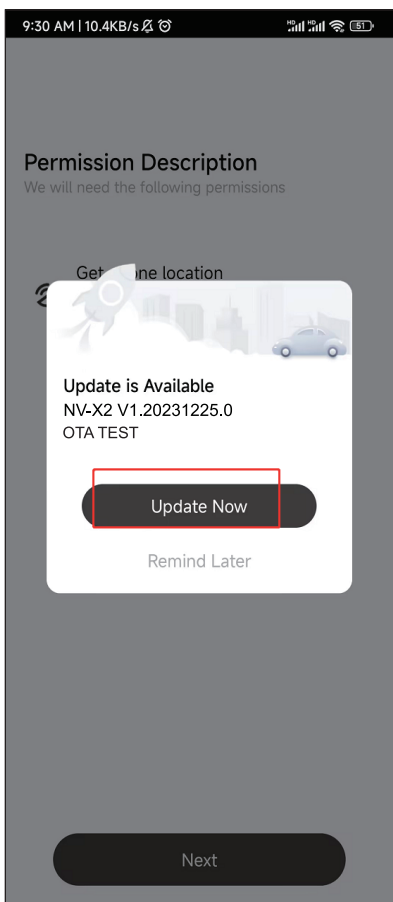
2. Automatically upgrade via app (OTA)

When using the AKEEYO app for the first time, connect your smartphone to the device's Wi-Fi and obtain the product's firmware version.

· Check for new version with internet connection:

If your smartphone is connected to the internet, open the app again. The app uses the already added firmware version to connect to the cloud and check for new firmware versions.

· Upgrade pop-up display: If there is a new firmware version, the app will display a pop-up window to notify you that there is a firmware update available.



Note:

- Please insert the memory card before performing an OTA upgrade.
- Maintain power supply throughout the upgrade process to prevent failure.

Reset and Factory Reset

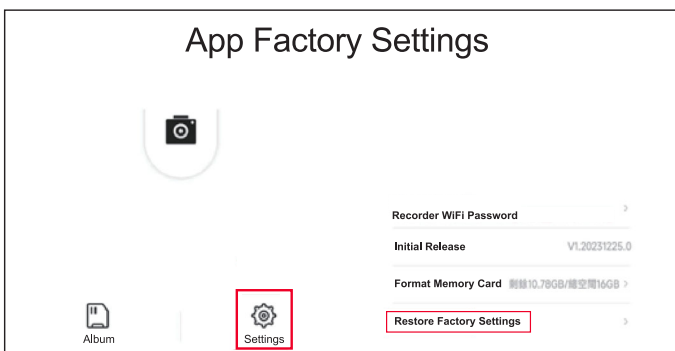
1.Reset

Should the device freeze or exhibit erroneous responses, force a shutdown by inserting a SIM card pin into the reset hole (R) on the rear of the unit. This method will not restore factory settings.

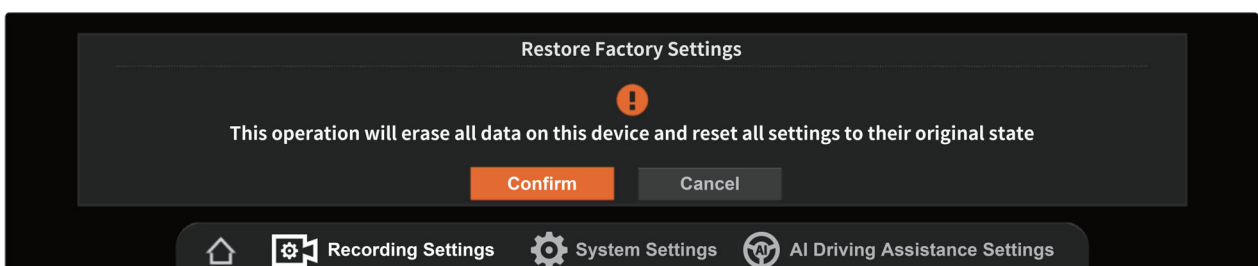


2.Restore Factory Settings

Restore factory settings via the mobile application. Within the mobile application's settings menu, select "Restore Factory Settings". Upon confirmation, all settings will revert to their default values.



Restore factory settings in the host settings menu. On the host's main page, tap the settings menu button, select System Settings, scroll down to highlight the "Restore Factory Settings" function, and confirm. All settings will revert to their initial values.



Specification

Model	AKY-NV-X2
Product Name	Dashcam with Super Night Vision System
Memory Card	32 to 256GB (SDHC or higher, U3)
Front Camera	Super Night Vision Sensor, 2K Resolution, 60fps, 4MP, F1.0
	Field of View: D66°, H58°, V:32°
Rear Camera	Super Night Vision Sensor, 2K Resolution, 60fps, 4MP, F1.7
	Field of View: D146°, H125°, V67.8°
Third Channel Camera	Supports AHD camera (sold separately), 1080p resolution, 30 frames per second
Video Duration	1 minute / 3 minutes / 5 minutes
Blind Spot Detection	Supported
Display	11.26-inch IPS touchscreen
Reverse Parking Assist	Supported
Gravity Sensor	Supported
Touchscreen	Supported
Parking Monitor	Supported (Step-down power cable sold separately)
GPS	Supported
Microphone	Built-in high-sensitivity microphone
Voice Control	Supported
Speaker	Supported
Recording Modes	Loop Recording / Impact Recording / Parking Monitoring Recording / Static Image Capture
File Format	Video: MP4 Image Format: JPG
Operating Temperature	-20°C to 65°C
Operating Voltage	DC 12V/24V

※ Specifications are subject to change without prior notice due to product improvements.

※ For purchasing accessories, please contact customer service.

Frequently Asked Questions

Problem	Cause	Solution
Unable to power on	Poor connection of cigarette lighter power adapter	Disconnect and reconnect the cigarette lighter power adapter.
	Use of a multi-socket cigarette lighter adapter	Using a multi-socket adapter causes voltage instability, preventing power-on.
	Cigarette lighter charger with insufficient rated power.	Use the cigarette lighter power cable specified in the accessories.
	Temperature too high or too low.	Operate within the temperature range of '-20°C to +65°C'.
	When using a step-down power cable, insufficient voltage from an aged battery may prevent normal power supply	Replace the vehicle battery or use a cigarette lighter power adapter for power supply.
The host unit is unresponsive during operation	System freeze	Please reset by pressing the reset button on the rear of the host unit using a SIM card pin.
Some files have not been recorded	When the memory card is full, the oldest files will be overwritten.	Please back up and clear the memory regularly.
Missing pixels on LCD	This is a characteristic of the LCD panel, not a fault	—

Frequently Asked Questions

Unable to record	Memory card not inserted	Ensure the memory card is inserted into the main unit
	Memory card read error	Format the memory card or replace it with another memory card
Unable to receive GPS signal	GPS signal is obstructed in complex environments such as tunnels or tall buildings	Please retry connecting to GPS in an open area
	The unit has just started up and has not successfully acquired a GPS signal	After powering on the unit, please wait patiently for approximately 5 minutes
	The vehicle environment prevents GPS signal reception.	Position the GPS module in an area of the windscreen free from metal obstructions and attempt to receive the GPS signal again
	Factory reset has just been performed / upgrade completed, GPS information has been cleared.	Wait patiently for approximately 5 minutes for re-positioning.
Auto Restart	Please connect or disconnect any cables whilst the device is powered on.	Do not insert or remove cables whilst the device is powered on

Frequently Asked Questions

Frequent Emergency Recording	Collision sensitivity setting is inappropriate	Please change the collision sensitivity setting to Low in the settings menu.
Collision occurred but no emergency recording triggered	Collision sensitivity disabled or set to low	In the settings menu, adjust collision sensitivity to Medium / High
Front/rear camera not displaying	Cable severely compressed or folded	Rearrange cable routing to prevent compression or folding
	Poor contact at the Type-C interface	Wipe the cable interface with alcohol and ensure secure connection
	Poor contact at the BMW interface	Disconnect the BMW interface and reconnect
Affects other in-vehicle devices (e.g., inability to play television)	Installation position within 50 centimetres of antennas, radar, or similar equipment	High-performance HD image quality tuners may interfere with television or radio reception, resulting in reduced sensitivity. Install at least 50 centimetres away from the ETC antenna. If sensor devices (safety driving assistance systems, various radars, etc.) are present, ensure they are properly installed to prevent interference.
Screen flickering	Unstable power supply voltage	Use the official cigarette lighter power adapter
		Do not use a power strip
	Step-down cable not properly connected / poor contact.	Check each cable connection and clean the power cord contacts

Warranty and Customer Service

Disclaimer

- When using this product whilst driving on public roads, users must strictly comply with local traffic regulations. Users shall bear all relevant legal liabilities during product usage; neither the manufacturer, importer nor seller of this product shall assume any legal responsibility.
- The warranty scope is limited to the main unit and accessories only. No liability is accepted for loss or damage to stored data.
- The company shall not be liable for vehicle damage, loss of time, or loss of profits resulting from accidents occurring during the use of this product.
- Videos and images captured using this product must not be used for purposes beyond personal enjoyment without the rights holder's permission. The company shall not be held responsible for actions such as photographing individuals without consent and posting such material on social media.
- This product does not guarantee video recording functionality under all circumstances. Recorded footage is not guaranteed to be admissible as valid evidence in accidents.
- To comply with safety standards under the Road Transport Vehicle Act, this product must be installed in a position that does not interfere with driving operations or obstruct the driver's field of vision.
- LED traffic lights may appear to be flashing in recordings, or colours may not be accurately distinguished. The company shall not be held liable for any issues related to the identification or recording of traffic signals.

The following situations are not covered by the warranty.

- Use of disassembled or modified batteries (battery modification may cause explosion or leakage);
- Malfunctions or damage caused by fire, earthquake, flood, lightning strike, other natural disasters, pollution, salt damage, gas damage (e.g. sulphuric gases), abnormal voltage, or other external factors.

Product Warranty

- This product carries a one-year warranty period from the date of purchase (accessories carry a 30-day warranty period). Failures resulting from improper use by the user are not covered under warranty.
- Users must carefully read the 'Safety Precautions' section in this manual.
- Users must inspect the product within 30 days of purchase. Should any defects be found within this period, please return the product via a cash-on-delivery courier service.
- Should the product arrive more than 30 days after delivery, it shall be deemed requiring repair. In such circumstances, the buyer shall bear the shipping costs. The company shall cover shipping costs after completing product replacement or repair.
- Free maintenance services exclude consumables and components with limited lifespans.
- During repairs, the user shall bear the shipping costs for the product.

AKEEYO authenticity certification and after-sales service

Please be sure to check it.

Please register on the website below.

<https://www.akeeyo.com/pages/safe>



Authentic product certification
QR Code

You can check whether it is genuine
AKEEYO on the official website or by
scanning the QR code on the left.

Official Website: <https://www.akeeyo.com>

Customer Support: help@akeeyo.com



Scan me

FCC Warning:

This equipment has been tested and found to comply with the limits for a Class B digital device, pursuant to part 15 of the FCC Rules. These limits are designed to provide reasonable protection against harmful interference in a residential installation. This equipment generates, uses and can radiate radio frequency energy and, if not installed and used in accordance with the instructions, may cause harmful interference to radio communications. However, there is no guarantee that interference will not occur in a particular installation. If this equipment does cause harmful interference to radio or television reception, which can be determined by turning the equipment off and on, the user is encouraged to try to correct the interference by one or more of the following measures:

- Reorient or relocate the receiving antenna.
- Increase the separation between the equipment and receiver.
- Connect the equipment into an outlet on a circuit different from that to which the receiver is connected.
- Consult the dealer or an experienced radio/TV technician for help.

Caution: Any changes or modifications to this device not explicitly approved by manufacturer could void your authority to operate this equipment.

This device complies with part 15 of the FCC Rules. Operation is subject to the following two conditions:

(1) This device may not cause harmful interference, and (2) this device must accept any interference received, including interference that may cause undesired operation.

This equipment complies with FCC radiation exposure limits set forth for an uncontrolled environment. This equipment should be installed and operated with minimum distance 20cm between the radiator and your body.